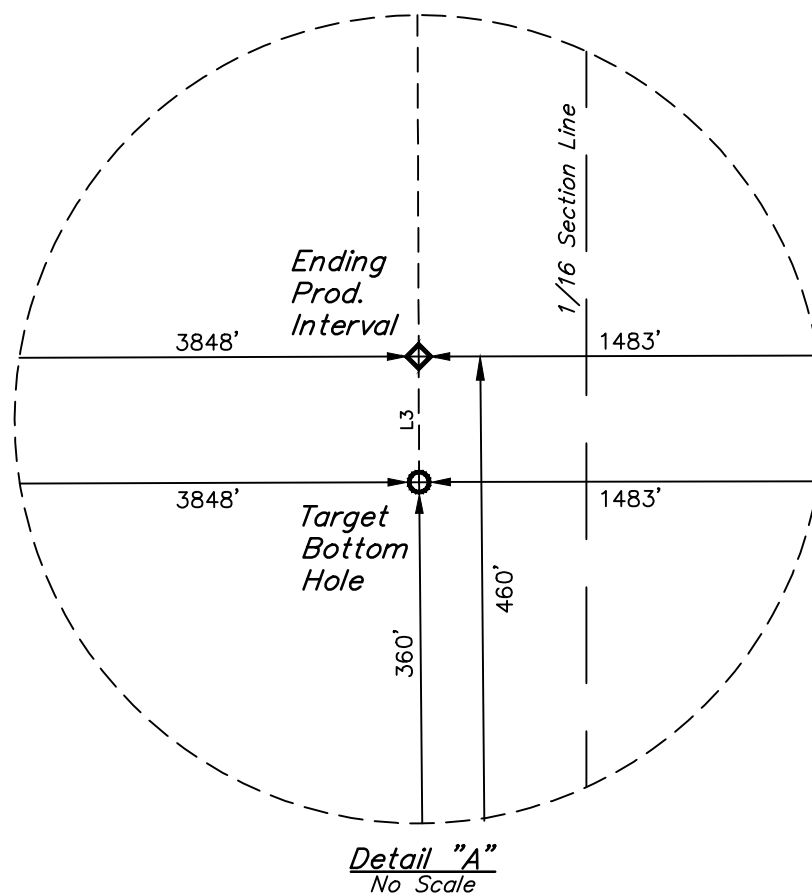
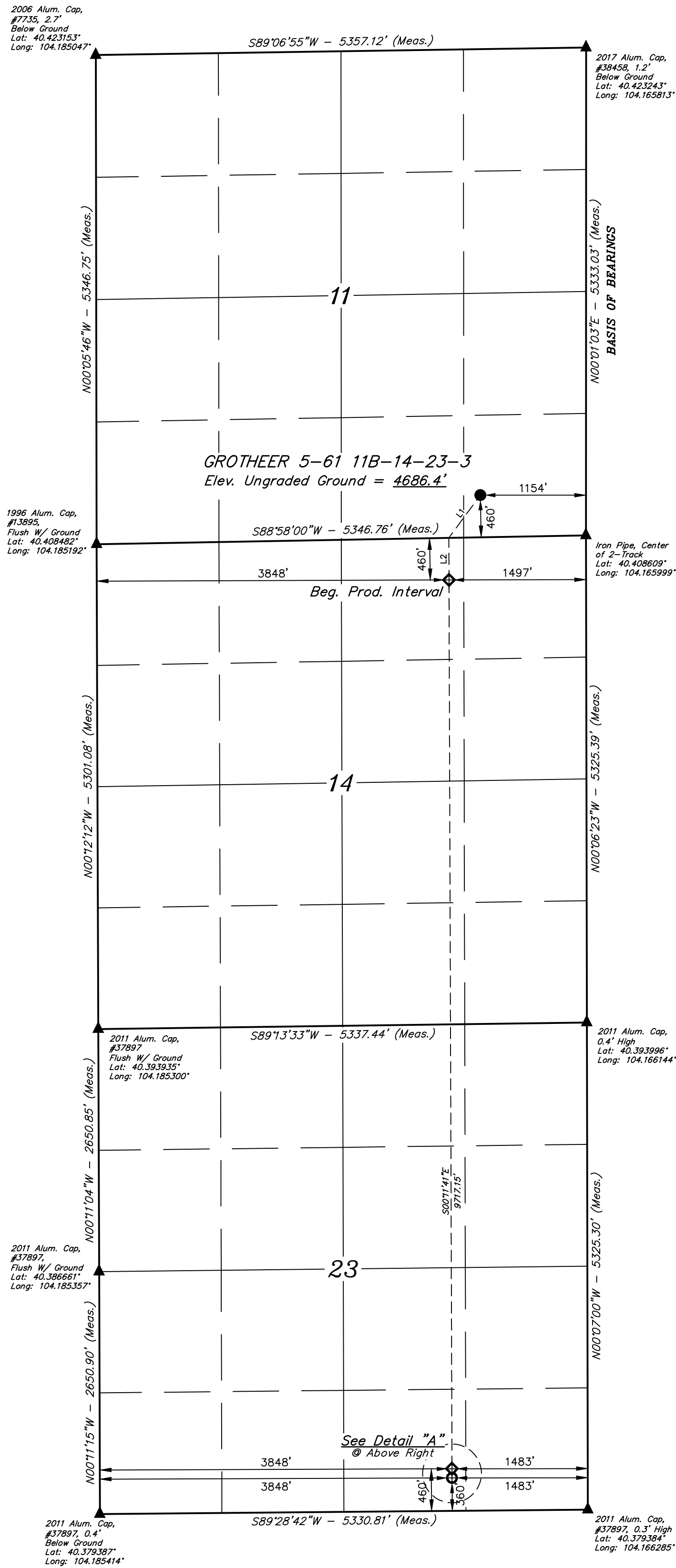


**NOTE:**  
Distances referenced  
on plat to section lines  
are perpendicular.

LINE TABLE		
LINE	DIRECTION	LENGTH
L1	S36°26'41"W	579.68'
L2	S00°11'41"E	460.05'
L3	S00°11'15"E	100.00'



SURFACE LOCATION 460° FSL 1154° FEL	BEG. POINT INTERVAL 460° FNL 3848° FWL 1497° FEL	ENDING POINT INTERVAL 460° FSL 3848° FWL 1483° FEL	TARGET BOTTOM HOLE 360° FSL 3848° FWL 1483° FEL
NAD 83 (SURFACE LOCATION) LATITUDE = 40°24'35.44" (40.409845°) LONGITUDE = 104°10'12.45" (104.170126°)	NAD 83 (BEG. POINT INTERVAL) LATITUDE = 40°24'26.32" (40.407312°) LONGITUDE = 104°10'16.99" (104.171387°)	NAD 83 (ENDING POINT INTERVAL) LATITUDE = 40°22'50.33" (40.380647°) LONGITUDE = 104°10'17.74" (104.171596°)	NAD 83 (TARGET BOTTOM HOLE) LATITUDE = 40°22'49.34" (40.380375°) LONGITUDE = 104°10'17.75" (104.171598°)
NAD 27 (SURFACE LOCATION) LATITUDE = 40°24'35.50" (40.409862°) LONGITUDE = 104°10'16.63" (104.169620°)	NAD 27 (BEG. POINT INTERVAL) LATITUDE = 40°24'26.38" (40.407329°) LONGITUDE = 104°10'15.17" (104.170881°)	NAD 27 (ENDING POINT INTERVAL) LATITUDE = 40°22'50.39" (40.380665°) LONGITUDE = 104°10'15.92" (104.171090°)	NAD 27 (TARGET BOTTOM HOLE) LATITUDE = 40°22'49.40" (40.380390°) LONGITUDE = 104°10'15.93" (104.171092°)
STATE PLANE 1483° NAD 83 (CO. NORTH) N: 134923.69° E: 3370316.11°	STATE PLANE 73° NAD 83 (CO. NORTH) N: 1393995.73° E: 3369978.63°	STATE PLANE 1483° NAD 83 (CO. NORTH) N: 1384282.19° E: 3370066.14°	STATE PLANE 1483° NAD 83 (CO. NORTH) N: 1384182.22° E: 3370067.03°
STATE PLANE 1483° NAD 27 (CO. NORTH) N: 394024.98° E: 2370466.71°	STATE PLANE 73° NAD 27 (CO. NORTH) N: 393997.06° E: 2370129.22°	STATE PLANE 1483° NAD 27 (CO. NORTH) N: 384283.85° E: 2370216.78°	STATE PLANE 1483° NAD 27 (CO. NORTH) N: 384183.89° E: 2370217.67°

**CERTIFICATE**

THIS IS TO CERTIFY THAT THE ABOVE PAGE(S) PREPARED, RECALCULATED  
NOTES OF ACTUAL SURVEYS MADE TO ME BY UNDER MY SUPERVISION  
AND THAT THE SAME ARE TRUE AND CORRECT TO THE BEST OF MY  
KNOWLEDGE AND BELIEF.

*[Signature]*  
\_\_\_\_\_  
Surveyor

Seal: **BOARD OF SURVEYING**  
**STATE OF TEXAS**  
**REGISTERED**  
**PROFESSIONAL SURVEYOR**  
**NO. 12345**

REGISTERED LAND SURVEYOR  
REGISTRATION NO. 28285  
STATE OF COLORADO  
03-20-22

REV: 2 03-21-22 P.M. (SURFACE LOCATION MOVE

## BISON OIL & GAS II

**GROTHER 5-61 11B-14-23-3  
SE 1/4 SE 1/4, SECTION 11, T5N, R61W, 6th P.M.  
WELD COUNTY, COLORADO**

<b>SURVEYED BY</b>	RYAN WILLIAMS, O.R.	02-18-19	<b>SCALE</b>
<b>DRAWN BY</b>	K.B.	02-19-19	1" = 1000'

## WELL LOCATION PLAT

**BASIS OF ELEVATION**  
OPUS SOLUTION GENERATED NAVD 88

**UELS, LLC**  
Corporate Office \* 85 South 200 East  
Vernal, UT 84078 \* (435) 789-1017

