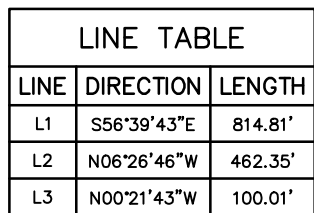


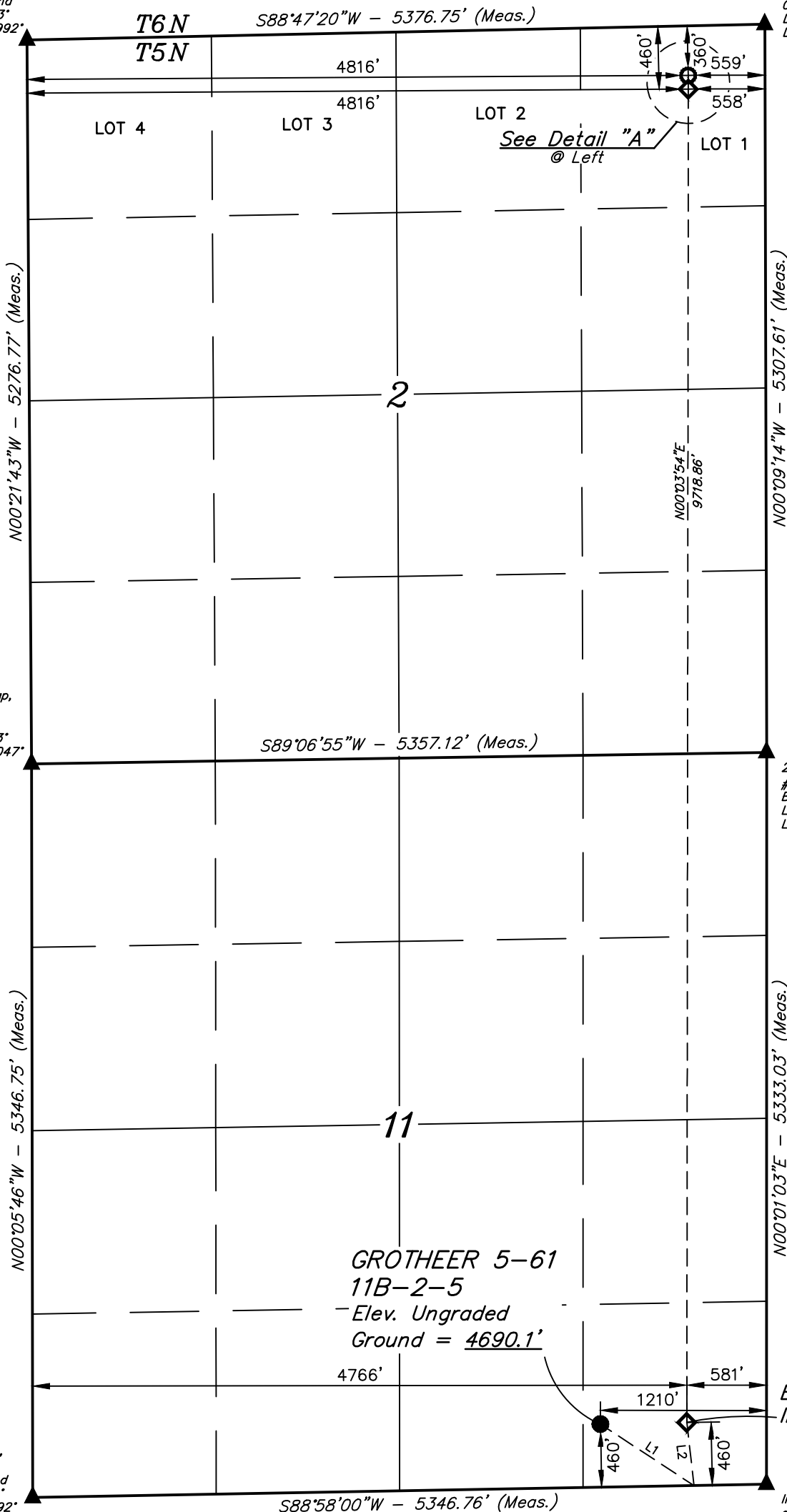
T5N, R61W, 6th P.M.

- 2006 Alum. Cap,
#7735,
Flush W/ Ground
Lat: 40.437633°
Long: 104.184992°

2012 Alum. Cap,
#38307,
0.8' Below Ground
Lat: 40.437807°
Long: 104.165684



LINE TABLE		
LINE	DIRECTION	LENGTH
L1	S56°39'43"E	814.81'
L2	N06°26'46"W	462.35'
L3	N00°21'43"W	100.01'



PDOP = 1.3

SURFACE LOCATION
460' FSL 1210' FEL
NAD 83 (SURFACE LOCATION)
LATITUDE = 40°24'35.44" (40.409843°)
LONGITUDE = 104°10'13.18" (104.170327°)
NAD 27 (SURFACE LOCATION)
LATITUDE = 40°24'35.50" (40.409860°)
LONGITUDE = 104°10'11.35" (104.169821°)
STATE PLANE NAD 83 (CO. NORTH)
N: 1394922.34' E: 3370260.15'
STATE PLANE NAD 27 (CO. NORTH)
N: 394923.64' E: 2370410.74'

BEG. PROD. INTERVAL 460' FSL 4766' FWL 581' FEL	ENDING PROD. INTERVAL 460' FNL 4816' FWL 558' FEL	TARGET BOTTOM HOLE 360' FNL 4816' FWL 559' FEL
NAD 83 (BEG. PROD. INTERVAL)	NAD 83 (ENDING PROD. INTERVAL)	NAD 83 (TARGET BOTTOM HOLE)
LATITUDE = 40°24'35.49" (40.409859°)	LATITUDE = 40°26'11.50" (40.436527°)	LATITUDE = 40°26'12.49" (40.436801°)
LONGITUDE = 104°10'05.05" (104.168069°)	LONGITUDE = 104°10'03.72" (104.167701°)	LONGITUDE = 104°10'03.72" (104.167700°)
NAD 27 (BEG. PROD. INTERVAL)	NAD 27 (ENDING PROD. INTERVAL)	NAD 27 (TARGET BOTTOM HOLE)
LATITUDE = 40°24'35.55" (40.409876°)	LATITUDE = 40°26'11.56" (40.436543°)	LATITUDE = 40°26'12.54" (40.436818°)
LONGITUDE = 104°10'03.23" (104.167563°)	LONGITUDE = 104°10'01.90" (104.167195°)	LONGITUDE = 104°10'01.90" (104.167194°)
STATE PLANE NAD 83 (CO. NORTH)	STATE PLANE NAD 83 (CO. NORTH)	STATE PLANE NAD 83 (CO. NORTH)
N: 1394937.50' E: 3370888.68'	N: 1404653.06' E: 3370845.27'	N: 1404753.03' E: 3370844.08'
STATE PLANE NAD 27 (CO. NORTH)	STATE PLANE NAD 27 (CO. NORTH)	STATE PLANE NAD 27 (CO. NORTH)
N: 394938.79' E: 2371039.30'	N: 404654.02' E: 2370995.83'	N: 404753.98' E: 2370994.64'

CERTIFICATE

THIS IS TO CERTIFY THAT THE ABOVE WAS PREPARED FROM THE
NOTES OF ACTUAL SURVEYS MADE BY ME OR UNDER MY SUPERVISION,
AND THAT THE SAME ARE TRUE AND ACCURATE TO THE BEST OF MY
KNOWLEDGE AND BELIEF.

REGISTERED LAND SURVEYOR
REGISTRATION NO. 28285
STATE OF COLORADO

REV: 2 03-21-22 P.M. (SURFACE LOCATION MOVE)

BISON OIL & GAS II

GROTHER 5-61 11B-2-5
SE 1/4 SE 1/4, SECTION 11, T5N, R61W, 6th P.M.
WELD COUNTY, COLORADO

SURVEYED BY	RYAN WILLIAMS, O.R.	02-18-19	SCALE
DRAWN BY	K.B.	02-19-19	1" = 1000'

WELL LOCATION PLAT

BASIS OF ELEVATION
OPUS SOLUTION GENERATED NAVD 88



UELS, LLC
Corporate Office * 85 South 200 East
Vernal, UT 84078 * (435) 789-1017

