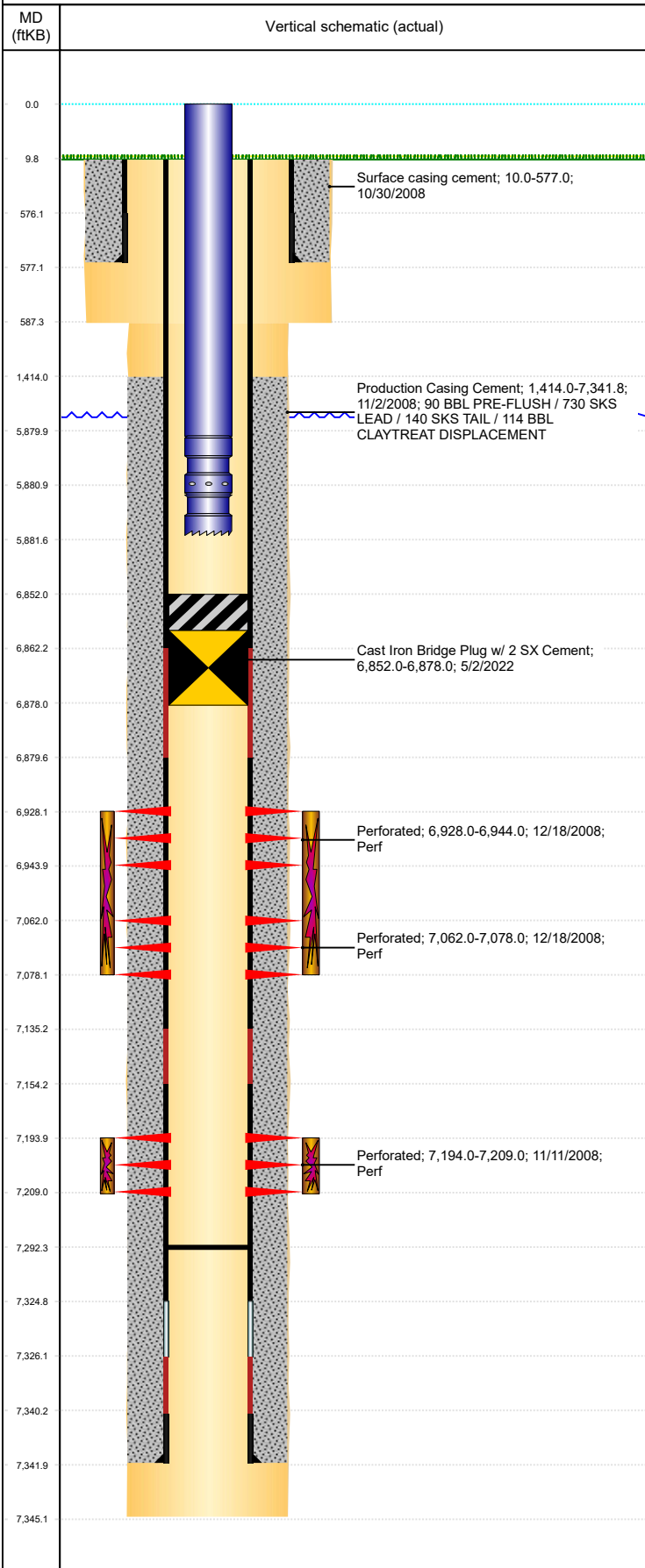


Well Name: MCMILLEN G19-21

VERTICAL, ORIGINAL HOLE, 5/12/2022 1:44:55 PM



Well Header									
API 05-123-28011			Business Unit DJ BASIN			District 15		Well Config VERTICAL	
KB - GL / MSL (ft... 10.00		Spud Date 10/29/2008		P & A Date		Well Production Status TA			SoRT Yes
Comment									
Surface Location (Congressional)									
Qtr 3 SE	Qtr 4 NW	Section 19	Twnshp 4	Twnsh... N	Range 65	Rng E... W	Actual Latitude (°) 40.29814381	Actual Longitude (°) -104.70638970	
Wellbore Sections									
Section Des			Size (in)			Act Top, MD (ftKB)		Act Btm, MD (ftKB)	
SURFACE			12 1/4			10		587	
PRODUCTION			7 7/8			587		7,345	
Casing Strings									
Csg Des			Run Date		OD (in)	Wt/Len (lb/ft)	Grade	Top, MD (ftKB)	MD (ftKB)
Surface			10/30/2008		8 5/8	24.00	J-55	10.0	577.0
Production			11/2/2008		4 1/2	11.60	M-80	10.0	7,341.8
Cement									
Des					Start Date		Top (ftKB)		Btm (ftKB)
Surface casing cement					10/30/2008		10.0		577.0
Production Casing Cement					11/2/2008		1,414.0		7,341.8
Zone Statuses									
Zone Name	Status Date	Status	Fluid Type	Job				Prod Method	
CODELL	12/26/2008	PR		DRILLING - ORIGINAL, 10/28/2008 22:30					
CODELL	5/2/2022	TA							
NIOBRARA	12/26/2008	PR		DRILLING - ORIGINAL, 10/28/2008 22:30					
NIOBRARA	5/2/2022	TA							
Perforation Data									
Linked Zone			Bnch/Stg	Entered Shot Total	Top (ftKB)		Btm (ftKB)		Date
NIOBRARA, ORIGINAL HOLE			A	32	6,928.00		6,944.00		12/18/2008
NIOBRARA, ORIGINAL HOLE			C	32	7,062.00		7,078.00		12/18/2008
CODELL, ORIGINAL HOLE				60	7,194.00		7,209.00		11/11/2008
Stimulation Intervals									
Zone				Start Date		Top (ftKB)		Btm (ftKB)	
NIOBRARA, ORIGINAL HOLE				12/18/2008		6,928.0		7,078.0	
CODELL, ORIGINAL HOLE				12/18/2008		7,194.0		7,209.0	
Other In Hole									
Run Date		Des			Make	OD (in)	Top (ftKB)	Btm (ftKB)	
5/2/2022		Cast Iron Bridge Plug w/ 2 SX Cement				3.99	6,852.0	6,878.0	
Logs									
Date		Type				Top, MD (ftKB)		Btm, MD (ftKB)	
11/2/2008		Caliper/Comp. Density/Neutron/GR/SP/ML				2,500.0		7,351.0	
11/2/2008		DIL/GR/SP/Caliper				577.0		7,351.0	
11/11/2008		CBL/CCL/GR				1,190.0		7,286.0	
Plug Back Total Depths									
Date		Type		Com				Depth (ftKB)	
11/2/2008		FLOAT COLLAR						7,324.0	
2/25/2009		PLUG REMNANTS						7,292.3	