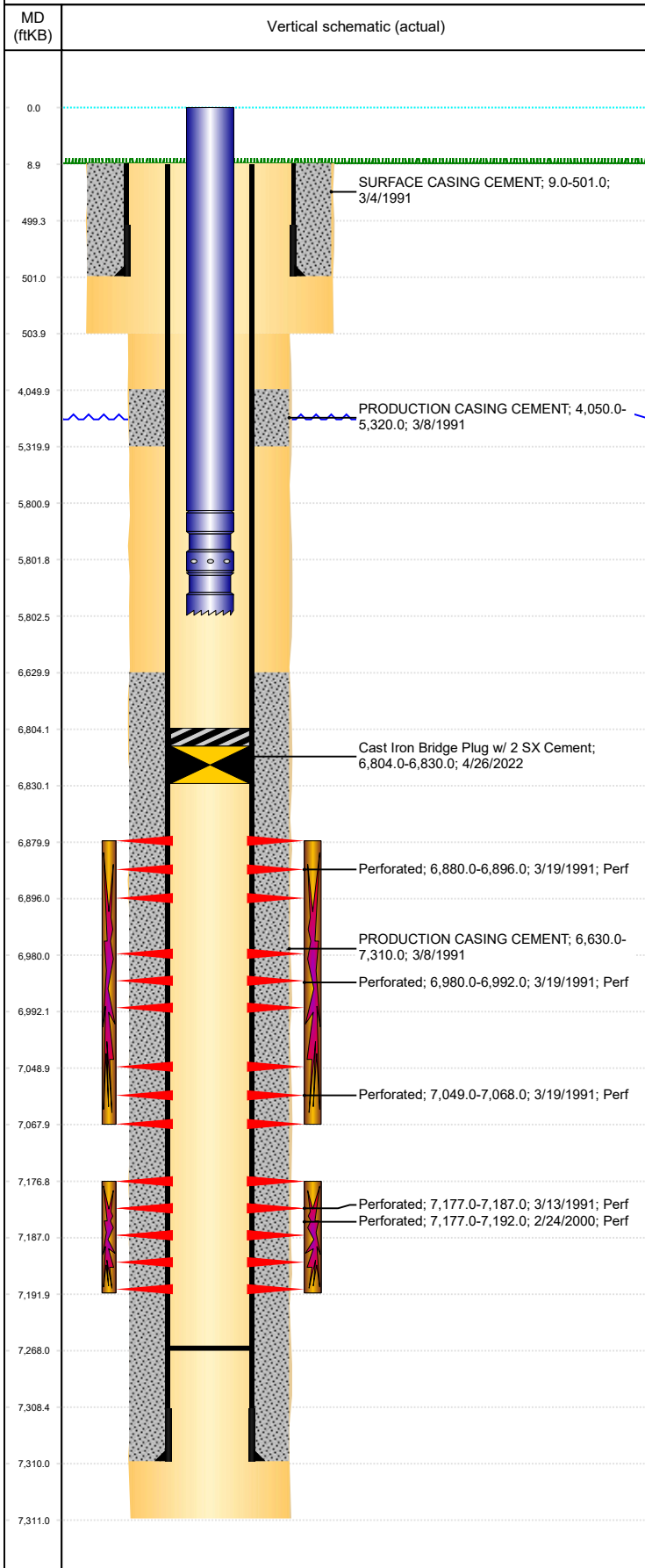


Well Name: MCMILLEN TRUST 19-04G

VERTICAL, ORIGINAL HOLE, 5/11/2022 12:18:53 PM



Well Header									
API 05-123-14906		Business Unit DJ BASIN			District 15		Well Config VERTICAL		
KB - GL / MSL (ft... 9.00		Spud Date 3/4/1991		P & A Date		Well Production Status TA			SoRT Yes
Comment									
Surface Location (Congressional)									
Qtr 3 NW	Qtr 4 NW	Section 19	Twnshp 4	Twnsh... N	Range 65	Rng E/... W	Actual Latitude (°) 40.30350705	Actual Longitude (°) -104.71369633	
Wellbore Sections									
Section Des			Size (in)			Act Top, MD (ftKB)		Act Btm, MD (ftKB)	
SURFACE			12 1/4			9		504	
PRODUCTION			7 7/8			504		7,311	
Casing Strings									
Csg Des			Run Date		OD (in)	Wt/Len (lb/ft)	Grade	Top, MD (ftKB)	MD (ftKB)
Surface			3/4/1991		8 5/8	23.00		9.0	501.0
Production			3/8/1991		4 1/2	11.60	M-75	9.0	7,310.0
Cement									
Des					Start Date		Top (ftKB)		Btm (ftKB)
SURFACE CASING CEMENT					3/4/1991		9.0		501.0
PRODUCTION CASING CEMENT					3/8/1991		4,050.0		5,320.0
PRODUCTION CASING CEMENT					3/8/1991		6,630.0		7,310.0
Zone Statuses									
Zone Name		Status Date	Status	Fluid Type	Job			Prod Method	
CODELL		3/14/2005	PR	Gas	TRI-FRAC, 2/23/2005 00:00				
CODELL		4/26/2022	TA	Gas					
NIOBRARA		3/26/1991	PR	Gas	DRILLING/COMPLETION - ORIGINAL, 3/4/1991...				
NIOBRARA		4/26/2022	TA	Gas					
Perforation Data									
Linked Zone			Bnch/Stg	Entered Shot Total	Top (ftKB)		Btm (ftKB)		Date
NIOBRARA, ORIGINAL HOLE			A	10	6,880.00		6,896.00		3/19/1991
NIOBRARA, ORIGINAL HOLE			B	10	6,980.00		6,992.00		3/19/1991
NIOBRARA, ORIGINAL HOLE			C	8	7,049.00		7,068.00		3/19/1991
CODELL, ORIGINAL HOLE				40	7,177.00		7,187.00		3/13/1991
CODELL, ORIGINAL HOLE				60	7,177.00		7,192.00		2/24/2000
Stimulation Intervals									
Zone				Start Date		Top (ftKB)		Btm (ftKB)	
NIOBRARA, ORIGINAL HOLE				3/21/1991		6,880.0		7,068.0	
CODELL, ORIGINAL HOLE				3/14/1991		7,177.0		7,192.0	
CODELL, ORIGINAL HOLE				3/24/2000		7,177.0		7,192.0	
CODELL, ORIGINAL HOLE				3/4/2005		7,177.0		7,192.0	
Other In Hole									
Run Date		Des			Make		OD (in)	Top (ftKB)	Btm (ftKB)
4/26/2022		Cast Iron Bridge Plug w/ 2 SX Cement					3.99	6,804.0	6,830.0
Logs									
Date		Type					Top, MD (ftKB)		Btm, MD (ftKB)
3/8/1991		COMPENSATED DENSITY					3,600.0		7,300.0
3/8/1991		INDUCTION					450.0		7,306.0
3/12/1991		CEMENT BOND					3,900.0		7,252.0
Plug Back Total Depths									
Date		Type			Com				Depth (ftKB)
3/8/1991		GUIDE SHOE							7,268.0