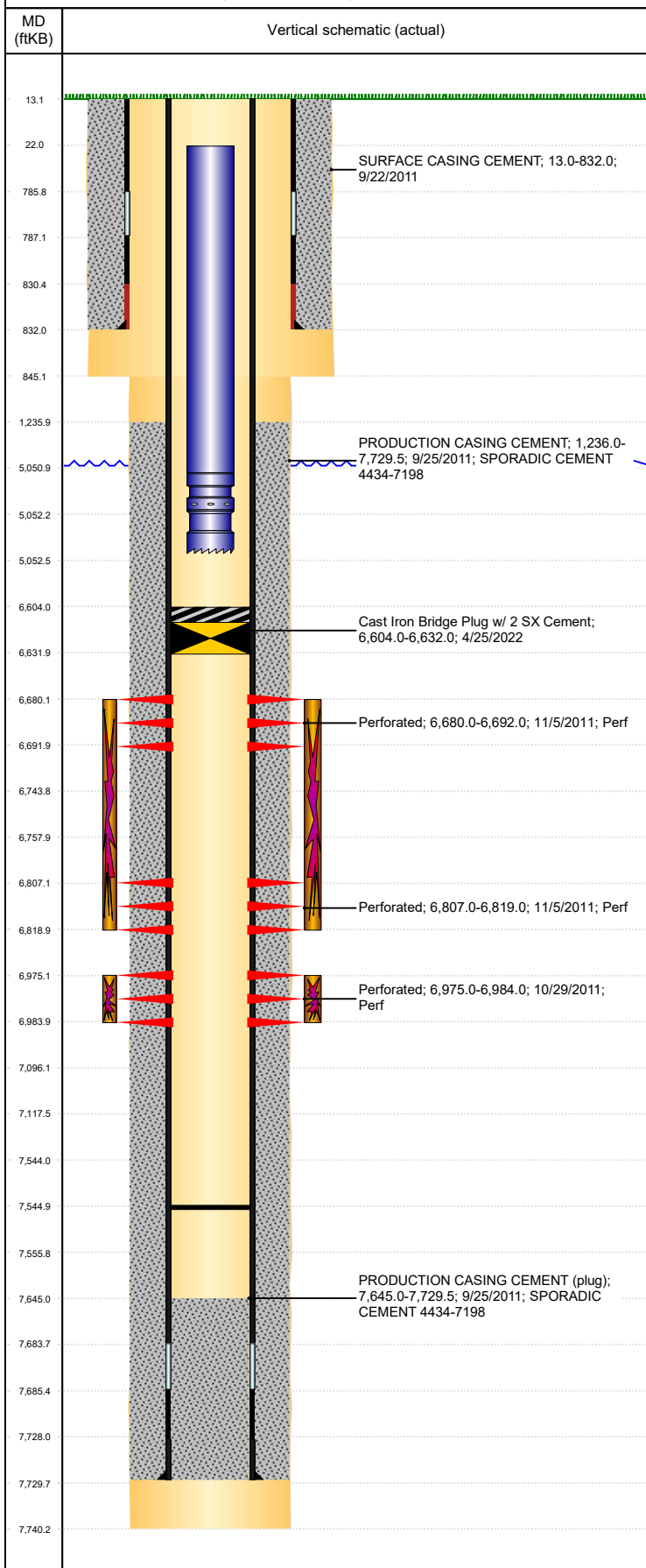


**Well Name: WALCKER AB12-08**

VERTICAL, ORIGINAL HOLE, 5/11/2022 9:17:25 AM



Well Header									
API 05-123-34272		Business Unit DJ BASIN		District 15		Well Config VERTICAL			
KB - GL / MSL (ft... 13.00		Spud Date 9/20/2011		P & A Date		Well Production Status TA			SoRT Yes
Comment									
Surface Location (Congressional)									
Qtr 3 SE	Qtr 4 NE	Section 12	Twnshp 7	Twnsh... N	Range 64	Rng E/... W	Actual Latitude (°) 40.58991623		Actual Longitude (°) -104.48977079
Wellbore Sections									
Section Des			Size (in)			Act Top, MD (ftKB)		Act Btm, MD (ftKB)	
SURFACE			12 1/4			13		845	
PRODUCTION			7 7/8			845		7,740	
Casing Strings									
Csg Des			Run Date		OD (in)	Wt/Len (lb/ft)	Grade	Top, MD (ftKB)	MD (ftKB)
Surface			9/21/2011		8 5/8	24.00	J-55	13.0	832.0
PRODUCTION			9/24/2011		4 1/2	11.60	M-80	13.0	7,729.5
Cement									
Des					Start Date		Top (ftKB)		Btm (ftKB)
SURFACE CASING CEMENT					9/22/2011		13.0		832.0
PRODUCTION CASING CEMENT					9/25/2011		1,236.0		7,729.5
Zone Statuses									
Zone Name		Status Date	Status	Fluid Type	Job			Prod Method	
NIOBRARA		11/22/2011	TA		DRILLING/COMPLETION - ORIGINAL, 9/20/2011...				
CODELL		11/22/2011	TA		DRILLING/COMPLETION - ORIGINAL, 9/20/2011...				
Perforation Data									
Linked Zone			Bnch/Stg	Entered Shot Total	Top (ftKB)		Btm (ftKB)		Date
NIOBRARA, ORIGINAL HOLE			A	24	6,680.00		6,692.00		11/5/2011
NIOBRARA, ORIGINAL HOLE			B	24	6,807.00		6,819.00		11/5/2011
CODELL, ORIGINAL HOLE				36	6,975.00		6,984.00		10/29/2011
Stimulation Intervals									
Zone					Start Date		Top (ftKB)		Btm (ftKB)
NIOBRARA, ORIGINAL HOLE					11/5/2011		6,680.0		6,819.0
CODELL, ORIGINAL HOLE					11/4/2011		6,975.0		6,984.0
Other In Hole									
Run Date		Des			Make		OD (in)	Top (ftKB)	Btm (ftKB)
4/25/2022		Cast Iron Bridge Plug w/ 2 SX Cement					3.99	6,604.0	6,632.0
Logs									
Date		Type					Top, MD (ftKB)		Btm, MD (ftKB)
9/26/2011		SPECTRAL DENSITY/Pe/DSN NEUTRON/SP/ARRAY COMPENSATED TRUE RESISTIVITY					3,498.0		7,710.0
9/26/2011		SPECTRAL GAMMA RAY					6,448.0		7,669.0
10/21/2011		CBL/CCL/GR					572.0		7,645.0
5/7/2013		GYRO					13.0		6,600.0
Plug Back Total Depths									
Date		Type			Com				Depth (ftKB)
10/21/2011		FILL			DEPTH LOGGER				7,645.0
11/17/2011		PLUG REMNANTS			C/O KILL PLUG AND CFTP DOWN TO 7545' KB				7,545.0