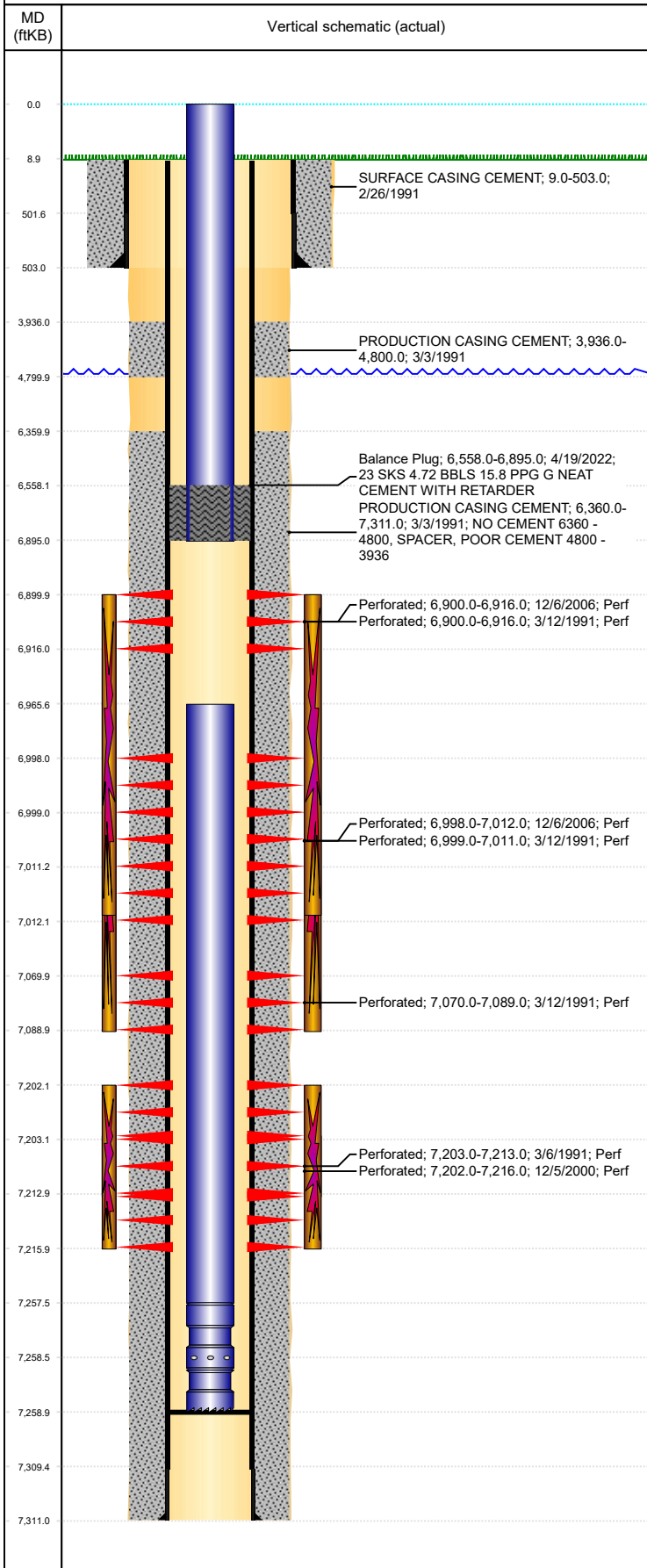


Well Name: MCMILLEN TRUST 19-05G

VERTICAL, ORIGINAL HOLE, 5/5/2022 12:34:50 PM



Well Header									
API 05-123-14907		Business Unit DJ BASIN			District 15		Well Config VERTICAL		
KB - GL / MSL (ft... 9.00		Spud Date 2/26/1991		P & A Date		Well Production Status TA			SoRT Yes
Comment POOR CEMENT 4800 - 3936. CODELL REFRAC- WELL WAS SCREENING OUT, LEFT ABOUT 2,700 LBS SAND IN BLENDER AND WENT TO FLUSH.									
Surface Location (Congressional)									
Qtr 3 SW	Qtr 4 NW	Section 19	Twnshp 4	Twnsh... N	Range 65	Rng E... W	Actual Latitude (°) 40.30027556	Actual Longitude (°) -104.71314209	
Wellbore Sections									
Section Des			Size (in)			Act Top, MD (ftKB)		Act Btm, MD (ftKB)	
SURFACE			12 1/4			9		503	
PRODUCTION			7 7/8			503		7,311	
Casing Strings									
Csg Des		Run Date		OD (in)	Wt/Len (lb/ft)	Grade	Top, MD (ftKB)	MD (ftKB)	
Surface		2/26/1991		8 5/8	23.00	M-50	9.0	503.0	
Production		3/3/1991		4 1/2	11.60	M-75	9.0	7,311.0	
Cement									
Des				Start Date		Top (ftKB)		Btm (ftKB)	
SURFACE CASING CEMENT				2/26/1991		9.0		503.0	
PRODUCTION CASING CEMENT				3/3/1991		3,936.0		4,800.0	
PRODUCTION CASING CEMENT				3/3/1991		6,360.0		7,311.0	
Balance Plug				4/19/2022		6,558.0		6,895.0	
Zone Statuses									
Zone Name	Status Date	Status	Fluid Type	Job				Prod Method	
NIOBRARA	5/10/2007	PR		RE-FRAC, 11/28/2006 00:00					
NIOBRARA	4/19/2022	TA		SET CEMENT PLUG, 4/11/2022 00:00					
CODELL	5/10/2007	PR		RE-FRAC, 11/28/2006 00:00					
CODELL	4/19/2022	TA		SET CEMENT PLUG, 4/11/2022 00:00					
Perforation Data									
Linked Zone		Bnch/Stg	Entered Shot Total	Top (ftKB)		Btm (ftKB)		Date	
NIOBRARA, ORIGINAL HOLE		A	96	6,900.00		6,916.00		12/6/2006	
NIOBRARA, ORIGINAL HOLE		B	10	6,900.00		6,916.00		3/12/1991	
NIOBRARA, ORIGINAL HOLE			84	6,998.00		7,012.00		12/6/2006	
NIOBRARA, ORIGINAL HOLE			10	6,999.00		7,011.00		3/12/1991	
NIOBRARA, ORIGINAL HOLE			8	7,070.00		7,089.00		3/12/1991	
CODELL, ORIGINAL HOLE			56	7,202.00		7,216.00		12/5/2000	
CODELL, ORIGINAL HOLE			40	7,203.00		7,213.00		3/6/1991	
Stimulation Intervals									
Zone			Start Date		Top (ftKB)		Btm (ftKB)		
NIOBRARA, ORIGINAL HOLE			3/13/1991		6,900.0		7,089.0		
NIOBRARA, ORIGINAL HOLE			1/31/2007		6,900.0		7,012.0		
CODELL, ORIGINAL HOLE			12/6/2000		7,202.0		7,216.0		
CODELL, ORIGINAL HOLE			3/7/1991		7,203.0		7,213.0		
Other In Hole									
Run Date		Des			Make		OD (in)	Top (ftKB)	Btm (ftKB)
Logs									
Date		Type				Top, MD (ftKB)		Btm, MD (ftKB)	
3/3/1991		COMPENSATED DENSITY				3,600.0		7,296.0	
3/3/1991		INDUCTION				503.0		7,311.0	
3/6/1991		CEMENT BOND				4,800.0		7,246.0	
10/17/2012		GYRO				9.0		7,170.0	
Plug Back Total Depths									
Date		Type		Com				Depth (ftKB)	
3/6/1991		FILL		DEPTH LOGGER ON CBL				7,257.0	
5/8/2007		FILL		CLEAN OUT TO LAND TUBING				7,259.0	