



MULTI-ARM
CALIPER
LOG

Comp. CRESTONE PEAK RESOURCES
Well WARNER 02B-10H-E165
Field WATTENBERG
Co. WELD
State COLORADO

Company CRESTONE PEAK RESOURCES
Well WARNER 02B-10H-E165
Field WATTENBERG
County WELD State COLORADO

Location: API # : 05-123-50735 Other Services
SEC 10 TWP 1N RGE 65W
SW/NW
NONE
Permanent Datum GL Elevation 4971'
Log Measured From KB 25' Above Perm. Datum
Drilling Measured From KELLY BUSHING
K.B. 4996'
D.F. 4996
G.L. 4971'

Date of Service	APRIL 2ND, 2022		
Run Number	ONE		
Depth Driller or P8TD	14439'		
Depth Logger	1510'		
Bottom Log Interval	1505'		
Top Log Interval	890'		
Open Hole Size	NA		
Type Fluid	WATER		
Fluid Level	NA		
Fluid Density	8.3#		
Max. Recorded Temperature	92 DEG F		
Max. Wellhead Pressure	ZERO		
Wellhead Connection	7-1/16 5K FLANGE		
Estimated Cement Top	NOT RECORDED		
Unit Number	132		
Wireline Size	9/32		
Location	FORT MORGAN, CO		
Recorded By	GREG JACKSON		
Witnessed By	CASEY WILKINS		
	Size	Wt/Ft	Top
Tubing Record			Bottom
Surface Casing	9-5/8	36	SURFACE 2558'
Production Casing	5-1/2	17	SURFACE 14,432'
Liner Record			

<<< Fold Here >>>

All interpretations are opinions based on inferences from electrical or other measurements and Pioneer Wireline Services, LLC cannot and does not guarantee the accuracy or correctness of any interpretation, and Pioneer Wireline Services, LLC will not be liable or responsible for any loss, costs, damages, or expenses incurred or sustained by anyone resulting from any interpretation made by any of our officers, agents or employees.

Comments

N/A DENOTES NOT AVAILABLE OR NON-APPLICABLE.
WELL LOGGED WITH ZERO PSI AT SURFACE
CASING ANOMALY FOUND AT 1002'

THANK YOU FOR USING PIONEER ENERGY SERVICES!

Your Pioneer Energy Services Crew	Tool Data - Services	Serial Number
Engineer: GREG JACKSON Operator: JOE PARRISH Operator: JOSE FIGUEROA Operator:	MF CALIPER	09007

Log Variables

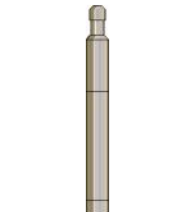
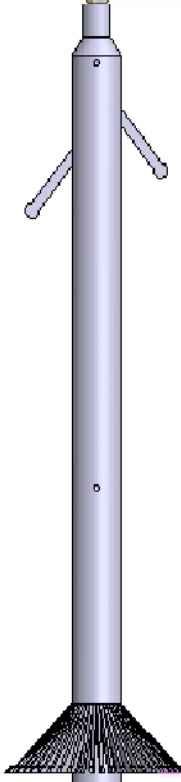
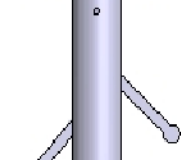
DatabaseC:\ProgramData\Warrior\Data\civitas_warner 02b-10h-e165_2022-04-02_mfcaliper.d
Dataset field/well/run1/pass1.3/_vars_

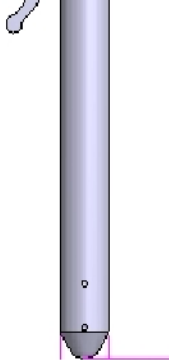
Top - Bottom


BOREID in 7.875	BOTTEMP degF 100	CASEID in 4.892	CASEOD in 5.5	CASETHCK in 0.304	IMGCCLCTH 0.15	IMGRWCSRC Ecc-Cor
MinAPIWall in 0	PERFS No	SRFTEMP degF 0	TDEPTH ft 0			

Variable Description

BOREID : Borehole I.D.
BOTTEMP : Bottom Hole Temperature
CASEID : Casing I.D.
CASEOD : Casing O.D.
CASETHCK : Casing Thickness
IMGCCLCTH : IMG Computed CCL threshold: fraction over nominal
IMGRWCSRC : IMG Remaining Wall computation source
MinAPIWall : Minimum API Wall Thickness
PERFS : Perforation Flag
SRFTEMP : Surface Temperature
TDEPTH : Total Depth

Sensor	Offset (ft)	Schematic	Description	Length (ft)	O.D. (in)	Weight (lb)
			Cable Head-Titan_144 1 7/16" Titan Cable Head	1.03	1.44	2.00
			GoWell-MFCAL-40 (09007) GoWell 40 Arm Caliper	6.33	2.78	81.57
Meas	2.17					

Aux1	0.00					
Dataset: civitas_warner 02b-10h-e165_2022-04-02_mfcaliper.db: field/well/run1/pass1.3 Total length: 7.36 ft Total weight: 83.57 lb O.D.: 2.78 in						

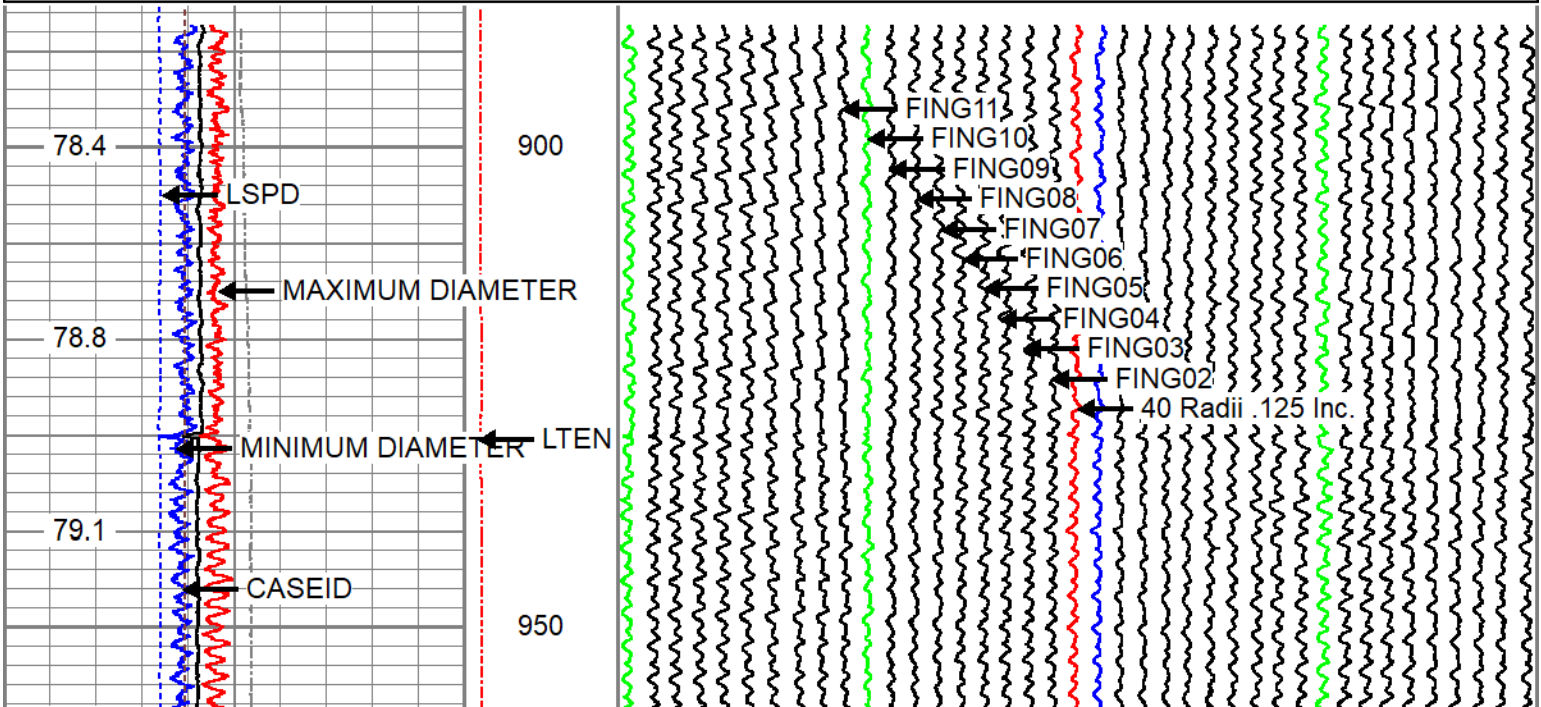


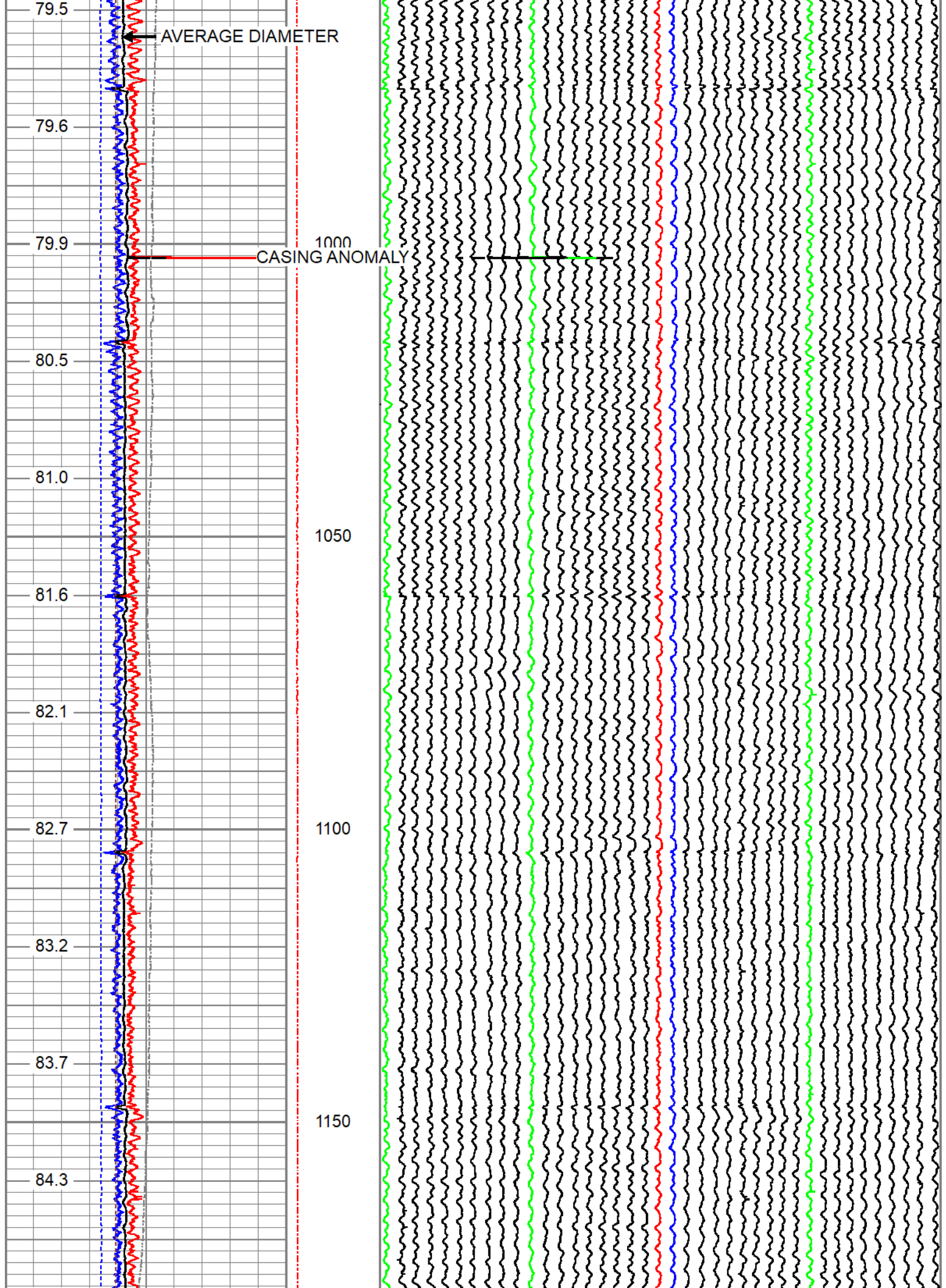
MAIN LOG

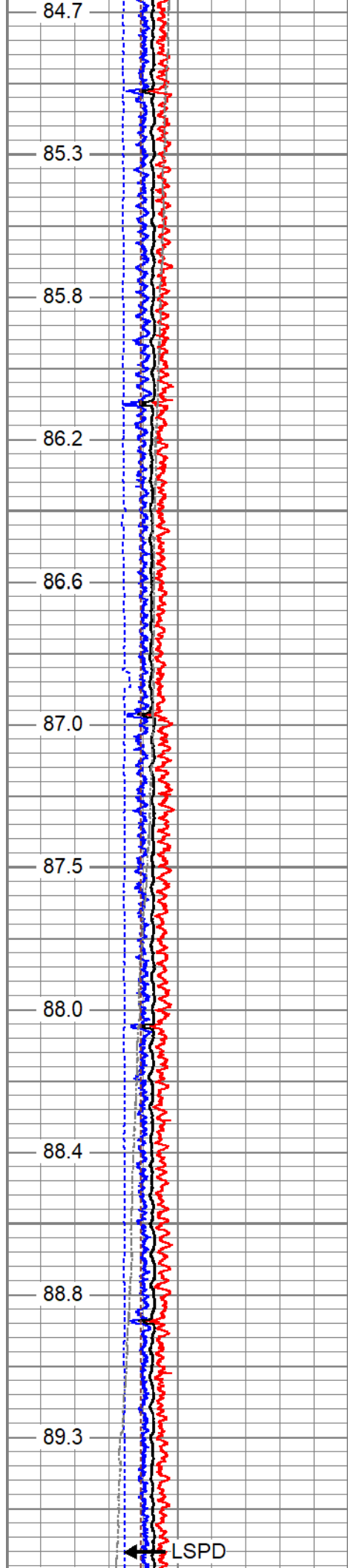
ZERO PSI APPLIED AT SURFACE

Database Filecivitas_warner 02b-10h-e165_2022-04-02_mfcaliper.db
Dataset Pathnamepass1.3
Presentation Formatpinr_40armcaliper
Dataset CreationSat Apr 02 08:29:58 2022
Charted byDepth in Feet scaled 1:240

4.5	MAXIMUM DIAMETER (in)	5.5	LTEN	0	40 Radii .125 Inc. (in)	5
4.5	MINIMUM DIAMETER (in)	5.5				
0	DEVI (deg)	100	0	2000		
4.5	AVERAGE DIAMETER (in)	5.5				
-100	LSPD (ft/min)	100				
0	RB (deg)	360				
4.5	CASEID (in)	5.5				
WTEMP (degF)						





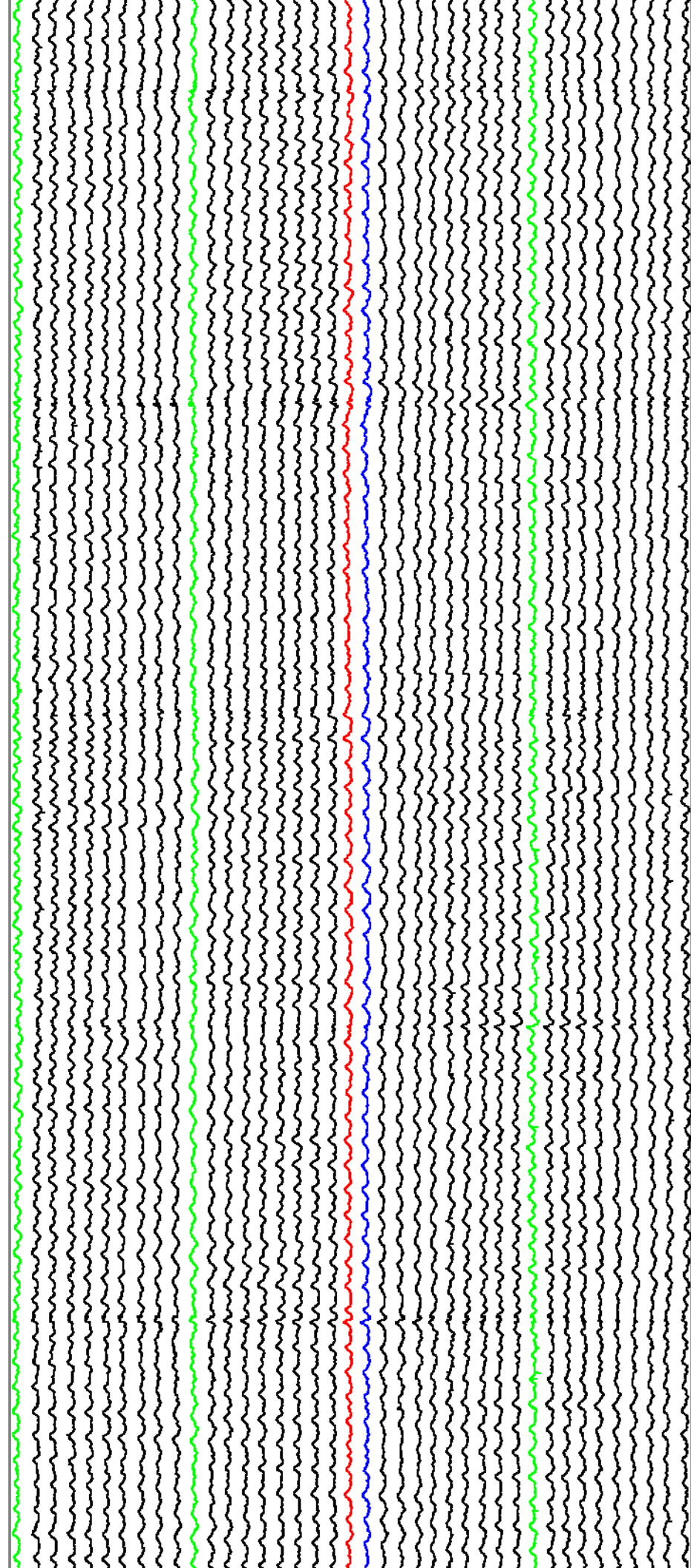


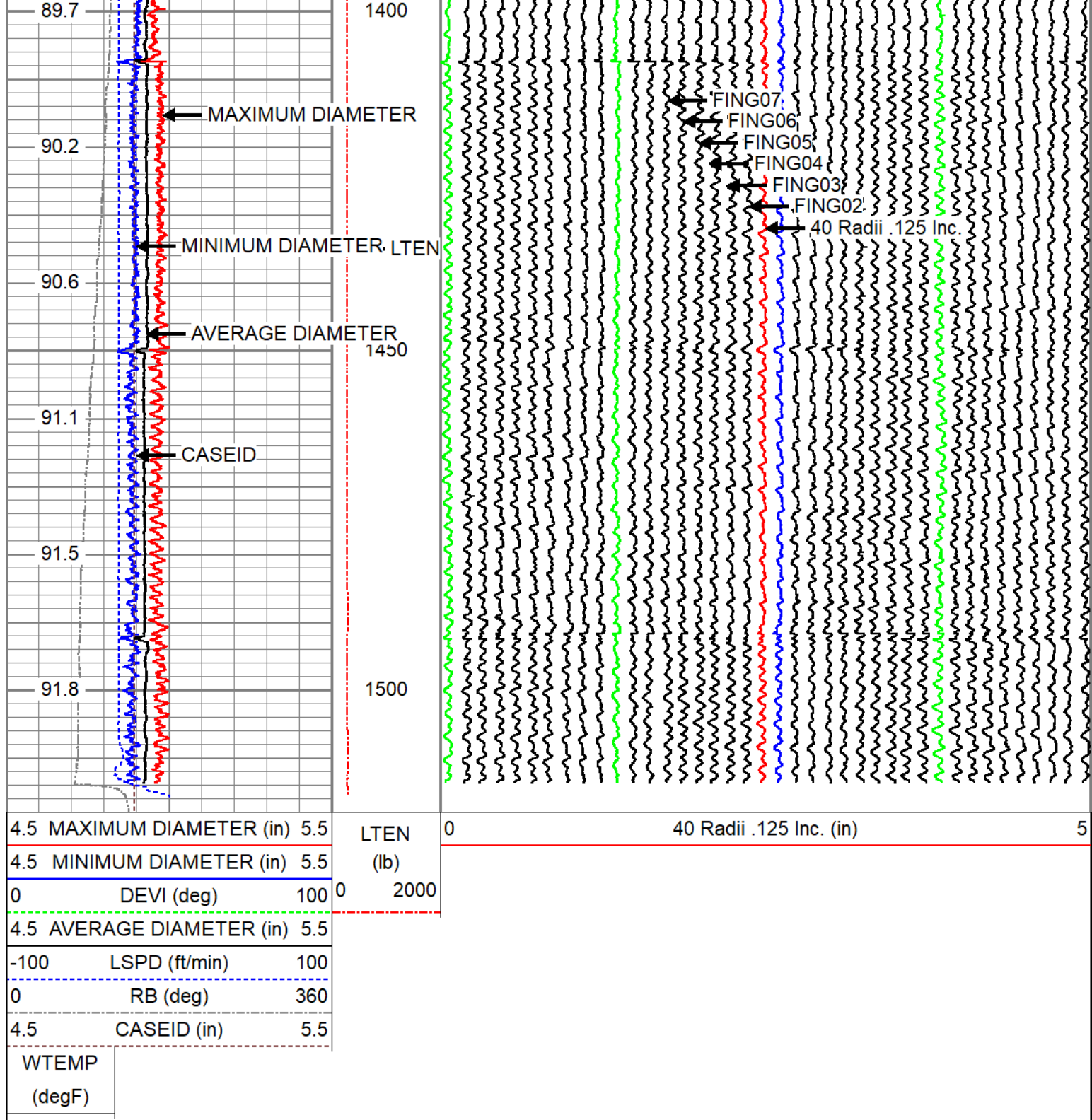
1200

1250

1300

1350





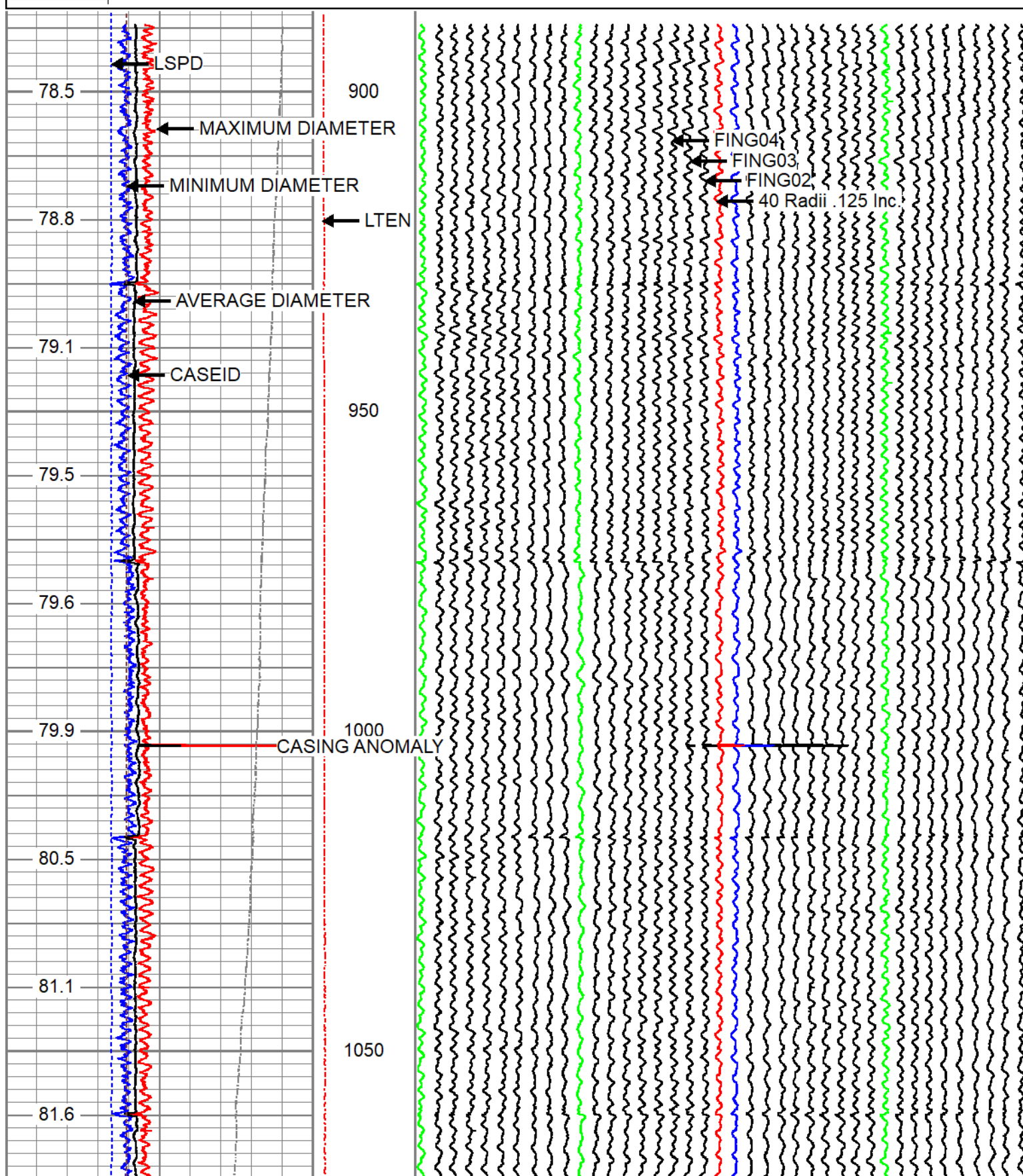
VERIFICATION PASS

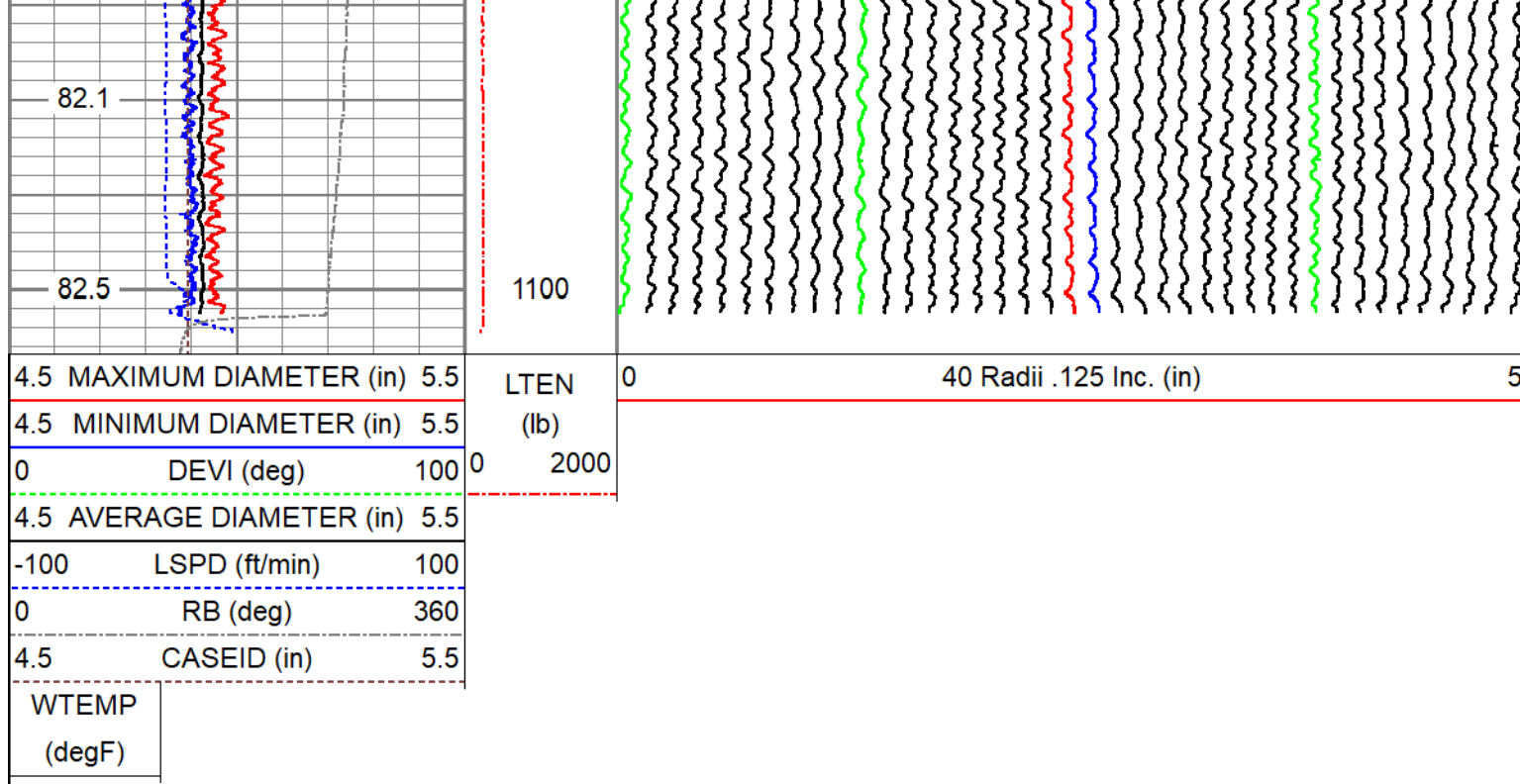
ZERO PRESSURE AT SURFACE


Database File civitas_warner 02b-10h-e165_2022-04-02_mfcaliper.db
 Dataset Pathname pass1.4
 Presentation Format pinr_40armcaliper
 Dataset Creation Sat Apr 02 08:54:29 2022
 Charted by Depth in Feet scaled 1:240

4.5	MAXIMUM DIAMETER (in)	5.5	LTEN	0	40 Radii .125 Inc. (in)	5
4.5	MINIMUM DIAMETER (in)	5.5	(lb)			

0	DEVI (deg)	100	0	2000
4.5	AVERAGE DIAMETER (in)	5.5		
-100	LSPD (ft/min)	100		
0	RB (deg)	360		
4.5	CASEID (in)	5.5		
WTEMP				
(degF)				



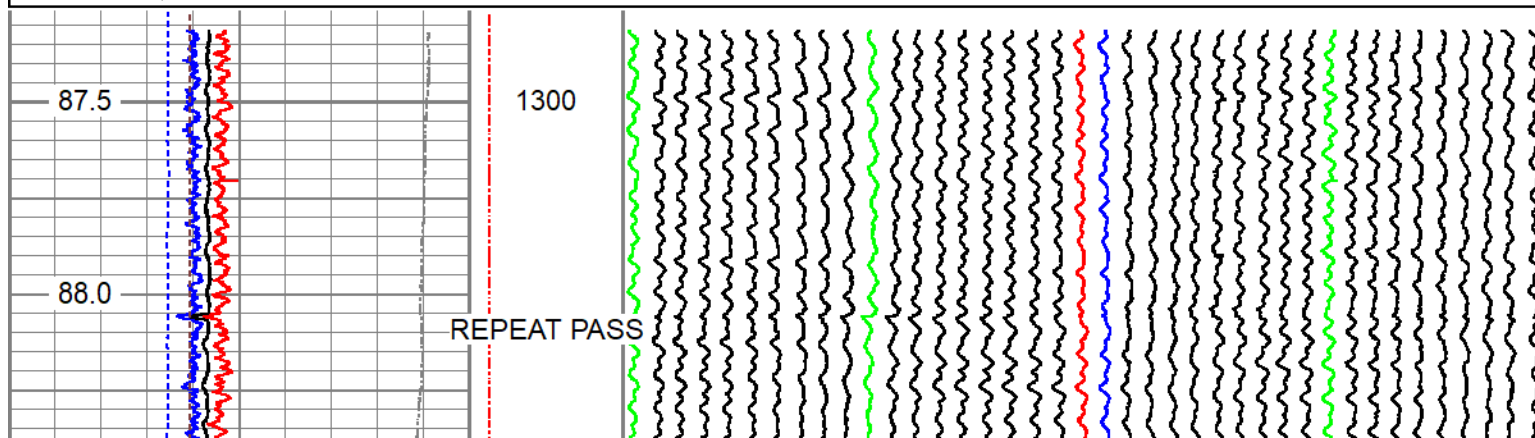
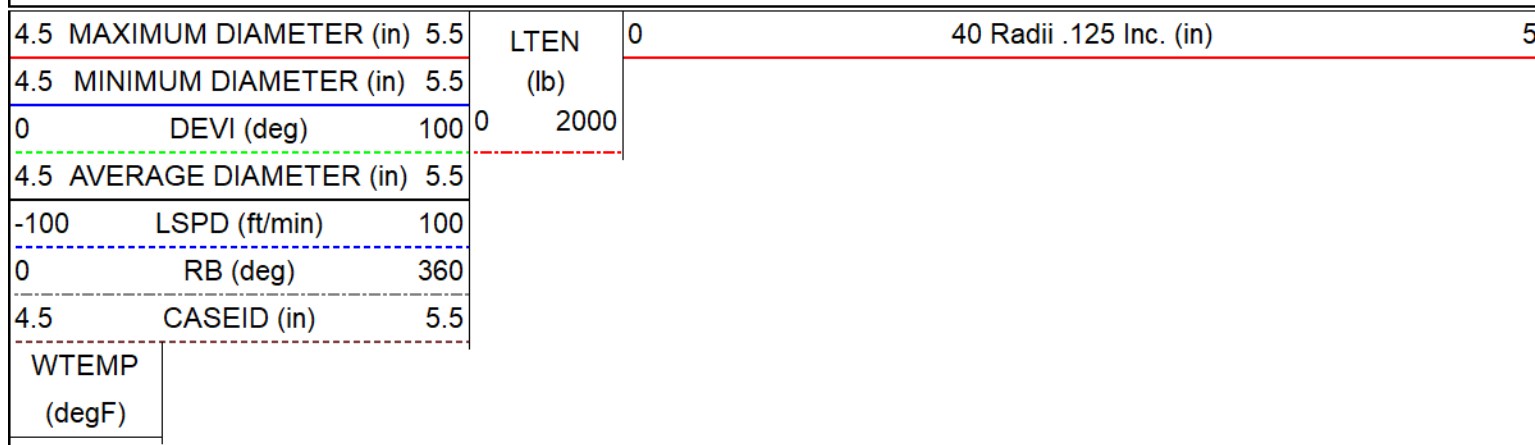


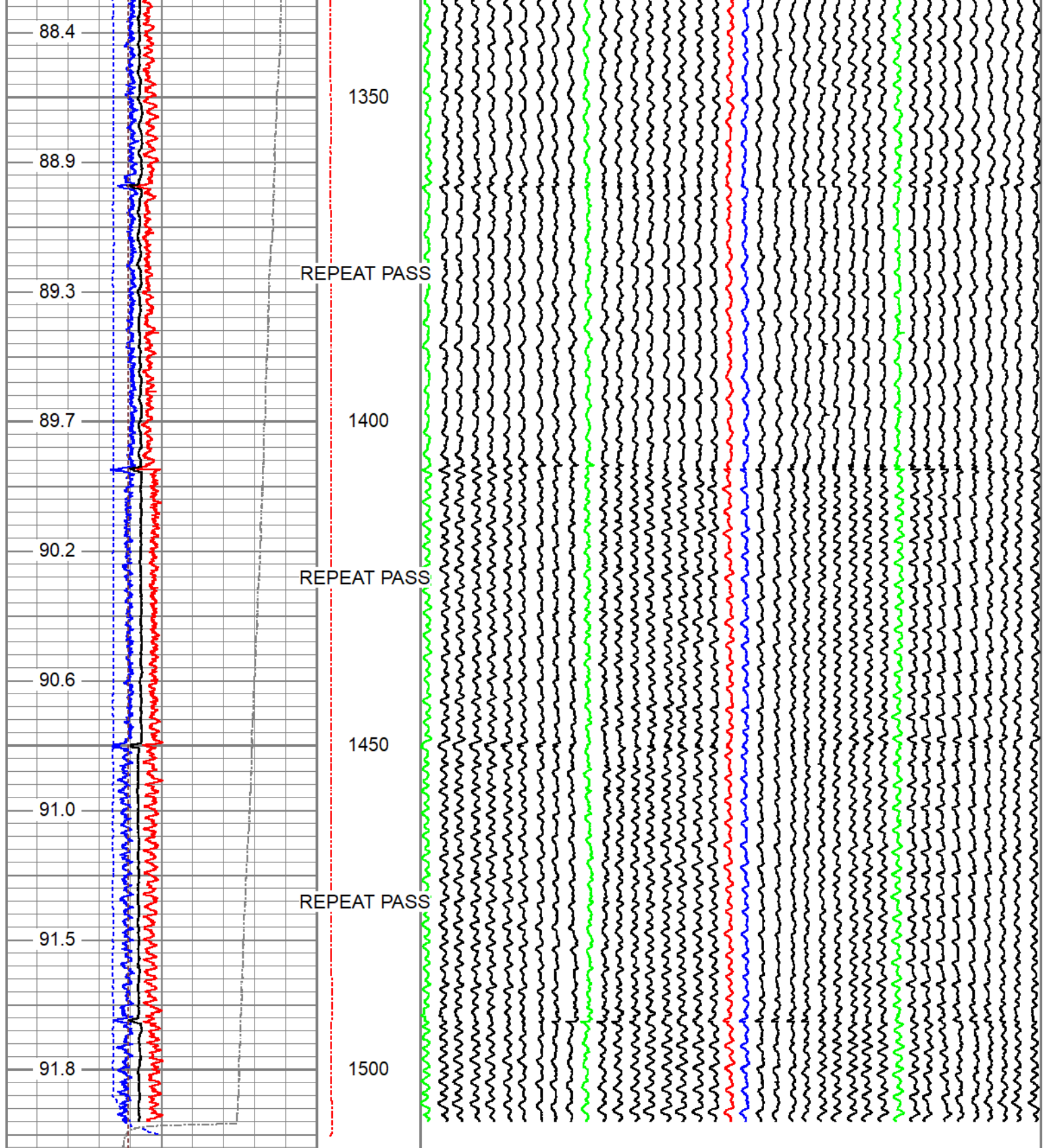


REPEAT SECTION

ZERO PSI APPLIED AT SURFACE

Database File	civitas_warner 02b-10h-e165_2022-04-02_mfcaliper.db
Dataset Pathname	pass1.2
Presentation Format	pinr_40armcaliper
Dataset Creation	Sat Apr 02 08:18:52 2022
Charted by	Depth in Feet scaled 1:240





4.5	MAXIMUM DIAMETER (in)	5.5	LTEN	0	40 Radii .125 Inc. (in)	5
4.5	MINIMUM DIAMETER (in)	5.5	(lb)			
0	DEVI (deg)	100	0	2000		
4.5	AVERAGE DIAMETER (in)	5.5				
-100	LSPD (ft/min)	100				
0	RB (deg)	360				
4.5	CASEID (in)	5.5				
WTEMP	(degF)					

Calibration Report

Database File civitas_warner 02b-10h-e165_2022-04-02_mfcaliper.db
 Dataset Pathname pass1.3
 Dataset Creation Sat Apr 02 08:29:58 2022

40 Arm Multi Sensor Caliper Calibration Report

Serial Number: 09007
 Tool Model: 40
 Performed: Sat Apr 02 08:03:59 2022

Ref ID:	3.13	4.00	5.00	6.00	7.00	Offset	in
Arm1	3.11	3.99	5.01	6.00	7.02	0.00	in
Arm2	3.11	3.98	4.99	5.98	6.98	0.00	in
Arm3	3.09	3.96	4.98	5.99	7.00	0.00	in
Arm4	3.17	4.05	5.07	6.05	7.05	0.00	in
Arm5	3.15	4.04	5.05	6.04	7.05	0.00	in
Arm6	3.10	3.98	5.00	6.00	6.99	0.00	in
Arm7	3.14	4.05	5.08	6.08	7.10	0.00	in
Arm8	3.17	4.05	5.06	6.06	7.04	0.00	in
Arm9	3.21	4.12	5.14	6.14	7.14	0.00	in
Arm10	3.23	4.12	5.14	6.13	7.12	0.00	in
Arm11	3.14	4.04	5.05	6.05	7.04	0.00	in
Arm12	3.22	4.14	5.14	6.13	7.12	0.00	in
Arm13	3.21	4.13	5.13	6.13	7.11	0.00	in
Arm14	3.21	4.11	5.11	6.10	7.07	0.00	in
Arm15	3.24	4.16	5.18	6.18	7.17	0.00	in
Arm16	3.20	4.11	5.11	6.10	7.08	0.00	in
Arm17	3.15	4.05	5.04	6.03	7.02	0.00	in
Arm18	3.19	4.11	5.12	6.12	7.10	0.00	in
Arm19	3.22	4.13	5.13	6.12	7.11	0.00	in
Arm20	3.21	4.13	5.12	6.10	7.06	0.00	in
Arm21	3.15	4.08	5.08	6.09	7.08	0.00	in
Arm22	3.18	4.10	5.10	6.09	7.05	0.00	in
Arm23	3.11	4.03	5.02	6.00	6.98	0.00	in
Arm24	3.15	4.07	5.07	6.06	7.04	0.00	in
Arm25	3.21	4.10	5.09	6.08	7.08	0.00	in
Arm26	3.14	4.03	5.00	5.97	6.94	0.00	in
Arm27	3.14	4.06	5.07	6.06	7.06	0.00	in
Arm28	3.03	3.93	4.89	5.87	6.85	0.00	in
Arm29	3.13	4.04	5.04	6.03	7.03	0.00	in
Arm30	3.13	4.02	5.03	6.01	6.98	0.00	in
Arm31	3.06	3.96	4.97	5.96	6.97	0.00	in
Arm32	3.09	3.98	4.98	5.96	6.94	0.00	in
Arm33	3.25	4.12	5.11	6.10	7.12	0.00	in
Arm34	3.12	3.98	4.97	5.95	6.95	0.00	in
Arm35	3.08	3.97	4.98	5.98	6.98	0.00	in
Arm36	3.08	3.96	4.96	5.95	6.95	0.00	in
Arm37	3.08	3.97	4.96	5.96	6.98	0.00	in
Arm38	3.09	3.97	4.98	5.97	6.99	0.00	in
Arm39	3.14	4.02	5.03	6.02	7.03	0.00	in
Arm40	3.10	3.99	5.00	5.99	6.98	0.00	in

* Bad

40 Arm Multi Sensor Caliper Verification Report

Performed: Pre Verification Mon Nov 29 07:20:03 2021 Post Verification Mon Nov 29 09:49:54 2021

Ref ID: 5.00 5.00 in

Min.	4.99	4.73	in
Max.	5.00	5.00	in
Avg.	5.00	4.96	in
Dia1	5.00	5.00	in
Dia2	5.00	4.98	in
Dia3	4.99	4.99	in
Dia4	5.00	4.98	in
Dia5	5.00	4.99	in
Dia6	5.00	4.98	in
Dia7	5.00	4.99	in
Dia8	5.00	4.98	in
Dia9	4.99	4.99	in
Dia10	5.00	4.99	in
Dia11	4.99	4.99	in
Dia12	5.00	4.98	in
Dia13	5.00	4.76	in
Dia14	5.00	4.97	in
Dia15	5.00	4.73	in
Dia16	5.00	4.98	in
Dia17	5.00	4.99	in
Dia18	5.00	4.98	in
Dia19	5.00	4.99	in
Dia20	5.00	4.98	in



ClearWell
DYNAMICS

Company	CRESTONE PEAK RESOURCES
Well	WARNER 02B-10H-E165
Field	WATTENBERG
County	WELD
State	COLORADO