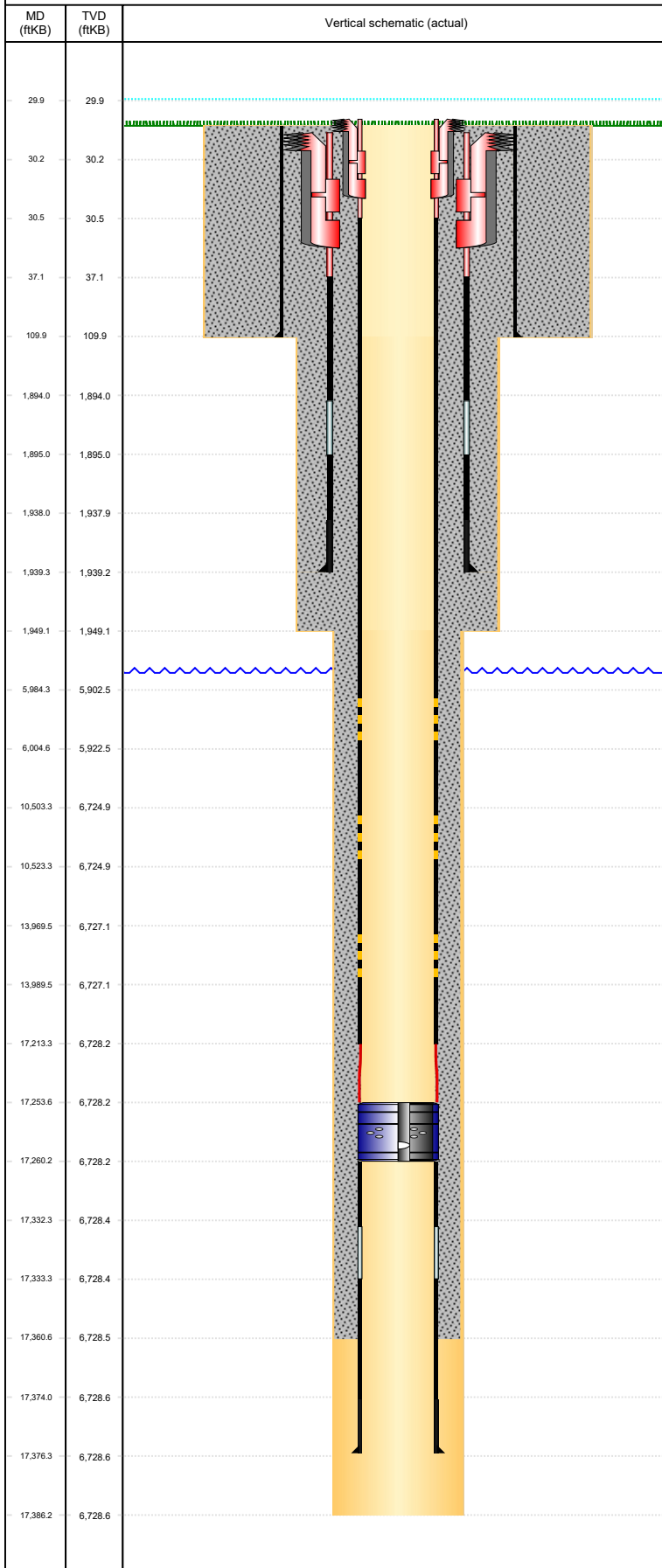


**Well Name: GUTTERSEN D12-765**

HORIZONTAL, ORIGINAL HOLE, 5/18/2022 11:25:28 AM



Well Header						
API 05-123-49073	Business Unit DJ BASIN	District 15	Well Config HORIZONTAL			
Original KB Elevation (ft) 4,775	KB - GL / MSL (ftKB) 30.00	Spud Date 4/19/2022	P & A Date			
Comment THERE IS AN EXCEPTION TO THE COGCC LOGGING REQUIREMENTS RULE 317.p. A cased-hole neutron log with gamma-ray log will be run from the kick-off point into the surface casing. See Sundry Doc. #402491254 dated 9/22/2020 for COA details.  MLVT will be designed and implemented consistent with the June 13, 2014 COGCC MLVT policy. See Sundry Doc. #402506338 dated 03/30/2021						
Directions To Well From intersection of CR53 & 34 (west/main gate) east 2.5 miles, north 1.5 miles, east 0.5 of a mile, northeast 0.4 of a mile, north into D01-03 Multi						
Congressional Location						
Quarter 3 SE	Quarter 4 SW	Section 1	Township 3	Twnshp N/S Dir N	Range 64	Range E/W Dir W
Bottom Hole Legal Location						
Bottom Hole Legal Location 6 65/SESW-01-003N-064W6PM						
Plug Back Total Depths						
Date	Depth (ftKB)	Method		Com		
Wellbore Sections						
Section Des		Size (in)	Act Top, MD (ftKB)		Act Btm, MD (ftKB)	
CONDUCTOR		26	30		110	
SURFACE		13 1/2	110		1,949	
PRODUCTION		8 1/2	1949		17,386	
Zone Statuses						
Zone Name	Status Date	Status	Fluid Type	Job	Prod Method	
Casing Strings						
CONDUCTOR, 110.0ftKB						
Casing Description CONDUCTOR	Run Date 3/27/2022	OD (in) 16	Wt/Len (l...) 36.94	Grade A-52A	Top, MD (ft...) 30.0	MD (ftKB) 110.0
SURFACE, 1,939.4ftKB						
Casing Description SURFACE	Run Date 4/19/2022	OD (in) 9 5/8	Wt/Len (l...) 36.00	Grade J-55	Top, MD (ft...) 30.0	MD (ftKB) 1,939.4
PRODUCTION, 17,376.2ftKB						
Casing Description PRODUCTION	Run Date 5/3/2022	OD (in) 5 1/2	Wt/Len (l...) 17.00	Grade P-110	Top, MD (ft...) 30.0	MD (ftKB) 17,376.2
Cement						
Description Conductor Cement				Top Depth (ftKB) 30.0	Bottom Depth (ftKB) 110.0	
Description Surface Casing Cement				Top Depth (ftKB) 30.0	Bottom Depth (ftKB) 1,939.4	
Description Production Casing Cement				Top Depth (ftKB) 30.0	Bottom Depth (ftKB) 17,360.6	
Tubing Strings						
Tubing Description TUBING - PRODUCTION	Run Date	String...	ID (in)	Wt (lb/ft)	Grade	Len (ft) Set De...
Other In Hole						
Run Date	Des	Make	OD (in)	Top (ftKB)	Btm (ftKB)	Pr op R un ?
Logs						
Date	Type			Top, MD (ftKB)	Btm, MD (ftKB)	