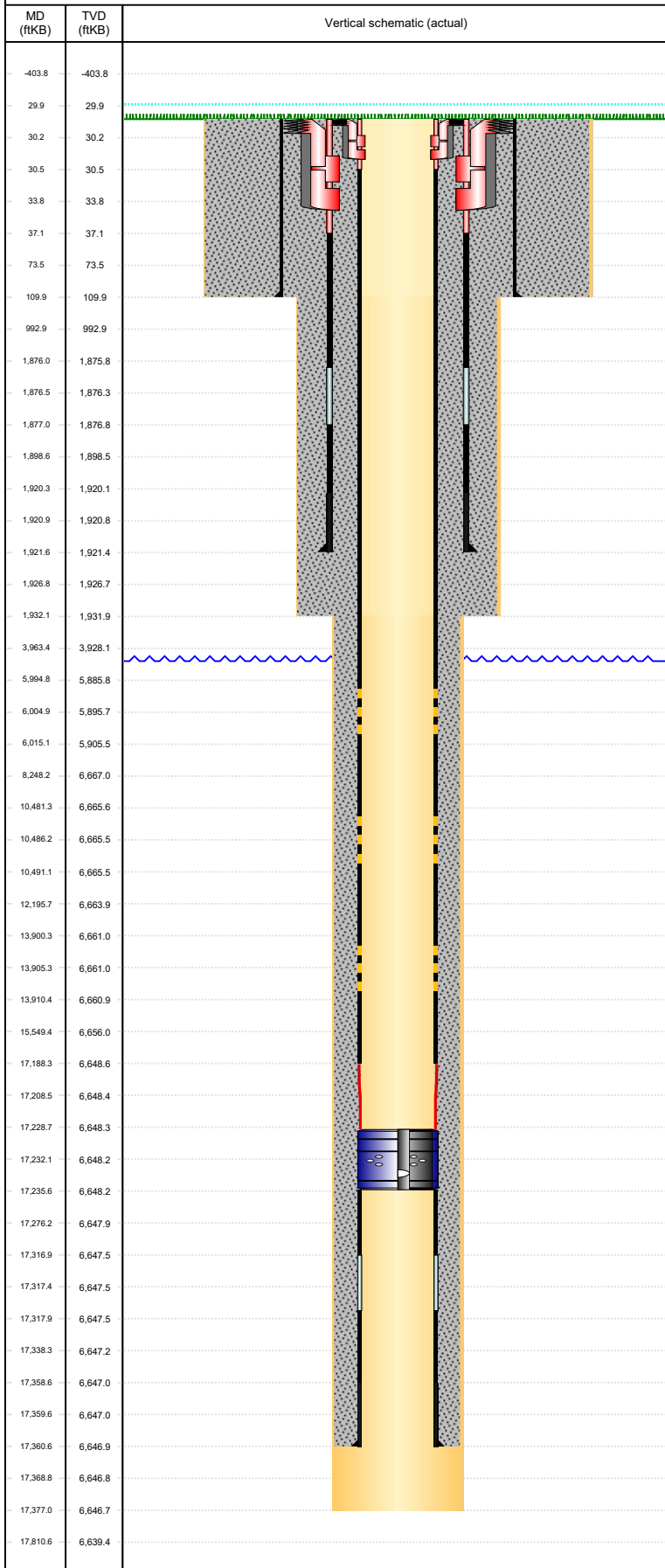


Well Name: GUTTERSEN D12-775

HORIZONTAL, ORIGINAL HOLE, 5/18/2022 11:26:11 AM



Well Header							
API 05-123-49080	Business Unit DJ BASIN		District 15		Well Config HORIZONTAL		
Original KB Elevation (ft) 4,775	KB - GL / MSL (ftKB) 30.00		Spud Date 4/19/2022		P & A Date		
Comment THERE IS AN EXCEPTION TO THE COGCC LOGGING REQUIREMENTS RULE 317.p. A cased-hole neutron log with gamma-ray log will be run from the kick-off point into the surface casing. See Sundry Doc. #402491254 dated 9/22/2020 for COA details. MLVT will be designed and implemented consistent with the June 13, 2014 COGCC MLVT policy. See Sundry Doc. #402506338 dated 03/30/2021							
Directions To Well From intersection of CR53 & 34 (west/main gate) east 2.5 miles, north 1.5 miles, east 0.5 of a mile, northeast 0.4 of a mile, north into D01-03 Multi							
Congressional Location							
Quarter 3 SW	Quarter 4 SW	Section 1	Township 3	Twnshp N/S Dir N	Range 64	Range E/W Dir W	
Bottom Hole Legal Location							
Bottom Hole Legal Location 6 75/SWSW-01-003N-064W6PM							
Plug Back Total Depths							
Date	Depth (ftKB)	Method			Com		
Wellbore Sections							
Section Des		Size (in)		Act Top, MD (ftKB)		Act Btm, MD (ftKB)	
CONDUCTOR		26		30		110	
SURFACE		13 1/2		110		1,932	
PRODUCTION		8 1/2		1932		17,377	
Zone Statuses							
Zone Name	Status Date	Status	Fluid Type	Job	Prod Method		
Casing Strings							
CONDUCTOR, 110.0ftKB							
Casing Description CONDUCTOR	Run Date 3/28/2022	OD (in) 16	Wt/Len (l... 36.94	Grade A-52A	Top, MD (ft... 30.0	MD (ftKB) 110.0	
SURFACE, 1,921.6ftKB							
Casing Description SURFACE	Run Date 4/20/2022	OD (in) 9 5/8	Wt/Len (l... 36.00	Grade J-55	Top, MD (ft... 30.0	MD (ftKB) 1,921.6	
Production, 17,360.6ftKB							
Casing Description Production	Run Date 4/29/2022	OD (in) 5 1/2	Wt/Len (l... 17.00	Grade P-110	Top, MD (ft... 30.0	MD (ftKB) 17,360.6	
Cement							
Description Conductor Cement				Top Depth (ftKB) 30.0		Bottom Depth (ftKB) 110.0	
Description Surface Casing Cement				Top Depth (ftKB) 30.0		Bottom Depth (ftKB) 1,921.6	
Description Production Casing Cement				Top Depth (ftKB) 30.0		Bottom Depth (ftKB) 17,360.6	
Tubing Strings							
Tubing Description TUBING - PRODUCTION	Run Date	String...	ID (in)	Wt (lb/ft)	Grade	Len (ft)	Set De...
Other In Hole							
Run Date	Des		Make	OD (in)	Top (ftKB)	Btm (ftKB)	Pr op R un ?
Logs							
Date	Type				Top, MD (ftKB)	Btm, MD (ftKB)	