



# **GMT Exploration Company, LLC**

**Elbert County, CO (NAD 83)**

**Marble-Redstone Pad**

**REDSTONE 6-65 24-36 2HN**

**Wellbore #1**

**Plan: Design #1**

## **Standard Planning Report**

**24 May, 2019**



Project: Elbert County, CO (NAD 83)  
 Site: Marble-Redstone Pad  
 Well: REDSTONE 6-65 24-36 2HN  
 Wellbore: Wellbore #1  
 Design: Design #1

# GMT Exploration Company, LLC

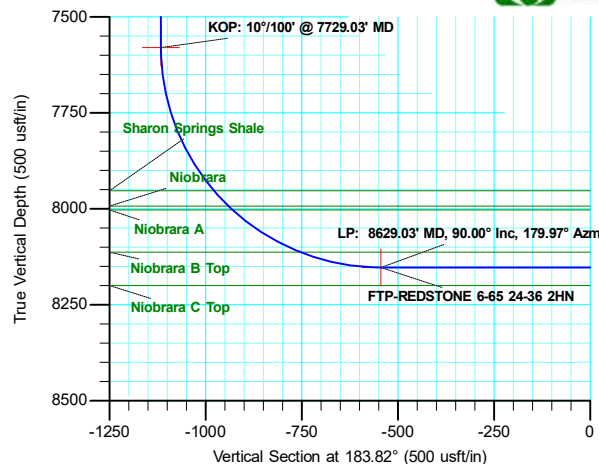
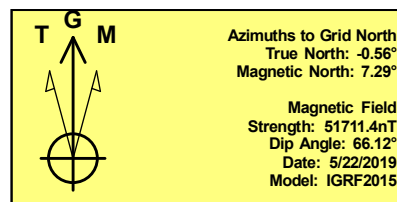
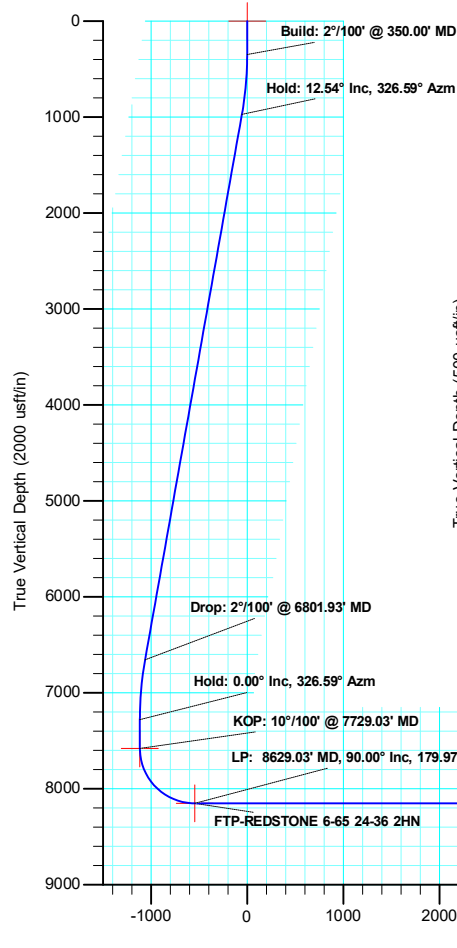
Geodetic System: US State Plane 1983  
 Datum: North American Datum 1983  
 Ellipsoid: GRS 1980  
 Zone: Colorado Central Zone  
 System Datum: Mean Sea Level

## WELL DETAILS: REDSTONE 6-65 24-36 2HN

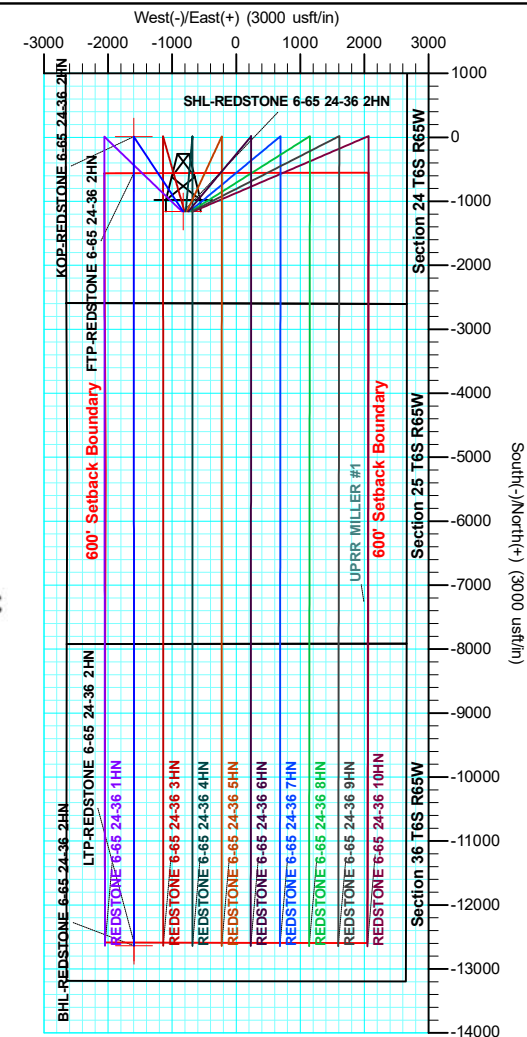
+N/-S	+E/-W	Northing	Ground Level: Easting	6278.00 Latitude	Longitude
-1157.41	-827.10	1612079.92	3248884.90	39.510619	-104.617859

## SECTION DETAILS

MD	Inc	Azi	TVD	+N/-S	+E/-W	Dleg	TFace	VSec	Target
0.00	0.00	0.00	0.00	-1157.41	-827.10	0.00	0.00	0.00	
350.00	0.00	0.00	350.00	-1157.41	-827.10	0.00	0.00	0.00	
977.10	12.54	326.59	972.11	-1100.34	-864.74	2.00	326.59	-54.44	
6801.93	12.54	326.59	6657.93	-44.42	-1561.15	0.00	0.00	-1061.65	
7429.03	0.00	0.00	7280.04	12.65	-1598.79	2.00	180.00	-1116.09	
7729.03	0.00	0.00	7580.04	12.65	-1598.79	0.00	0.00	-1116.09	
8629.03	90.00	179.97	8153.00	-560.30	-1598.53	10.00	0.00	-544.42	FTP-REDSTONE 6-65 24-36 2HN
20655.67	90.00	179.97	8153.00	-12586.94	-1593.06	0.00	0.00	11455.17	LTP-REDSTONE 6-65 24-36 2HN
20705.67	90.00	179.97	8153.00	-12636.94	-1593.04	0.00	0.00	11505.05	BHL-REDSTONE 6-65 24-36 2HN



SHL: 1437 FSL/ 1828 FWL Sec. 24  
 FTP: 2031 FSL/ 1058 FWL Sec. 24  
 LTP: 600 FSL/ 1055 FWL Sec. 36  
 BHL: 550 FSL/ 1055 FWL Sec. 36



<b>Database:</b>	Local	<b>Local Co-ordinate Reference:</b>	Well REDSTONE 6-65 24-36 2HN
<b>Company:</b>	GMT Exploration Company, LLC	<b>TVD Reference:</b>	KB @ 6298.00usft
<b>Project:</b>	Elbert County, CO (NAD 83)	<b>MD Reference:</b>	KB @ 6298.00usft
<b>Site:</b>	Marble-Redstone Pad	<b>North Reference:</b>	Grid
<b>Well:</b>	REDSTONE 6-65 24-36 2HN	<b>Survey Calculation Method:</b>	Minimum Curvature
<b>Wellbore:</b>	Wellbore #1		
<b>Design:</b>	Design #1		

<b>Project</b>	Elbert County, CO (NAD 83)		
<b>Map System:</b>	US State Plane 1983	<b>System Datum:</b>	Mean Sea Level
<b>Geo Datum:</b>	North American Datum 1983		
<b>Map Zone:</b>	Colorado Central Zone		

Site		Marble-Redstone Pad			
Site Position:		Northing:	1,613,237.32 usft	Latitude:	39.513774
From:	Lat/Long	Easting:	3,249,712.00 usft	Longitude:	-104.614888
Position Uncertainty:	0.00 usft	Slot Radius:	13-3/16 "	Grid Convergence:	0.56 °

Well		REDSTONE 6-65 24-36 2HN				
Well Position	+N/-S	-1,157.41 usft	Northing:	1,612,079.92 usft	Latitude:	39.510619
	+E/-W	-827.10 usft	Easting:	3,248,884.90 usft	Longitude:	-104.617860
Position Uncertainty	0.00 usft		Wellhead Elevation:		Ground Level:	6,278.00 usft

<b>Wellbore</b>	Wellbore #1				
<b>Magnetics</b>	<b>Model Name</b>	<b>Sample Date</b>	<b>Declination (°)</b>	<b>Dip Angle (°)</b>	<b>Field Strength (nT)</b>
	IGRF2015	5/22/2019	7.85	66.12	51,711.41457011

<b>Design</b>	Design #1				
<b>Audit Notes:</b>					
<b>Version:</b>	<b>Phase:</b>	PLAN	<b>Tie On Depth:</b>	0.00	
<b>Vertical Section:</b>	<b>Depth From (TVD) (usft)</b>	<b>+N/-S (usft)</b>	<b>+E/-W (usft)</b>	<b>Direction (°)</b>	
	0.00	0.00	0.00	183.82	

<b>Plan Survey Tool Program</b>	<b>Date</b>	5/24/2019			
<b>Depth From (usft)</b>	<b>Depth To (usft)</b>	<b>Survey (Wellbore)</b>	<b>Tool Name</b>	<b>Remarks</b>	
1	0.00	20,705.67	Design #1 (Wellbore #1)	MWD	
				OWSG MWD - Standard	

<b>Plan Sections</b>										
<b>Measured Depth (usft)</b>	<b>Inclination (°)</b>	<b>Azimuth (°)</b>	<b>Vertical Depth (usft)</b>	<b>+N/-S (usft)</b>	<b>+E/-W (usft)</b>	<b>Dogleg Rate (°/100usft)</b>	<b>Build Rate (°/100usft)</b>	<b>Turn Rate (°/100usft)</b>	<b>TFO (°)</b>	<b>Target</b>
0.00	0.00	0.00	0.00	0.00	0.00	0.00	0.00	0.00	0.00	
350.00	0.00	0.00	350.00	0.00	0.00	0.00	0.00	0.00	0.00	
977.10	12.54	326.59	972.11	57.07	-37.64	2.00	2.00	0.00	326.59	
6,801.93	12.54	326.59	6,657.93	1,112.99	-734.06	0.00	0.00	0.00	0.00	
7,429.03	0.00	0.00	7,280.04	1,170.06	-771.70	2.00	-2.00	0.00	180.00	
7,729.03	0.00	0.00	7,580.04	1,170.06	-771.70	0.00	0.00	0.00	0.00	
8,629.03	90.00	179.97	8,153.00	597.10	-771.44	10.00	10.00	0.00	0.00	FTP-REDSTONE 6
20,655.67	90.00	179.97	8,153.00	-11,429.53	-765.96	0.00	0.00	0.00	0.00	LTP-REDSTONE 6-
20,705.67	90.00	179.97	8,153.00	-11,479.53	-765.94	0.00	0.00	0.00	0.00	BHL-REDSTONE 6

<b>Database:</b>	Local	<b>Local Co-ordinate Reference:</b>	Well REDSTONE 6-65 24-36 2HN
<b>Company:</b>	GMT Exploration Company, LLC	<b>TVD Reference:</b>	KB @ 6298.00usft
<b>Project:</b>	Elbert County, CO (NAD 83)	<b>MD Reference:</b>	KB @ 6298.00usft
<b>Site:</b>	Marble-Redstone Pad	<b>North Reference:</b>	Grid
<b>Well:</b>	REDSTONE 6-65 24-36 2HN	<b>Survey Calculation Method:</b>	Minimum Curvature
<b>Wellbore:</b>	Wellbore #1		
<b>Design:</b>	Design #1		

Planned Survey									
Measured Depth (usft)	Inclination (°)	Azimuth (°)	Vertical Depth (usft)	+N/-S (usft)	+E/-W (usft)	Vertical Section (usft)	Dogleg Rate (°/100usft)	Build Rate (°/100usft)	Turn Rate (°/100usft)
0.00	0.00	0.00	0.00	0.00	0.00	0.00	0.00	0.00	0.00
<b>SHL-REDSTONE 6-65 24-36 2HN</b>									
100.00	0.00	0.00	100.00	0.00	0.00	0.00	0.00	0.00	0.00
200.00	0.00	0.00	200.00	0.00	0.00	0.00	0.00	0.00	0.00
300.00	0.00	0.00	300.00	0.00	0.00	0.00	0.00	0.00	0.00
350.00	0.00	0.00	350.00	0.00	0.00	0.00	0.00	0.00	0.00
<b>Build: 2°/100' @ 350.00' MD</b>									
400.00	1.00	326.59	400.00	0.36	-0.24	-0.35	2.00	2.00	0.00
500.00	3.00	326.59	499.93	3.28	-2.16	-3.13	2.00	2.00	0.00
600.00	5.00	326.59	599.68	9.10	-6.00	-8.68	2.00	2.00	0.00
700.00	7.00	326.59	699.13	17.83	-11.76	-17.00	2.00	2.00	0.00
800.00	9.00	326.59	798.15	29.44	-19.42	-28.09	2.00	2.00	0.00
900.00	11.00	326.59	896.63	43.94	-28.98	-41.91	2.00	2.00	0.00
977.10	12.54	326.59	972.11	57.07	-37.64	-54.44	2.00	2.00	0.00
<b>Hold: 12.54° Inc, 326.59° Azm</b>									
1,000.00	12.54	326.59	994.46	61.22	-40.38	-58.40	0.00	0.00	0.00
1,100.00	12.54	326.59	1,092.07	79.35	-52.33	-75.69	0.00	0.00	0.00
1,200.00	12.54	326.59	1,189.68	97.48	-64.29	-92.98	0.00	0.00	0.00
1,300.00	12.54	326.59	1,287.30	115.60	-76.24	-110.27	0.00	0.00	0.00
1,400.00	12.54	326.59	1,384.91	133.73	-88.20	-127.56	0.00	0.00	0.00
1,500.00	12.54	326.59	1,482.53	151.86	-100.16	-144.85	0.00	0.00	0.00
1,600.00	12.54	326.59	1,580.14	169.99	-112.11	-162.15	0.00	0.00	0.00
1,700.00	12.54	326.59	1,677.75	188.12	-124.07	-179.44	0.00	0.00	0.00
1,800.00	12.54	326.59	1,775.37	206.24	-136.02	-196.73	0.00	0.00	0.00
1,900.00	12.54	326.59	1,872.98	224.37	-147.98	-214.02	0.00	0.00	0.00
2,000.00	12.54	326.59	1,970.59	242.50	-159.94	-231.31	0.00	0.00	0.00
2,100.00	12.54	326.59	2,068.21	260.63	-171.89	-248.61	0.00	0.00	0.00
2,200.00	12.54	326.59	2,165.82	278.76	-183.85	-265.90	0.00	0.00	0.00
2,300.00	12.54	326.59	2,263.44	296.88	-195.80	-283.19	0.00	0.00	0.00
2,400.00	12.54	326.59	2,361.05	315.01	-207.76	-300.48	0.00	0.00	0.00
2,500.00	12.54	326.59	2,458.66	333.14	-219.72	-317.77	0.00	0.00	0.00
2,600.00	12.54	326.59	2,556.28	351.27	-231.67	-335.06	0.00	0.00	0.00
2,700.00	12.54	326.59	2,653.89	369.40	-243.63	-352.36	0.00	0.00	0.00
2,800.00	12.54	326.59	2,751.50	387.52	-255.59	-369.65	0.00	0.00	0.00
2,900.00	12.54	326.59	2,849.12	405.65	-267.54	-386.94	0.00	0.00	0.00
3,000.00	12.54	326.59	2,946.73	423.78	-279.50	-404.23	0.00	0.00	0.00
3,100.00	12.54	326.59	3,044.34	441.91	-291.45	-421.52	0.00	0.00	0.00
3,200.00	12.54	326.59	3,141.96	460.03	-303.41	-438.82	0.00	0.00	0.00
3,300.00	12.54	326.59	3,239.57	478.16	-315.37	-456.11	0.00	0.00	0.00
3,400.00	12.54	326.59	3,337.19	496.29	-327.32	-473.40	0.00	0.00	0.00
3,500.00	12.54	326.59	3,434.80	514.42	-339.28	-490.69	0.00	0.00	0.00
3,600.00	12.54	326.59	3,532.41	532.55	-351.23	-507.98	0.00	0.00	0.00
3,700.00	12.54	326.59	3,630.03	550.67	-363.19	-525.27	0.00	0.00	0.00
3,800.00	12.54	326.59	3,727.64	568.80	-375.15	-542.57	0.00	0.00	0.00
3,900.00	12.54	326.59	3,825.25	586.93	-387.10	-559.86	0.00	0.00	0.00
4,000.00	12.54	326.59	3,922.87	605.06	-399.06	-577.15	0.00	0.00	0.00
4,100.00	12.54	326.59	4,020.48	623.19	-411.01	-594.44	0.00	0.00	0.00
4,200.00	12.54	326.59	4,118.10	641.31	-422.97	-611.73	0.00	0.00	0.00
4,300.00	12.54	326.59	4,215.71	659.44	-434.93	-629.02	0.00	0.00	0.00
4,400.00	12.54	326.59	4,313.32	677.57	-446.88	-646.32	0.00	0.00	0.00
4,500.00	12.54	326.59	4,410.94	695.70	-458.84	-663.61	0.00	0.00	0.00
4,600.00	12.54	326.59	4,508.55	713.83	-470.79	-680.90	0.00	0.00	0.00
4,700.00	12.54	326.59	4,606.16	731.95	-482.75	-698.19	0.00	0.00	0.00

<b>Database:</b>	Local	<b>Local Co-ordinate Reference:</b>	Well REDSTONE 6-65 24-36 2HN
<b>Company:</b>	GMT Exploration Company, LLC	<b>TVD Reference:</b>	KB @ 6298.00usft
<b>Project:</b>	Elbert County, CO (NAD 83)	<b>MD Reference:</b>	KB @ 6298.00usft
<b>Site:</b>	Marble-Redstone Pad	<b>North Reference:</b>	Grid
<b>Well:</b>	REDSTONE 6-65 24-36 2HN	<b>Survey Calculation Method:</b>	Minimum Curvature
<b>Wellbore:</b>	Wellbore #1		
<b>Design:</b>	Design #1		

Planned Survey									
Measured Depth (usft)	Inclination (°)	Azimuth (°)	Vertical Depth (usft)	+N/-S (usft)	+E/-W (usft)	Vertical Section (usft)	Dogleg Rate (°/100usft)	Build Rate (°/100usft)	Turn Rate (°/100usft)
4,800.00	12.54	326.59	4,703.78	750.08	-494.71	-715.48	0.00	0.00	0.00
4,900.00	12.54	326.59	4,801.39	768.21	-506.66	-732.78	0.00	0.00	0.00
5,000.00	12.54	326.59	4,899.00	786.34	-518.62	-750.07	0.00	0.00	0.00
5,100.00	12.54	326.59	4,996.62	804.47	-530.57	-767.36	0.00	0.00	0.00
5,200.00	12.54	326.59	5,094.23	822.59	-542.53	-784.65	0.00	0.00	0.00
5,300.00	12.54	326.59	5,191.85	840.72	-554.49	-801.94	0.00	0.00	0.00
5,400.00	12.54	326.59	5,289.46	858.85	-566.44	-819.23	0.00	0.00	0.00
5,500.00	12.54	326.59	5,387.07	876.98	-578.40	-836.53	0.00	0.00	0.00
5,600.00	12.54	326.59	5,484.69	895.11	-590.35	-853.82	0.00	0.00	0.00
5,700.00	12.54	326.59	5,582.30	913.23	-602.31	-871.11	0.00	0.00	0.00
5,800.00	12.54	326.59	5,679.91	931.36	-614.27	-888.40	0.00	0.00	0.00
5,900.00	12.54	326.59	5,777.53	949.49	-626.22	-905.69	0.00	0.00	0.00
6,000.00	12.54	326.59	5,875.14	967.62	-638.18	-922.99	0.00	0.00	0.00
6,100.00	12.54	326.59	5,972.75	985.75	-650.13	-940.28	0.00	0.00	0.00
6,200.00	12.54	326.59	6,070.37	1,003.87	-662.09	-957.57	0.00	0.00	0.00
6,300.00	12.54	326.59	6,167.98	1,022.00	-674.05	-974.86	0.00	0.00	0.00
6,400.00	12.54	326.59	6,265.60	1,040.13	-686.00	-992.15	0.00	0.00	0.00
6,500.00	12.54	326.59	6,363.21	1,058.26	-697.96	-1,009.44	0.00	0.00	0.00
6,600.00	12.54	326.59	6,460.82	1,076.39	-709.91	-1,026.74	0.00	0.00	0.00
6,700.00	12.54	326.59	6,558.44	1,094.51	-721.87	-1,044.03	0.00	0.00	0.00
6,801.93	12.54	326.59	6,657.93	1,112.99	-734.06	-1,061.65	0.00	0.00	0.00
<b>Drop: 2°/100' @ 6801.93' MD</b>									
6,900.00	10.58	326.59	6,754.01	1,129.40	-744.88	-1,077.30	2.00	-2.00	0.00
7,000.00	8.58	326.59	6,852.61	1,143.29	-754.04	-1,090.56	2.00	-2.00	0.00
7,100.00	6.58	326.59	6,951.73	1,154.30	-761.30	-1,101.06	2.00	-2.00	0.00
7,200.00	4.58	326.59	7,051.25	1,162.42	-766.66	-1,108.80	2.00	-2.00	0.00
7,300.00	2.58	326.59	7,151.05	1,167.64	-770.10	-1,113.78	2.00	-2.00	0.00
7,400.00	0.58	326.59	7,251.01	1,169.94	-771.62	-1,115.97	2.00	-2.00	0.00
7,429.03	0.00	0.00	7,280.04	1,170.06	-771.70	-1,116.09	2.00	-2.00	0.00
<b>Hold: 0.00° Inc, 326.59° Azm</b>									
7,500.00	0.00	0.00	7,351.01	1,170.06	-771.70	-1,116.09	0.00	0.00	0.00
7,600.00	0.00	0.00	7,451.01	1,170.06	-771.70	-1,116.09	0.00	0.00	0.00
7,700.00	0.00	0.00	7,551.01	1,170.06	-771.70	-1,116.09	0.00	0.00	0.00
7,729.03	0.00	0.00	7,580.04	1,170.06	-771.70	-1,116.09	0.00	0.00	0.00
<b>KOP: 10°/100' @ 7729.03' MD - KOP-REDSTONE 6-65 24-36 2HN</b>									
7,750.00	2.10	179.97	7,601.00	1,169.68	-771.70	-1,115.71	10.00	10.00	0.00
7,800.00	7.10	179.97	7,650.83	1,165.67	-771.69	-1,111.71	10.00	10.00	0.00
7,850.00	12.10	179.97	7,700.11	1,157.34	-771.69	-1,103.40	10.00	10.00	0.00
7,900.00	17.10	179.97	7,748.48	1,144.74	-771.68	-1,090.83	10.00	10.00	0.00
7,950.00	22.10	179.97	7,795.57	1,127.98	-771.68	-1,074.10	10.00	10.00	0.00
8,000.00	27.10	179.97	7,841.02	1,107.17	-771.67	-1,053.34	10.00	10.00	0.00
8,050.00	32.10	179.97	7,884.48	1,082.49	-771.66	-1,028.71	10.00	10.00	0.00
8,100.00	37.10	179.97	7,925.63	1,054.11	-771.64	-1,000.40	10.00	10.00	0.00
8,150.00	42.10	179.97	7,964.14	1,022.25	-771.63	-968.61	10.00	10.00	0.00
8,200.00	47.10	179.97	7,999.74	987.15	-771.61	-933.59	10.00	10.00	0.00
8,250.00	52.10	179.97	8,032.13	949.09	-771.60	-895.62	10.00	10.00	0.00
8,300.00	57.10	179.97	8,061.09	908.35	-771.58	-854.97	10.00	10.00	0.00
8,350.00	62.10	179.97	8,086.39	865.24	-771.56	-811.95	10.00	10.00	0.00
8,400.00	67.10	179.97	8,107.83	820.09	-771.54	-766.90	10.00	10.00	0.00
8,450.00	72.10	179.97	8,125.26	773.24	-771.52	-720.16	10.00	10.00	0.00
8,500.00	77.10	179.97	8,138.53	725.05	-771.49	-672.08	10.00	10.00	0.00
8,550.00	82.10	179.97	8,147.56	675.89	-771.47	-623.03	10.00	10.00	0.00
8,600.00	87.10	179.97	8,152.26	626.13	-771.45	-573.38	10.00	10.00	0.00

<b>Database:</b>	Local	<b>Local Co-ordinate Reference:</b>	Well REDSTONE 6-65 24-36 2HN
<b>Company:</b>	GMT Exploration Company, LLC	<b>TVD Reference:</b>	KB @ 6298.00usft
<b>Project:</b>	Elbert County, CO (NAD 83)	<b>MD Reference:</b>	KB @ 6298.00usft
<b>Site:</b>	Marble-Redstone Pad	<b>North Reference:</b>	Grid
<b>Well:</b>	REDSTONE 6-65 24-36 2HN	<b>Survey Calculation Method:</b>	Minimum Curvature
<b>Wellbore:</b>	Wellbore #1		
<b>Design:</b>	Design #1		

Planned Survey									
Measured Depth (usft)	Inclination (°)	Azimuth (°)	Vertical Depth (usft)	+N/-S (usft)	+E/-W (usft)	Vertical Section (usft)	Dogleg Rate (°/100usft)	Build Rate (°/100usft)	Turn Rate (°/100usft)
8,629.03	90.00	179.97	8,153.00	597.10	-771.44	-544.42	10.00	10.00	0.00
<b>LP: 8629.03' MD, 90.00° Inc, 179.97° Azm - FTP-REDSTONE 6-65 24-36 2HN</b>									
8,700.00	90.00	179.97	8,153.00	526.14	-771.40	-473.61	0.00	0.00	0.00
8,800.00	90.00	179.97	8,153.00	426.14	-771.36	-373.84	0.00	0.00	0.00
8,900.00	90.00	179.97	8,153.00	326.14	-771.31	-274.06	0.00	0.00	0.00
9,000.00	90.00	179.97	8,153.00	226.14	-771.27	-174.29	0.00	0.00	0.00
9,100.00	90.00	179.97	8,153.00	126.14	-771.22	-74.51	0.00	0.00	0.00
9,200.00	90.00	179.97	8,153.00	26.14	-771.18	25.26	0.00	0.00	0.00
9,300.00	90.00	179.97	8,153.00	-73.86	-771.13	125.04	0.00	0.00	0.00
9,400.00	90.00	179.97	8,153.00	-173.86	-771.08	224.81	0.00	0.00	0.00
9,500.00	90.00	179.97	8,153.00	-273.86	-771.04	324.59	0.00	0.00	0.00
9,600.00	90.00	179.97	8,153.00	-373.86	-770.99	424.36	0.00	0.00	0.00
9,700.00	90.00	179.97	8,153.00	-473.86	-770.95	524.14	0.00	0.00	0.00
9,800.00	90.00	179.97	8,153.00	-573.86	-770.90	623.91	0.00	0.00	0.00
9,900.00	90.00	179.97	8,153.00	-673.86	-770.86	723.69	0.00	0.00	0.00
10,000.00	90.00	179.97	8,153.00	-773.86	-770.81	823.46	0.00	0.00	0.00
10,100.00	90.00	179.97	8,153.00	-873.86	-770.77	923.24	0.00	0.00	0.00
10,200.00	90.00	179.97	8,153.00	-973.86	-770.72	1,023.01	0.00	0.00	0.00
10,300.00	90.00	179.97	8,153.00	-1,073.86	-770.68	1,122.79	0.00	0.00	0.00
10,400.00	90.00	179.97	8,153.00	-1,173.86	-770.63	1,222.56	0.00	0.00	0.00
10,500.00	90.00	179.97	8,153.00	-1,273.86	-770.58	1,322.34	0.00	0.00	0.00
10,600.00	90.00	179.97	8,153.00	-1,373.86	-770.54	1,422.11	0.00	0.00	0.00
10,700.00	90.00	179.97	8,153.00	-1,473.86	-770.49	1,521.89	0.00	0.00	0.00
10,800.00	90.00	179.97	8,153.00	-1,573.86	-770.45	1,621.66	0.00	0.00	0.00
10,900.00	90.00	179.97	8,153.00	-1,673.86	-770.40	1,721.44	0.00	0.00	0.00
11,000.00	90.00	179.97	8,153.00	-1,773.86	-770.36	1,821.21	0.00	0.00	0.00
11,100.00	90.00	179.97	8,153.00	-1,873.86	-770.31	1,920.99	0.00	0.00	0.00
11,200.00	90.00	179.97	8,153.00	-1,973.86	-770.27	2,020.76	0.00	0.00	0.00
11,300.00	90.00	179.97	8,153.00	-2,073.86	-770.22	2,120.54	0.00	0.00	0.00
11,400.00	90.00	179.97	8,153.00	-2,173.86	-770.17	2,220.31	0.00	0.00	0.00
11,500.00	90.00	179.97	8,153.00	-2,273.86	-770.13	2,320.09	0.00	0.00	0.00
11,600.00	90.00	179.97	8,153.00	-2,373.86	-770.08	2,419.86	0.00	0.00	0.00
11,700.00	90.00	179.97	8,153.00	-2,473.86	-770.04	2,519.64	0.00	0.00	0.00
11,800.00	90.00	179.97	8,153.00	-2,573.86	-769.99	2,619.41	0.00	0.00	0.00
11,900.00	90.00	179.97	8,153.00	-2,673.86	-769.95	2,719.19	0.00	0.00	0.00
12,000.00	90.00	179.97	8,153.00	-2,773.86	-769.90	2,818.96	0.00	0.00	0.00
12,100.00	90.00	179.97	8,153.00	-2,873.86	-769.86	2,918.74	0.00	0.00	0.00
12,200.00	90.00	179.97	8,153.00	-2,973.86	-769.81	3,018.51	0.00	0.00	0.00
12,300.00	90.00	179.97	8,153.00	-3,073.86	-769.77	3,118.29	0.00	0.00	0.00
12,400.00	90.00	179.97	8,153.00	-3,173.86	-769.72	3,218.06	0.00	0.00	0.00
12,500.00	90.00	179.97	8,153.00	-3,273.86	-769.67	3,317.84	0.00	0.00	0.00
12,600.00	90.00	179.97	8,153.00	-3,373.86	-769.63	3,417.61	0.00	0.00	0.00
12,700.00	90.00	179.97	8,153.00	-3,473.86	-769.58	3,517.39	0.00	0.00	0.00
12,800.00	90.00	179.97	8,153.00	-3,573.86	-769.54	3,617.16	0.00	0.00	0.00
12,900.00	90.00	179.97	8,153.00	-3,673.86	-769.49	3,716.94	0.00	0.00	0.00
13,000.00	90.00	179.97	8,153.00	-3,773.86	-769.45	3,816.72	0.00	0.00	0.00
13,100.00	90.00	179.97	8,153.00	-3,873.86	-769.40	3,916.49	0.00	0.00	0.00
13,200.00	90.00	179.97	8,153.00	-3,973.86	-769.36	4,016.27	0.00	0.00	0.00
13,300.00	90.00	179.97	8,153.00	-4,073.86	-769.31	4,116.04	0.00	0.00	0.00
13,400.00	90.00	179.97	8,153.00	-4,173.86	-769.26	4,215.82	0.00	0.00	0.00
13,500.00	90.00	179.97	8,153.00	-4,273.86	-769.22	4,315.59	0.00	0.00	0.00
13,600.00	90.00	179.97	8,153.00	-4,373.86	-769.17	4,415.37	0.00	0.00	0.00
13,700.00	90.00	179.97	8,153.00	-4,473.86	-769.13	4,515.14	0.00	0.00	0.00
13,800.00	90.00	179.97	8,153.00	-4,573.86	-769.08	4,614.92	0.00	0.00	0.00



<b>Database:</b>	Local	<b>Local Co-ordinate Reference:</b>	Well REDSTONE 6-65 24-36 2HN
<b>Company:</b>	GMT Exploration Company, LLC	<b>TVD Reference:</b>	KB @ 6298.00usft
<b>Project:</b>	Elbert County, CO (NAD 83)	<b>MD Reference:</b>	KB @ 6298.00usft
<b>Site:</b>	Marble-Redstone Pad	<b>North Reference:</b>	Grid
<b>Well:</b>	REDSTONE 6-65 24-36 2HN	<b>Survey Calculation Method:</b>	Minimum Curvature
<b>Wellbore:</b>	Wellbore #1		
<b>Design:</b>	Design #1		

Planned Survey									
Measured Depth (usft)	Inclination (°)	Azimuth (°)	Vertical Depth (usft)	+N/-S (usft)	+E/-W (usft)	Vertical Section (usft)	Dogleg Rate (°/100usft)	Build Rate (°/100usft)	Turn Rate (°/100usft)
13,900.00	90.00	179.97	8,153.00	-4,673.86	-769.04	4,714.69	0.00	0.00	0.00
14,000.00	90.00	179.97	8,153.00	-4,773.86	-768.99	4,814.47	0.00	0.00	0.00
14,100.00	90.00	179.97	8,153.00	-4,873.86	-768.95	4,914.24	0.00	0.00	0.00
14,200.00	90.00	179.97	8,153.00	-4,973.86	-768.90	5,014.02	0.00	0.00	0.00
14,300.00	90.00	179.97	8,153.00	-5,073.86	-768.86	5,113.79	0.00	0.00	0.00
14,400.00	90.00	179.97	8,153.00	-5,173.86	-768.81	5,213.57	0.00	0.00	0.00
14,500.00	90.00	179.97	8,153.00	-5,273.86	-768.76	5,313.34	0.00	0.00	0.00
14,600.00	90.00	179.97	8,153.00	-5,373.86	-768.72	5,413.12	0.00	0.00	0.00
14,700.00	90.00	179.97	8,153.00	-5,473.86	-768.67	5,512.89	0.00	0.00	0.00
14,800.00	90.00	179.97	8,153.00	-5,573.86	-768.63	5,612.67	0.00	0.00	0.00
14,900.00	90.00	179.97	8,153.00	-5,673.86	-768.58	5,712.44	0.00	0.00	0.00
15,000.00	90.00	179.97	8,153.00	-5,773.86	-768.54	5,812.22	0.00	0.00	0.00
15,100.00	90.00	179.97	8,153.00	-5,873.86	-768.49	5,911.99	0.00	0.00	0.00
15,200.00	90.00	179.97	8,153.00	-5,973.86	-768.45	6,011.77	0.00	0.00	0.00
15,300.00	90.00	179.97	8,153.00	-6,073.86	-768.40	6,111.54	0.00	0.00	0.00
15,400.00	90.00	179.97	8,153.00	-6,173.86	-768.35	6,211.32	0.00	0.00	0.00
15,500.00	90.00	179.97	8,153.00	-6,273.86	-768.31	6,311.09	0.00	0.00	0.00
15,600.00	90.00	179.97	8,153.00	-6,373.86	-768.26	6,410.87	0.00	0.00	0.00
15,700.00	90.00	179.97	8,153.00	-6,473.86	-768.22	6,510.64	0.00	0.00	0.00
15,800.00	90.00	179.97	8,153.00	-6,573.86	-768.17	6,610.42	0.00	0.00	0.00
15,900.00	90.00	179.97	8,153.00	-6,673.86	-768.13	6,710.19	0.00	0.00	0.00
16,000.00	90.00	179.97	8,153.00	-6,773.86	-768.08	6,809.97	0.00	0.00	0.00
16,100.00	90.00	179.97	8,153.00	-6,873.86	-768.04	6,909.74	0.00	0.00	0.00
16,200.00	90.00	179.97	8,153.00	-6,973.86	-767.99	7,009.52	0.00	0.00	0.00
16,300.00	90.00	179.97	8,153.00	-7,073.86	-767.94	7,109.29	0.00	0.00	0.00
16,400.00	90.00	179.97	8,153.00	-7,173.86	-767.90	7,209.07	0.00	0.00	0.00
16,500.00	90.00	179.97	8,153.00	-7,273.86	-767.85	7,308.84	0.00	0.00	0.00
16,600.00	90.00	179.97	8,153.00	-7,373.86	-767.81	7,408.62	0.00	0.00	0.00
16,700.00	90.00	179.97	8,153.00	-7,473.86	-767.76	7,508.39	0.00	0.00	0.00
16,800.00	90.00	179.97	8,153.00	-7,573.86	-767.72	7,608.17	0.00	0.00	0.00
16,900.00	90.00	179.97	8,153.00	-7,673.86	-767.67	7,707.94	0.00	0.00	0.00
17,000.00	90.00	179.97	8,153.00	-7,773.86	-767.63	7,807.72	0.00	0.00	0.00
17,100.00	90.00	179.97	8,153.00	-7,873.86	-767.58	7,907.49	0.00	0.00	0.00
17,200.00	90.00	179.97	8,153.00	-7,973.86	-767.54	8,007.27	0.00	0.00	0.00
17,300.00	90.00	179.97	8,153.00	-8,073.86	-767.49	8,107.04	0.00	0.00	0.00
17,400.00	90.00	179.97	8,153.00	-8,173.86	-767.44	8,206.82	0.00	0.00	0.00
17,500.00	90.00	179.97	8,153.00	-8,273.86	-767.40	8,306.60	0.00	0.00	0.00
17,600.00	90.00	179.97	8,153.00	-8,373.86	-767.35	8,406.37	0.00	0.00	0.00
17,700.00	90.00	179.97	8,153.00	-8,473.86	-767.31	8,506.15	0.00	0.00	0.00
17,800.00	90.00	179.97	8,153.00	-8,573.86	-767.26	8,605.92	0.00	0.00	0.00
17,900.00	90.00	179.97	8,153.00	-8,673.86	-767.22	8,705.70	0.00	0.00	0.00
18,000.00	90.00	179.97	8,153.00	-8,773.86	-767.17	8,805.47	0.00	0.00	0.00
18,100.00	90.00	179.97	8,153.00	-8,873.86	-767.13	8,905.25	0.00	0.00	0.00
18,200.00	90.00	179.97	8,153.00	-8,973.86	-767.08	9,005.02	0.00	0.00	0.00
18,300.00	90.00	179.97	8,153.00	-9,073.86	-767.03	9,104.80	0.00	0.00	0.00
18,400.00	90.00	179.97	8,153.00	-9,173.86	-766.99	9,204.57	0.00	0.00	0.00
18,500.00	90.00	179.97	8,153.00	-9,273.86	-766.94	9,304.35	0.00	0.00	0.00
18,600.00	90.00	179.97	8,153.00	-9,373.86	-766.90	9,404.12	0.00	0.00	0.00
18,700.00	90.00	179.97	8,153.00	-9,473.86	-766.85	9,503.90	0.00	0.00	0.00
18,800.00	90.00	179.97	8,153.00	-9,573.86	-766.81	9,603.67	0.00	0.00	0.00
18,900.00	90.00	179.97	8,153.00	-9,673.86	-766.76	9,703.45	0.00	0.00	0.00
19,000.00	90.00	179.97	8,153.00	-9,773.86	-766.72	9,803.22	0.00	0.00	0.00
19,100.00	90.00	179.97	8,153.00	-9,873.86	-766.67	9,903.00	0.00	0.00	0.00
19,200.00	90.00	179.97	8,153.00	-9,973.86	-766.63	10,002.77	0.00	0.00	0.00

<b>Database:</b>	Local	<b>Local Co-ordinate Reference:</b>	Well REDSTONE 6-65 24-36 2HN
<b>Company:</b>	GMT Exploration Company, LLC	<b>TVD Reference:</b>	KB @ 6298.00usft
<b>Project:</b>	Elbert County, CO (NAD 83)	<b>MD Reference:</b>	KB @ 6298.00usft
<b>Site:</b>	Marble-Redstone Pad	<b>North Reference:</b>	Grid
<b>Well:</b>	REDSTONE 6-65 24-36 2HN	<b>Survey Calculation Method:</b>	Minimum Curvature
<b>Wellbore:</b>	Wellbore #1		
<b>Design:</b>	Design #1		

Planned Survey										
Measured Depth (usft)	Inclination (°)	Azimuth (°)	Vertical Depth (usft)	+N/-S (usft)	+E/-W (usft)	Vertical Section (usft)	Dogleg Rate (°/100usft)	Build Rate (°/100usft)	Turn Rate (°/100usft)	
19,300.00	90.00	179.97	8,153.00	-10,073.86	-766.58	10,102.55	0.00	0.00	0.00	
19,400.00	90.00	179.97	8,153.00	-10,173.86	-766.53	10,202.32	0.00	0.00	0.00	
19,500.00	90.00	179.97	8,153.00	-10,273.86	-766.49	10,302.10	0.00	0.00	0.00	
19,600.00	90.00	179.97	8,153.00	-10,373.86	-766.44	10,401.87	0.00	0.00	0.00	
19,700.00	90.00	179.97	8,153.00	-10,473.86	-766.40	10,501.65	0.00	0.00	0.00	
19,800.00	90.00	179.97	8,153.00	-10,573.86	-766.35	10,601.42	0.00	0.00	0.00	
19,900.00	90.00	179.97	8,153.00	-10,673.86	-766.31	10,701.20	0.00	0.00	0.00	
20,000.00	90.00	179.97	8,153.00	-10,773.86	-766.26	10,800.97	0.00	0.00	0.00	
20,100.00	90.00	179.97	8,153.00	-10,873.86	-766.22	10,900.75	0.00	0.00	0.00	
20,200.00	90.00	179.97	8,153.00	-10,973.86	-766.17	11,000.52	0.00	0.00	0.00	
20,300.00	90.00	179.97	8,153.00	-11,073.86	-766.12	11,100.30	0.00	0.00	0.00	
20,400.00	90.00	179.97	8,153.00	-11,173.86	-766.08	11,200.07	0.00	0.00	0.00	
20,500.00	90.00	179.97	8,153.00	-11,273.86	-766.03	11,299.85	0.00	0.00	0.00	
20,600.00	90.00	179.97	8,153.00	-11,373.86	-765.99	11,399.62	0.00	0.00	0.00	
20,655.67	90.00	179.97	8,153.00	-11,429.53	-765.96	11,455.17	0.00	0.00	0.00	
<b>Hold: 90.00° Inc, 179.97° Azm - LTP-REDSTONE 6-65 24-36 2HN</b>										
20,705.67	90.00	179.97	8,153.00	-11,479.53	-765.94	11,505.05	0.00	0.00	0.00	
<b>TD @ 20705.67' MD/8153.00' TVD - BHL-REDSTONE 6-65 24-36 2HN</b>										

Design Targets										
Target Name	Dip Angle (°)	Dip Dir. (°)	TVD (usft)	+N/-S (usft)	+E/-W (usft)	Northing (usft)	Easting (usft)	Latitude	Longitude	
SHL-REDSTONE 6-6: - plan hits target center - Point	0.00	0.00	0.00	0.00	0.00	1,612,079.92	3,248,884.90	39.510619	-104.617860	
KOP-REDSTONE 6-6: - plan hits target center - Point	0.00	0.00	7,580.04	1,170.06	-771.70	1,613,249.98	3,248,113.21	39.513851	-104.620554	
FTP-REDSTONE 6-6: - plan hits target center - Point	0.00	0.00	8,153.00	597.10	-771.44	1,612,677.02	3,248,113.47	39.512279	-104.620573	
LTP-REDSTONE 6-6: - plan hits target center - Point	0.00	0.00	8,153.00	-11,429.53	-765.96	1,600,650.39	3,248,118.94	39.479261	-104.620966	
BHL-REDSTONE 6-6: - plan hits target center - Point	0.00	0.00	8,153.00	-11,479.53	-765.94	1,600,600.39	3,248,118.96	39.479124	-104.620968	



<b>Database:</b>	Local	<b>Local Co-ordinate Reference:</b>	Well REDSTONE 6-65 24-36 2HN
<b>Company:</b>	GMT Exploration Company, LLC	<b>TVD Reference:</b>	KB @ 6298.00usft
<b>Project:</b>	Elbert County, CO (NAD 83)	<b>MD Reference:</b>	KB @ 6298.00usft
<b>Site:</b>	Marble-Redstone Pad	<b>North Reference:</b>	Grid
<b>Well:</b>	REDSTONE 6-65 24-36 2HN	<b>Survey Calculation Method:</b>	Minimum Curvature
<b>Wellbore:</b>	Wellbore #1		
<b>Design:</b>	Design #1		

Formations						
Measured Depth (usft)	Vertical Depth (usft)	Name	Lithology	Dip (°)	Dip Direction (°)	
513.09	513.00	Denver				
1,633.66	1,613.00	Upper Arapahoe				
2,294.43	2,258.00	Laramie - Fox Hills				
2,468.59	2,428.00	Pierre Shale (Base of Fox Hills)				
5,736.57	5,618.00	Sussex Sandstone				
8,135.15	7,953.00	Sharon Springs Shale				
8,190.20	7,993.00	Niobrara				
8,204.82	8,003.00	Niobrara A				
8,413.67	8,113.00	Niobrara B Top				

Plan Annotations					
Measured Depth (usft)	Vertical Depth (usft)	Local Coordinates			
		+N/-S (usft)	+E/-W (usft)	Comment	
350.00	350.00	0.00	0.00	Build: 2°/100' @ 350.00' MD	
977.10	972.11	57.07	-37.64	Hold: 12.54° Inc, 326.59° Azm	
6,801.93	6,657.93	1,112.99	-734.06	Drop: 2°/100' @ 6801.93' MD	
7,429.03	7,280.04	1,170.06	-771.70	Hold: 0.00° Inc, 326.59° Azm	
7,729.03	7,580.04	1,170.06	-771.70	KOP: 10°/100' @ 7729.03' MD	
8,629.03	8,153.00	597.10	-771.44	LP: 8629.03' MD, 90.00° Inc, 179.97° Azm	
20,655.67	8,153.00	-11,429.53	-765.96	Hold: 90.00° Inc, 179.97° Azm	
20,705.67	8,153.00	-11,479.53	-765.94	TD @ 20705.67' MD/8153.00' TVD	