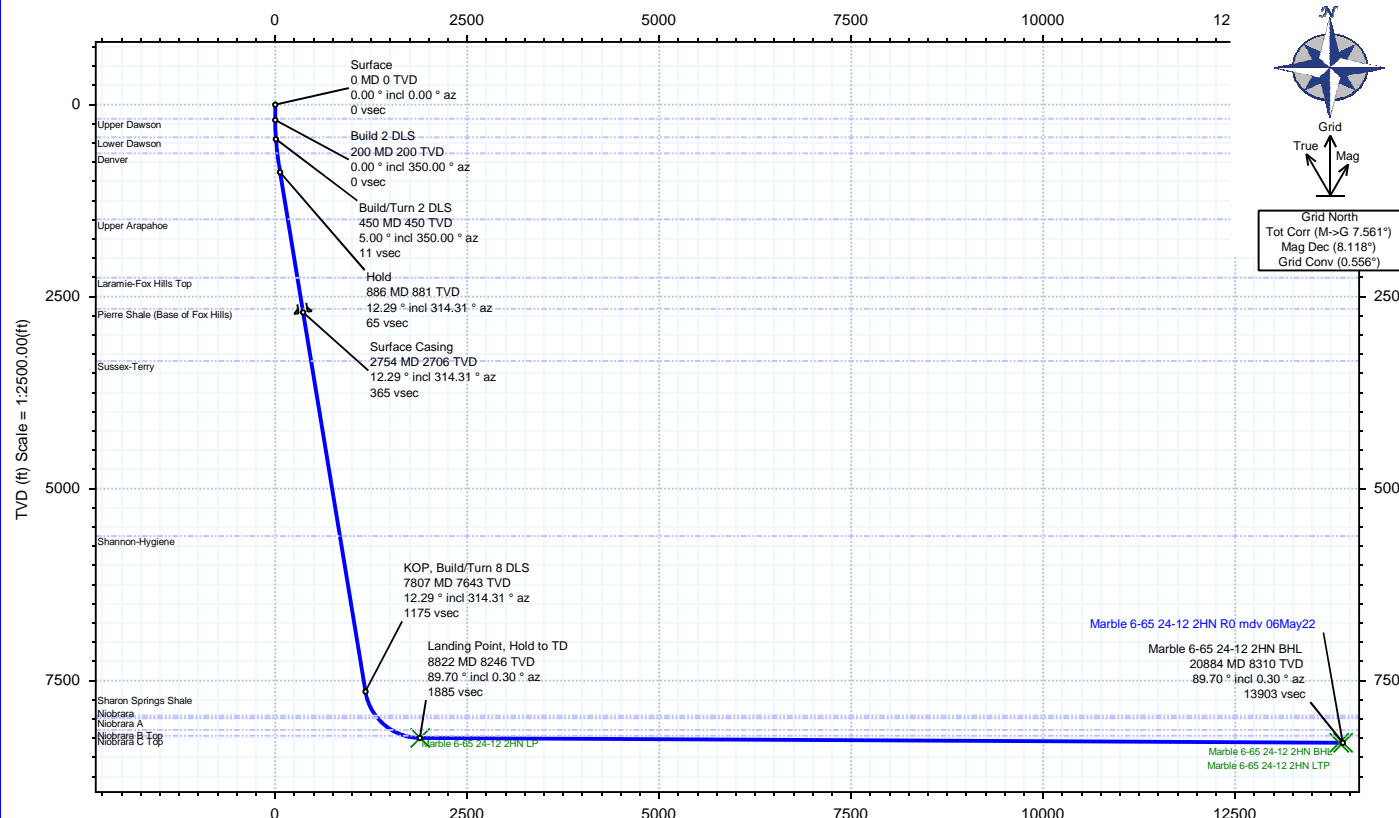


Borehole:	Well:	Field:	Structure:
Marble 6-65 24-12 2HN	Marble 6-65 24-12 2HN	CO, Elbert County (NAD 83 CZ)	GMT Exploration 24-06S-65W (Marble-Redstone Pad)

Gravity & Magnetic Parameters	Surface Location	Miscellaneous
Model: HDGM 2022 Dip: 66.217° Date: 06-May-2022	NAD83 Colorado State Plane, Central Zone, US Feet	Slot: Marble 6-65 24-12 2HN
MagDec: 8.118° FS: 51615.498nT Gravity FS: 998.864mgn (9.80665 Based)	Lat: N 39 30 38.23 Northing: 1612080.05ftUS Grid Conv: 0.5564°	TVD Ref: RKB = 23ft(6301ft above MSL)
	Lon: W 104 37 4.29 Easting: 3248884.99ftUS Scale Fact: 0.99996141	Plan: Marble 6-65 24-12 2HN R0 mdv 06May22

Target Description	Northing: 1612080.046	Easting: 3248884.989	Latitude: N 39 30 38.23	Longitude: W 104 37 4.29	VSec Azimuth: 355.38	Local Coord
Target Name	Latitude	Longitude	Grid Coord	TVD	VSec	N(+)S(-) E(+)W(-)
Marble-Redstone Pad Sec 24-13 - CL	N 39 30 39.12	W 104 37 4.54	1612169.82	3248864.93	6301.00	91.11
Marble-Redstone Pad Sec 24-13-12 - 600' SB	N 39 30 39.12	W 104 37 4.54	1612169.82	3248864.93	6301.00	91.11
Marble-Redstone Pad Sec 24-13-12	N 39 30 39.12	W 104 37 4.54	1612169.82	3248864.93	6301.00	91.11
Marble-Redstone Pad Sec 13-12 - CL	N 39 30 39.12	W 104 37 4.54	1612169.82	3248864.93	6301.00	91.11
Marble Wells - LP Line	N 39 30 39.12	W 104 37 4.54	1612169.82	3248864.93	6301.00	91.11
Marble 6-65 24-12 2HN LP	N 39 30 56.10	W 104 37 19.80	1613875.92	3247652.39	8246.00	1889.44
Marble 6-65 24-12 2HN LTP	N 39 32 54.79	W 104 37 17.53	1625886.92	3247714.27	8310.00	13856.88
Marble 6-65 24-12 2HN BHL	N 39 32 55.29	W 104 37 17.52	1625936.83	3247714.64	8310.00	13906.60

Critical Point	MD	INCL	AZIM	TVD	VSEC	N(+)S(-)	E(+)W(-)	DLS
Surface	0.00	0.00	0.00	0.00	0.00	0.00	0.00	0.00
Upper Dawson	186.00	0.00	0.00	186.00	0.00	0.00	0.00	0.00
Build 2 DLS	200.00	0.00	0.00	200.00	0.00	0.00	0.00	0.00
Lower Dawson	428.24	4.56	350.00	428.00	9.05	8.95	-1.58	2.00
Build/Turn 2 DLS	450.00	5.00	350.00	449.68	10.85	10.74	-1.89	2.00
Denver	637.47	7.78	326.71	636.00	30.13	29.40	-10.28	2.00
Hold	886.04	12.29	314.31	880.73	64.86	61.96	-38.46	2.00
Upper Arapahoe	1512.66	12.29	314.31	1493.00	165.41	155.12	-133.88	0.00
Laramie-Fox Hills Top	2292.53	12.29	314.31	2255.00	290.55	271.07	-252.64	0.00
Pierre Shale (Base of Fox Hills)	2704.98	12.29	314.31	2658.00	356.73	332.39	-315.45	0.00
Surface Casing	2754.10	12.29	314.31	2706.00	364.61	339.69	-322.93	0.00
Sussex-Terry	3400.92	12.29	314.31	3338.00	468.40	435.86	-421.42	0.00
Shannon-Hygiene	5735.40	12.29	314.31	5619.00	843.00	782.93	-776.91	0.00
KOP, Build/Turn 8 DLS	7806.86	12.29	314.31	7643.00	1175.39	1090.90	-1092.35	0.00
Sharon Springs Shale	8150.21	36.91	348.30	7954.00	1307.79	1219.86	-1140.33	8.00
Niobrara	8194.59	39.57	349.41	7991.00	1328.93	1240.74	-1144.44	8.00
Niobrara A	8195.03	40.38	349.72	7989.00	1335.60	1247.33	-1145.65	8.00
Niobrara B Top	8430.45	58.81	354.90	8141.00	1513.79	1424.26	-1168.42	8.00
Niobrara C Top	8616.30	73.46	357.68	8216.00	1683.24	1593.40	-1179.16	8.00
Landing Point, Hold to TD	8821.80	89.70	0.30	8246.00	1885.41	1795.95	-1182.65	8.00
Marble 6-65 24-12 2HN BHL	20883.53	89.70	0.30	8310.00	13902.57	13857.35	-1120.40	0.00



Vertical Section (ft) Azim = 355.38° Scale = 1:2500.00(ft) Origin = 0N/-S, 0E/-W

