

Final Reclamation Inspection

May 11, 2022

Operator: KERR MCGEE OIL & GAS ONSHORE LP #47120

Location ID: 149021

Inspection Document #: 697503939

Weld County, CO

SW Section 34 T3N R66W

Chris Binschus
Reclamation Specialist, COGCC



COLORADO

**Oil & Gas Conservation
Commission**

Department of Natural Resources

Inspection Photos

Location Name: DRILLING FLUID MANAGEMENT

FACILITY #1

Location ID: 149021



Photo 1. Photo taken from the entrance of the DFMF #1 location.



Photo 2. Photo taken from the northwestern DFMF #1 (Pod 1A), facing East. Photo illustrates the establishment of winter wheat. There appears to be better establishment along the perimeter where there was a berm BMP.



COLORADO

Oil & Gas Conservation
Commission

Department of Natural Resources

Inspection Number: 697503939

Inspection Photos
Location Name: DRILLING FLUID MANAGEMENT
FACILITY #1
Location ID: 149021



Photo 3. Photo taken from the southwestern DFMF #1 (Pod 1D), facing East. See comments under Photo 2.



Photo 4. Photo taken from the southwestern DFMF #1 (Pod2D), facing West. See comments under Photo 2.

Inspection Photos
Location Name: DRILLING FLUID MANAGEMENT
FACILITY #1
Location ID: 149021



Photo 5. Photo taken from the southern DFMF #1 (Pod3D), facing South. See comments under Photo 2.



Photo 6. Photo taken from the southern DFMF #1 (Pod 3D), facing Southeast. See comments under Photo 2.

Inspection Photos
Location Name: DRILLING FLUID MANAGEMENT
FACILITY #1
Location ID: 149021



Photo 7. Photo taken from the southern DFMF #1 (Pod3C), facing North. See comments under Photo 2.



Photo 8. Photo taken from the southern DFMF #1 (Pod3C), facing Northeast. See comments under Photo 2.

Inspection Photos
Location Name: DRILLING FLUID MANAGEMENT
FACILITY #1
Location ID: 149021



Photo 9. Photo taken from the central DFMF #1 (Pod2C), facing West. See comments under Photo 2.



Photo 10. Photo taken from the central DFMF #1 (Pod3B), facing East. See comments under Photo 2.

Inspection Photos
Location Name: DRILLING FLUID MANAGEMENT
FACILITY #1
Location ID: 149021



Photo 11. Photo taken from the northcentral DFMF #1 (Pod3A), facing Northeast. See comments under Photo 2.



Photo 12. Photo taken from the northcentral DFMF #1 (Pod2A), facing North. See comments under Photo 2.

Inspection Photos
Location Name: DRILLING FLUID MANAGEMENT
FACILITY #1
Location ID: 149021



Photo 13. Photo taken from the northcentral DFMF #1 (Pod2B), facing West. See comments under Photo 2.



Photo 14. Photo taken from the northwestern DFMF #1 (Pod1B and Pod1A), facing West. See comments under Photo 2.

Inspection Photos

Location Name: DRILLING FLUID MANAGEMENT

FACILITY #1

Location ID: 149021



Photo 15. Photo taken from the northwestern DFMF #1 (Pod2B left of red-dashed line and Pod1B right of line), facing South. See comments under Photo 2.



Photo 16. Photo taken from the northwestern DFMF #1 (Pod2A), facing North. See comments under Photo 2.

Inspection Photos

Location Name: DRILLING FLUID MANAGEMENT FACILITY #1

Location ID: 149021

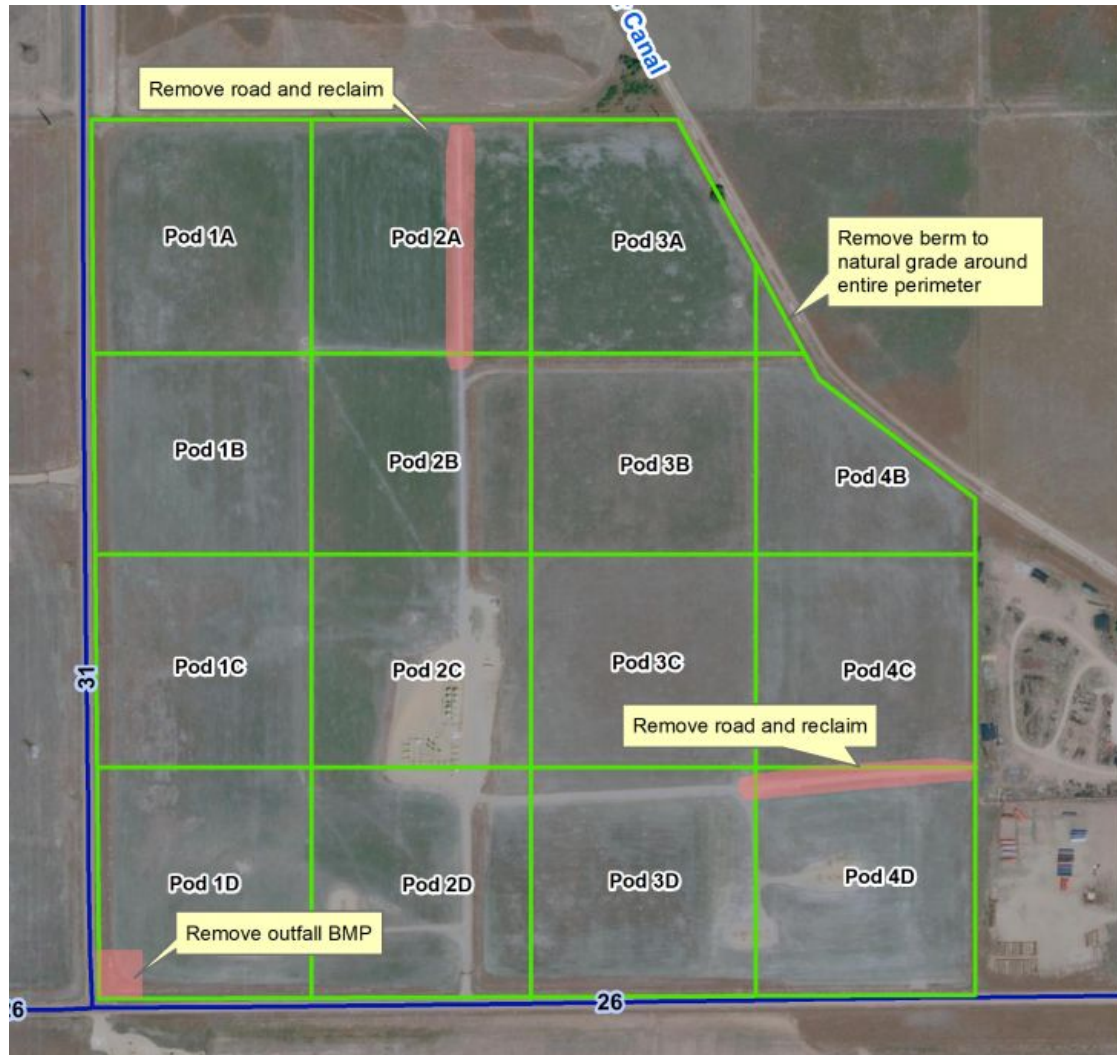


Photo 17. Figure taken from a Form 4 Sundry attachment illustrating the planned reclamation work and Pods.