



GAMMA RAY, CCL
CEMENT BOND
VDL

Company	Patina Oil and Gas Corporation						
Well	Abbey D 1-8J1						
Field	Wattenberg						
County	Weld						
State	Colo.						
Location: 1791' FNL & 658' FEL SE / NE							
SEC 1	TWP 3N RGE 64W						
Permanent Datum	GL	Elevation	4767'				
Log Measured From	KB	KB	4763'				
Drilling Measured From	KB	GL	4767'				
Date	April 23, 2004						
Run Number	one						
Depth Diller	7482'						
Depth Logger	7431'						
Bottom Logged Interval	7428'-8170'						
Top Log Interval	4750'-3800'						
Open Hole Size	water						
Type Fluid							
Viscosity							
Max Recorded Temp.	242 deg F						
Estimated Cement Top	3104 6284'						
Time Well Ready							
Time Logger on Bottom							
Attachment Number	12 TEK2717AN/TEKCOL						
Location	WCRA40-WCR57 53m NE 1 E 8 10 N 3 10 W 10m						
Recorded By	R L Melsner						
Witnessed By	Scott Mahaffey						
Borehole Record							
Run Number	Bit	From	To	Size	Weight	From	To
Tubing Record							
Running Record	Size	Wgt/Ft	Top	Bottom			
Surface String							
Production String	4.5"						
Well							

<<< Fold Here >>>

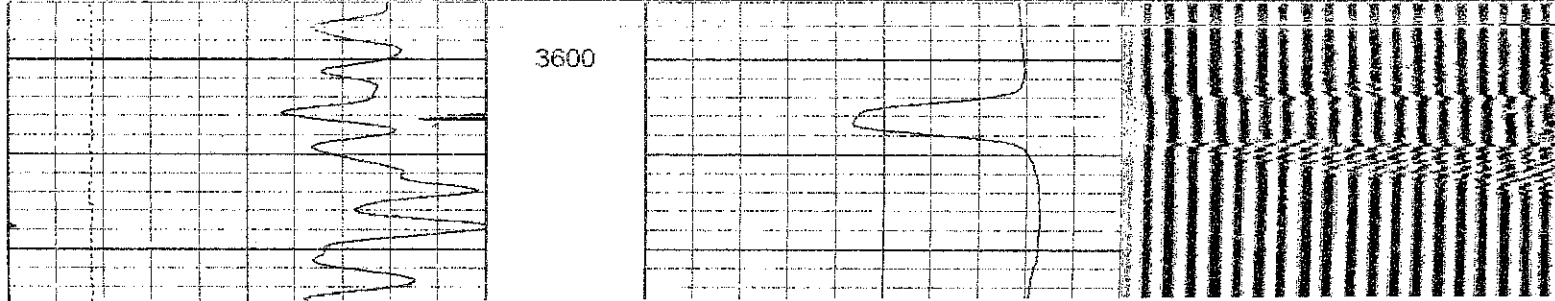
All interpretations are opinions based on inferences from electrical or other measurements and we cannot and do not guarantee the accuracy or correctness of any interpretation, and we shall not, except in the case of gross or wilful negligence on our part, be liable or responsible for any loss, costs, damages, or expenses incurred or sustained by anyone resulting from any interpretation made by any of our officers, agents or employees. These interpretations are also subject to our general terms and conditions set out in our current Price Schedule.

Comments

THANK-YOU FOR USING "NUEX" WIRELINE SERVICES INC. !!!
970.526.1084 FAX:970.526.1085

Database File:	pogad8ji.db
Dataset Pathname:	pass2
Presentation Format:	bond
Dataset Creation:	Fri Apr 23 06:07:49 2004 by Log 6.2_B4
Charted by:	Depth in Feet scaled 1:240

9	CCL	0	0	Amplitude (Pipe Bond) (mV)	100	300	VDL (Formation Bond)	120
30	Gamma Ray (GAPI)	130	0	Amplified Amplitude (mV)	10			
30	Line Speed (ft/min)	230						

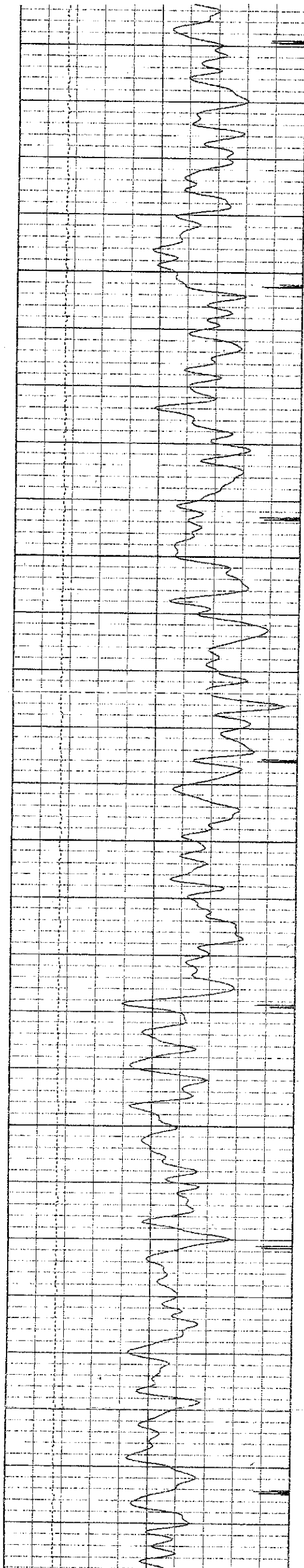


3600

3700

3800

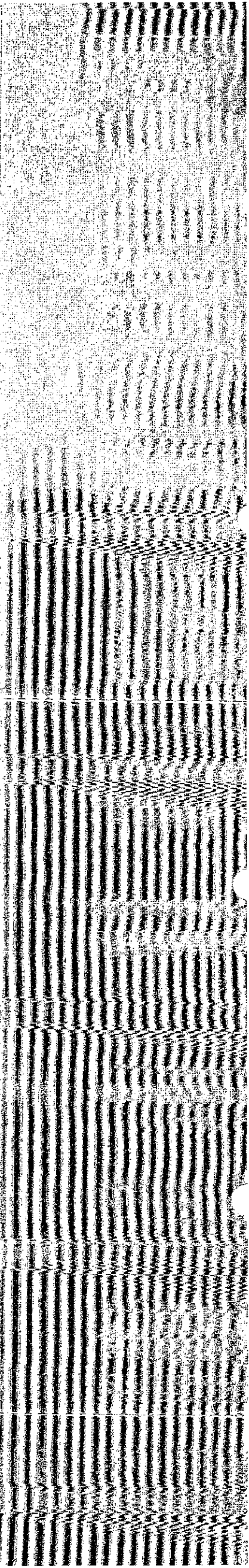
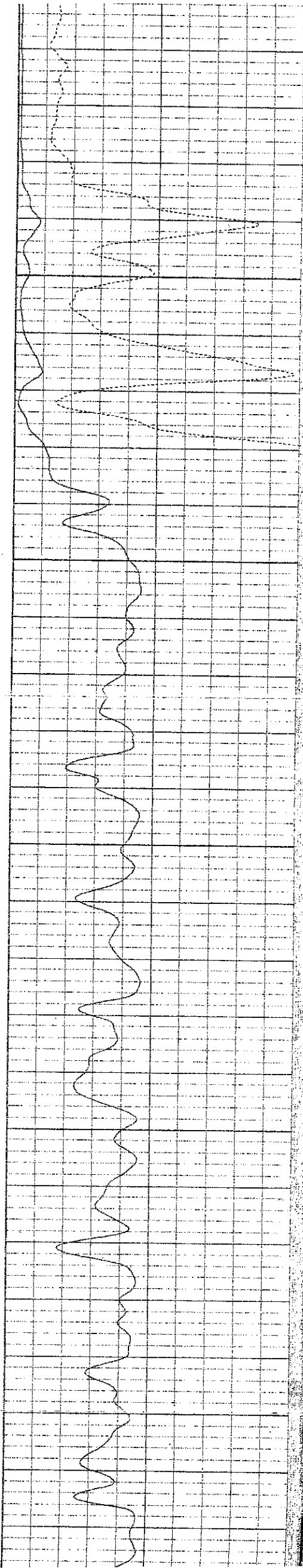
Probable Top of Cement

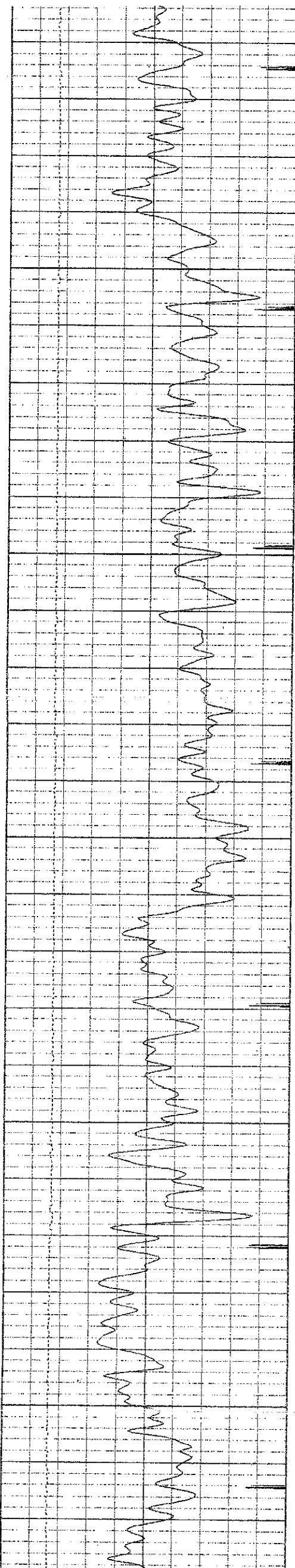


3900

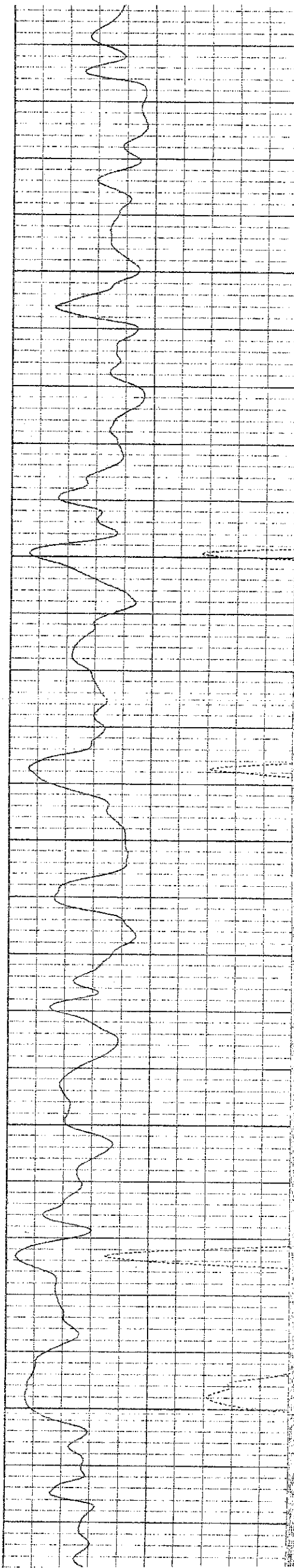
4000

4100

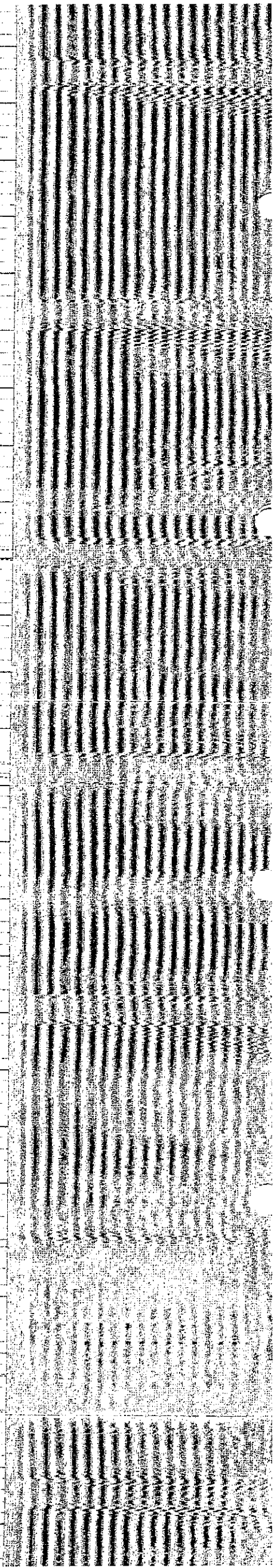


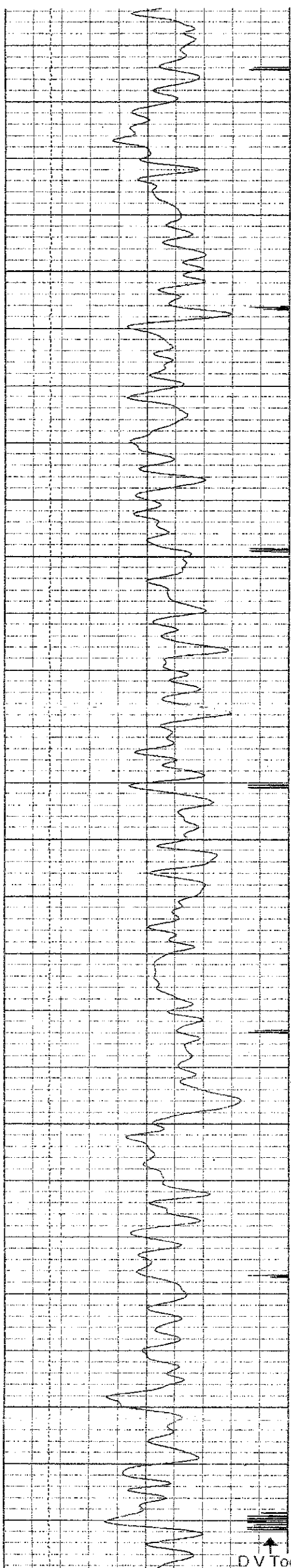


4200



4300

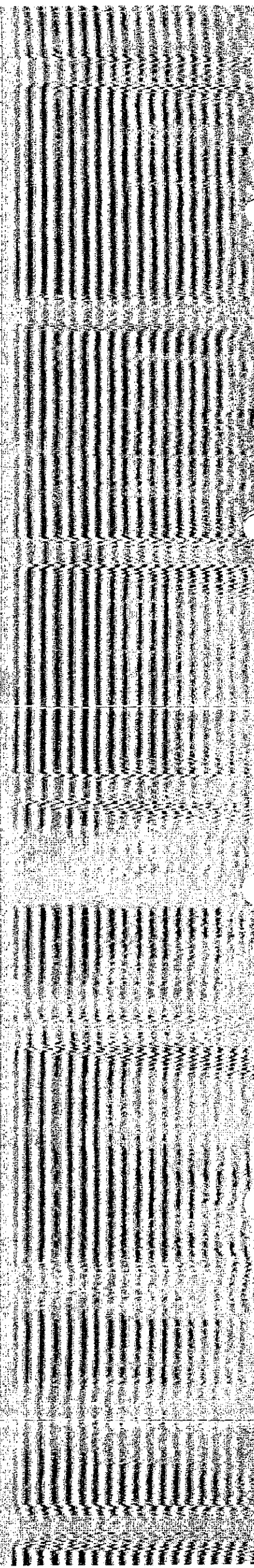
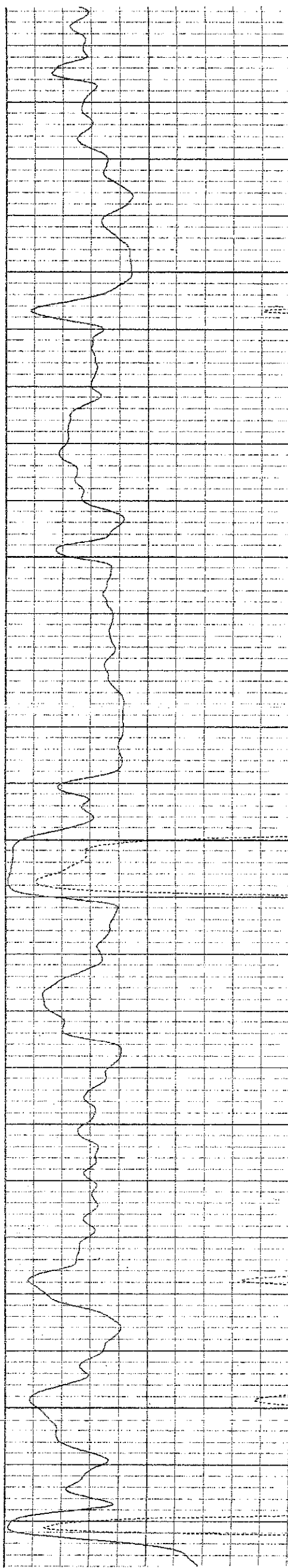


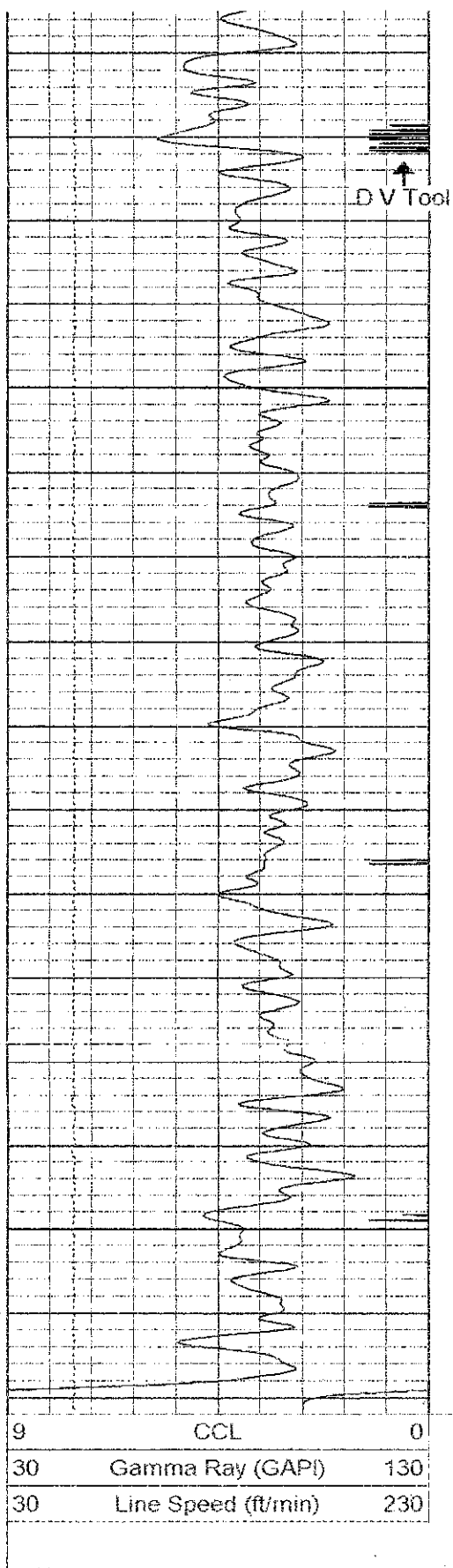


4400

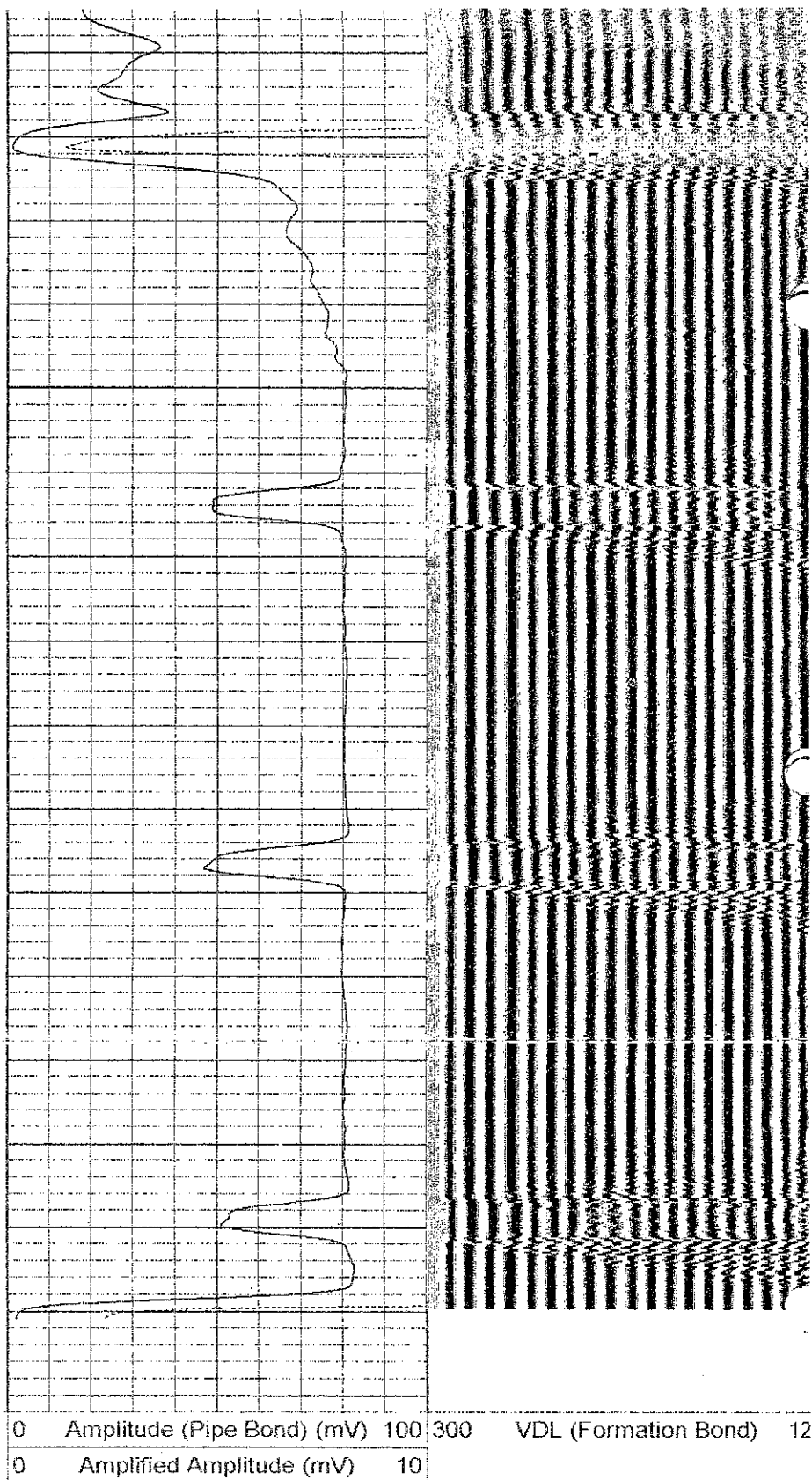
4500

4600





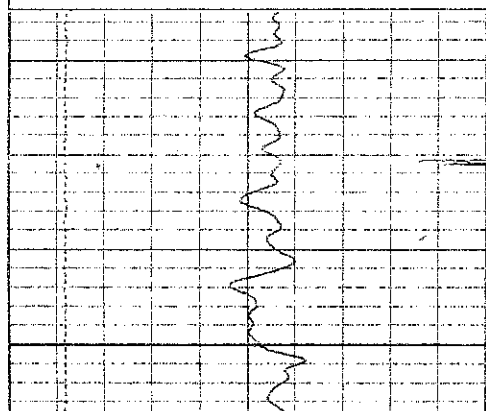
4700



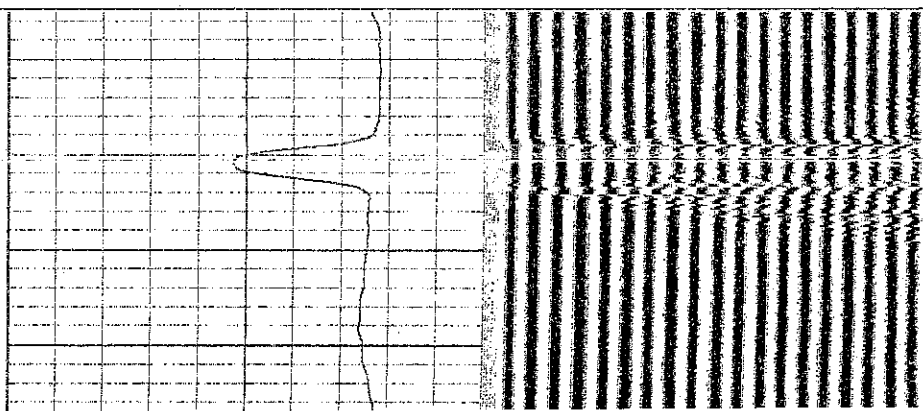
Database File: pogad8ji.db
Dataset Pathname: pass1.1
Presentation Format: bond
Dataset Creation: Fri Apr 23 07:05:31 2004 by Calc 6.2_B4
Charted by: Depth in Feet scaled 1:240

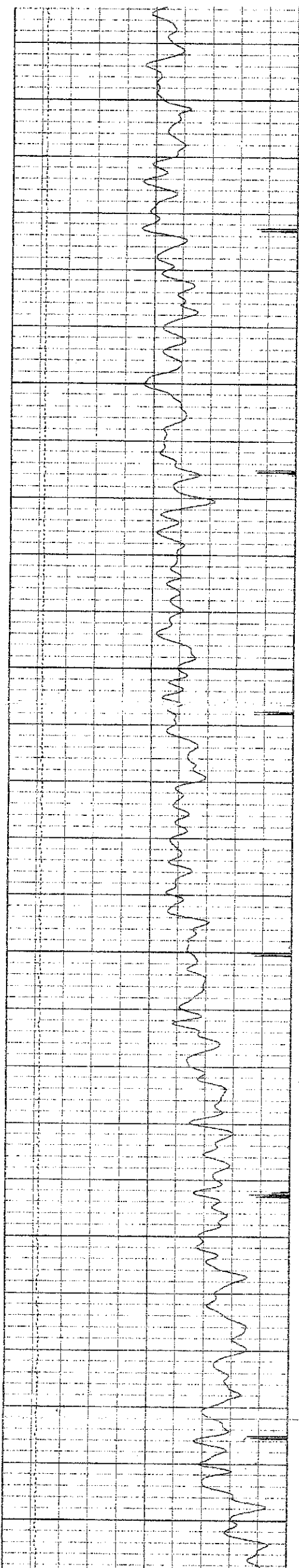
9	CCL	0
0	Gamma Ray (GAPI)	160
30	Line Speed (ft/min)	230

0	Amplitude (Pipe Bond) (mV)	100	300	VDL (Formation Bond)	12
0	Amplified Amplitude (mV)	10			



6200

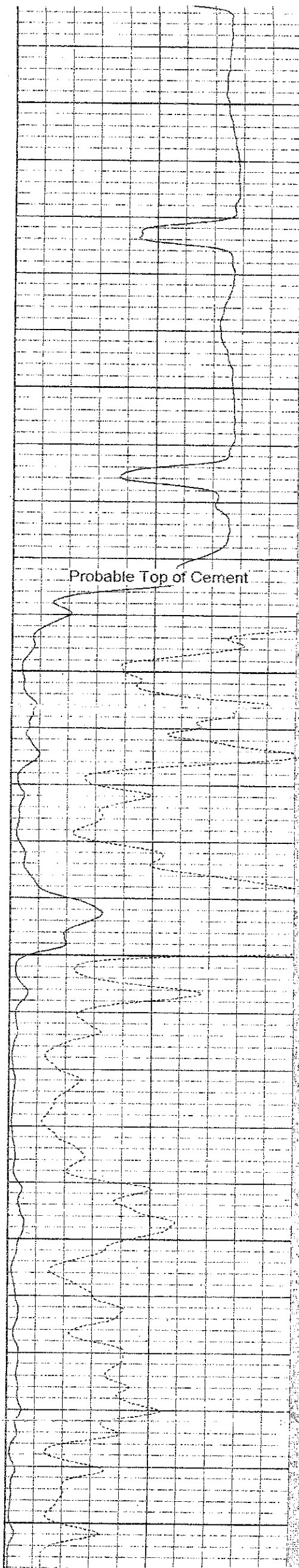




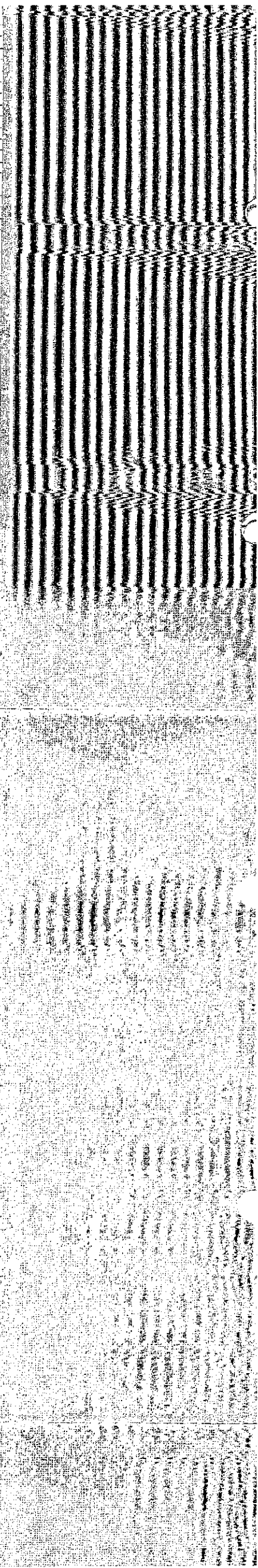
6200

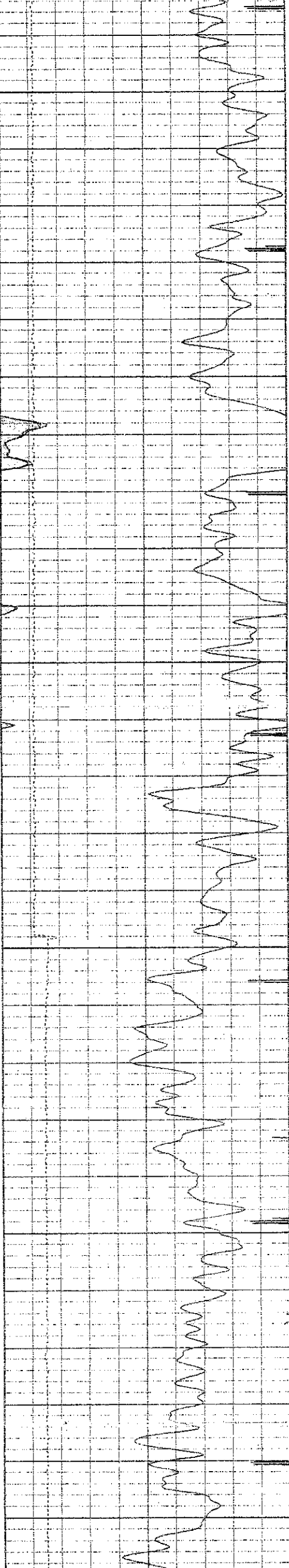
6300

6400



Probable Top of Cement





6500

6566

6578

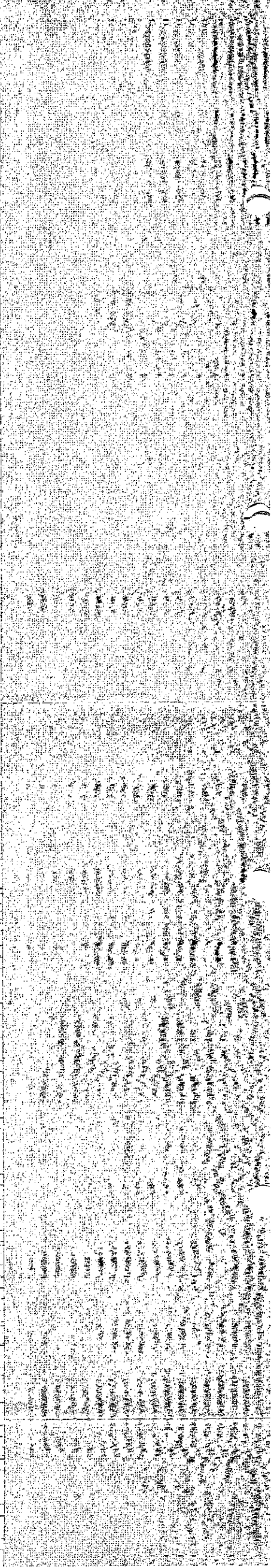
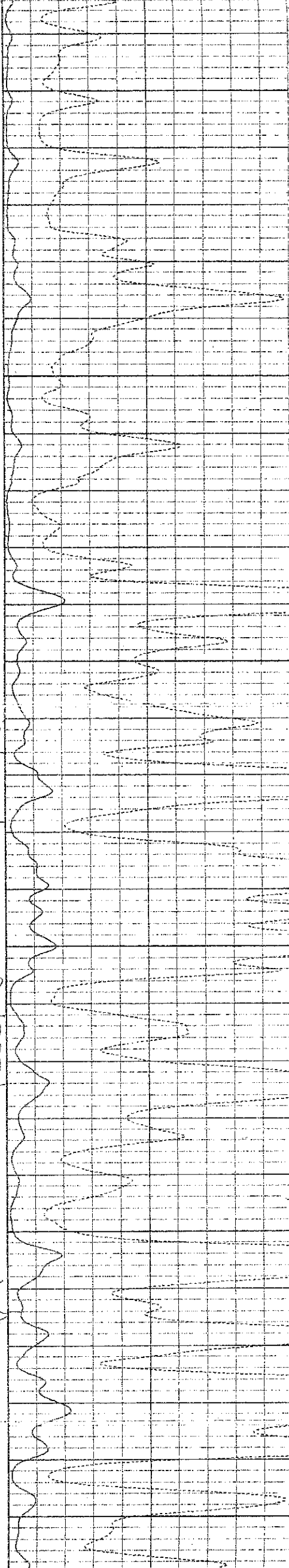
6600

6612

6624

Plug
6664

6700

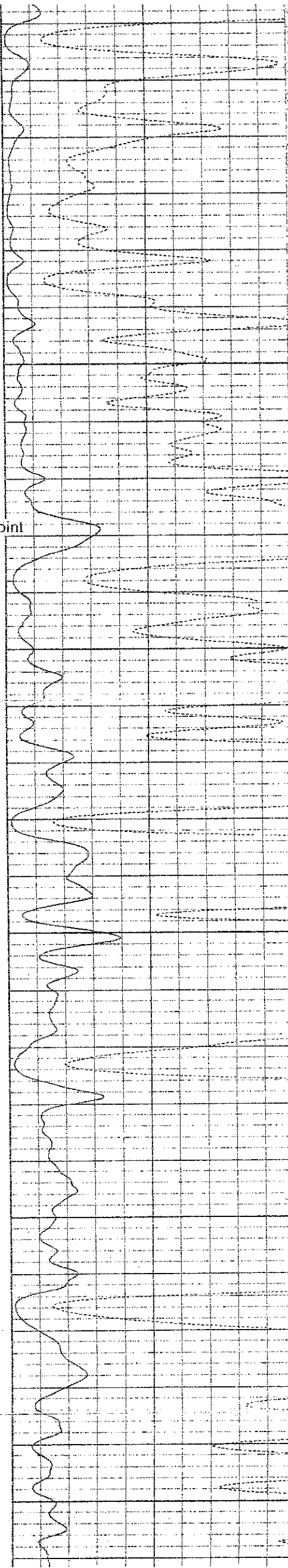
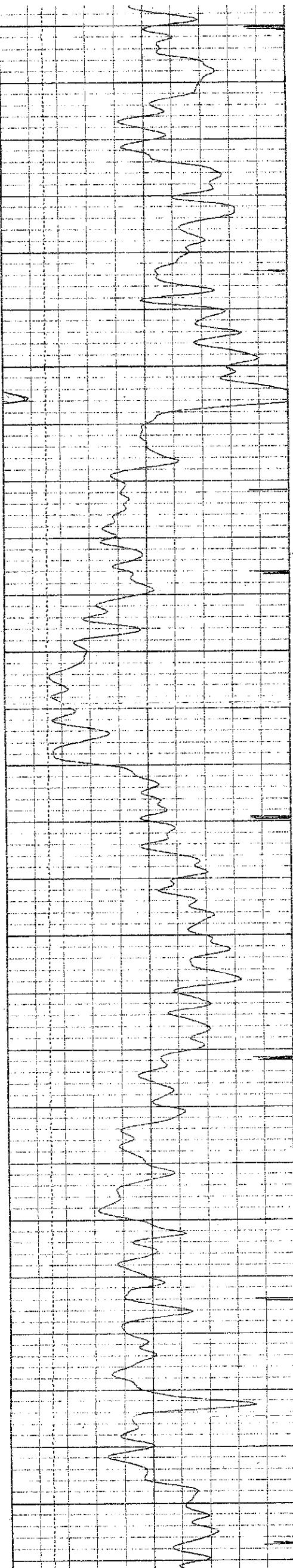


6700

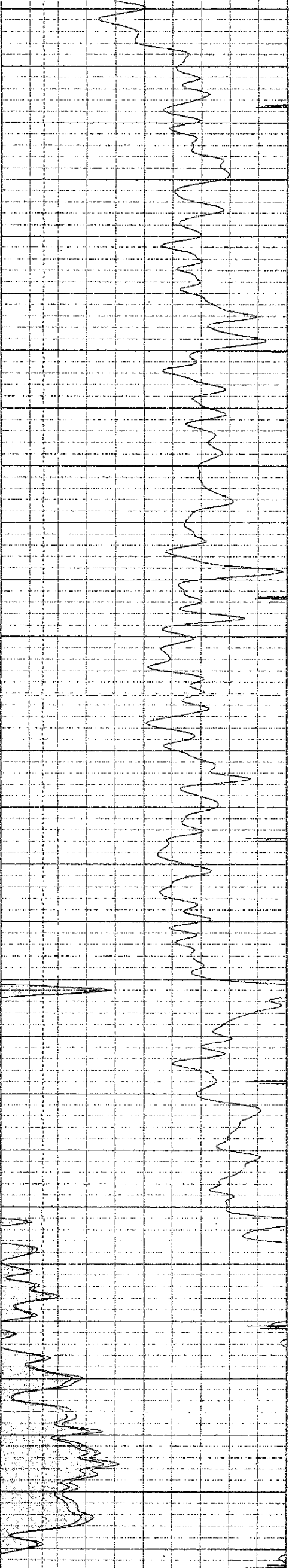
6800

6900

← Flag Joint



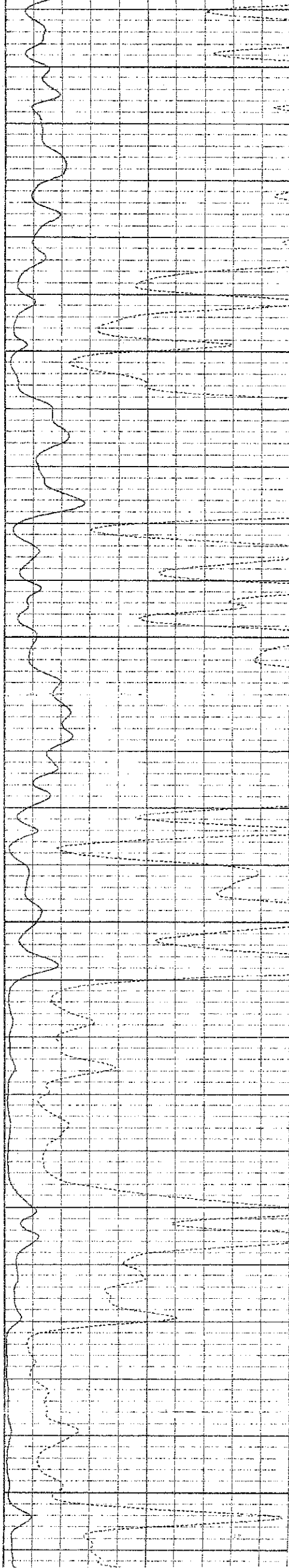
Geological description of the seismic data, including details about the Flag Joint and the surrounding rock formations. The text is oriented vertically along the right side of the page.



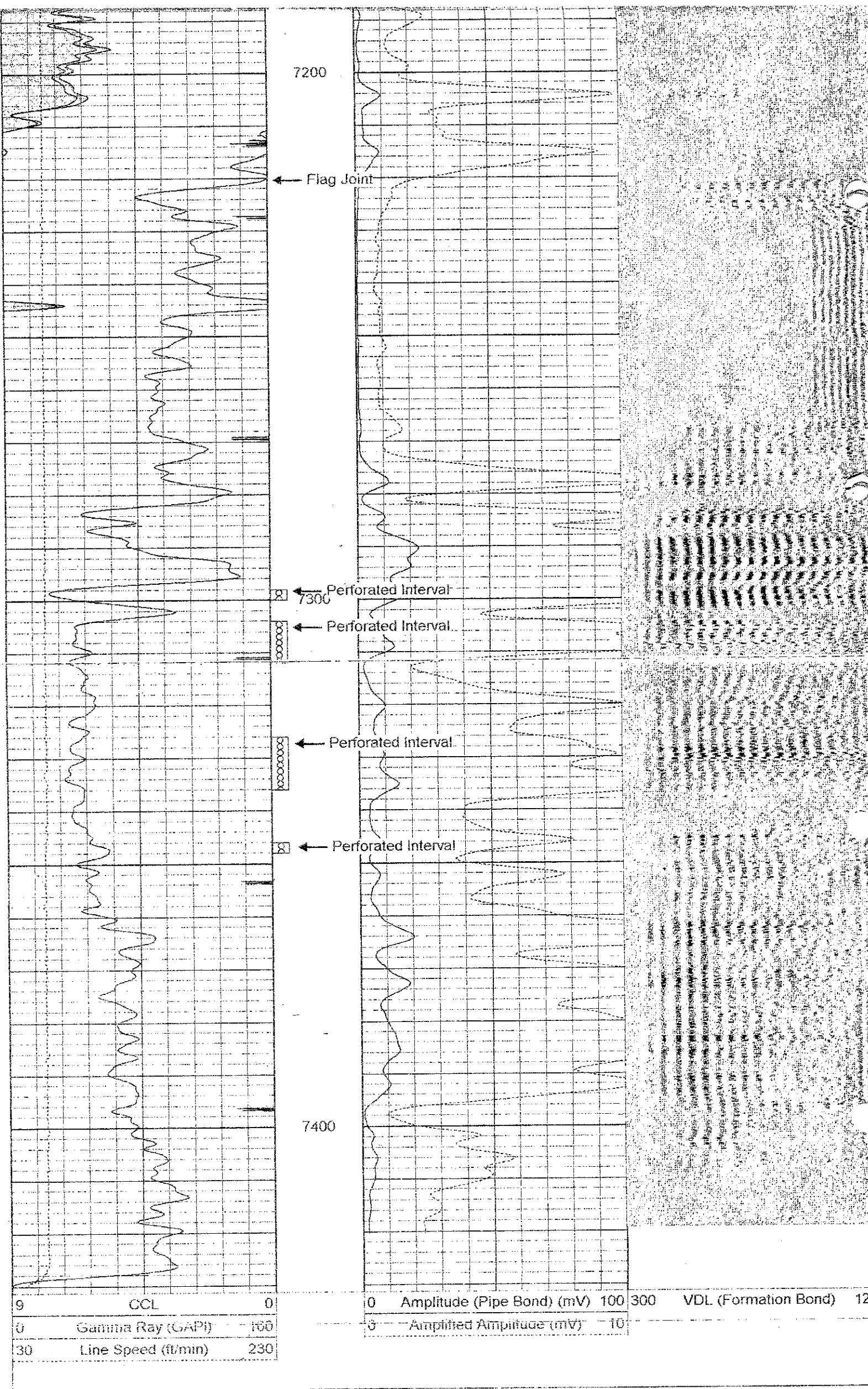
7000

7100

7200



Handwritten notes and signatures on the right side of the page, including a large signature at the top and several lines of text below it.



7200

Flag Joint

Perforated Interval

Perforated Interval

Perforated Interval

Perforated Interval

7400

9 CCL 0
0 Gamma Ray (GAPI) 100
30 Line Speed (ft/min) 230

0 Amplitude (Pipe Bond) (mV) 100 300 VDL (Formation Bond) 12
0 Amplitude (Formation Bond) (mV) 10