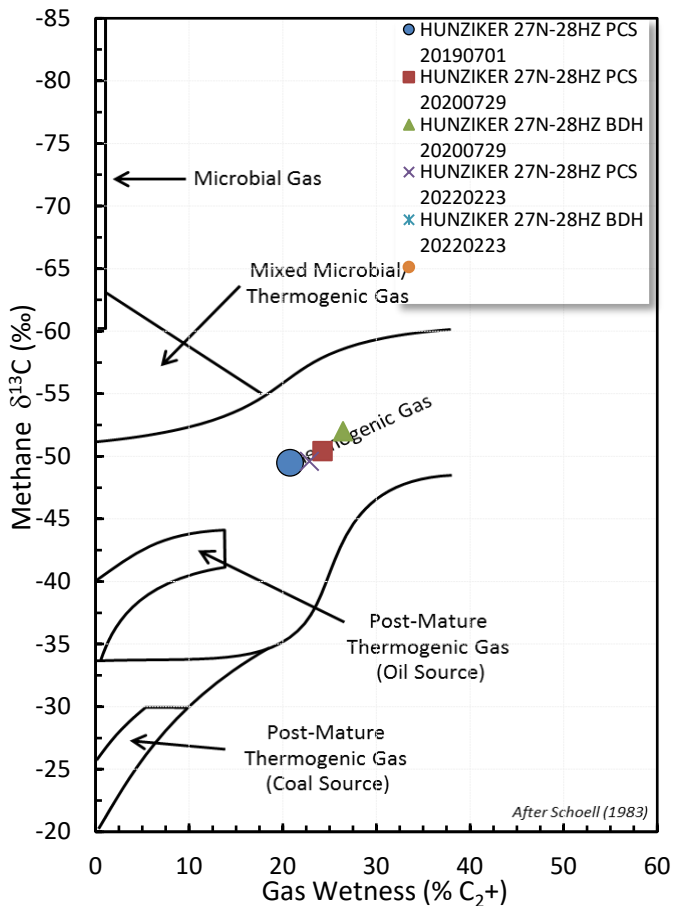
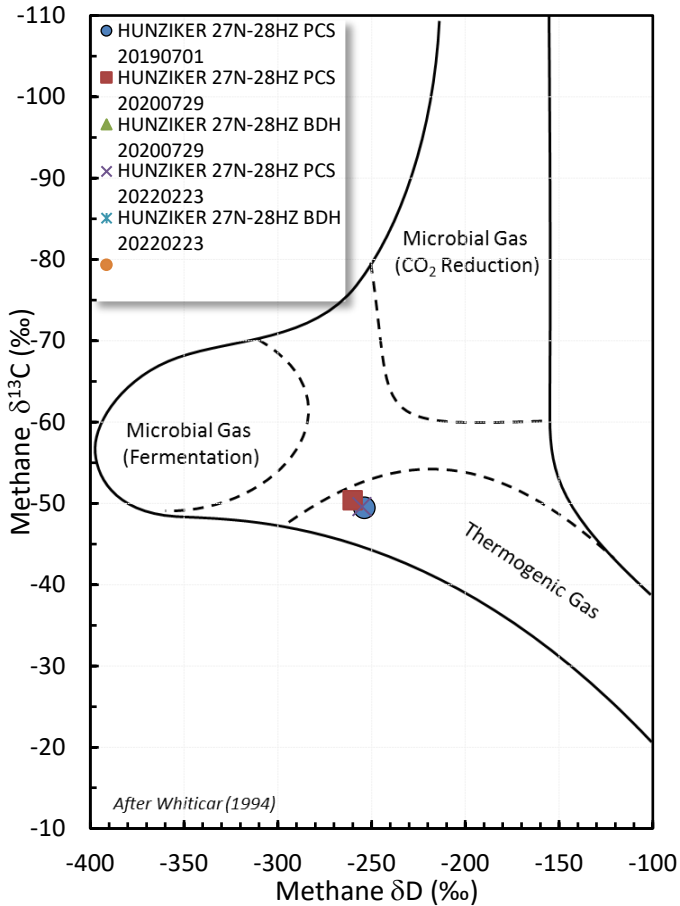


Stable Isotope Interpretive Plots

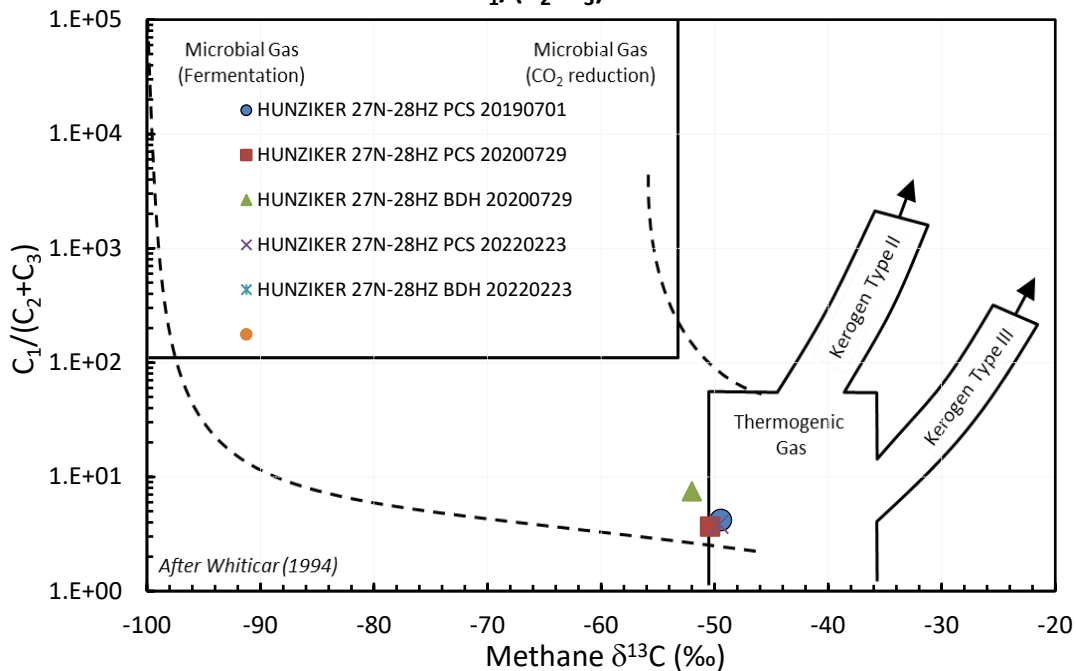
Methane vs Gas Wetness Genetic Classification



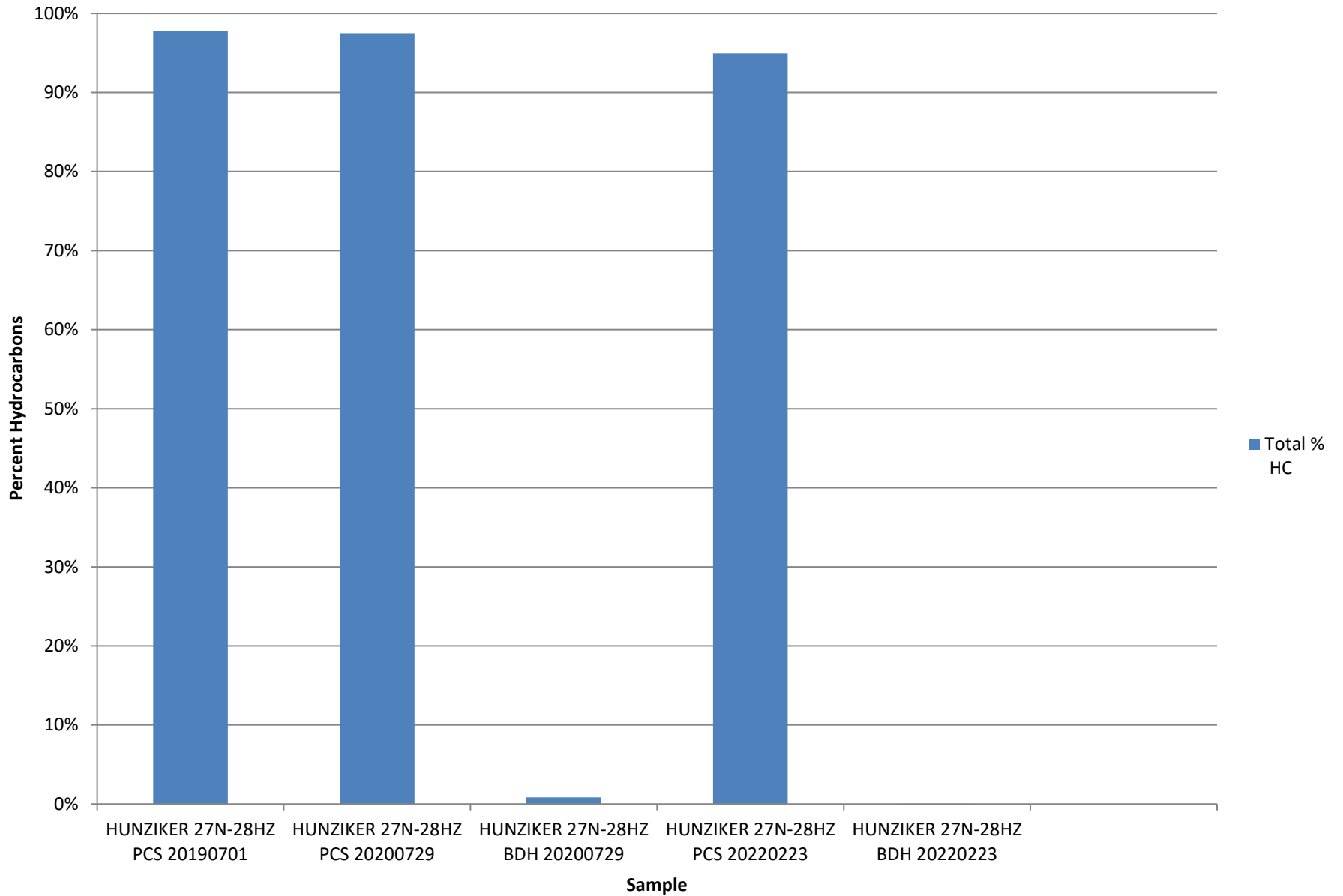
Methane $\delta^{13}\text{C}$ vs δD Genetic Classification Plot



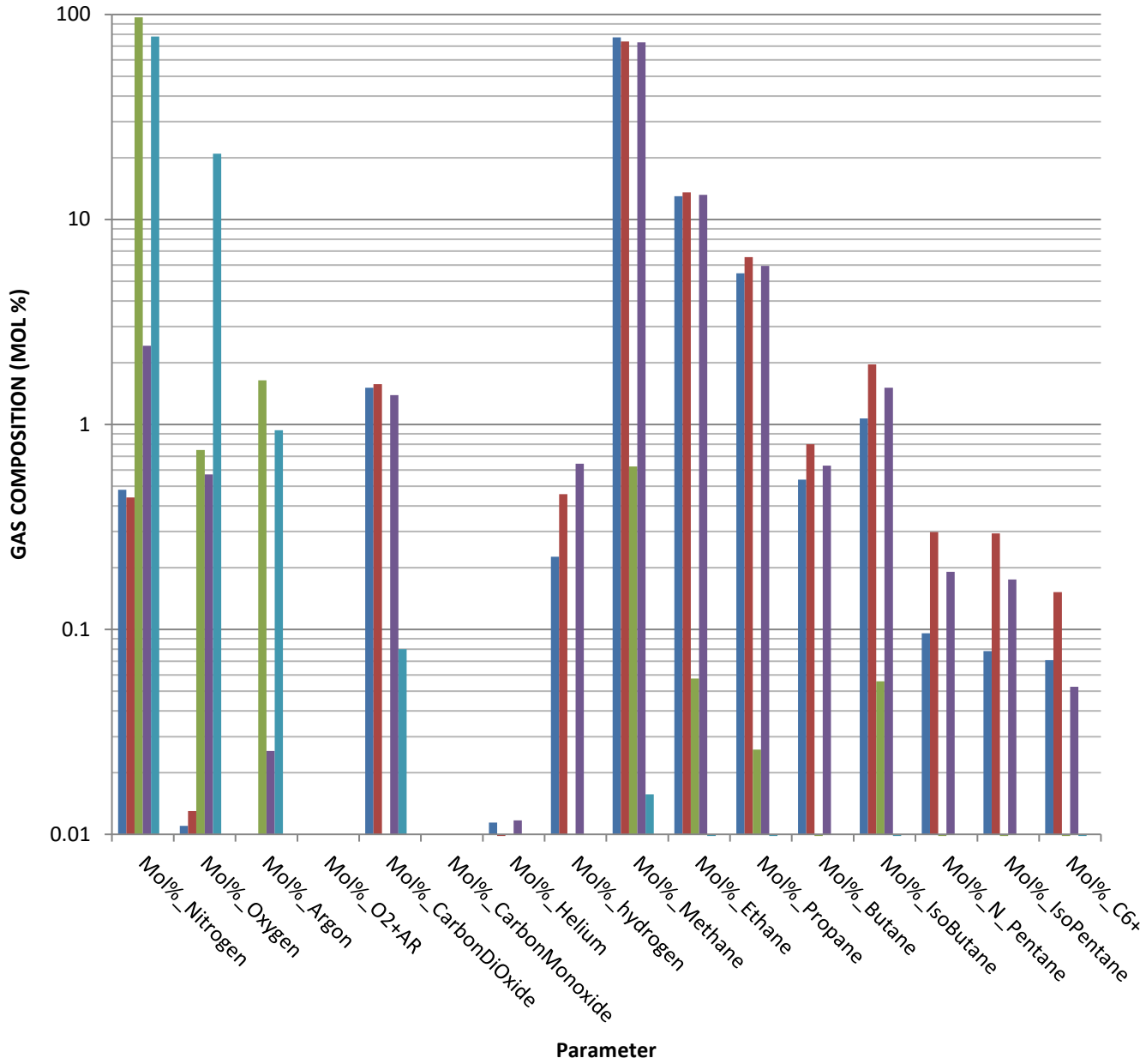
Methane $\delta^{13}\text{C}$ vs $\text{C}_1/(\text{C}_2+\text{C}_3)$ Genetic Classification Plot



Total Percent Hydrocarbons

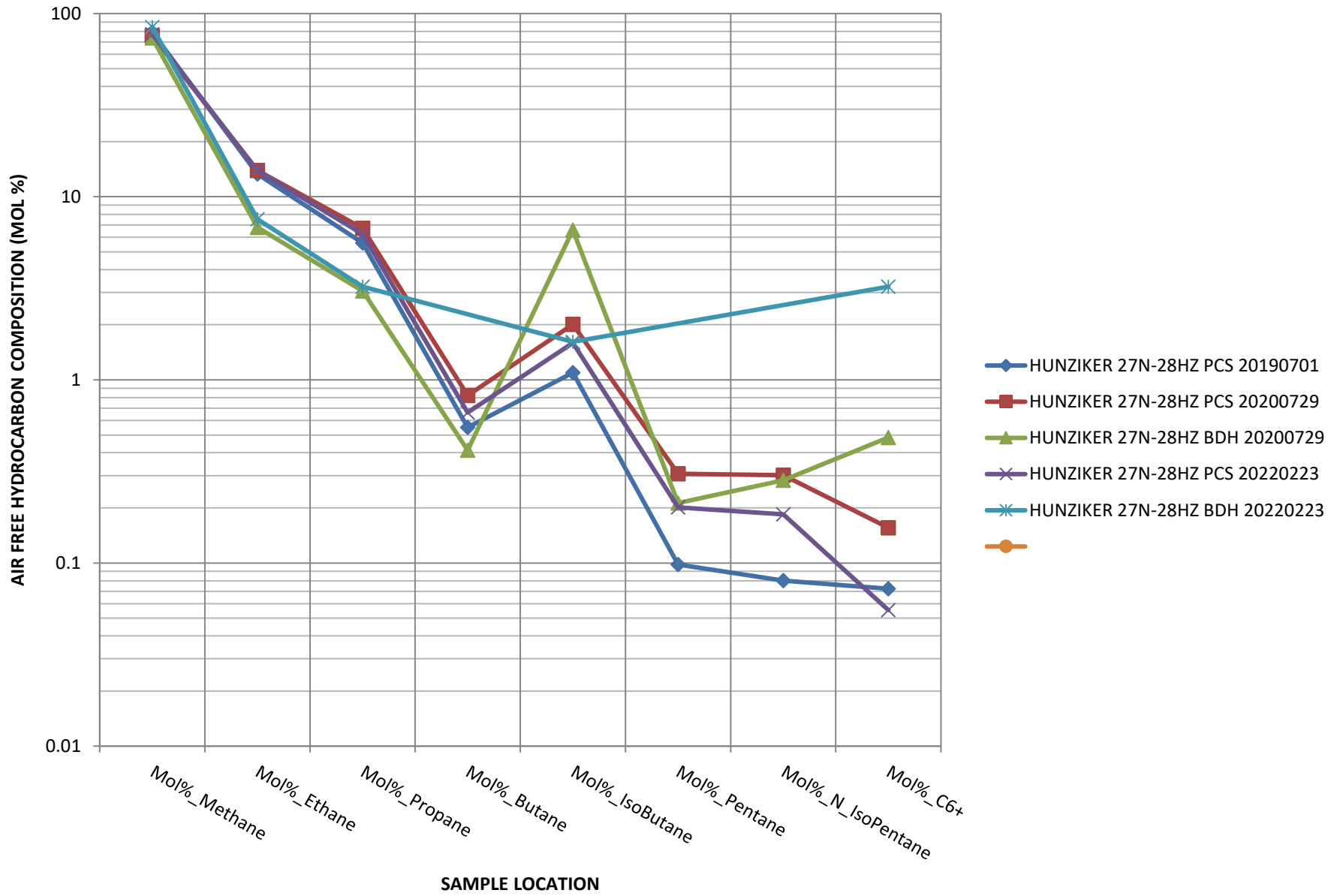


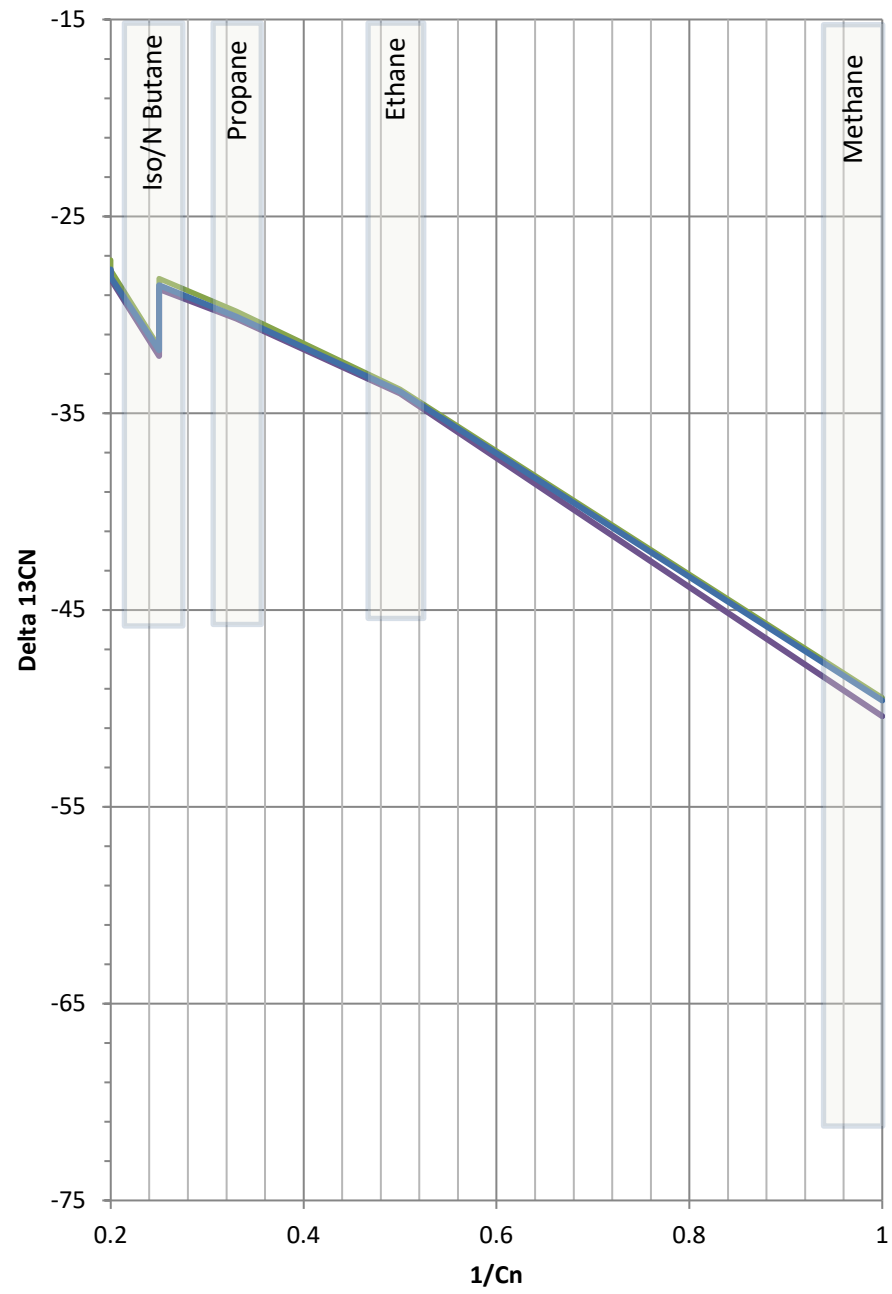
GAS COMPOSITION



- HUNZIKER 27N-28HZ PCS 20190701
- HUNZIKER 27N-28HZ PCS 20200729
- HUNZIKER 27N-28HZ BDH 20200729
- HUNZIKER 27N-28HZ PCS 20220223
- HUNZIKER 27N-28HZ BDH 20220223

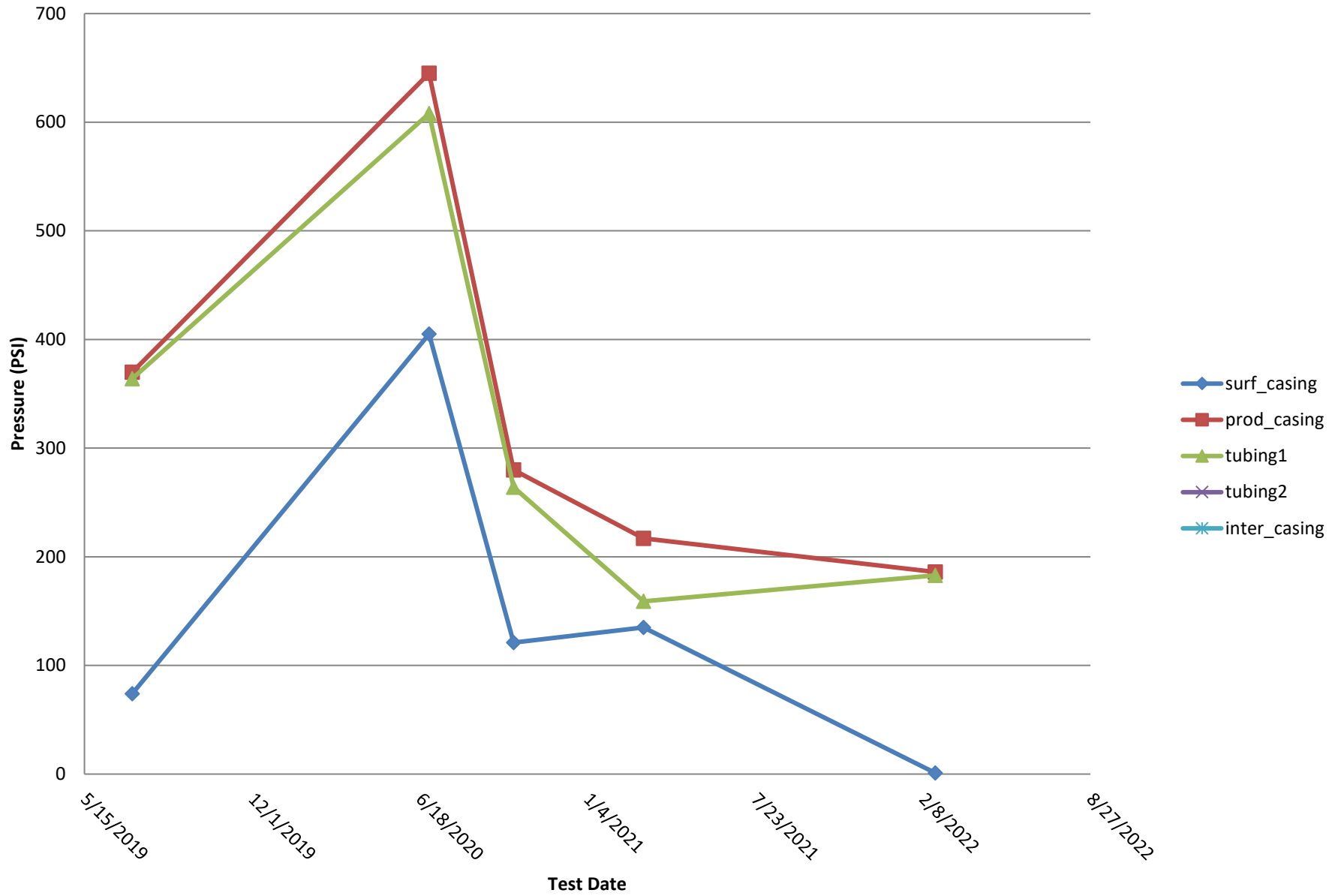
HYDROCARBON COMPOSITION



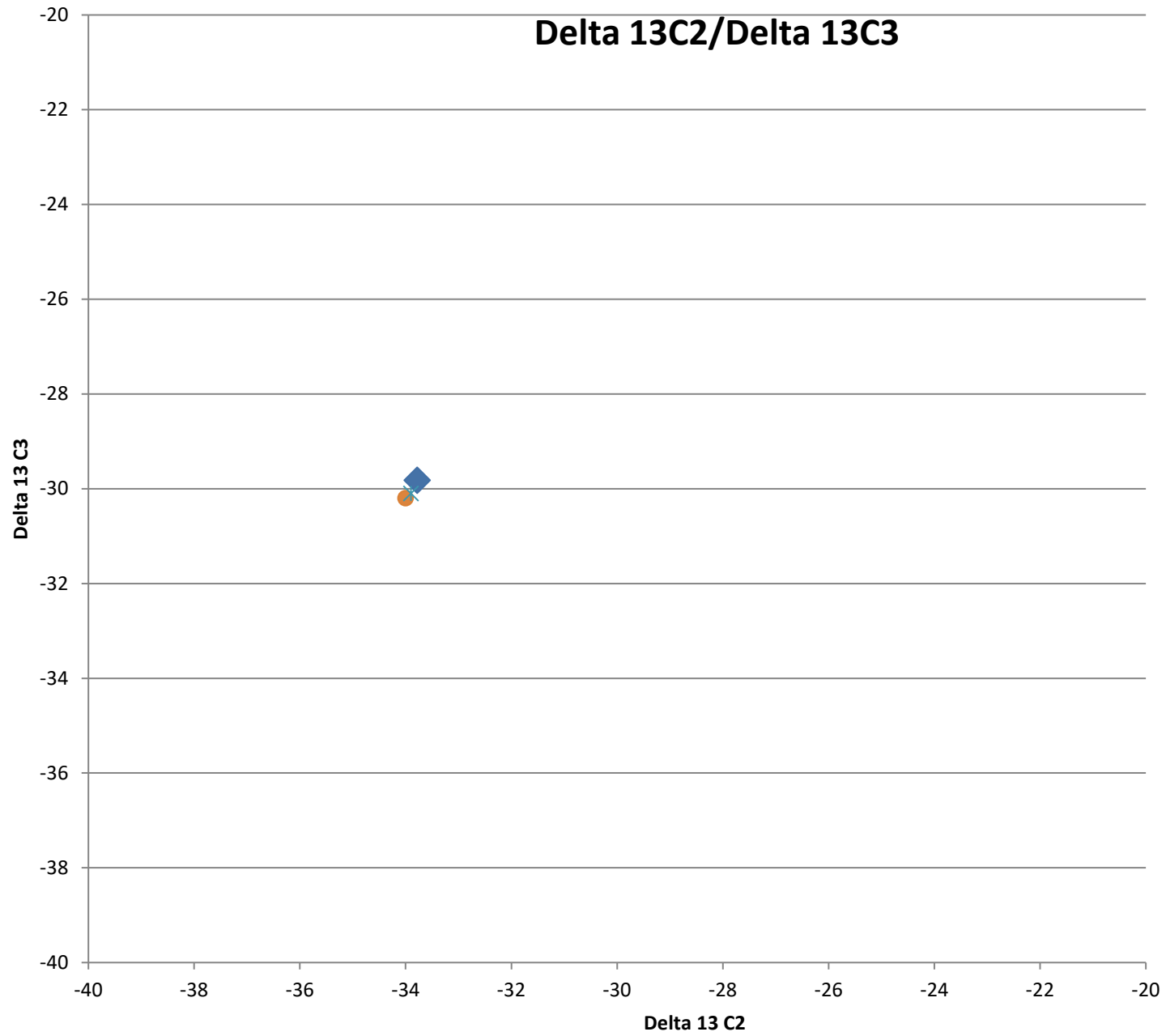


- HUNZIKER 27N-28HZ PCS
- HUNZIKER 27N-28HZ PCS
- HUNZIKER 27N-28HZ PCS
-
-
-

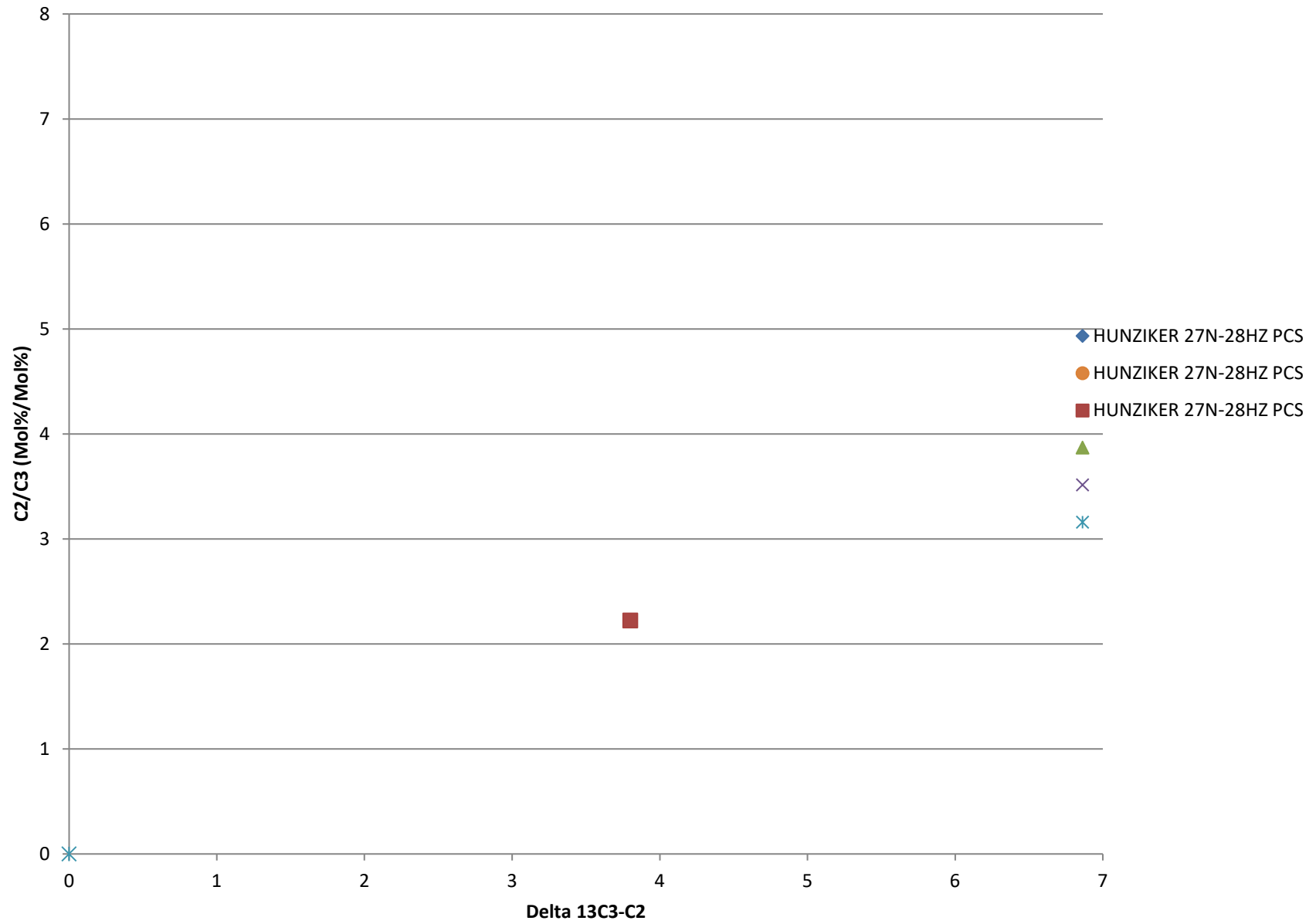
Bradenhead Test Summary



Delta 13C2/Delta 13C3



Delta13 C2/C3 vs. Delta 13C3-C2



Delta 13 IC4/ Delta NC4

