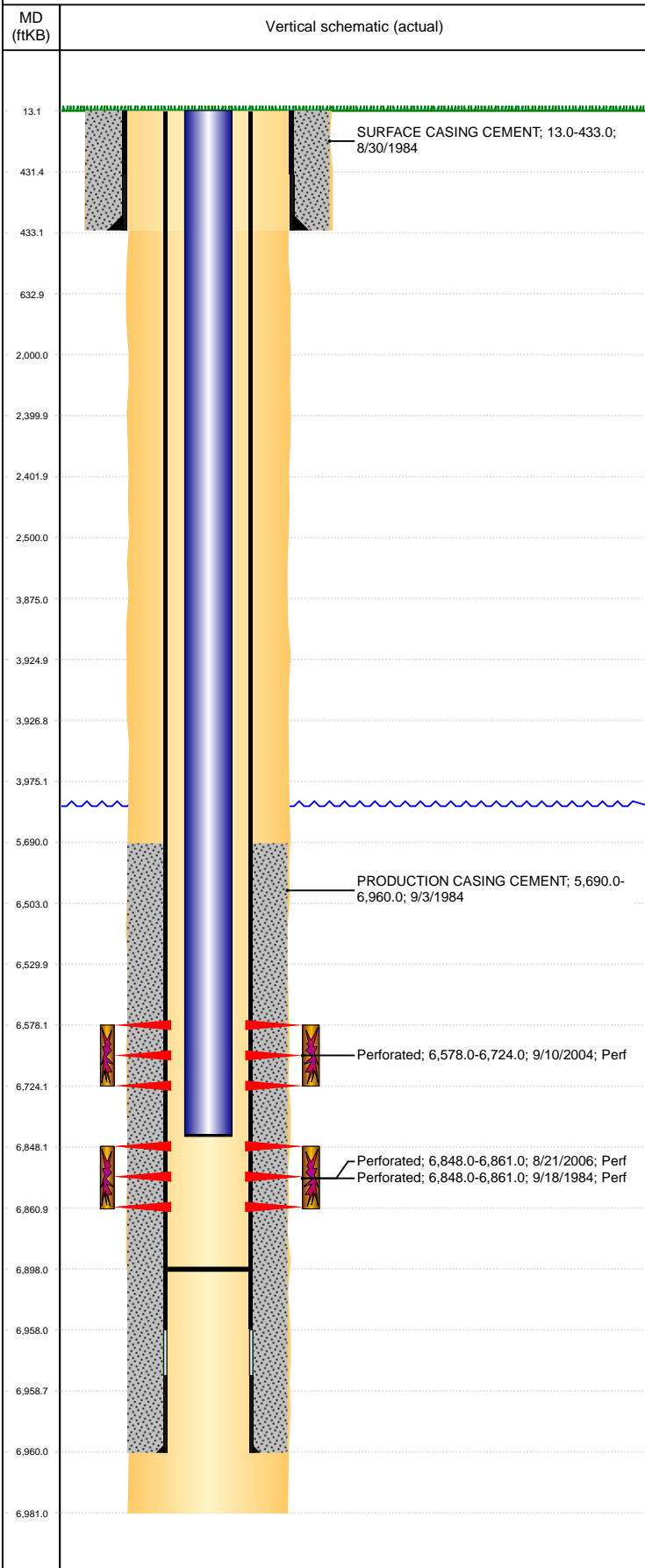


Well Name: NIX 01

VERTICAL, ORIGINAL HOLE, 5/16/2022 1:20:36 PM



Well Header									
API 05-123-11926		Business Unit DJ BASIN		District 15		Well Config VERTICAL			
KB - GL / MSL (ft... 13.00		Spud Date 8/30/1984		P & A Date		Well Production Status PR		SoRT No	
Comment MISSING ORIGINAL FRAC INFO, USED INFO FROM STATE RPTS AND SCHEMATIC AS WELL AS A SUNDRY NOTICE. DISCREPANCIES: DR RPT TD 6893/7055/6981'; ST RPT TD 7064; LOG TD 6981'. DR RPT PROD CSG @ 6960' ST RPT PROD CSG @ 7055'									
Surface Location (Congressional)									
Qtr 3 NE	Qtr 4 NE	Section 28	Twonshp 4	Twonsh... N	Range 64	Rng E... W	Actual Latitude (°) 40.28849316	Actual Longitude (°) -104.54891299	
Wellbore Sections									
Section Des		Size (in)		Act Top, MD (ftKB)		Act Btm, MD (ftKB)			
SURFACE PRODUCTION		12 1/4 7 7/8		13 433		433 6,981			
Casing Strings									
Csg Des		Run Date	OD (in)	Wt/Len (lb/ft)	Grade	Top, MD (ftKB)	MD (ftKB)		
Surface		8/30/1984	8 5/8	24.00		13.0	433.0		
Production		9/4/1984	4 1/2	10.50		13.0	6,960.0		
Cement									
Des		Start Date	Top (ftKB)	Btm (ftKB)					
SURFACE CASING CEMENT		8/30/1984	13.0	433.0					
PRODUCTION CASING CEMENT		9/3/1984	5,690.0	6,960.0					
Zone Statuses									
Zone Name	Status Date	Status	Fluid Type	Job			Prod Method		
CODELL	10/9/1984	PR		DRILLING/COMPLETION - ORIGINAL, 8/30/1984...			Flowing		
CODELL	10/2/2006	PR		RE-FRAC, 9/25/2006 00:00			Flowing		
NIOBRARA	9/11/2004	PR		RECOMPLETION, 9/10/2004 00:00			Flowing		
Perforation Data									
Linked Zone		Bnch/Stg	Entered Shot Total	Top (ftKB)	Btm (ftKB)	Date			
NIOBRARA, ORIGINAL HOLE			192	6,578.00	6,724.00	9/10/2004			
CODELL, ORIGINAL HOLE			52	6,848.00	6,861.00	8/21/2006			
CODELL, ORIGINAL HOLE			14	6,848.00	6,861.00	9/18/1984			
Stimulation Intervals									
Zone		Start Date	Top (ftKB)	Btm (ftKB)					
NIOBRARA, ORIGINAL HOLE		9/10/2004	6,578.0	6,724.0					
CODELL, ORIGINAL HOLE		9/18/1984	6,848.0	6,861.0					
CODELL, ORIGINAL HOLE		9/25/2006	6,848.0	6,861.0					
Other In Hole									
Run Date	Des		Make	OD (in)	Top (ftKB)	Btm (ftKB)			
Logs									
Date	Type				Top, MD (ftKB)	Btm, MD (ftKB)			
9/3/1984	COMPENSATED DENSITY				6,500.0	6,979.0			
9/3/1984	INDUCTION				433.0	6,979.0			
9/11/1984	CEMENT BOND				5,600.0	6,941.0			
6/10/2020	GYRO				100.0	6,800.0			
Plug Back Total Depths									
Date	Type	Com			Depth (ftKB)				
8/18/2006	FILL	CLEAN OUT TO 6940'			6,940.0				
9/28/2009	FILL				6,898.0				