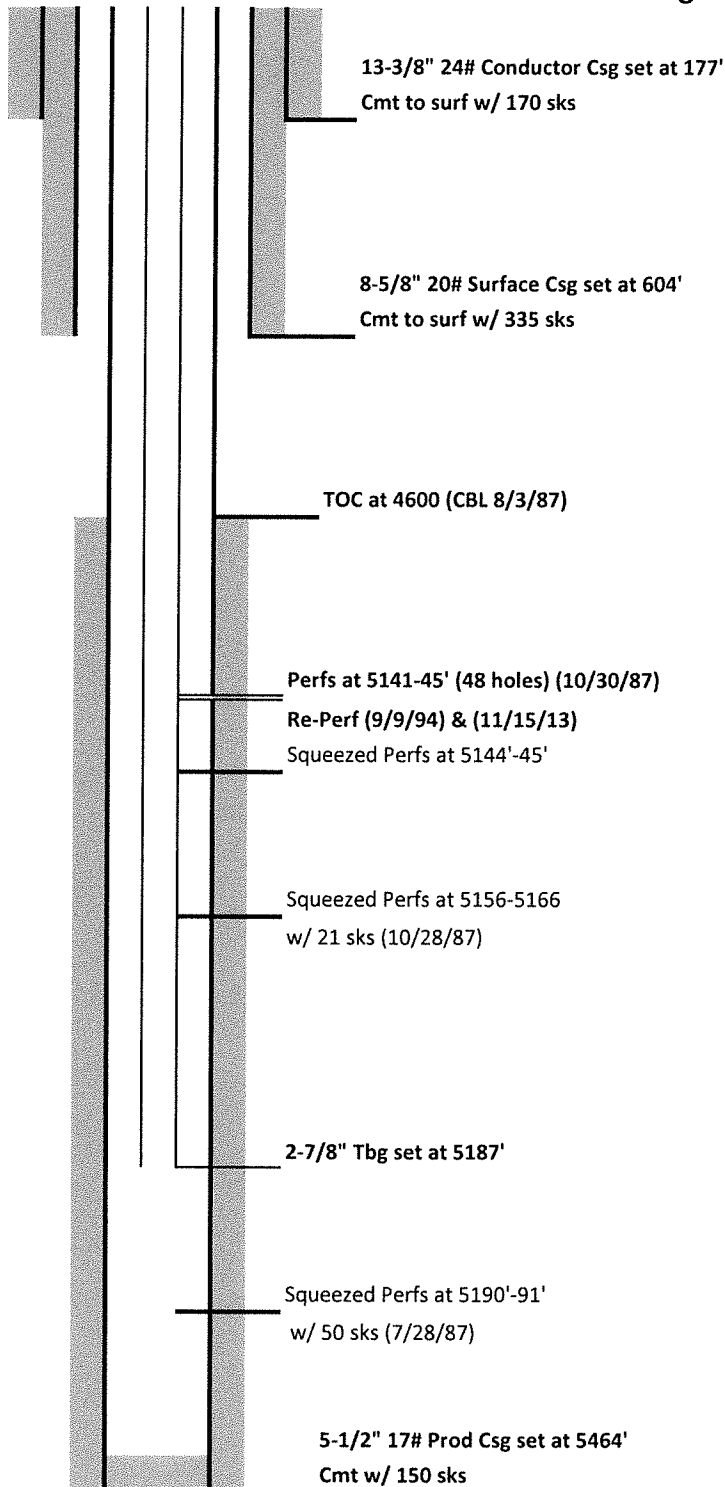




DRILLING COMPANY, INC.
WICHITA, KANSAS

Current Wellbore Configuration



Date: 5/2/2022
 Well Name: Frontera Upper Sand Unit #5-1
 FKA: Mull #1 State-Line Ranch
 Location: 660' FNL & 660' FWL
 NW/4 NW/4 18-15S-41W
 County: Cheyenne
 State: CO
 API: 05-017-06663-00
 KB: 3943'
 GL: 3948'
 Spud Date: 7/9/1987

Formation	Log Top
FORT HAYS	1040'
CODELL	1103'
GREENHORN	1295'
DAKOTA	1500'
CHEYENNE	1846'
MORRISON	1900'
BLAINE	2336'
CEDAR HILLS	2654'
NEVA	3530'
SHAWNEE	3952'
LANSING	4229'
MARMATON	4634'
CHEROKEE K	4775'
MORROW	5072'
KEYES	5173'
SPERGEN	5382'

PBTD: 5211
 RTD: 5465'