



CEMENT BOND LOG W/
VARIABLE DENSITY
GAMMA RAY, CCL, TEMP

Company	GMT EXPLORATION CO.		
Well	REDSTONE 6-65 24-36 1HN		
Field	WILDCAT		
County	ELBERT		
State	COLORADO		
Location:	API # : 05-039-06703-00		Other Services
	39.510619 / -104.617930		
Permanent Datum	GL	Elevation	6276'
Log Measured From	KB 23'		
Drilling Measured From	KB		
SEC 24 TWP 6S RGE 65W			

Run Number	ONE						
Depth Driller	2727'						
Depth Logger	700'						
Bottom Logged Interval	700'						
Top Log Interval	SURFACE						
Open Hole Size	-						
Type Fluid	-						
Density / Viscosity	-						
Max. Recorded Temp.	75						
Estimated Cement Top	-						
Time Well Ready	1130						
Time Logger on Bottom	1145						
Equipment Number	65						
Location	PLATTEVILLE						
Recorded By	M. QUINT						
Witnessed By	K. MOSELEY						
Borehole Record				Tubing Record			
Run Number	Bit	From	To	Size	Weight	From	To
Casing Record	Size			Wgt/Ft		Top	Bottom
Surface String	9-5/8"			36#		SURFACE	2727'
Prot. String							
Production String							
Liner							

<<< Fold Here >>>

All interpretations are opinions based on inferences from electrical or other measurements and we cannot and do not guarantee the accuracy or correctness of any interpretation, and we shall not, except in the case of gross or willful negligence on our part, be liable or responsible for any loss, costs, damages, or expenses incurred or sustained by anyone resulting from any interpretation made by any of our officers, agents or employees. These interpretations are also subject to our general terms and conditions set out in our current Price Schedule.

Comments

LOG RAN OFF OF 23' K.B.
HOLE WAS FILLED BEFORE LOG STARTED

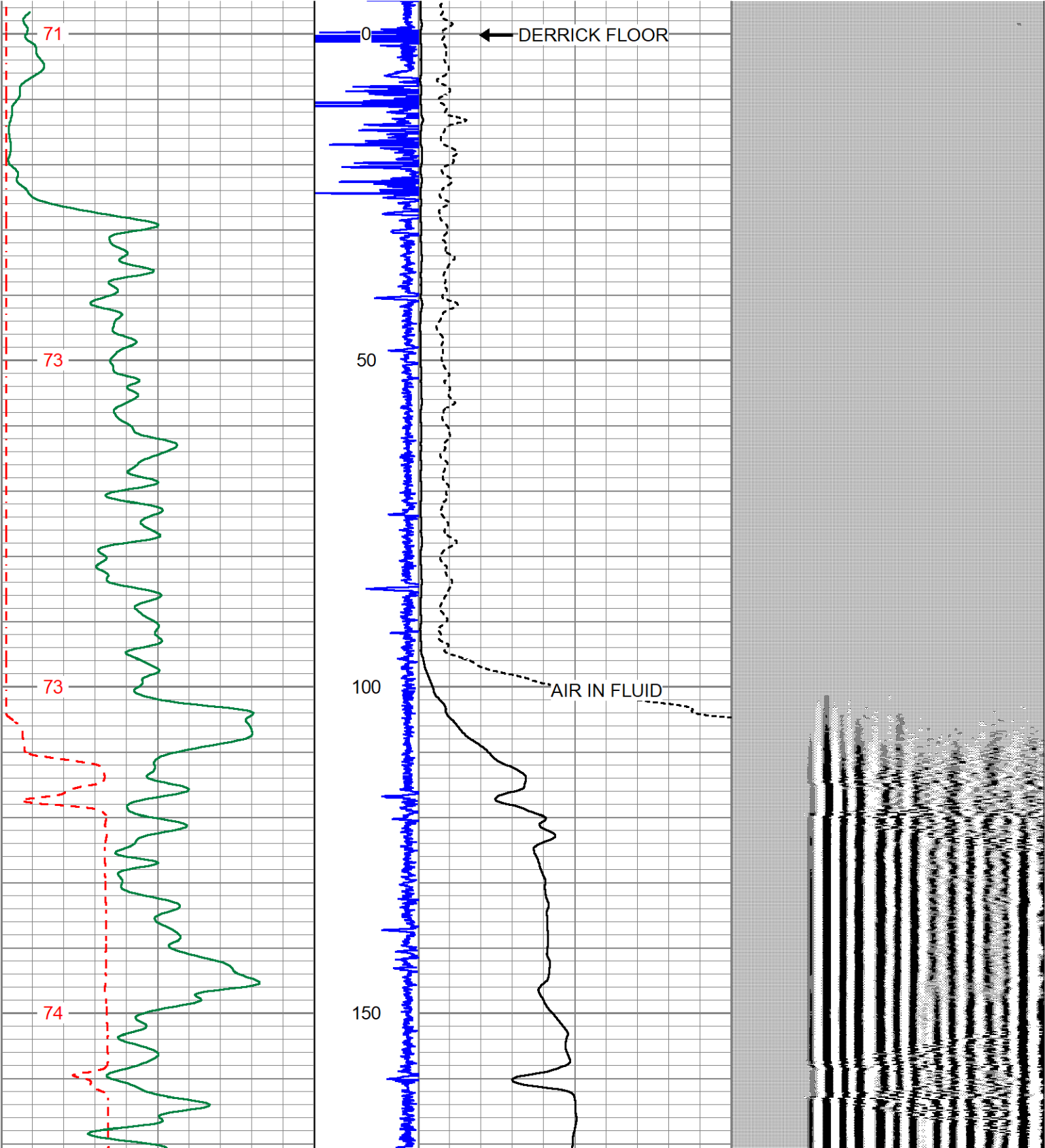
THANK YOU FOR CHOOSING KLX ENERGY SERVICES

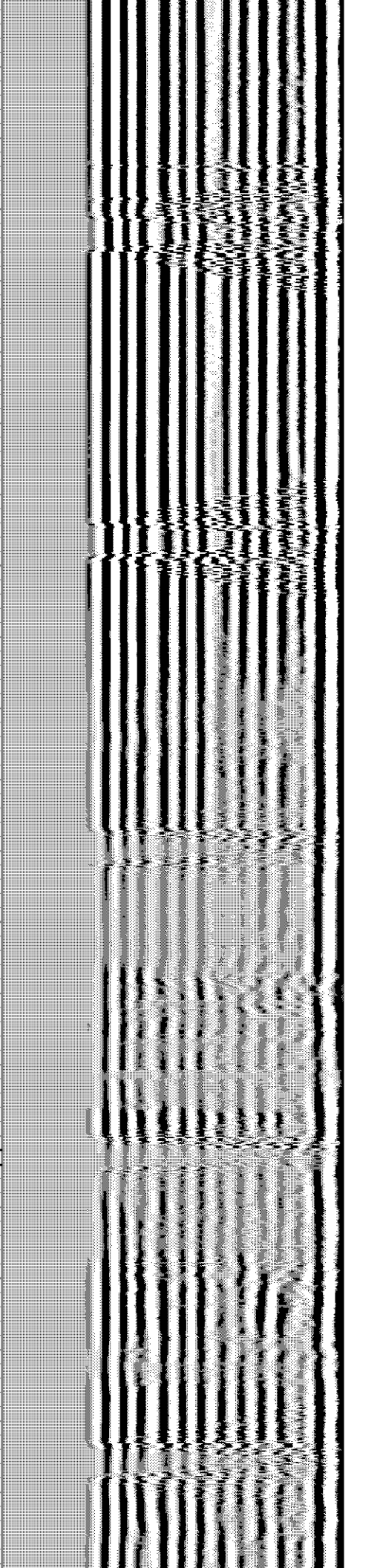
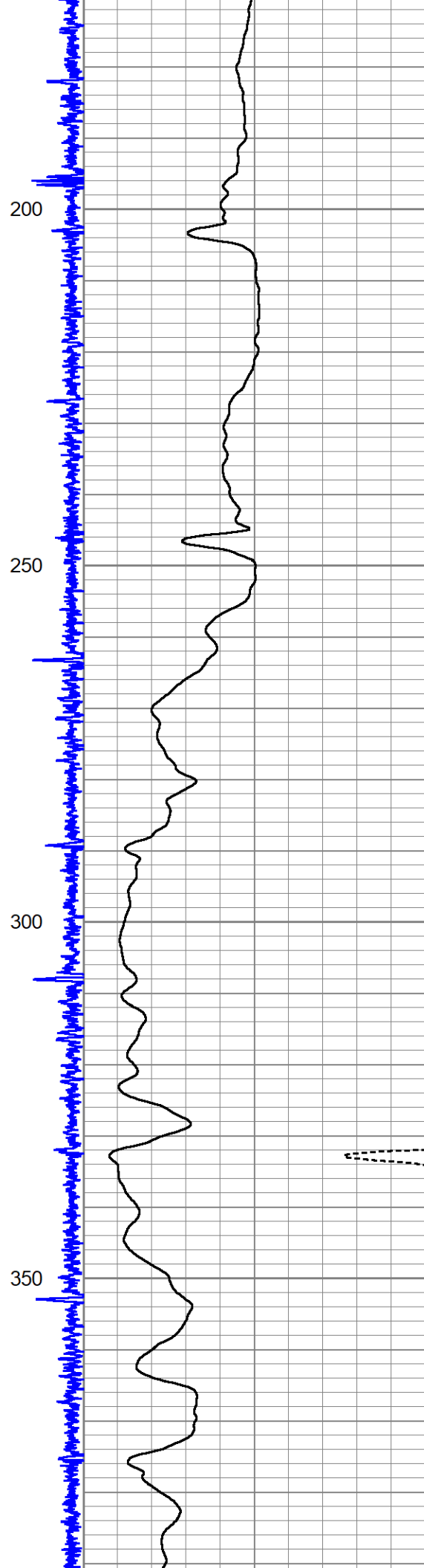
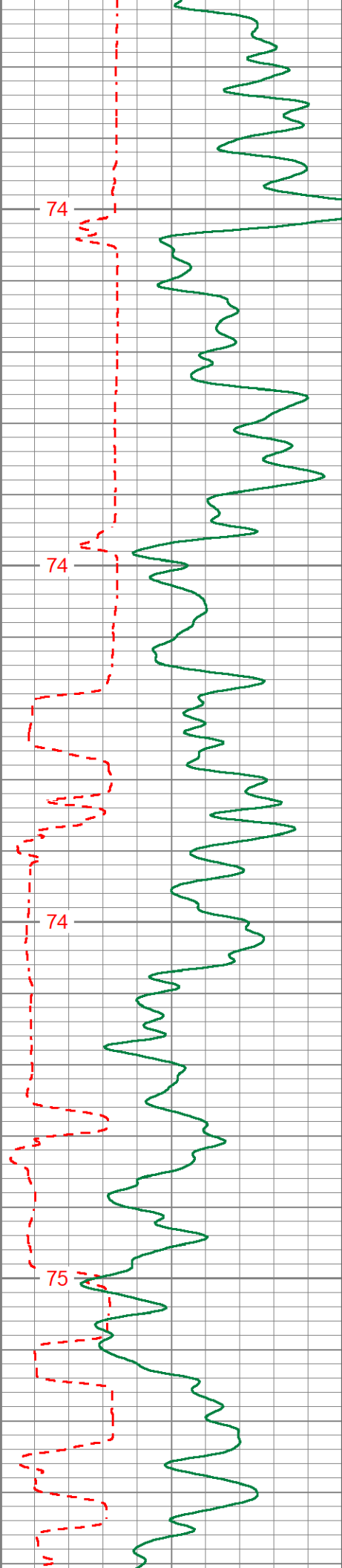


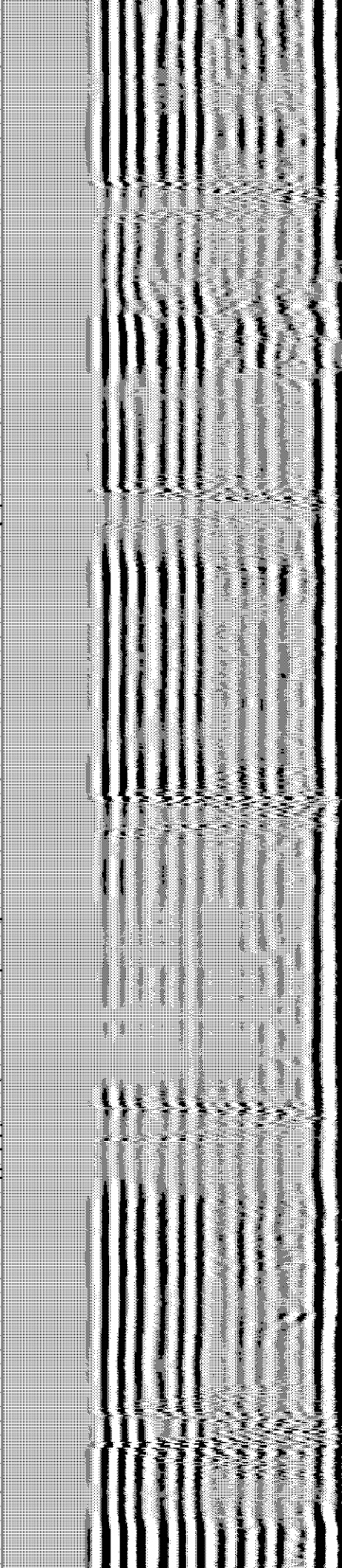
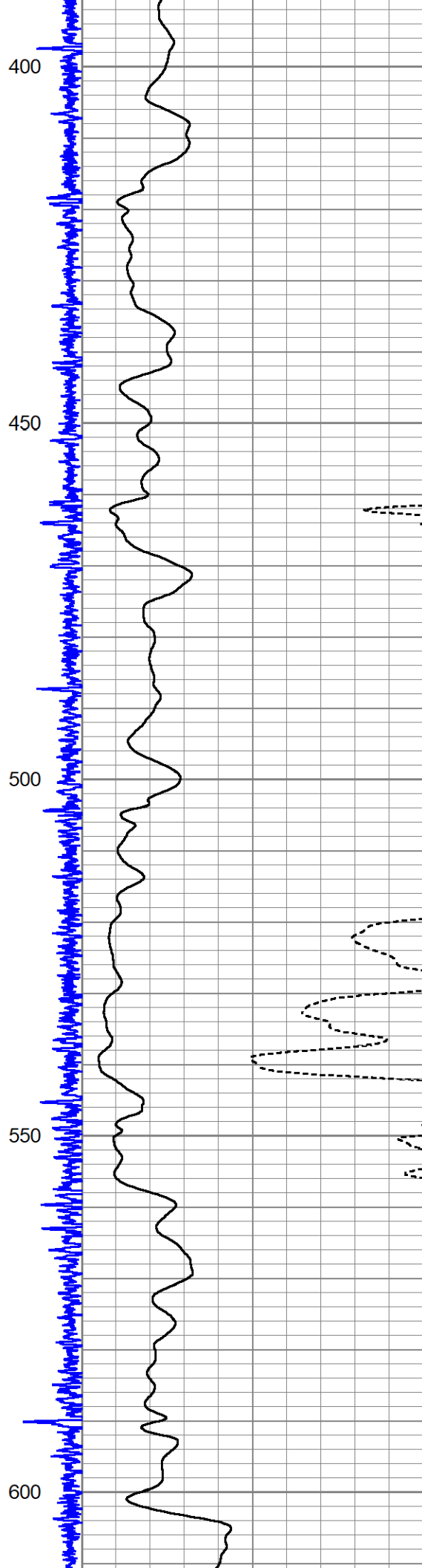
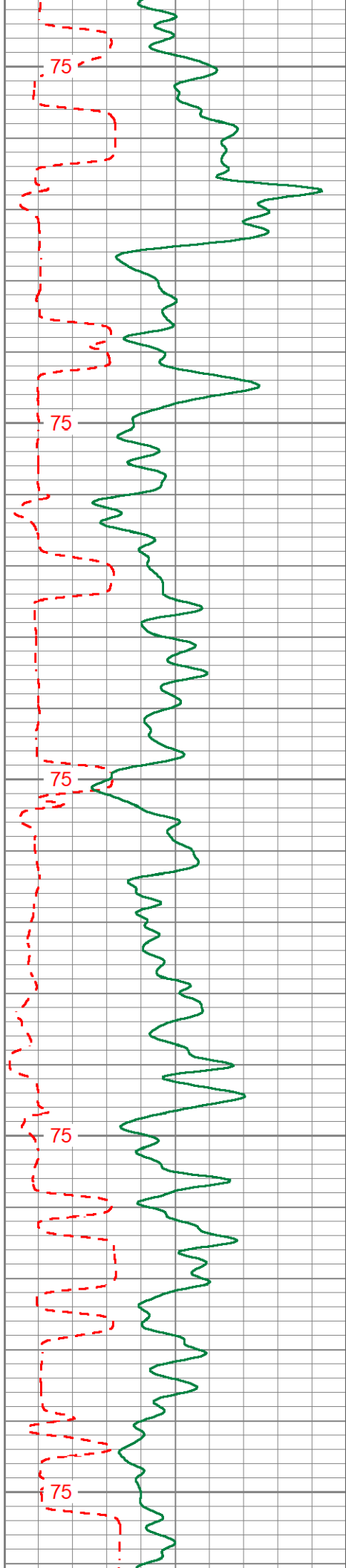
MAIN PASS

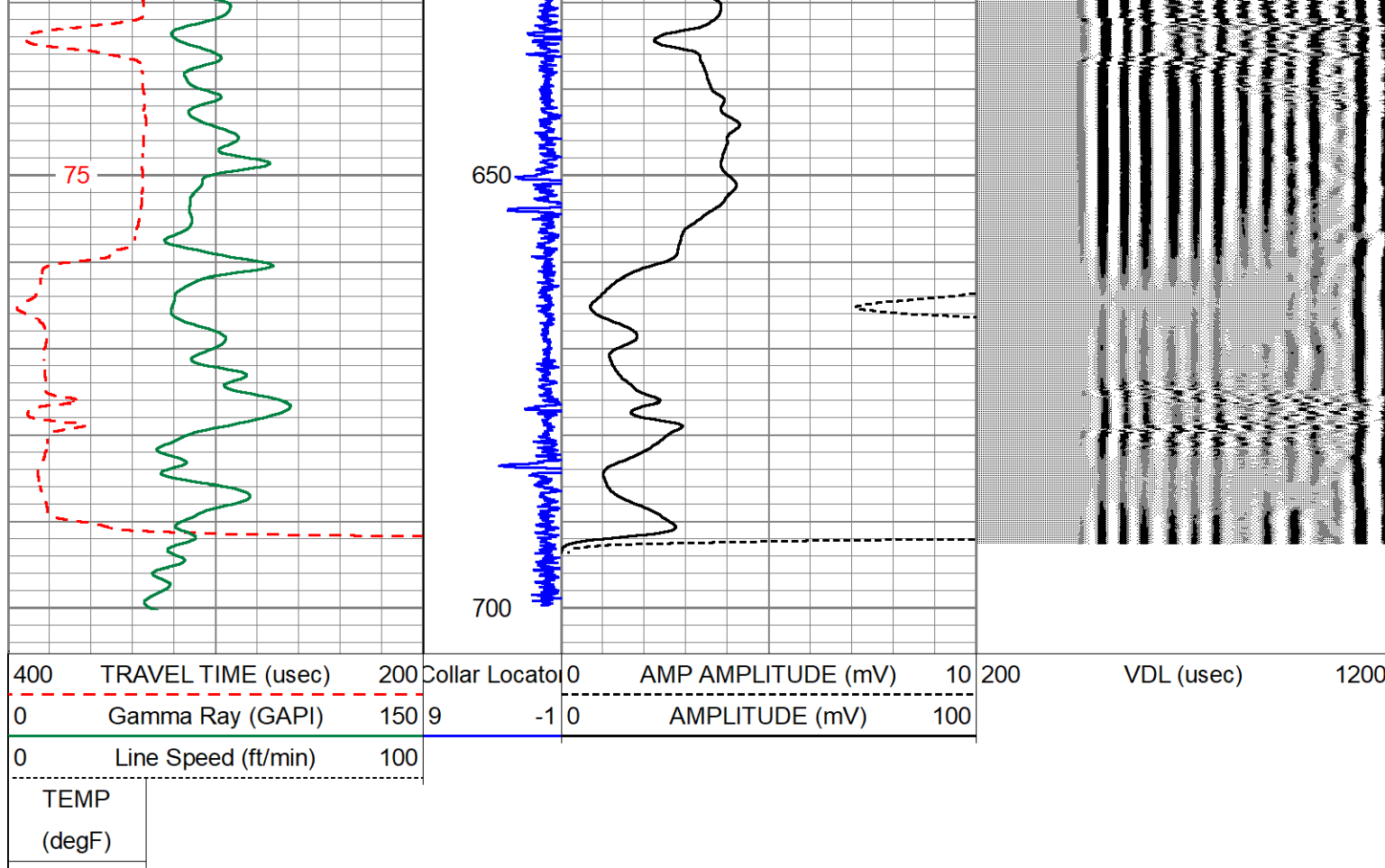
Database File	gmt_redstone_6-65_24-36_1hn_cbl.db
Dataset Pathname	run2/cbl2
Presentation Format	cbl_kg
Dataset Creation	Fri May 06 12:09:11 2022
Charted by	Depth in Feet scaled 1:240

400	TRAVEL TIME (usec)	200	Collar Location	0	AMP AMPLITUDE (mV)	10	200	VDL (usec)	1200
0	Gamma Ray (GAPI)	150	9	-1	0	AMPLITUDE (mV)	100		
0	Line Speed (ft/min)	100							
TEMP									
(degF)									









Calibration Report						
Database File	gmt_redstone_6-65_24-36_1hn_cbl.db					
Dataset Pathname	run2/cbl2					
Dataset Creation	Fri May 06 12:09:11 2022					
Gamma Ray Calibration Report						
Serial Number:	080831					
Tool Model:	Probe275dig					
Performed:	(Not Performed)					
Calibrator Value:	1.0	GAPI				
Background Reading:	0.0	cps				
Calibrator Reading:	1.0	cps				
Sensitivity:	1.0000	GAPI/cps				
Segmented Cement Bond Log Calibration Report						
Serial Number:	FW1304-128					
Tool Model:	Probe 2.75 Radii W/Temp					
Calibration Casing Diameter:	9.625	in				
Calibration Depth:	619.800	ft				
Master Calibration, performed (Derived):						
	Raw (v)		Calibrated (mv)		Results	
	Zero	Cal	Zero	Cal	Gain	Offset
3'	0.005	0.405	1.000	51.280	125.759	0.341
CAL	0.003	1.005				



5'	0.007	0.468	1.000	51.280	109.229	0.204
SUM						
S1	-0.003	0.362	0.000	100.000	273.756	0.869
S2	0.005	0.352	0.000	100.000	288.538	-1.484
S3	0.006	0.368	0.000	100.000	275.810	-1.582
S4	0.006	0.400	0.000	100.000	253.215	-1.398
S5	0.005	0.443	0.000	100.000	228.213	-1.070
S6	0.007	0.474	0.000	100.000	214.163	-1.410
S7	0.006	0.458	0.000	100.000	221.320	-1.354
S8	0.007	0.424	0.000	100.000	239.584	-1.564

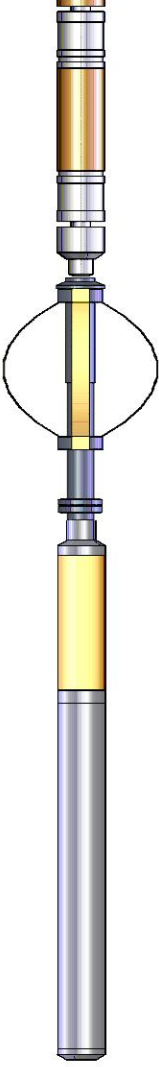
Internal Reference Calibration, performed (Not Performed):

	Raw (v)		Calibrated (v)		Results	
	Zero	Cal	Zero	Cal	Gain	Offset
CAL	0.000	0.000	0.003	1.005	1.000	0.000

Air Zero Calibration, performed Wed Apr 27 09:05:54 2022:

	Raw (v)		Calibrated (v)		Results	
	Zero		Zero		Offset	
3'	0.000		0.000		0.000	
5'	0.000		0.000		0.000	
SUM						
S1	0.000		0.000		0.000	
S2	0.000		0.000		0.000	
S3	0.000		0.000		0.000	
S4	0.000		0.000		0.000	
S5	0.000		0.000		0.000	
S6	0.000		0.000		0.000	
S7	0.000		0.000		0.000	
S8	0.000		0.000		0.000	

Sensor	Offset (ft)	Schematic	Description	Length (ft)	O.D. (in)	Weight (lb)
Temp	15.75		CHD-Titan Titan 1 7/16" GO Cablehead	1.00	1.44	5.00
			CENT-Probe275 2.75" Centralizer	2.88	2.75	36.00
			RBT-Probe 2.75 Radii W/Temp (FW1304-128) Probe 2.75" Radial with Integral Temperature Sub	9.21	2.75	90.00
WVFS8	13.52					
WVFS7	13.52					
WVES6	13.52					

WVFS6	13.52		2.88	2.75	36.00
WVFS5	13.52				
WVFS4	13.52				
WVFS3	13.52				
WVFS2	13.52				
WVFS1	13.52				
WVFCAL	13.52				
WVF3FT	13.52				
WVF5FT	12.52				
HeadVolt	9.27				
CCL	5.44				
GR	1.42				
Dataset: gmt_redstone_6-65_24-36_1hn_cbl.db: field/well/run2/cbl2 Total length: 22.35 ft Total weight: 224.00 lb O.D.: 2.75 in					