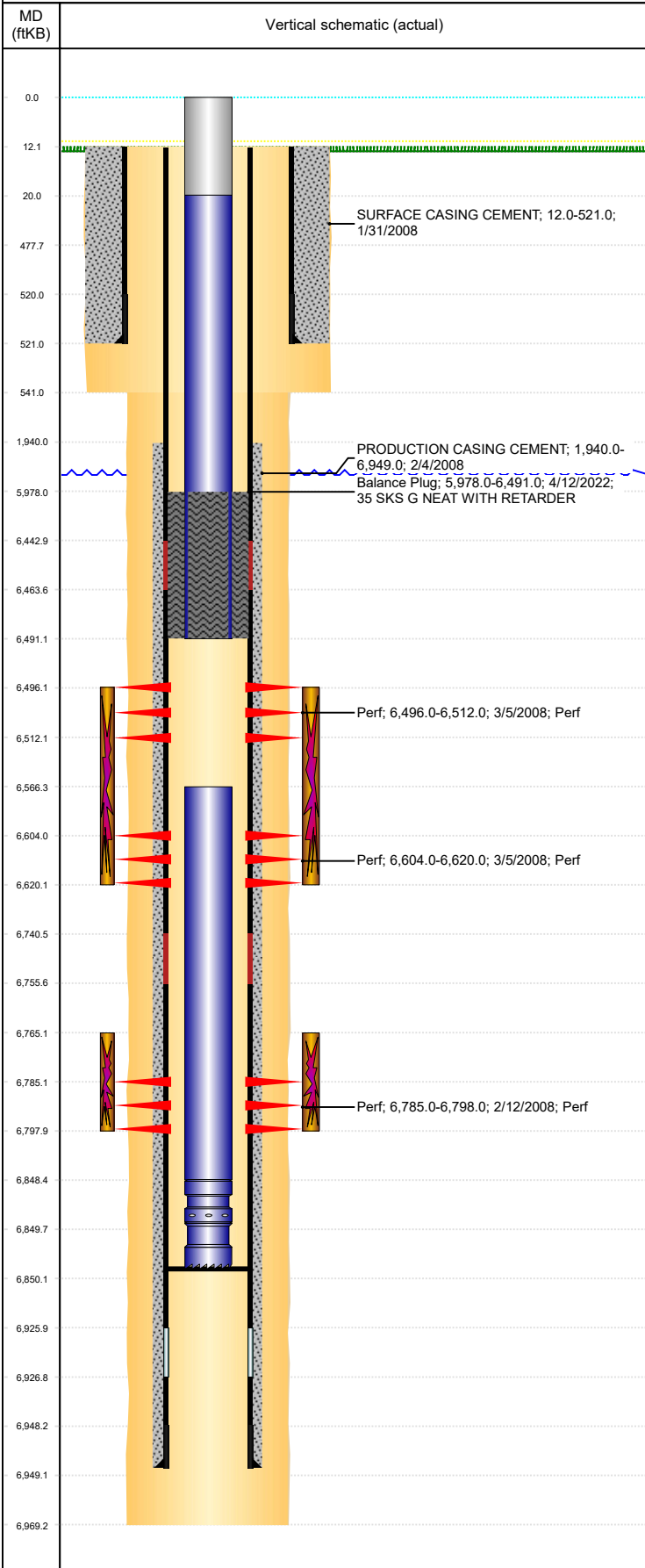


**Well Name: PATRIOT B16-18**

VERTICAL, ORIGINAL HOLE, 5/9/2022 8:37:50 AM



**Well Header**

API 05-123-25367	Business Unit DJ BASIN	District 15	Well Config VERTICAL
KB - GL / MSL (ft...) 13.00	Spud Date 1/30/2008	P & A Date	Well Production Status TA
SoRT Yes			

**Surface Location (Congressional)**

Qtr 3 NE	Qtr 4 NW	Section 16	Twnshp 5	Twnsh... N	Range 64	Rng E... W	Actual Latitude (°) 40.40312337	Actual Longitude (°) -104.55504767
-------------	-------------	---------------	-------------	---------------	-------------	---------------	------------------------------------	---------------------------------------

**Wellbore Sections**

Section Des	Size (in)	Act Top, MD (ftKB)	Act Btm, MD (ftKB)
SURFACE	12 1/4	12	541
PRODUCTION	7 7/8	541	6,969

**Casing Strings**

Csg Des	Run Date	OD (in)	Wt/Len (lb/ft)	Grade	Top, MD (ftKB)	MD (ftKB)
Surface	1/31/2008	8 5/8	24.00	J-55	12.2	521.0
Production	2/3/2008	4 1/2	11.60	M-80	12.3	6,949.0

**Cement**

Des	Start Date	Top (ftKB)	Btm (ftKB)
SURFACE CASING CEMENT	1/31/2008	12.0	521.0
PRODUCTION CASING CEMENT	2/4/2008	1,940.0	6,949.0
Balance Plug	4/12/2022	5,978.0	6,491.0

**Zone Statuses**

Zone Name	Status Date	Status	Fluid Type	Job	Prod Method
CODELL	3/18/2008	PR	Gas	DRILLING/COMPLETION - ORIGINAL, 1/29/2008...	
CODELL	4/12/2022	TA	Gas	SET CEMENT PLUG, 4/1/2022 00:00	
NIOBRARA	3/18/2008	PR	Gas	DRILLING/COMPLETION - ORIGINAL, 1/29/2008...	
NIOBRARA	4/12/2022	TA	Gas	SET CEMENT PLUG, 4/1/2022 00:00	

**Perforation Data**

Linked Zone	Bnch/Stg	Entered Shot Total	Top (ftKB)	Btm (ftKB)	Date
NIOBRARA, ORIGINAL HOLE	A	64	6,496.00	6,512.00	3/5/2008
NIOBRARA, ORIGINAL HOLE	B	64	6,604.00	6,620.00	3/5/2008
CODELL, ORIGINAL HOLE		52	6,785.00	6,798.00	2/12/2008

**Stimulation Intervals**

Zone	Start Date	Top (ftKB)	Btm (ftKB)
NIOBRARA, ORIGINAL HOLE	3/5/2008	6,496.0	6,620.0
CODELL, ORIGINAL HOLE	3/5/2008	6,765.0	6,798.0

**Other In Hole**

Run Date	Des	Make	OD (in)	Top (ftKB)	Btm (ftKB)

**Logs**

Date	Type	Top, MD (ftKB)	Btm, MD (ftKB)
2/7/2008	CBL/CCL/GR	1,750.0	6,908.0
12/20/2010	GYRO	13.0	6,700.0

**Plug Back Total Depths**

Date	Type	Com	Depth (ftKB)
2/4/2008	FLOAT COLLAR		6,927.0
10/7/2008	PLUG REMNANTS	DRILL CIFTP W/ CUTRITE BLADE BIT AND CHASE DOWN TO...	6,850.0