

Inspection Photos
Operator: Simcoe
API: 067-08358
Date: 5/9/2022



Photo 1. View of the project area from the well pad entrance facing center.



Photo 2. View of the eastern project area from the southeastern corner facing northward. Revegetation is progressing with smooth brome, sand dropseed, crested wheatgrass, and western wheatgrass.

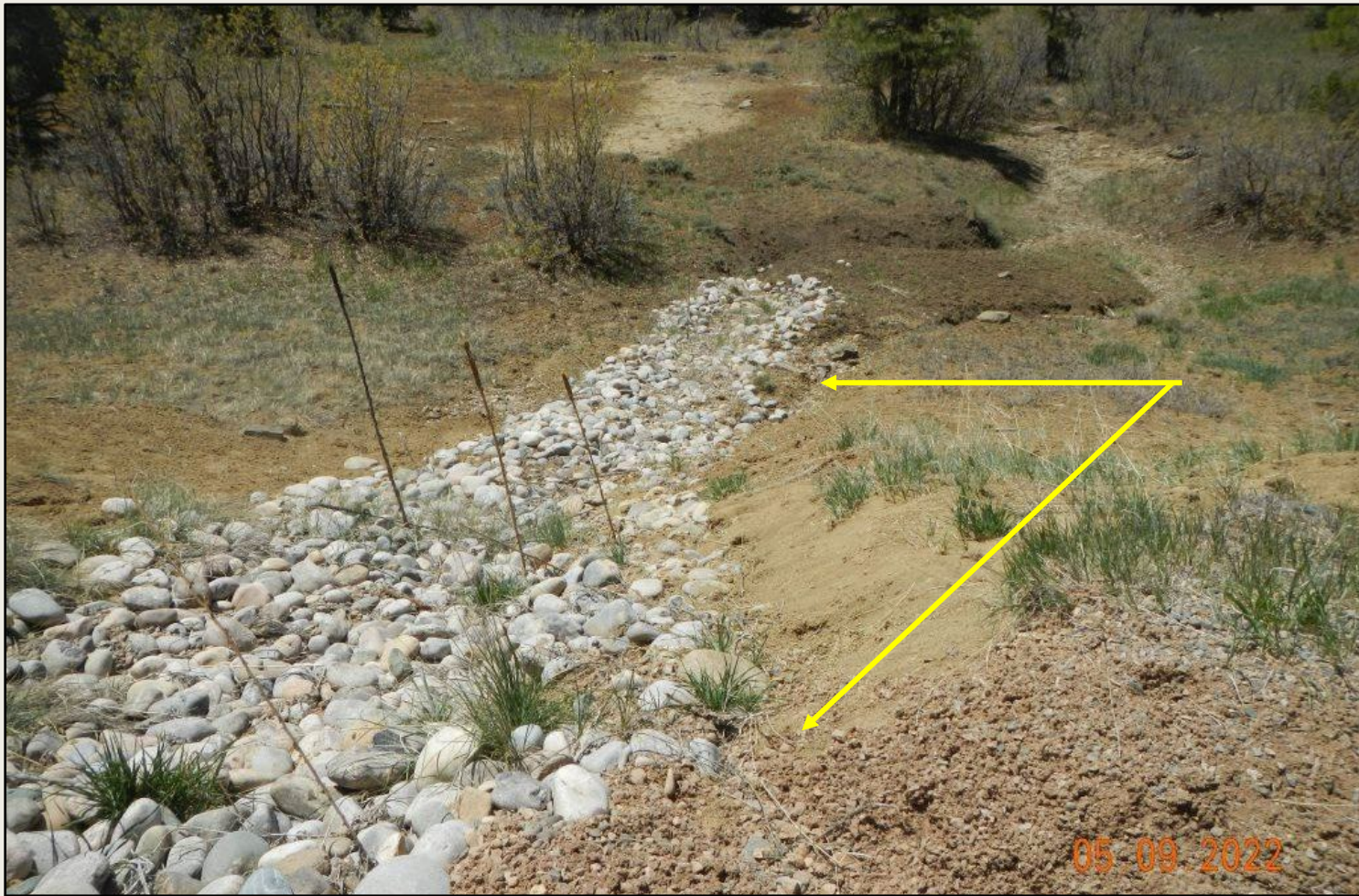


Photo 3. View of cobble BMP within the southern project area, needing maintenance. Concentrated stormwater flows are eroding along the edge of the BMP (yellow arrows) resulting in continued erosion downstream and sediment discharge.



Photo 4. View of reference area comprised of ponderosa pine forest with gambel oak, Oregon grape, balsamroot, and muttongrass.