

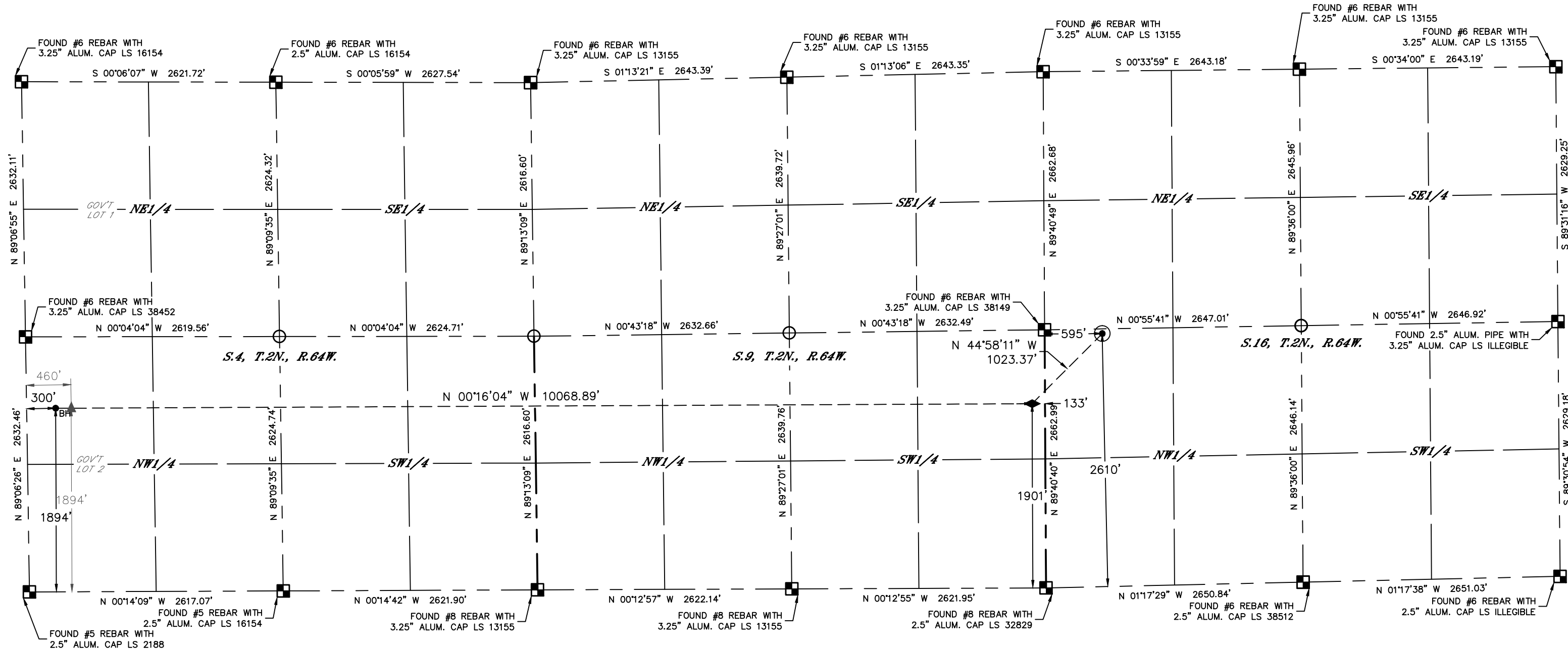


Lat40°, Inc. 6250 W. 10th Street, Unit 2, Greeley, CO 970-515-5294

WELL LOCATION CERTIFICATE

GIG-EM STATE Y9-761
NOBLE ENERGY INC

Q: NW/4,NE/4
SECTION: 16
TOWNSHIP: 2N
RANGE: 64W
6TH. P.M.
WELD, CO

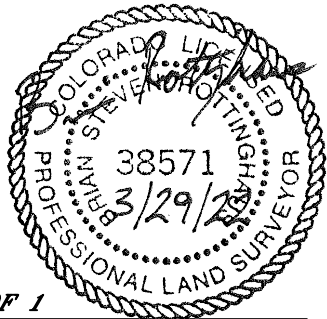
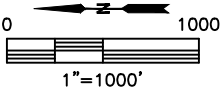


- LEGEND
- = ALIQUOT MONUMENT AS DESCRIBED
 - = CALCULATED POSITION
 - ⊙ = SURFACE HOLE LOCATION (SHL)
 - ◆ = TOP OF PRODUCTIVE ZONE (TPZ)
 - ▲ = BOTTOM OF PRODUCTIVE ZONE (BPZ)
 - = BOTTOM HOLE LOCATION (BHL)
 - ⊙ = EXISTING WELL
 - ⊙ = ABANDONED WELL

| CLIENT: NOBLE ENERGY INC | | | | | LANDMAN: GREG WILSON | | | |
|------------------------------------|-----|------------|-----------|-----------|------------------------|-------------|---------------------------|-------------------|
| INSTRUMENT OPERATOR: RYAN CHAMPION | | | | | SURVEY DATE: 2/10/2022 | | SURFACE USE: EXISTING PAD | |
| SHL FOOTAGE | | SHL LAT° | SHL LONG° | SHL PDOP | SHL ELEV (FT.) | SHL 1/4/1/4 | SHL S-T-R | |
| 595 | FNL | 2610 | FWL | 40.14413 | -104.55667 | 1.9 | 4911 | NENW 16-2-64 |
| BHL FOOTAGE | | BHL LAT° | BHL LONG° | BHL S-T-R | TPZ LAT° | TPZ LONG° | TPZ S-T-R | |
| 300 | FNL | 1894 | FWL | 40.17377 | -104.55902 | 4-2-64 | 40.14614 | -104.55923 9-2-64 |
| BPZ LAT° | | BPZ LONG° | BPZ S-T-R | | | | | |
| 40.17333 | | -104.55902 | 4-2-64 | | | | | |

NOTE:

- Bearings shown are Grid Bearings of the Colorado State Plane Coordinate System, North Zone, North American Datum 1983. The lineal dimensions as contained herein are based upon the "U.S. Survey Foot."
- Distances to section lines measured at 90 degrees from said section lines.
- Ground elevations are based on an observed GPS elevation (NAVD 1988 DATUM).
- Latitude and Longitude shown are (NAD 83 DATUM).
- IMPROVEMENTS: See LOCATION DRAWING for all visible improvements.
- This map does not represent a boundary survey.



SHEET 1 OF 1
Brian S. Rottinghaus—On behalf of Lat40°, Inc.
Colorado Licensed Professional Land Surveyor No. 38571
DATE: 3/29/2022
PROJECT#: 2022033