

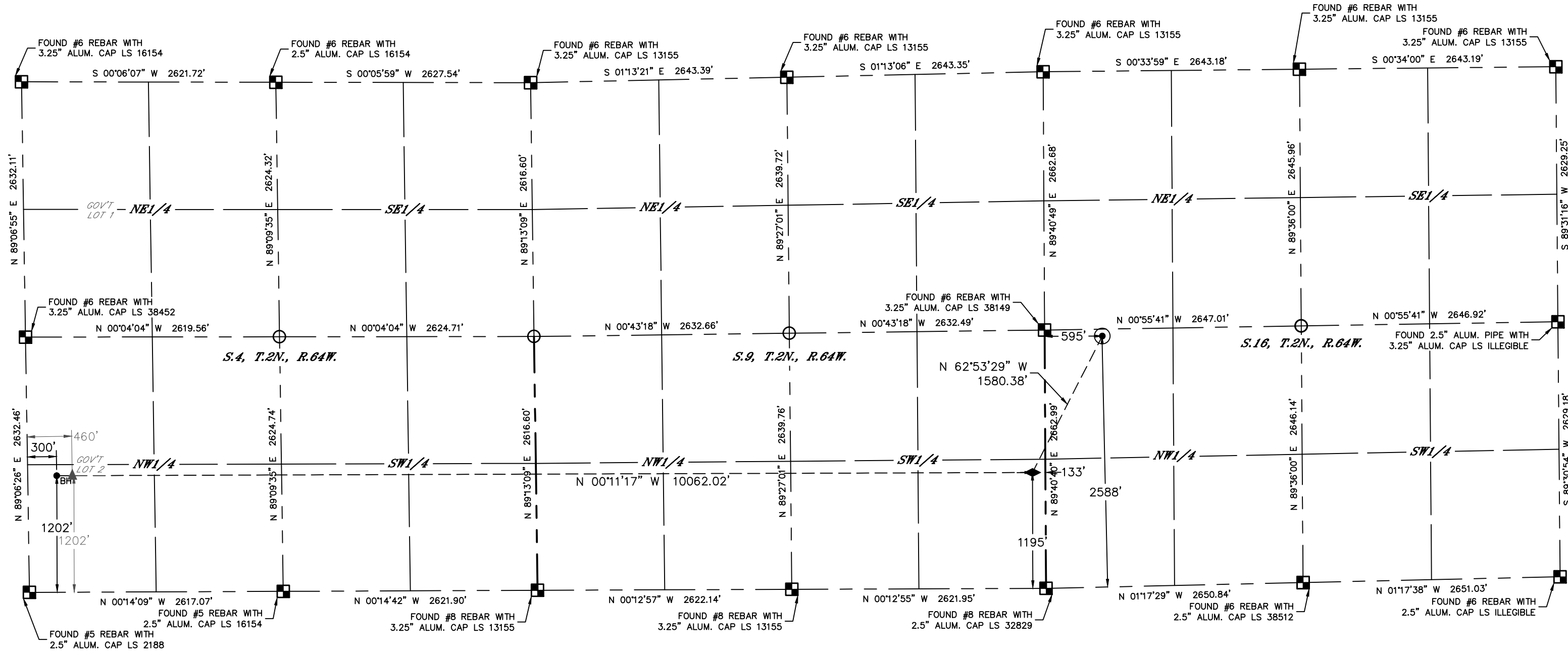


Lat40°, Inc. 6250 W. 10th Street, Unit 2, Greeley, CO 970-515-5294

WELL LOCATION CERTIFICATE

GIG-EM STATE Y9-772  
NOBLE ENERGY INC

Q: NW/4,NE/4  
SECTION: 16  
TOWNSHIP: 2N  
RANGE: 64W  
6TH. P.M.  
WELD, CO



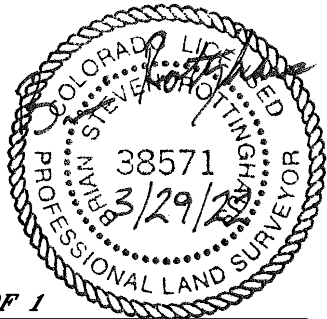
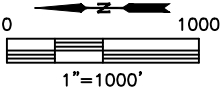
- LEGEND
- = ALIQUOT MONUMENT AS DESCRIBED
  - = CALCULATED POSITION
  - = SURFACE HOLE LOCATION (SHL)
  - ◆ = TOP OF PRODUCTIVE ZONE (TPZ)
  - ▲ = BOTTOM OF PRODUCTIVE ZONE (BPZ)
  - <sub>BH</sub> = BOTTOM HOLE LOCATION (BHL)
  - ⊙ = EXISTING WELL
  - ⊙ = ABANDONED WELL

CLIENT: NOBLE ENERGY INC					LANDMAN: GREG WILSON				
INSTRUMENT OPERATOR: RYAN CHAMPION					SURVEY DATE: 2/10/2022		SURFACE USE: EXISTING PAD		
SHL FOOTAGE				SHL LAT °	SHL LONG °	SHL PDOP	SHL ELEV (FT.)	SHL 1/4/1/4	SHL S-T-R
595	FNL	2588	FWL	40.14413	-104.55675	1.9	4911	NENW	16-2-64

BHL FOOTAGE				BHL LAT°	BHL LONG°	BHL S-T-R	TPZ LAT°	TPZ LONG°	TPZ S-T-R
300	FNL	1202	FWL	40.17376	-104.56149	4-2-64	40.14615	-104.56175	9-2-64

BPZ LAT°	BPZ LONG°	BPZ S-T-R
40.17332	-104.56150	4-2-64

- NOTE:
- Bearings shown are Grid Bearings of the Colorado State Plane Coordinate System, North Zone, North American Datum 1983. The lineal dimensions as contained herein are based upon the "U.S. Survey Foot."
  - Distances to section lines measured at 90 degrees from said section lines.
  - Ground elevations are based on an observed GPS elevation (NAVD 1988 DATUM).
  - Latitude and Longitude shown are (NAD 83 DATUM).
  - IMPROVEMENTS: See LOCATION DRAWING for all visible improvements.
  - This map does not represent a boundary survey.



**SHEET 1 OF 1**  
Brian S. Rottinghaus—On behalf of Lat40°, Inc.  
Colorado Licensed Professional Land Surveyor No. 38571  
DATE: 3/29/2022  
PROJECT#: 2022033