



SECTOR BOND LOG
GAMMA RAY
CCL LOG

Company	Occidental Petroleum Corporation	Country	USA
Well	Dolores 7-32A		
Field	Wattenberg		
County	Weld		
State	Colorado		
Location:	SWNE	API #:	05-123-20802
	LAT: 40.182766 LONG: -104.7985643		
	SEC 32 TWP 3N RGE 66W		
Permanent Datum	GL	Elevation	4888'
Log Measured From	GL		
Drilling Measured From	KB		
		K.B:	4900'
		D.F.:	----
		G.L.:	4888'

Date	28-FEB-2022
Run Number	ONE
Depth Driller	7970'
Depth Logger	900'
Bottom Logged Interval	900'
Top Log Interval	SURFACE
Open Hole Size	7.875"
Type Fluid	WATER
Density / Viscosity	N/A
Max. Recorded Temp.	N/A
Estimated Cement Top	N/A
Time Well Ready	N/A
Time Logger on Bottom	N/A
Equipment Number	1016
Location	BRIGHTON CO
Recorded By	P LOPEZ
Witnessed By	MR. JARROD BISHOP

Run Number	Borehole Record			Tubing Record			
	Bit	From	To	Size	Weight	From	To
Casing Record							
Surface String		8.5/8"		24		SURFACE	668'
Prot. String							
Production String		4.50"		11.6		SURFACE	7953'
Liner							


<<< Fold Here >>>

All interpretations are opinions based on inferences from electrical or other measurements and we cannot and do not guarantee the accuracy or correctness of any interpretation, and we shall not, except in the case of gross or willful negligence on our part, be liable or responsible for any loss, costs, damages, or expenses incurred or sustained by anyone resulting from any interpretation made by any of our officers, agents or employees. These interpretations are also subject to our general terms and conditions set out in our current Price Schedule.

Comments

SCBL ZEROED AT GROUND LEVEL

THANK YOU FOR USING RANGER ENERGY SERVICES

Sensor	Offset (ft)	Schematic	Description	Length (ft)	O.D. (in)	Weight (lb)
			Cable_Head-1_7/16 Titan 1 7/16" Cable Head	1.02	1.44	3.31

			Centralizers-8071-275-200 Tekco 2 3/4" Adjustable Centralizer	2.73	2.75	25.00
WVFSYNC	18.46					
WVFCAL	18.46					
TEMP	17.33					
WVFS8	16.04					
WVFS7	16.04		SCBLTEKSECT-275 Temp JS (IBUCO04) TekCo 2 3/4" 400 Deg. F Sector Tool with Temperature	9.13	2.75	130.00
WVFS6	16.04					
WVFS5	16.04					
WVFS4	16.04					
WVFS3	16.04					
WVFS2	16.04					
WVFS1	16.04					
WVF3FT	15.29					
WVF5FT	14.29					
WVFTEMP	10.96					
			Centralizers-8071-275-200 Tekco 2 3/4" Adjustable Centralizer	2.73	2.75	25.00
CCL	7.08		CCL-275tekco (111) Tekco 2 3/4" 450 Deg. F Rare Earth Magnets	1.83	2.75	33.00
GR	3.77		GR-Tek-Co 2 3/4 (0111) Tekco 2 3/4" 400 Deg. F Logging Gamma Ray	3.67	2.75	40.00
			Centralizers-8071-275-200 Tekco 2 3/4" Adjustable Centralizer	2.73	2.75	25.00

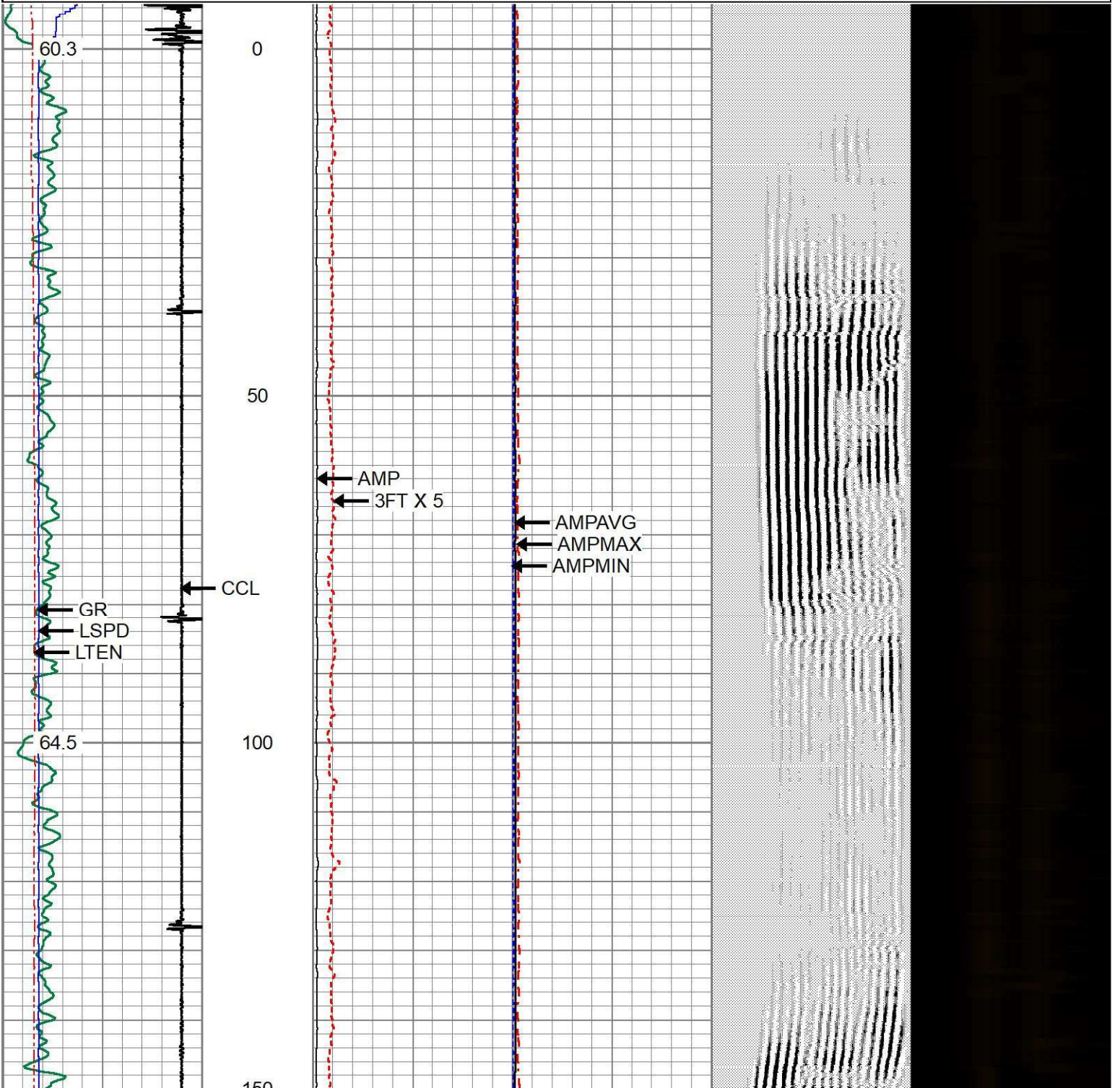
Dataset: oxy_dolores 7-32a_0512320802_20220228_scbl.db: field/well/run1/pass7.1
 Total length: 23.83 ft
 Total weight: 281.31 lb
 O.D.: 2.75 in

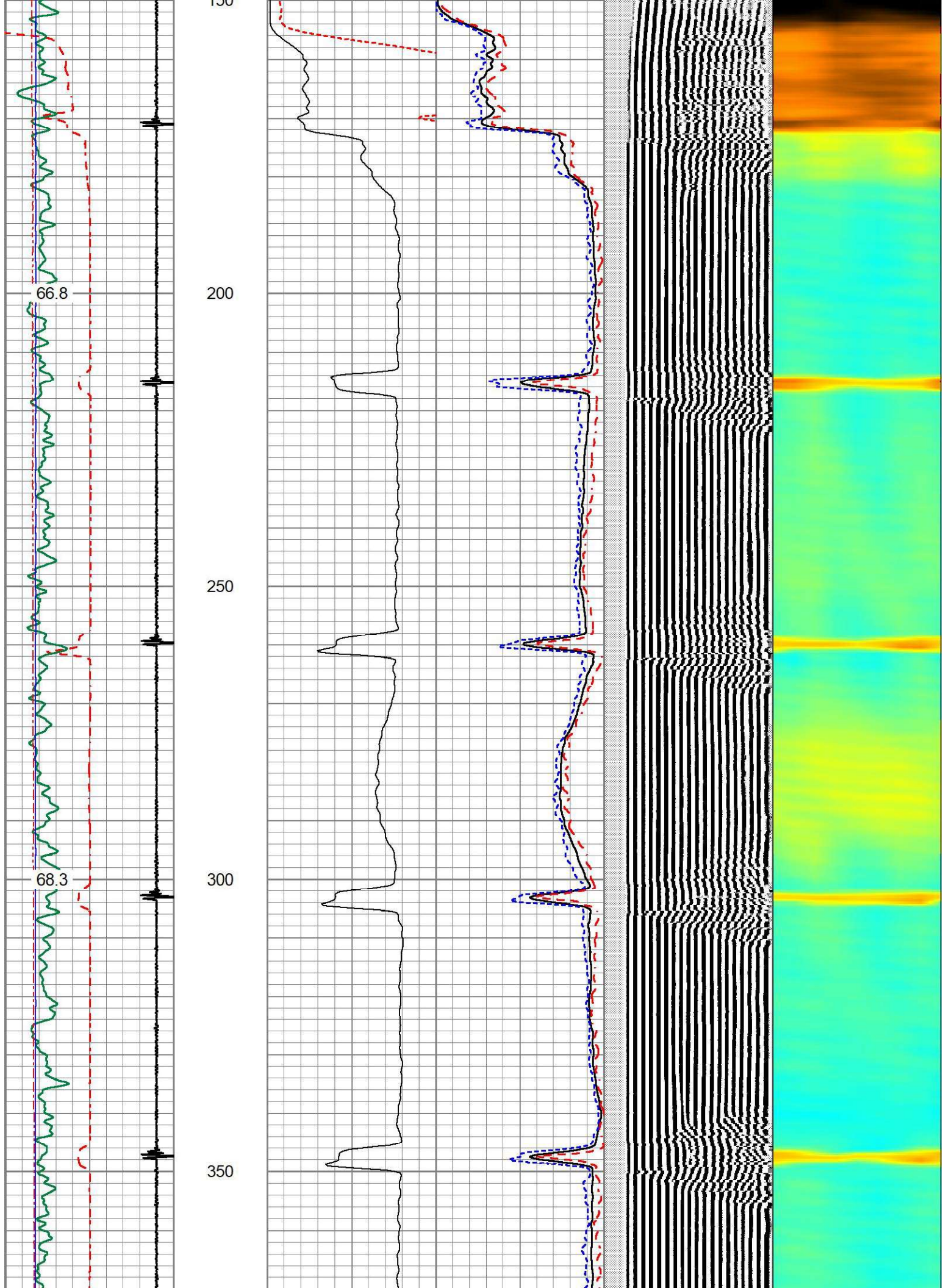


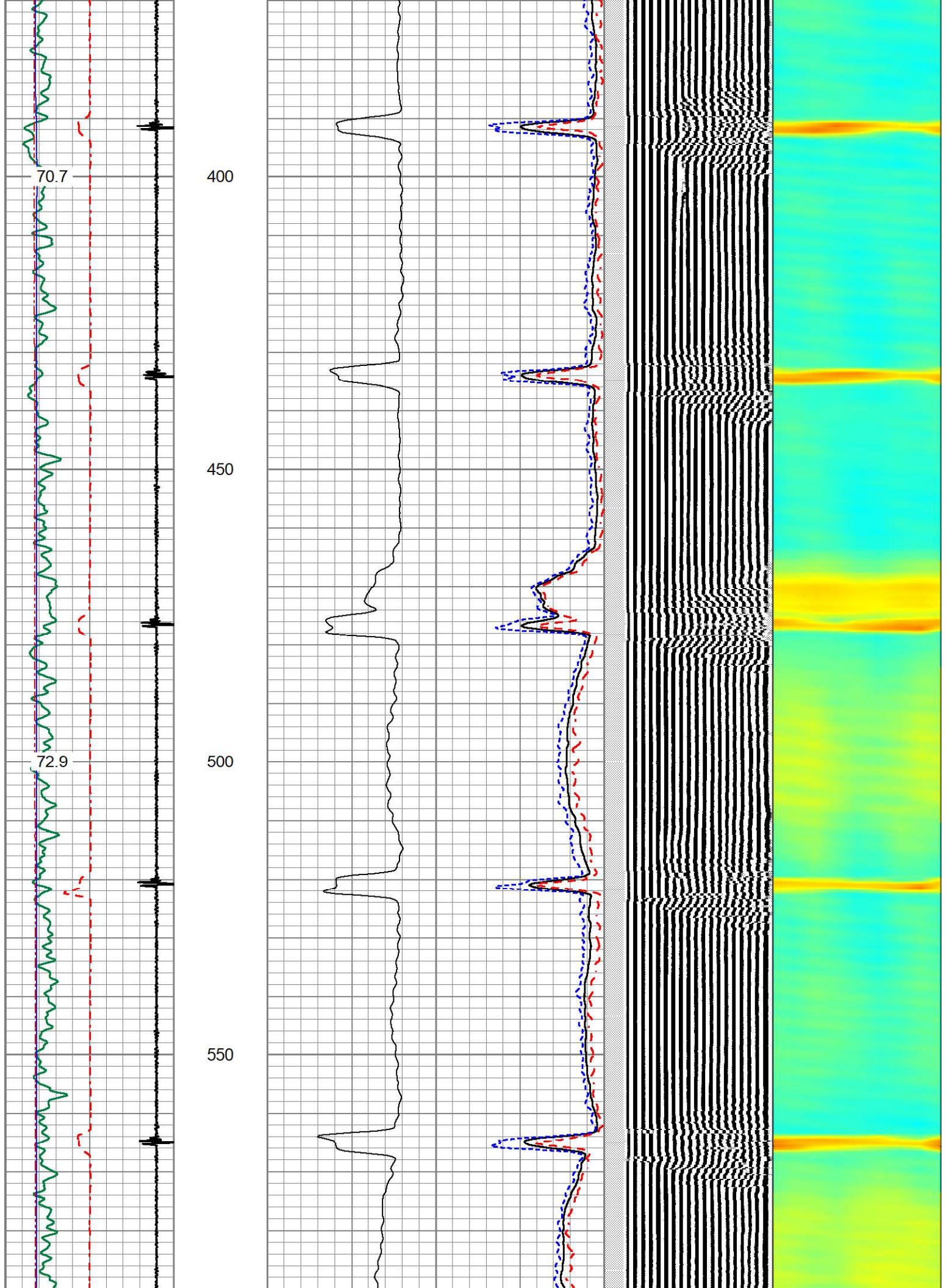
MAIN PASS

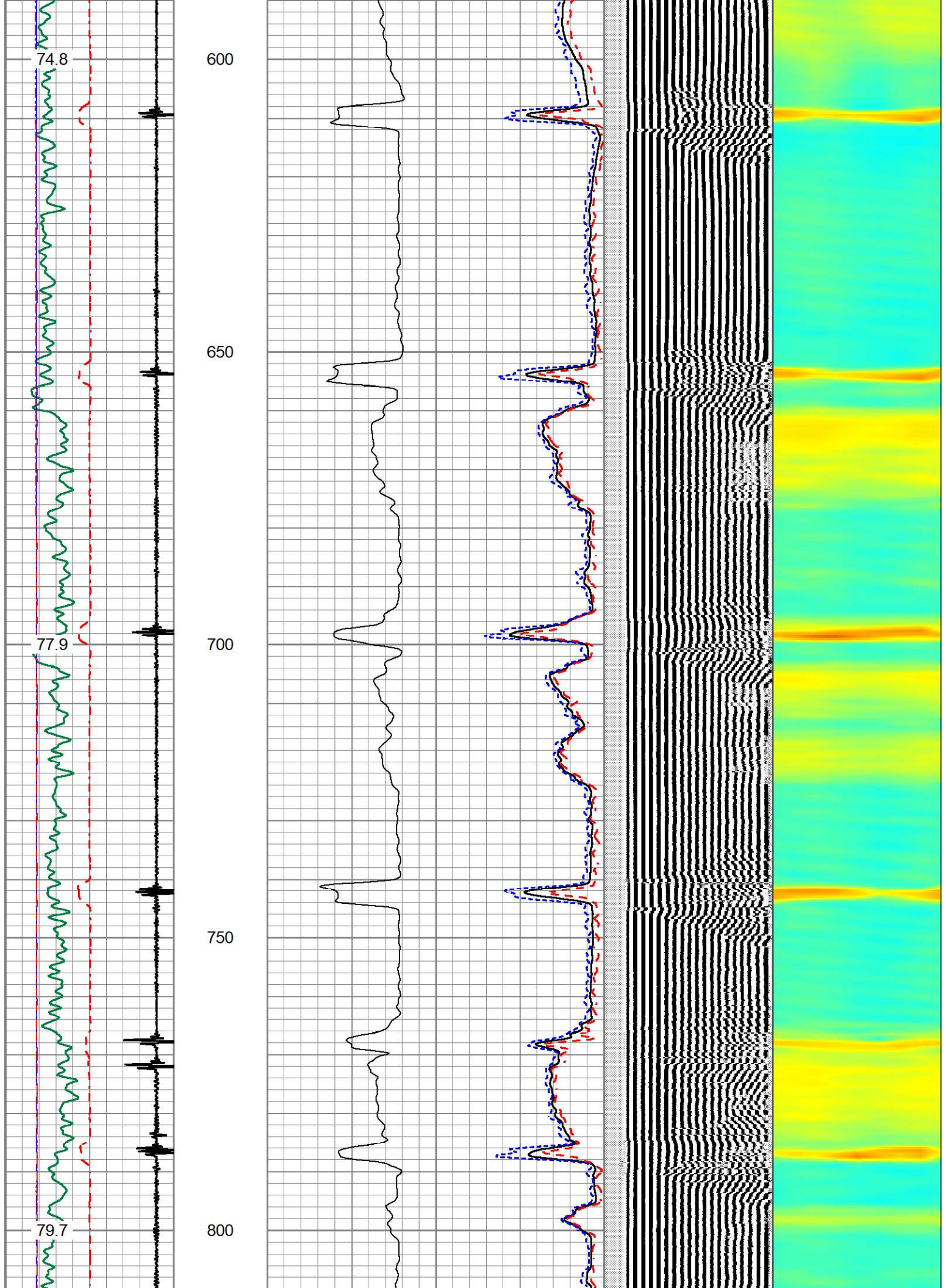
Database File oxy_dolores 7-32a_0512320802_20220228_scbl.db
 Dataset Pathname pass7.1
 Presentation Format 1patriotradii
 Dataset Creation Mon Feb 28 14:02:10 2022
 Charted by Depth in Feet scaled 1:240

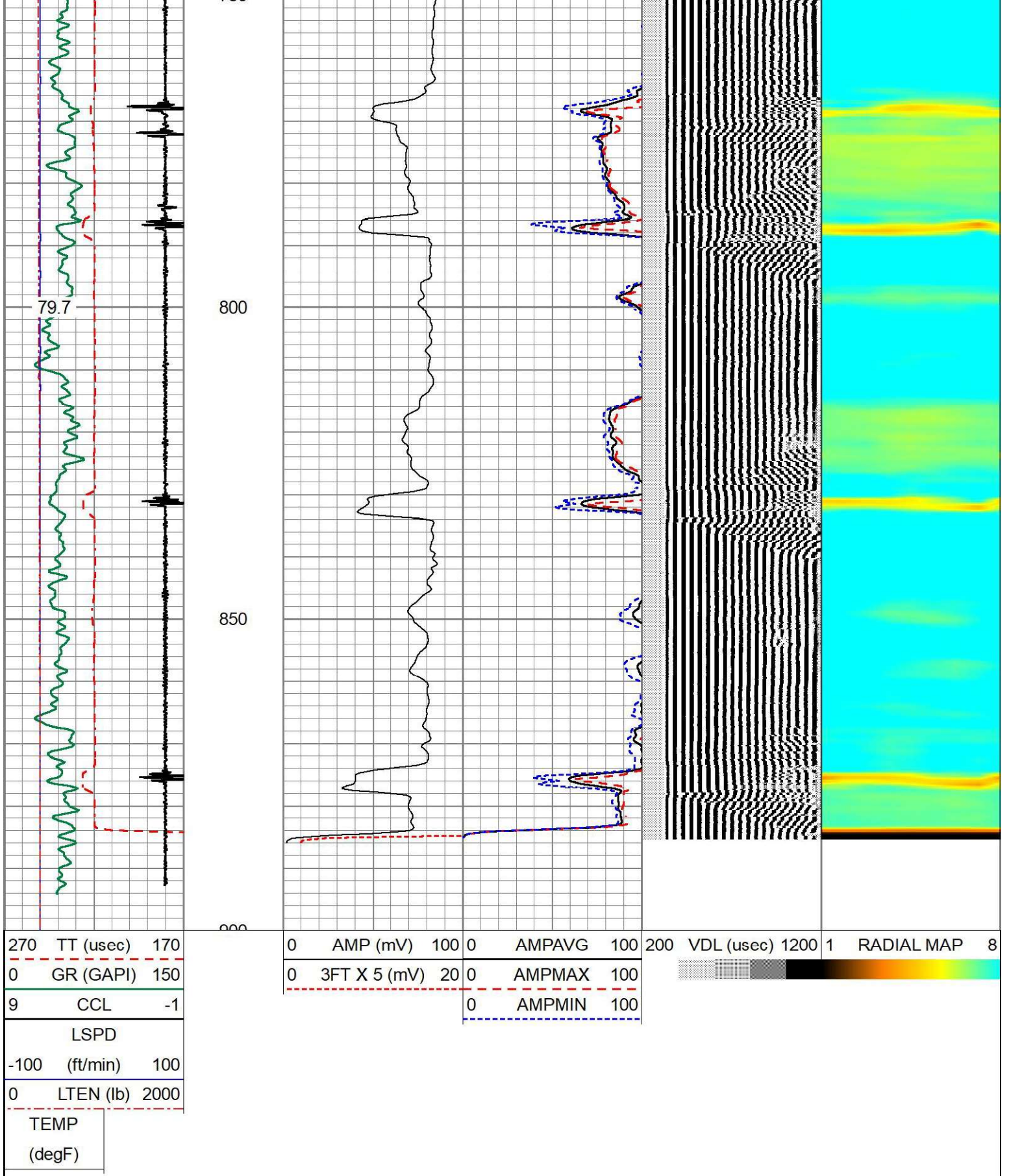
270 TT (usec) 170	0 AMP (mV) 100	0 AMPAVG 100	200 VDL (usec) 1200	1 RADIAL MAP 8
0 GR (GAPI) 150	0 3FT X 5 (mV) 20	0 AMPMAX 100		
9 CCL -1		0 AMPMIN 100		
LSPD				
-100 (ft/min) 100				
0 LTEN (lb) 2000				
TEMP				
(degF)				











Calibration Report

Database File oxy_dolores 7-32a_0512320802_20220228_scbl.db
 Dataset Pathname pass7.1
 Dataset Creation Mon Feb 28 14:02:10 2022

Gamma Ray Calibration Report

Serial Number: 0111
 Tool Model: Tek-Co 2 3/4
 Performed: Thu Oct 7 08:31:10 2021

 Calibrator Value: 0.7 GAPI

 Background Reading: 0.0 cps
 Calibrator Reading: 1.0 cps

 Sensitivity: 0.6700 GAPI/cps

Segmented Cement Bond Log Calibration Report

Serial Number: IBUCO04
 Tool Model: 275 Temp JS

 Calibration Casing Diameter: 4.500 in
 Calibration Depth: 768.230 ft

Master Calibration, performed (Derived):

	Raw (v)		Calibrated (mv)		Results	
	Zero	Cal	Zero	Cal	Gain	Offset
3'	-0.012	1.362	1.500	81.196	58.002	2.190
CAL	-0.007	1.028				
5'	-0.009	2.231	1.500	81.196	35.591	1.809
SUM						
S1	-0.002	1.457	0.000	100.000	68.558	0.127
S2	-0.005	1.468	0.000	100.000	67.854	0.357
S3	-0.018	1.391	0.000	100.000	70.984	1.261
S4	0.000	1.205	0.000	100.000	83.010	-0.007
S5	-0.014	1.088	0.000	100.000	90.726	1.290
S6	-0.003	1.090	0.000	100.000	91.508	0.241
S7	0.000	1.276	0.000	100.000	78.359	-0.007
S8	0.000	1.371	0.000	100.000	72.968	-0.007

Internal Reference Calibration, performed (Not Performed):

	Raw (v)		Calibrated (v)		Results	
	Zero	Cal	Zero	Cal	Gain	Offset
CAL	0.000	0.000	-0.007	1.028	1.000	0.000

Air Zero Calibration, performed Wed Jan 11 14:45:22 2017:

	Raw (v)		Calibrated (v)		Results	
	Zero		Zero		Gain	Offset
3'	0.000		0.000			0.000
5'	0.000		0.000			0.000
SUM						
S1	0.000		0.000			0.000
S2	0.000		0.000			0.000
S3	0.000		0.000			0.000
S4	0.000		0.000			0.000
S5	0.000		0.000			0.000
S6	0.000		0.000			0.000
S7	0.000		0.000			0.000
S8	0.000		0.000			0.000

Temperature Calibration Report

Serial Number: IBUCO04
Tool Model: 275 Temp JS
Performed: Thu Jan 5 17:25:52 2017

	Reference		Reading
Low Reference:	0.00	degF	0.00 usec
High Reference:	1.00	degF	1.00 usec
Gain:	0.33		
Offset:	0.00		
Delta Spacing	1		



Company	OCCIDENTAL PETROLEUM CORPORATION	
Well	DOLORES 7-32A	
Field	WATTENBERG	
County	WELD	
State	COLORADO	Country USA