



1:240

MD Log

LWD
Resistivity

Country : **USA**
Field : **Wattenberg**
Location : **40.350544**
 : **-104.36604**
Well : **State Antelope O24-K21-**
Company : **Bonanza Creek Energy**
Rig : **140**

Company : **Bonanza Creek Energy**
Rig : **140**
Well : **State Antelope O24-K21-31HNC**
Field : **Wattenberg**
County/Parish : **Weld**
State/Province : **Colorado**
Country : **USA**
Well ID : **05-123-51159**

LOCATION

Latitude : **40.350544**
Longitude : **-104.36604**
Kersey

Sect: **31** Twp: **5N** Range: **62W**

Other Services:

Permanent Datum : **NAD1983** Elevation: **4552**
Log Measured From : **4576**

Elev. KB : **24**
DF : **4576**
GLWD : **4552**

Depth Logged : **0** to : **5750**
Date Logged : **2/12/22** to : **2/14/22**
Total Depth MD : **5750.00** TVD : **5634.3**
Spud Date : **2/12/22**

FINAL PRINT

Job Number:
STATE ANTELOPE O24-K12-

Borehole Record (MD)				Borehole Record (MD)			
Run	Size	From	To	Run	Size	From	To
1 2	13 1/2 8 1/2	0 1695	1695 11969				
				Casing Record (MD)			
	Size				Weight		To
	9 5/8						

--	--	--	--	--	--

EQUIPMENT					
-----------	--	--	--	--	--

Log Run	1				
Bit Run	1				
Start Date/Time	2022-02-11 20:53:17				
Start Depth (ft)	28.37				
End Date/Time	2022-02-14 08:00:01				
End Depth (ft)	5750				

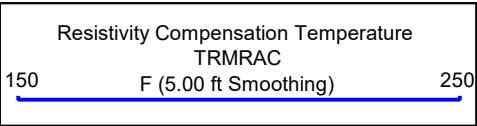
Serial Numbers					
----------------	--	--	--	--	--

Surface Gear	N/A				
Flow Sub	N/A				
Pulser	N/A				
Battery 1					
Battery 2					
Turbine Alternator	N/A				
Directional Sensor	N/A				
Gamma Sensor	N/A				
WPR Sensor	760				
Vibration Sensor					

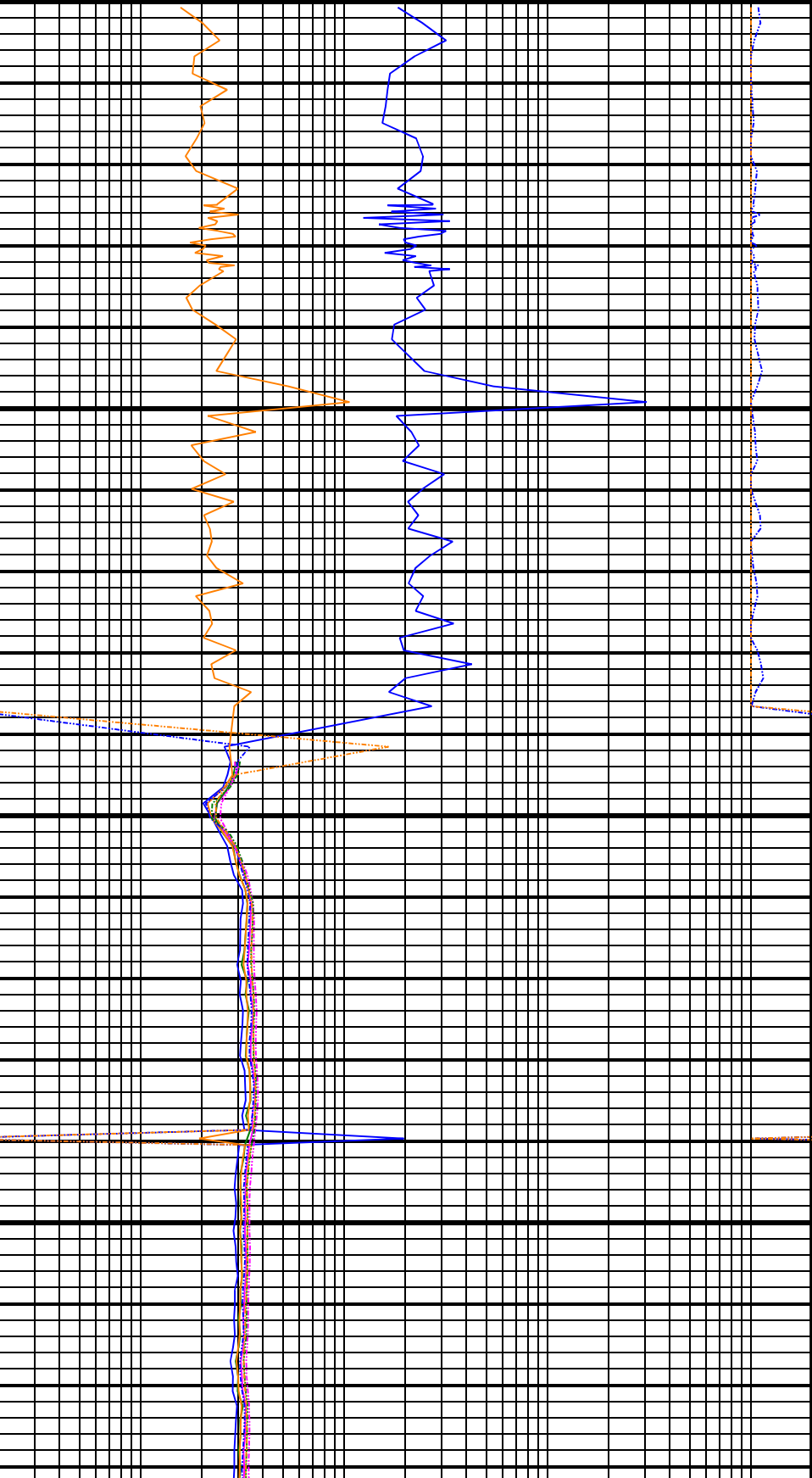
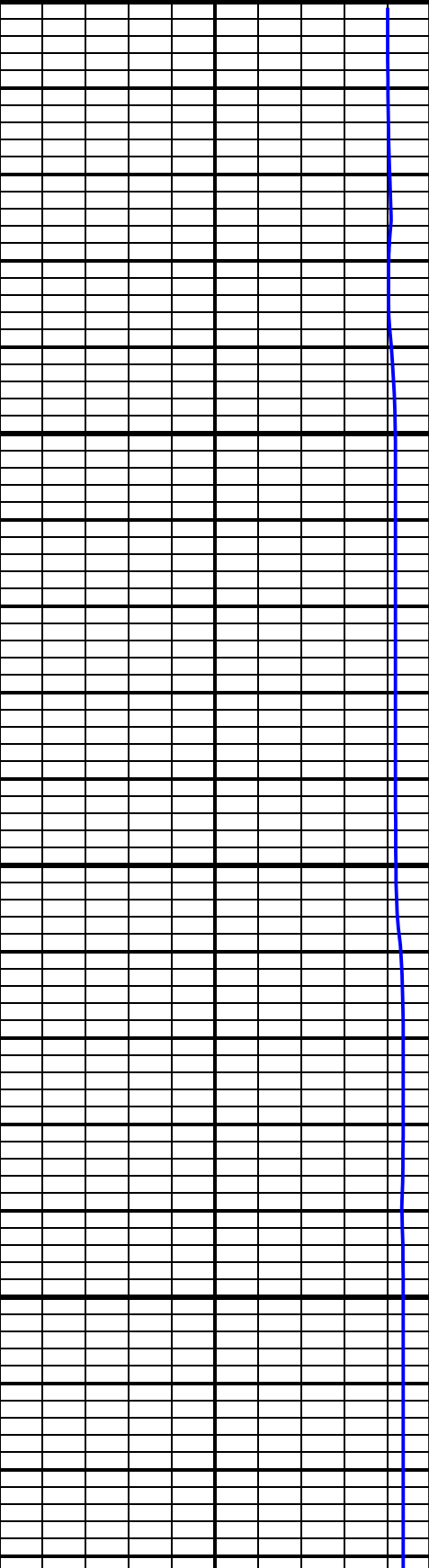
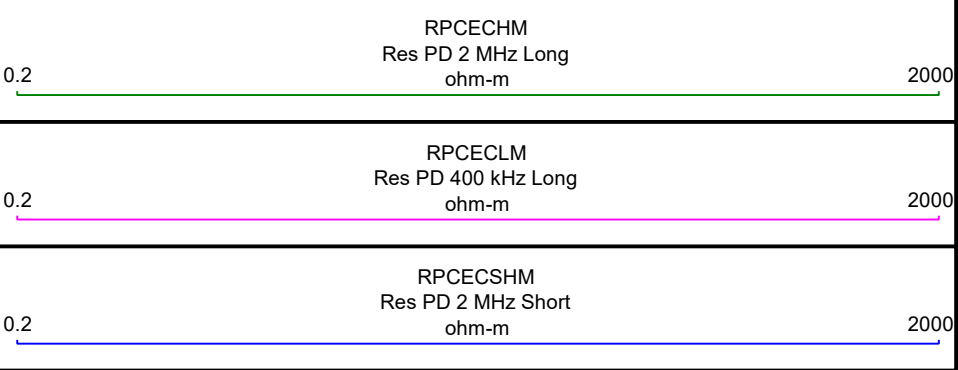
Sensor Offsets To Bit					
-----------------------	--	--	--	--	--

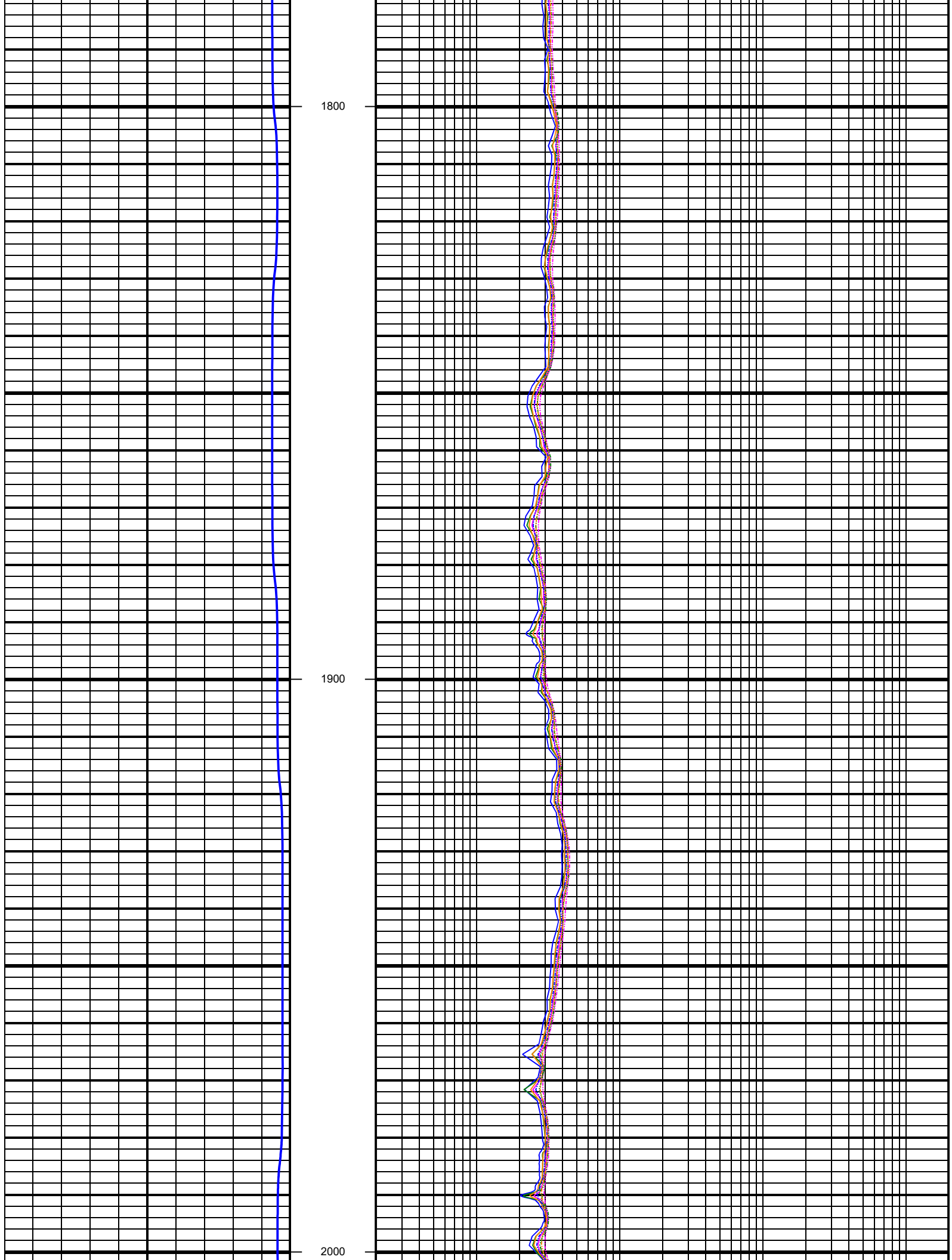
Directional (ft)					
Gamma Ray (ft)					
WPR (ft)	6224.71				
PWD (ft)					
Vibration (ft)					

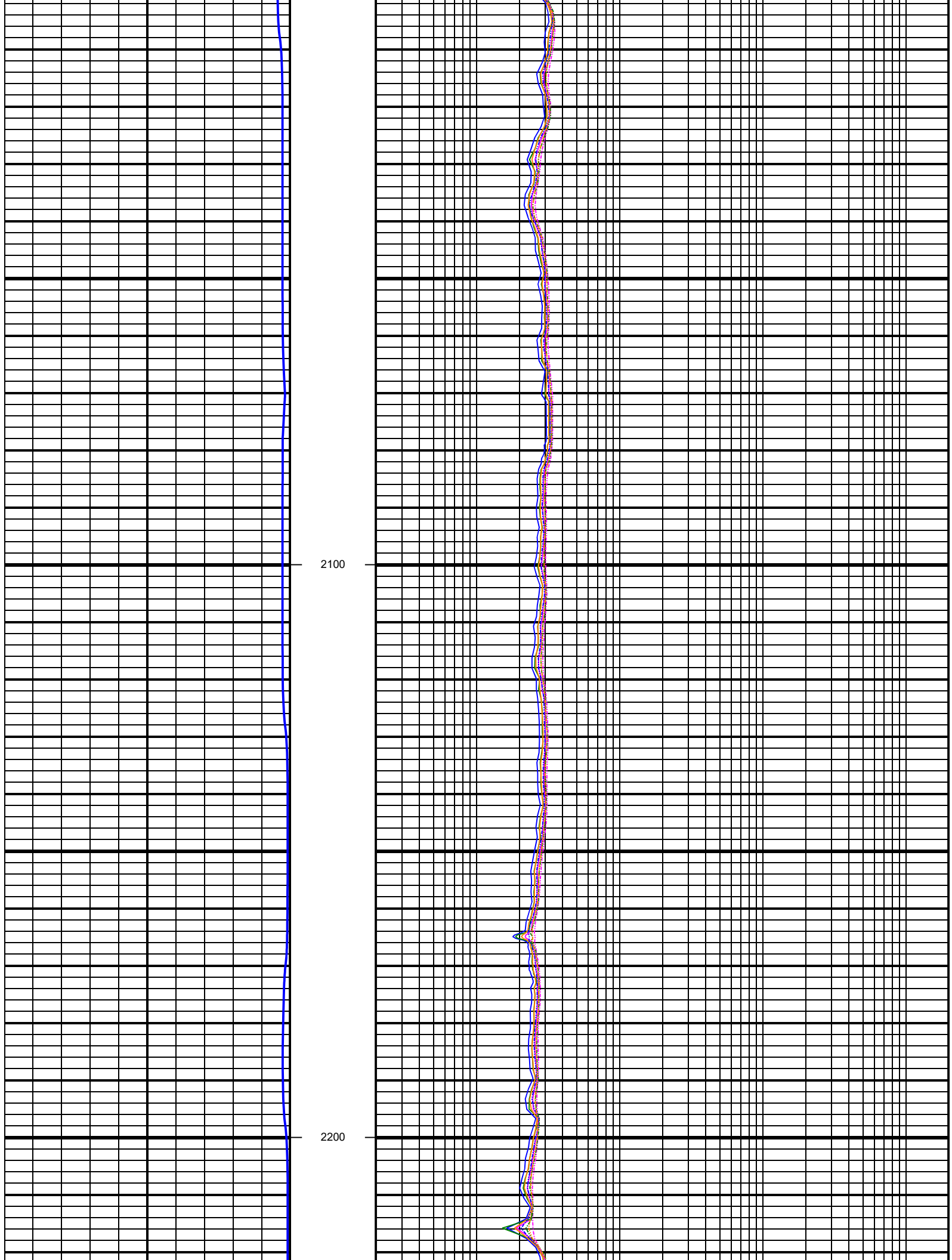
0.2	RACECSLM Res Att 400 kHz Short ohm-m	2000
0.2	RACECHM Res Att 2 MHz Long ohm-m	2000
0.2	RACECLM Res Att 400 kHz Long ohm-m	2000
0.2	RACECSHM Res Att 2 MHz Short ohm-m	2000
0.2	RPCECSLM Res PD 400 kHz Short ohm-m	2000

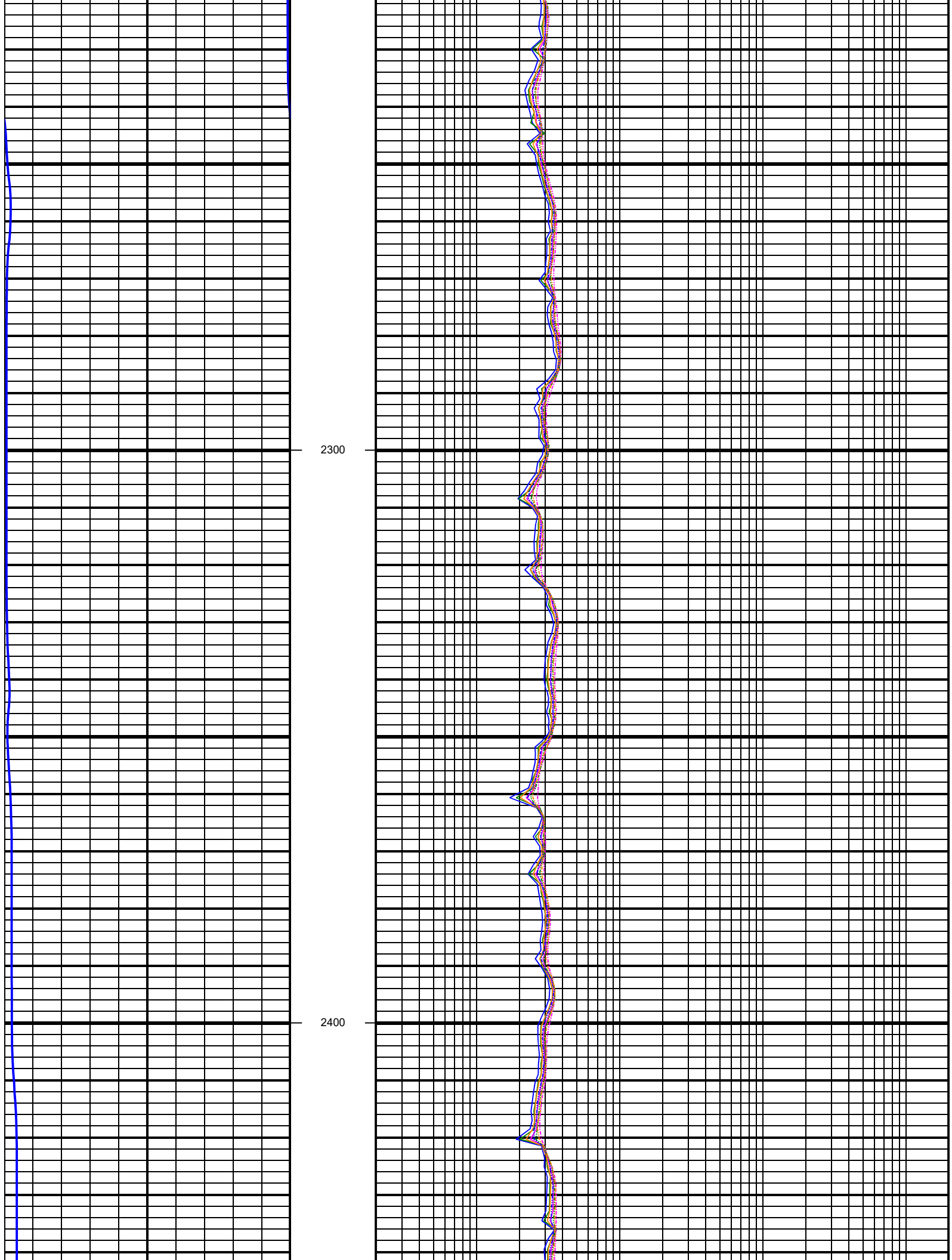


MD
FEET
1:240

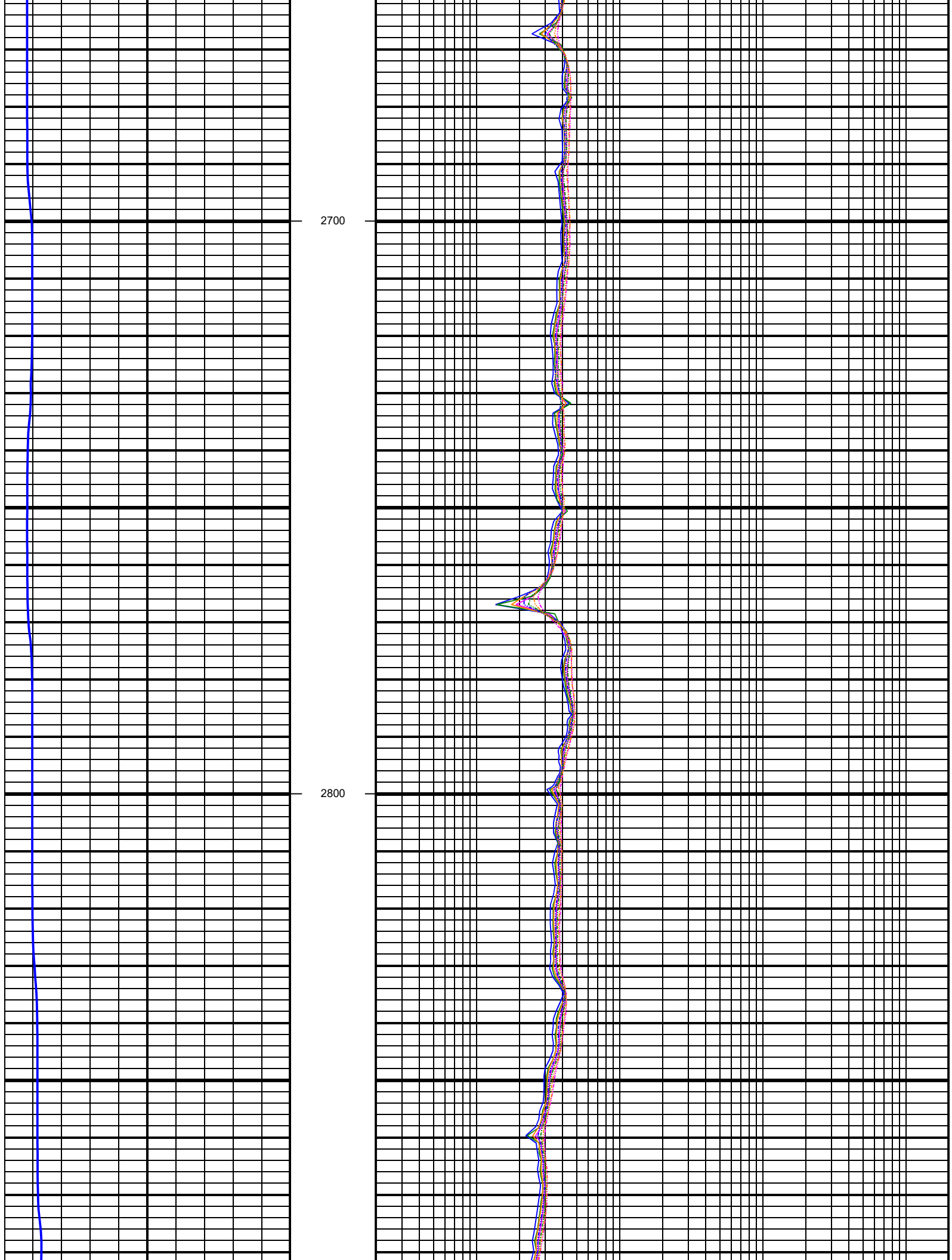


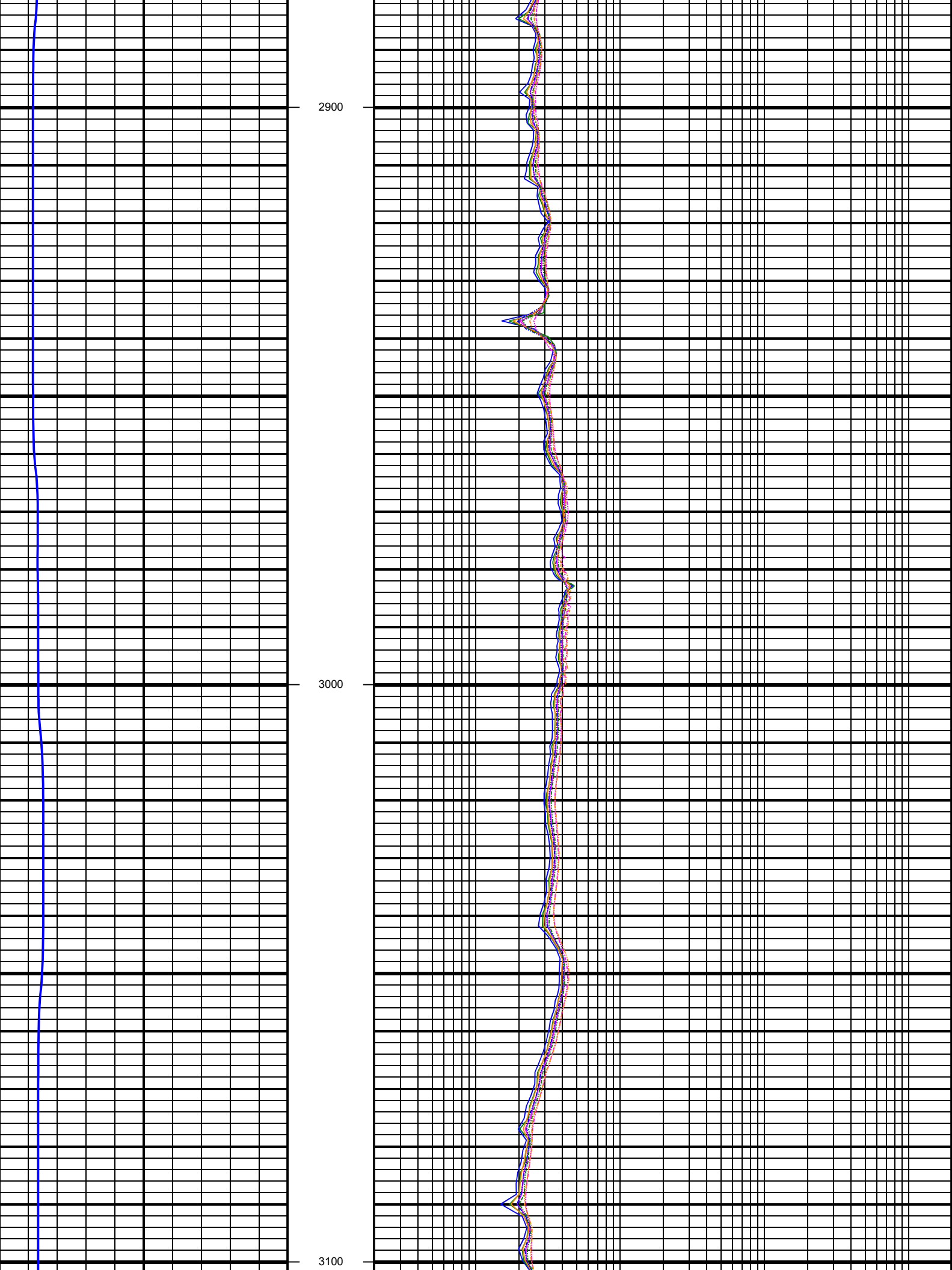


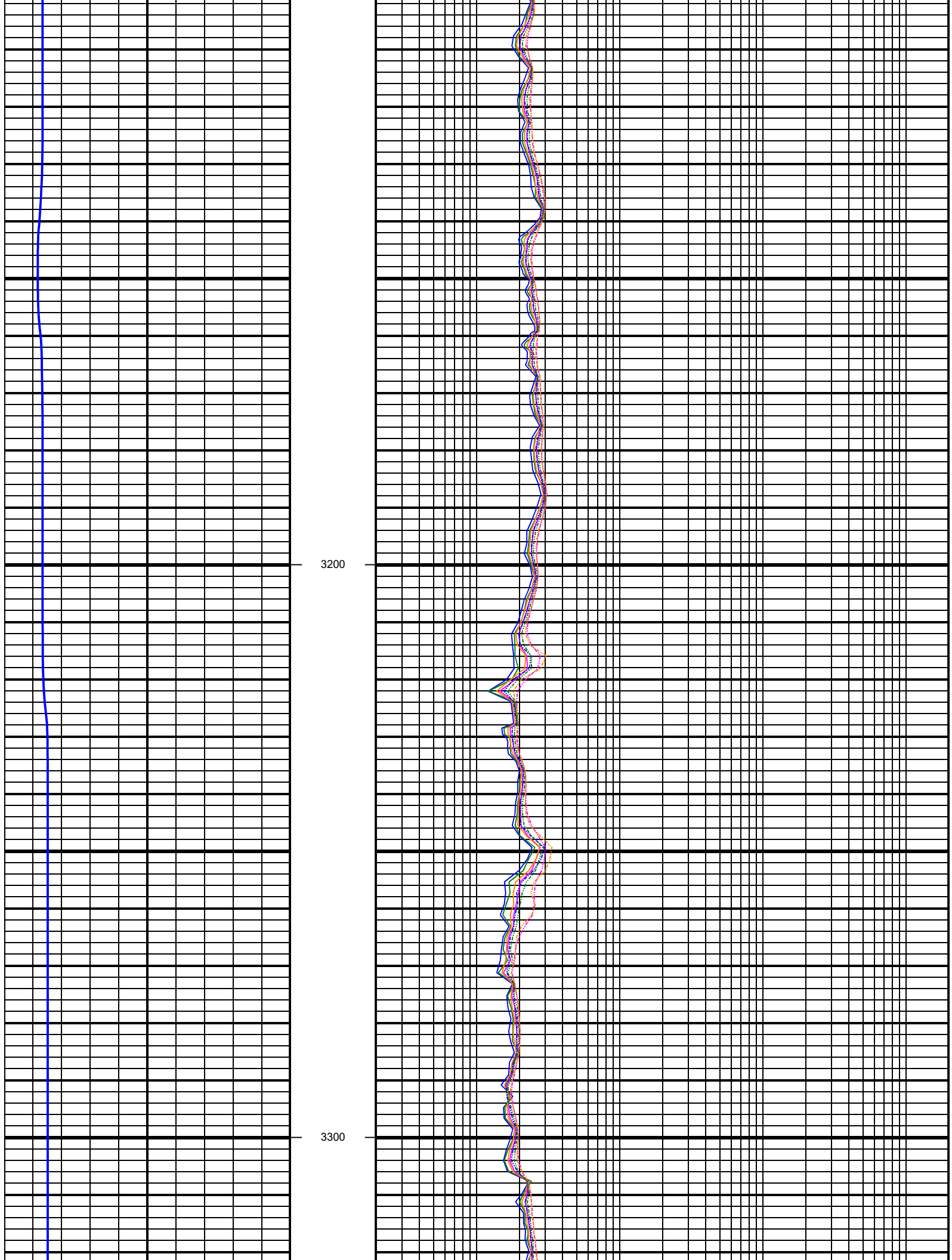


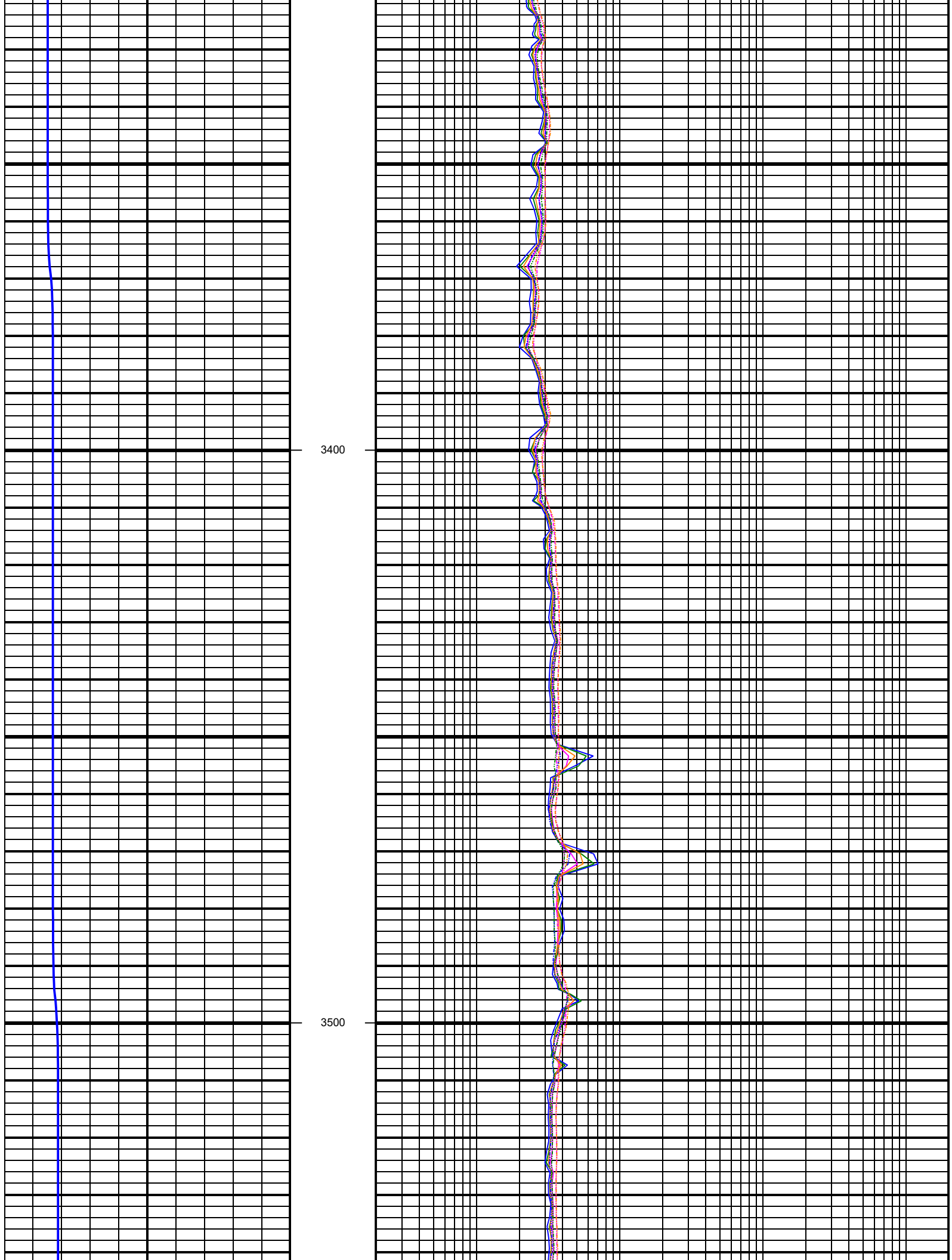


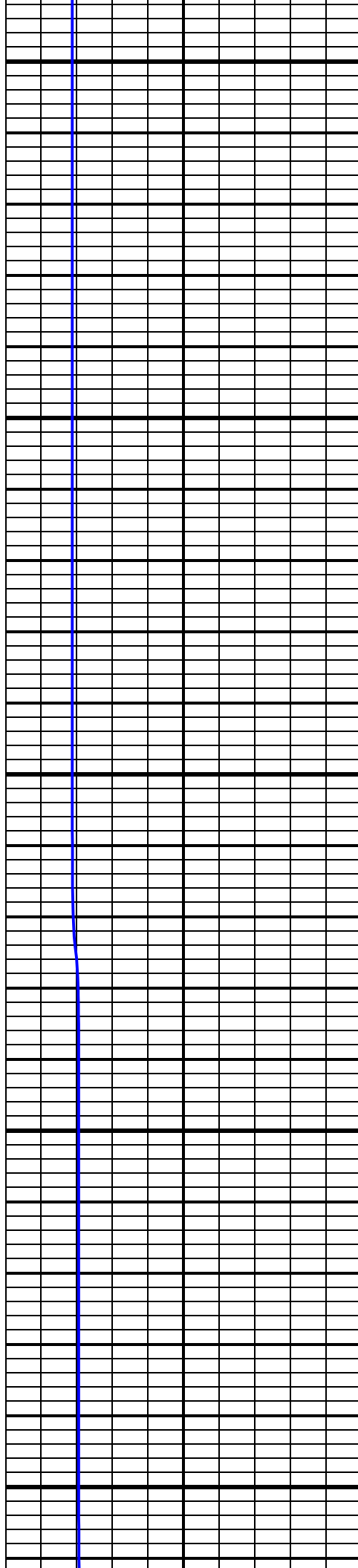






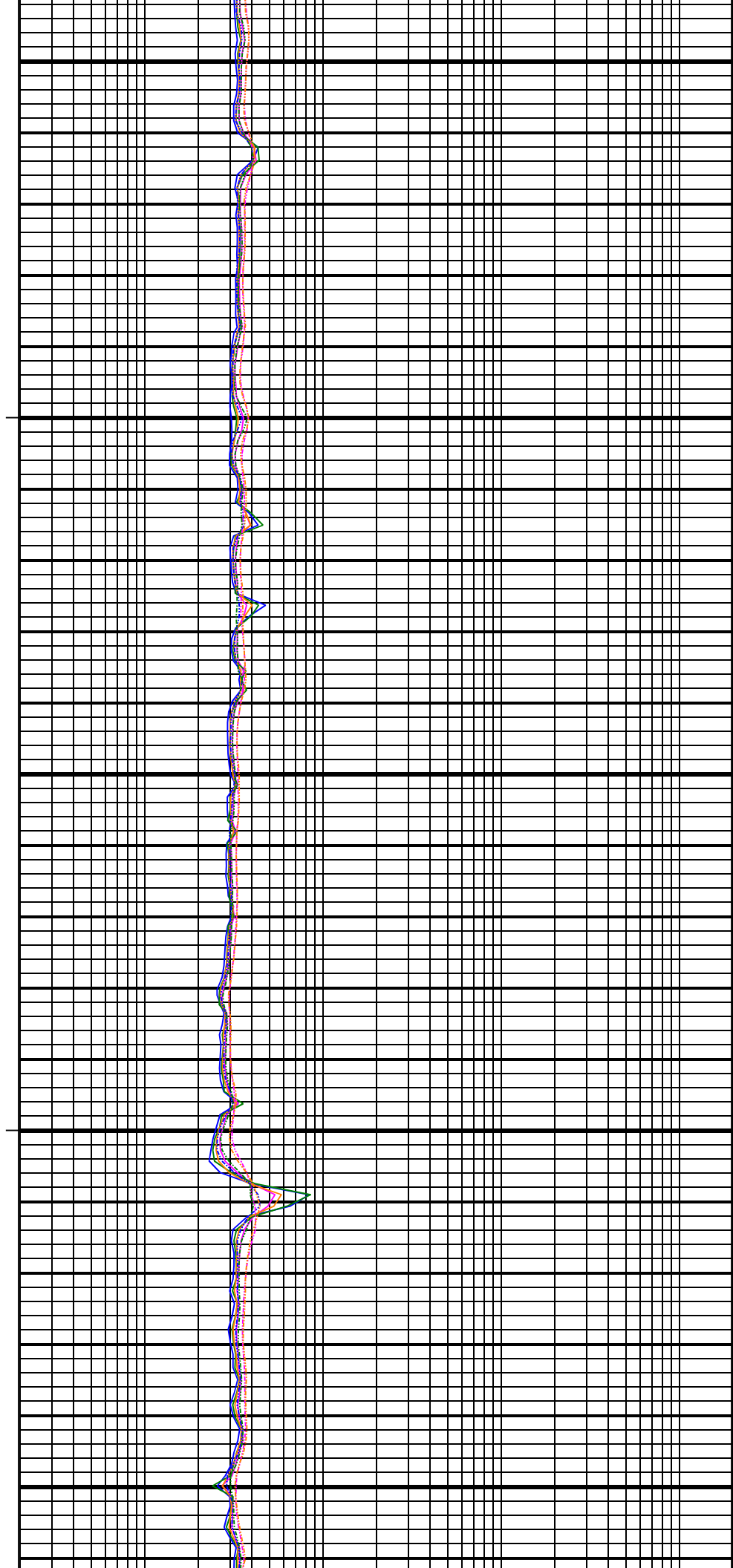


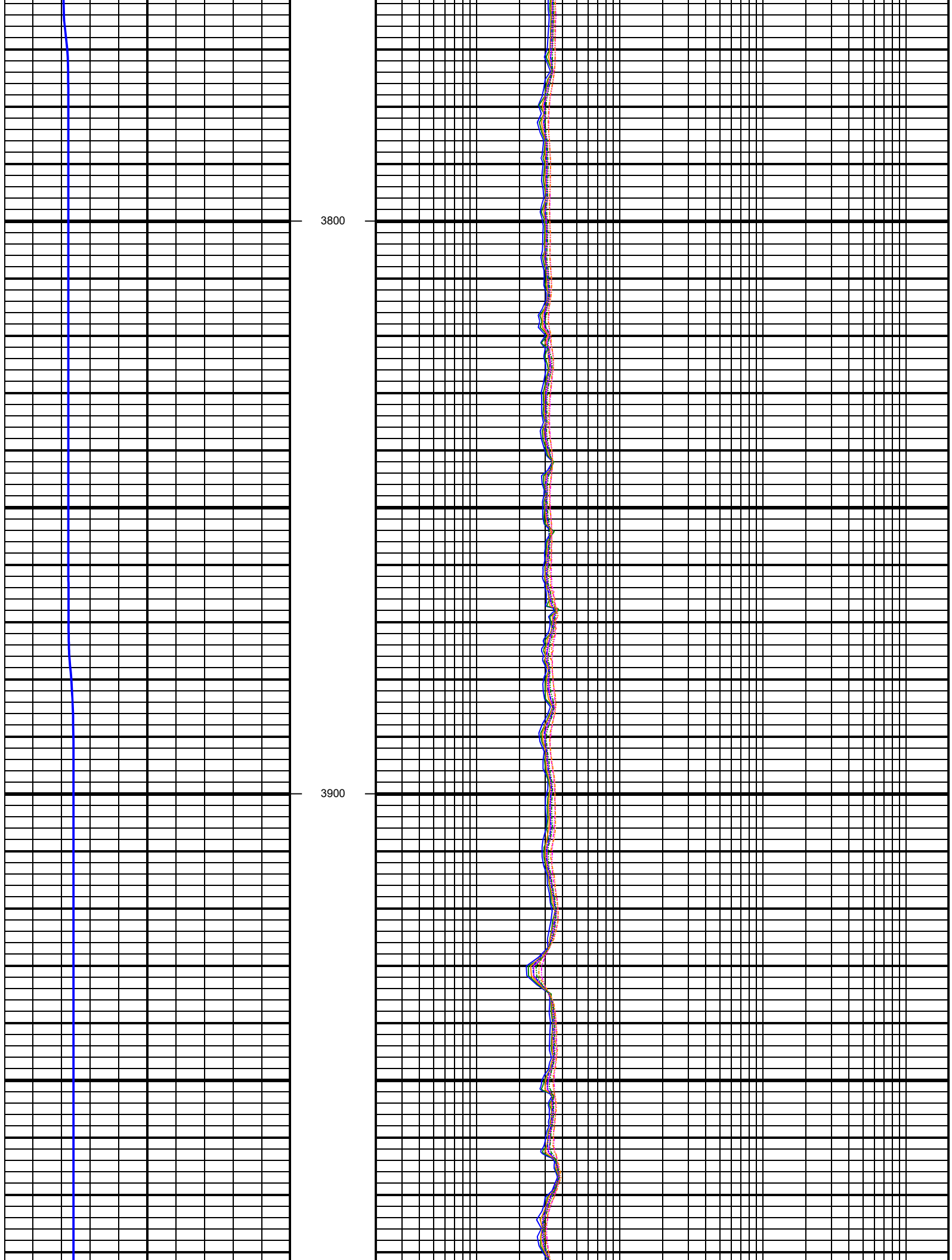


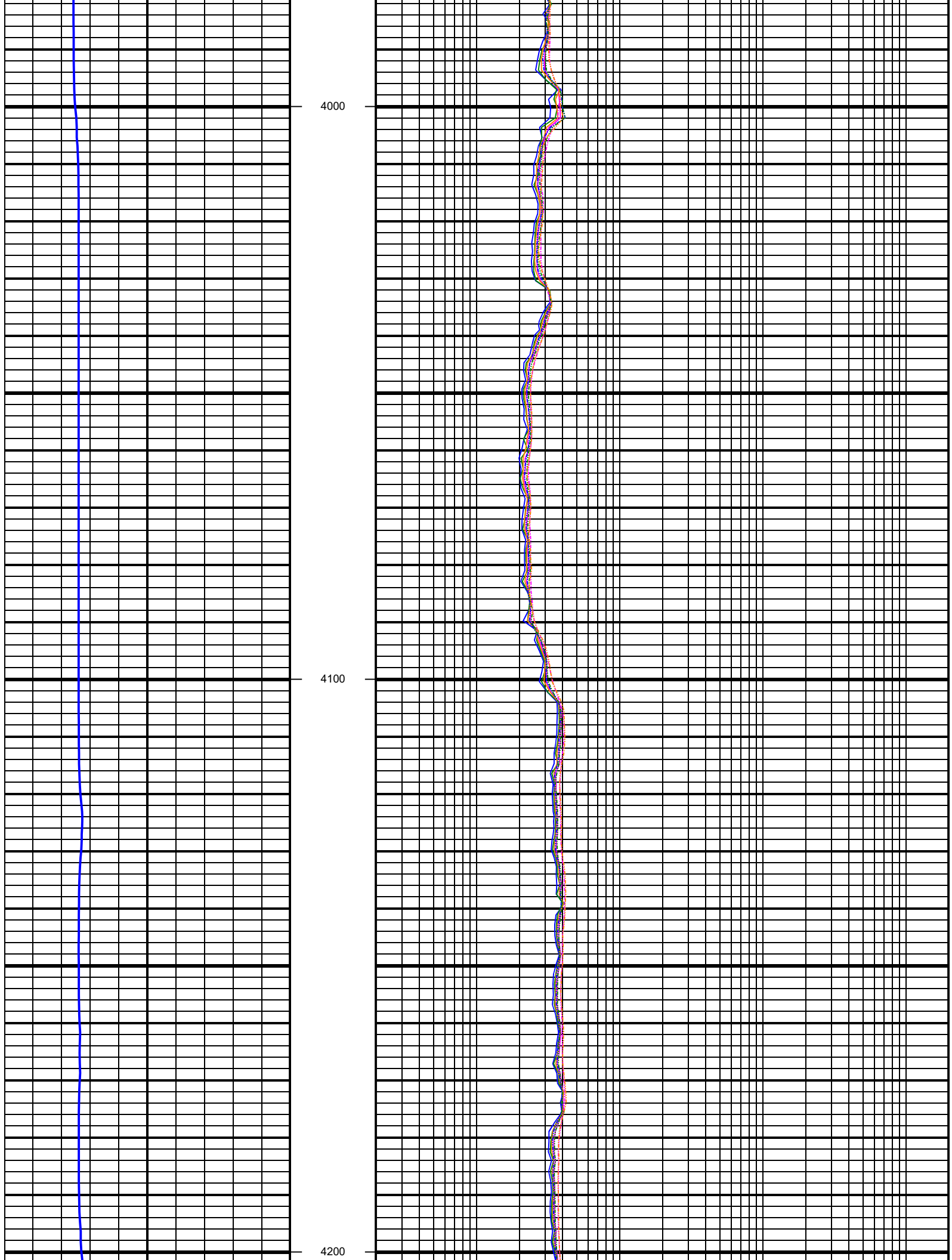


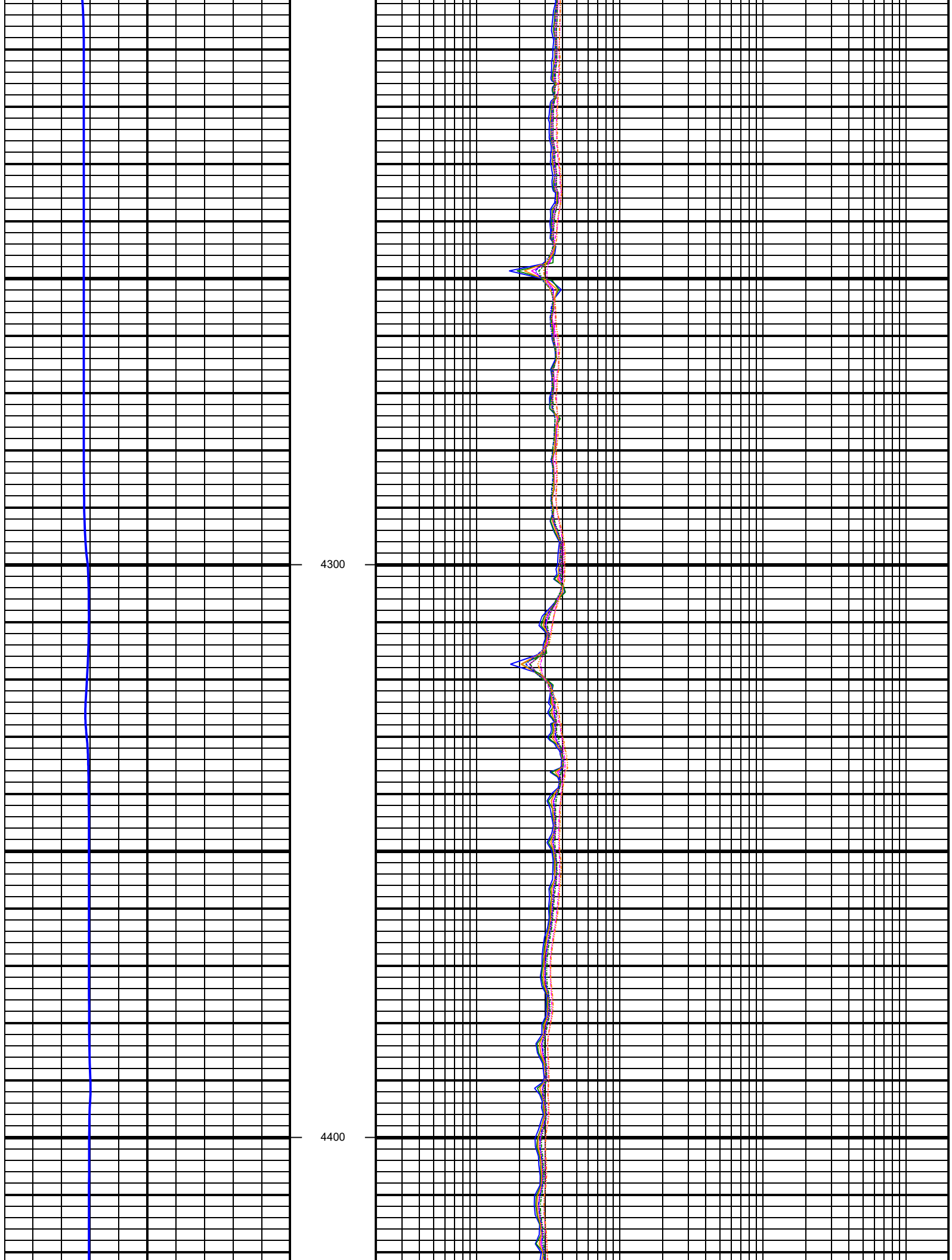
3600

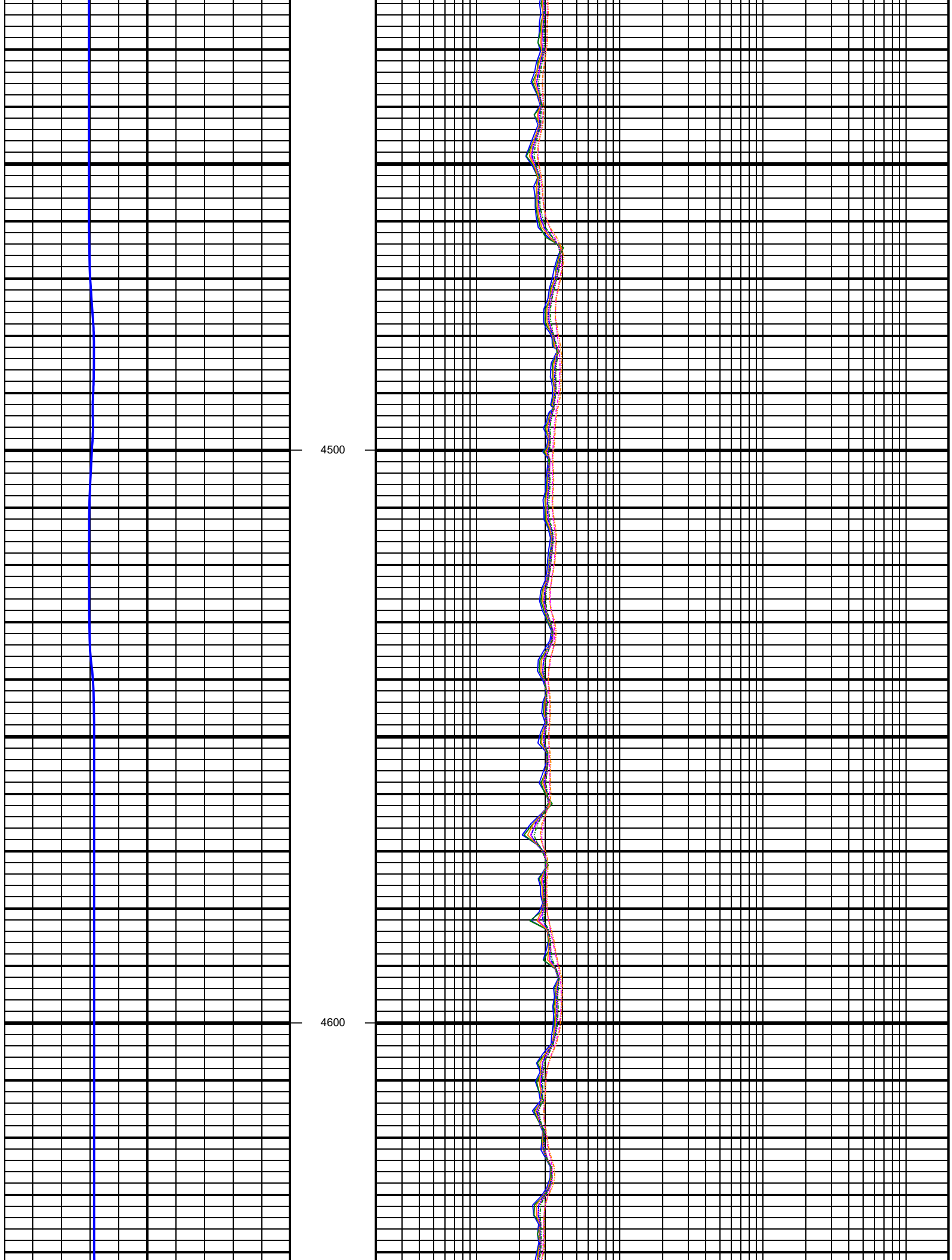
3700

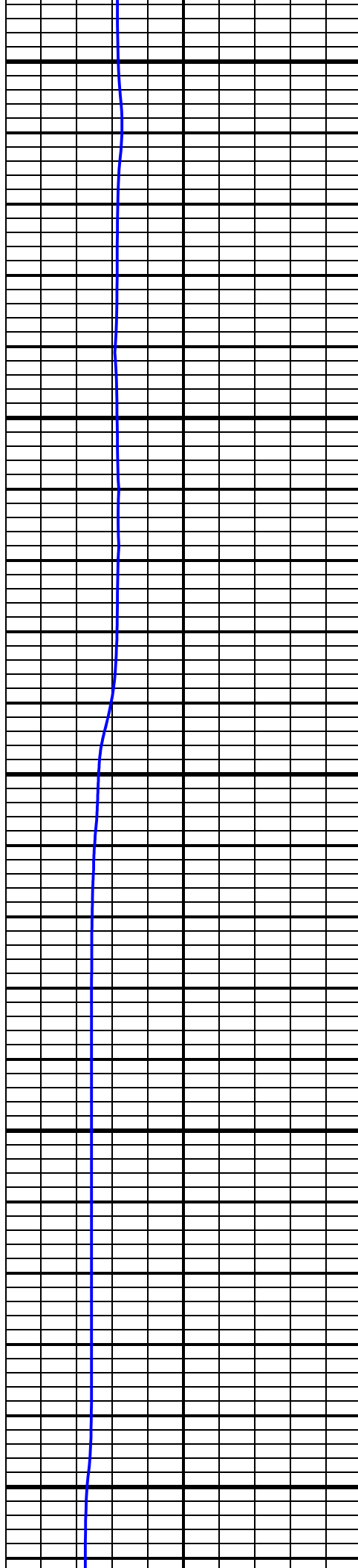






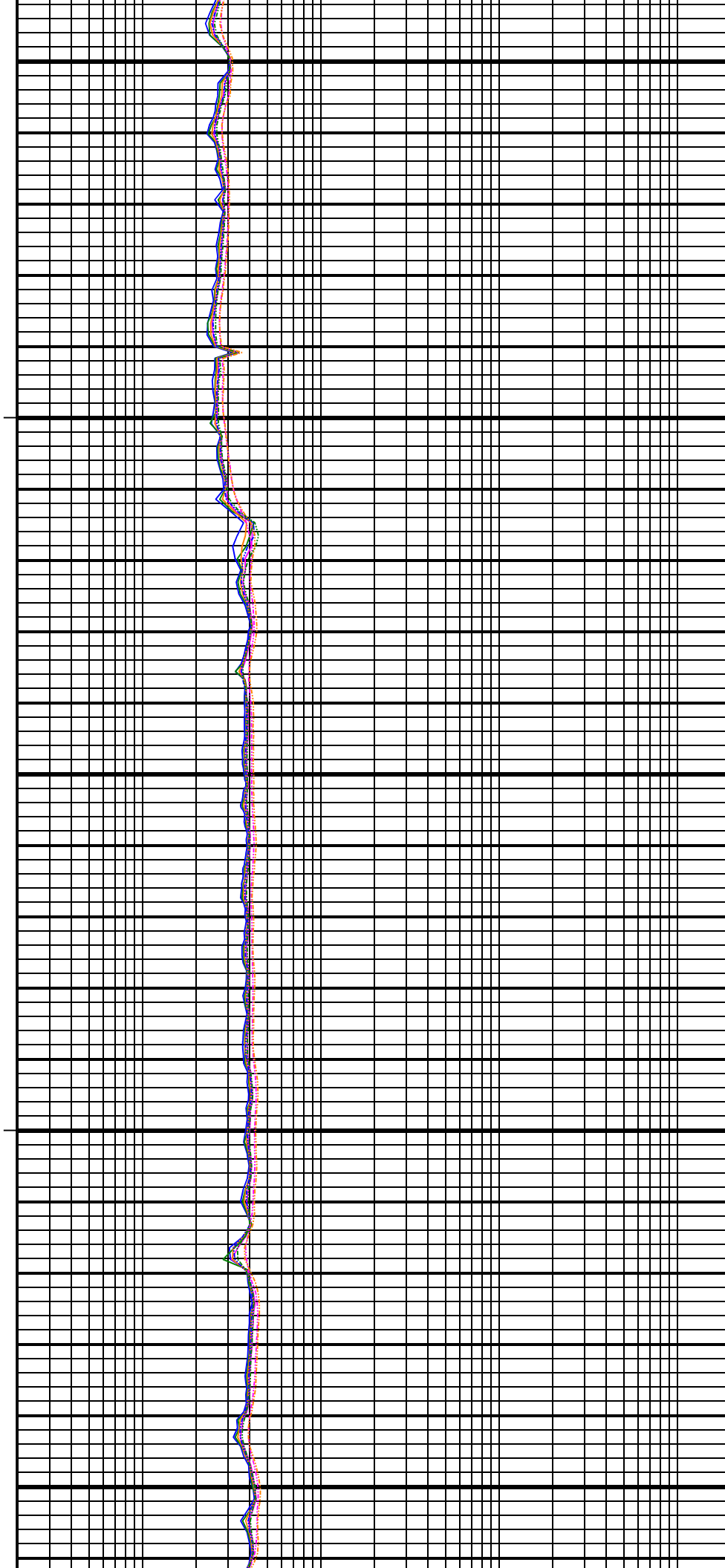


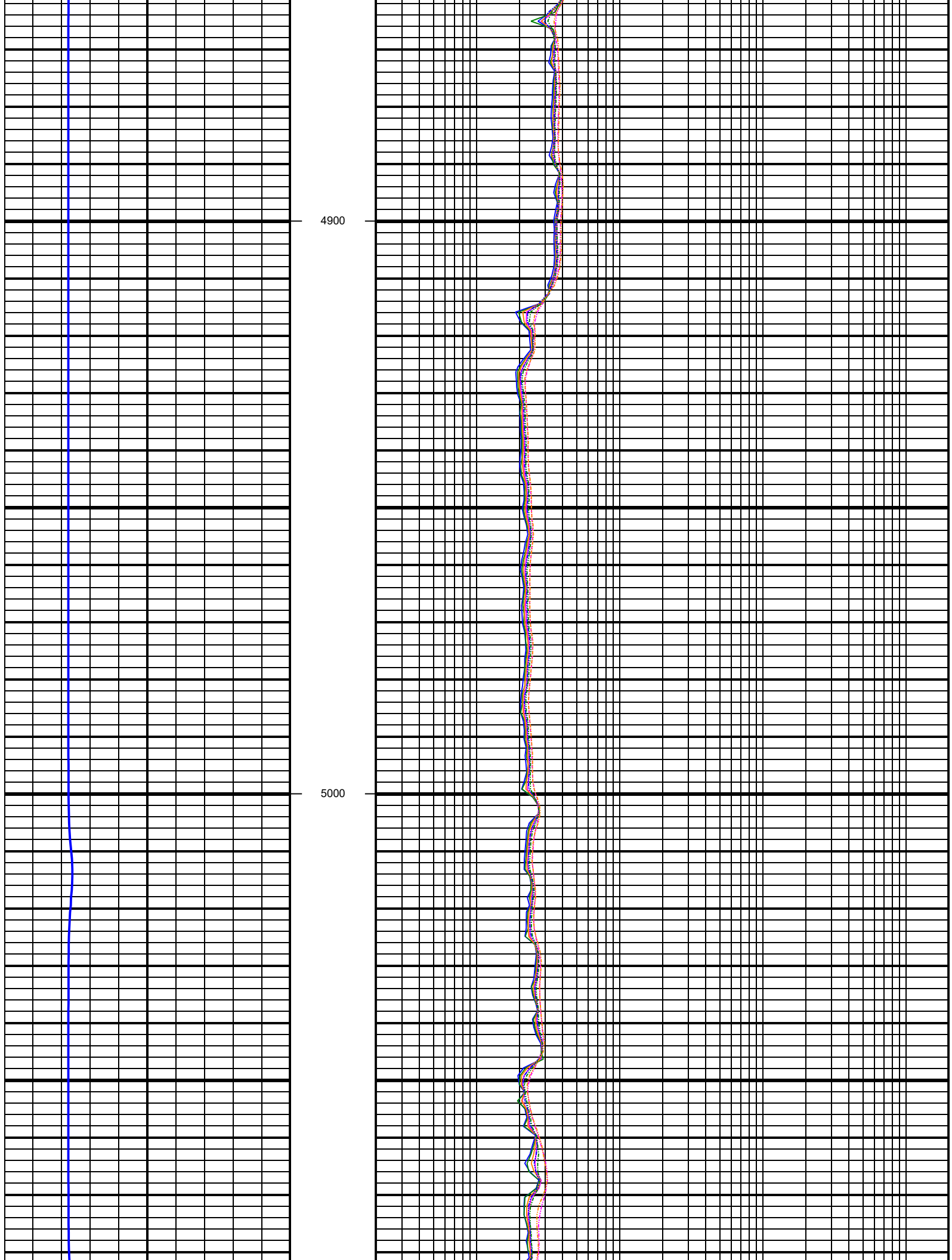


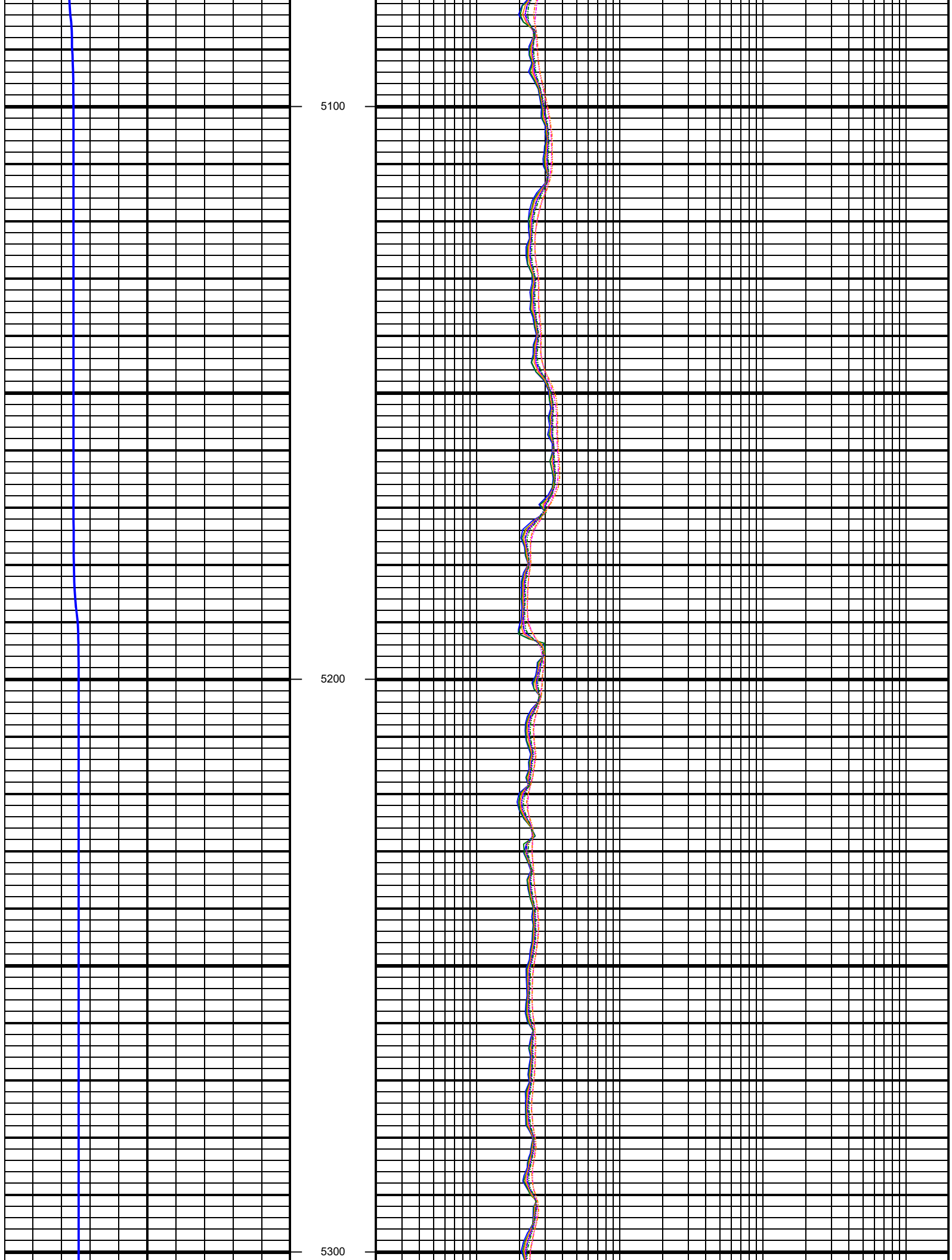


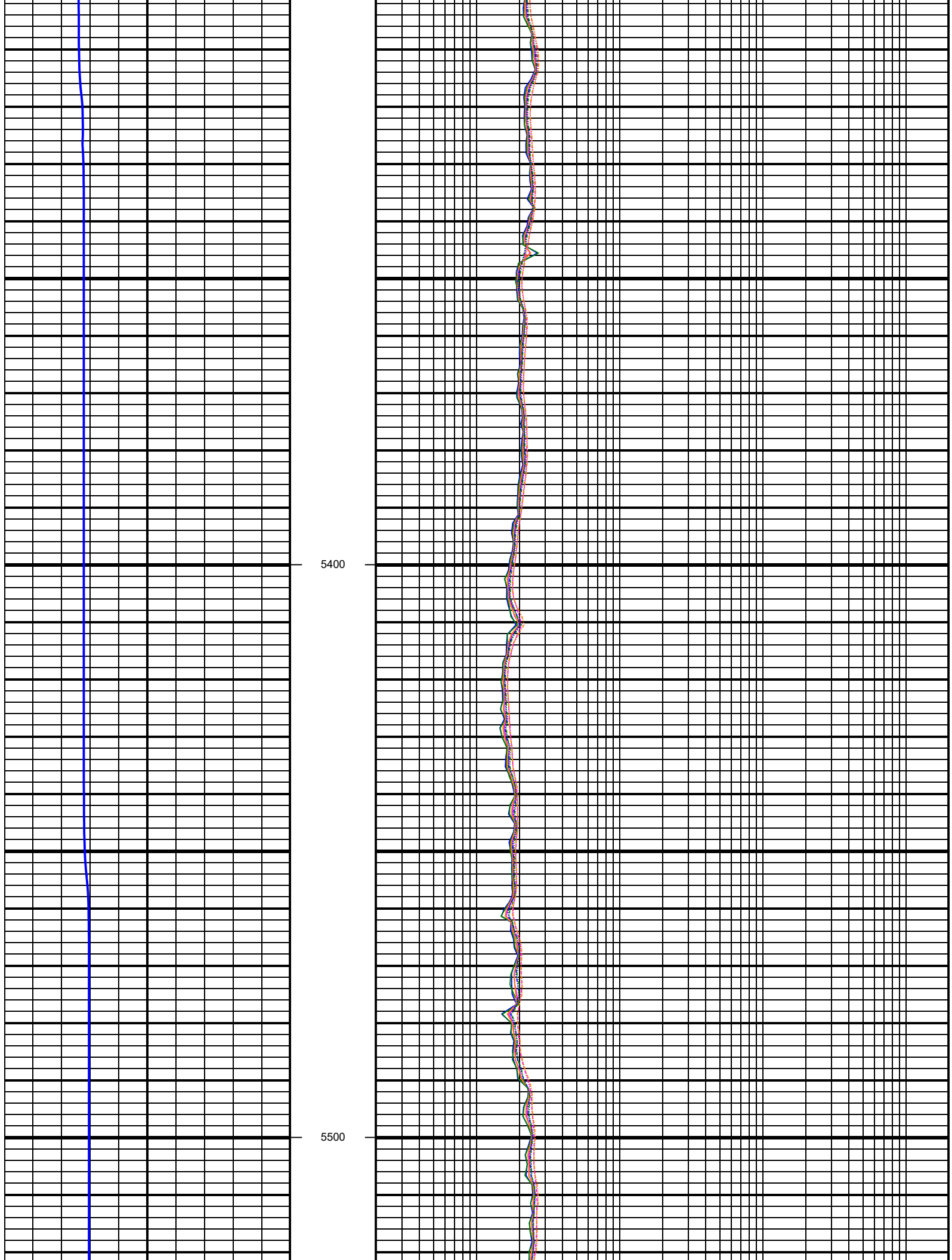
4700

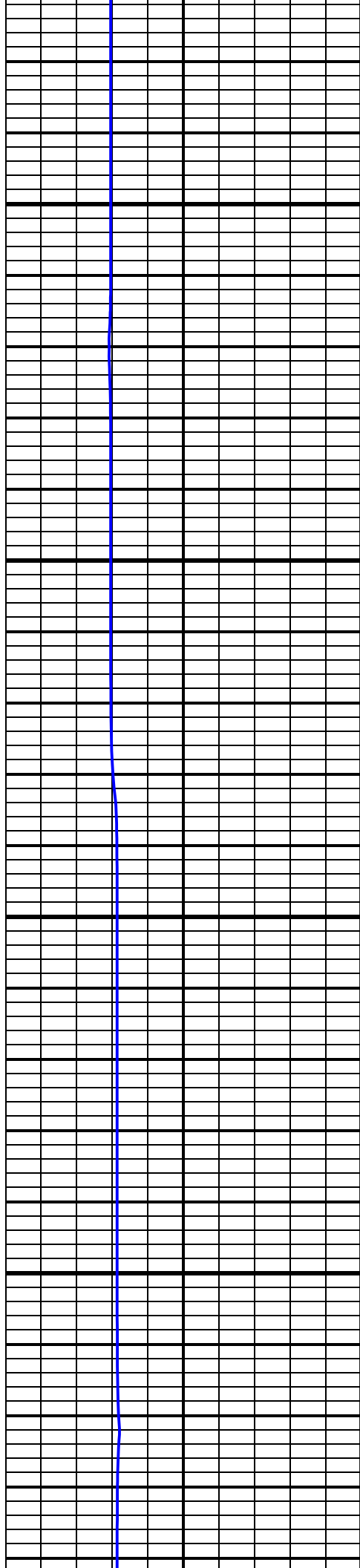
4800





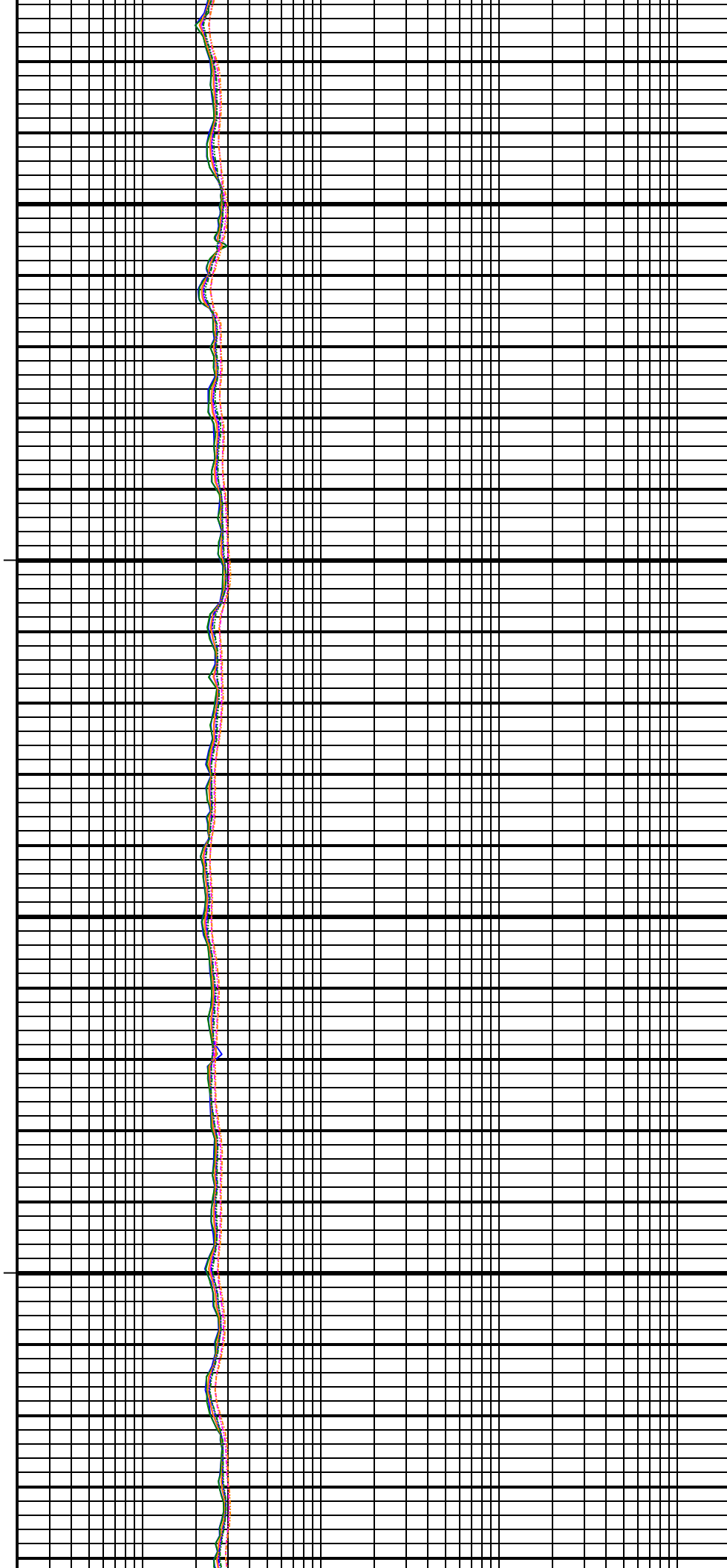


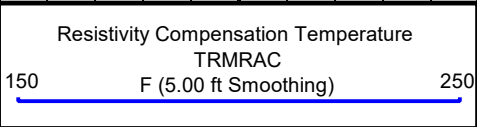
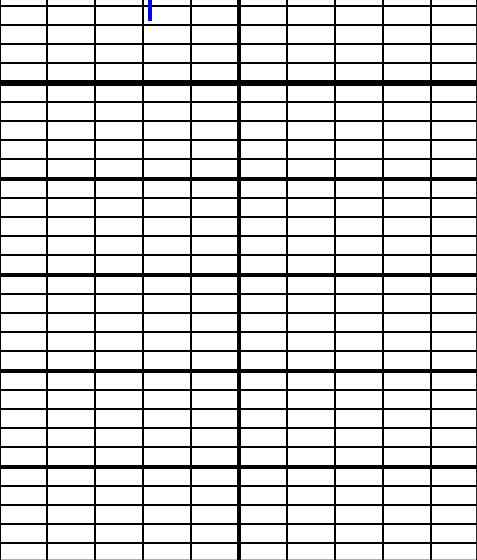




5600

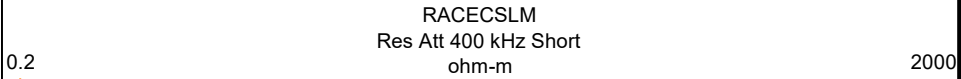
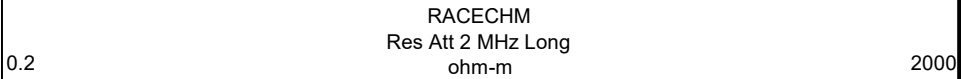
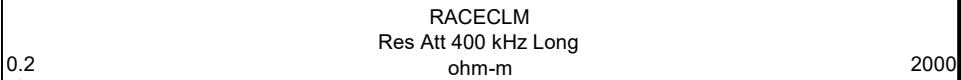
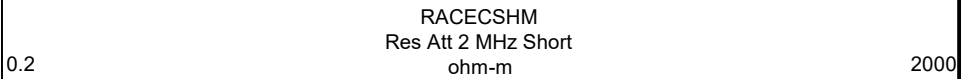
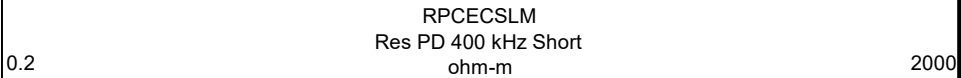
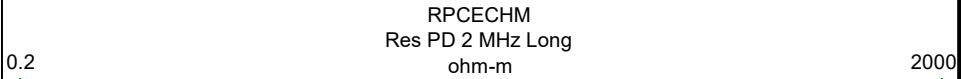
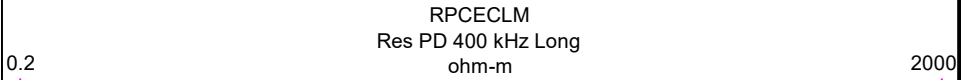
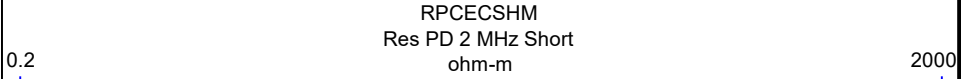
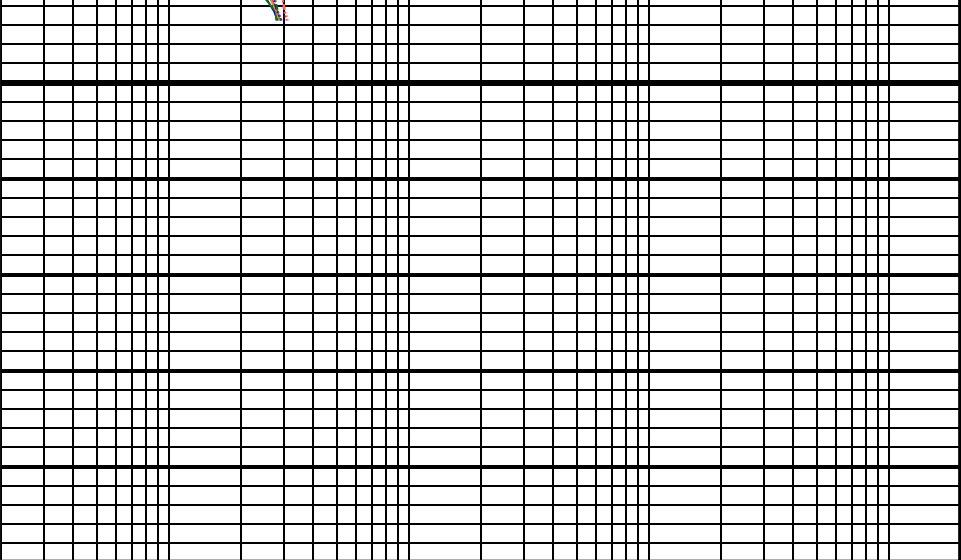
5700





5800

1:240
FEET
MD



DISCLAIMER

ALTITUDE ENERGY PARTNERS DOES NOT GUARANTEE THE ACCURACY OR CORRECTNESS OF INTERPRETATIONS PROVIDED IN OR FROM THIS LOG. SINCE ALL INTERPRETATIONS ARE OPINIONS BASED ON MEASUREMENTS ALTITUDE ENERGY PARTNERS SHALL UNDER NO CIRCUMSTANCES BE RESPONSIBLE FOR CONSEQUENTIAL DAMAGES OR ANY OTHER LOSS, COSTS OR EXPENSES INCURRED OR SUSTAINED IN CONNECTION WITH THE USE OF ANY SUCH INTERPRETATIONS.

