
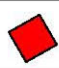
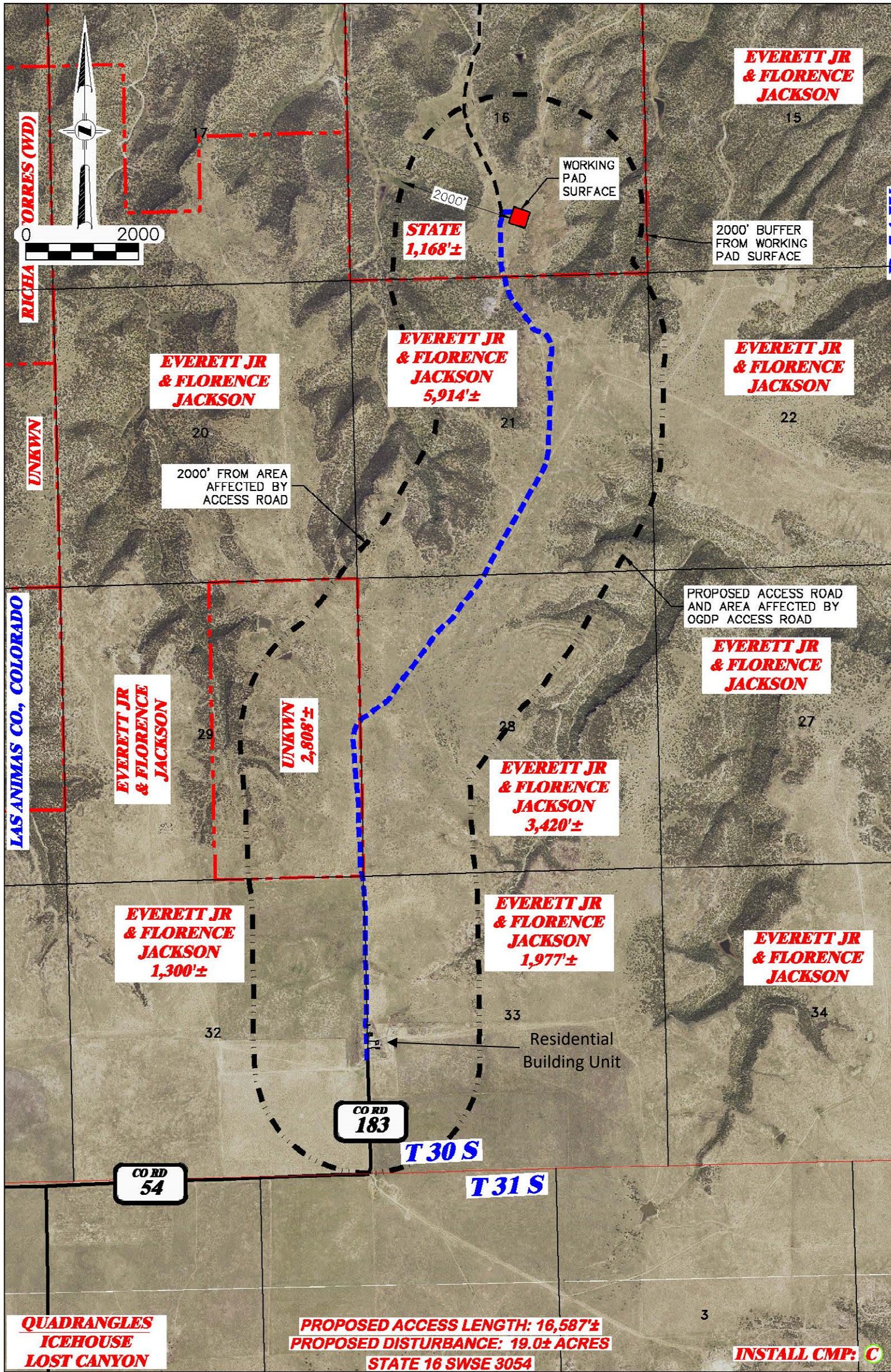




<div>RIFFIN & ASSOCIATES, INC.</div> <div><small>(307) 362-6028</small> 1414 ELK ST., ROCK SPRINGS, WY 82901</div>		<div>PROPOSED NEW ACCESS MAP</div> <div>BNL (ENTERPRISE) INC.</div> <div>STATE 16 SWSE 3054</div> <div>SWSE, SECTION 16, T. 30 S., R. 54 W., 6th P.M.,</div> <div>LAS ANIMAS COUNTY, COLORADO</div>	
DRAWN: 7/20/2021 - DEH	SCALE: 1" = 2000'	<div></div>	PROPOSED WORKING PAD SURFACE
REVISED: 3/21/22 - JMB	DRG JOB No. 22139		
MISC. REVISIONS	304b(7)F ROAD 1 OF 2	PROPOSED ACCESS W/ AFFECTED AREA - - - - -	



<div>RIFFIN & ASSOCIATES, INC.</div> <div><small>(307) 362-5028</small> 1414 ELK ST., ROCK SPRINGS, WY 82901</div>		PROPOSED NEW ACCESS MAP	
		BNL (ENTERPRISE) INC. STATE 16 SWSE 3054 SWSE, SECTION 16, T.30 S., R. 54 W., 6th P.M., LAS ANIMAS COUNTY, COLORADO	
DRAWN: 7/20/2021 - DEH	SCALE: 1" = 2000'		PROPOSED WORKING PAD SURFACE
REVISED: 3/21/22 - JMB	DRG JOB No. 22139		
MISC. REVISIONS	304b(7)F ROAD 2 OF 2	PROPOSED ACCESS W/ AFFECTED AREA - - - - -	