

UNGRADED ELEVATION: 5506.0'
FINAL ELEVATION: 5505.1'
AREA OF DISTURBANCE: 3.4± ACRES
AREA OF WORKING PAD SURFACE: 2.1± ACRES

STATE 16 SWSE 3054

N

500

0

500

SCALE FEET

BEFORE DIGGING
CALL FOR
UTILITY LINE LOCATION

PAD LOCATION:
LAT: N 37.440863
LONG: W 103.465880

WORKING PAD SURFACE

2000' WORKING PAD SURFACE BUFFER

OIL & GAS LOCATION DISTURBANCE

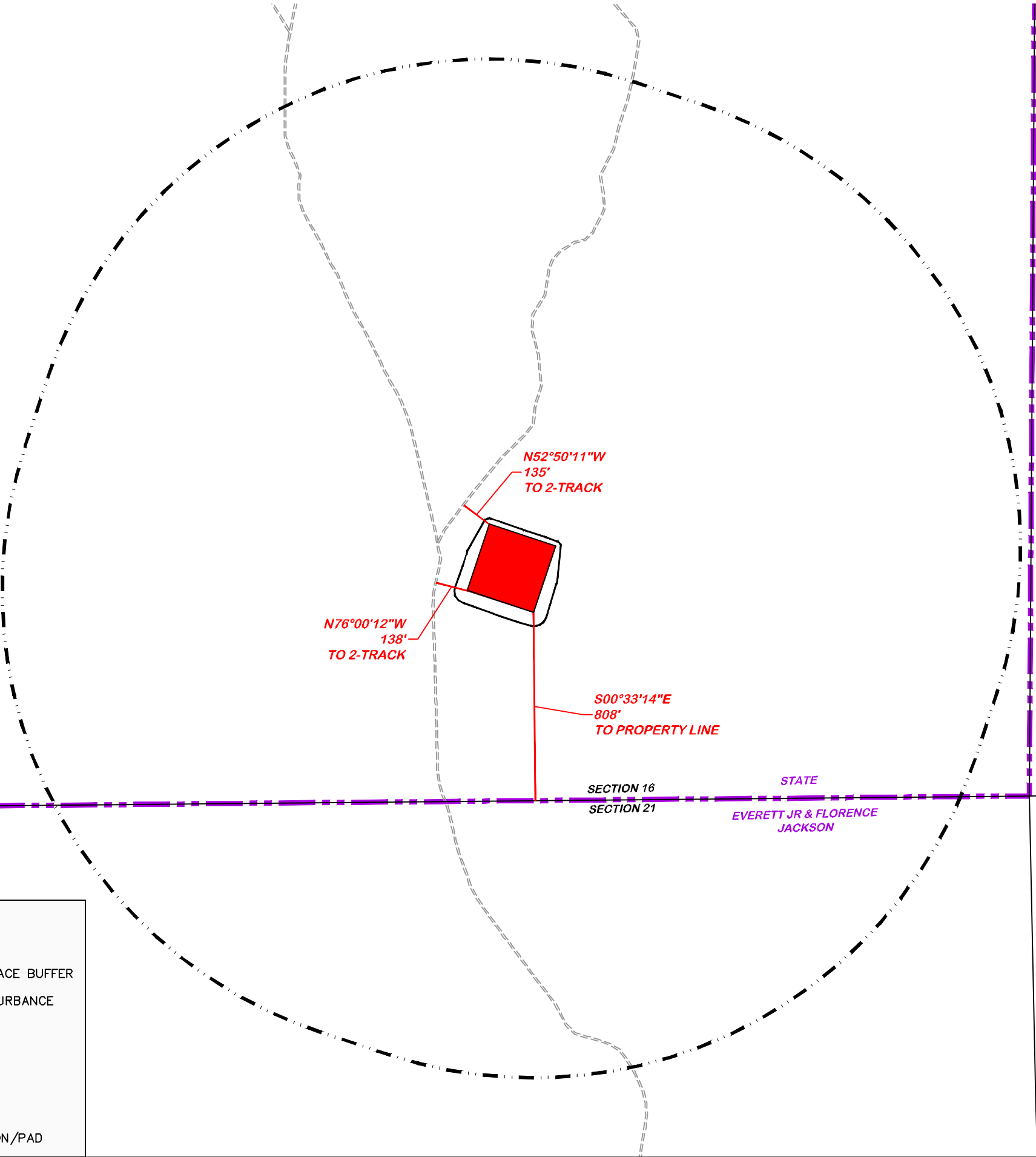
EXISTING COUNTY ROAD

EXISTING 2-TRACK ROAD

EXISTING PROPERTY LINE

EXISTING PIPELINE

EDGE OF EXISTING LOCATION/PAD



LOCATION DRAWING

BNL (ENTERPRISE) INC.
STATE 16 SWSE 3054
SWSE, SECTION 16, T.30 S., R.54 W., 6th P.M.,
LAS ANIMAS COUNTY, COLORADO

DRG

RIFFIN & ASSOCIATES, INC.

(307) 362-5028

1414 ELK ST., ROCK SPRINGS, WY 82901

DRAWN: 7/20/2021 - DEH

REVISED: 3/21/22 - JMB

MISC. REVISIONS

SCALE: 1" = 500'

DRG JOB No. 22139

304b(7)A LOC DWG

LOCATION DRAWING FEATURES 304b(7)A	
FEATURE	DISTANCE
i BUILDING	5280'
ii BUILDING UNITS	5280'
iii PUBLICLY MAINTAINED ROADS AND TRAILS	5280'
iv FENCES	5280'
v ABOVE GROUND UTILITIES	5280'
vi RAILROADS	5280'
vii PIPELINES	5280'
viii MINES	5280'
ix OIL AND GAS WELLS AND PRODUCTION FACILITIES	5280'
x INJECTION WELLS	5280'
xi PLUGGED OIL AND GAS WELLS	5280'
xii KNOWN WATER WELLS	5280'
xiii KNOWN SEWERS WITH MANHOLES	5280'

UNGRADED ELEVATION: 5506.0'
FINAL ELEVATION: 5505.1'
AREA OF DISTURBANCE: 3.4± ACRES
AREA OF WORKING PAD SURFACE: 2.1± ACRES

STATE 16 SWSE 3054

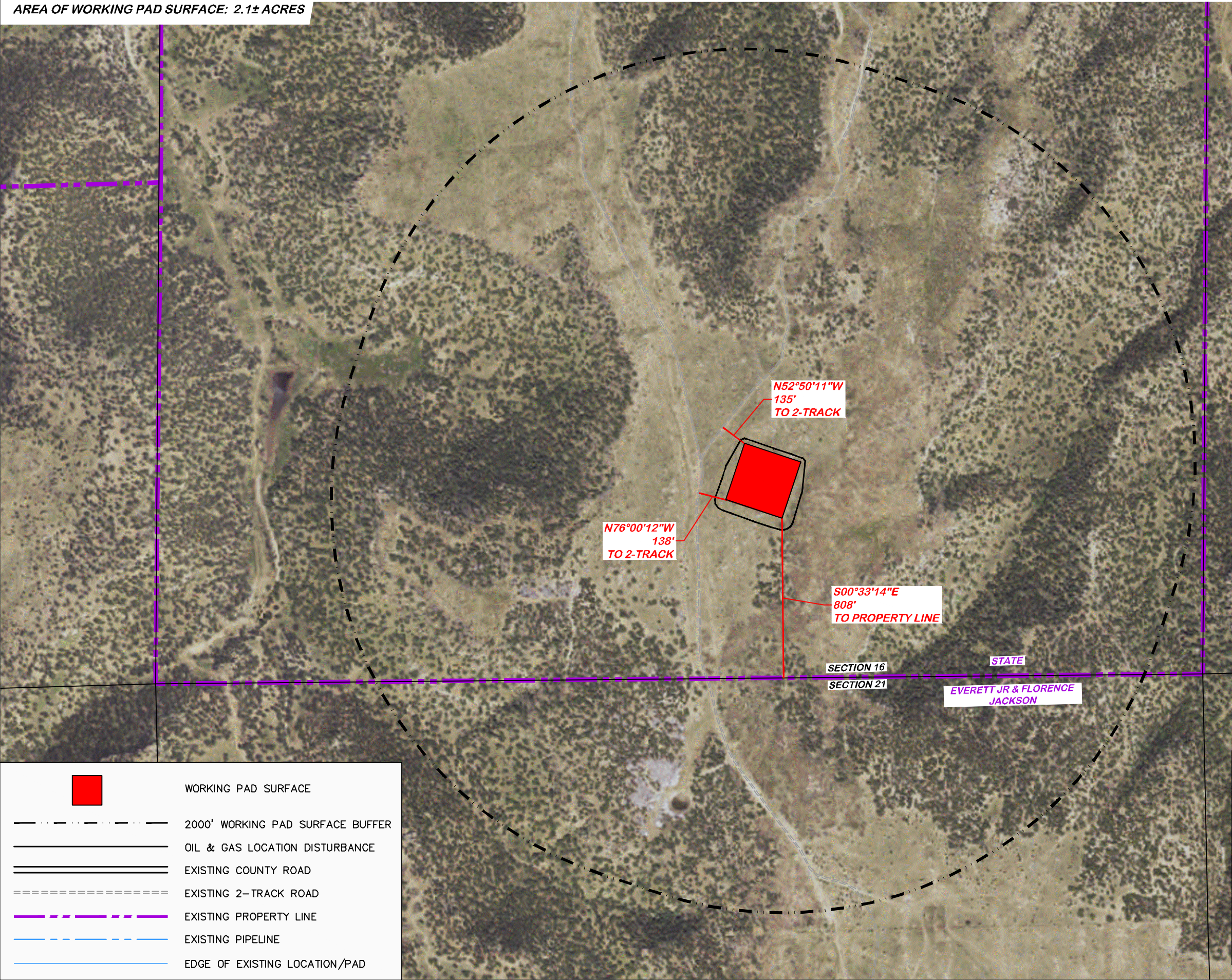
N

5000500

SCALE FEET

BEFORE DIGGING
CALL FOR
UTILITY LINE LOCATION

PAD LOCATION:
LAT: N 37.440863
LONG: W 103.465880



WORKING PAD SURFACE

2000' WORKING PAD SURFACE BUFFER

OIL & GAS LOCATION DISTURBANCE

EXISTING COUNTY ROAD

EXISTING 2-TRACK ROAD

EXISTING PROPERTY LINE

EXISTING PIPELINE

EDGE OF EXISTING LOCATION/PAD

LOCATION DRAWING FEATURES 304b(7)A	
FEATURE	DISTANCE
i BUILDING	5280'
ii BUILDING UNITS	5280'
iii PUBLICLY MAINTAINED ROADS AND TRAILS	5280'
iv FENCES	5280'
v ABOVE GROUND UTILITIES	5280'
vi RAILROADS	5280'
vii PIPELINES	5280'
viii MINES	5280'
ix OIL AND GAS WELLS AND PRODUCTION FACILITIES	5280'
x INJECTION WELLS	5280'
xi PLUGGED OIL AND GAS WELLS	5280'
xii KNOWN WATER WELLS	5280'
xiii KNOWN SEWERS WITH MANHOLES	5280'

RIFFIN & ASSOCIATES, INC.
1414 ELK ST., ROCK SPRINGS, WY 82901
(307) 362-6028

DRAWN: 7/20/2021 - DEH

REVISD: 3/21/22 - JMB

MISC. REVISIONS

SCALE: 1" = 500'

DRG JOB No. 22139

304b(7)A LOC AERIAL

LOCATION DRAWING

BNL (ENTERPRISE) INC.
STATE 16 SWSE 3054
SWSE, SECTION 16, T.30 S., R.54 W., 6th P.M.,
LAS ANIMAS COUNTY, COLORADO