

BNL (ENTERPRISE) INC.
STATE 16 SWSE 3054 PAD CULTURAL DISTANCES
SWSE, SECTION 16, T30S, R54W, 6th PM
DATE: 7/20/2021 - D. HENDERHAN

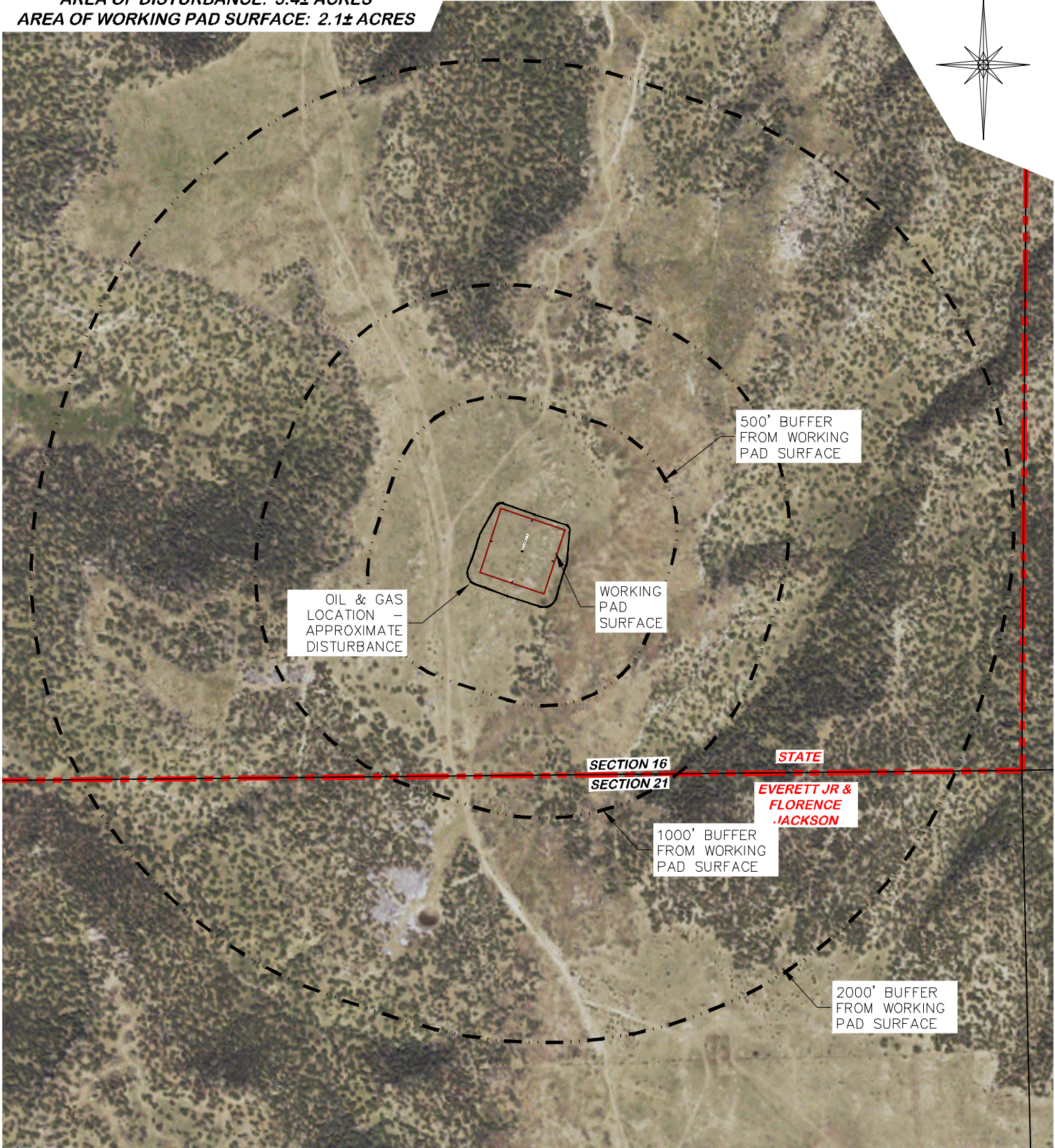
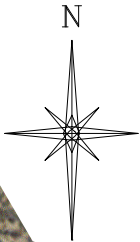
REVISED: 2/28/2022 - J. BOSH - MISC. REVISIONS

DISTANCE FROM WORKING PAD SURFACE 304b(3)A																		
	BUILDING		RESIDENTIAL BUILDING UNIT		HIGH OCCUPANCY BUILDING UNIT		SCHOOL FACILITY		DOAA		PUBLIC ROAD		ABOVE GROUND UTILITY		RAILROAD		PROPERTY LINE	
	DIRECTION	LENGTH	DIRECTION	LENGTH	DIRECTION	LENGTH	DIRECTION	LENGTH	DIRECTION	LENGTH	DIRECTION	LENGTH	DIRECTION	LENGTH	DIRECTION	LENGTH	DIRECTION	LENGTH
WPS	NE	5280'	NE	5280'	SE	5280'	SE	5280'	W	5280'	S	5280'	NE	5280'	NE	5280'	S	808'
					DISTANCE FROM WORKING PAD SURFACE - DISPROPORTIONATELY IMPACTED COMMUNITY													
							RESIDENTIAL BUILDING UNIT		HIGH OCCUPANCY BUILDING UNIT		SCHOOL FACILITY							
					WPS		DIRECTION	LENGTH	DIRECTION	LENGTH	DIRECTION	LENGTH						
							N	5280'	N	5280'	N	5280'						

CULTURAL FEATURE INFORMATION <u>304b(3)B</u>			
CULTURAL FEATURE	0-500 FEET		501 - 1,000 FEET
	NUMBER		NUMBER
BUILDING UNIT	0		0
RESIDENTIAL BUILDING UNIT	0		0
HIGH OCCUPANCY BUILDING UNIT	0		0
SCHOOL PROPERTIES	0		0
SCHOOL FACILITIES	0		0
DESIGNATED OUTDOOR ACTIVITY AREA	0		0
SCHOOL WITHIN DISPROPORTIONALLY IMPACTED COMMUNITY	0		0

DISTANCE FROM WELL HEAD																		
WELL NAME	BUILDING		RESIDENTIAL BUILDING		HIGH OCCUPANCY		SCHOOL FACILITY		DOAA		PUBLIC ROAD		ABOVE GROUND UTILITY		RAILROAD		PROPERTY LINE	
	DIRECTION	LENGTH	DIRECTION	LENGTH	DIRECTION	LENGTH	DIRECTION	LENGTH	DIRECTION	LENGTH	DIRECTION	LENGTH	DIRECTION	LENGTH	DIRECTION	LENGTH	DIRECTION	LENGTH
STATE 16 SWSE 3054	NE	5280'	NE	5280'	SE	5280'	SE	5280'	W	5280'	S	5280'	NE	5280'	NE	5280'	S	999'

UNGRADED ELEVATION: 5506.0'
FINAL ELEVATION: 5505.1'
AREA OF DISTURBANCE: 3.4± ACRES
AREA OF WORKING PAD SURFACE: 2.1± ACRES




CULTURAL ITEMS:	
MEASURED FROM NEAREST EDGE OF THE PROPOSED WORKING PAD SURFACE	
BUILDING	5280+
RESIDENTIAL BUILDING	5280+
HIGH OCCUPANCY BUILDING	5280+
DOAA	5280+
PUBLIC ROAD	5280+
ABOVE GROUND UTILITY	5280+
RAILROAD	5280+
PROPERTY LINE	808'+ S
SCHOOL FACILITY	5280+
SCHOOL PROPERTY LINE	5280+
CHILD CARE FACILITY	5280+
SCHOOL PROPERTY LINE	5280+
DI COMMUNITY	5280+

CULTURAL FEATURE INFORMATION			
PRODUCTION FEATURE	0-500 FEET	501 - 1,000 FEET	1,001 - 2,000 FEET
	NUMBER	NUMBER	NUMBER
BUILDING	0	0	0
RESIDENTIAL BUILDING	0	0	0
HIGH OCCUPANCY BUILDING	0	0	0
SCHOOL PROPERTIES	0	0	0
SCHOOL FACILITIES	0	0	0
DOAA	0	0	0



STATE 16 SWSE 3054



DRG RIFFIN & ASSOCIATES, INC.
(307) 362-5028 1414 ELK ST., ROCK SPRINGS, WY 82901

DRAWN: 7/20/2021 - DEH	SCALE: 1" = 600'
REVISED: 3/21/22 - JMB	DRG JOB No. 22139
MISC. REVISIONS	304b(3)C CULTURAL

CULTURAL DISTANCES DRAWING

CULTURAL DISTANCES
BNL (ENTERPRISE) INC.
STATE 16 SWSE 3054
SWSE, SECTION 16, T. 30 S., R. 54 W., 6th P.M.,
LAS ANIMAS COUNTY, COLORADO