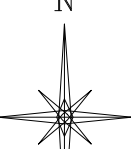


UNGRADED ELEVATION: 5402.1'
 FINAL ELEVATION: 5401.2'
 AREA OF DISTURBANCE: 3.6± ACRES
 AREA OF WORKING PAD SURFACE: 2.1± ACRES

STATE 09 SWSE 3054

N

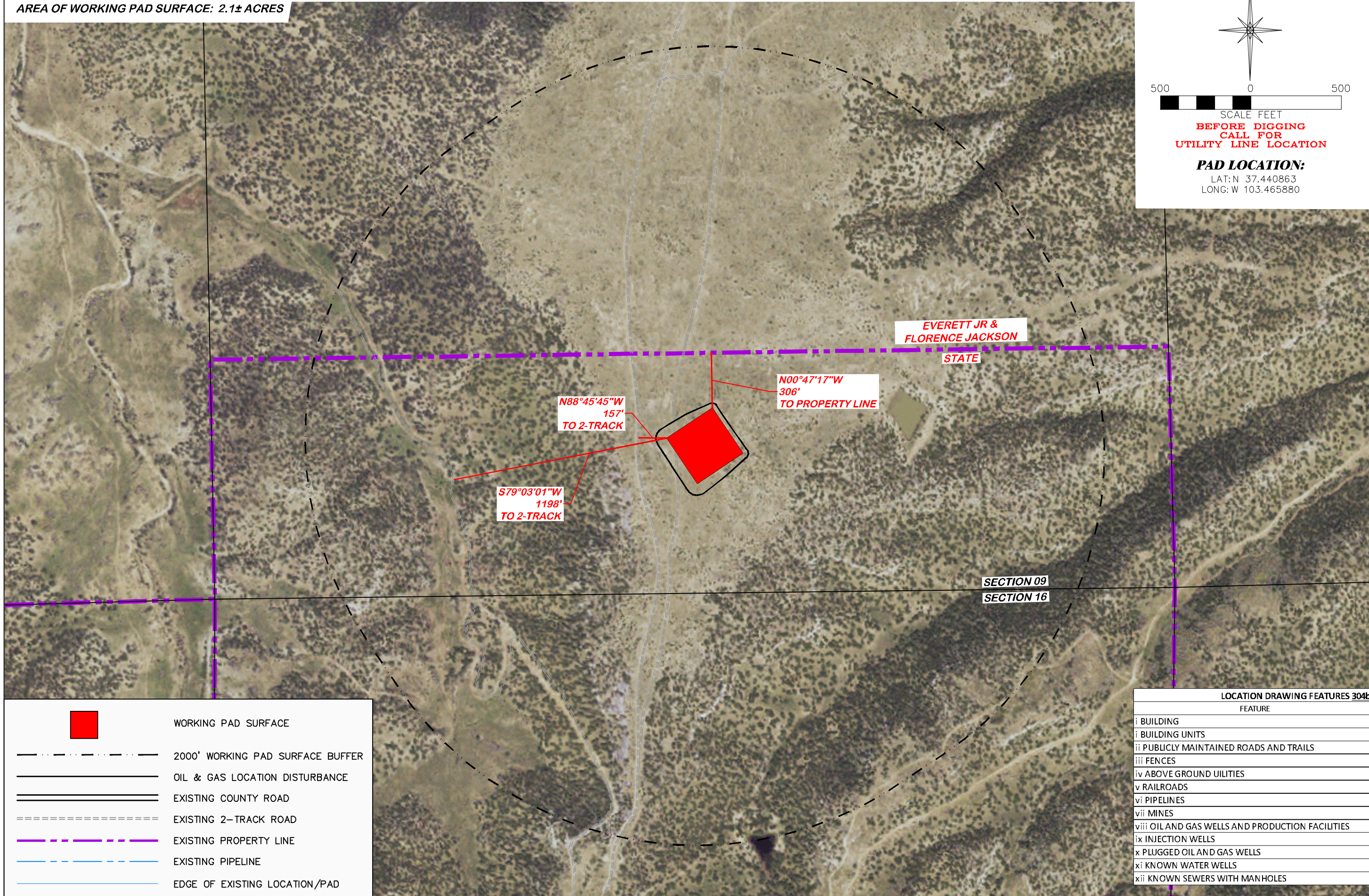


500 0 500

SCALE FEET

**BEFORE DIGGING
CALL FOR
UTILITY LINE LOCATION**

PAD LOCATION:
 LAT: N 37.440863
 LONG: W 103.465880



LOCATION DRAWING

BNL (ENTERPRISE) INC.
 STATE 09 SWSE 3054
 SWSE, SECTION 9, T.30 S., R. 54 W., 6th P.M.,
 LAS ANIMAS COUNTY, COLORADO

DRS RIFFIN & ASSOCIATES, INC.
 1414 ELK ST., ROCK SPRINGS, WY 82901
 (307) 862-6028

DRAWN: 7/20/2021 - DEH







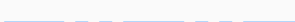

REVISION: 3/21/22 - JMB

SCALE: 1" = 500'

DRG JOB No. 22138

304b(7)A LOC AERIAL

MISC. REVISIONS

	WORKING PAD SURFACE
	2000' WORKING PAD SURFACE BUFFER
	OIL & GAS LOCATION DISTURBANCE
	EXISTING COUNTY ROAD
	EXISTING 2-TRACK ROAD
	EXISTING PROPERTY LINE
	EXISTING PIPELINE
	EDGE OF EXISTING LOCATION/PAD

LOCATION DRAWING FEATURES 304b(7)A	
FEATURE	DISTANCE
i BUILDING	5280'
i BUILDING UNITS	5280'
ii PUBLICLY MAINTAINED ROADS AND TRAILS	5280'
iii FENCES	5280'
iv ABOVE GROUND UTILITIES	5280'
v RAILROADS	5280'
vi PIPELINES	5280'
vii MINES	5280'
viii OIL AND GAS WELLS AND PRODUCTION FACILITIES	5280'
ix INJECTION WELLS	5280'
x PLUGGED OIL AND GAS WELLS	5280'
xi KNOWN WATER WELLS	5280'
xii KNOWN SEWERS WITH MANHOLES	5280'