
TRANSPORTATION PLAN

BNL | ENTERPRISE

State 09 SWSE 3054

Sec. 9 T30S R54W (SW/4 SE/4)

Las Animas County, Colorado

Surface: State

Submitted as an accompaniment to the Form 2A Application and consistent with the requirements of Las Animas County Government.

January 19, 2022

BNL (Enterprise) Inc. Las Animas County, Colorado

Transportation Plan

Project Summary:

BNL (Enterprise) Inc. (“BNL”) proposed State 09 SWSE 3054 Location is located in Sec. 9 T30S R54W in Las Animas County, Colorado. BNL plans to drill and test one *helium* well. If the well produces commercial quantities of helium the well will be shut-in for a period of six to nine months until helium production/processing facilities can be constructed on an offsite facility location. The helium facility will be on lands outside of the Oil and Gas Development Plan. The facility will be constructed on private surface. The landowner agreement provides for the installation of the gas gathering line. The production/processing facilities will not require an oil and gas development plan. BNL will use a 130-mil rig liner during the drilling and testing of the well. As minimal soil will be disturbed during this time as possible. The well will be drilled vertically to no more than 2,500 feet and will not require hydraulic fracturing. The proposed location is state surface and state minerals with a total pad disturbance of 3.6± acres. During the drilling and testing phase, the existing access road will be minimally upgraded to allow for construction and, if needed, emergency vehicles. If the well proves to be of commercial quantities, the road will be crowned and ditched, in consultation with the Colorado State Land Board and any other owners along the access route. The graded site elevation is expected to be approximately 5,402’. No federal lands or minerals are involved in this project. All operations would be conducted in compliance with all federal, state, and local applicable laws, rules, and regulations.

Plan

All traffic will enter the State 09 SWSE 3054 wellpad (“Location”) from a private road off County Road 183. Please see the attached Haul Route Map and Truck Trip Counts. A Transportation Plan is not required by Las Animas County as part of the permit process. BNL will work with Las Animas County on any Access Permits or Rights-of-Ways needed.

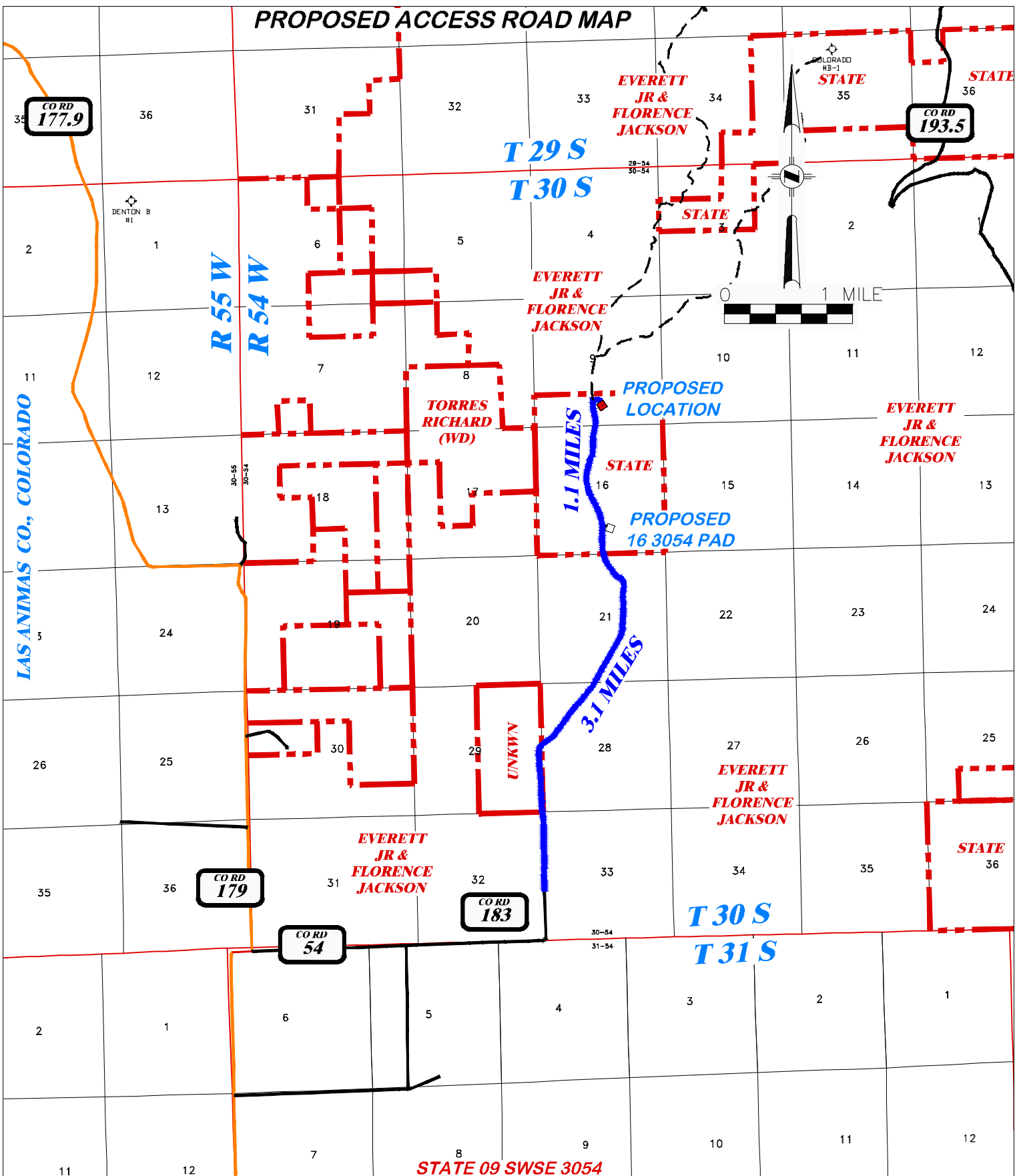
BNL has not chosen service providers for this Location. However, the service providers will either come from I-25, north of the Denver area, or from I-25, south from Trinidad. Due to the remote area of the Location, access routes are extremely limited. No access permit will be required.

The majority of heavy traffic will occur during daylight hours most likely between the times of 7:00 a.m. and 6:00 p.m. during the construction phase. During drilling and completion there is a possibility of traffic any time day or night, however, once equipment is on location for drilling and completion, it will remain in place for several days, negating any need for daily mobilization. Traffic will significantly subside during the long-term production phase. Production traffic will include light duty trucks usually no more than once a day for a lease operator.

Best Management Practices:

- Application of fresh water during dry season.
- Applications of approved chemicals may be applied to areas not needed for traffic to form less erodible soils.
- Fresh water or magnesium chloride application to graveled surface of the Location and associated road(s).
- Speed limit signs will be posted per surface owner agreement.
- Drivers will observe posted speed limits on unpaved roads to avoid or minimize fugitive dust.
- Drivers will cover and secure loads to prevent debris from entering roadways.
- Vehicles will be maintained in good working condition to avoid excess emissions and safety concerns.
- Contractors will be notified of speed limits if no signs are posted.
- Regular road maintenance such as grading and adding additional gravel as needed.

PROPOSED ACCESS ROAD MAP



DRG RIFFIN & ASSOCIATES, INC.
 (307) 362-5028 1414 ELK ST., ROCK SPRINGS, WY 82901

PROPOSED ACCESS ROAD MAP

BNL (ENTERPRISE) INC.
STATE 09 SWSE 3054
SWSE, SECTION 9, T. 30 S., R. 54 W., 6th P.M.,
LAS ANIMAS COUNTY, COLORADO

DRAWN: 7/20/2021 - DEH

SCALE: 1" = MILE

REVISED: 11/23/21 - JMB

DRG JOB No. 22138

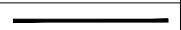
REVISED COMPANY NAME

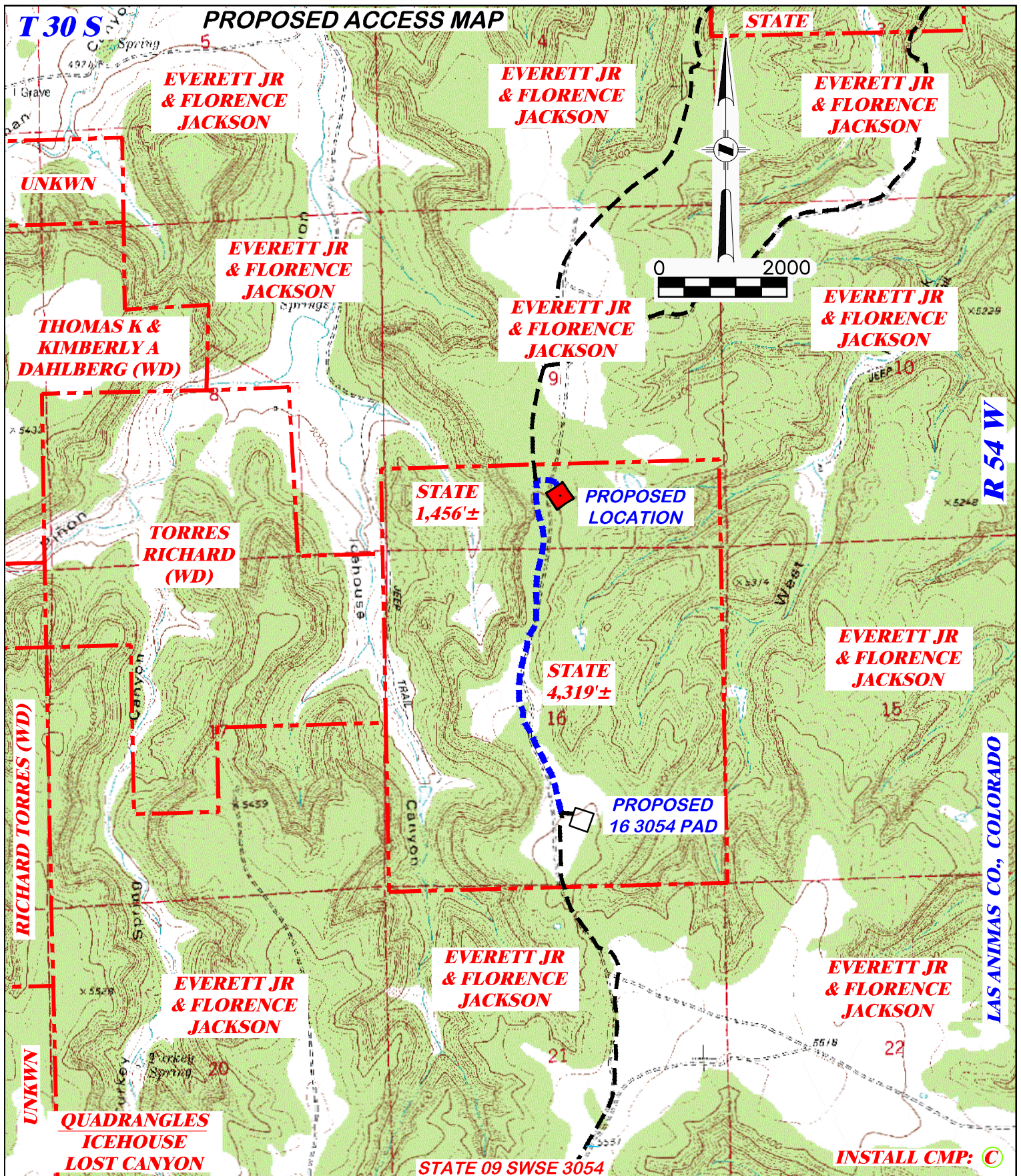
09 ACCESS




PROPOSED ROUTE



EXISTING ROAD





 DRG RIFFIN & ASSOCIATES, INC. (307) 362-5028 1414 ELK ST., ROCK SPRINGS, WY 82901		PROPOSED ACCESS MAP BLUESTAR HELIUM STATE 09 SWSE 3054 SWSE, SECTION 9, T. 30 S., R. 54 W., 6th P.M., LAS ANIMAS COUNTY, COLORADO	
		DRAWN: 7/20/2021 - DEH SCALE: 1" = 2000' REVISED: N/A - DRG JOB No. 22138 10 ROAD PROPOSED ACCESS LENGTH: 5,775± PROPOSED ACCESS  EXISTING ROAD 	

TRAFFIC COUNT: DRILLING AND COMPLETION

Traffic counts are per well. The Operator intends to drill and complete one well.

- Days 1 & 2:** MI excavating equipment. Begin to build location and access road. Company trucks, Toilets, and COGCC.
5 Heavy + 4 Light = 9 TOTAL
- Days 3 – 5:** Build and complete location and access road. MO construction equipment and clean up. Toilet, maintenance, and COGCC.
5 Heavy + 2 Light = 7 TOTAL
- Days 6 & 7:** MIRU, drilling rig and equipment, mud system (mobilize), engineer trailer, rig supervisor trailer, potable water, fuel truck, drilling water and rig crews.
Day 6: 17 Heavy + 5 Light = 22 TOTAL
Day 7: 9 Heavy + 5 Light = 14 TOTAL
- Days 8 – 18:** Drill well. Company trucks, rig crews, toilet maintenance, COGCC, drilling water and potable water.
(3 – 4) Heavy + (5 – 8) Light = (8 – 12) TOTAL
- Day 19 & 20:** Casing, logging, cementing, company trucks, rig crews, mud logger, toilet maintenance, COGCC, drilling water and potable water.
Day 19: 9 Heavy + 7 Light = 16 TOTAL
Day 20: 8 Heavy + 6 Light = 14 TOTAL
- Day 21:** Mud system (demobilize), company trucks, rig crews, drilling water and potable water.
5 Heavy + 5 Light = 10 TOTAL
- Days 22 & 23:** Move out all: engineer trailer, rig supervisor trailer, drilling rig and equipment, fuel truck, drilling water, and potable water. Company trucks, toilet maintenance, and COGCC.
Day 22: 7 Heavy + 5 Light = 12 TOTAL
Day 23: 11 Heavy + 7 Light = 18 TOTAL
- Day 24:** Waiting on completion rig.
2 Heavy + 1 Light = 3 TOTAL
- Days 25 – 30:** Completion rig, rig crew and company trucks.
200 Heavy = 200 TOTAL
- Days 31 & 32:** Move out and clean up. Company trucks, toilet maintenance, and COGCC.
4 Light = 4 TOTAL

Every other day: Fuel truck and cutting disposal.

Every 5 days: Toilet maintenance, and COGCC.

TOTAL Light Trips: 59

TOTAL Heavy Trips: 282

TOTAL Trips: 341

TRAFFIC COUNT: POST-COMPLETION

Every day: Field operational traffic

Tri-monthly: Produced water truck and sales oil truck based on 50% BS&W

Bi-monthly: Propane fuel truck and maintenance crew

TOTAL Light Trips: 96

TOTAL Heavy Trips: 30

TOTAL Trips: 126

Note: All trucks will carry loads within the legal limits and should an oversize/overweight load be required, additional permits will be obtained.