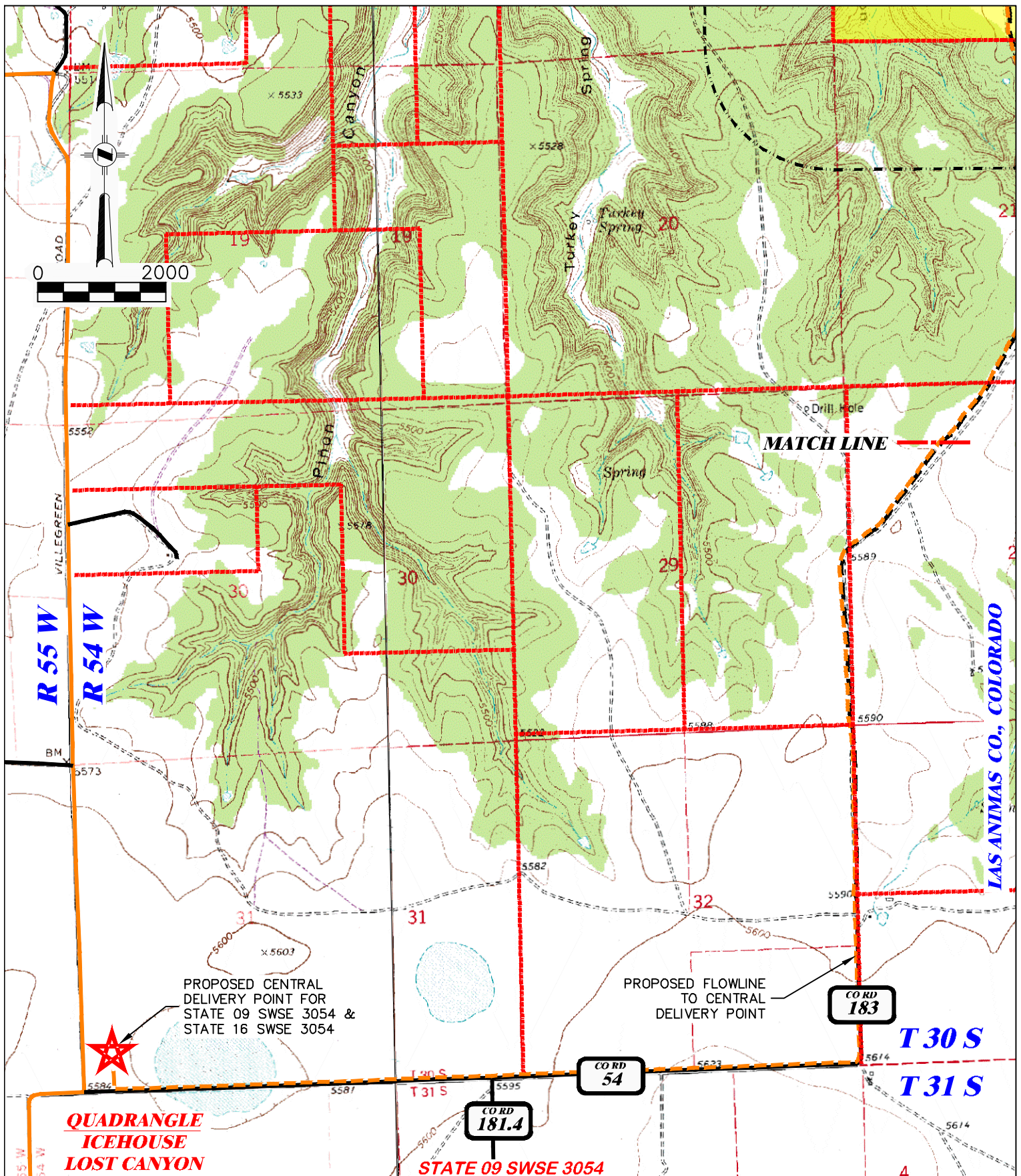


DRG RIFFIN & ASSOCIATES, INC. (307) 362-5028 1414 ELK ST., ROCK SPRINGS, WY 82901		RELATED LOCATION AND FLOWLINE MAP BNL (ENTERPRISE) INC. STATE 09 SWSE 3054 SWSE, SECTION 9, T. 30 S., R. 54 W., 6th P.M., LAS ANIMAS COUNTY, COLORADO	
DRAWN: 1/12/22 - JMB REVISED: NA	SCALE: 1" = 2000' DRG JOB No. 22138	MINERAL LEASEHOLD	PROPOSED FLOWLINE W/ AFFECTED AREA - - - - -
304B(7)G - SHEET 1 OF 2			



DRG RIFFIN & ASSOCIATES, INC. (307) 362-5028 1414 ELK ST., ROCK SPRINGS, WY 82901		RELATED LOCATION AND FLOWLINE MAP BNL (ENTERPRISE) INC. STATE 09 SWSE 3054 SWSE, SECTION 9, T. 30 S., R. 54 W., 6th P.M., LAS ANIMAS COUNTY, COLORADO	
DRAWN: 1/12/22 - JMB	SCALE: 1" = 2000'	MINERAL LEASEHOLD	PROPOSED FLOWLINE W/ AFFECTED AREA
REVISED: NA	DRG JOB No. 22138		
	304B(7)G - SHEET 2 OF 2		