



CEMENT BOND LOG W/  
VARIABLE DENSITY  
GAMMA RAY, CCL, TEMP

Doc# 1310882

Company GMT EXPLORATION CO.  
Well MARBLE 6-65 24-12 1HN  
Field WILDCAT  
County ELBERT  
State COLORADO

Company GMT EXPLORATION CO.  
Well MARBLE 6-65 24-12 1HN  
Field WILDCAT  
County ELBERT State COLORADO

Location: API # : 05-039-06693  
39.510866 / -104.617927  
SEC 24 TWP 6S RGE 65W  
Permanent Datum GL Elevation 6276'  
Log Measured From KB 23'  
Drilling Measured From KB  
Other Services  
Elevation  
K.B. 6299'  
D.F.  
G.L. 6276'

Run Number	ONE						
Depth Driller	2730'						
Depth Logger	2618'						
Bottom Logged Interval	2617'						
Top Log Interval	SURFACE						
Open Hole Size	12-1/4"						
Type Fluid	-						
Density / Viscosity	-						
Max. Recorded Temp.	97						
Estimated Cement Top	-						
Time Well Ready	0945						
Time Logger on Bottom	1015						
Equipment Number	65						
Location	PLATTEVILLE						
Recorded By	K. GIRDLER						
Witnessed By	K. MOSELEY						
Borehole Record					Tubing Record		
Run Number	Bit	From	To	Size	Weight	From	To
Casing Record	Size		Wgt/Ft		Top		Bottom
Surface String	9-5/8"		36#		SURFACE		2730'
Prot. String							
Production String							
Liner							

<<< Fold Here >>>

All interpretations are opinions based on inferences from electrical or other measurements and we cannot and do not guarantee the accuracy or correctness of any interpretation, and we shall not, except in the case of gross or willful negligence on our part, be liable or responsible for any loss, costs, damages, or expenses incurred or sustained by anyone resulting from any interpretation made by any of our officers, agents or employees. These interpretations are also subject to our general terms and conditions set out in our current Price Schedule.

Comments

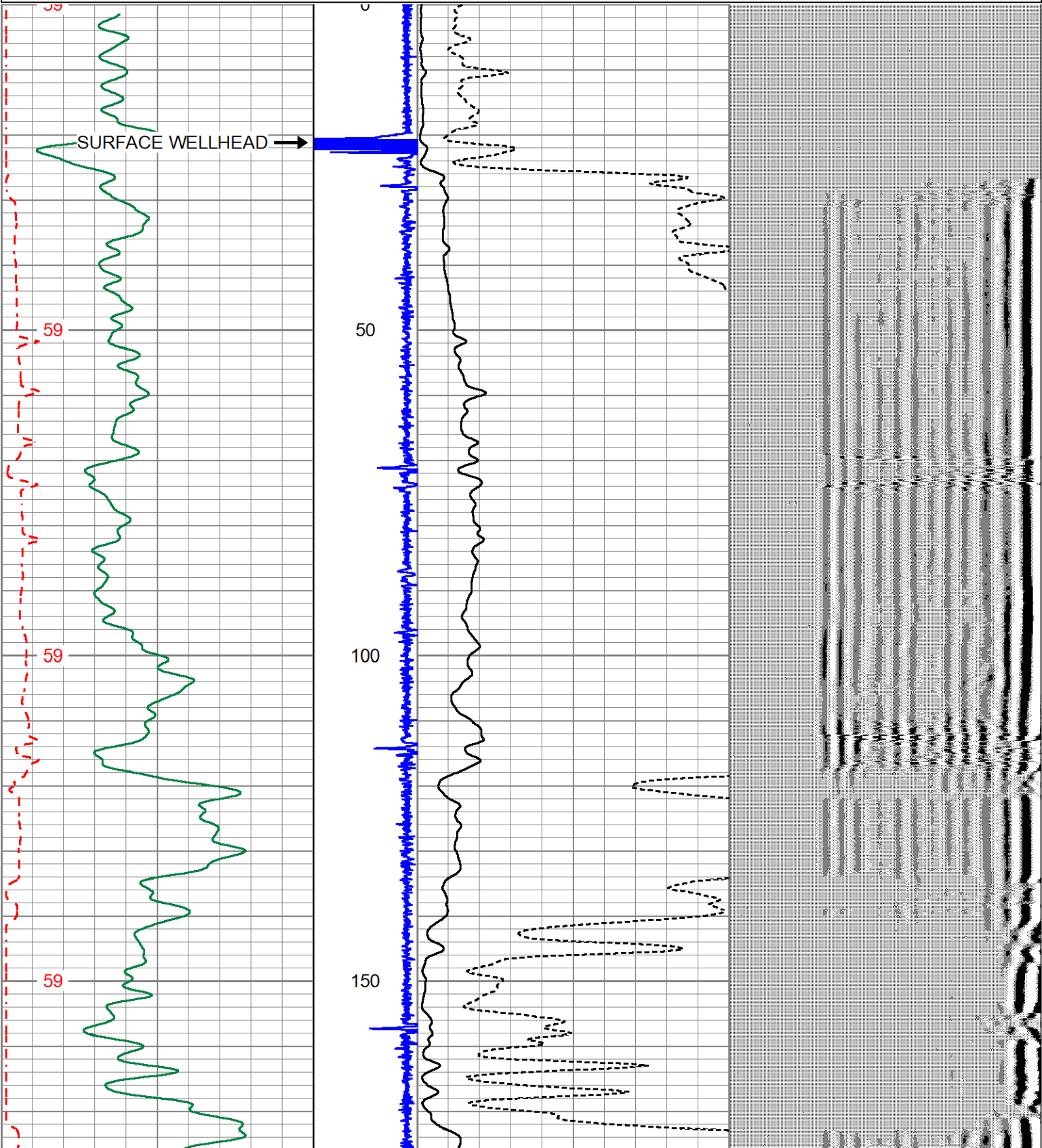
LOG RAN OFF OF 23' K.B.

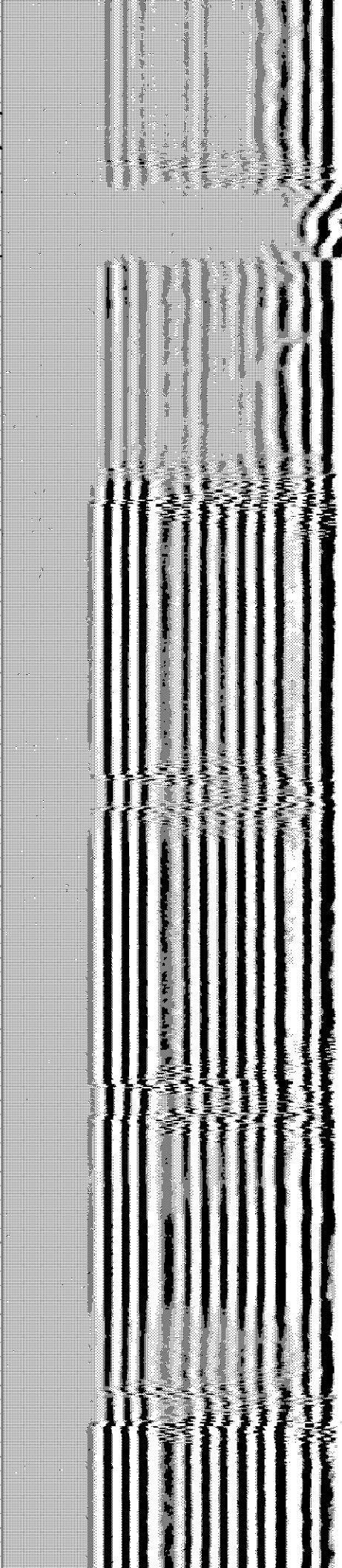
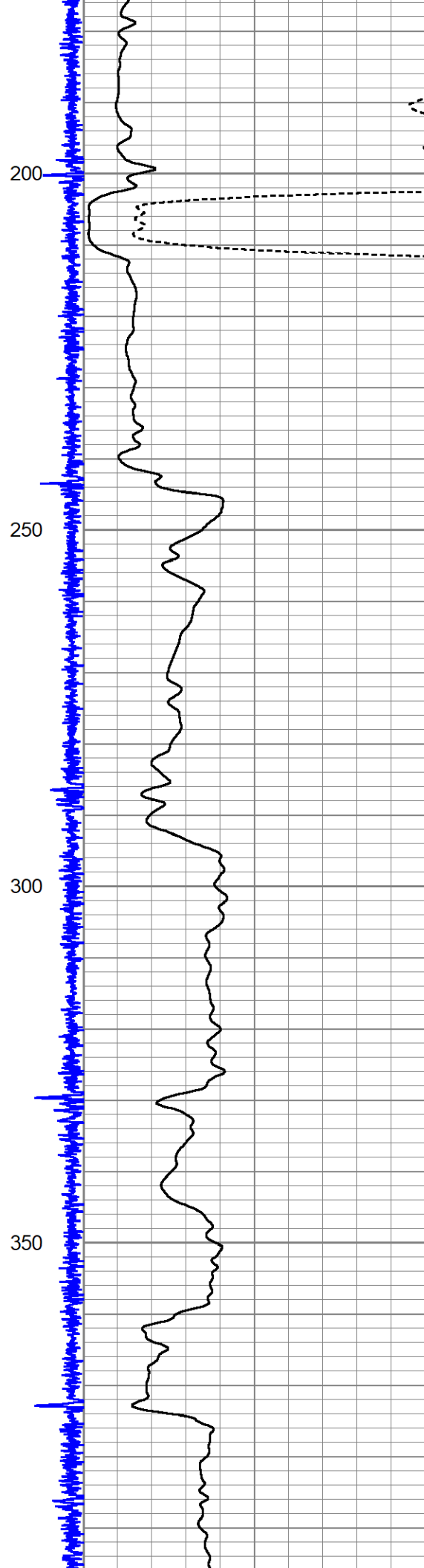
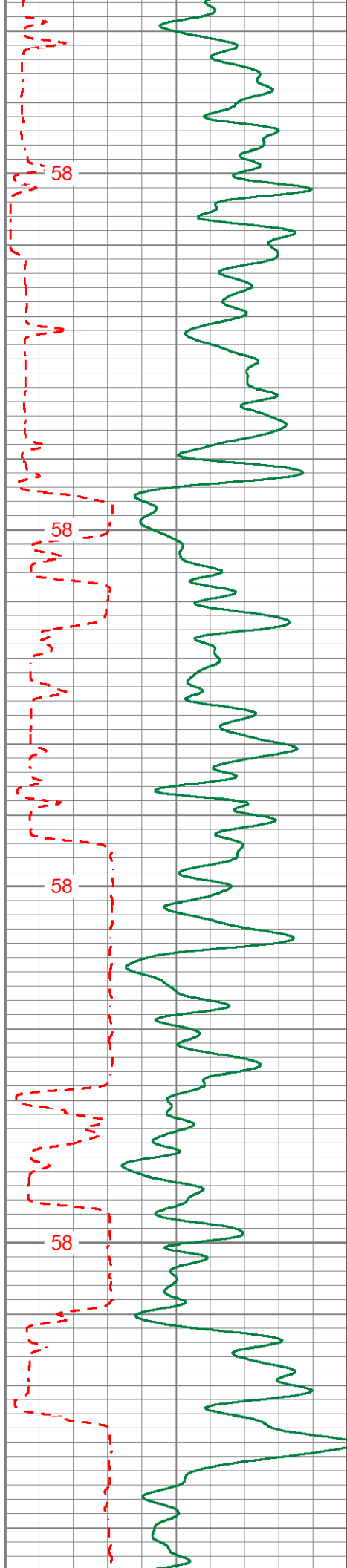
LOG RAN OFF OF CRANE

THANK YOU FOR CHOOSING KLX ENERGY SERVICES

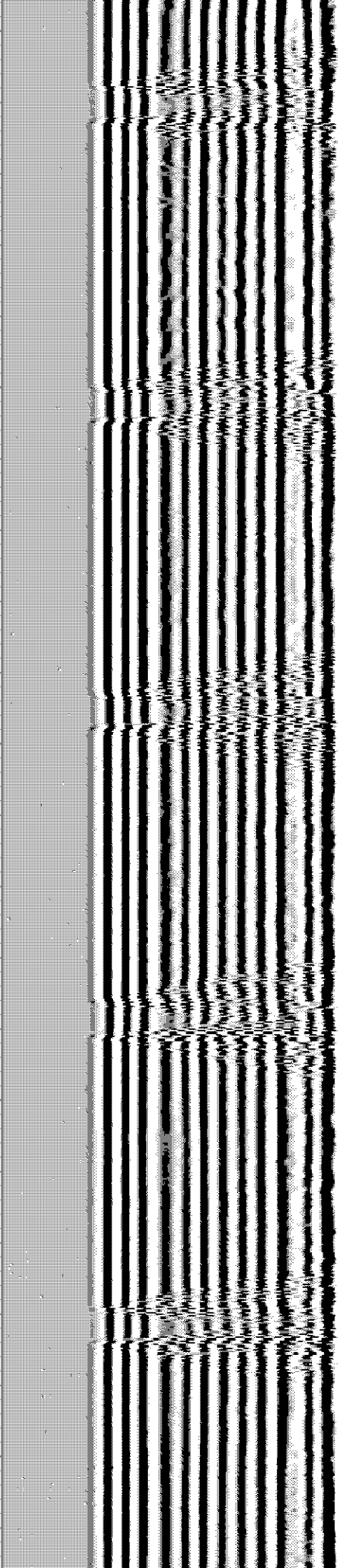
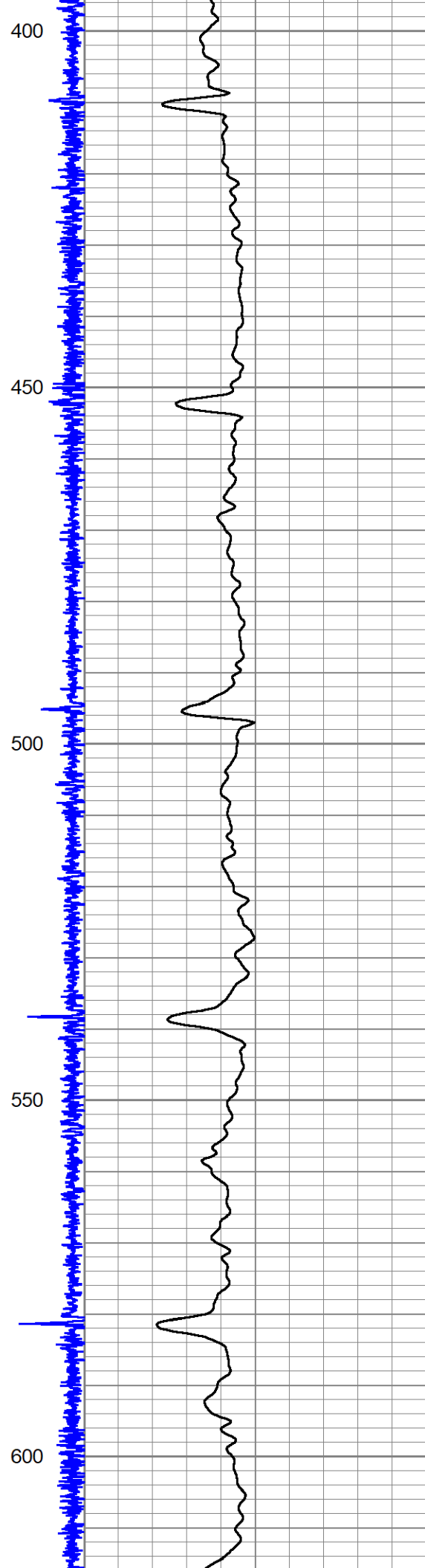
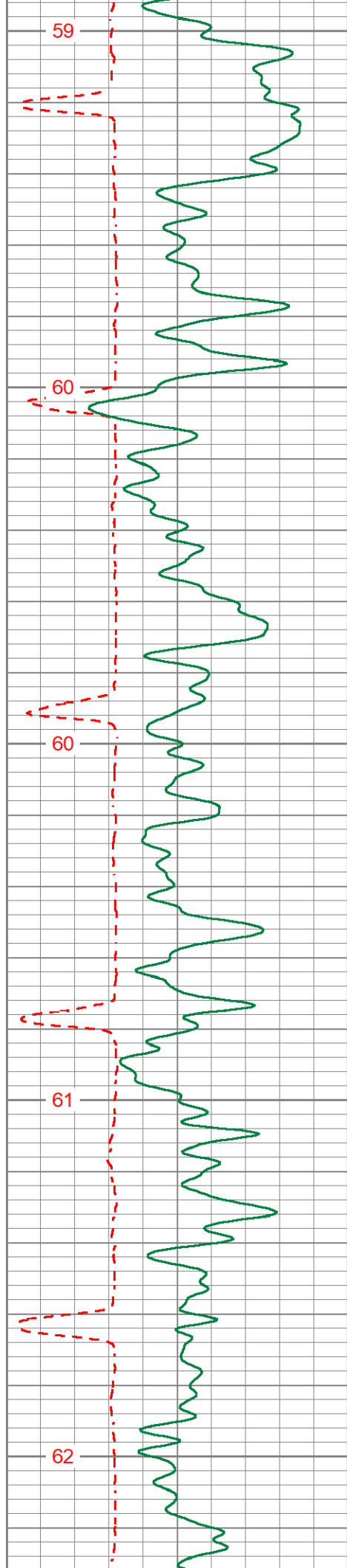
Database File	gmt_marble_6-65_24-12_1hn_cbl.db
Dataset Pathname	CBL3
Presentation Format	cbl_kg
Dataset Creation	Wed May 04 10:51:22 2022
Charted by	Depth in Feet scaled 1:240

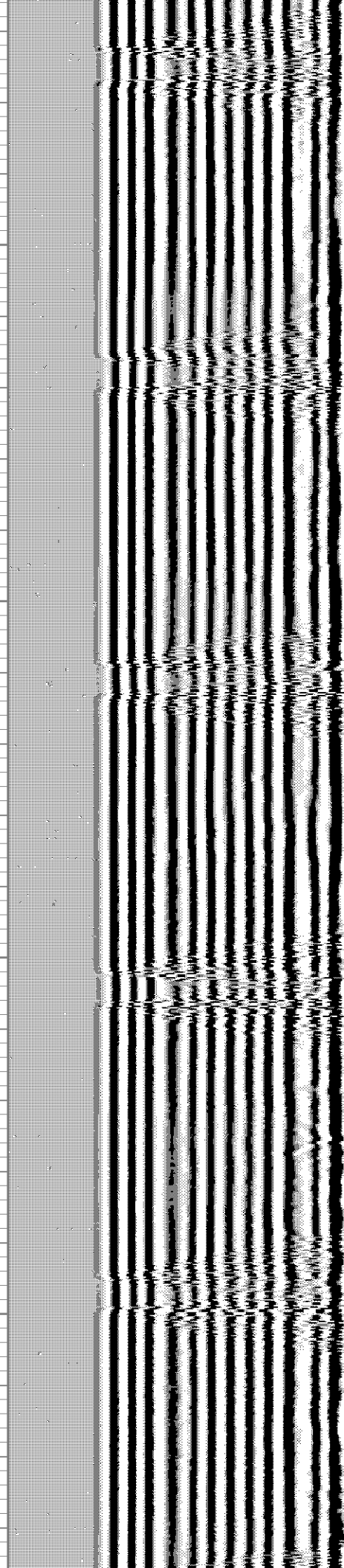
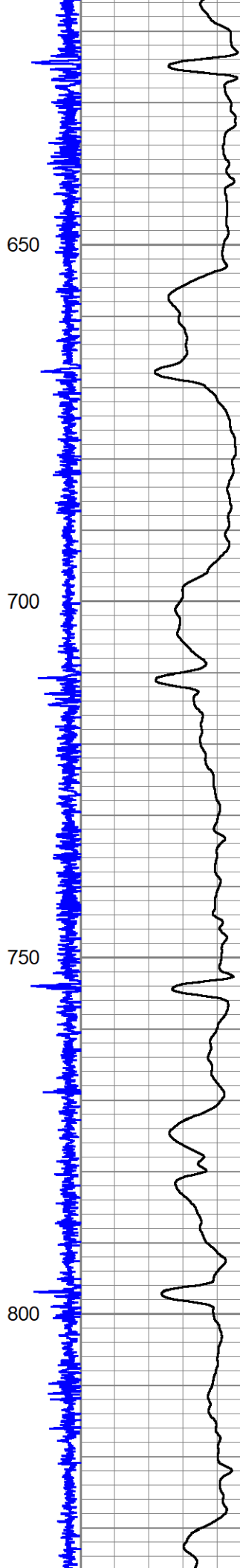
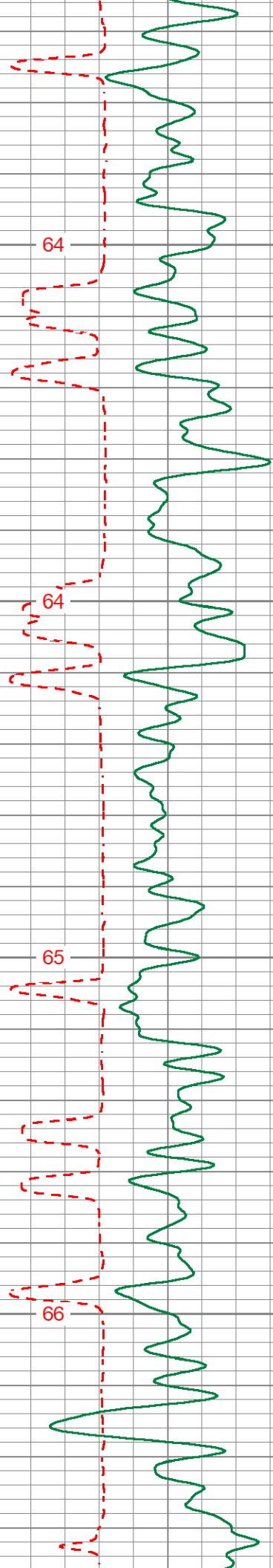
400	TRAVEL TIME (usec)	200	Collar Location	0	AMP AMPLITUDE (mV)	10	200	VDL (usec)	1200
0	Gamma Ray (GAPI)	150	9	-1	0	100			
0	Line Speed (ft/min)	100							
TEMP									
(degF)									

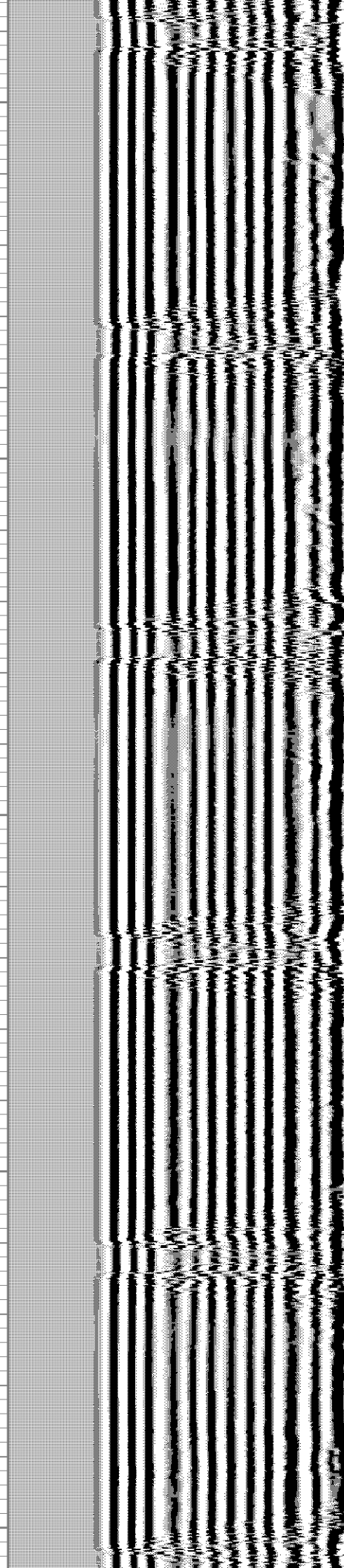
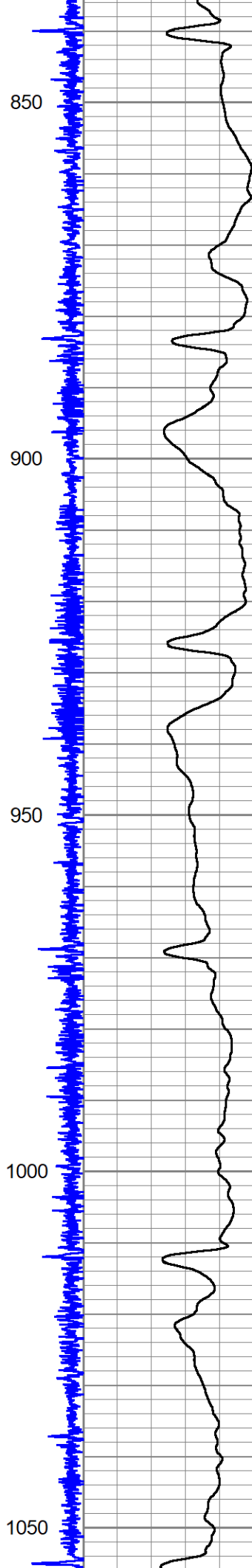
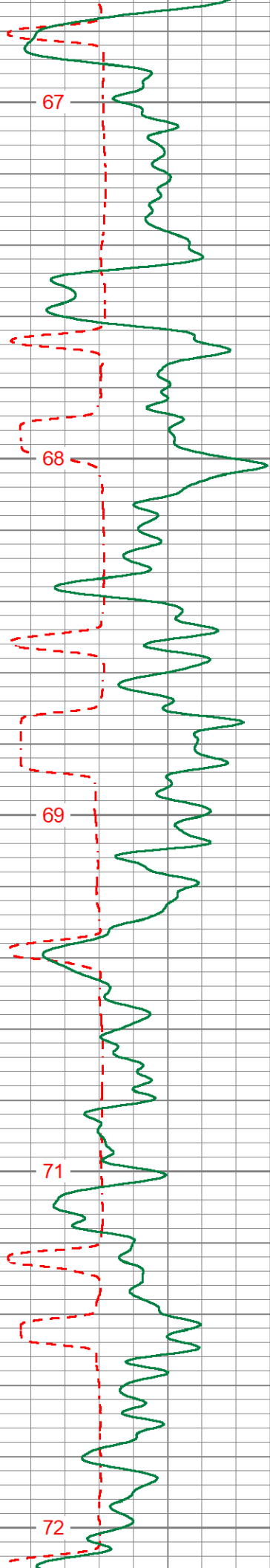




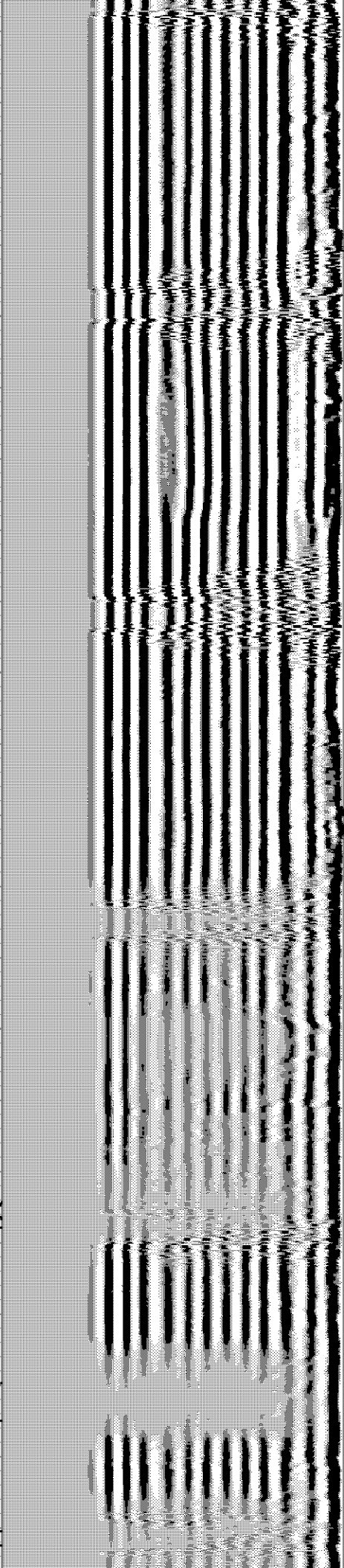
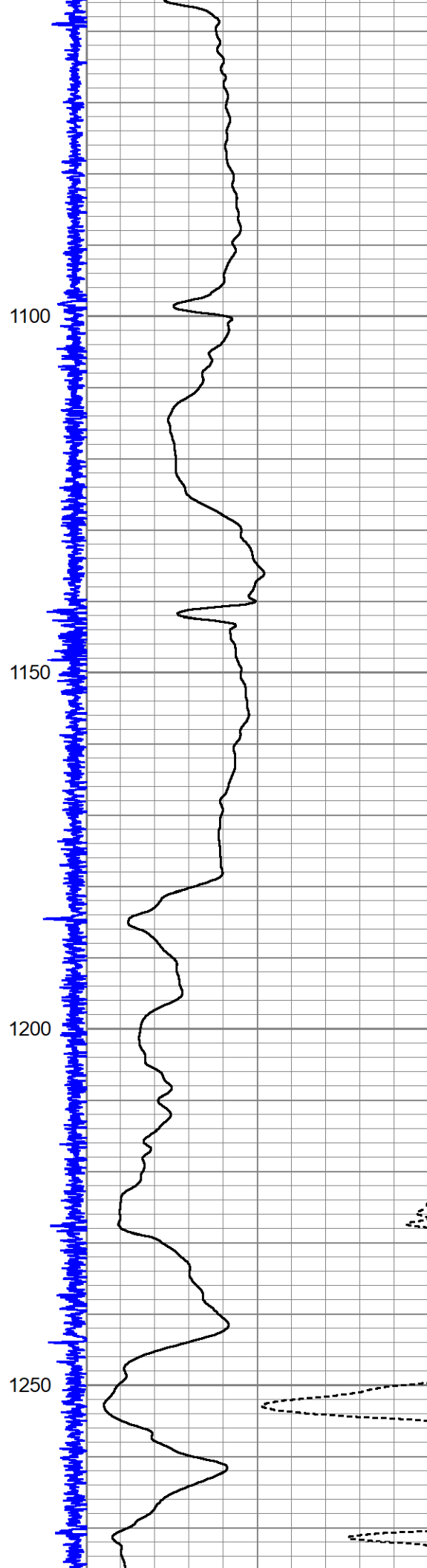
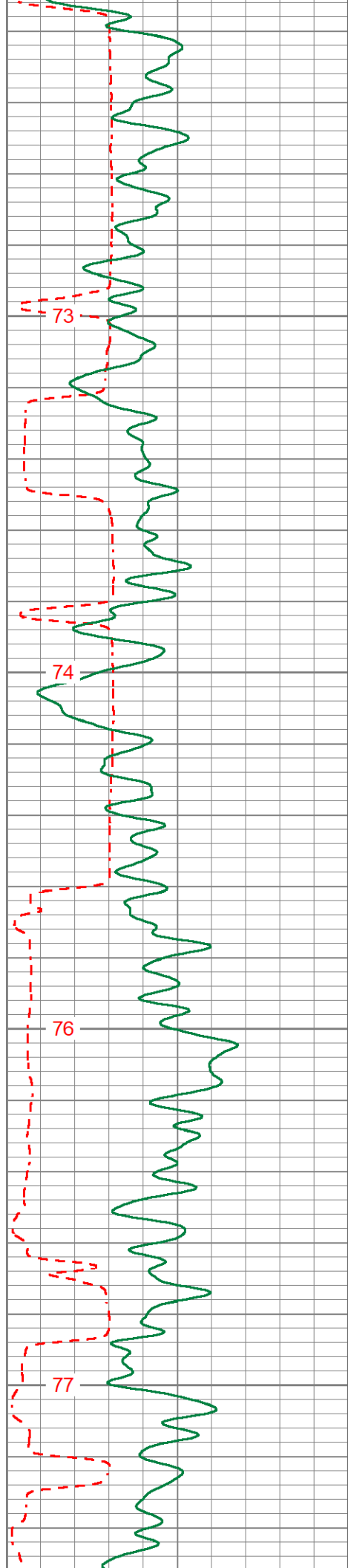


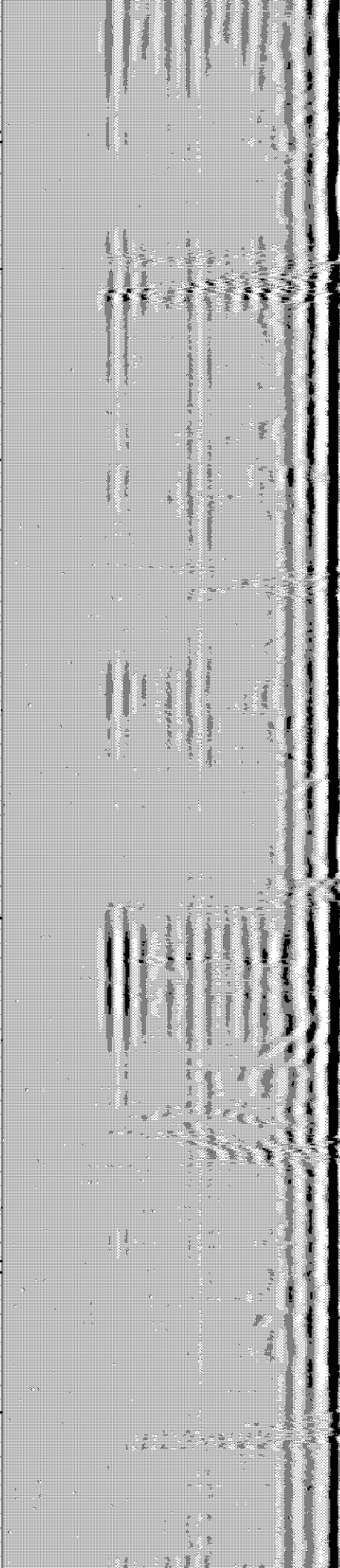
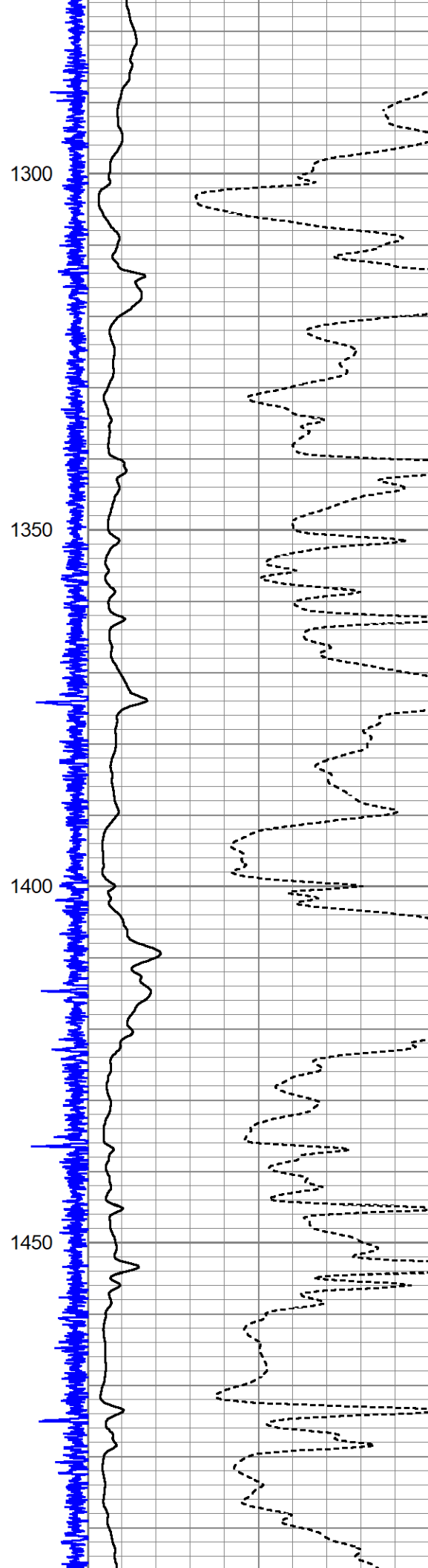
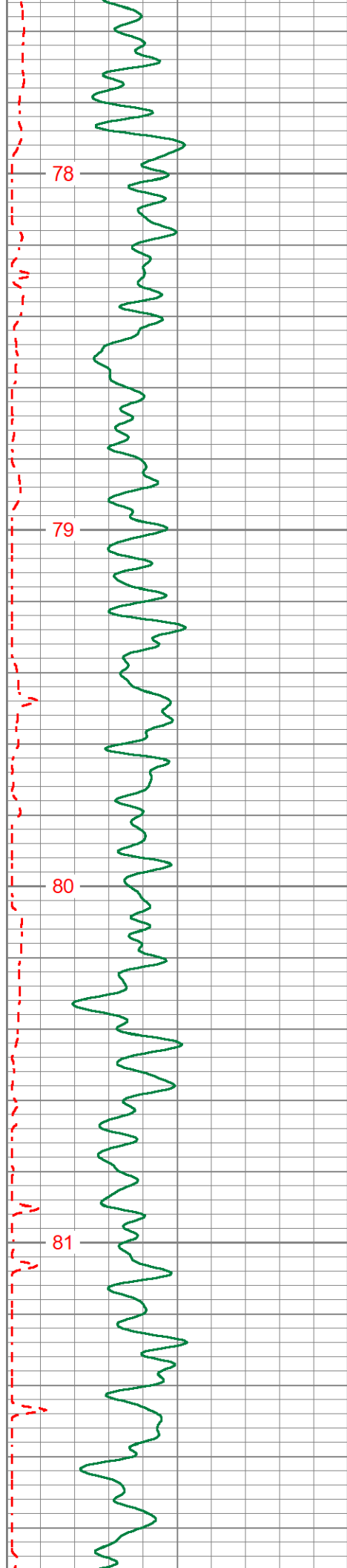




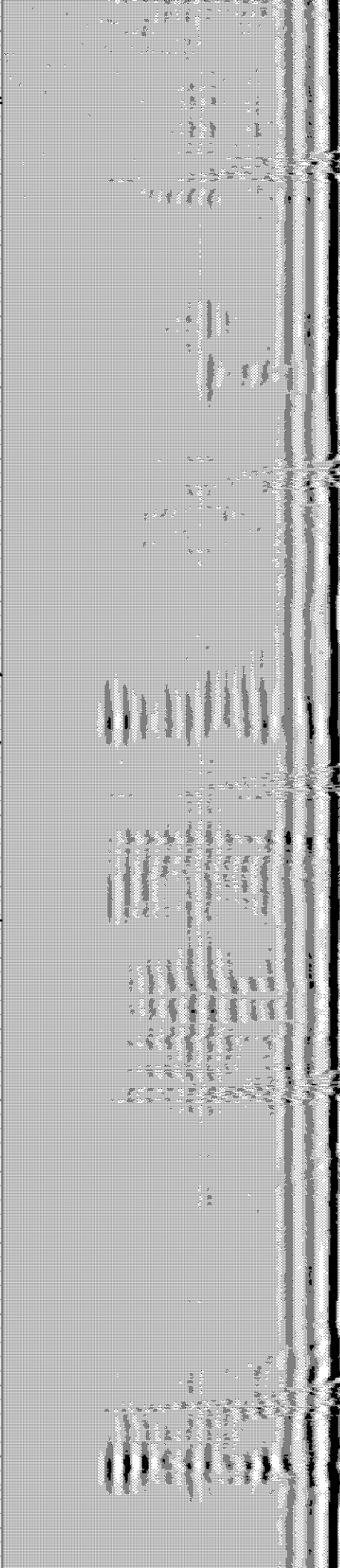
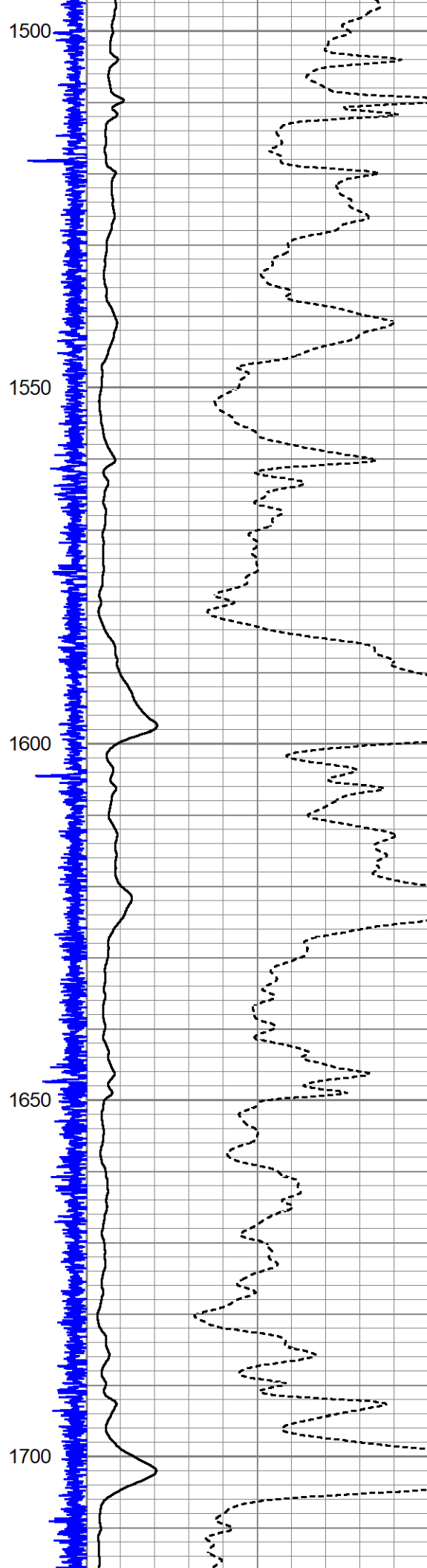
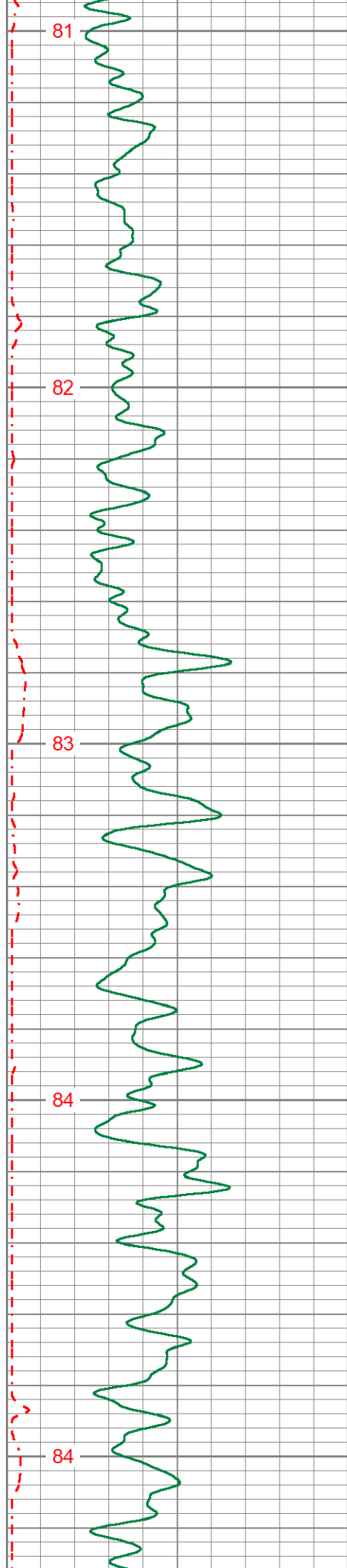


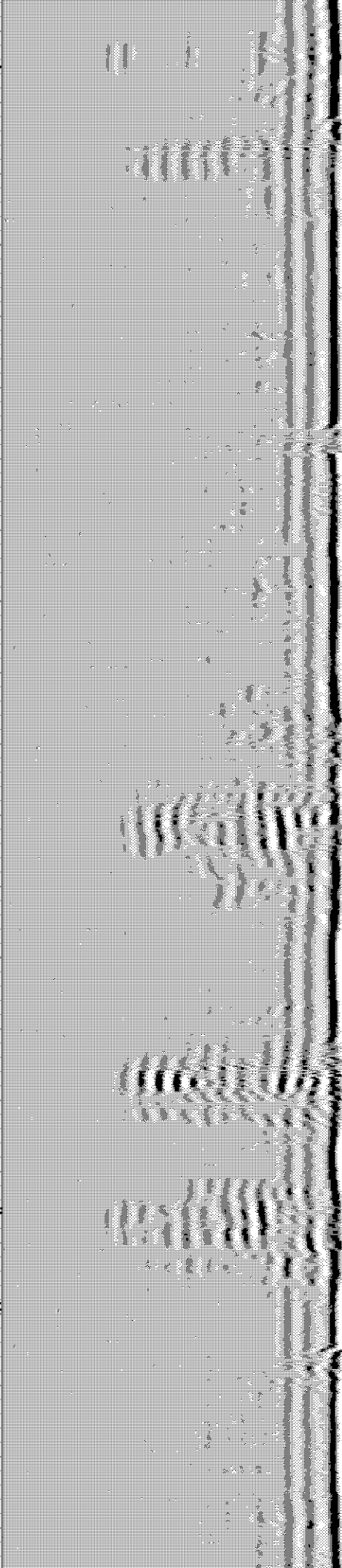
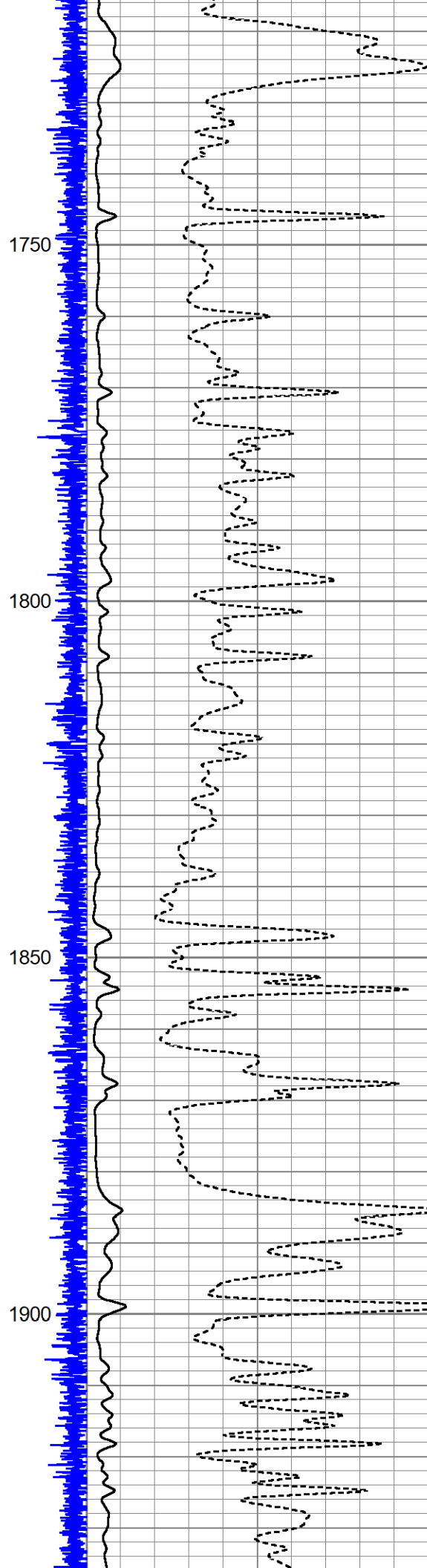
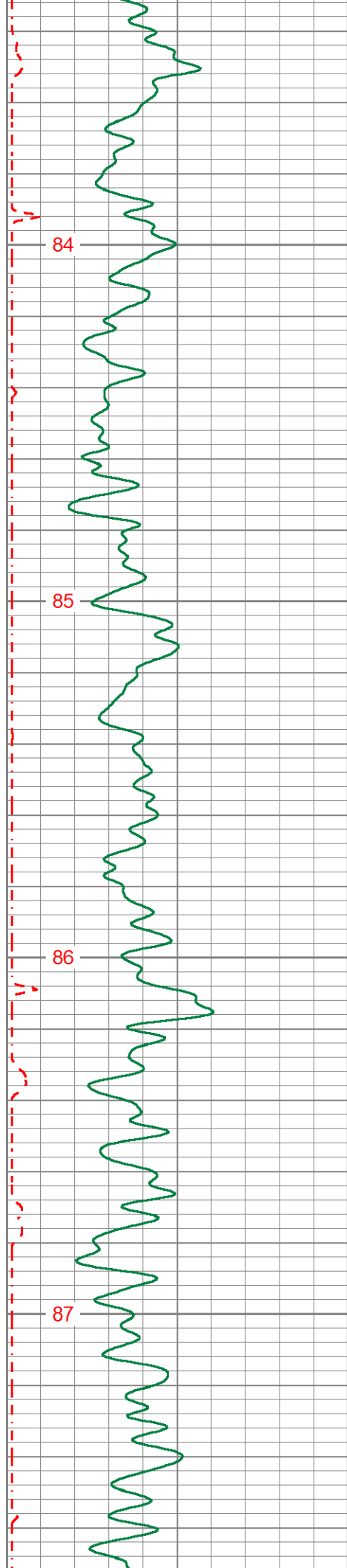


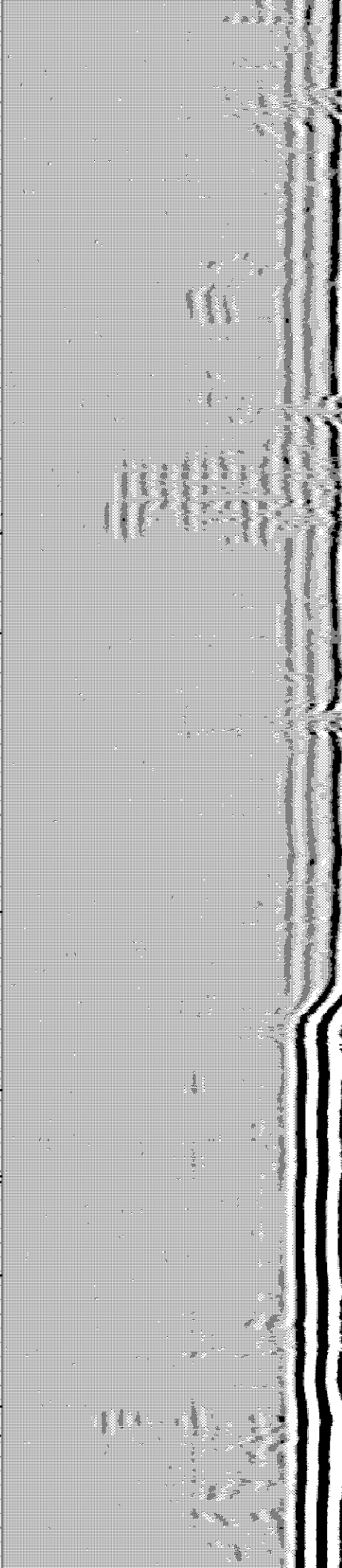
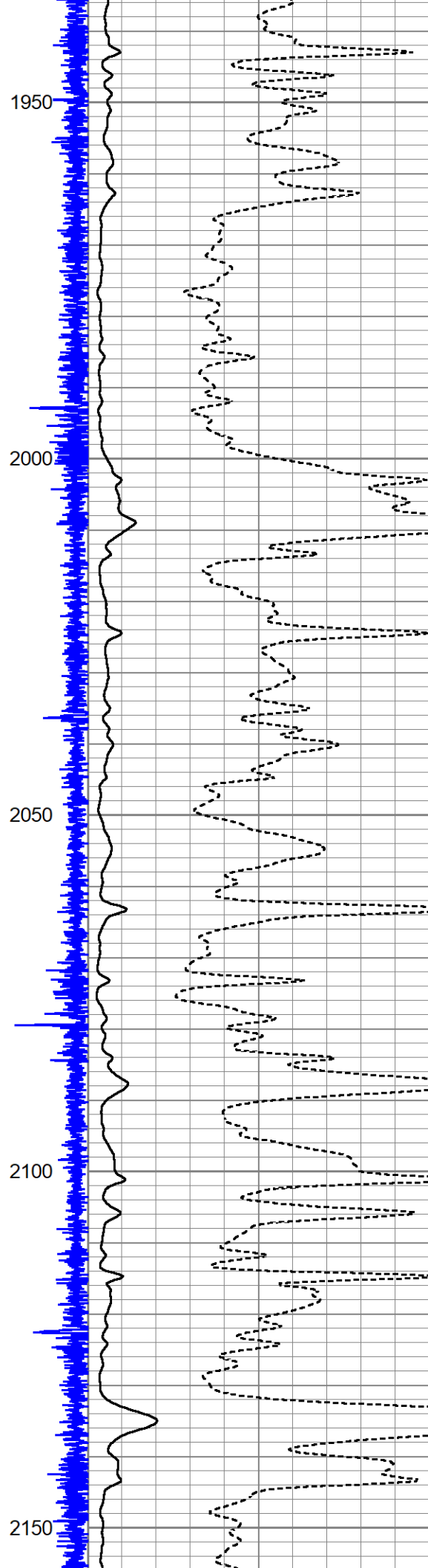
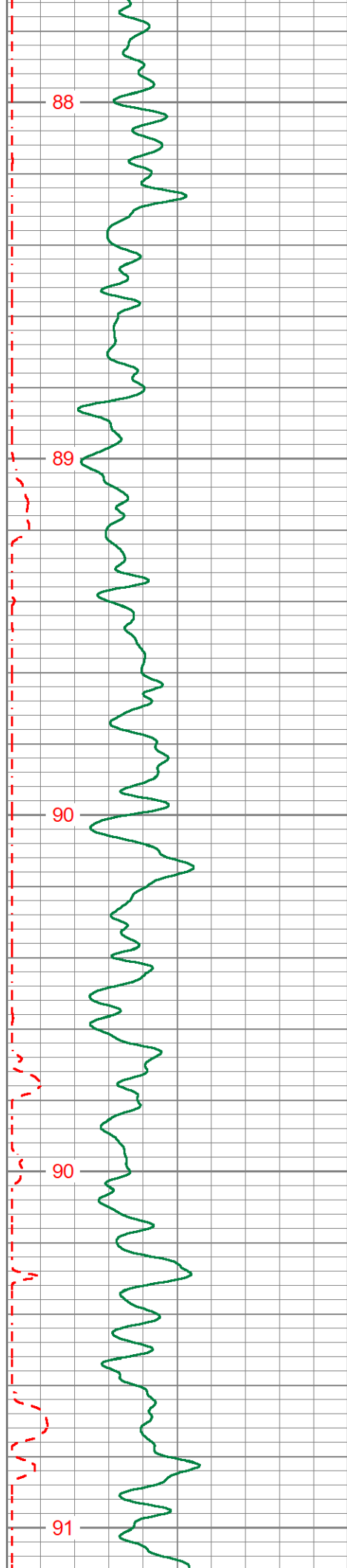




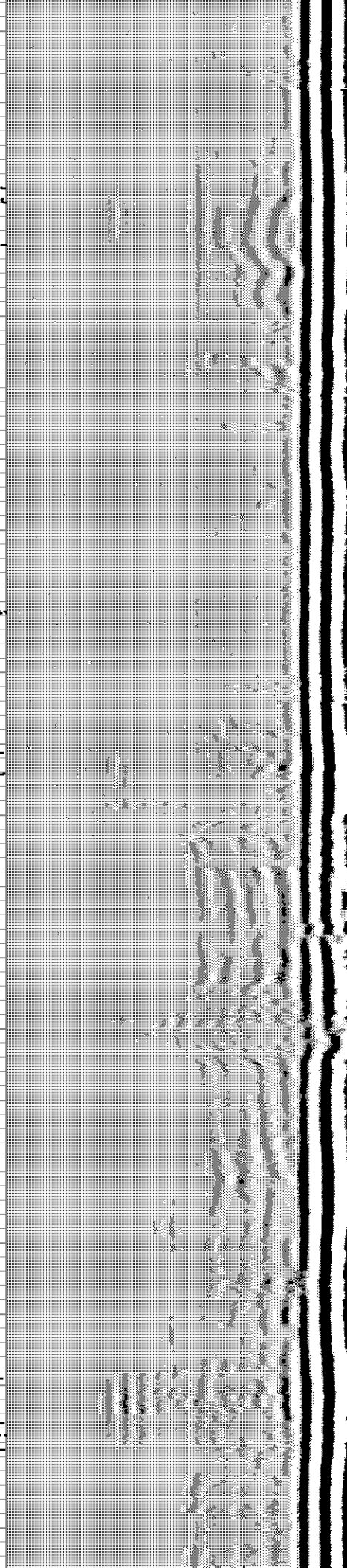
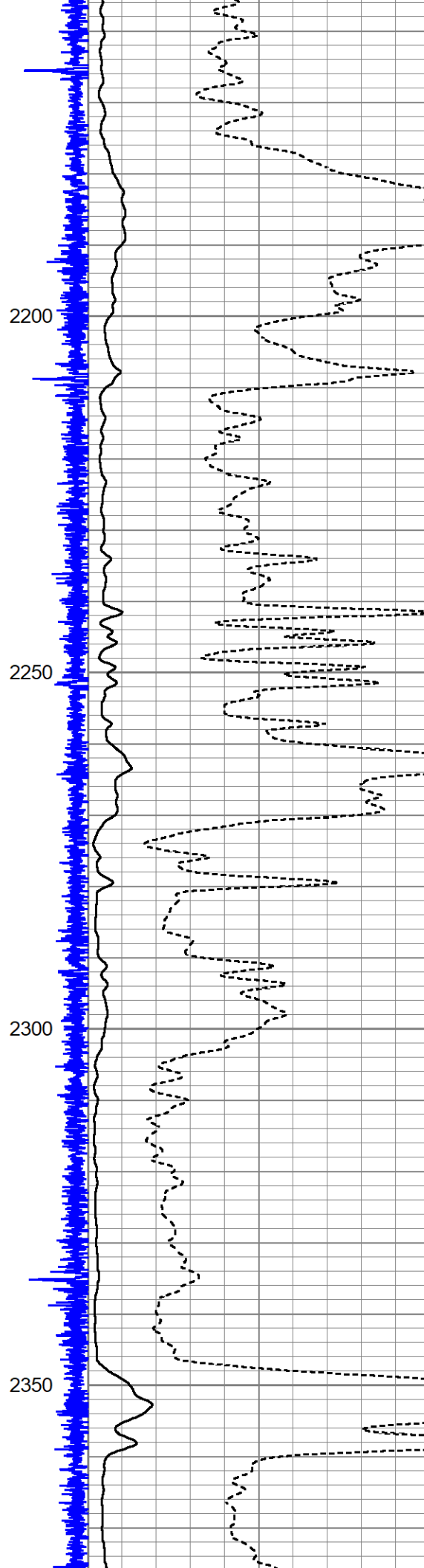
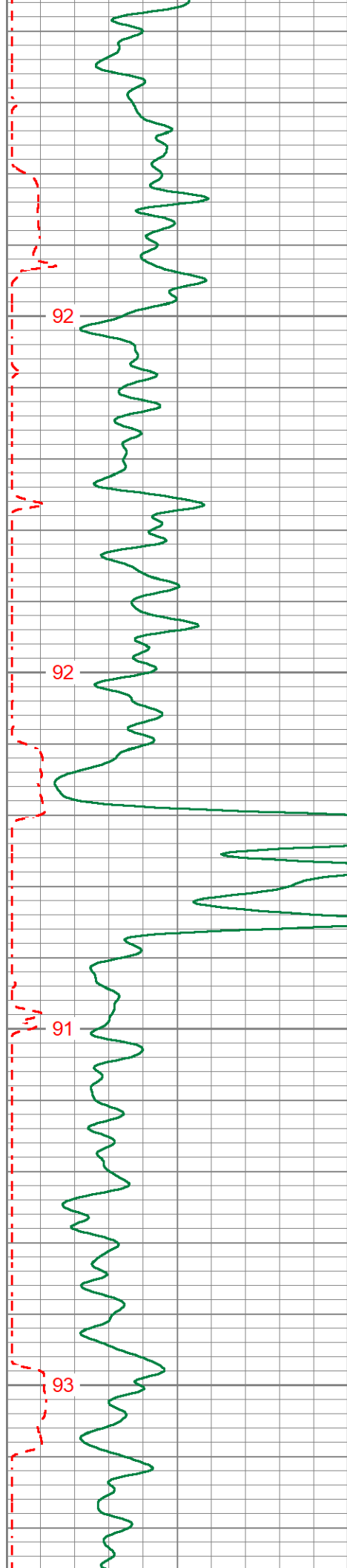


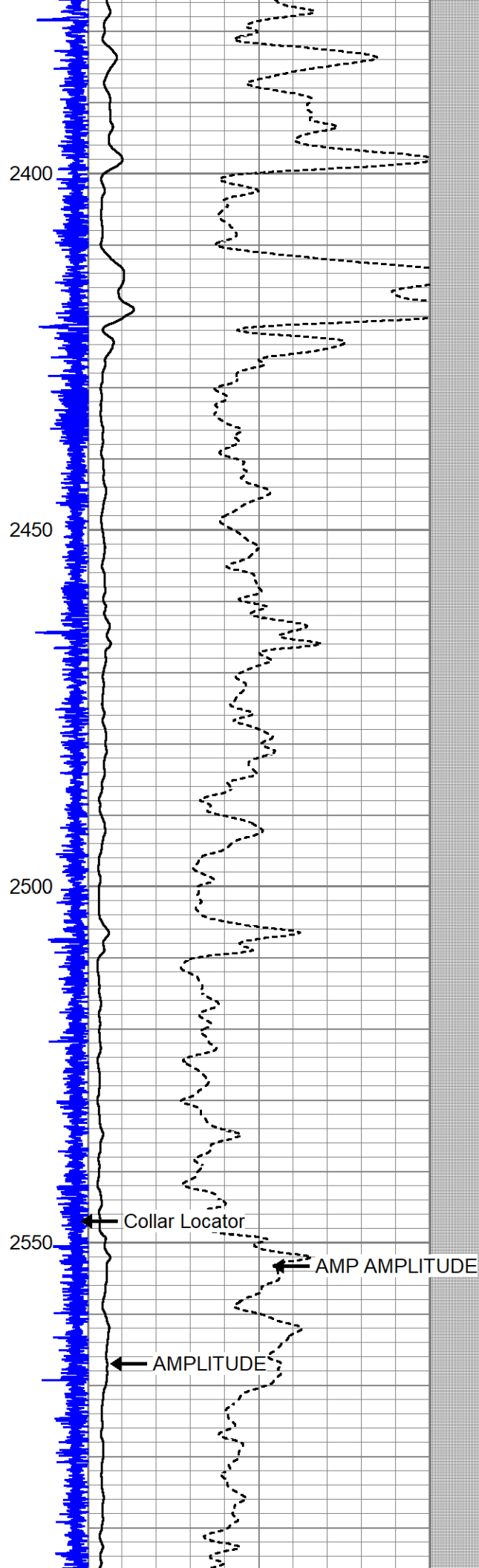
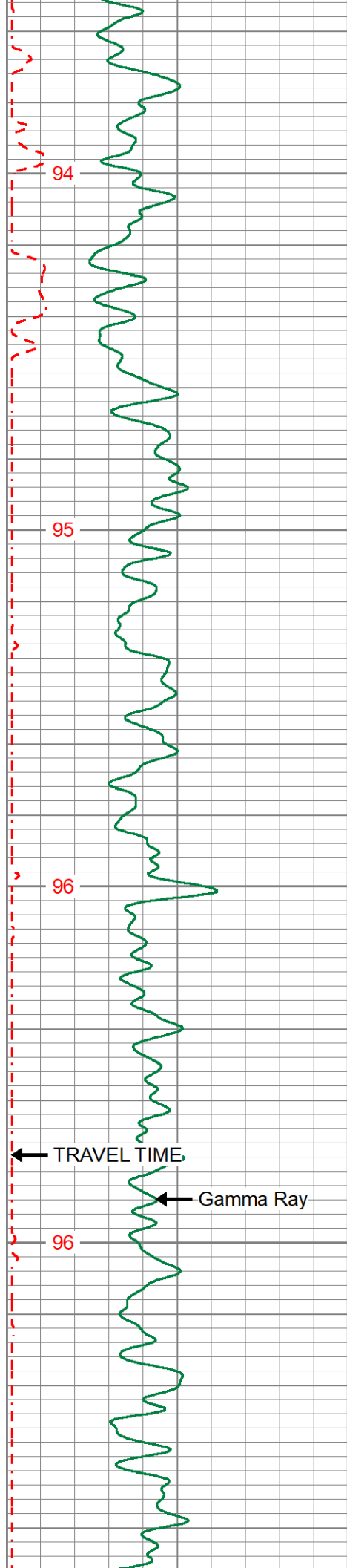




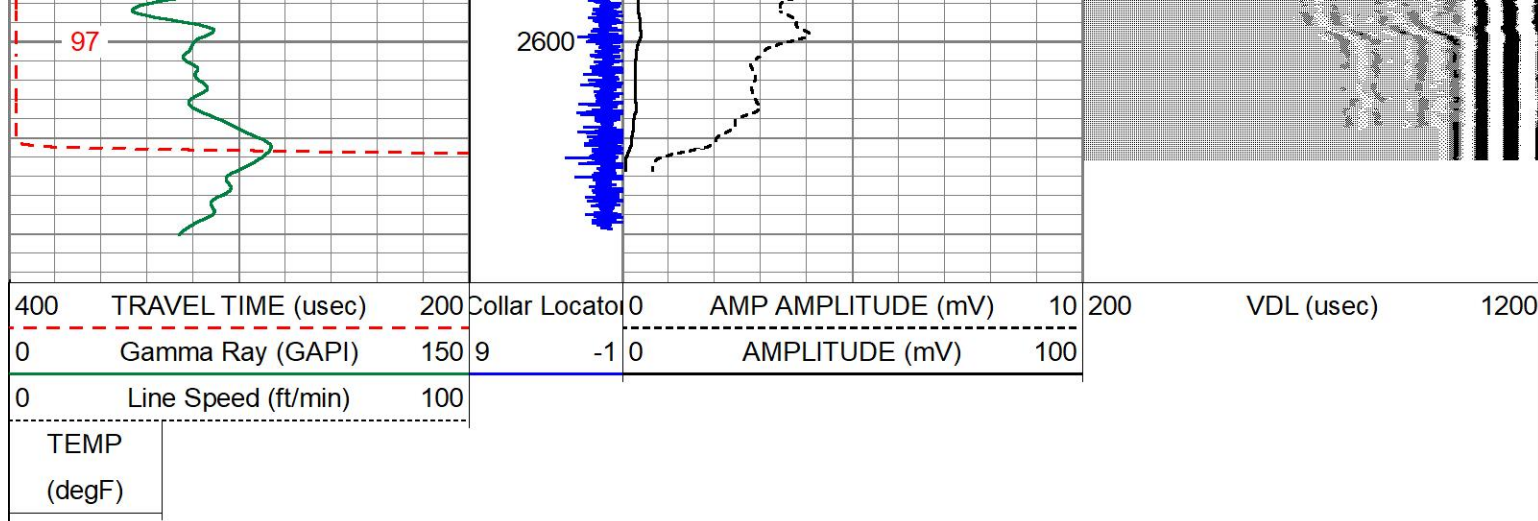






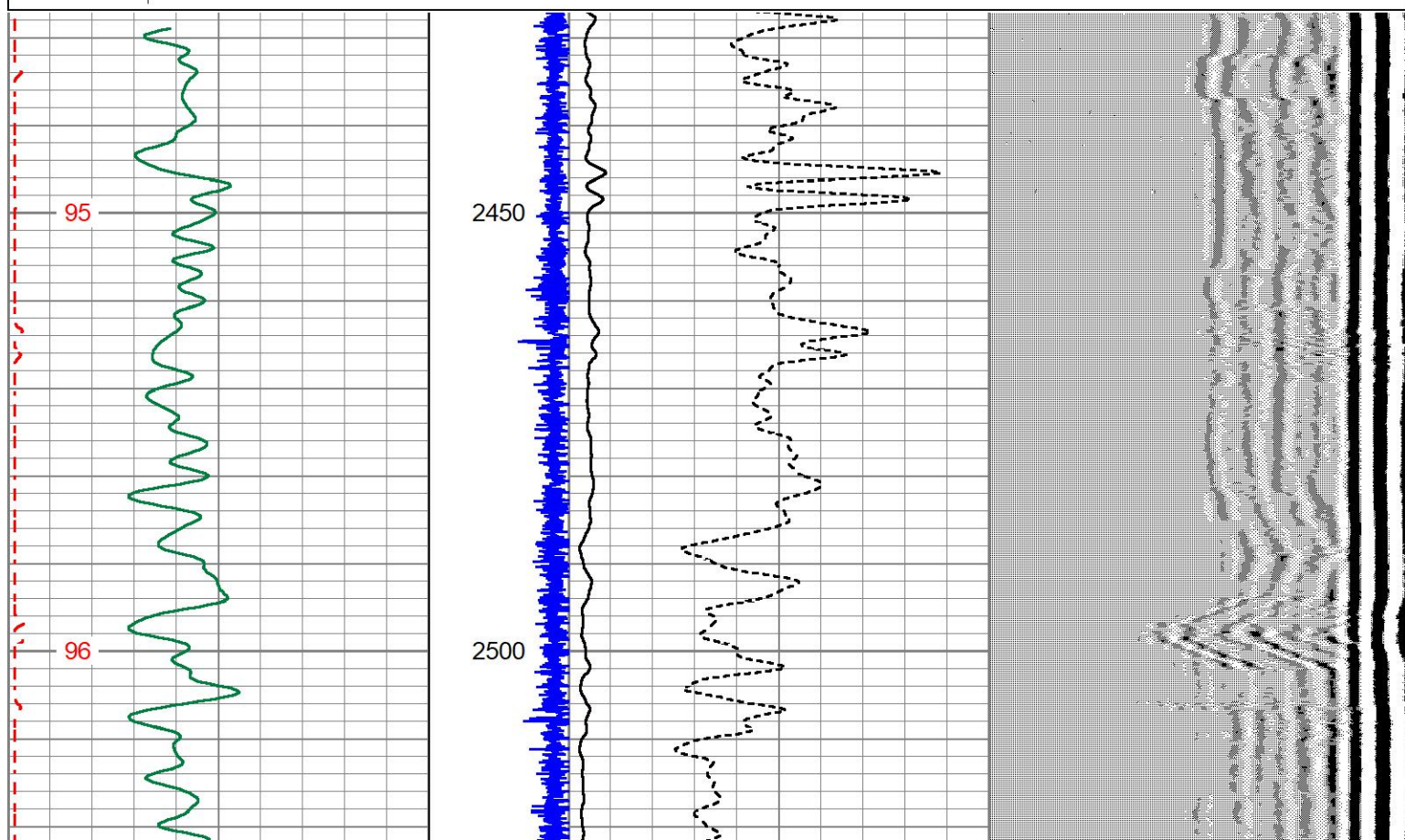
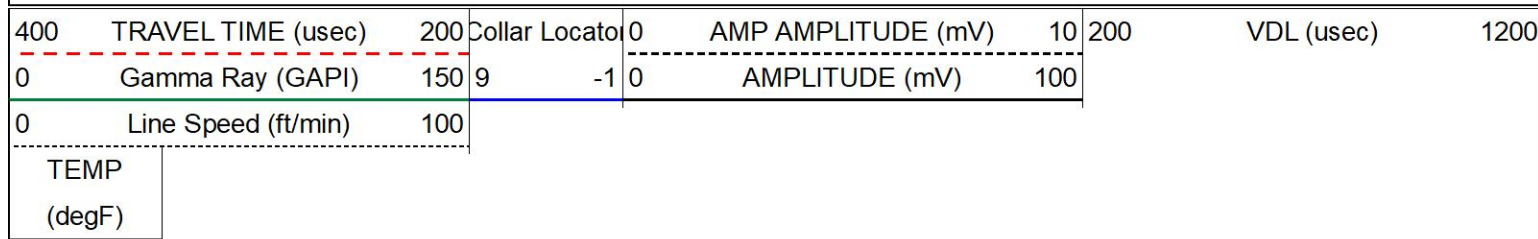




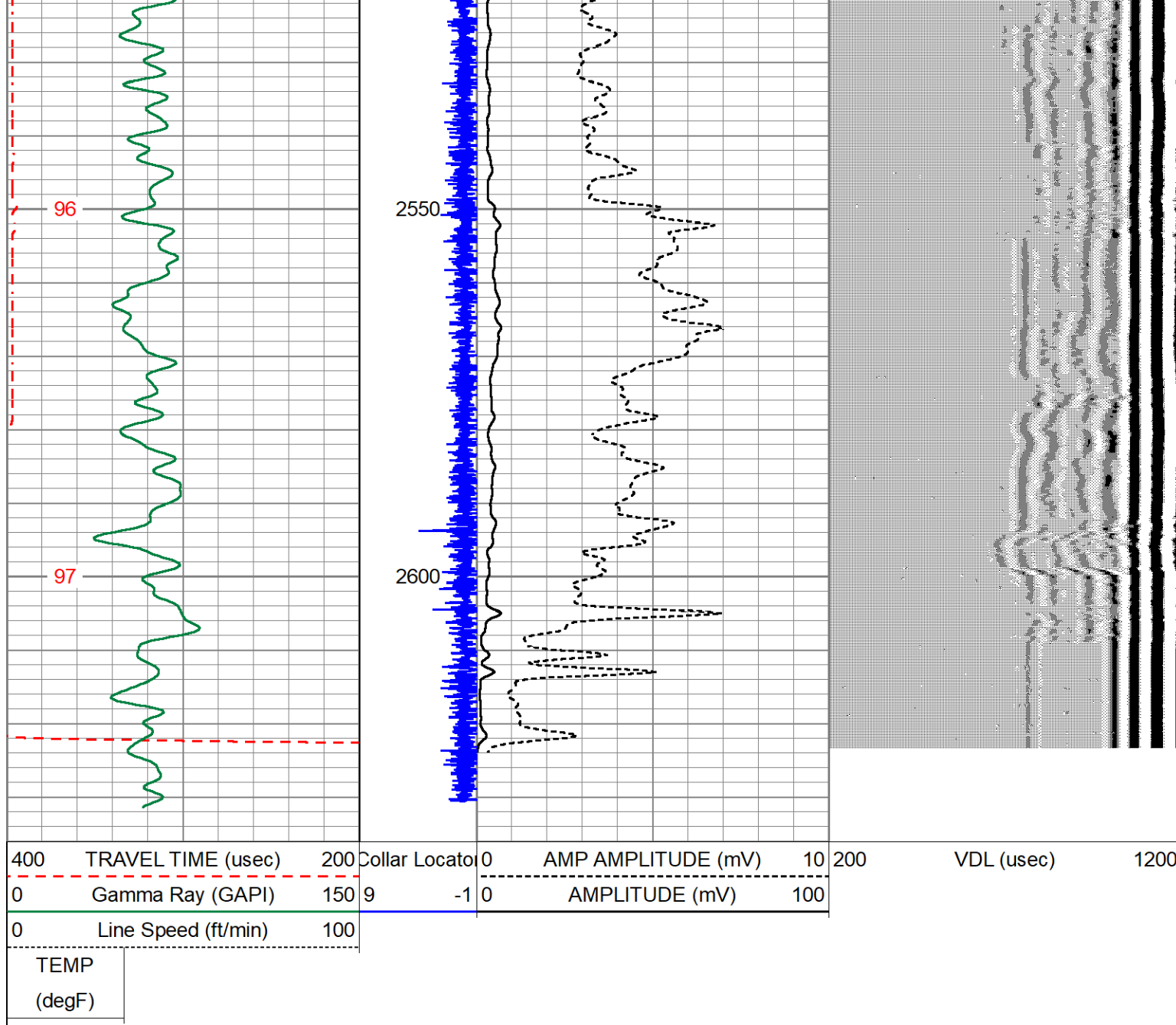


## REPEAT PASS

Database File: gmt\_marble\_6-65\_24-12\_1hn\_cbl.db  
 Dataset Pathname: pass5  
 Presentation Format: cbl\_kg  
 Dataset Creation: Wed May 04 10:08:15 2022  
 Charted by: Depth in Feet scaled 1:240







Calibration Report		
Database File	gmt_marble_6-65_24-12_1hn_cbl.db	
Dataset Pathname	CBL3	
Dataset Creation	Wed May 04 10:51:22 2022	
Gamma Ray Calibration Report		
Serial Number:	080831	
Tool Model:	Probe275dig	
Performed:	(Not Performed)	
Calibrator Value:	1.0	GAPI
Background Reading:	0.0	cps
Calibrator Reading:	1.0	cps
Sensitivity:	1.0000	GAPI/cps
Segmented Cement Bond Log Calibration Report		
Serial Number:	FW1304-128	
Tool Model:	Probe 2.75 Radii W/Temp	

Calibration Casing Diameter:	9.625	in
Calibration Depth:	546.417	ft

Master Calibration, performed (Derived):

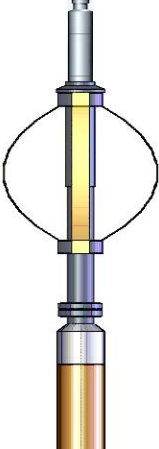
	Raw (v)		Calibrated (mv)		Results	
	Zero	Cal	Zero	Cal	Gain	Offset
3'	0.002	0.335	1.000	51.280	151.204	0.654
CAL	0.003	1.036				
5'	0.006	0.368	1.000	51.280	138.653	0.194
SUM						
S1	-0.003	0.336	0.000	100.000	295.239	0.810
S2	0.006	0.302	0.000	100.000	337.299	-2.016
S3	0.007	0.290	0.000	100.000	352.939	-2.340
S4	0.011	0.309	0.000	100.000	335.286	-3.722
S5	0.005	0.339	0.000	100.000	299.747	-1.624
S6	0.011	0.385	0.000	100.000	267.489	-3.006
S7	0.008	0.413	0.000	100.000	246.801	-2.000
S8	0.023	0.395	0.000	100.000	268.653	-6.050

Internal Reference Calibration, performed (Not Performed):

	Raw (v)		Calibrated (v)		Results	
	Zero	Cal	Zero	Cal	Gain	Offset
CAL	0.000	0.000	0.003	1.036	1.000	0.000

Air Zero Calibration, performed Wed Apr 27 09:05:54 2022:

	Raw (v)		Calibrated (v)		Results	
	Zero		Zero		Offset	
3'	0.000		0.000		0.000	
5'	0.000		0.000		0.000	
SUM						
S1	0.000		0.000		0.000	
S2	0.000		0.000		0.000	
S3	0.000		0.000		0.000	
S4	0.000		0.000		0.000	
S5	0.000		0.000		0.000	
S6	0.000		0.000		0.000	
S7	0.000		0.000		0.000	
S8	0.000		0.000		0.000	

Sensor	Offset (ft)	Schematic	Description	Length (ft)	O.D. (in)	Weight (lb)
			CHD-Titan Titan 1 7/16" GO Cablehead	1.00	1.44	5.00
			CENT-Probe275 2.75" Centralizer	2.88	2.75	36.00

[illegible]