

# **VERDAD RESOURCES**

**WATTENBERG FIELD**

**1N-64W-19 ONION 1907 PAD**

**ONION 1907-06H**

**Plan A**

**Plan: Design #1**

## **Standard Planning Report**

**16 March, 2022**

Project: WATTENBERG FIELD  
Site: 1N-64W-19 ONION 1907 PAD  
Well: ONION 1907-06H  
Wellbore: Plan A  
Design: Design #1

# VERDAD RESOURCES

## CASING DETAILS

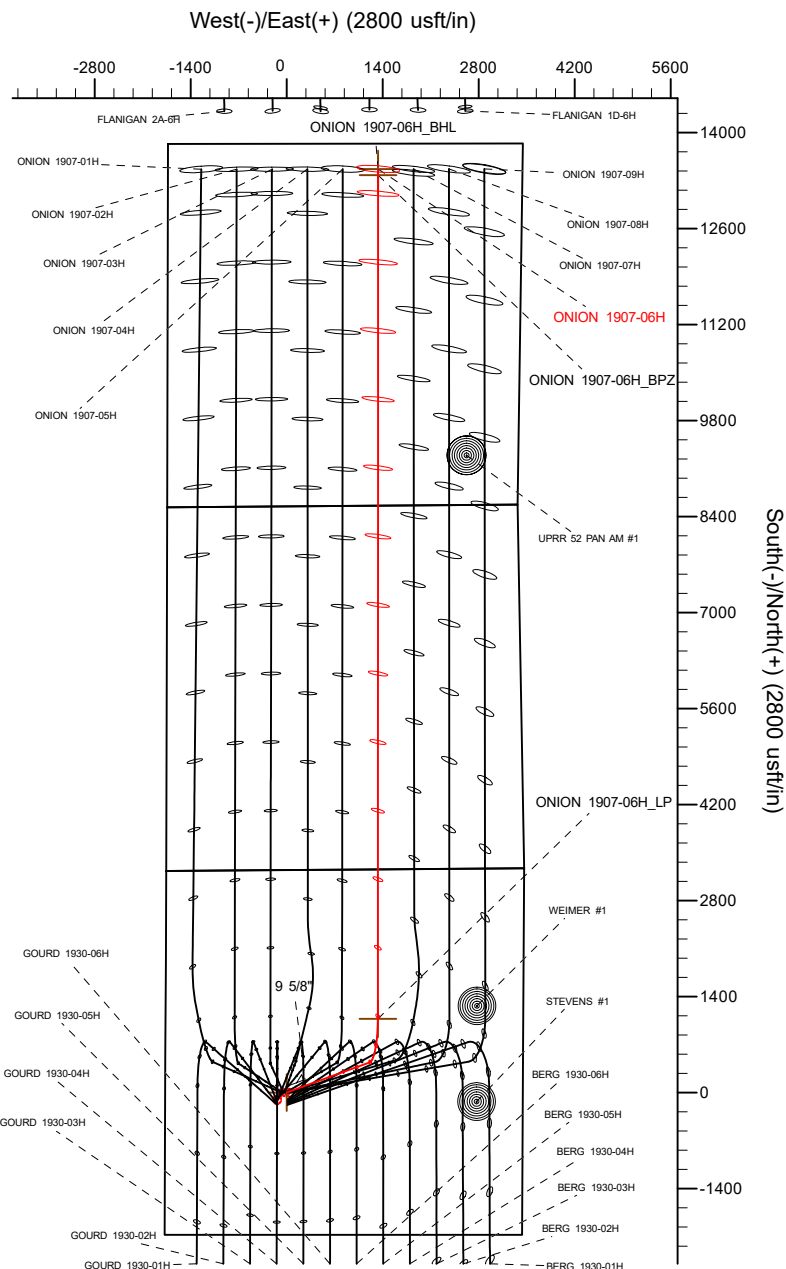
TVD	MD	Name	Size
2156.00	2185.58	9 5/8"	9-5/8

## SECTION DETAILS

MD	Inc	Azi	TVD	+N/-S	+E/-W	Dleg	TFace	VSect	Target
0.00	0.00	0.00	0.00	0.00	0.00	0.00	0.00	0.00	
501.00	0.00	0.00	501.00	0.00	0.00	0.00	0.00	0.00	
1120.00	12.38	70.07	1115.19	22.71	62.62	2.00	70.07	22.73	
6809.22	12.38	70.07	6672.12	438.48	1209.31	0.00	0.00	438.90	
7762.60	90.00	0.02	7250.00	1073.35	1328.80	9.00	-70.48	1073.81	
20156.40	90.00	0.02	7250.00	13467.14	1333.83	0.00	0.00	13467.61	ONION 1907-06H_BHL

## WELLBORE TARGET DETAILS (LAT/LONG)

Name	TVD	+N/-S	+E/-W	Latitude	Longitude
ONION 1907-06H_SHL	0.00	0.00	0.00	40.035251	-104.596483
ONION 1907-06H_LP	7250.00	1073.35	1328.80	40.038198	-104.591737
ONION 1907-06H_BPZ	7250.00	13377.17	1333.80	40.071974	-104.591717
ONION 1907-06H_BHL	7250.00	13467.14	1333.83	40.072221	-104.591717

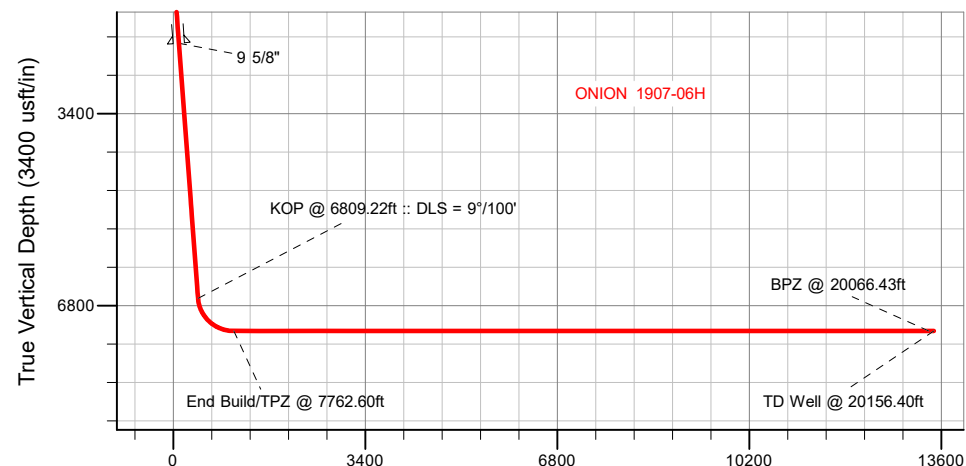


**BHL**  
**370' FNL**  
**2104' FEL**

**BPZ**  
**460' FNL**  
**2103' FEL**

**TPZ**  
**2180' FNL**  
**2121' FEL**

**SHL**  
**2075' FSL**  
**1771' FWL**



Vertical Section at 0.02° (3400 usft/in)

<p>Azimuths to True North Magnetic North: 7.65° Magnetic Field Strength: 51700.5nT Dip Angle: 66.36° Date: 3/12/2022 Model: IGRF2020</p>	WELL DETAILS: ONION 1907-06H		
	GL = 5011'		
	RKB = 24' @ 5035.00usft (RIG)		
	Plan: Design #1 (ONION 1907-06H/Plan A)		
	Date: 3/16/2022		

## Planning Report

<b>Database:</b>	EDM 5000.16 Single User Db	<b>Local Co-ordinate Reference:</b>	Well ONION 1907-06H
<b>Company:</b>	VERDAD RESOURCES	<b>TVD Reference:</b>	RKB = 24' @ 5035.00usft (RIG)
<b>Project:</b>	WATTENBERG FIELD	<b>MD Reference:</b>	RKB = 24' @ 5035.00usft (RIG)
<b>Site:</b>	1N-64W-19 ONION 1907 PAD	<b>North Reference:</b>	True
<b>Well:</b>	ONION 1907-06H	<b>Survey Calculation Method:</b>	Minimum Curvature
<b>Wellbore:</b>	Plan A		
<b>Design:</b>	Design #1		

<b>Project</b>	WATTENBERG FIELD		
<b>Map System:</b>	US State Plane 1983	<b>System Datum:</b>	Mean Sea Level
<b>Geo Datum:</b>	North American Datum 1983		
<b>Map Zone:</b>	Colorado Northern Zone		

<b>Site</b>	1N-64W-19 ONION 1907 PAD			
<b>Site Position:</b>		<b>Northing:</b>	1,256,976.07 usft	<b>Latitude:</b> 40.035252
<b>From:</b>	Lat/Long	<b>Easting:</b>	3,252,908.41 usft	<b>Longitude:</b> -104.596769
<b>Position Uncertainty:</b>	0.00 usft	<b>Slot Radius:</b>	13-3/16 "	

<b>Well</b>	ONION 1907-06H			
<b>Well Position</b>	<b>+N/-S</b>	0.00 usft	<b>Northing:</b>	1,256,976.84 usft
	<b>+E/-W</b>	0.00 usft	<b>Easting:</b>	3,252,988.40 usft
<b>Position Uncertainty</b>		3.28 usft	<b>Wellhead Elevation:</b>	usft
<b>Grid Convergence:</b>		0.58 °	<b>Ground Level:</b>	5,011.00 usft

<b>Wellbore</b>	Plan A				
<b>Magnetics</b>	<b>Model Name</b>	<b>Sample Date</b>	<b>Declination (°)</b>	<b>Dip Angle (°)</b>	<b>Field Strength (nT)</b>
	IGRF202013	3/12/2022	7.65	66.36	51,700.54820407

<b>Design</b>	Design #1				
<b>Audit Notes:</b>					
<b>Version:</b>		<b>Phase:</b>	PLAN	<b>Tie On Depth:</b>	0.00
<b>Vertical Section:</b>	<b>Depth From (TVD) (usft)</b>	<b>+N/-S (usft)</b>	<b>+E/-W (usft)</b>	<b>Direction (°)</b>	
	0.00	0.00	0.00	0.02	

<b>Plan Survey Tool Program</b>	<b>Date</b>	3/16/2022			
<b>Depth From (usft)</b>	<b>Depth To (usft)</b>	<b>Survey (Wellbore)</b>	<b>Tool Name</b>	<b>Remarks</b>	
1	0.00	2,156.00	Design #1 (Plan A)	ISCWSA MWD	
				Fixed:v2:standard declination	
2	2,156.00	20,156.40	Design #1 (Plan A)	ISCWSA MWD	
				Fixed:v2:standard declination	

Planning Report

Database:	EDM 5000.16 Single User Db	Local Co-ordinate Reference:	Well ONION 1907-06H
Company:	VERDAD RESOURCES	TVD Reference:	RKB = 24' @ 5035.00usft (RIG)
Project:	WATTENBERG FIELD	MD Reference:	RKB = 24' @ 5035.00usft (RIG)
Site:	1N-64W-19 ONION 1907 PAD	North Reference:	True
Well:	ONION 1907-06H	Survey Calculation Method:	Minimum Curvature
Wellbore:	Plan A		
Design:	Design #1		

Plan Sections										
Measured Depth (usft)	Inclination (°)	Azimuth (°)	Vertical Depth (usft)	+N/-S (usft)	+E/-W (usft)	Dogleg Rate (°/100usft)	Build Rate (°/100usft)	Turn Rate (°/100usft)	TFO (°)	Target
0.00	0.00	0.00	0.00	0.00	0.00	0.00	0.00	0.00	0.00	
501.00	0.00	0.00	501.00	0.00	0.00	0.00	0.00	0.00	0.00	
1,120.00	12.38	70.07	1,115.19	22.71	62.62	2.00	2.00	0.00	70.07	
6,809.22	12.38	70.07	6,672.12	438.48	1,209.31	0.00	0.00	0.00	0.00	
7,762.60	90.00	0.02	7,250.00	1,073.35	1,328.80	9.00	8.14	-7.35	-70.48	
20,156.40	90.00	0.02	7,250.00	13,467.14	1,333.83	0.00	0.00	0.00	0.00	ONION 1907-06H_BH

## Planning Report

<b>Database:</b>	EDM 5000.16 Single User Db	<b>Local Co-ordinate Reference:</b>	Well ONION 1907-06H
<b>Company:</b>	VERDAD RESOURCES	<b>TVD Reference:</b>	RKB = 24' @ 5035.00usft (RIG)
<b>Project:</b>	WATTENBERG FIELD	<b>MD Reference:</b>	RKB = 24' @ 5035.00usft (RIG)
<b>Site:</b>	1N-64W-19 ONION 1907 PAD	<b>North Reference:</b>	True
<b>Well:</b>	ONION 1907-06H	<b>Survey Calculation Method:</b>	Minimum Curvature
<b>Wellbore:</b>	Plan A		
<b>Design:</b>	Design #1		

Planned Survey									
Measured Depth (usft)	Inclination (°)	Azimuth (°)	Vertical Depth (usft)	+N/-S (usft)	+E/-W (usft)	Vertical Section (usft)	Dogleg Rate (°/100usft)	Build Rate (°/100usft)	Turn Rate (°/100usft)
0.00	0.00	0.00	0.00	0.00	0.00	0.00	0.00	0.00	0.00
100.00	0.00	0.00	100.00	0.00	0.00	0.00	0.00	0.00	0.00
200.00	0.00	0.00	200.00	0.00	0.00	0.00	0.00	0.00	0.00
300.00	0.00	0.00	300.00	0.00	0.00	0.00	0.00	0.00	0.00
400.00	0.00	0.00	400.00	0.00	0.00	0.00	0.00	0.00	0.00
501.00	0.00	0.00	501.00	0.00	0.00	0.00	0.00	0.00	0.00
Begin Nudge @ 501.00ft									
600.00	1.98	70.07	599.98	0.58	1.61	0.58	2.00	2.00	0.00
700.00	3.98	70.07	699.84	2.36	6.50	2.36	2.00	2.00	0.00
800.00	5.98	70.07	799.46	5.31	14.66	5.32	2.00	2.00	0.00
900.00	7.98	70.07	898.71	9.46	26.08	9.47	2.00	2.00	0.00
1,000.00	9.98	70.07	997.48	14.78	40.75	14.79	2.00	2.00	0.00
1,100.00	11.98	70.07	1,095.64	21.27	58.66	21.29	2.00	2.00	0.00
1,120.00	12.38	70.07	1,115.19	22.71	62.62	22.73	2.00	2.00	0.00
Hold Tangent @ 1120.00ft									
1,200.00	12.38	70.07	1,193.33	28.55	78.75	28.58	0.00	0.00	0.00
1,300.00	12.38	70.07	1,291.01	35.86	98.90	35.90	0.00	0.00	0.00
1,400.00	12.38	70.07	1,388.68	43.17	119.06	43.21	0.00	0.00	0.00
1,500.00	12.38	70.07	1,486.36	50.48	139.22	50.53	0.00	0.00	0.00
1,600.00	12.38	70.07	1,584.03	57.79	159.37	57.84	0.00	0.00	0.00
1,700.00	12.38	70.07	1,681.71	65.09	179.53	65.16	0.00	0.00	0.00
1,800.00	12.38	70.07	1,779.38	72.40	199.68	72.47	0.00	0.00	0.00
1,900.00	12.38	70.07	1,877.06	79.71	219.84	79.79	0.00	0.00	0.00
2,000.00	12.38	70.07	1,974.73	87.02	239.99	87.10	0.00	0.00	0.00
2,100.00	12.38	70.07	2,072.41	94.33	260.15	94.42	0.00	0.00	0.00
2,185.58	12.38	70.07	2,156.00	100.58	277.40	100.68	0.00	0.00	0.00
9 5/8"									
2,200.00	12.38	70.07	2,170.08	101.63	280.30	101.73	0.00	0.00	0.00
2,300.00	12.38	70.07	2,267.76	108.94	300.46	109.05	0.00	0.00	0.00
2,400.00	12.38	70.07	2,365.43	116.25	320.61	116.36	0.00	0.00	0.00
2,500.00	12.38	70.07	2,463.11	123.56	340.77	123.68	0.00	0.00	0.00
2,600.00	12.38	70.07	2,560.78	130.87	360.93	130.99	0.00	0.00	0.00
2,700.00	12.38	70.07	2,658.46	138.17	381.08	138.31	0.00	0.00	0.00
2,800.00	12.38	70.07	2,756.13	145.48	401.24	145.62	0.00	0.00	0.00
2,900.00	12.38	70.07	2,853.80	152.79	421.39	152.94	0.00	0.00	0.00
3,000.00	12.38	70.07	2,951.48	160.10	441.55	160.25	0.00	0.00	0.00
3,100.00	12.38	70.07	3,049.15	167.41	461.70	167.57	0.00	0.00	0.00
3,200.00	12.38	70.07	3,146.83	174.72	481.86	174.88	0.00	0.00	0.00
3,300.00	12.38	70.07	3,244.50	182.02	502.01	182.20	0.00	0.00	0.00
3,400.00	12.38	70.07	3,342.18	189.33	522.17	189.51	0.00	0.00	0.00
3,500.00	12.38	70.07	3,439.85	196.64	542.32	196.83	0.00	0.00	0.00
3,600.00	12.38	70.07	3,537.53	203.95	562.48	204.14	0.00	0.00	0.00
3,700.00	12.38	70.07	3,635.20	211.26	582.63	211.46	0.00	0.00	0.00
3,800.00	12.38	70.07	3,732.88	218.56	602.79	218.77	0.00	0.00	0.00
3,900.00	12.38	70.07	3,830.55	225.87	622.95	226.09	0.00	0.00	0.00
4,000.00	12.38	70.07	3,928.23	233.18	643.10	233.40	0.00	0.00	0.00
4,100.00	12.38	70.07	4,025.90	240.49	663.26	240.72	0.00	0.00	0.00
4,200.00	12.38	70.07	4,123.58	247.80	683.41	248.04	0.00	0.00	0.00
4,300.00	12.38	70.07	4,221.25	255.10	703.57	255.35	0.00	0.00	0.00
4,400.00	12.38	70.07	4,318.93	262.41	723.72	262.67	0.00	0.00	0.00
4,500.00	12.38	70.07	4,416.60	269.72	743.88	269.98	0.00	0.00	0.00
4,600.00	12.38	70.07	4,514.27	277.03	764.03	277.30	0.00	0.00	0.00
4,700.00	12.38	70.07	4,611.95	284.34	784.19	284.61	0.00	0.00	0.00

## Planning Report

<b>Database:</b>	EDM 5000.16 Single User Db	<b>Local Co-ordinate Reference:</b>	Well ONION 1907-06H
<b>Company:</b>	VERDAD RESOURCES	<b>TVD Reference:</b>	RKB = 24' @ 5035.00usft (RIG)
<b>Project:</b>	WATTENBERG FIELD	<b>MD Reference:</b>	RKB = 24' @ 5035.00usft (RIG)
<b>Site:</b>	1N-64W-19 ONION 1907 PAD	<b>North Reference:</b>	True
<b>Well:</b>	ONION 1907-06H	<b>Survey Calculation Method:</b>	Minimum Curvature
<b>Wellbore:</b>	Plan A		
<b>Design:</b>	Design #1		

Planned Survey									
Measured Depth (usft)	Inclination (°)	Azimuth (°)	Vertical Depth (usft)	+N/-S (usft)	+E/-W (usft)	Vertical Section (usft)	Dogleg Rate (°/100usft)	Build Rate (°/100usft)	Turn Rate (°/100usft)
4,800.00	12.38	70.07	4,709.62	291.65	804.34	291.93	0.00	0.00	0.00
4,900.00	12.38	70.07	4,807.30	298.95	824.50	299.24	0.00	0.00	0.00
5,000.00	12.38	70.07	4,904.97	306.26	844.66	306.56	0.00	0.00	0.00
5,100.00	12.38	70.07	5,002.65	313.57	864.81	313.87	0.00	0.00	0.00
5,200.00	12.38	70.07	5,100.32	320.88	884.97	321.19	0.00	0.00	0.00
5,300.00	12.38	70.07	5,198.00	328.19	905.12	328.50	0.00	0.00	0.00
5,400.00	12.38	70.07	5,295.67	335.49	925.28	335.82	0.00	0.00	0.00
5,500.00	12.38	70.07	5,393.35	342.80	945.43	343.13	0.00	0.00	0.00
5,600.00	12.38	70.07	5,491.02	350.11	965.59	350.45	0.00	0.00	0.00
5,700.00	12.38	70.07	5,588.70	357.42	985.74	357.76	0.00	0.00	0.00
5,800.00	12.38	70.07	5,686.37	364.73	1,005.90	365.08	0.00	0.00	0.00
5,900.00	12.38	70.07	5,784.05	372.03	1,026.05	372.39	0.00	0.00	0.00
6,000.00	12.38	70.07	5,881.72	379.34	1,046.21	379.71	0.00	0.00	0.00
6,100.00	12.38	70.07	5,979.40	386.65	1,066.37	387.02	0.00	0.00	0.00
6,200.00	12.38	70.07	6,077.07	393.96	1,086.52	394.34	0.00	0.00	0.00
6,300.00	12.38	70.07	6,174.75	401.27	1,106.68	401.65	0.00	0.00	0.00
6,400.00	12.38	70.07	6,272.42	408.57	1,126.83	408.97	0.00	0.00	0.00
6,500.00	12.38	70.07	6,370.09	415.88	1,146.99	416.28	0.00	0.00	0.00
6,600.00	12.38	70.07	6,467.77	423.19	1,167.14	423.60	0.00	0.00	0.00
6,700.00	12.38	70.07	6,565.44	430.50	1,187.30	430.91	0.00	0.00	0.00
6,809.22	12.38	70.07	6,672.12	438.48	1,209.31	438.90	0.00	0.00	0.00
<b>KOP @ 6809.22ft :: DLS = 9°/100'</b>									
6,850.00	14.03	55.66	6,711.84	442.76	1,217.51	443.19	9.00	4.05	-35.33
6,900.00	16.93	42.69	6,760.03	451.54	1,227.45	451.97	9.00	5.80	-25.95
6,950.00	20.41	33.71	6,807.40	464.15	1,237.23	464.58	9.00	6.95	-17.96
7,000.00	24.21	27.34	6,853.66	480.51	1,246.78	480.95	9.00	7.60	-12.73
7,050.00	28.21	22.65	6,898.51	500.53	1,256.05	500.97	9.00	8.00	-9.38
7,100.00	32.33	19.05	6,941.69	524.09	1,264.96	524.53	9.00	8.24	-7.19
7,150.00	36.53	16.20	6,982.93	551.03	1,273.48	551.47	9.00	8.40	-5.71
7,200.00	40.79	13.86	7,021.97	581.19	1,281.55	581.63	9.00	8.51	-4.67
7,250.00	45.08	11.90	7,058.57	614.38	1,289.11	614.83	9.00	8.59	-3.93
7,300.00	49.41	10.21	7,092.50	650.41	1,296.13	650.86	9.00	8.65	-3.38
7,350.00	53.76	8.72	7,123.57	689.04	1,302.56	689.49	9.00	8.70	-2.97
7,400.00	58.12	7.40	7,151.57	730.04	1,308.35	730.50	9.00	8.73	-2.65
7,450.00	62.50	6.19	7,176.33	773.16	1,313.48	773.62	9.00	8.75	-2.41
7,500.00	66.88	5.08	7,197.70	818.13	1,317.90	818.59	9.00	8.77	-2.23
7,550.00	71.28	4.03	7,215.55	864.68	1,321.61	865.14	9.00	8.79	-2.09
7,600.00	75.67	3.04	7,229.77	912.51	1,324.56	912.97	9.00	8.80	-1.98
7,650.00	80.08	2.09	7,240.27	961.33	1,326.74	961.79	9.00	8.81	-1.90
7,700.00	84.48	1.17	7,246.98	1,010.85	1,328.15	1,011.31	9.00	8.81	-1.85
7,750.00	88.89	0.25	7,249.87	1,060.75	1,328.77	1,061.21	9.00	8.81	-1.83
7,762.60	90.00	0.02	7,250.00	1,073.35	1,328.80	1,073.81	9.00	8.81	-1.82
<b>End Build/TPZ @ 7762.60ft</b>									
7,800.00	90.00	0.02	7,250.00	1,110.74	1,328.81	1,111.21	0.00	0.00	0.00
7,900.00	90.00	0.02	7,250.00	1,210.74	1,328.85	1,211.21	0.00	0.00	0.00
8,000.00	90.00	0.02	7,250.00	1,310.74	1,328.89	1,311.21	0.00	0.00	0.00
8,100.00	90.00	0.02	7,250.00	1,410.74	1,328.93	1,411.21	0.00	0.00	0.00
8,200.00	90.00	0.02	7,250.00	1,510.74	1,328.97	1,511.21	0.00	0.00	0.00
8,300.00	90.00	0.02	7,250.00	1,610.74	1,329.01	1,611.21	0.00	0.00	0.00
8,400.00	90.00	0.02	7,250.00	1,710.74	1,329.06	1,711.21	0.00	0.00	0.00
8,500.00	90.00	0.02	7,250.00	1,810.74	1,329.10	1,811.21	0.00	0.00	0.00
8,600.00	90.00	0.02	7,250.00	1,910.74	1,329.14	1,911.21	0.00	0.00	0.00
8,700.00	90.00	0.02	7,250.00	2,010.74	1,329.18	2,011.21	0.00	0.00	0.00
8,800.00	90.00	0.02	7,250.00	2,110.74	1,329.22	2,111.21	0.00	0.00	0.00

## Planning Report

<b>Database:</b>	EDM 5000.16 Single User Db	<b>Local Co-ordinate Reference:</b>	Well ONION 1907-06H
<b>Company:</b>	VERDAD RESOURCES	<b>TVD Reference:</b>	RKB = 24' @ 5035.00usft (RIG)
<b>Project:</b>	WATTENBERG FIELD	<b>MD Reference:</b>	RKB = 24' @ 5035.00usft (RIG)
<b>Site:</b>	1N-64W-19 ONION 1907 PAD	<b>North Reference:</b>	True
<b>Well:</b>	ONION 1907-06H	<b>Survey Calculation Method:</b>	Minimum Curvature
<b>Wellbore:</b>	Plan A		
<b>Design:</b>	Design #1		

Planned Survey										
Measured Depth (usft)	Inclination (°)	Azimuth (°)	Vertical Depth (usft)	+N/-S (usft)	+E/-W (usft)	Vertical Section (usft)	Dogleg Rate (°/100usft)	Build Rate (°/100usft)	Turn Rate (°/100usft)	
8,900.00	90.00	0.02	7,250.00	2,210.74	1,329.26	2,211.21	0.00	0.00	0.00	
9,000.00	90.00	0.02	7,250.00	2,310.74	1,329.30	2,311.21	0.00	0.00	0.00	
9,100.00	90.00	0.02	7,250.00	2,410.74	1,329.34	2,411.21	0.00	0.00	0.00	
9,200.00	90.00	0.02	7,250.00	2,510.74	1,329.38	2,511.21	0.00	0.00	0.00	
9,300.00	90.00	0.02	7,250.00	2,610.74	1,329.42	2,611.21	0.00	0.00	0.00	
9,400.00	90.00	0.02	7,250.00	2,710.74	1,329.46	2,711.21	0.00	0.00	0.00	
9,500.00	90.00	0.02	7,250.00	2,810.74	1,329.50	2,811.21	0.00	0.00	0.00	
9,600.00	90.00	0.02	7,250.00	2,910.74	1,329.54	2,911.21	0.00	0.00	0.00	
9,700.00	90.00	0.02	7,250.00	3,010.74	1,329.58	3,011.21	0.00	0.00	0.00	
9,800.00	90.00	0.02	7,250.00	3,110.74	1,329.62	3,111.21	0.00	0.00	0.00	
9,900.00	90.00	0.02	7,250.00	3,210.74	1,329.66	3,211.21	0.00	0.00	0.00	
10,000.00	90.00	0.02	7,250.00	3,310.74	1,329.70	3,311.21	0.00	0.00	0.00	
10,100.00	90.00	0.02	7,250.00	3,410.74	1,329.75	3,411.21	0.00	0.00	0.00	
10,200.00	90.00	0.02	7,250.00	3,510.74	1,329.79	3,511.21	0.00	0.00	0.00	
10,300.00	90.00	0.02	7,250.00	3,610.74	1,329.83	3,611.21	0.00	0.00	0.00	
10,400.00	90.00	0.02	7,250.00	3,710.74	1,329.87	3,711.21	0.00	0.00	0.00	
10,500.00	90.00	0.02	7,250.00	3,810.74	1,329.91	3,811.21	0.00	0.00	0.00	
10,600.00	90.00	0.02	7,250.00	3,910.74	1,329.95	3,911.21	0.00	0.00	0.00	
10,700.00	90.00	0.02	7,250.00	4,010.74	1,329.99	4,011.21	0.00	0.00	0.00	
10,800.00	90.00	0.02	7,250.00	4,110.74	1,330.03	4,111.21	0.00	0.00	0.00	
10,900.00	90.00	0.02	7,250.00	4,210.74	1,330.07	4,211.21	0.00	0.00	0.00	
11,000.00	90.00	0.02	7,250.00	4,310.74	1,330.11	4,311.21	0.00	0.00	0.00	
11,100.00	90.00	0.02	7,250.00	4,410.74	1,330.15	4,411.21	0.00	0.00	0.00	
11,200.00	90.00	0.02	7,250.00	4,510.74	1,330.19	4,511.21	0.00	0.00	0.00	
11,300.00	90.00	0.02	7,250.00	4,610.74	1,330.23	4,611.21	0.00	0.00	0.00	
11,400.00	90.00	0.02	7,250.00	4,710.74	1,330.27	4,711.21	0.00	0.00	0.00	
11,500.00	90.00	0.02	7,250.00	4,810.74	1,330.31	4,811.21	0.00	0.00	0.00	
11,600.00	90.00	0.02	7,250.00	4,910.74	1,330.35	4,911.21	0.00	0.00	0.00	
11,700.00	90.00	0.02	7,250.00	5,010.74	1,330.39	5,011.21	0.00	0.00	0.00	
11,800.00	90.00	0.02	7,250.00	5,110.74	1,330.44	5,111.21	0.00	0.00	0.00	
11,900.00	90.00	0.02	7,250.00	5,210.74	1,330.48	5,211.21	0.00	0.00	0.00	
12,000.00	90.00	0.02	7,250.00	5,310.74	1,330.52	5,311.21	0.00	0.00	0.00	
12,100.00	90.00	0.02	7,250.00	5,410.74	1,330.56	5,411.21	0.00	0.00	0.00	
12,200.00	90.00	0.02	7,250.00	5,510.74	1,330.60	5,511.21	0.00	0.00	0.00	
12,300.00	90.00	0.02	7,250.00	5,610.74	1,330.64	5,611.21	0.00	0.00	0.00	
12,400.00	90.00	0.02	7,250.00	5,710.74	1,330.68	5,711.21	0.00	0.00	0.00	
12,500.00	90.00	0.02	7,250.00	5,810.74	1,330.72	5,811.21	0.00	0.00	0.00	
12,600.00	90.00	0.02	7,250.00	5,910.74	1,330.76	5,911.21	0.00	0.00	0.00	
12,700.00	90.00	0.02	7,250.00	6,010.74	1,330.80	6,011.21	0.00	0.00	0.00	
12,800.00	90.00	0.02	7,250.00	6,110.74	1,330.84	6,111.21	0.00	0.00	0.00	
12,900.00	90.00	0.02	7,250.00	6,210.74	1,330.88	6,211.21	0.00	0.00	0.00	
13,000.00	90.00	0.02	7,250.00	6,310.74	1,330.92	6,311.21	0.00	0.00	0.00	
13,100.00	90.00	0.02	7,250.00	6,410.74	1,330.96	6,411.21	0.00	0.00	0.00	
13,200.00	90.00	0.02	7,250.00	6,510.74	1,331.00	6,511.21	0.00	0.00	0.00	
13,300.00	90.00	0.02	7,250.00	6,610.74	1,331.04	6,611.21	0.00	0.00	0.00	
13,400.00	90.00	0.02	7,250.00	6,710.74	1,331.08	6,711.21	0.00	0.00	0.00	
13,500.00	90.00	0.02	7,250.00	6,810.74	1,331.12	6,811.21	0.00	0.00	0.00	
13,600.00	90.00	0.02	7,250.00	6,910.74	1,331.17	6,911.21	0.00	0.00	0.00	
13,700.00	90.00	0.02	7,250.00	7,010.74	1,331.21	7,011.21	0.00	0.00	0.00	
13,800.00	90.00	0.02	7,250.00	7,110.74	1,331.25	7,111.21	0.00	0.00	0.00	
13,900.00	90.00	0.02	7,250.00	7,210.74	1,331.29	7,211.21	0.00	0.00	0.00	
14,000.00	90.00	0.02	7,250.00	7,310.74	1,331.33	7,311.21	0.00	0.00	0.00	
14,100.00	90.00	0.02	7,250.00	7,410.74	1,331.37	7,411.21	0.00	0.00	0.00	
14,200.00	90.00	0.02	7,250.00	7,510.74	1,331.41	7,511.21	0.00	0.00	0.00	

## Planning Report

<b>Database:</b>	EDM 5000.16 Single User Db	<b>Local Co-ordinate Reference:</b>	Well ONION 1907-06H
<b>Company:</b>	VERDAD RESOURCES	<b>TVD Reference:</b>	RKB = 24' @ 5035.00usft (RIG)
<b>Project:</b>	WATTENBERG FIELD	<b>MD Reference:</b>	RKB = 24' @ 5035.00usft (RIG)
<b>Site:</b>	1N-64W-19 ONION 1907 PAD	<b>North Reference:</b>	True
<b>Well:</b>	ONION 1907-06H	<b>Survey Calculation Method:</b>	Minimum Curvature
<b>Wellbore:</b>	Plan A		
<b>Design:</b>	Design #1		

Planned Survey									
Measured Depth (usft)	Inclination (°)	Azimuth (°)	Vertical Depth (usft)	+N/-S (usft)	+E/-W (usft)	Vertical Section (usft)	Dogleg Rate (°/100usft)	Build Rate (°/100usft)	Turn Rate (°/100usft)
14,300.00	90.00	0.02	7,250.00	7,610.74	1,331.45	7,611.21	0.00	0.00	0.00
14,400.00	90.00	0.02	7,250.00	7,710.74	1,331.49	7,711.21	0.00	0.00	0.00
14,500.00	90.00	0.02	7,250.00	7,810.74	1,331.53	7,811.21	0.00	0.00	0.00
14,600.00	90.00	0.02	7,250.00	7,910.74	1,331.57	7,911.21	0.00	0.00	0.00
14,700.00	90.00	0.02	7,250.00	8,010.74	1,331.61	8,011.21	0.00	0.00	0.00
14,800.00	90.00	0.02	7,250.00	8,110.74	1,331.65	8,111.21	0.00	0.00	0.00
14,900.00	90.00	0.02	7,250.00	8,210.74	1,331.69	8,211.21	0.00	0.00	0.00
15,000.00	90.00	0.02	7,250.00	8,310.74	1,331.73	8,311.21	0.00	0.00	0.00
15,100.00	90.00	0.02	7,250.00	8,410.74	1,331.77	8,411.21	0.00	0.00	0.00
15,200.00	90.00	0.02	7,250.00	8,510.74	1,331.81	8,511.21	0.00	0.00	0.00
15,300.00	90.00	0.02	7,250.00	8,610.74	1,331.86	8,611.21	0.00	0.00	0.00
15,400.00	90.00	0.02	7,250.00	8,710.74	1,331.90	8,711.21	0.00	0.00	0.00
15,500.00	90.00	0.02	7,250.00	8,810.74	1,331.94	8,811.21	0.00	0.00	0.00
15,600.00	90.00	0.02	7,250.00	8,910.74	1,331.98	8,911.21	0.00	0.00	0.00
15,700.00	90.00	0.02	7,250.00	9,010.74	1,332.02	9,011.21	0.00	0.00	0.00
15,800.00	90.00	0.02	7,250.00	9,110.74	1,332.06	9,111.21	0.00	0.00	0.00
15,900.00	90.00	0.02	7,250.00	9,210.74	1,332.10	9,211.21	0.00	0.00	0.00
16,000.00	90.00	0.02	7,250.00	9,310.74	1,332.14	9,311.21	0.00	0.00	0.00
16,100.00	90.00	0.02	7,250.00	9,410.74	1,332.18	9,411.21	0.00	0.00	0.00
16,200.00	90.00	0.02	7,250.00	9,510.74	1,332.22	9,511.21	0.00	0.00	0.00
16,300.00	90.00	0.02	7,250.00	9,610.74	1,332.26	9,611.21	0.00	0.00	0.00
16,400.00	90.00	0.02	7,250.00	9,710.74	1,332.30	9,711.21	0.00	0.00	0.00
16,500.00	90.00	0.02	7,250.00	9,810.74	1,332.34	9,811.21	0.00	0.00	0.00
16,600.00	90.00	0.02	7,250.00	9,910.74	1,332.38	9,911.21	0.00	0.00	0.00
16,700.00	90.00	0.02	7,250.00	10,010.74	1,332.42	10,011.21	0.00	0.00	0.00
16,800.00	90.00	0.02	7,250.00	10,110.74	1,332.46	10,111.21	0.00	0.00	0.00
16,900.00	90.00	0.02	7,250.00	10,210.74	1,332.50	10,211.21	0.00	0.00	0.00
17,000.00	90.00	0.02	7,250.00	10,310.74	1,332.55	10,311.21	0.00	0.00	0.00
17,100.00	90.00	0.02	7,250.00	10,410.74	1,332.59	10,411.21	0.00	0.00	0.00
17,200.00	90.00	0.02	7,250.00	10,510.74	1,332.63	10,511.21	0.00	0.00	0.00
17,300.00	90.00	0.02	7,250.00	10,610.74	1,332.67	10,611.21	0.00	0.00	0.00
17,400.00	90.00	0.02	7,250.00	10,710.74	1,332.71	10,711.21	0.00	0.00	0.00
17,500.00	90.00	0.02	7,250.00	10,810.74	1,332.75	10,811.21	0.00	0.00	0.00
17,600.00	90.00	0.02	7,250.00	10,910.74	1,332.79	10,911.21	0.00	0.00	0.00
17,700.00	90.00	0.02	7,250.00	11,010.74	1,332.83	11,011.21	0.00	0.00	0.00
17,800.00	90.00	0.02	7,250.00	11,110.74	1,332.87	11,111.21	0.00	0.00	0.00
17,900.00	90.00	0.02	7,250.00	11,210.74	1,332.91	11,211.21	0.00	0.00	0.00
18,000.00	90.00	0.02	7,250.00	11,310.74	1,332.95	11,311.21	0.00	0.00	0.00
18,100.00	90.00	0.02	7,250.00	11,410.74	1,332.99	11,411.21	0.00	0.00	0.00
18,200.00	90.00	0.02	7,250.00	11,510.74	1,333.03	11,511.21	0.00	0.00	0.00
18,300.00	90.00	0.02	7,250.00	11,610.74	1,333.07	11,611.21	0.00	0.00	0.00
18,400.00	90.00	0.02	7,250.00	11,710.74	1,333.11	11,711.21	0.00	0.00	0.00
18,500.00	90.00	0.02	7,250.00	11,810.74	1,333.15	11,811.21	0.00	0.00	0.00
18,600.00	90.00	0.02	7,250.00	11,910.74	1,333.19	11,911.21	0.00	0.00	0.00
18,700.00	90.00	0.02	7,250.00	12,010.74	1,333.24	12,011.21	0.00	0.00	0.00
18,800.00	90.00	0.02	7,250.00	12,110.74	1,333.28	12,111.21	0.00	0.00	0.00
18,900.00	90.00	0.02	7,250.00	12,210.74	1,333.32	12,211.21	0.00	0.00	0.00
19,000.00	90.00	0.02	7,250.00	12,310.74	1,333.36	12,311.21	0.00	0.00	0.00
19,100.00	90.00	0.02	7,250.00	12,410.74	1,333.40	12,411.21	0.00	0.00	0.00
19,200.00	90.00	0.02	7,250.00	12,510.74	1,333.44	12,511.21	0.00	0.00	0.00
19,300.00	90.00	0.02	7,250.00	12,610.74	1,333.48	12,611.21	0.00	0.00	0.00
19,400.00	90.00	0.02	7,250.00	12,710.74	1,333.52	12,711.21	0.00	0.00	0.00
19,500.00	90.00	0.02	7,250.00	12,810.74	1,333.56	12,811.21	0.00	0.00	0.00
19,600.00	90.00	0.02	7,250.00	12,910.74	1,333.60	12,911.21	0.00	0.00	0.00



## Planning Report

<b>Database:</b>	EDM 5000.16 Single User Db	<b>Local Co-ordinate Reference:</b>	Well ONION 1907-06H
<b>Company:</b>	VERDAD RESOURCES	<b>TVD Reference:</b>	RKB = 24' @ 5035.00usft (RIG)
<b>Project:</b>	WATTENBERG FIELD	<b>MD Reference:</b>	RKB = 24' @ 5035.00usft (RIG)
<b>Site:</b>	1N-64W-19 ONION 1907 PAD	<b>North Reference:</b>	True
<b>Well:</b>	ONION 1907-06H	<b>Survey Calculation Method:</b>	Minimum Curvature
<b>Wellbore:</b>	Plan A		
<b>Design:</b>	Design #1		

Planned Survey									
Measured Depth (usft)	Inclination (°)	Azimuth (°)	Vertical Depth (usft)	+N/-S (usft)	+E/-W (usft)	Vertical Section (usft)	Dogleg Rate (°/100usft)	Build Rate (°/100usft)	Turn Rate (°/100usft)
19,700.00	90.00	0.02	7,250.00	13,010.74	1,333.64	13,011.21	0.00	0.00	0.00
19,800.00	90.00	0.02	7,250.00	13,110.74	1,333.68	13,111.21	0.00	0.00	0.00
19,900.00	90.00	0.02	7,250.00	13,210.74	1,333.72	13,211.21	0.00	0.00	0.00
20,000.00	90.00	0.02	7,250.00	13,310.74	1,333.76	13,311.21	0.00	0.00	0.00
20,066.43	90.00	0.02	7,250.00	13,377.17	1,333.79	13,377.64	0.00	0.00	0.00
<b>BPZ @ 20066.43ft</b>									
20,100.00	90.00	0.02	7,250.00	13,410.74	1,333.80	13,411.21	0.00	0.00	0.00
20,156.40	90.00	0.02	7,250.00	13,467.14	1,333.83	13,467.61	0.00	0.00	0.00
<b>TD Well @ 20156.40ft</b>									

Casing Points				
Measured Depth (usft)	Vertical Depth (usft)	Name	Casing Diameter (")	Hole Diameter (")
2,185.58	2,156.00	9 5/8"	9-5/8	13-1/2

Plan Annotations				
Measured Depth (usft)	Vertical Depth (usft)	Local Coordinates		Comment
		+N/-S (usft)	+E/-W (usft)	
501.00	501.00	0.00	0.00	Begin Nudge @ 501.00ft
1,120.00	1,115.19	22.71	62.62	Hold Tangent @ 1120.00ft
6,809.22	6,672.12	438.48	1,209.31	KOP @ 6809.22ft :: DLS = 9°/100'
7,762.60	7,250.00	1,073.35	1,328.80	End Build/TPZ @ 7762.60ft
20,066.43	7,250.00	13,377.17	1,333.79	BPZ @ 20066.43ft
20,156.40	7,250.00	13,467.14	1,333.83	TD Well @ 20156.40ft