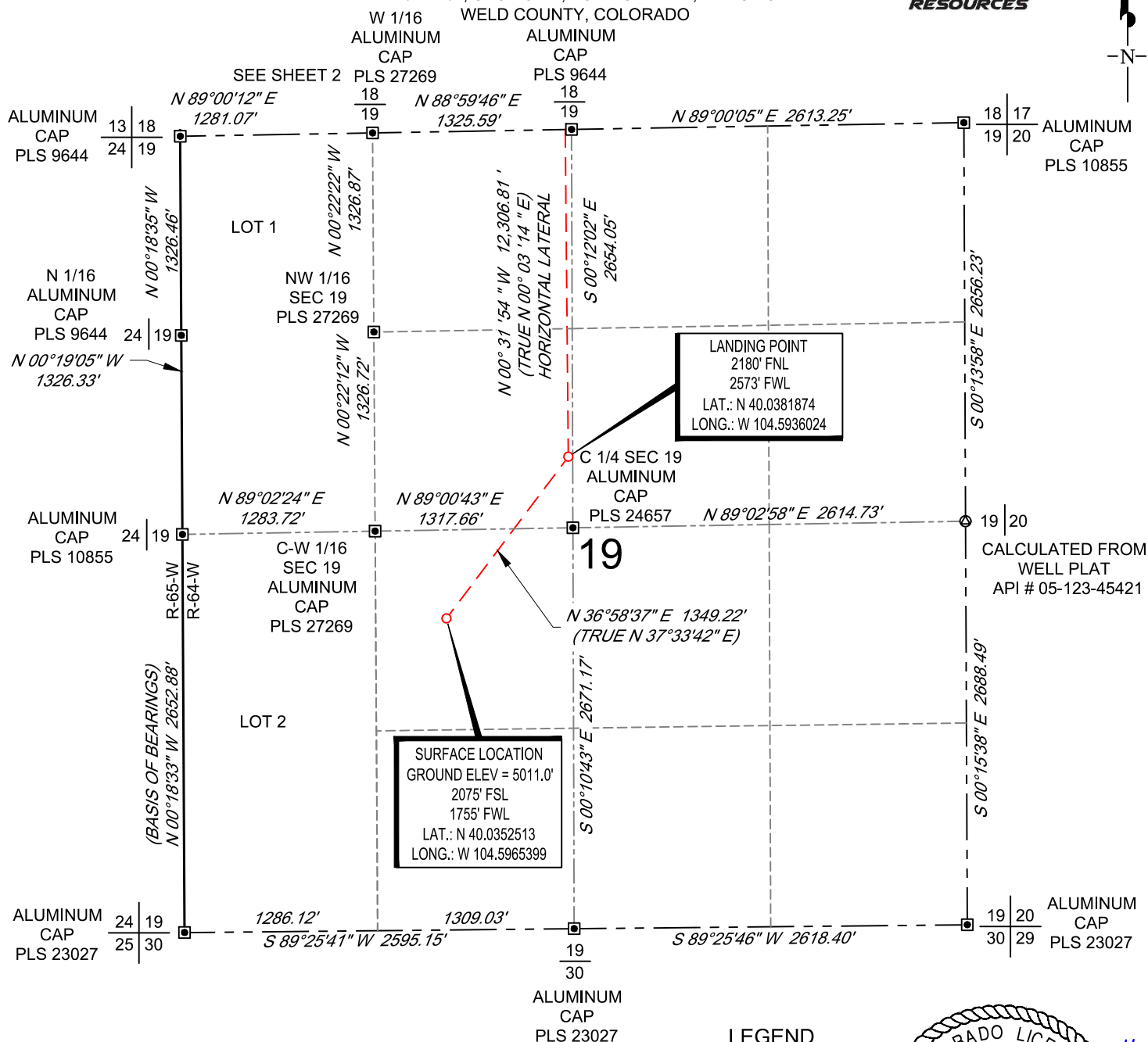


SCALE: 1" = 1000'

0' 500' 1000'

WELL LOCATION MAP

SHL NE/4 SW/4, SECTION 19, TOWNSHIP 1-N, RANGE 64-W
 LPL SE/4 NW/4, SECTION 19, TOWNSHIP 1-N, RANGE 64-W
 BPZ NW/4 NE/4, SECTION 7, TOWNSHIP 1-N, RANGE 64-W
 BHL NW/4 NE/4, SECTION 7, TOWNSHIP 1-N, RANGE 64-W



NOTES

1. Horizontal (NAD 83) and vertical (NAVD 88) datum is based on the Trimble VRS Network or OPUS Solution.
2. All directions, distances, and dimensions shown hereon are based on coordinates from the "Colorado coordinate system of 1983 north zone" (article 52 of title 38, C.R.S.).
3. All section line dimensions shown hereon are based on field measurements of existing monuments and/or physical evidence found in the field unless otherwise indicated.
4. See Form 2A, if applicable for visible improvements within 500' of wellhead.
5. Distances to nearest section lines are measured perpendicularly.
6. This is not a land survey nor land survey plat.

PDOP Reading: 2.0 Instrument Operator: Ross Carter
 Date Surveyed: 04/04/2019

LEGEND

- ⊙ Calculated Corner
- Found Survey Monument



SURVEYOR'S STATEMENT

The undersigned hereby states that the well location shown hereon was staked on the ground based on existing monumentation and/or physical evidence found in the field and is correct to the best of my knowledge, information and belief.



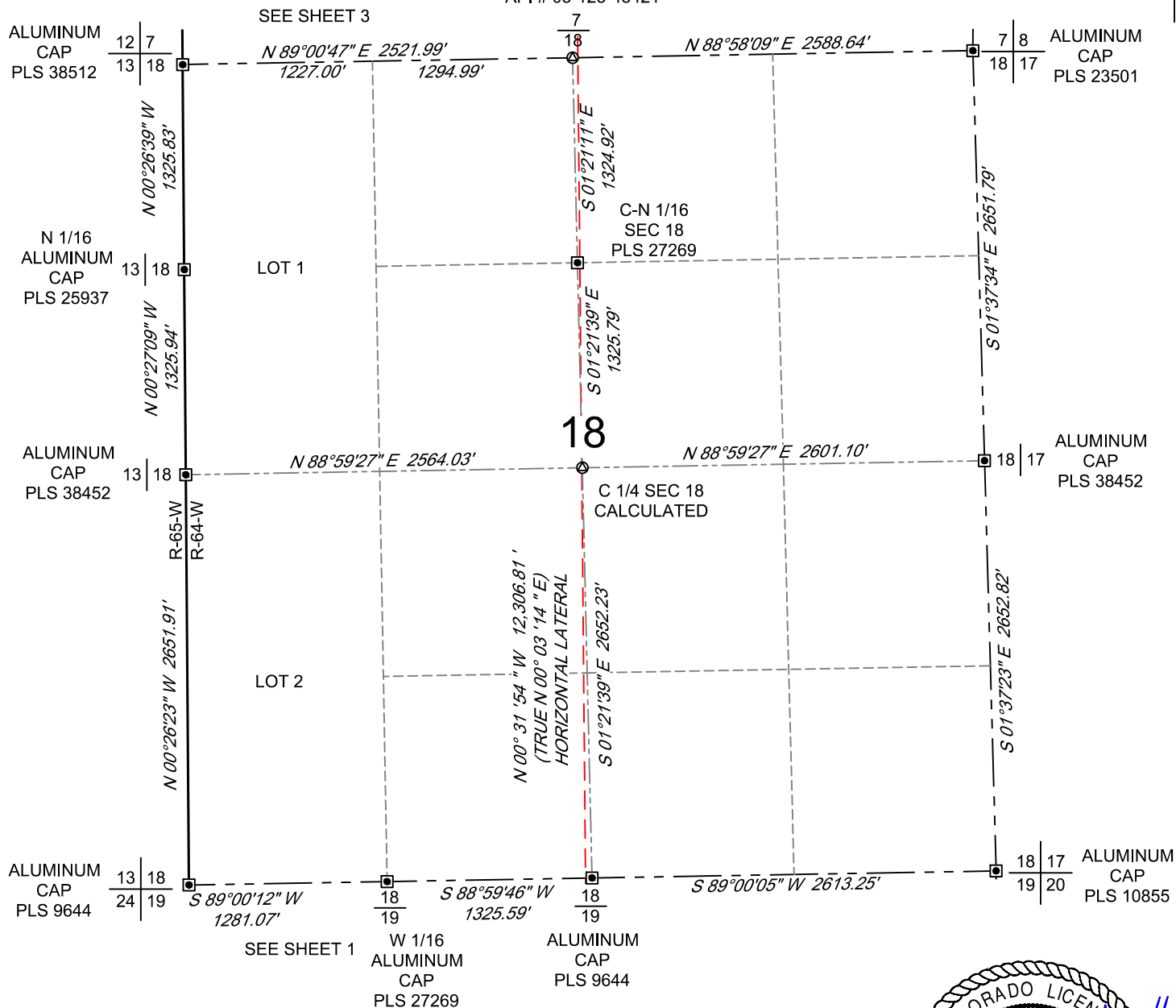
VERDAD RESOURCES
 ONION 1907-05H
 JOB NO. 125258

JLS	05/16/2019	REVISION:	
SHEET :	1 OF 3	SW	02/28/2022
FILE:LO_ONION_1907_5H_REV4		SW	03/07/2022

SCALE: 1" = 1000'
0' 500' 1000'

WELL LOCATION MAP

SHL NE/4 SW/4, SECTION 19, TOWNSHIP 1-N, RANGE 64-W
LPL SE/4 NW/4, SECTION 19, TOWNSHIP 1-N, RANGE 64-W
BPZ NW/4 NE/4, SECTION 7, TOWNSHIP 1-N, RANGE 64-W
BHL NW/4 NE/4, SECTION 7, TOWNSHIP 1-N, RANGE 64-W
WELD COUNTY, COLORADO
CALCULATED
FROM WELL PLAT
API # 05-123-45421



LEGEND

- ⊙ Calculated Corner
- ⊠ Found Survey Monument



SURVEYOR'S STATEMENT

The undersigned hereby states that the well location shown hereon was staked on the ground based on existing monumentation and/or physical evidence found in the field and is correct to the best of my knowledge, information and belief.



VERDAD RESOURCES
ONION 1907-05H
JOB NO. 125258

JLS	05/16/2019	REVISION:	
SHEET :	2 OF 3	SW	02/28/2022
FILE:LO_ONION_1907_5H_REV4		SW	03/07/2022

