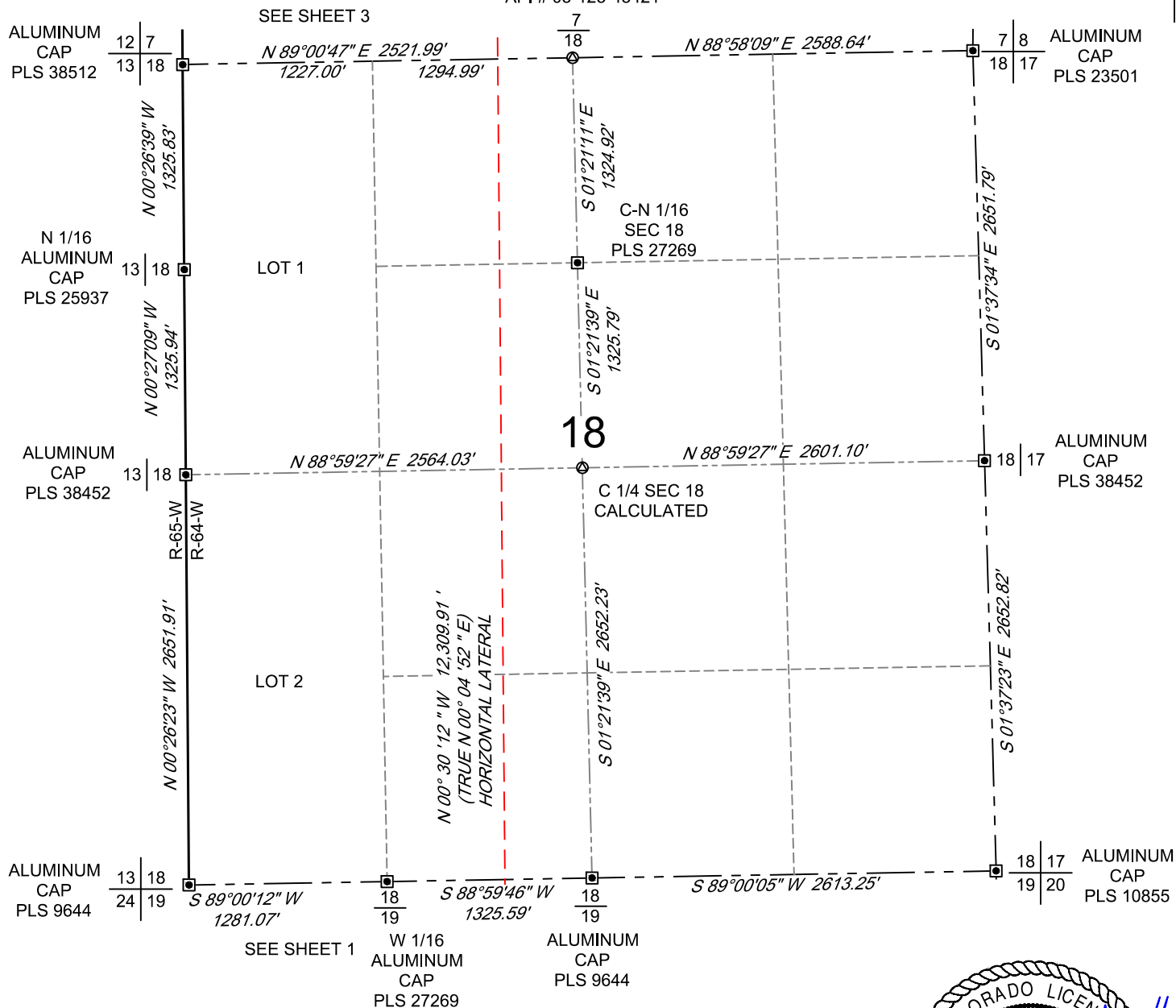


SCALE: 1" = 1000'
0' 500' 1000'

WELL LOCATION MAP

SHL NE/4 SW/4, SECTION 19, TOWNSHIP 1-N, RANGE 64-W
LPL SE/4 NW/4, SECTION 19, TOWNSHIP 1-N, RANGE 64-W
BPZ NE/4 NW/4, SECTION 7, TOWNSHIP 1-N, RANGE 64-W
BHL NE/4 NW/4, SECTION 7, TOWNSHIP 1-N, RANGE 64-W
WELD COUNTY, COLORADO
CALCULATED
FROM WELL PLAT
API # 05-123-45421



LEGEND

- ⊙ Calculated Corner
- ⊠ Found Survey Monument



SURVEYOR'S STATEMENT

The undersigned hereby states that the well location shown hereon was staked on the ground based on existing monumentation and/or physical evidence found in the field and is correct to the best of my knowledge, information and belief.



VERDAD RESOURCES
ONION 1907-04H
JOB NO. 125258

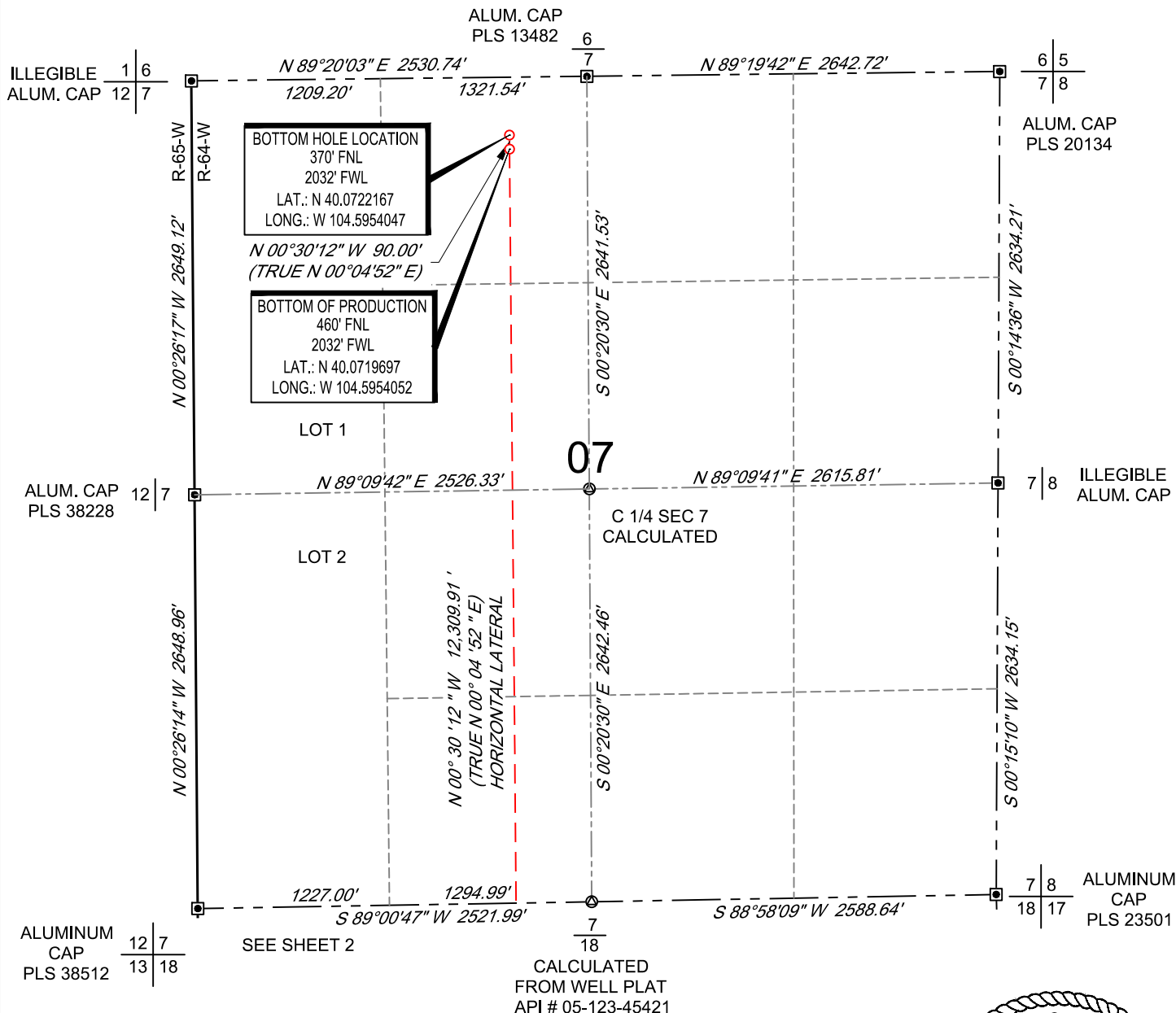
JLS	05/16/2019	REVISION:	
SHEET :	2 OF 3	SW	02/28/2022
FILE:LO_ONION_1907_4H_REV4		SW	03/07/2022

SCALE: 1" = 1000'

0' 500' 1000'

WELL LOCATION MAP

SHL NE/4 SW/4, SECTION 19, TOWNSHIP 1-N, RANGE 64-W
 LPL SE/4 NW/4, SECTION 19, TOWNSHIP 1-N, RANGE 64-W
 BPZ NE/4 NW/4, SECTION 7, TOWNSHIP 1-N, RANGE 64-W
 BHL NE/4 NW/4, SECTION 7, TOWNSHIP 1-N, RANGE 64-W
 WELD COUNTY, COLORADO



LEGEND

- ⊙ Calculated Corner
- ⊠ Found Survey Monument



SURVEYOR'S STATEMENT

The undersigned hereby states that the well location shown hereon was staked on the ground based on existing monumentation and/or physical evidence found in the field and is correct to the best of my knowledge, information and belief.



VERDAD RESOURCES
 ONION 1907-04H
 JOB NO. 125258

JLS	05/16/2019	REVISION:	
SHEET :	3 OF 3	SW	02/28/2022
FILE:LO_ONION_1907_4H_REV4		SW	03/07/2022