



CEMENT BOND LOG W/  
VARIABLE DENSITY  
GAMMA RAY, CCL, TEMP

Doc# 1585435

Company GMT EXPLORATION CO.  
Well REDSTONE 6-65 24-36 1HN  
Field WILDCAT  
County ELBERT  
State COLORADO

Company GMT EXPLORATION CO.  
Well REDSTONE 6-65 24-36 1HN  
Field WILDCAT  
County ELBERT State COLORADO

Location: API # : 05-039-06703-00  
39.510619 / -104.617930  
SEC 24 TWP 6S RGE 65W  
Permanent Datum GL Elevation 6276'  
Log Measured From KB 23'  
Drilling Measured From KB  
Other Services  
Elevation  
K.B. 6299'  
D.F.  
G.L. 6276'

Date	MAY-3-2022									
Run Number	ONE									
Depth Driller	2727'									
Depth Logger	2700'									
Bottom Logged Interval	2700'									
Top Log Interval	SURFACE									
Open Hole Size	-									
Type Fluid	MUD									
Density / Viscosity	9.50 PPG									
Max. Recorded Temp.	138									
Estimated Cement Top	-									
Time Well Ready	1730									
Time Logger on Bottom	1800									
Equipment Number	66									
Location	PLATTEVILLE									
Recorded By	K. GIRDLER									
Witnessed By	K. MOSELEY									
Borehole Record					Tubing Record					
Run Number	Bit	From	To	Size	Weight	From	To			
Casing Record	Size			Wgt/Ft		Top	Bottom			
Surface String	9-5/8"			36#		SURFACE	2727'			
Prot. String										
Production String										
Liner										

<<< Fold Here >>>

All interpretations are opinions based on inferences from electrical or other measurements and we cannot and do not guarantee the accuracy or correctness of any interpretation, and we shall not, except in the case of gross or willful negligence on our part, be liable or responsible for any loss, costs, damages, or expenses incurred or sustained by anyone resulting from any interpretation made by any of our officers, agents or employees. These interpretations are also subject to our general terms and conditions set out in our current Price Schedule.

Comments

LOG RAN OFF OF 23' K.B.

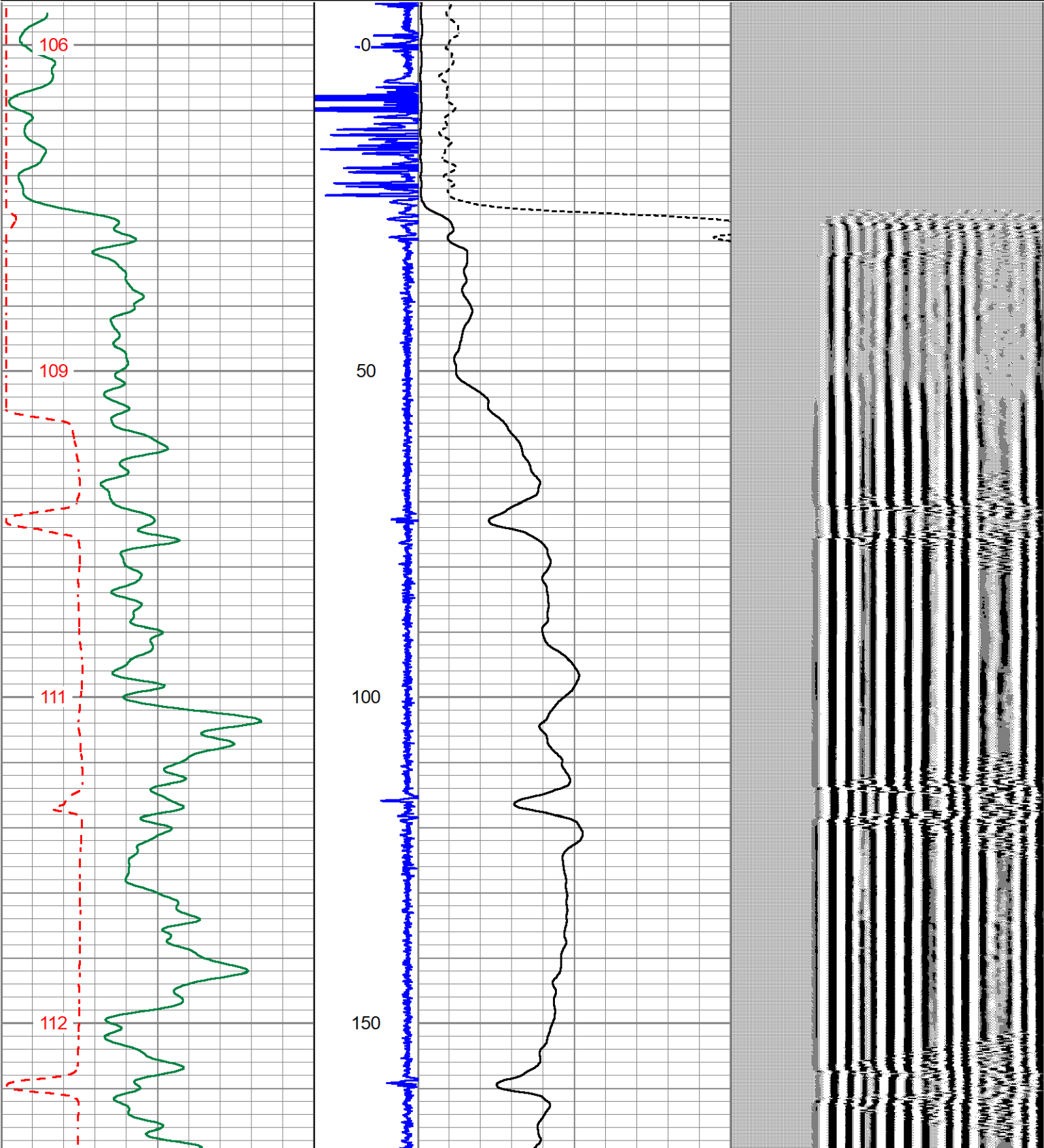
THANK YOU FOR CHOOSING KLX ENERGY SERVICES

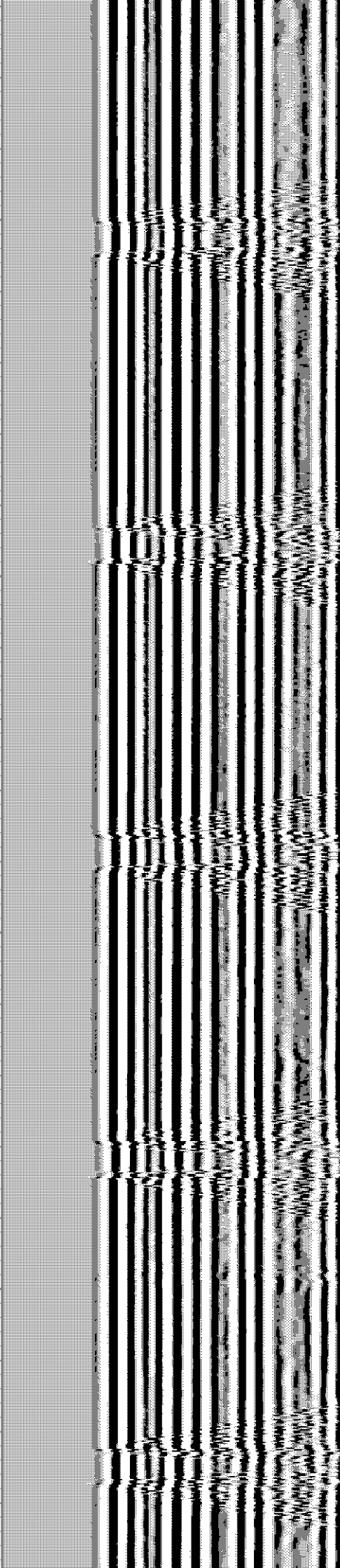
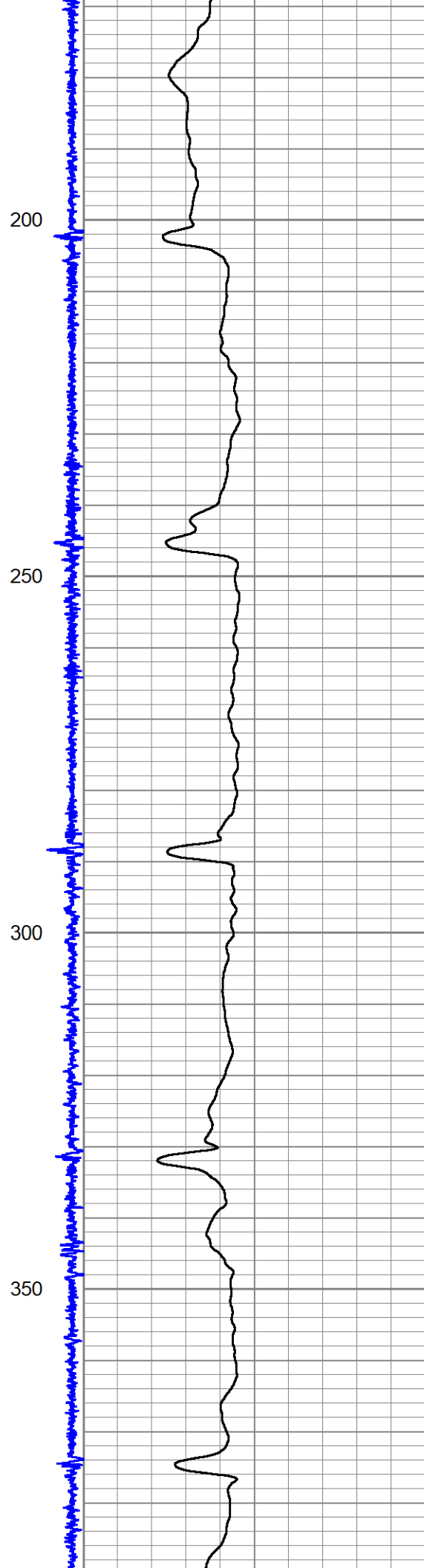
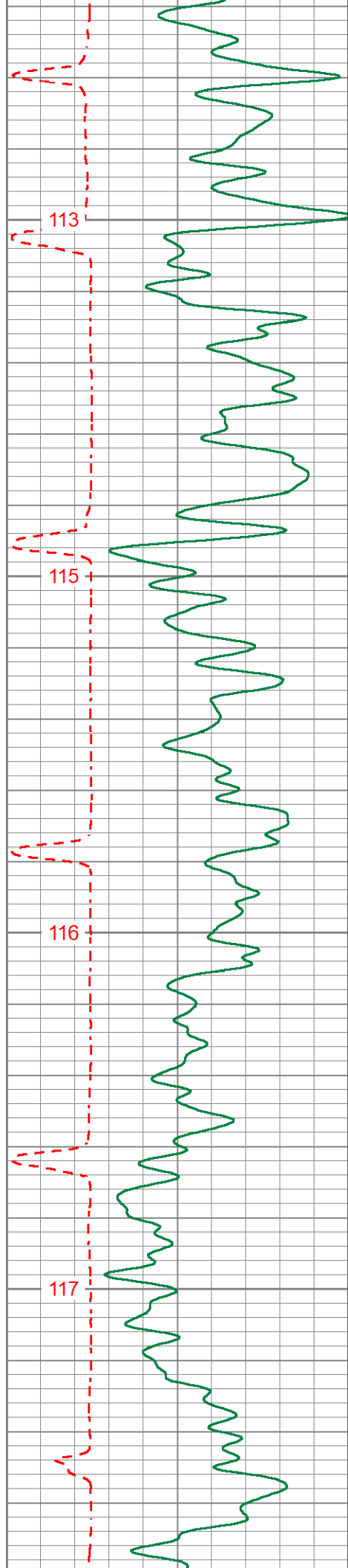


MAIN PASS

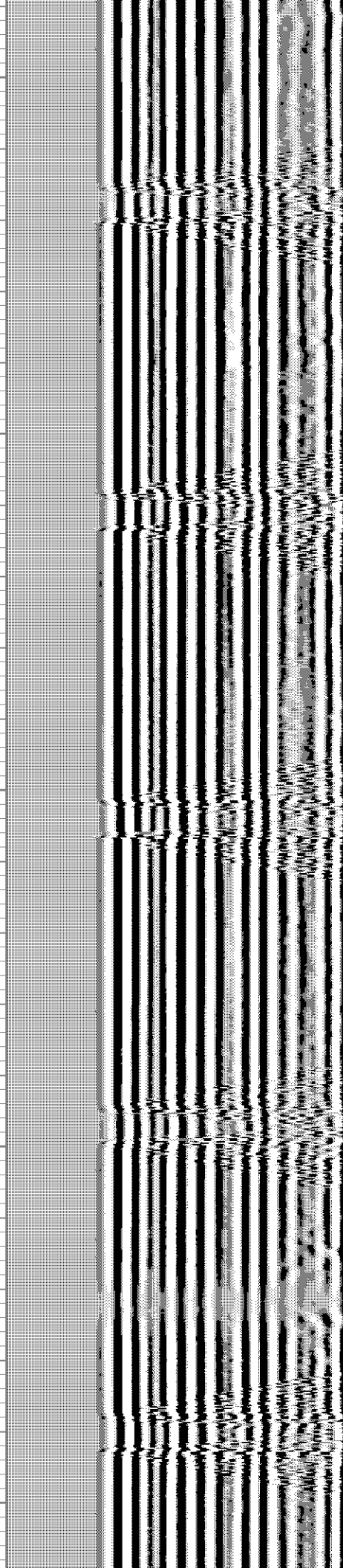
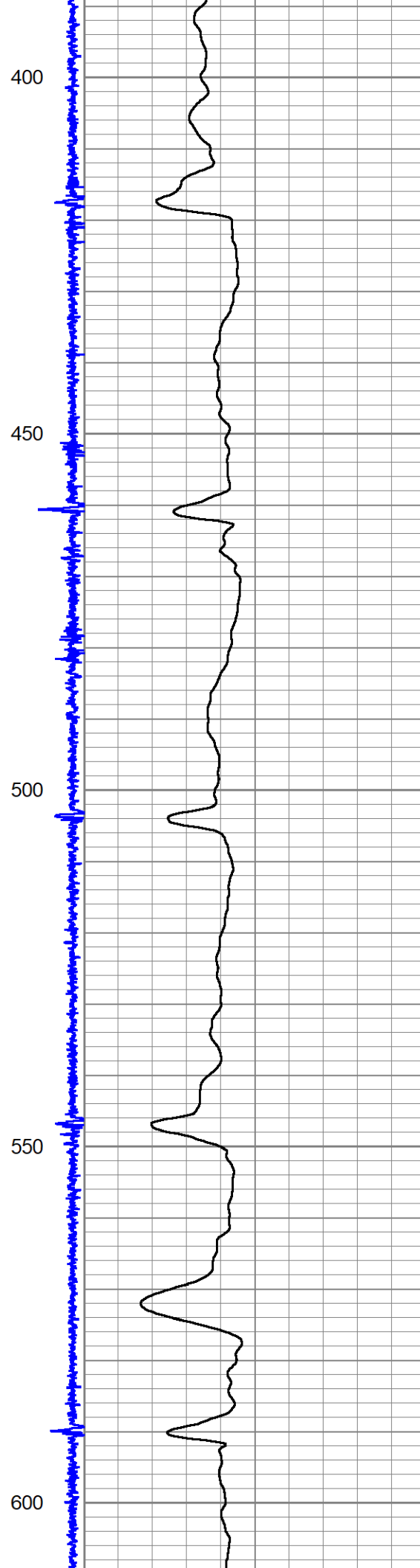
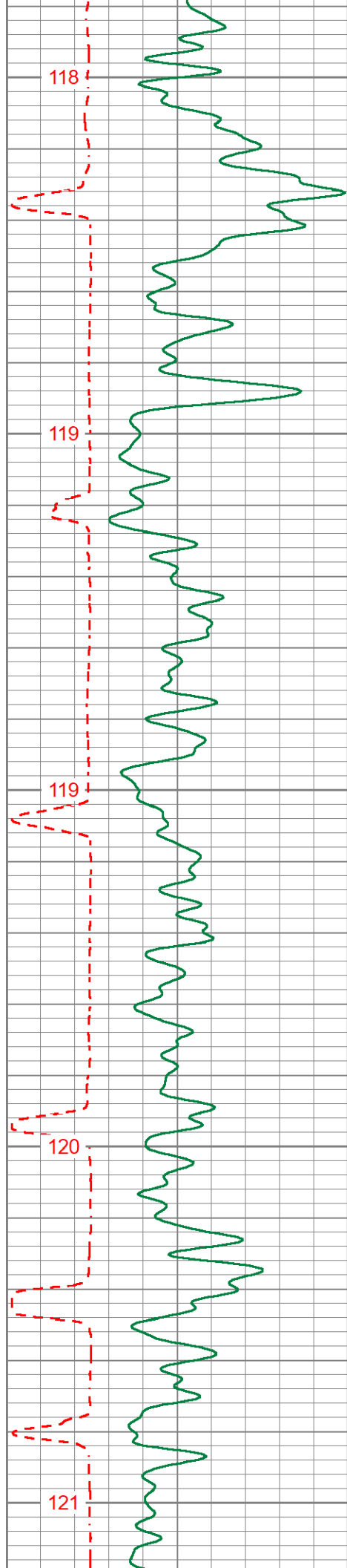
Database File	gmt_redstone_6-65_24-36_1hn_cbl.db
Dataset Pathname	cbl2
Presentation Format	cbl_kg
Dataset Creation	Tue May 03 18:41:33 2022
Charted by	Depth in Feet scaled 1:240

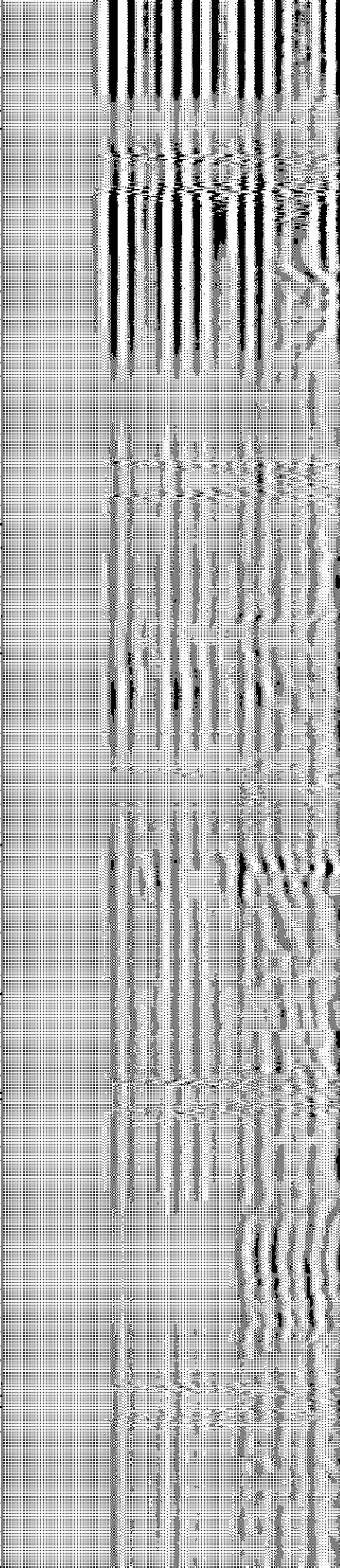
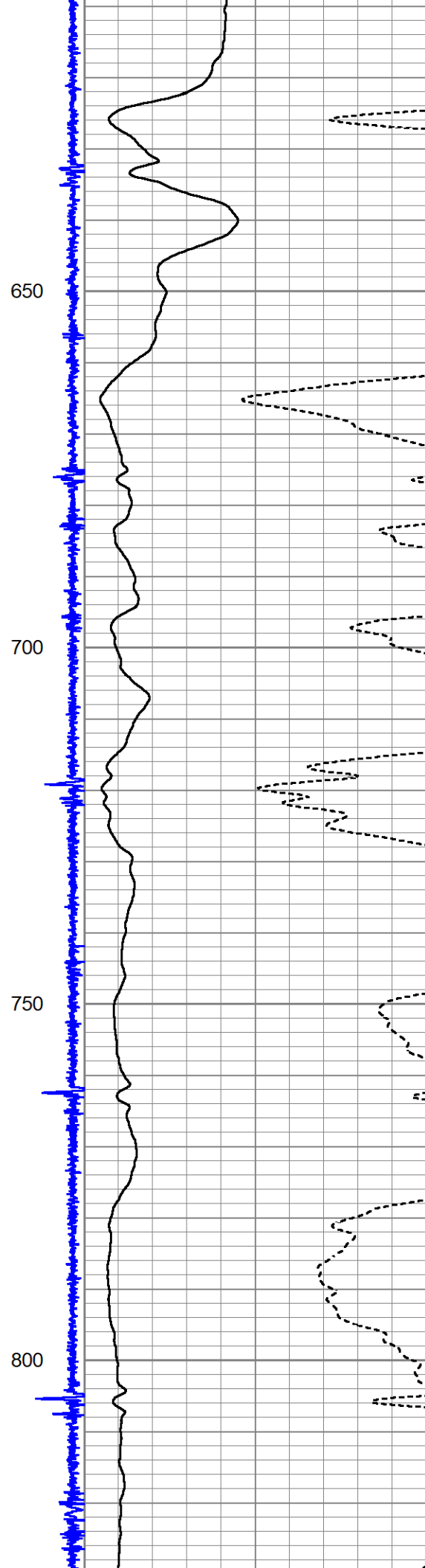
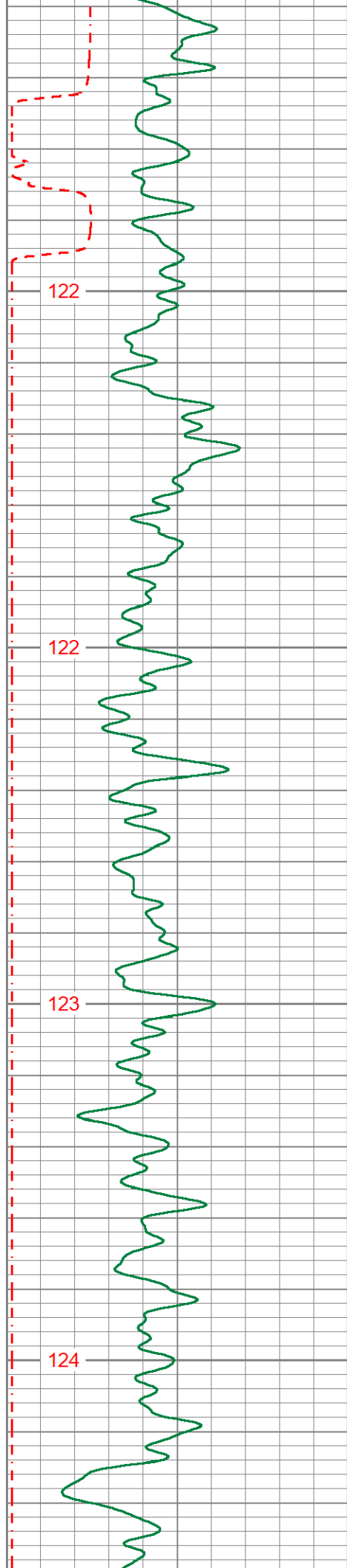
400	TRAVEL TIME (usec)	200	Collar Location	0	AMP AMPLITUDE (mV)	10	200	VDL (usec)	1200
0	Gamma Ray (GAPI)	150	9	-1	0	AMPLITUDE (mV)	100		
0	Line Speed (ft/min)	100							
TEMP									
(degF)									

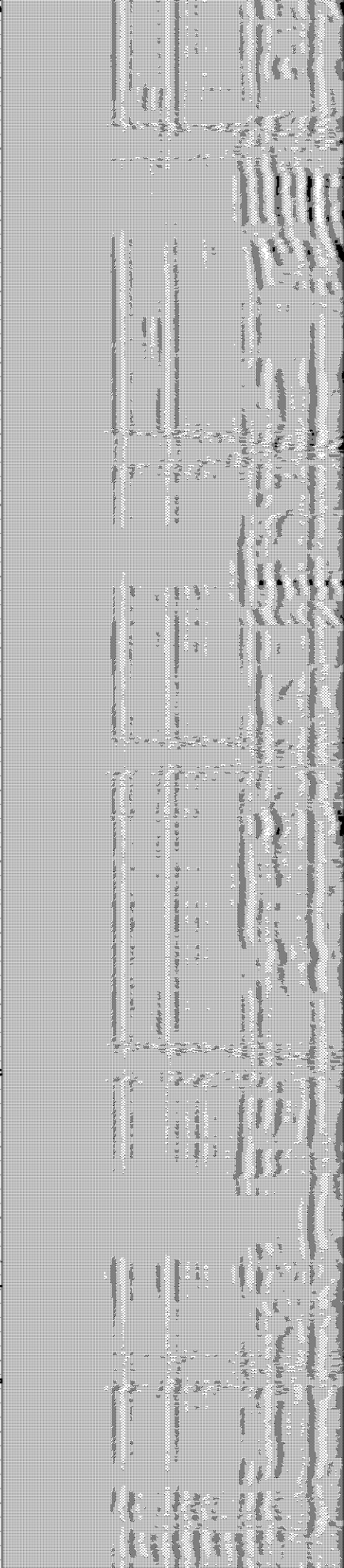
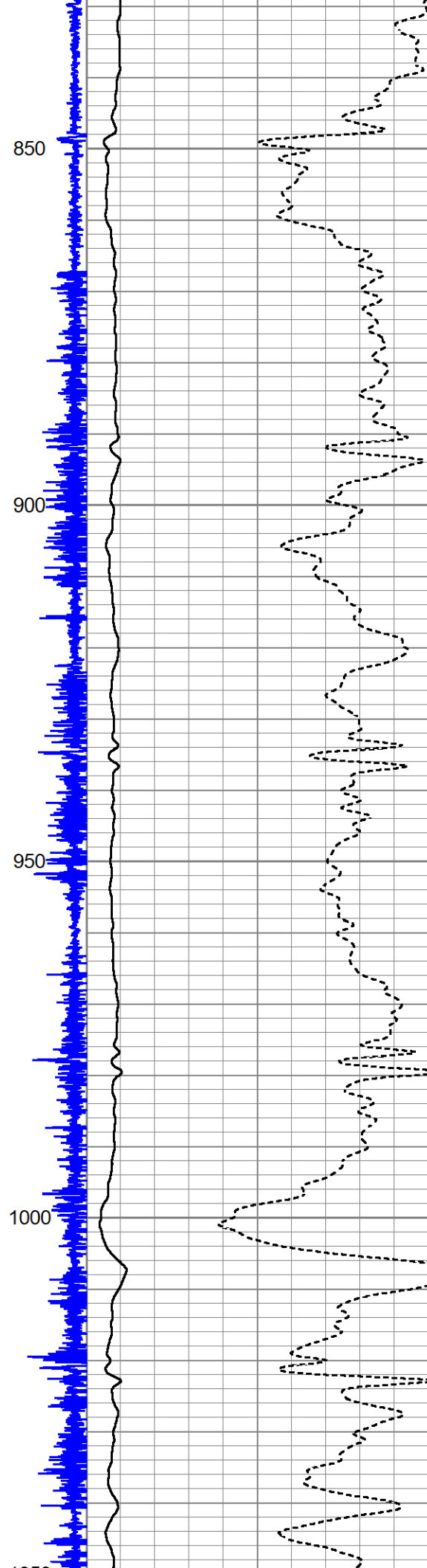
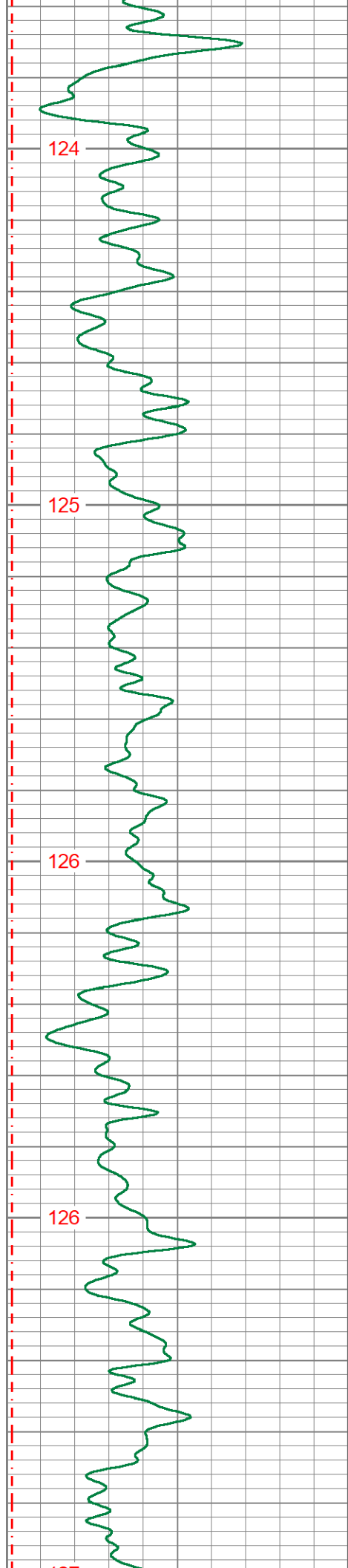




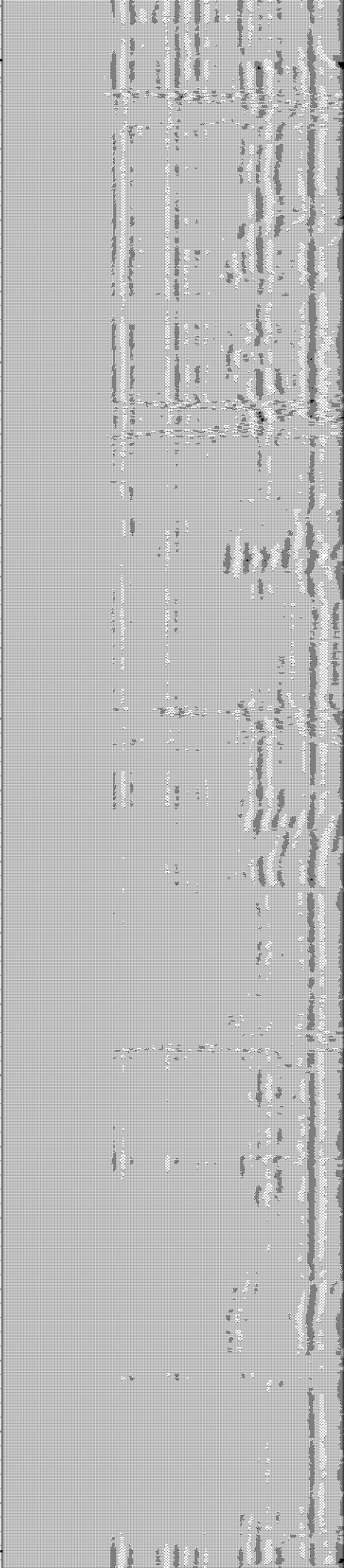
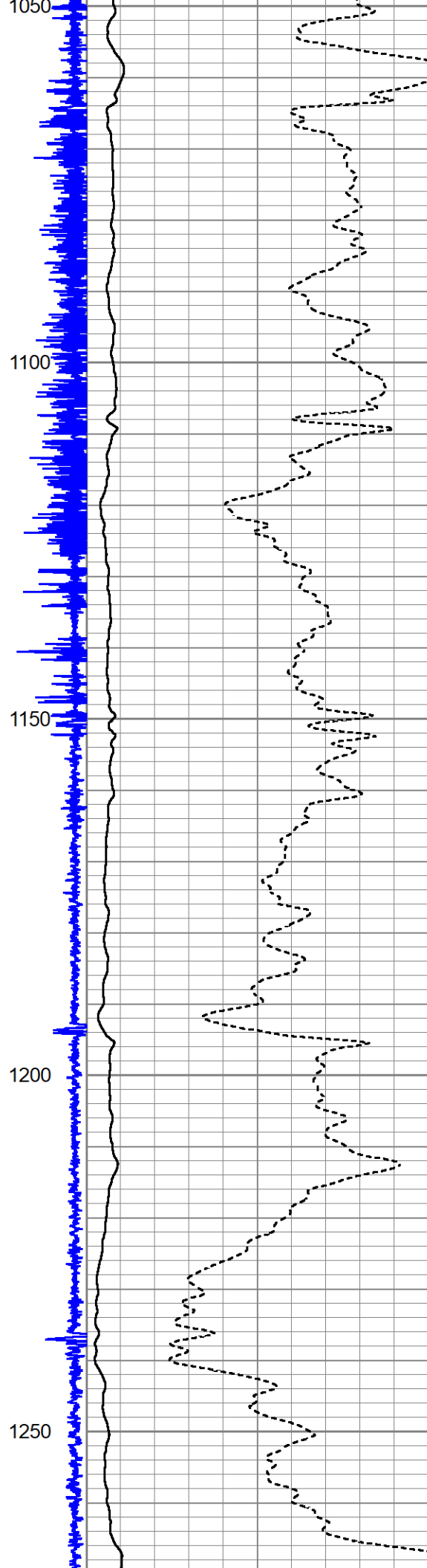
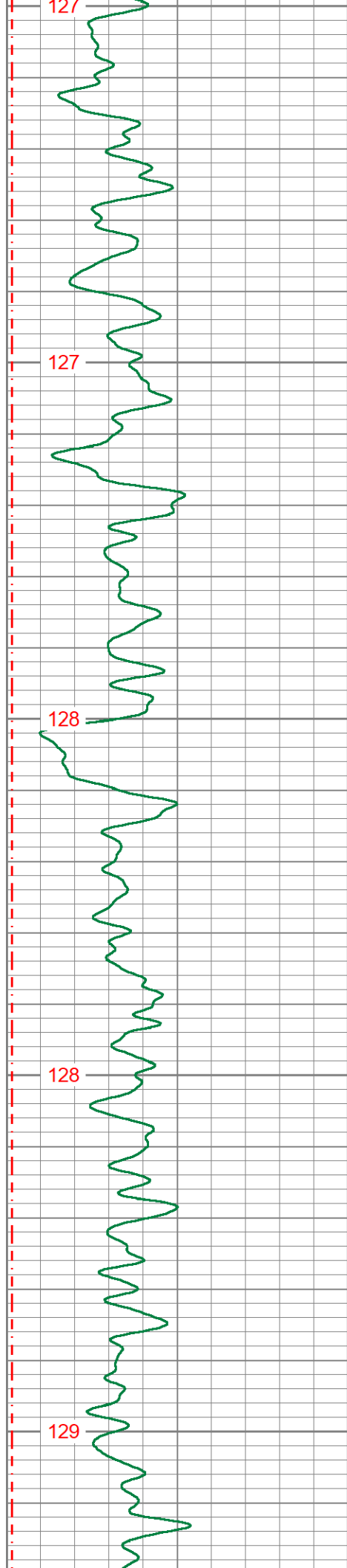


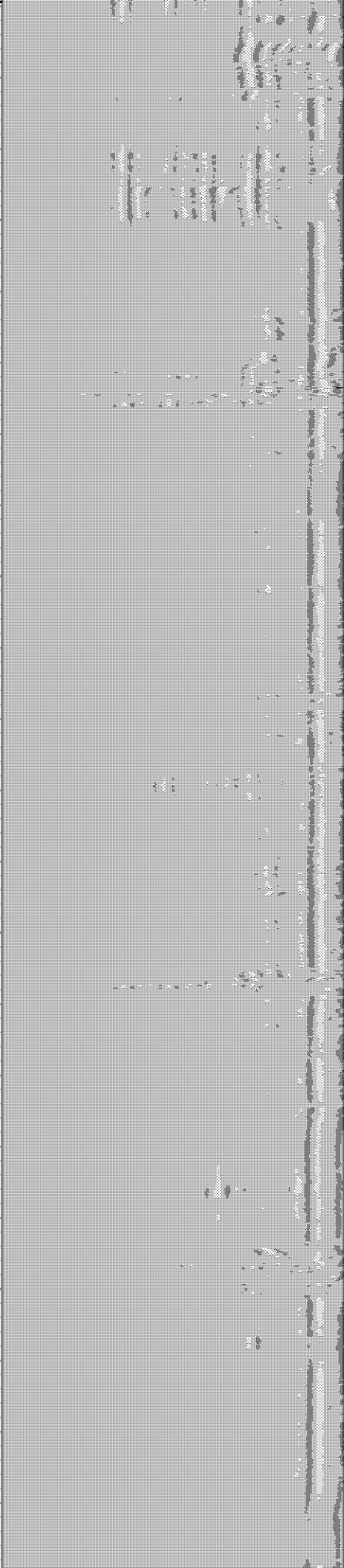
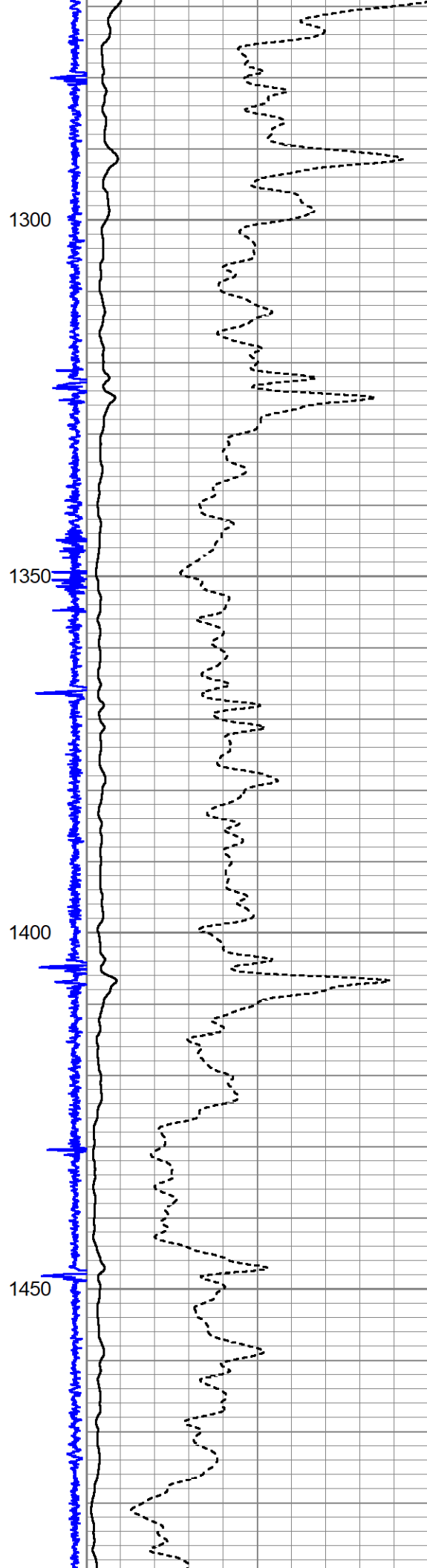
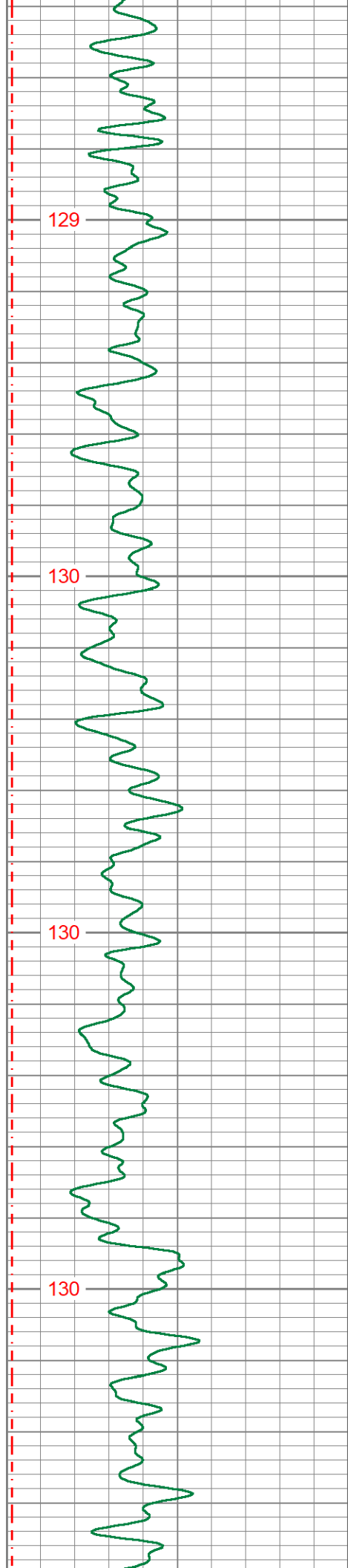




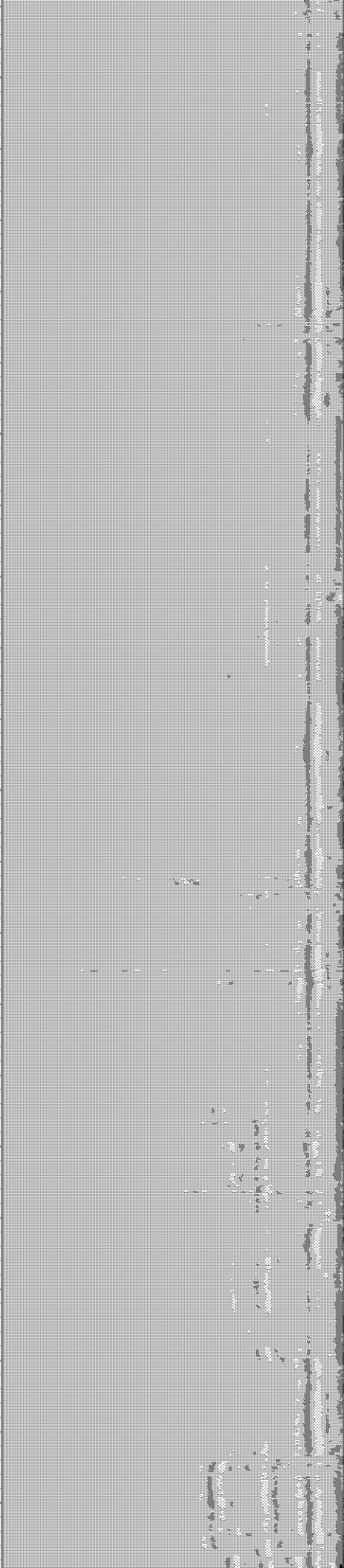
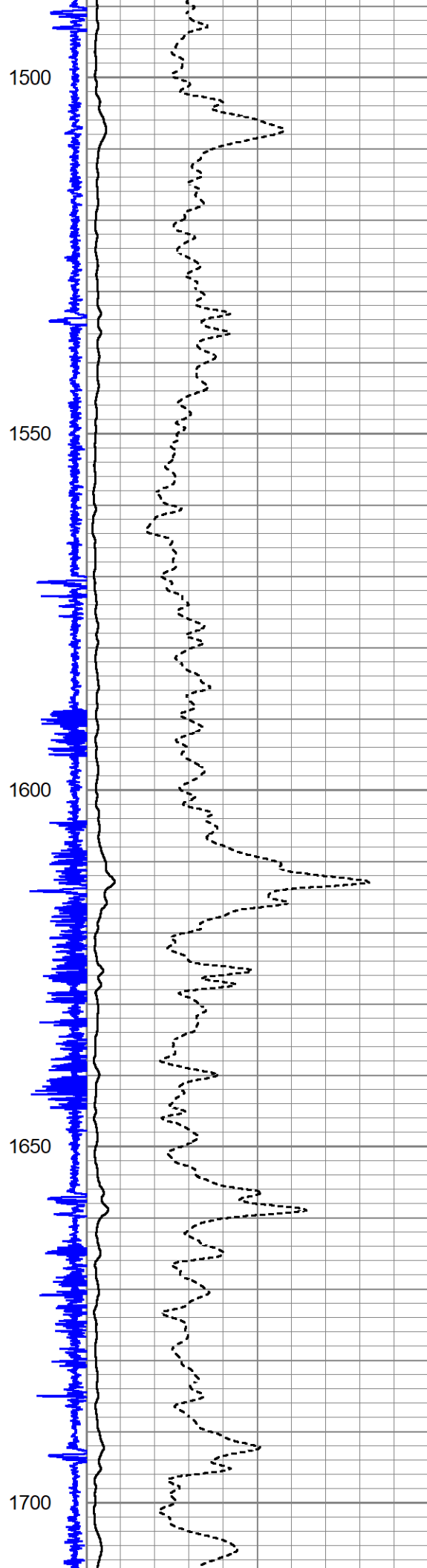
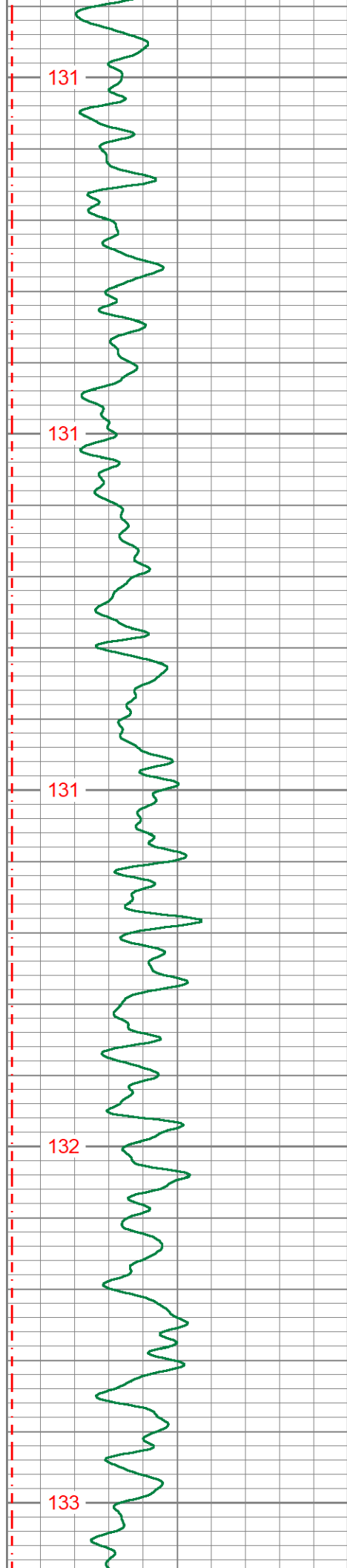


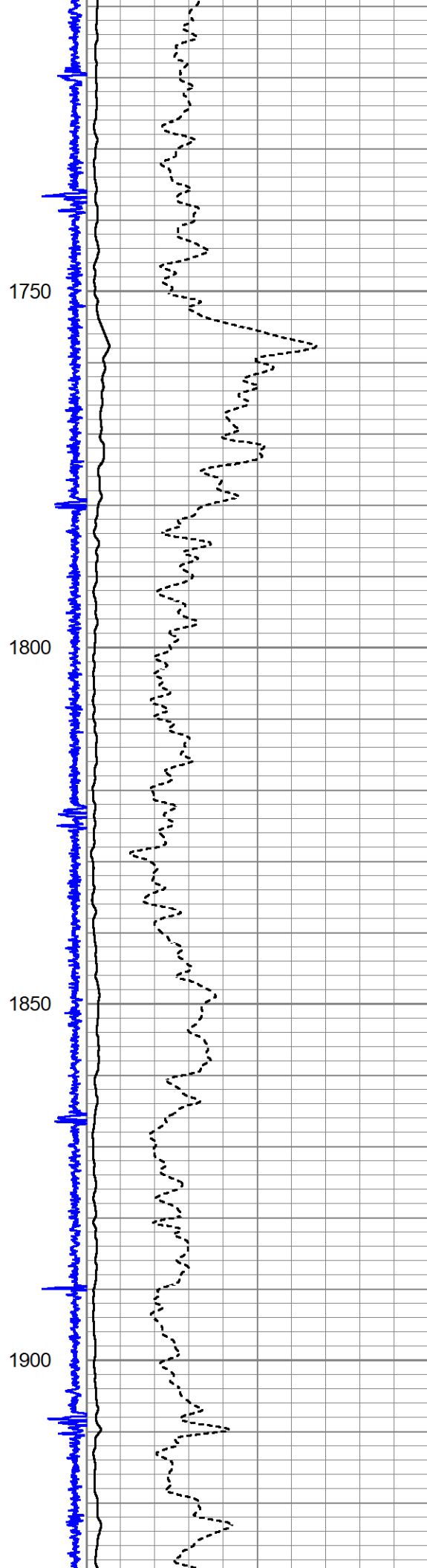
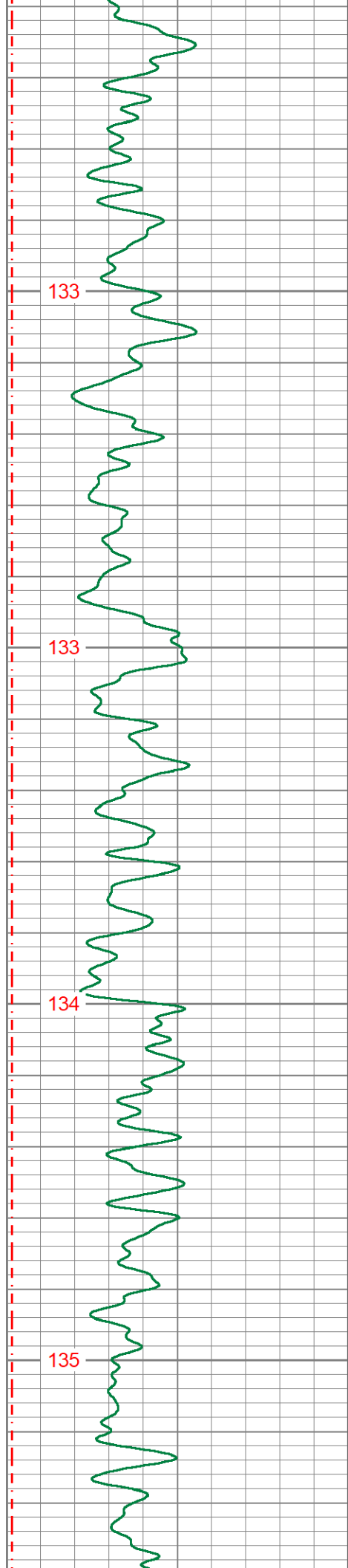


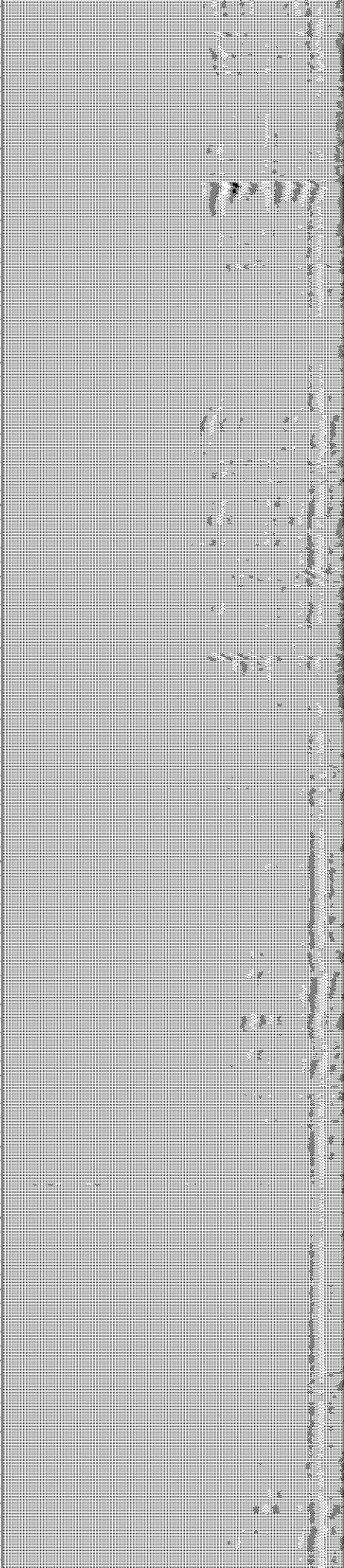
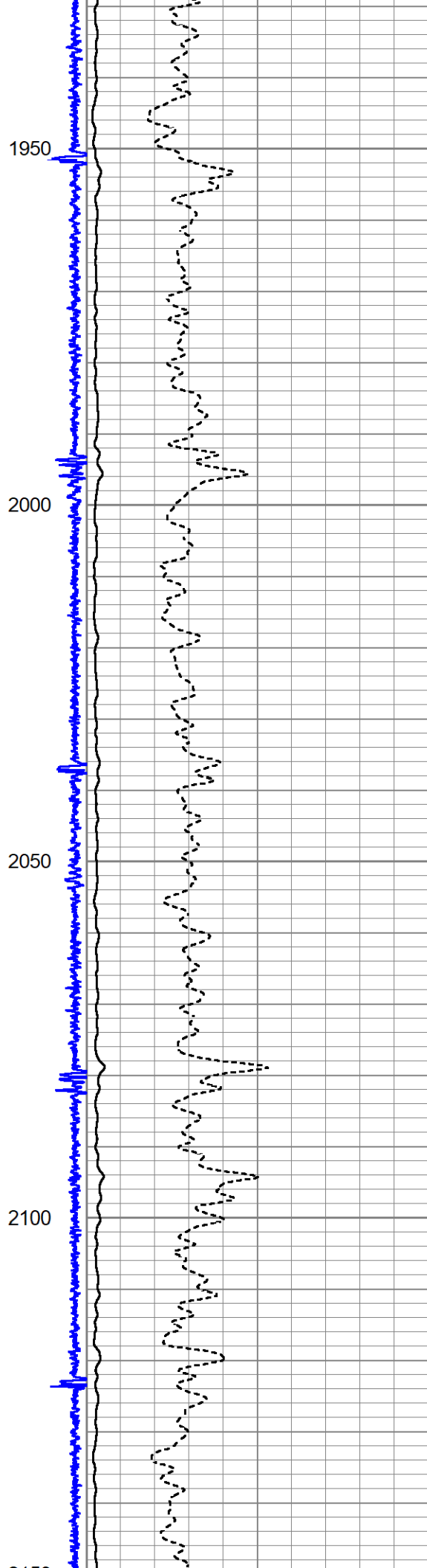
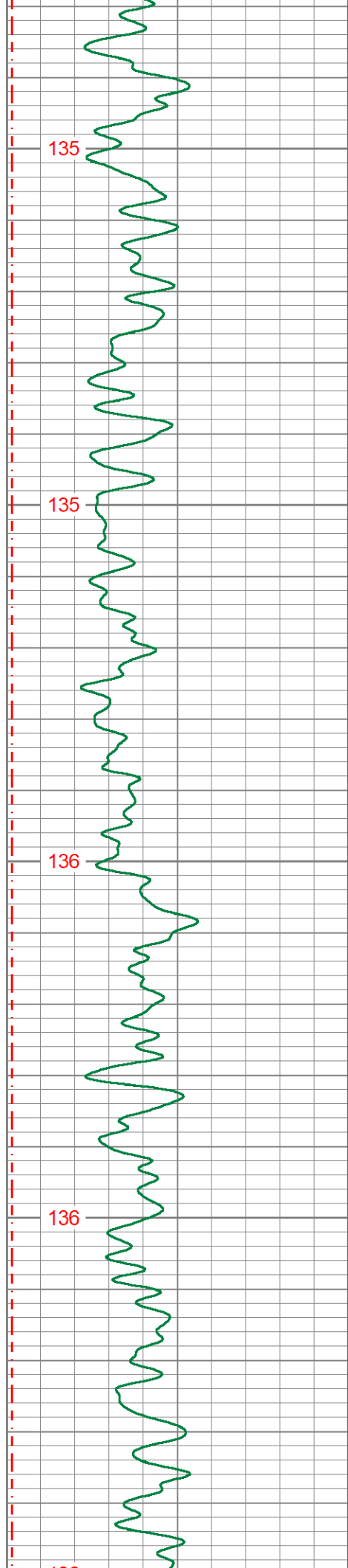




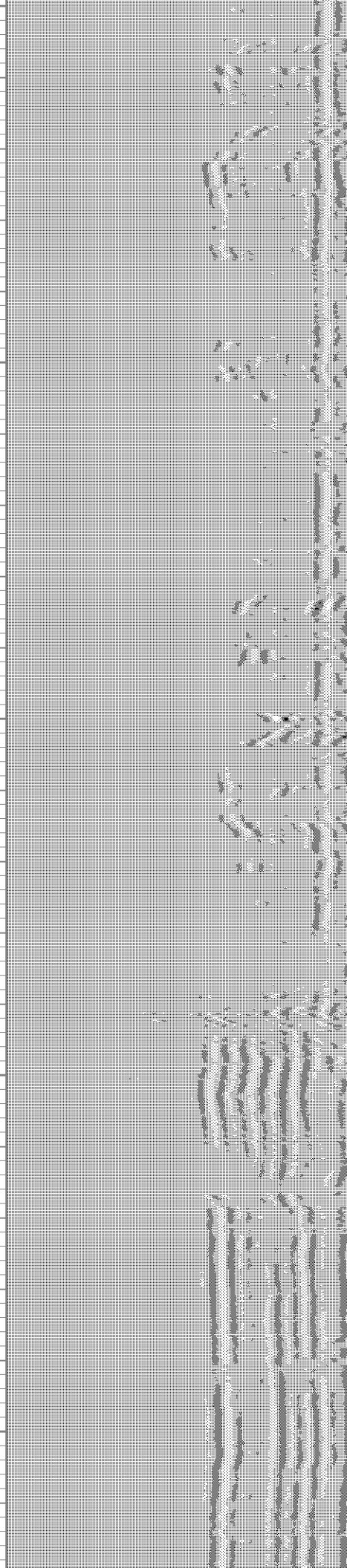
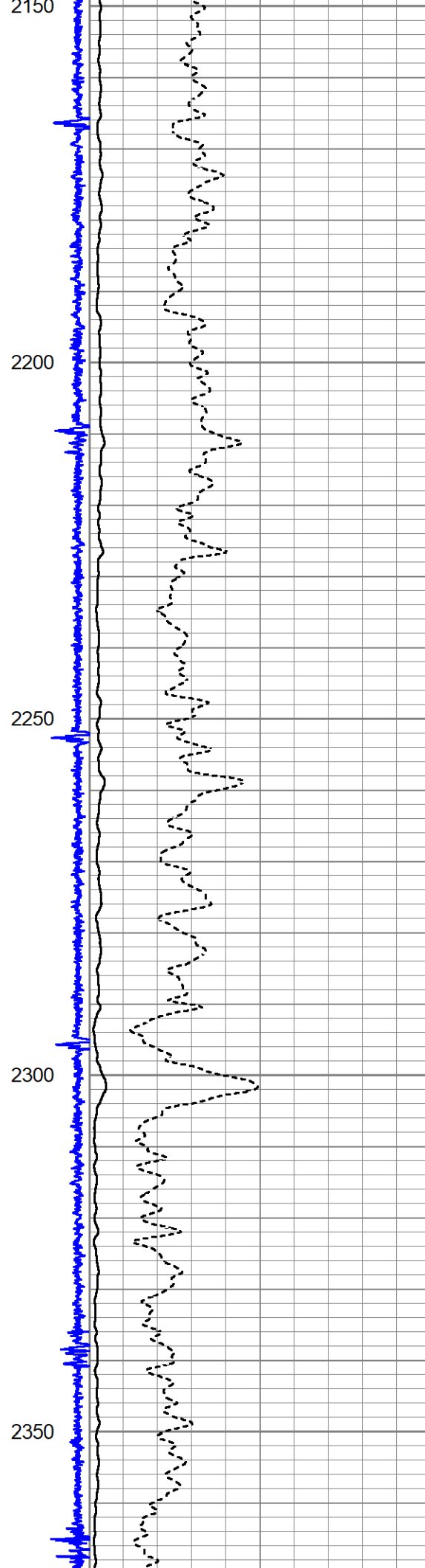
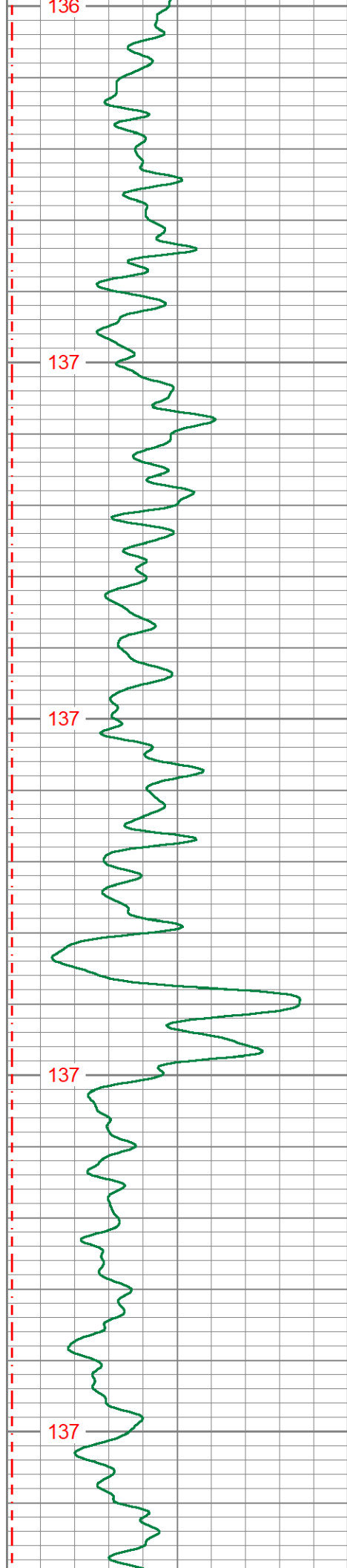


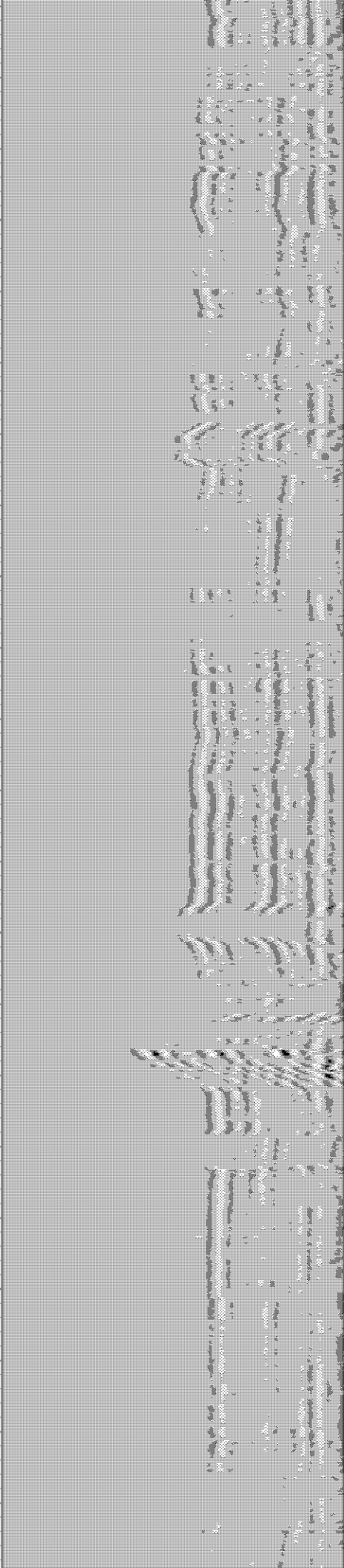
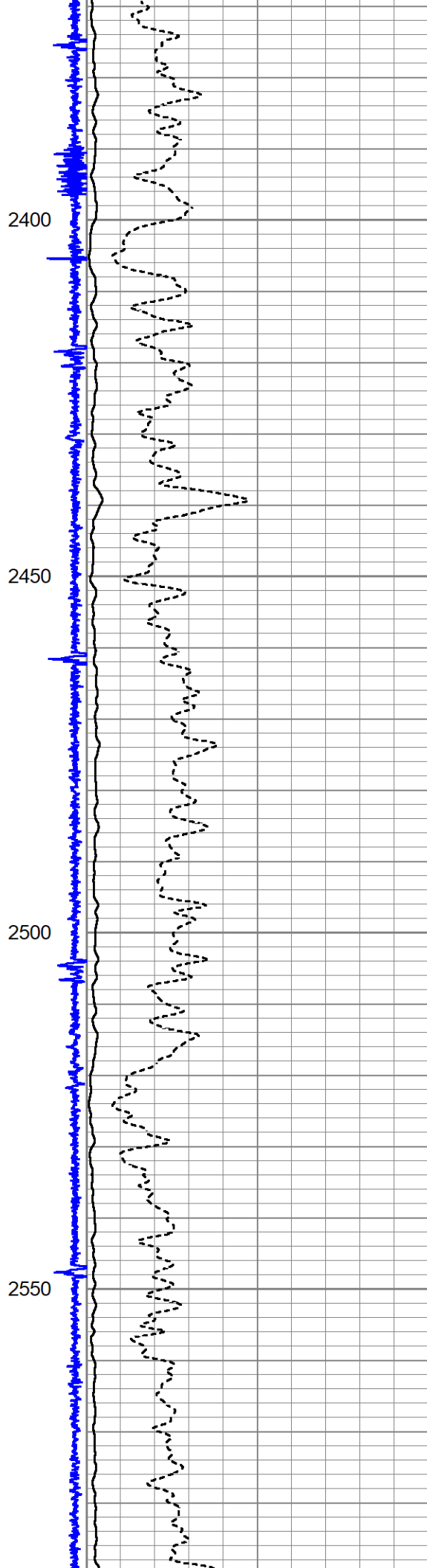
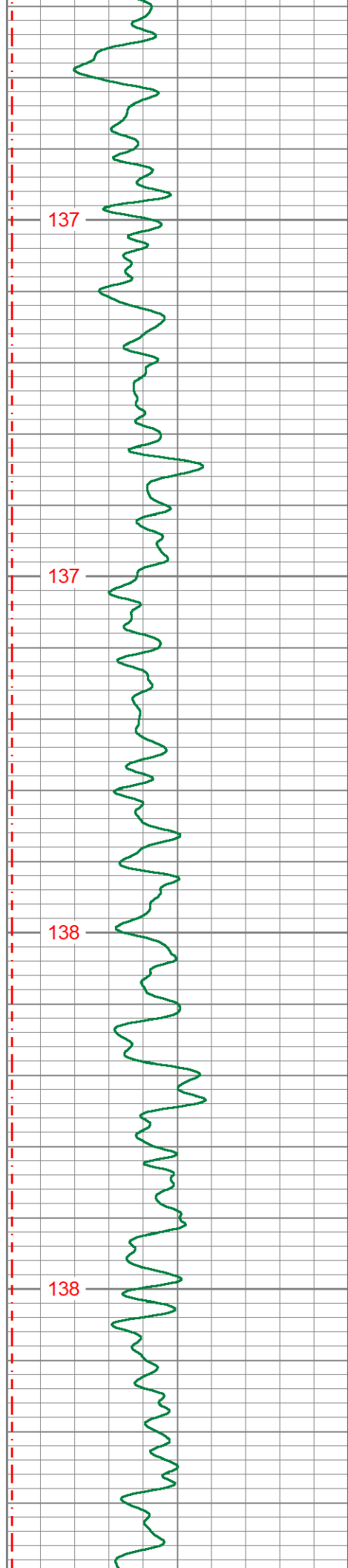


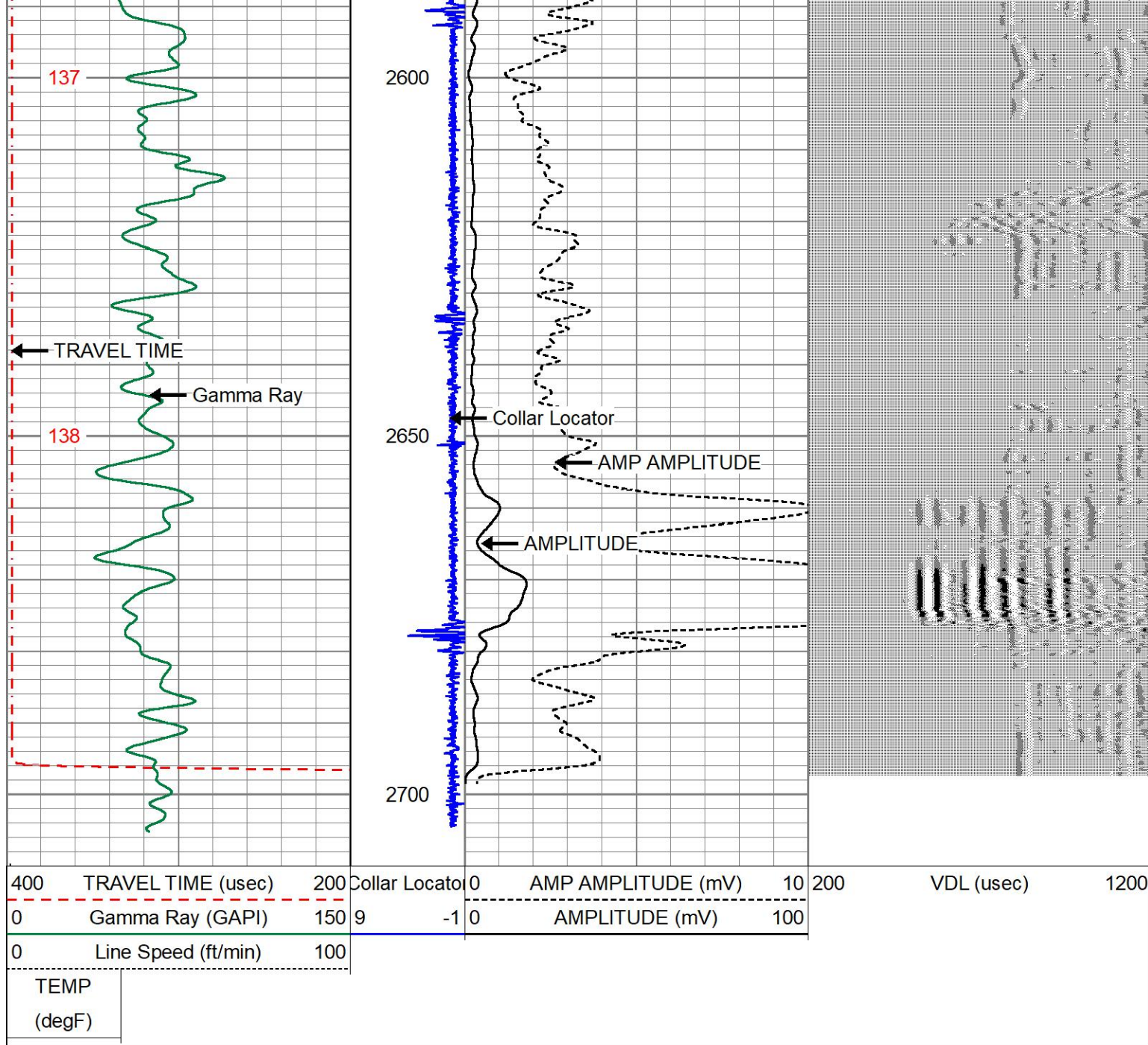






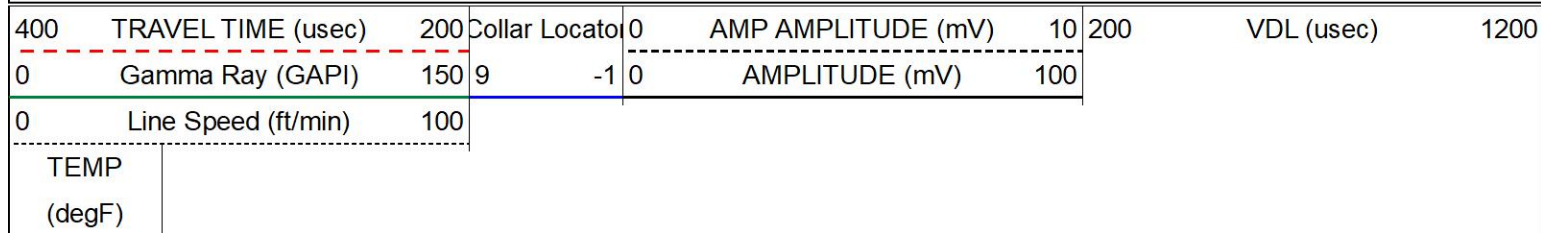




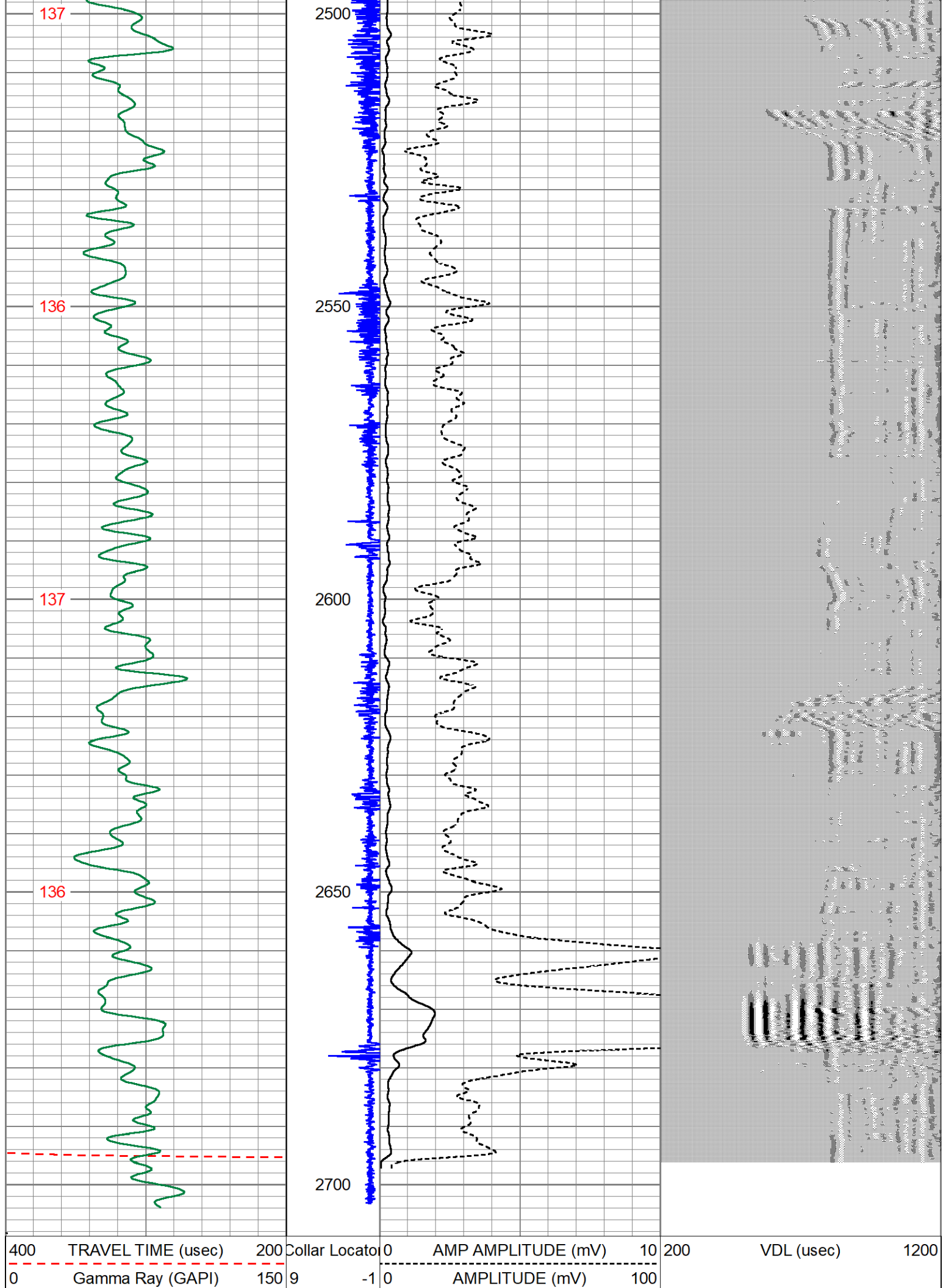


## REPEAT PASS

Database File gmt\_redstone\_6-65\_24-36\_1hn\_cbl.db  
 Dataset Pathname pass8  
 Presentation Format cbl\_kg  
 Dataset Creation Tue May 03 18:01:59 2022  
 Charted by Depth in Feet scaled 1:240





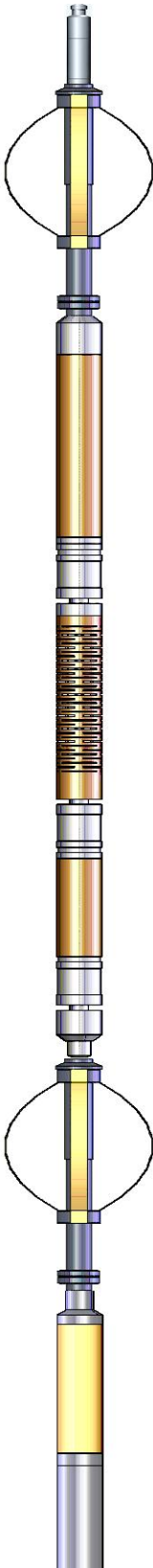
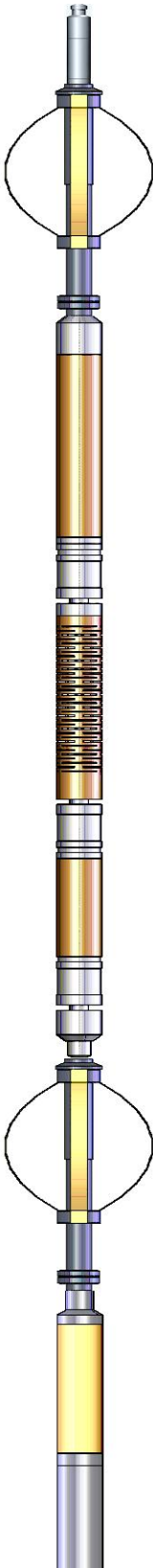


0	Line Speed (ft/min)	100
TEMP		
(degF)		


Calibration Report						
Database File	gmt_redstone_6-65_24-36_1hn_cbl.db					
Dataset Pathname	cbl2					
Dataset Creation	Tue May 03 18:41:33 2022					
Gamma Ray Calibration Report						
Serial Number:	080831					
Tool Model:	Probe275dig					
Performed:	(Not Performed)					
Calibrator Value:	1.0	GAPI				
Background Reading:	0.0	cps				
Calibrator Reading:	1.0	cps				
Sensitivity:	1.0000	GAPI/cps				
Segmented Cement Bond Log Calibration Report						
Serial Number:	FW1304-128					
Tool Model:	Probe 2.75 Radii W/Temp					
Calibration Casing Diameter:	9.625	in				
Calibration Depth:	240.425	ft				
Master Calibration, performed (Derived):						
	Raw (v)		Calibrated (mv)		Results	
	Zero	Cal	Zero	Cal	Gain	Offset
3'	0.005	0.380	1.000	51.280	134.007	0.362
CAL	0.003	0.915				
5'	0.005	0.391	1.000	51.280	130.176	0.337
SUM						
S1	-0.001	0.282	0.000	100.000	353.594	0.423
S2	0.005	0.368	0.000	100.000	275.401	-1.377
S3	0.005	0.469	0.000	100.000	215.472	-1.004
S4	0.004	0.528	0.000	100.000	190.879	-0.746
S5	0.005	0.492	0.000	100.000	205.382	-1.013
S6	0.006	0.395	0.000	100.000	257.238	-1.640
S7	0.006	0.311	0.000	100.000	328.210	-2.085
S8	0.004	0.272	0.000	100.000	372.317	-1.369
Internal Reference Calibration, performed (Not Performed):						
	Raw (v)		Calibrated (v)		Results	
	Zero	Cal	Zero	Cal	Gain	Offset
CAL	0.000	0.000	0.003	0.915	1.000	0.000

Air Zero Calibration, performed Wed Apr 27 09:05:54 2022:						
	Raw (v)		Calibrated (v)		Results	
	Zero		Zero		Offset	

3'	0.000	0.000	0.000
5'	0.000	0.000	0.000
SUM			
S1	0.000	0.000	0.000
S2	0.000	0.000	0.000
S3	0.000	0.000	0.000
S4	0.000	0.000	0.000
S5	0.000	0.000	0.000
S6	0.000	0.000	0.000
S7	0.000	0.000	0.000
S8	0.000	0.000	0.000

Sensor	Offset (ft)	Schematic	Description	Length (ft)	O.D. (in)	Weight (lb)
Temp	15.75		CHD-Titan Titan 1 7/16" GO Cablehead	1.00	1.44	5.00
			CENT-Probe275 2.75" Centralizer	2.88	2.75	36.00
WVFS8	13.52		RBT-Probe 2.75 Radii W/Temp (FW1304-128) Probe 2.75" Radial with Integral Temperature Sub	9.21	2.75	90.00
WVFS7	13.52					
WVFS6	13.52					
WVFS5	13.52					
WVFS4	13.52					
WVFS3	13.52					
WVFS2	13.52					
WVFS1	13.52					
WVFCAL	13.52					
WVF3FT	13.52					
WVF5FT	12.52					
HeadVolt	9.27					
CCL	5.44		CENT-Probe275 2.75" Centralizer	2.88	2.75	36.00
			GR-Probe275dig (080831) HT-Probe 2 3/4" Gamma GCI	6.40	2.75	57.00



GR	1.42		RT Probe 2 3/4 Gamma CCL			
		<div>Dataset:gmt_redstone_6-65_24-36_1hn_cbl.db: field/well/run1/cbl2</div> <div>Total length:22.35 ft</div> <div>Total weight:224.00 lb</div> <div>O.D.:2.75 in</div>				