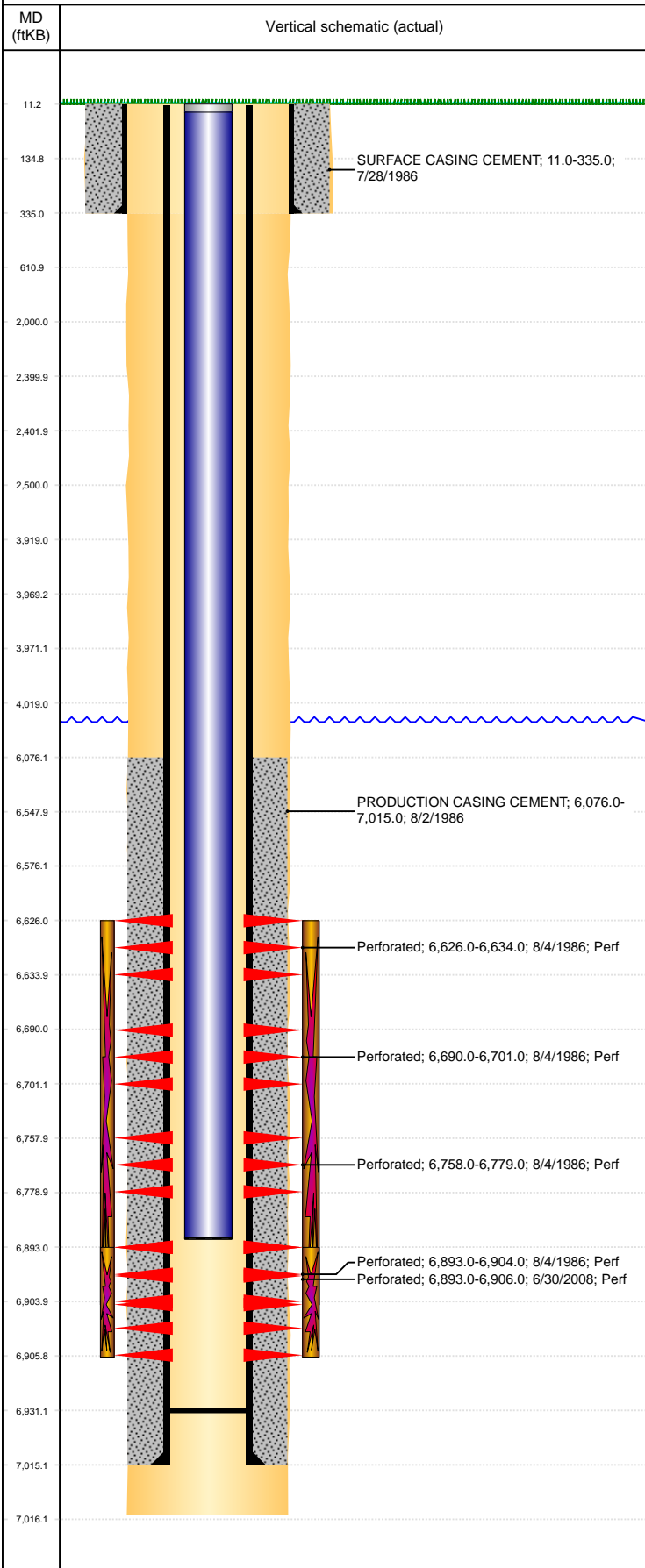


**Well Name: ALOYSIUS 34-01**

VERTICAL, ORIGINAL HOLE, 5/3/2022 2:54:05 PM



Well Header									
API 05-123-13109		Business Unit DJ BASIN		District 15		Well Config VERTICAL			
KB - GL / MSL (ft... 11.00		Spud Date 7/28/1986		P & A Date		Well Production Status PR		SoRT No	
Comment WELL FILE IS MINIMAL & SKETCHY. TIGHT SPOT @ 2000' 8/18/88									
Surface Location (Congressional)									
Qtr 3 NW	Qtr 4 NW	Section 34	Twonshp 4	Twonsh... N	Range 64	Rng E... W	Actual Latitude (°) 40.27440693	Actual Longitude (°) -104.54413594	
Wellbore Sections									
Section Des		Size (in)		Act Top, MD (ftKB)		Act Btm, MD (ftKB)			
SURFACE		12 1/4		11		335			
PRODUCTION		7 7/8		335		7,016			
Casing Strings									
Csg Des		Run Date		OD (in)		Wt/Len (lb/ft)		Grade	
Surface		7/28/1986		8 5/8		24.00		11.0	
Production		8/2/1986		4 1/2		15.10		11.0	
Cement									
Des		Start Date		Top (ftKB)		Btm (ftKB)			
SURFACE CASING CEMENT		7/28/1986		11.0		335.0			
PRODUCTION CASING CEMENT		8/2/1986		6,076.0		7,015.0			
Zone Statuses									
Zone Name		Status Date		Status		Fluid Type		Job	
CODELL		9/4/1986		PR				DRILLING/COMPLETION - ORIGINAL, 7/26/1986...	
CODELL		7/28/2008		PR				RE-FRAC, 6/26/2008 12:00	
NIOBRARA		9/4/1986		PR				DRILLING/COMPLETION - ORIGINAL, 7/26/1986...	
NIOBRARA		7/28/2008		PR				RE-FRAC, 6/26/2008 12:00	
Perforation Data									
Linked Zone		Bnch/Stg		Entered Shot Total		Top (ftKB)		Btm (ftKB)	
NIOBRARA, ORIGINAL HOLE		A		2		6,626.00		6,634.00	
NIOBRARA, ORIGINAL HOLE		B		4		6,690.00		6,701.00	
NIOBRARA, ORIGINAL HOLE		C		4		6,758.00		6,779.00	
CODELL, ORIGINAL HOLE				6		6,893.00		6,904.00	
CODELL, ORIGINAL HOLE				52		6,893.00		6,906.00	
Stimulation Intervals									
Zone		Start Date		Top (ftKB)		Btm (ftKB)			
NIOBRARA-CODELL, ORIGINAL HOLE		8/9/1986		6,626.0		6,904.0			
CODELL, ORIGINAL HOLE		7/18/2008		6,893.0		6,906.0			
Other In Hole									
Run Date		Des		Make		OD (in)		Top (ftKB)	
Logs									
Date		Type		Top, MD (ftKB)		Btm, MD (ftKB)			
8/1/1986		Induction		330.0		7,019.0			
8/1/1986		SPECTRAL DENSITY		3,500.0		6,996.0			
8/4/1986		Acoustic		5,930.0		6,927.0			
10/27/2016		GYRO		0.0		6,800.0			
6/12/2020		GYRO		0.0		6,800.0			
Plug Back Total Depths									
Date		Type		Com		Depth (ftKB)			
6/29/2008		FILL				6,933.0			
7/22/2008		FILL				6,931.0			