



1 Mile Offset:
0 -PR/SI Sussex Well
Deepest WW: 465'

WELLBORE DIAGRAM PROPOSED WBD

603 FNL & 611 FWL

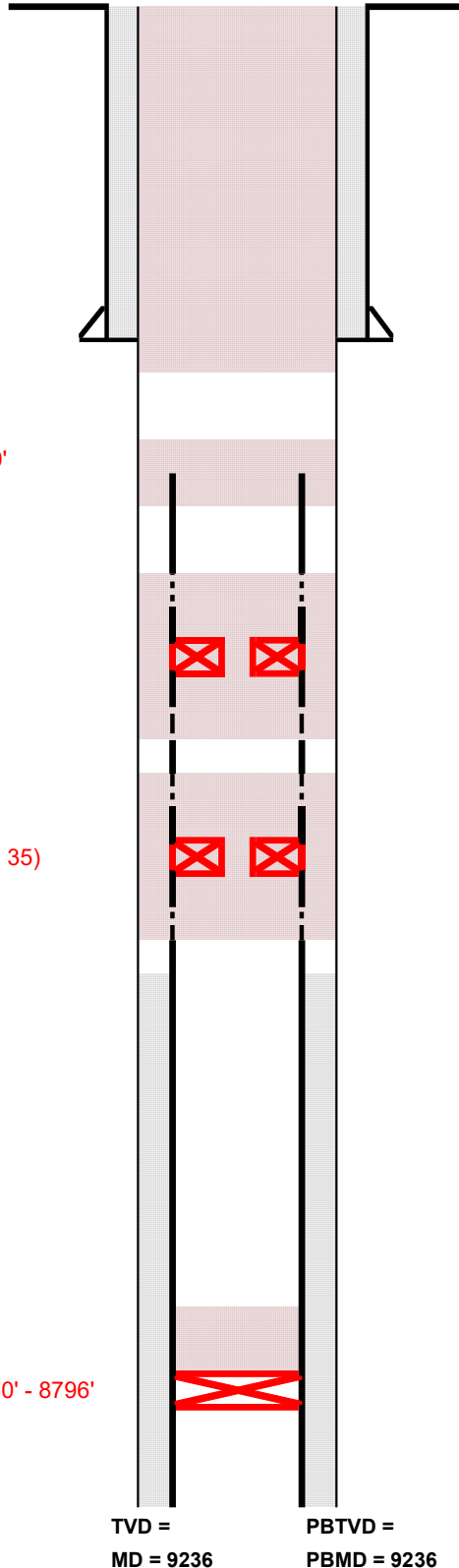
Pump 275 sx Class G+3%CC
from 700' to surface

Cut & pull casing from 1200'
pump stub plug from 1250' to 700'
with 285 sx Class G+3%CC

Perf @ 4200'
Set CICR @ 4300'
Pump 82 sx thru CICR (Class G)
leave 20 sx on top (ETOC 4193')
Perf @ 4500'

Perf @ 6850'
Set CICR @ 6950'
Pump 100 sx thru CICR (Thermal 35)
leave 20 sx on top (ETOC 6808')
Perf @ 7150'

Set CIBP @ 9150'
Pump 50 sx Thermal 35 from 9150' - 8796'



Operator:	Great Western Operating Company
Well Name:	UPRR Pierce Townsite 1
Lease Number:	
Location:	NWNW S26-T8N-R66W
Field:	Pierce - #69000
County, State:	Weld, CO
API Number:	05-123-05520
Diagram Date:	5/3/2022
Lat/Long	40.63853 / -104.75179

KB 5053

GL 5037

Spud Date: 10/14/1956

Surface Casing :

10-3/4" 40.5# csg set @ 525'
Cmt w/ 375 sx

Production Casing :

7" 23 & 26# csg set @ 9237'
Cmt w/ 350 sx

Formation Tops:

Niobrara	7043
Lyons	9158

TOC @ 7626'

Perforations

Lyons	9160 - 9198
-------	-------------