



Terra Energy Partners, LLC

LONG STRING POST JOB REPORT

FEDERAL RWF 32-9 05-045-24400
S:9 T:6S R:94W Garfield CO

CallSheet #: 80237
Proposal #: 57814



LONG STRING Post Job Report

Attention: Dustin Childers | (936) 524-8828 | dchilders@terraep.com
Terra Energy Partners, LLC
4828 Loop Central Dr., Suite 900 | Houston, TX 77081

Dear Dustin Childers,

Thank you for the opportunity to provide cementing services on this well. American Cementing strives to achieve complete customer satisfaction. If you have any questions regarding the services or data provided, please contact American Cementing at any time.

Sincerely,

Michael Harold

Field Engineer II | (970) 773-3636 | michael.harold@americacementing.com

Field Office 28730 US-6, Rifle, CO 81650
Phone: (970) 657-1157

Job Details & Summary

Geometry

Type	Function	OD (in)	ID (in)	Weight (lb/ft)	Thread	Top (ft)	Bottom (ft)	Excess (%)
Casing	Outer	9.625	8.921	36	n/a	0	1114	0
Open Hole	Outer	n/a	8.75	n/a	n/a	1100	9798	55
Casing	Inner	4.5	4	11.6	n/a	0	9794	0

Timing

Event	Date/Time
Call Out	2/16/2022 17:00
Depart Facility	2/16/2022 18:45
On Location	2/16/2022 19:30
Rig Up Iron	2/16/2022 20:00
Job Started	2/17/2022 01:29
Job Completed	2/17/2022 03:36
Rig Down Iron	2/17/2022 03:50
Depart Location	2/17/2022 05:00

Equipment / People

Unit Type	Unit	Power Unit	Employee #1
Field Storage Silo	FSS(CTS)-438		
Field Storage Silo	FSS(CTS)-470		
Cement Trailer	CTF-263	TRB-421	Carrasco, Joel
AS Cement Trailer	CTF-558	TRC(TRB)-195	
AS Cement Trailer	CTF-7145	TRC(TRB)-425	
AS Cement Trailer	CTF-019	TRC(TRB)-424	
Light Duty Vehicles	LDV-063		Castillo, Francisco
Cement Pump	CPF-012	TRH-964	McNeal, Lawrence

General Job Information

Metrics	Value
Well Fluid Density	11 lb/gal
Well Fluid Type	WBM
Rig Circulation Vol	900 bbls
Rig Circulation Time	1.5 hours
Calculated Displacement	151 bbls
Actual Displacement	151 bbls
Total Spacer to Surface	0 bbls
Total CMT to Surface	0 bbls
Well Topped Out	N/A

Job Details

Metrics	Value
Flare Prior to Job	No
Flare Prior to Job	0 units
Flare During Job	No
Flare During Job	0 units
Flare at End of Job	No
Flare at End of Job	0 units
Well Full Prior to Job	Yes
Well Fluid Density Into Well	11 lb/gal
Well Fluid Density Out of Well	11 lb/gal

Job Details (cont.)

Metrics	Value
BHCT	164 °F
BHST	234 °F

Water Analysis

Metrics	Value	Recommended
Water Source	Upright Rig Tank	
Temperature	61 °F	50-80 °F
pH Level	7	5.5-8.5
Chlorides	0 mg/L	0-3000 mg/L
Total Alkalinity	240	0-1000
Total Hardness	250 mg/L	0-500 mg/L
Carbonates	0 mg/L	0-100 mg/L
Sulfates	200 mg/L	0-1500 mg/L
Potassium	250 mg/L	0-3000 mg/L
Iron	0 mg/L	0-300 mg/L

Circulation

Lost Circulation Experienced	Losses into Spacer	Losses into Cement	Losses into Displacement
No			

Job Execution Information

Fluid	Product	Function	Density (lb/gal)	Yield (ft ³ /sk)	Water Rq. (gal/sk)	Water Rq. (gal/bbl)	Volume (sks)	Volume (bbl)	Designed Top (ft)
1	Water	Flush	8.34			42.00		10.00	4233
2	Mud Flush	Flush	8.45			40.86		20.00	4351
3	Water	Flush	8.34			42.00		10.00	4587
4	Primary Cement	Primary	14.20	1.72	8.08		1418.00	434.00	4705
5	Displacement	DisplacementFinal	8.34			42.00		151.00	0

Job Fluid Details

Fluid	Type	Fluid	Product	Function	Conc.	Uom
2	Flush	Mud Flush	SAPP	Surfactant	10.00	lb/bbl
2	Flush	Mud Flush	SS-201	Surfactant	0.50	gal/bbl
4	Primary	Primary Cement	CLASS G	Cement	80.00	%
4	Primary	Primary Cement	FLY ASH (POZZOLAN)	Extender	20.00	%
4	Primary	Primary Cement	FL-66	FluidLoss	0.40	%BWOB
4	Primary	Primary Cement	FP-24	Defoamer	0.30	%BWOB
4	Primary	Primary Cement	GW-86	Viscosifier	0.10	%BWOB
4	Primary	Primary Cement	IntegraSeal POLI	LostCirculation	0.25	lb/sk
4	Primary	Primary Cement	R-3	Retarder	0.30	%BWOB
4	Primary	Primary Cement	S-8	StrengthRetgression	27.00	%BWOB

Job Logs

Line	Event	Date (MM/DD/YY)	Time (HH:MM)	Density (lb/gal)	Pump Rate (bpm)	Pump Volume (bbls)	Pipe Pressure (psi)	Comment
1	CALLOUT	2/16/2022	17:00					ON LOCATION AT 20:30 HRS
2	LEAVE YARD	2/16/2022	18:45					CREW LEAVE THE YARD
3	ON LOCATION	2/16/2022	19:30					CREW ON LOCATION
4	RIG UP	2/16/2022	20:00					RIG UP MEETING, RIG UP
5	SAFETY MEETING	2/17/2022	01:00					PRE-JOB SAFETY MEETING
6	PRESSURE TEST	2/17/2022	01:24				5253	PRESSURE TEST LINES
7	PUMP SPACER	2/17/2022	01:29	8.34	5.5	10	697	WATER SPACER
8	PUMP SPACER	2/17/2022	01:31	9	5.5	20	851	MUD FLUSH SPACER
9	PUMP SPACER	2/17/2022	01:34	8.34	5.5	10	837	WATER SPACER
10	PUMP CEMENT	2/17/2022	01:41	14.2	6.8	50	1451	1418 SKS/434 BBLS AT 14.2 PPG
11	PUMP CEMENT	2/17/2022	01:48	14.2	6.8	50	1097	100 BBLS CEMENT PUMPED
12	PUMP CEMENT	2/17/2022	01:56	14.2	5	50	595	150 BBLS CEMENT PUMPED
13	PUMP CEMENT	2/17/2022	02:06	14.2	6	50	1107	200 BBLS CEMENT PUMPED
14	PUMP CEMENT	2/17/2022	02:16	14.2	6	50	1163	250 BBLS CEMENT PUMPED
15	PUMP CEMENT	2/17/2022	02:28	14.2	5.5	50	897	300 BBLS CEMENT PUMPED
16	PUMP CEMENT	2/17/2022	02:35	14.2	5.5	50	853	350 BBLS CEMENT PUMPED
17	PUMP CEMENT	2/17/2022	02:47	14.2	5.5	84	845	434 BBLS CEMENT PUMPED
18	SHUTDOWN	2/17/2022	02:59					WASH LINES AND PUMP, DROP PLUG
19	DISPLACEMENT	2/17/2022	03:10	8.4	6.3	47	1145	DISPLACEMENT WATER + KCL
20	DISPLACEMENT	2/17/2022	03:18	8.4	6.3	47	2191	94 BBLS DISPLACEMENT PUMPED
21	DISPLACEMENT	2/17/2022	03:26	8.4	5.3	47	2865	141 BBLS DISPLACEMENT PUMPED
22	SLOW RATE	2/17/2022	03:33	8.34	3	10	2731	SLOW RATE LAST 10 BBLS
23	LAND PLUG	2/17/2022	03:36					LAND PLUG, FULL RETURNS
24	CHECK FLOATS	2/17/2022	03:41					FLOATS HELD, 1.75 BBLS FLOW BACK
25	RIG DOWN	2/17/2022	03:50					RIG DOWN MEETING, RIG DOWN
26	LEAVE LOCATION	2/17/2022	05:00					CREW LEAVE LOCATION

Pump Diagrams

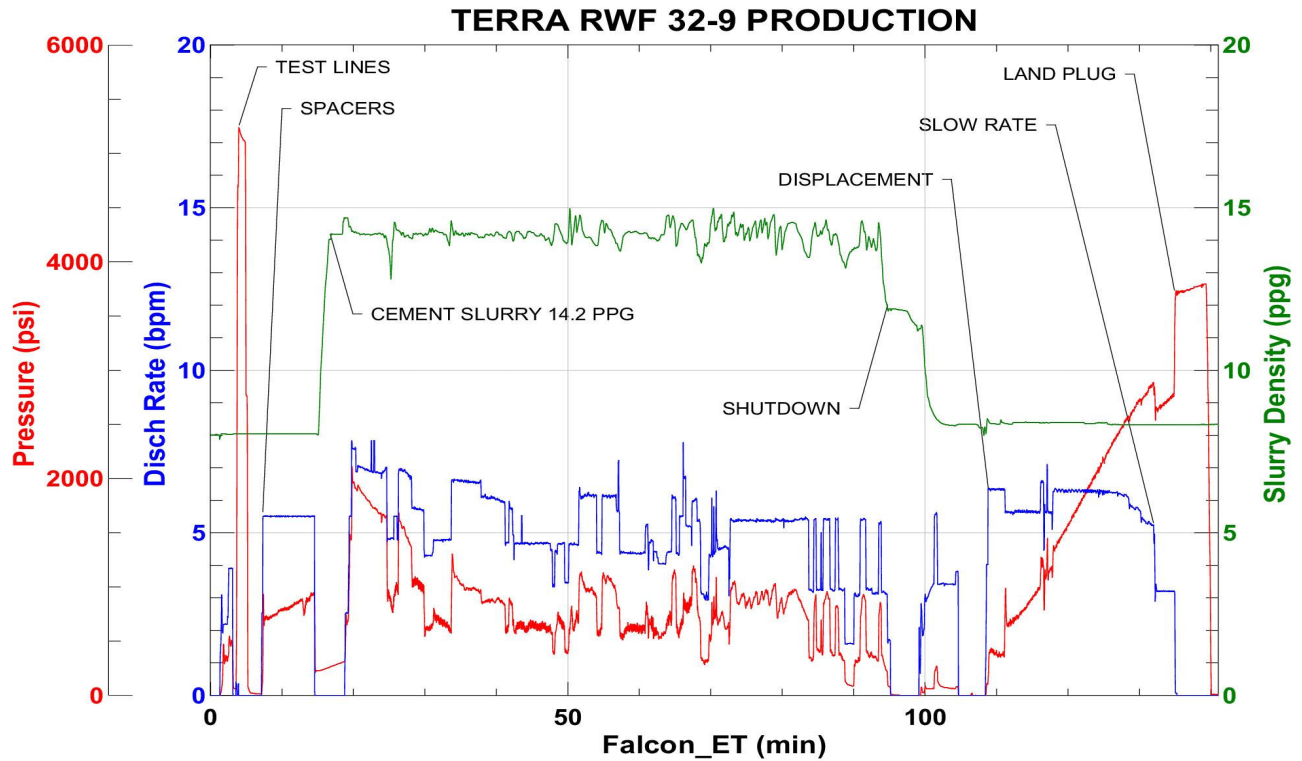


JobMaster Program Version 5.01C1

Job Number: 80237

Customer: TERRA

Well Name: RWF 32-9



BJ Services

Job Start: Thursday, February 17, 2022