



Terra Energy Partners, LLC

SURFACE POST JOB REPORT

FEDERAL RWF 431-9 05-045-24404
S:9 T:6S R:94W Garfield CO

CallSheet #: 80128
Proposal #: 57481



SURFACE Post Job Report

Attention: Dustin Childers | (936) 524-8828 | dchilders@terraep.com
Terra Energy Partners, LLC
4828 Loop Central Dr., Suite 900 | Houston, TX 77081

Dear Dustin Childers,

Thank you for the opportunity to provide cementing services on this well. American Cementing strives to achieve complete customer satisfaction. If you have any questions regarding the services or data provided, please contact American Cementing at any time.

Sincerely,

Michael Harold

Field Engineer II | (970) 773-3636 | michael.harold@americacementing.com

Field Office 28730 US-6, Rifle, CO 81650
Phone: (970) 657-1157

Job Details & Summary

Geometry

Type	Function	OD (in)	ID (in)	Weight (lb/ft)	Thread	Top (ft)	Bottom (ft)	Excess (%)
Casing	Outer	20	19.124	94	n/a	0	120	0
Open Hole	Outer	n/a	13.5	n/a	n/a	120	500	16
Open Hole	Outer	n/a	13.5	n/a	n/a	500	1127	16
Casing	Inner	9.625	8.921	36	n/a	0	1121.21	0

Equipment / People

Unit Type	Unit	Power Unit	Employee #1
Cement Trailer	CTF-007	TRC(TRB)-090	Kelsey, John
Cement Pump	CPF-053	TRH-959	Hale, Jason
Light Duty Vehicles	LDV-083		Linn, Paul

Timing

Event	Date/Time
Call Out	2/4/2022 16:20
Depart Facility	2/4/2022 16:55
On Location	2/4/2022 22:12
Rig Up Iron	2/4/2022 22:24
Job Started	2/5/2022 00:07
Job Completed	2/5/2022 01:28
Rig Down Iron	2/5/2022 01:44
Depart Location	2/5/2022 02:40

General Job Information

Metrics	Value
Well Fluid Density	8.8 lb/gal
Well Fluid Type	WBM
Rig Circulation Vol	300 bbls
Rig Circulation Time	0.5 hours
Calculated Displacement	82.9 bbls
Actual Displacement	83 bbls
Total Spacer to Surface	25 bbls
Total CMT to Surface	23 bbls
Well Topped Out	No

Job Details

Metrics	Value
Flare Prior to Job	No
Flare Prior to Job	0 units
Flare During Job	No
Flare During Job	0 units
Flare at End of Job	No
Flare at End of Job	0 units
Well Full Prior to Job	Yes
Well Fluid Density Into Well	8.7 lb/gal
Well Fluid Density Out of Well	8.7 lb/gal

Job Details (cont.)

Metrics	Value
BHCT	80 °F
BHST	97 °F

Circulation

Lost Circulation Experienced	Losses into Spacer	Losses into Cement	Losses into Displacement
No			

Job Execution Information

Fluid	Product	Function	Density (lb/gal)	Yield (ft ³ /sk)	Water Rq. (gal/sk)	Water Rq. (gal/bbl)	Volume (sks)	Volume (bbl)	Designed Top (ft)
1	Water	Flush	8.34			42.00		20.00	0
2	Additional Lead	Lead	12.30	2.34	13.42		50.00	20.83	0
3	Lead Cement	Lead	12.30	2.34	13.42		169.00	70.39	0
4	Tail Cement	Tail	12.80	2.08	11.46		174.00	64.35	500
5	Water	DisplacementFinal	8.34			42.00		82.00	0

Job Fluid Details

Fluid	Type	Fluid	Product	Function	Conc.	Uom
2	Lead	Additional Lead	ASTM TYPE I/II	Cement	100.00	%
2	Lead	Additional Lead	A-10	Accelerator	5.00	%BWOB
2	Lead	Additional Lead	A-2	Accelerator	2.00	lb/sk
2	Lead	Additional Lead	A-7P	Accelerator	2.00	lb/sk
2	Lead	Additional Lead	FP-24	Defoamer	0.30	%BWOB
2	Lead	Additional Lead	IntegraSeal POLI	LostCirculation	0.25	lb/sk
2	Lead	Additional Lead	STATIC FREE	Other	0.01	lb/sk
3	Lead	Lead Cement	ASTM TYPE I/II	Cement	100.00	%
3	Lead	Lead Cement	A-10	Accelerator	5.00	%BWOB
3	Lead	Lead Cement	A-2	Accelerator	2.00	lb/sk
3	Lead	Lead Cement	A-7P	Accelerator	2.00	lb/sk
3	Lead	Lead Cement	FP-24	Defoamer	0.30	%BWOB
3	Lead	Lead Cement	IntegraSeal POLI	LostCirculation	0.25	lb/sk
3	Lead	Lead Cement	STATIC FREE	Other	0.01	lb/sk
4	Tail	Tail Cement	ASTM TYPE I/II	Cement	100.00	%
4	Tail	Tail Cement	A-10	Accelerator	5.00	%BWOB
4	Tail	Tail Cement	A-2	Accelerator	2.00	lb/sk
4	Tail	Tail Cement	A-7P	Accelerator	2.00	lb/sk
4	Tail	Tail Cement	FP-24	Defoamer	0.30	%BWOB
4	Tail	Tail Cement	IntegraSeal POLI	LostCirculation	0.25	lb/sk
4	Tail	Tail Cement	STATIC FREE	Other	0.01	lb/sk

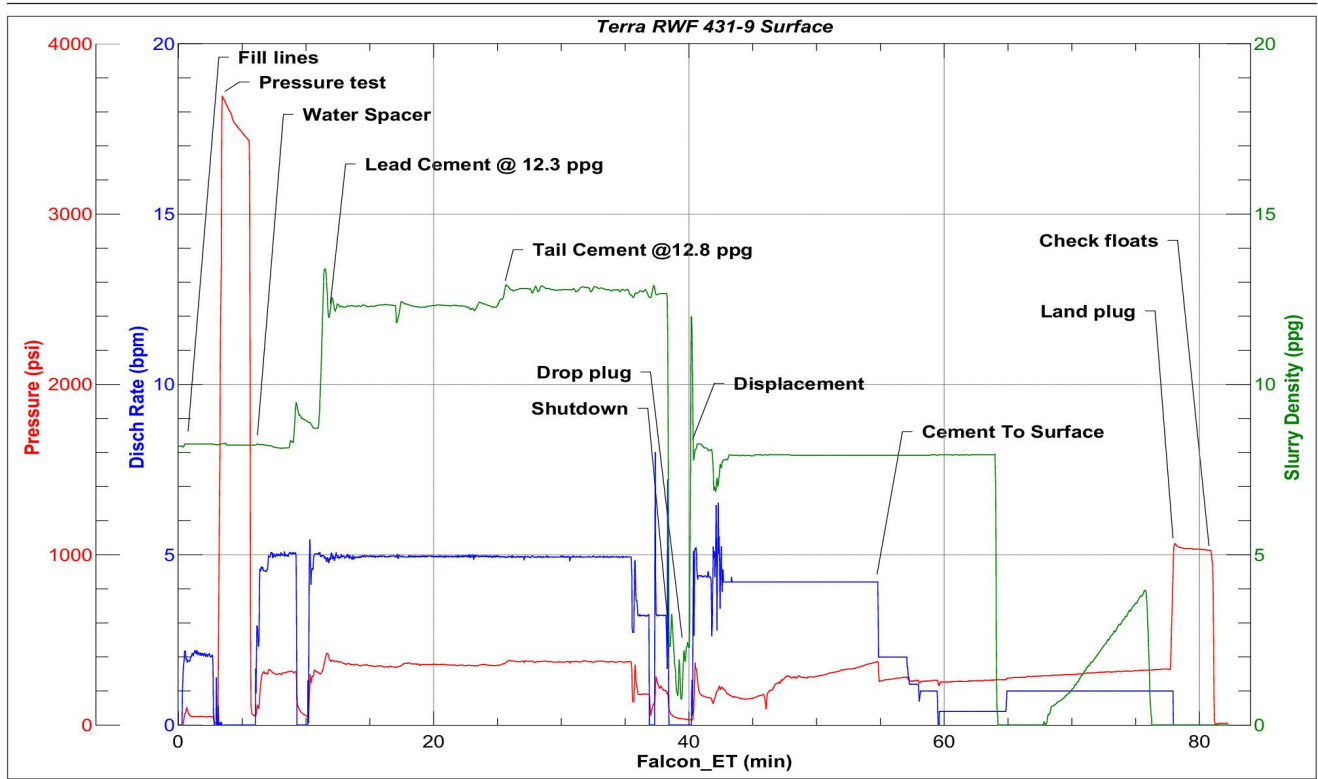
Job Logs

Line	Event	Date (MM/DD/YY)	Time (HH:MM)	Density (lb/gal)	Pump Rate (bpm)	Pump Volume (bbls)	Pipe Pressure (psi)	Comment
1	Callout	2/4/2022	16:20					Callout, on location of midnight 2/4/22
2	Safety Meeting	2/4/2022	16:20					Pre-Convoy safety meeting
3	Depart Location	2/4/2022	16:55					Depart from Rifle yard for H&P 329
4	Arrive On Location	2/4/2022	22:12					Arrive on location, rig was running casing
5	Safety Meeting	2/4/2022	22:18					Pre-rig up safety meeting
6	Rig Up Iron	2/4/2022	22:24					Rig up all ground equipment
7	Safety Meeting	2/4/2022	23:20					Pre-Job safety meeting with rig crew, company man, and American Cementing crew
8	Rig Up Iron	2/4/2022	23:51					Load plug in plug container (verified by company man), stab plug container, hook up lines
9	Fill Lines	2/5/2022	00:07	8.4	2	5	121	Fill lines
10	Pressure Test Lines	2/5/2022	00:09				3621	Pressure test to 3621
11	Pump Spacer	2/5/2022	00:13	8.4	5	25	321	Pump water spacer, got returns with 25 bbls away
12	Pump Lead Cement	2/5/2022	00:18	12.3	5	5	374	Pump Lead Cement @ 12.3 ppg
13	Pump Lead Cement	2/5/2022	00:27	12.3	5	50	357	Pump Lead Cement
14	Pump Lead Cement	2/5/2022	00:32	12.3	5	75	351	Pump Lead Cement
15	Pump Tail Cement	2/5/2022	00:33	12.8	5	5	361	Pump Tail Cement @ 12.8 ppg
16	Pump Tail Cement	2/5/2022	00:41	12.8	5	50	372	Pump Tail Cement
17	Pump Tail Cement	2/5/2022	00:44	12.8	3.5	62	151	Pump Tail Cement
18	Shutdown	2/5/2022	00:44					Shutdown with 62 bbls of Tail away
19	Drop Top Plug	2/5/2022	00:47					Drop plug, verified by company man
20	Pump Displacement	2/5/2022	00:49	8.4	4	10	181	Pump Displacement
21	Pump Displacement	2/5/2022	00:59	8.4	4	50	357	Pump Displacement
22	Cement Back to Surface	2/5/2022	01:02					23 bbls of Cement to surface
23	Pump Displacement	2/5/2022	01:03	8.4	2	60	261	Pump Displacement
24	Pump Displacement	2/5/2022	01:13	8.4	1	70	288	Pump Displacement
25	Pump Displacement	2/5/2022	01:25	8.4	1	83	332	Pump Displacement
26	Land Plug	2/5/2022	01:25				1000	Land the plug @ 332 psi took to 1000 psi
27	Check Floats	2/5/2022	01:28					Check floats, floats held 1/2 bbl back
28	Safety Meeting	2/5/2022	01:36					Pre-Rig down safety meeting
29	Safety Meeting	2/5/2022	02:33					Pre-Convoy safety meeting
30	Depart Location	2/5/2022	02:40					Depart from location for Rifle yard. Thank you for using American Cementing, Andrew Linn, and crew

Pump Diagrams



JobMaster Program Version 5.01C1
Job Number: 80128
Customer: Terra
Well Name: RWF 431-9



BJ Services

Job Start: Saturday, February 05, 2022