



Terra Energy Partners, LLC

LONG STRING POST JOB REPORT

FEDERAL RWF 344-9 05-045-24393
S:9 T:6S R:94W Garfield CO

CallSheet #: 80069
Proposal #: 57480



LONG STRING Post Job Report

Attention: Dustin Childers | (936) 524-8828 | dchilders@terraep.com
Terra Energy Partners, LLC
4828 Loop Central Dr., Suite 900 | Houston, TX 77081

Dear Dustin Childers,

Thank you for the opportunity to provide cementing services on this well. American Cementing strives to achieve complete customer satisfaction. If you have any questions regarding the services or data provided, please contact American Cementing at any time.

Sincerely,

Michael Harold

Field Engineer II | (970) 773-3636 | michael.harold@americacementing.com

Field Office 28730 US-6, Rifle, CO 81650
Phone: (970) 657-1157

Job Details & Summary

Geometry

Type	Function	OD (in)	ID (in)	Weight (lb/ft)	Thread	Top (ft)	Bottom (ft)	Excess (%)
Casing	Outer	9.625	8.921	36	n/a	0	1118	0
Open Hole	Outer	n/a	8.75	n/a	n/a	1100	9602	55
Casing	Inner	4.5	4	11.6	n/a	0	9595.42	0

Timing

Event	Date/Time
Call Out	2/3/2022 14:20
Depart Facility	2/3/2022 19:16
On Location	2/3/2022 20:22
Rig Up Iron	2/3/2022 21:00
Job Started	2/3/2022 23:22
Job Completed	2/4/2022 01:27
Rig Down Iron	2/4/2022 01:52
Depart Location	2/4/2022 02:47

Equipment / People

Unit Type	Unit	Power Unit	Employee #1
Field Storage Silo	FSS(CTS)-438		
Field Storage Silo	FSS(CTS)-470		
AS Cement Trailer	CTF-138	TRC(TRB)-201	
AS Cement Trailer	CTF-9299	TRC(TRB)-195	
AS Cement Trailer	CTF-558	TRC(TRB)-194	
Cement Trailer	CTF-286	TRC(TRB)-090	Kelsey, John
Light Duty Vehicles	LDV-083		Linn, Paul
Cement Pump	CPF-053	TRH-959	Hale, Jason

General Job Information

Metrics	Value
Well Fluid Density	11 lb/gal
Well Fluid Type	WBM
Rig Circulation Vol	400 bbls
Rig Circulation Time	1 hours
Calculated Displacement	148.1 bbls
Actual Displacement	148 bbls
Total Spacer to Surface	0 bbls
Total CMT to Surface	0 bbls
Well Topped Out	N/A

Job Details

Metrics	Value
Flare Prior to Job	No
Flare Prior to Job	5896 units
Flare During Job	No
Flare During Job	3657 units
Flare at End of Job	No
Flare at End of Job	0 units
Well Full Prior to Job	Yes
Well Fluid Density Into Well	11 lb/gal
Well Fluid Density Out of Well	11 lb/gal

Job Details (cont.)

Metrics	Value
BHCT	164 °F
BHST	234 °F

Water Analysis

Metrics	Value	Recommended
Water Source	Upright Rig Tank	
Temperature	86.3 °F	50-80 °F
pH Level	8	5.5-8.5
Chlorides	650 mg/L	0-3000 mg/L
Total Alkalinity	>250	0-1000
Total Hardness	120 mg/L	0-500 mg/L
Carbonates	0 mg/L	0-100 mg/L
Sulfates	360 mg/L	0-1500 mg/L
Potassium	185 mg/L	0-3000 mg/L
Iron	0 mg/L	0-300 mg/L

Circulation

Lost Circulation Experienced	Losses into Spacer	Losses into Cement	Losses into Displacement
No			

Job Execution Information

Fluid	Product	Function	Density (lb/gal)	Yield (ft ³ /sk)	Water Rq. (gal/sk)	Water Rq. (gal/bbl)	Volume (sks)	Volume (bbl)	Designed Top (ft)
1	Water	Flush	8.34			42.00		10.00	4094
2	Mud Flush	Flush	8.45			40.86		20.00	4212
3	Water	Flush	8.34			42.00		10.00	4448
4	Primary Cement	Primary	14.20	1.72	8.08		1416.00	434.34	4566
5	Displacement	DisplacementFinal	8.34			42.00		150.00	0

Job Fluid Details

Fluid	Type	Fluid	Product	Function	Conc.	Uom
2	Flush	Mud Flush	SAPP	Surfactant	10.00	lb/bbl
2	Flush	Mud Flush	SS-201	Surfactant	0.50	gal/bbl
4	Primary	Primary Cement	CLASS G	Cement	80.00	%
4	Primary	Primary Cement	FLY ASH (POZZOLAN)	Extender	20.00	%
4	Primary	Primary Cement	FL-66	FluidLoss	0.40	%BWOB
4	Primary	Primary Cement	FP-24	Defoamer	0.30	%BWOB
4	Primary	Primary Cement	GW-86	Viscosifier	0.10	%BWOB
4	Primary	Primary Cement	IntegraSeal POLI	LostCirculation	0.25	lb/sk
4	Primary	Primary Cement	R-3	Retarder	0.30	%BWOB
4	Primary	Primary Cement	S-8	StrengthRetrogression	27.00	%BWOB

Job Logs

Line	Event	Date (MM/DD/YY)	Time (HH:MM)	Density (lb/gal)	Pump Rate (bpm)	Pump Volume (bbls)	Pipe Pressure (psi)	Comment
1	Callout	2/3/2022	14:20					Callout, on location of 23:00 on 2/3/22
2	Safety Meeting	2/3/2022	18:45					Pre-convoy safety meeting
3	Depart Location	2/3/2022	19:16					Depart from Rifle yard for H&P 329
4	Arrive On Location	2/3/2022	20:22					Arrive on location, rig was running casing
5	Safety Meeting	2/3/2022	20:45					Pre-Rig up safety meeting
6	Rig Up Iron	2/3/2022	21:00					Rig up all ground equipment
7	Safety Meeting	2/3/2022	22:55					Pre-Job safety meeting with rig crew, company man, and American Cementing
8	Rig Up Iron	2/3/2022	23:14					Load plug in plug container (verified by company man), stab plug container, and hook up lines
9	Fill Lines	2/3/2022	23:22	8.4	2	5	388	Fill lines
10	Pressure Test Lines	2/3/2022	23:24				5526	Pressure test to 5526 psi
11	Pump Spacer	2/3/2022	23:28	8.4	5	10	596	Pump Water spacer
12	Pump Spacer	2/3/2022	22:30	8.6	5	20	671	Pump Mud flush
13	Pump Spacer	2/3/2022	22:36	8.4	5	10	618	Pump Water spacer
14	Pump Cement	2/3/2022	22:38	14.2	7.5	5	1928	Pump Cement @ 14.2 ppg
15	Pump Cement	2/3/2022	23:45	14.2	6	50	905	Pump Cement
16	Pump Cement	2/3/2022	22:54	14.2	7	100	946	Pump Cement
17	Pump Cement	2/4/2022	00:02	14.2	3.5	150	360	Pump Cement
18	Pump Cement	2/4/2022	00:12	14.2	6	200	822	Pump Cement
19	Pump Cement	2/4/2022	00:21	14.2	7	250	948	Pump Cement
20	Pump Cement	2/4/2022	00:29	14.2	6.5	300	764	Pump Cement
21	Pump Cement	2/4/2022	00:36	14.2	4.5	350	435	Pump Cement
22	Pump Cement	2/4/2022	00:50	14.2	5	400	612	Pump Cement
23	Pump Cement	2/4/2022	00:56	14.2	2	428	281	Pump Cement
24	Shutdown	2/4/2022	00:56					Shutdown with 281 bbls of cement away
25	Clean Pumps and Lines	2/4/2022	00:59					Clean pumps and lines to pit
26	Drop Top Plug	2/4/2022	01:05					Drop Plug verified by company man
27	Pump Displacement	2/4/2022	01:07	8.4	8	10	608	Pump KCL Displacement
28	Pump Displacement	2/4/2022	01:13	8.4	10	50	2054	Pump KCL Displacement
29	Pump Displacement	2/4/2022	01:18	8.4	10	100	2742	Pump KCL Displacement
30	Pump Displacement	2/4/2022	01:23	8.4	9	138	3118	Pump KCL Displacement
31	Pump Displacement	2/4/2022	01:25	8.4	4	148	2640	Pump KCL Displacement
32	Land Plug	2/4/2022	01:25				3475	Land the plug @ 2640 psi took to 3475 psi
33	Check Floats	2/4/2022	01:27					Check floats, floats held 2 bbls back
34	Safety Meeting	2/4/2022	01:33					Pre-rig down safety meeting
35	Rig Down Iron	2/4/2022	01:52					Rig down all equipment
36	Safety Meeting	2/4/2022	02:38					Pre-Convoy safety meeting
37	Depart Location	2/4/2022	02:47					Depart from location for Rifle yard. Thank you for using American Cementing, Andrew Linn, and crew

Pump Diagrams

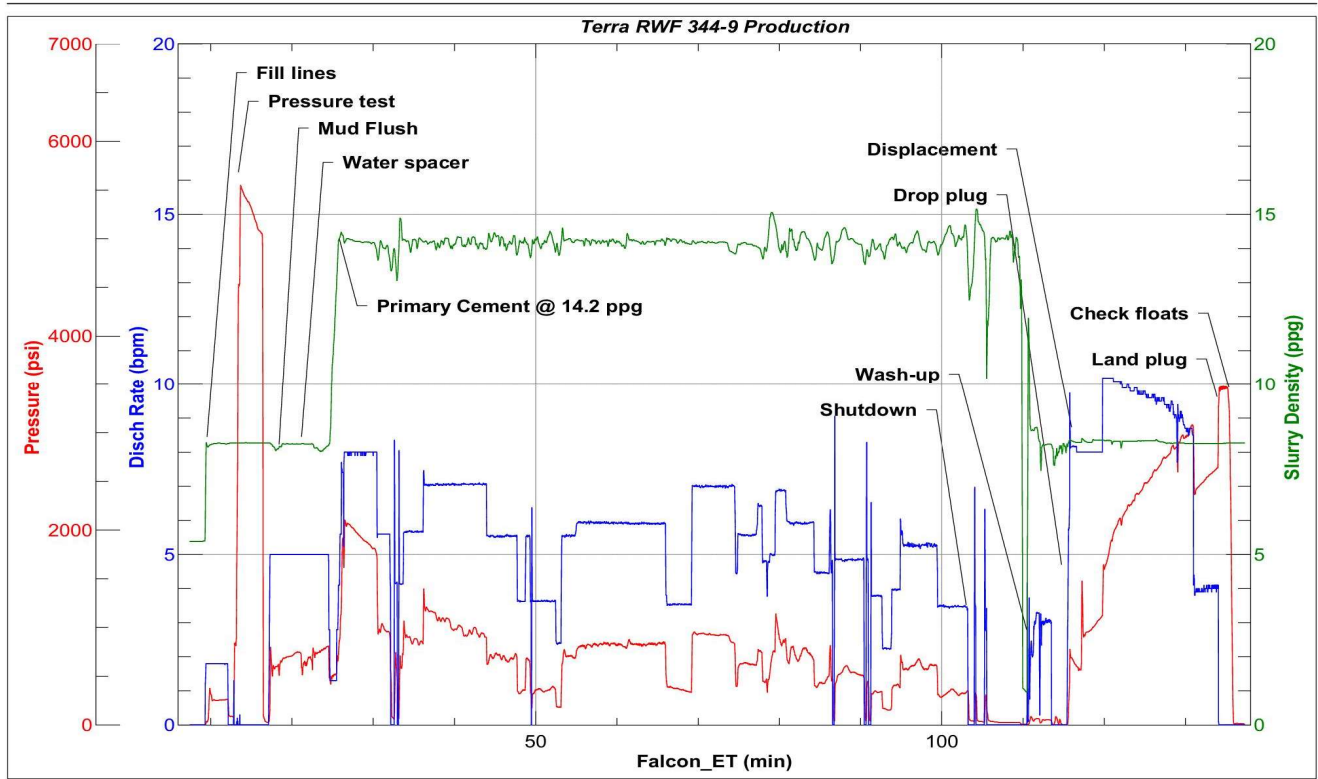


JobMaster Program Version 5.01C1

Job Number: 80069

Customer: Terra

Well Name: RWF 344-9



BJ Services

Job Start: Thursday, February 03, 2022