



---

# **Terra Energy Partners, LLC**

## **LONG STRING POST JOB REPORT**

**FEDERAL RWF 44-9 05-045-24392**  
**S:9 T:6S R:94W Garfield CO**

CallSheet #: 80006  
Proposal #: 57297



**LONG STRING Post Job Report**

**Attention:** Dustin Childers | (936) 524-8828 | dchilders@terraep.com  
Terra Energy Partners, LLC  
4828 Loop Central Dr., Suite 900 | Houston, TX 77081

---

Dear Dustin Childers,

Thank you for the opportunity to provide cementing services on this well. American Cementing strives to achieve complete customer satisfaction. If you have any questions regarding the services or data provided, please contact American Cementing at any time.

Sincerely,

**Michael Harold**

Field Engineer II | (970) 773-3636 | michael.harold@americacementing.com

**Field Office**      28730 US-6, Rifle, CO 81650  
Phone: (970) 657-1157

## Job Details & Summary

### Geometry

Type	Function	OD (in)	ID (in)	Weight (lb/ft)	Thread	Top (ft)	Bottom (ft)	Excess (%)
Casing	Outer	9.625	8.921	36	n/a	0	1100	0
Open Hole	Outer	n/a	8.75	n/a	n/a	1100	9591	55
Casing	Inner	4.5	4	11.6	n/a	0	9591	0

### Equipment / People

Unit Type	Unit	Power Unit	Employee #1
AS Cement Trailer	CTF-138	TRS-034	Woronovitch, Collin
AS Cement Trailer	CTF-558	TRS-034	
AS Cement Trailer	CTF-9299	TRC(TRB)-112	Gonzales, Ivan
Cement Trailer	CTF-522	TRC(TRB)-090	Manuelito, Hamilton
Field Storage Silo	FSS(CTS)-470		
Field Storage Silo	FSS(CTS)-438		
Cement Pump	CPF-052	TRH-959	McNeal, Lawrence
Light Duty Vehicles	LDV-061		Aden, Mark

### Timing

Event	Date/Time
Call Out	1/27/2022 14:00
Depart Facility	1/27/2022 18:50
On Location	1/27/2022 19:20
Rig Up Iron	1/27/2022 20:40
Job Started	1/27/2022 23:27
Job Completed	1/28/2022 01:42
Rig Down Iron	1/28/2022 01:55
Depart Location	1/28/2022 03:00

### General Job Information

Metrics	Value
Well Fluid Density	11 lb/gal
Well Fluid Type	WBM
Rig Circulation Vol	640 bbls
Rig Circulation Time	1 hours
Calculated Displacement	148 bbls
Actual Displacement	148 bbls
Total Spacer to Surface	0 bbls
Total CMT to Surface	0 bbls
Well Topped Out	No

### Job Details

Metrics	Value
Flare Prior to Job	No
Flare Prior to Job	0 units
Flare During Job	No
Flare During Job	0 units
Flare at End of Job	No
Flare at End of Job	0 units
Well Full Prior to Job	Yes
Well Fluid Density Into Well	11 lb/gal
Well Fluid Density Out of Well	11 lb/gal

### Job Details (cont.)

Metrics	Value
BHCT	164 °F
BHST	234 °F

### Water Analysis

Metrics	Value	Recommended
Water Source	Upright Rig Tank	
Temperature	52.3 °F	50-80 °F
pH Level	7	5.5-8.5
Chlorides	0 mg/L	0-3000 mg/L
Total Alkalinity	180	0-1000
Total Hardness	425 mg/L	0-500 mg/L
Carbonates	0 mg/L	0-100 mg/L
Sulfates	<200 mg/L	0-1500 mg/L
Potassium	0 mg/L	0-3000 mg/L
Iron	0 mg/L	0-300 mg/L

### Circulation

Lost Circulation Experienced	Losses into Spacer	Losses into Cement	Losses into Displacement
No			

### Job Execution Information

Fluid	Product	Function	Density (lb/gal)	Yield (ft <sup>3</sup> /sk)	Water Rq. (gal/sk)	Water Rq. (gal/bbl)	Volume (sks)	Volume (bbl)	Designed Top (ft)
1	Water	Flush	8.34			42.00		10.00	4033
2	Mud Flush	Flush	8.45			40.86		20.00	4151
3	Water	Flush	8.34			42.00		10.00	4387
4	Primary Cement	Primary	14.20	1.72	8.08		1409.00	432.19	4505
5	Displacement	DisplacementFinal	8.34			42.00		149.00	0

### Job Fluid Details

Fluid	Type	Fluid	Product	Function	Conc.	Uom
2	Flush	Mud Flush	SAPP	Surfactant	10.00	lb/bbl
2	Flush	Mud Flush	SS-201	Surfactant	0.50	gal/bbl
4	Primary	Primary Cement	CLASS G	Cement	80.00	%
4	Primary	Primary Cement	FLY ASH (POZZOLAN)	Extender	20.00	%
4	Primary	Primary Cement	FL-66	FluidLoss	0.40	%BWOB
4	Primary	Primary Cement	FP-24	Defoamer	0.30	%BWOB
4	Primary	Primary Cement	GW-86	Viscosifier	0.10	%BWOB
4	Primary	Primary Cement	IntegraSeal POLI	LostCirculation	0.25	lb/sk
4	Primary	Primary Cement	R-3	Retarder	0.30	%BWOB
4	Primary	Primary Cement	S-8	StrengthRetgression	27.00	%BWOB

## Job Logs

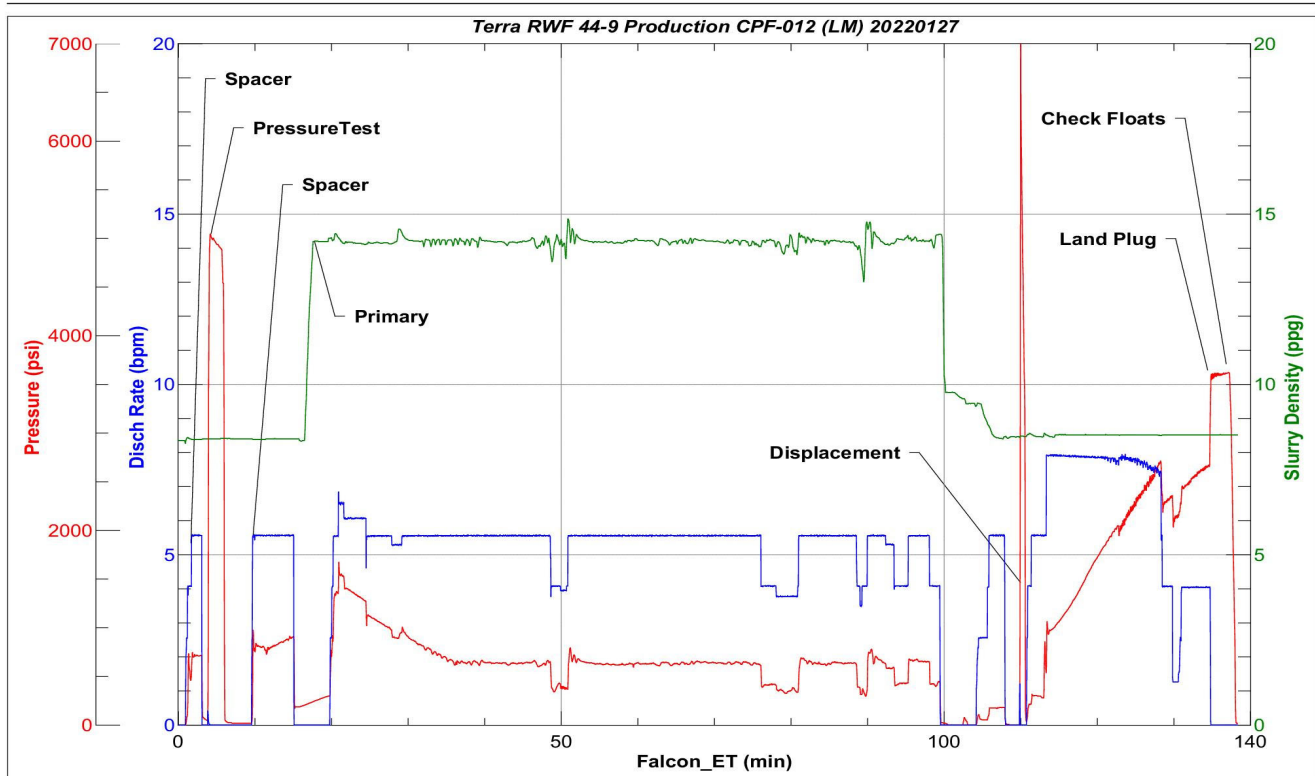
Line	Event	Date (MM/DD/YY)	Time (HH:MM)	Density (lb/gal)	Pump Rate (bpm)	Pump Volume (bbls)	Pipe Pressure (psi)	Comment
1	Callout	1/27/2022	14:00					Yard call 18:30 on location 19:30.
2	Depart For Location	1/27/2022	18:50					Leave Rifle yard for location
3	Arrive On Location	1/27/2022	19:20					Arrive on location rig running casing
4	Spot Equipment	1/27/2022	20:15					Spot in all Equipment
5	Rig Up Iron	1/27/2022	20:40					Pre rig up safety meeting, rig in all equipment and lines to stand pipes
6	Safety Meeting	1/27/2022	22:45					Pre job safety meeting with company man and rig crew
7	End Circulation	1/27/2022	23:00					Rig ended circulation, Circulated for 1 Hour, total of 640 BBLS
8	Rig Up Iron	1/27/2022	23:15					Rig up Cement head and lines on the floor
9	Pump Spacer	1/27/2022	23:29	8.34	5.5	10	746	Pumping fresh water spacer to load lines, returns
10	Pressure Test Lines	1/27/2022	23:31				5000	Pressure test
11	Pump Spacer	1/27/2022	23:37	8.34	5.5	20	772	Pumping mud flush spacer
12	Pump Spacer	1/27/2022	23:40	8.34	5.5	10	854	Pumping fresh water spacer, returns
13	Pump Primary Cement	1/27/2022	23:47	14.2	5.5	0	1310	Pumping primary cement
14	Pump Primary Cement	1/27/2022	23:56	14.2	5.5	50	892	Pumping primary cement
15	Pump Primary Cement	1/28/2022	00:05	14.2	5.5	100	625	Pumping primary cement
16	Pump Primary Cement	1/28/2022	00:13	14.2	4	150	399	Pumping primary cement
17	Pump Primary Cement	1/28/2022	00:23	14.2	5.5	200	621	Pumping primary cement
18	Pump Primary Cement	1/28/2022	00:32	14.2	5.5	250	630	Pumping primary cement
19	Pump Primary Cement	1/28/2022	00:42	14.2	5.5	300	648	Pumping primary cement
20	Pump Primary Cement	1/28/2022	00:52	14.2	5.5	350	646	Pumping primary cement
21	Pump Primary Cement	1/28/2022	01:02	14.2	5.5	400	670	Pumping primary cement
22	Pump Primary Cement	1/28/2022	01:07	14.2	4	432	411	Pumping primary cement
23	Clean Pumps and Lines	1/28/2022	01:09					Clean pump and lines to pit
24	Drop Top Plug	1/28/2022	01:16					Drop top plug verified by company man
25	Pump Displacement	1/28/2022	01:17		4	0	1170	Pumping KCL displacement, returns
26	Pump Displacement	1/28/2022	01:25		8	50	1534	Pumping KCL displacement
27	Pump Displacement	1/28/2022	01:32		8	100	2302	Pumping KCL displacement
28	Pump Displacement	1/28/2022	01:42		4	148	2660	Pumping KCL displacement
29	Land Plug	1/28/2022	01:42				3610	Land plug. FCP 2660 PSI bumped to 3610 PSI
30	Check Floats	1/28/2022	01:43					Bled pressure, floats held. 2 BBL bled back.

Line	Event	Date (MM/DD/YY)	Time (HH:MM)	Density (lb/gal)	Pump Rate (bpm)	Pump Volume (bbls)	Pipe Pressure (psi)	Comment
31	Rig Down Iron	1/28/2022	01:55					Pre rig down safety meeting, rig down cement head and lines on the floor.
32	Depart Location	1/28/2022	03:00					Leave location for Rifle shop

## Pump Diagrams



JobMaster Program Version 5.01C1  
Job Number: 80006  
Customer: Terra  
Well Name: RWF 44-9



BJ Services

Job Start: Thursday, January 27, 2022