



Terra Energy Partners, LLC

SURFACE POST JOB REPORT

FEDERAL RWF 343-9 05-045-24391
S:9 T:6S R:94W Garfield CO

CallSheet #: 79765
Proposal #: 57112



SURFACE Post Job Report

Attention: Dustin Childers | (936) 524-8828 | dchilders@terraep.com
Terra Energy Partners, LLC
4828 Loop Central Dr., Suite 900 | Houston, TX 77081

Dear Dustin Childers,

Thank you for the opportunity to provide cementing services on this well. American Cementing strives to achieve complete customer satisfaction. If you have any questions regarding the services or data provided, please contact American Cementing at any time.

Sincerely,

Zen Keith

District Manager | (720) 934-5850 | zen.keith@americancementing.com

Field Office 28730 US-6, Rifle, CO 81650
Phone: (970) 657-1157

Job Details & Summary

Geometry

Type	Function	OD (in)	ID (in)	Weight (lb/ft)	Thread	Top (ft)	Bottom (ft)	Excess (%)
Open Hole	Outer	n/a	13.5	n/a	n/a	0	500	16
Open Hole	Outer	n/a	13.5	n/a	n/a	500	1100	16
Casing	Inner	9.625	8.921	36	n/a	0	1100	0

Equipment / People

Unit Type	Unit	Power Unit	Employee #1
Cement Trailer Float	CTF-254	TRC(TRB)-195	Chynoweth, Nathan
Light Duty Vehicles	LDV-082		Kelsey, John
Cement Pump Float	CPF-058	TRH-855	McNeal, Lawrence

Timing

Event	Date/Time
Call Out	1/8/2022 06:00
Depart Facility	1/8/2022 10:00
On Location	1/8/2022 11:00
Rig Up Iron	1/8/2022 14:15
Job Started	1/8/2022 15:40
Job Completed	1/8/2022 16:40
Rig Down Iron	1/8/2022 16:50
Depart Location	1/8/2022 17:45

General Job Information

Metrics	Value
Well Fluid Density	8.34 lb/gal
Well Fluid Type	Water
Rig Circulation Vol	100 bbls
Rig Circulation Time	1 hours
Calculated Displacement	83 bbls
Actual Displacement	83 bbls
Total Spacer to Surface	20 bbls
Total CMT to Surface	20 bbls
Well Topped Out	n/a

Job Details

Metrics	Value
Flare Prior to Job	No
Flare Prior to Job	0 units
Flare During Job	No
Flare During Job	0 units
Flare at End of Job	No
Flare at End of Job	0 units
Well Full Prior to Job	Yes
Well Fluid Density Into Well	8.34 lb/gal
Well Fluid Density Out of Well	8.5 lb/gal

Job Details (cont.)

Metrics	Value
BHCT	80 °F
BHST	97 °F

Water Analysis

Metrics	Value	Recommended
Water Source	None	
Temperature	50 °F	50-80 °F
pH Level	5	5.5-8.5
Chlorides	0 mg/L	0-3000 mg/L
Total Alkalinity	0	0-1000
Total Hardness	>450 mg/L	0-500 mg/L
Carbonates	0 mg/L	0-100 mg/L
Sulfates	<200 mg/L	0-1500 mg/L
Potassium	0 mg/L	0-3000 mg/L
Iron	0 mg/L	0-300 mg/L

Circulation

Lost Circulation Experienced
No

Job Execution Information

Fluid	Product	Function	Density (lb/gal)	Yield (ft ³ /sk)	Water Rq. (gal/sk)	Water Rq. (gal/bbl)	Volume (sks)	Volume (bbl)	Designed Top (ft)
1	Water	Flush	8.34			42.00		20.00	0
2	Lead Cement	Lead	12.30	2.34	13.42		122.00	50.81	0
3	Tail Cement	Tail	12.80	2.08	11.46		174.00	64.35	500
4	Water	DisplacementFinal	8.34			42.00		82.00	0

Job Fluid Details

Fluid	Type	Fluid	Product	Function	Conc.	Uom
2	Lead	Lead Cement	ASTM TYPE I/II	Cement	100.00	%
2	Lead	Lead Cement	A-10	Accelerator	5.00	%BWOB
2	Lead	Lead Cement	A-2	Accelerator	2.00	lb/sk
2	Lead	Lead Cement	A-7P	Accelerator	2.00	lb/sk
2	Lead	Lead Cement	FP-24	Defoamer	0.30	%BWOB
2	Lead	Lead Cement	IntegraSeal POLI	LostCirculation	0.25	lb/sk
2	Lead	Lead Cement	STATIC FREE	Other	0.01	lb/sk
3	Tail	Tail Cement	ASTM TYPE I/II	Cement	100.00	%
3	Tail	Tail Cement	A-10	Accelerator	5.00	%BWOB
3	Tail	Tail Cement	A-2	Accelerator	2.00	lb/sk
3	Tail	Tail Cement	A-7P	Accelerator	2.00	lb/sk
3	Tail	Tail Cement	FP-24	Defoamer	0.30	%BWOB
3	Tail	Tail Cement	IntegraSeal POLI	LostCirculation	0.25	lb/sk
3	Tail	Tail Cement	STATIC FREE	Other	0.01	lb/sk

Job Logs

Line	Event	Date (MM/DD/YY)	Time (HH:MM)	Density (lb/gal)	Pump Rate (bpm)	Pump Volume (bbls)	Pipe Pressure (psi)	Comment
1	Callout	1/8/2022	06:00					Crew called to prepare for Surface Cement Job. RTS is 13:00
2	Safety Meeting	1/8/2022	09:45					Journey management meeting
3	Depart Yard	1/8/2022	10:00					Crew leaves Rifle, CO yard for location
4	Arrive on Location	1/8/2022	11:00					arrive on location, verify all proper equipment and product is on location
5	Safety Meeting	1/8/2022	14:00					rig up meeting
6	Spot Units	1/8/2022	14:05					spot all equipment for rig up
7	Rig up	1/8/2022	14:15					rig up all equipment
8	Standby	1/8/2022	14:30					crew on standby while rig runs casing
9	Safety Meeting	1/8/2022	15:30					pre job meeting with all crews involved
10	Load Lines	1/8/2022	15:40	8.34	4	3	210	load lines for psi test
11	Pressure Test	1/8/2022	15:43	8.34	5.6	1	3380	psi test pump and lines to cement head
12	Spacer	1/8/2022	15:46	8.34	4.1	20	342	20 bbl fresh flush
13	Lead Cement	1/8/2022	15:49	12.3	6.9	11	222	50.8 BBLS CMT – 12.3 # 2.34 Y 13.4 MW 122 sks 11 bbls away
14	Lead Cement	1/8/2022	15:58	12.3	6.9	40	620	50.8 bbls away
15	Tail Cement	1/8/2022	16:00	12.8	5	10	400	64.3 BBLS CMT – 12.8 # 2.08 Y 11.5 MW 174 sks 10 bbls away
16	Tail Cement	1/8/2022	16:06	12.8	5.7	20	468	30 bbls away
17	Tail Cement	1/8/2022	16:13	12.8	2.6	34	126	64.3 bbls away
18	Washup	1/8/2022	16:14					shutdown, washup pump, drop plug
19	Displacement	1/8/2022	16:15	8.34	4	10	563	send plug begin displacement 10 bbls away
20	Displacement	1/8/2022	16:21	8.34	5	20	557	30 bbls away
21	Displacement	1/8/2022	16:25	8.34	5	30	728	60 bbls away slow rate
22	Land Plug	1/8/2022	16:37	8.34	2	23	298	83 bbls away
23	Check Floats	1/8/2022	16:40					check floats 1 bbl back, floats held
24	Safety Meeting	1/8/2022	16:45					rig down meeting
25	rig down	1/8/2022	16:50					rig down equipment
26	Safety Meeting	1/8/2022	17:30					Journey management meeting
27	Depart location	1/8/2022	17:45					crew departs location
28		1/8/2022	00:00					Estimated 20 bbls spacer and 20 bbls cement to surface

Pump Diagrams

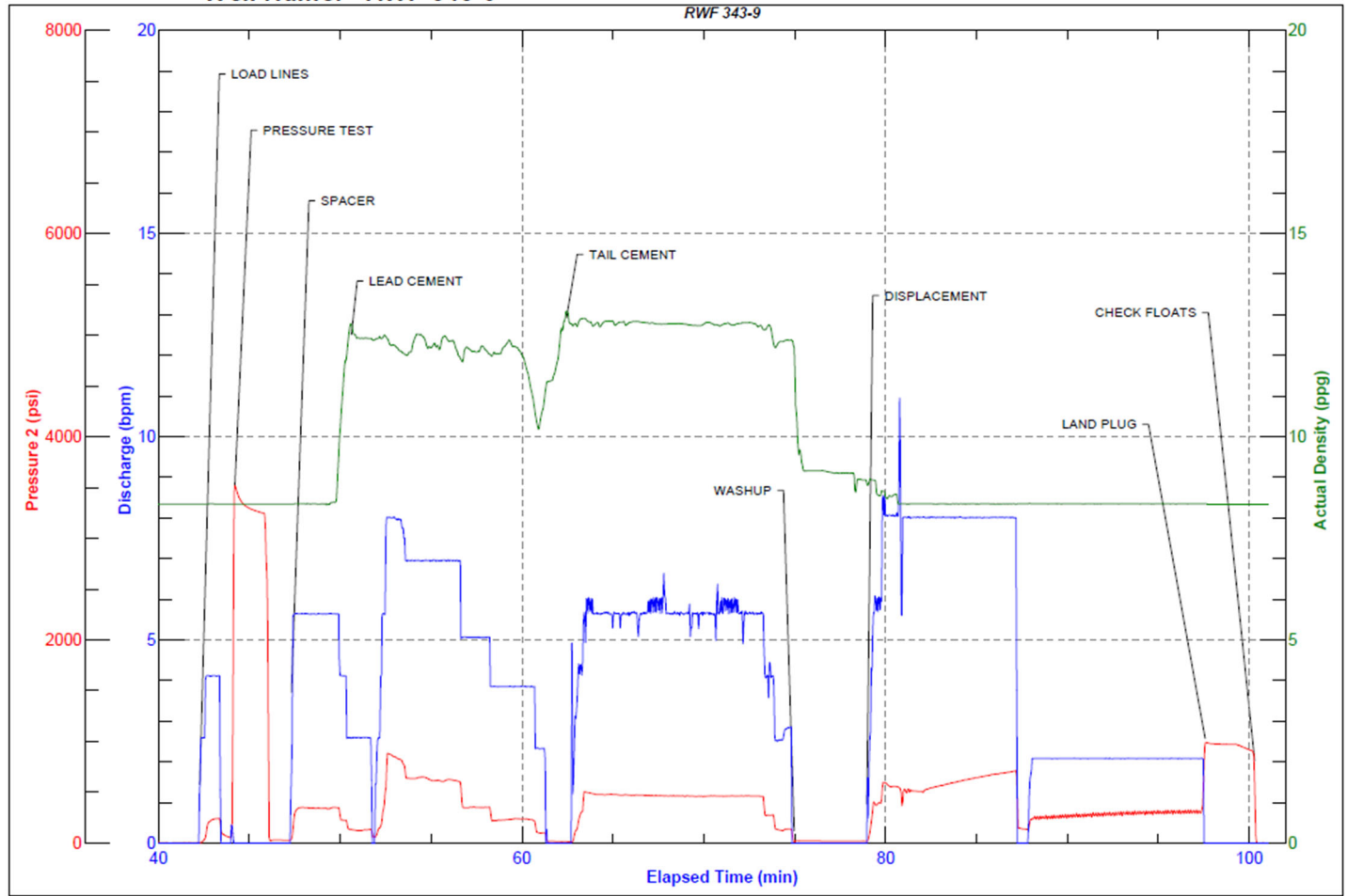


JobMaster Program Version 5.01C1

Job Number: 79765

Customer: Terra

Well Name: RWF 343-9



BJ Services

Job Start: Saturday, January 08, 2022