



Terra Energy Partners, LLC

SURFACE POST JOB REPORT

FEDERAL RWF 444-9 05-045-24395
S:9 T:6S R:94W Garfield CO

CallSheet #: 79600
Proposal #: 56945



SURFACE Post Job Report

Attention: Dustin Childers | (936) 524-8828 | dchilders@terraep.com
Terra Energy Partners, LLC
4828 Loop Central Dr., Suite 900 | Houston, TX 77081

Dear Dustin Childers,

Thank you for the opportunity to provide cementing services on this well. American Cementing strives to achieve complete customer satisfaction. If you have any questions regarding the services or data provided, please contact American Cementing at any time.

Sincerely,

Michael Harold

Field Engineer II | (970) 773-3636 | michael.harold@americacementing.com

Field Office 28730 US-6, Rifle, CO 81650
Phone: (970) 657-1157

Job Details & Summary

Geometry

Type	Function	OD (in)	ID (in)	Weight (lb/ft)	Thread	Top (ft)	Bottom (ft)	Excess (%)
Open Hole	Outer	n/a	13.5	n/a	n/a	0	500	16
Open Hole	Outer	n/a	13.5	n/a	n/a	500	1124	16
Casing	Inner	9.625	8.921	36	n/a	0	1124	0

Equipment / People

Unit Type	Unit	Power Unit	Employee #1
Cement Trailer	CTF-249	TRC(TRB)-425	Chynoweti
Cement Pump	CPF-052	TRH-957	Hale, Jason
Light Duty Vehicles	LDV-5429		Gaston, Roger

Timing

Event	Date/Time
Call Out	12/24/2021 00:00
Depart Facility	12/24/2021 18:45
On Location	12/24/2021 22:50
Rig Up Iron	12/24/2021 23:00
Job Started	12/24/2021 23:47
Job Completed	12/25/2021 00:57
Rig Down Iron	12/25/2021 01:15
Depart Location	12/25/2021 02:00

General Job Information

Metrics	Value
Well Fluid Density	9.9 lb/gal
Well Fluid Type	WBM
Rig Circulation Vol	900 bbls
Rig Circulation Time	17 hours
Calculated Displacement	83 bbls
Actual Displacement	83 bbls
Total Spacer to Surface	20 bbls
Total CMT to Surface	15 bbls
Well Topped Out	No

Job Details

Metrics	Value
Flare Prior to Job	No
Flare Prior to Job	0 units
Flare During Job	No
Flare During Job	0 units
Flare at End of Job	No
Flare at End of Job	0 units
Well Full Prior to Job	Yes
Well Fluid Density Into Well	9.9 lb/gal
Well Fluid Density Out of Well	9.9 lb/gal

Job Details (cont.)

Metrics	Value
BHCT	80 °F
BHST	97 °F

Water Analysis

Metrics	Value	Recommended
Water Source	Upright Rig Tank	
Temperature	64 °F	50-80 °F
pH Level	7	5.5-8.5
Chlorides	0 mg/L	0-3000 mg/L
Total Alkalinity	200	0-1000
Total Hardness	125 mg/L	0-500 mg/L
Carbonates	140 mg/L	0-100 mg/L
Sulfates	220 mg/L	0-1500 mg/L
Potassium	0 mg/L	0-3000 mg/L
Iron	0 mg/L	0-300 mg/L

Circulation

Lost Circulation Experienced	Losses into Spacer	Losses into Cement	Losses into Displacement
No			

Job Execution Information

Fluid	Product	Function	Density (lb/gal)	Yield (ft ³ /sk)	Water Rq. (gal/sk)	Water Rq. (gal/bbl)	Volume (sks)	Volume (bbl)	Designed Top (ft)
1	Water	Flush	8.34			42.00		20.00	0
2	Lead Cement	Lead	12.30	2.34	13.42		122.00	50.82	0
3	Tail Cement	Tail	12.80	2.08	11.46		174.00	64.35	500
4	Water	DisplacementFinal	8.34			42.00		82.00	0

Job Fluid Details

Fluid	Type	Fluid	Product	Function	Conc.	Uom
2	Lead	Lead Cement	ASTM TYPE III	Cement	100.00	%
2	Lead	Lead Cement	A-10	Accelerator	5.00	%BWOB
2	Lead	Lead Cement	A-2	Accelerator	2.00	lb/sk
2	Lead	Lead Cement	A-7P	Accelerator	2.00	lb/sk
2	Lead	Lead Cement	FP-24	Defoamer	0.30	%BWOB
2	Lead	Lead Cement	IntegraSeal POLI	LostCirculation	0.25	lb/sk
3	Tail	Tail Cement	ASTM TYPE III	Cement	100.00	%
3	Tail	Tail Cement	A-10	Accelerator	5.00	%BWOB
3	Tail	Tail Cement	A-2	Accelerator	2.00	lb/sk
3	Tail	Tail Cement	A-7P	Accelerator	2.00	lb/sk
3	Tail	Tail Cement	FP-24	Defoamer	0.30	%BWOB
3	Tail	Tail Cement	IntegraSeal POLI	LostCirculation	0.25	lb/sk

Job Logs

Line	Event	Date (MM/DD/YY)	Time (HH:MM)	Density (lb/gal)	Pump Rate (bpm)	Pump Volume (bbls)	Pipe Pressure (psi)	Comment
1	Arrive On Location	12/24/2021	22:50					ARRIVE ON LOCATION
2	Rig Up Iron	12/24/2021	23:00					RIG UP TO WELL
3	Safety Meeting	12/24/2021	23:30					SAFETY MEETING WITH RIG CREW
4	Fill Lines	12/24/2021	23:47	8.34	3	5	70	FILL LINES WITH H2O 5BBL
5	Pressure Test Lines	12/24/2021	23:51				3000	PRESSURE TEST 3K
6	FLUSH WATER	12/24/2021	23:53	8.34	5	20	350	PUMP SPACER FLUSH WATER
7	LEAD CMT	12/25/2021	00:03	12.3	4	10	370	PUMP LEAD CMT
8	LEAD CMT	12/25/2021	00:09	12.3	4	25	200	PUMP LEAD CMT
9	LEAD CMT	12/25/2021	00:22	12.3	4	75	280	PUMP LEAD CMT
10	TAIL CMT	12/25/2021	00:23	12.8	5.5	10	318	PUMP TAIL CMT
11	TAIL CMT	12/25/2021	00:28	12.8	5.5	25	317	PUMP TAIL CMT
12	TAIL CMT	12/25/2021	00:31	12.8	5.5	50	345	PUMP TAIL CMT
13	TAIL CMT	12/25/2021	00:36	12.8	5.5	64.35	350	PUMP TAIL CMT
14	DROP PLUG	12/25/2021	00:37					DROP PLUG
15	DISPLACEMENT	12/25/2021	00:40	8.34	8	10	380	PUMP DISPLACEMENT
16	DISPLACEMENT	12/25/2021	00:45	8.34	8	20	459	PUMP DISPLACEMENT
17	DISPLACEMENT	12/25/2021	00:48	8.34	8	50	500	PUMP DISPLACEMENT
18	DISPLACEMENT	12/25/2021	00:50	8.34	8	70	700	PUMP DISPLACEMENT
19	DISPLACEMENT	12/25/2021	00:52	8.34	4	80	960	PUMP DISPLACEMENT
20	DISPLACEMENT	12/25/2021	00:53	8.34	4	84	1050	BUMP PLUG
21	Check Floats	12/25/2021	00:57					.5BBL BACK FLOATS HELD
22	Rig Down Iron	12/25/2021	01:15					RIG DOWN
23	Depart Location	12/25/2021	02:00					DEPART LOCATION

Pump Diagrams

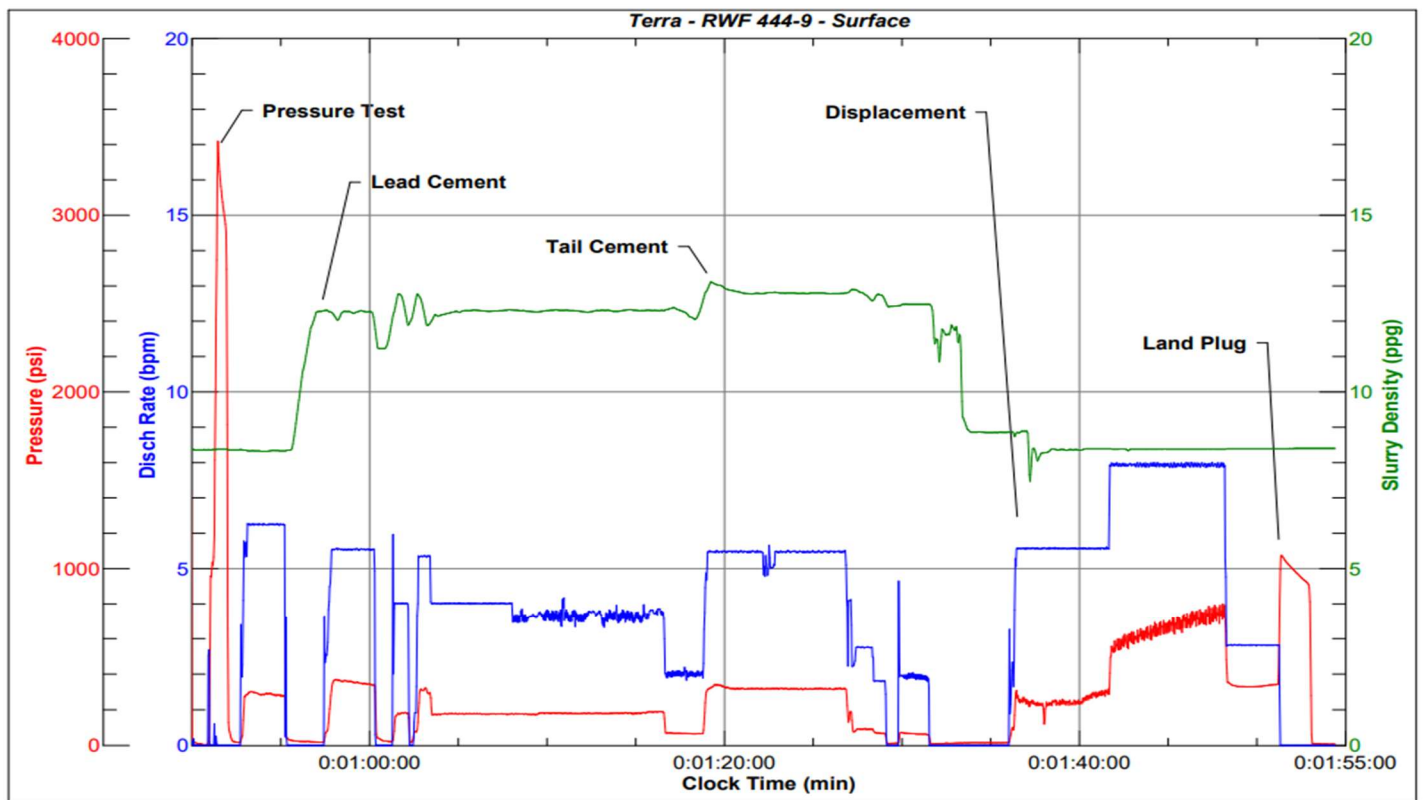


JobMaster Program Version 5.01C1

Job Number: 79600

Customer: Terra

Well Name: RWF 444-9



BJ Services

Job Start: Friday, December 24, 2021