



Terra Energy Partners, LLC

SURFACE POST JOB REPORT

FEDERAL RWF 331-9 05-045-24402
S:9 T:6S R:94W Garfield CO

CallSheet #: 79376
Proposal #: 56329



SURFACE Post Job Report

Attention: Dustin Childers | (936) 524-8828 | dchilders@terraep.com
Terra Energy Partners, LLC
4828 Loop Central Dr., Suite 900 | Houston, TX 77081

Dear Dustin Childers,

Thank you for the opportunity to provide cementing services on this well. American Cementing strives to achieve complete customer satisfaction. If you have any questions regarding the services or data provided, please contact American Cementing at any time.

Sincerely,

Michael Harold

Field Engineer II | (970) 773-3636 | michael.harold@americacementing.com

Field Office 28730 US-6, Rifle, CO 81650
Phone: (970) 657-1157

Job Details & Summary

Geometry

Type	Function	OD (in)	ID (in)	Weight (lb/ft)	Thread	Top (ft)	Bottom (ft)	Excess (%)
Open Hole	Outer	n/a	13.5	n/a	n/a	0	500	16
Open Hole	Outer	n/a	13.5	n/a	n/a	500	1119	16
Casing	Inner	9.625	8.921	36	n/a	0	1119	0

Equipment / People

Unit Type	Unit	Power Unit	Employee #1
Cement Trailer	CTF-273	TRC(TRB)-059	
Cement Pump	CPF-012	TRH-1137	Gonzales, Ivan
Light Duty Vehicles	LDV-5429		Gaston, Roger

Timing

Event	Date/Time
Call Out	12/5/2021 15:00
Depart Facility	12/5/2021 15:30
On Location	12/6/2021 01:00
Rig Up Iron	12/6/2021 01:30
Job Started	12/6/2021 04:47
Job Completed	12/6/2021 05:36
Rig Down Iron	12/6/2021 05:38
Depart Location	12/6/2021 07:00

General Job Information

Metrics	Value
Well Fluid Density	8.8 lb/gal
Well Fluid Type	WBM
Rig Circulation Vol	100 bbls
Rig Circulation Time	0.5 hours
Calculated Displacement	84.7 bbls
Actual Displacement	84.7 bbls
Total Spacer to Surface	20 bbls
Total CMT to Surface	14 bbls
Well Topped Out	No
Top Out Volume	N/A bbls

Job Details

Metrics	Value
Flare Prior to Job	No
Flare Prior to Job	0 units
Flare During Job	No
Flare During Job	0 units
Flare at End of Job	No
Flare at End of Job	0 units
Well Full Prior to Job	Yes
Well Fluid Density Into Well	8.8 lb/gal
Well Fluid Density Out of Well	8.8 lb/gal

Job Details (cont.)

Metrics	Value
BHCT	80 °F
BHST	97 °F

Water Analysis

Metrics	Value	Recommended
Water Source	Upright Rig Tank	
Temperature	63 °F	50-80 °F
pH Level	7	5.5-8.5
Chlorides	0 mg/L	0-3000 mg/L
Total Alkalinity	220	0-1000
Total Hardness	180 mg/L	0-500 mg/L
Carbonates	140 mg/L	0-100 mg/L
Sulfates	200 mg/L	0-1500 mg/L
Potassium	0 mg/L	0-3000 mg/L
Iron	0 mg/L	0-300 mg/L

Circulation

Lost Circulation Experienced	Losses into Spacer	Losses into Cement	Losses into Displacement
No			

Job Execution Information

Fluid	Product	Function	Density (lb/gal)	Yield (ft ³ /sk)	Water Rq. (gal/sk)	Water Rq. (gal/bbl)	Volume (sks)	Volume (bbl)	Designed Top (ft)
1	Water	Flush	8.34			42.00		20.00	0
2	Lead Cement	Lead	12.30	2.34	13.42		122.00	50.82	0
3	Tail Cement	Tail	12.80	2.08	11.46		174.00	64.35	500
4	Water	DisplacementFinal	8.34			42.00		83.70	0

Job Fluid Details

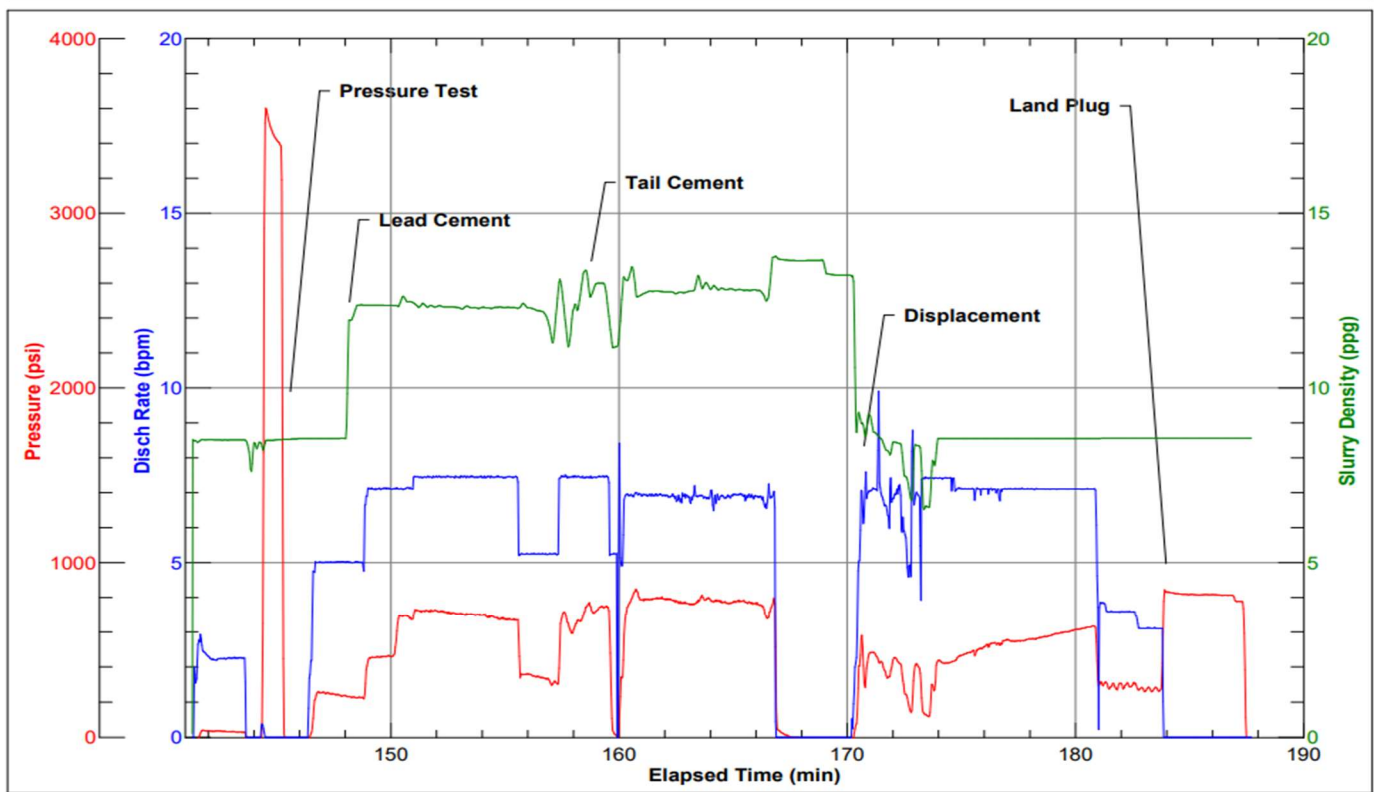
Fluid	Type	Fluid	Product	Function	Conc.	Uom
2	Lead	Lead Cement	ASTM TYPE III	Cement	100.00	%
2	Lead	Lead Cement	A-10	Accelerator	5.00	%BWOB
2	Lead	Lead Cement	A-2	Accelerator	2.00	lb/sk
2	Lead	Lead Cement	A-7P	Accelerator	2.00	lb/sk
2	Lead	Lead Cement	FP-24	Defoamer	0.30	%BWOB
2	Lead	Lead Cement	IntegraSeal POLI	LostCirculation	0.25	lb/sk
3	Tail	Tail Cement	ASTM TYPE III	Cement	100.00	%
3	Tail	Tail Cement	A-10	Accelerator	5.00	%BWOB
3	Tail	Tail Cement	A-2	Accelerator	2.00	lb/sk
3	Tail	Tail Cement	A-7P	Accelerator	2.00	lb/sk
3	Tail	Tail Cement	FP-24	Defoamer	0.30	%BWOB
3	Tail	Tail Cement	IntegraSeal POLI	LostCirculation	0.25	lb/sk

Job Logs

Line	Event	Date (MM/DD/YY)	Time (HH:MM)	Density (lb/gal)	Pump Rate (bpm)	Pump Volume (bbls)	Pipe Pressure (psi)	Comment
1	Callout	12/5/2021	15:00					CALLED CMT SERVICES
2	Arrive On Location	12/6/2021	01:00					ARRIVE ON TERRA
3	Rig Up Iron	12/6/2021	01:30					RIG UP TO WELL
4	Safety Meeting	12/6/2021	04:23					SAFETY MEETING WITH RIG CREW
5	Fill Lines	12/6/2021	04:47	8.34	2	5	35	FILL LINES WITH H2O 5BBL
6	Pressure Test Lines	12/6/2021	04:52				3000	PRESSURE TEST 3K
7	FLUSH WATER	12/6/2021	04:55	8.34	5	10	227	PUMP FLUSH SPACER
8	FLUSH WATER	12/6/2021	04:57	8.34	5	20	200	PUMP FLUSH SPACER
9	LEAD CMT	12/6/2021	04:58	12.3	7	1	455	PUMP LEAD CMT
10	LEAD CMT	12/6/2021	05:01	12.3	7	25	694	PUMP LEAD CMT
11	LEAD CMT	12/6/2021	05:05	12.3	7	50.82	338	PUMP LEAD CMT
12	TAIL CMT	12/6/2021	05:06	12.8	7	1	500	PUMP TAIL CMT
13	TAIL CMT	12/6/2021	05:09	12.8	7	25	508	PUMP TAIL CMT
14	TAIL CMT	12/6/2021	05:13	12.8	7	50	772	PUMP TAIL CMT
15	TAIL CMT	12/6/2021	05:16	12.8	7	64.35	715	PUMP TAIL CMT
16	DROP PLUG	12/6/2021	05:18					DROP PLUG
17	DISPLACEMENT	12/6/2021	05:20	8.34	7.5	10	234	PUMP DISPLACEMENT
18	DISPLACEMENT	12/6/2021	05:26	8.34	7.5	50	560	PUMP DISPLACEMENT
19	DISPLACEMENT	12/6/2021	05:27	8.34	7.5	60	595	PUMP DISPLACEMENT
20	DISPLACEMENT	12/6/2021	05:29	8.34	7.5	70	635	PUMP DISPLACEMENT
21	DISPLACEMENT	12/6/2021	05:30	8.34	4	84.7	700	PUMP DISPLACEMENT
22	FINAL PRESSURE	12/6/2021	05:31			203		FINAL PRESSURE 203
23	Check Floats	12/6/2021	05:36					FLOATS HOLD .5BBL BACK
24	Rig Down Iron	12/6/2021	05:38					
25	Depart Location	12/6/2021	07:00					RIG DOWN IRON

Pump Diagrams

JobMaster Program Version 5.01C1
Job Number: 79326
Customer: TERRA
Well Name: RWA 331-9



BJ Services

Job Start: Monday, December 06, 2021