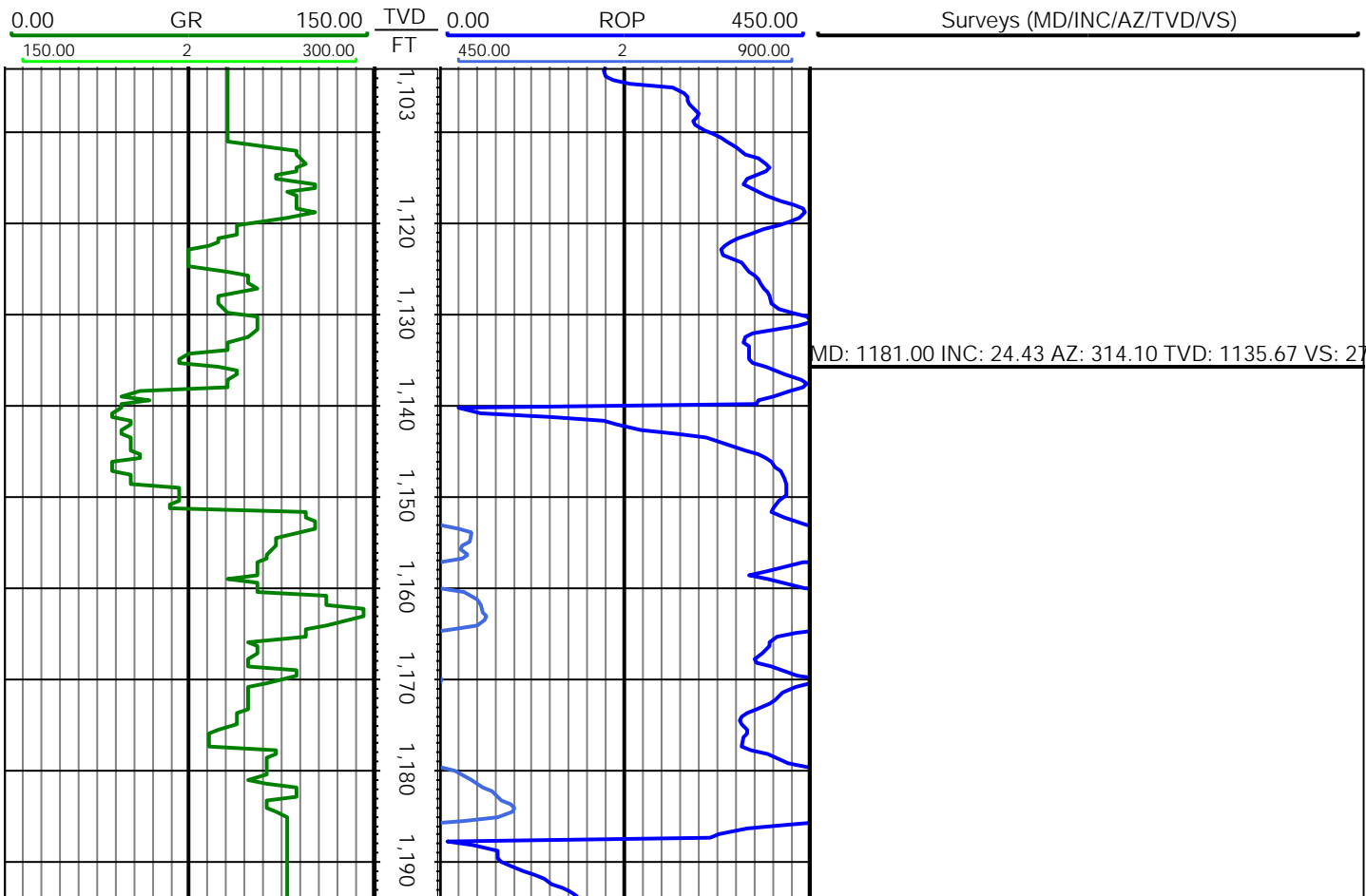
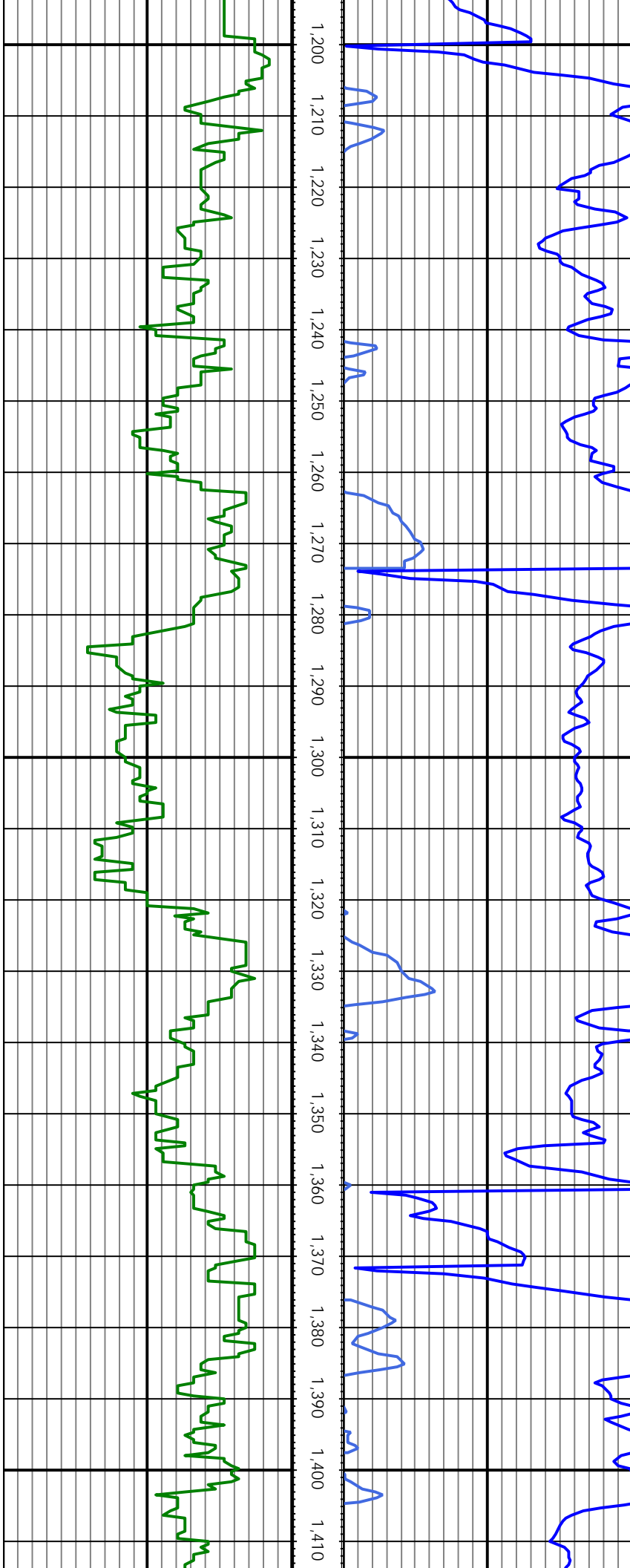


<div><div><div></div><div></div><div></div><div></div><div></div><div></div><div></div><div></div><div></div><div></div></div><div><div>KLX</div><div>Directional Drilling</div></div></div>										5":100'														
KLX Directional					Rulison					USA					RWF 531-9					Terra Energy Partners				
Company : Well: RWF 531-9 Field: Rulison Location: RWF 43-9 Pad Job Number: RM-210815										LOCATION					Other Services:									
										Latitude: 39.539406		Longitude: -107.885356												
OP. COMP.		FIELD		COUNTRY		WELL		SVC COMPANY		API S/N 210134		SEC 9		TWP 6S		RANGE 94W								
Perm. Datum: Elev.: 7861.4										Elev KB: 7891.4														
Log Measured From: Above P.D.										Elev DF: 7861.4														
Depth Ref.: Elev GL: 7861.4																								
Hole Data										Casing Data														
Size		From		To		Size		From		To		Size		From		To								
13.5		0.00		1128.00		9 5/8		0.00		1118.00		4 1/2		0.00		9825.00								
8.75		1128.00		9845.00																				
Deviation Record										Mud Record														
Size		Interval		Inc / Az Start		Inc / Az End		Type		From		To		Size		Interval		Inc / Az Start		Inc / Az End				
								WBM		1128.00		9845.00												

Oper. Company: Terra Energy Partners				State: Colorado			
Well: RWF 531-9				County: Garfield			
Field: Rulison				Country: USA			
Rig: H&P 329				Location: RWF 43-9 Pad B-3			
Well ID: 210134				Start Date: 11/28/21			
Job Number: RM-210815				EndDate: 12-04/21			
Latitude: 39.450022				Elev GL: 7861.4			
Longitude: -107.795904				Elev KB: 7891.4			
Day Hand: Richie Moulton							
Tool Box Date:	Run #1	Run #2	Run #3	Run #4	Run #5	Run #6	Run #7

Tool Run Data	Run #1	Run #2	Run #3	Run #4	Run #5
Tool S/N	D066 / 2937HRN				
Bit Size	8.75				
Cal Factor	3.943				
Survey Offset	57.00				
Gamma Offset	54.00				
Resistivity Offset	93.79				
Start Depth	1128.00				
StartDate	11/29/2021				
StartTime	09:00				
EndDepth	9845.00				
EndDate	9/8/2021				
EndTime	06:00				
Mud Type	WBM				
Mud Weight	11.5				
Funnel Viscosity	56				
Plastic Viscosity	26				
Yield Point	24				
Gel Strength	10				
Solids Content	17				
Sand Content	1.25				
Mud Alkalinity	0.15				
Filtrate Alkalinity	0.05				
Chlorides	1300				
Temperature	122				
Hole Data			Casing Data		
Size	From	To	Size	From	To
13.5	0.00	1128.00	9 5/8	0.00	1118.00
8.75	1128.00	9845.00	4 1/2	0.00	9825.00
All interpretations are opinions based on inferences from electrical or other measurements and we cannot and do not guarantee the accuracy or correctness of any interpretation, and we shall not except in the case of gross or willful negligence on our part, be liable or responsible for any loss, cost damages or expenses incurred or sustained by anyone resulting from an interpretation made by any of our officers, agents, or employees.					

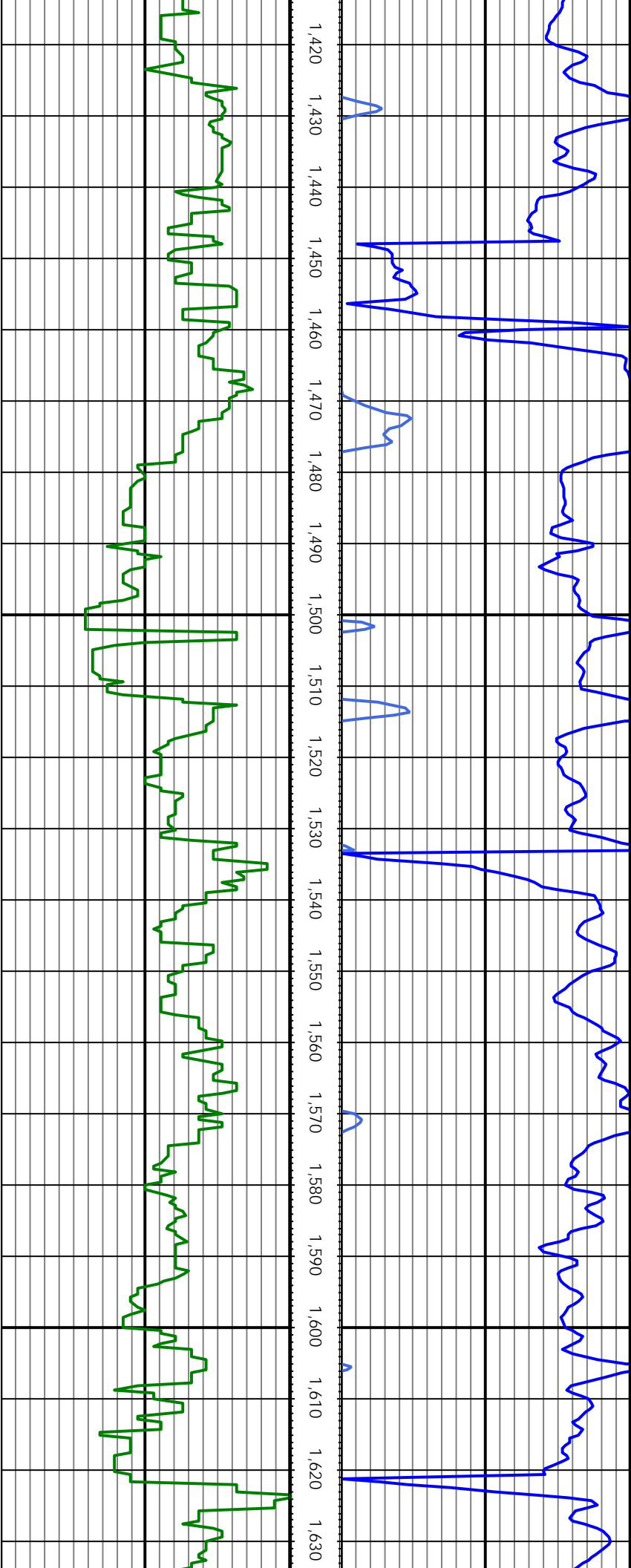




MD: 1274.00 INC: 23.55 AZ: 318.14 TVD: 1220.64 VS: 37

MD: 1369.00 INC: 23.16 AZ: 315.59 TVD: 1307.86 VS: 34

MD: 1463.00 INC: 21.97 AZ: 318.49 TVD: 1394.66 VS: 38



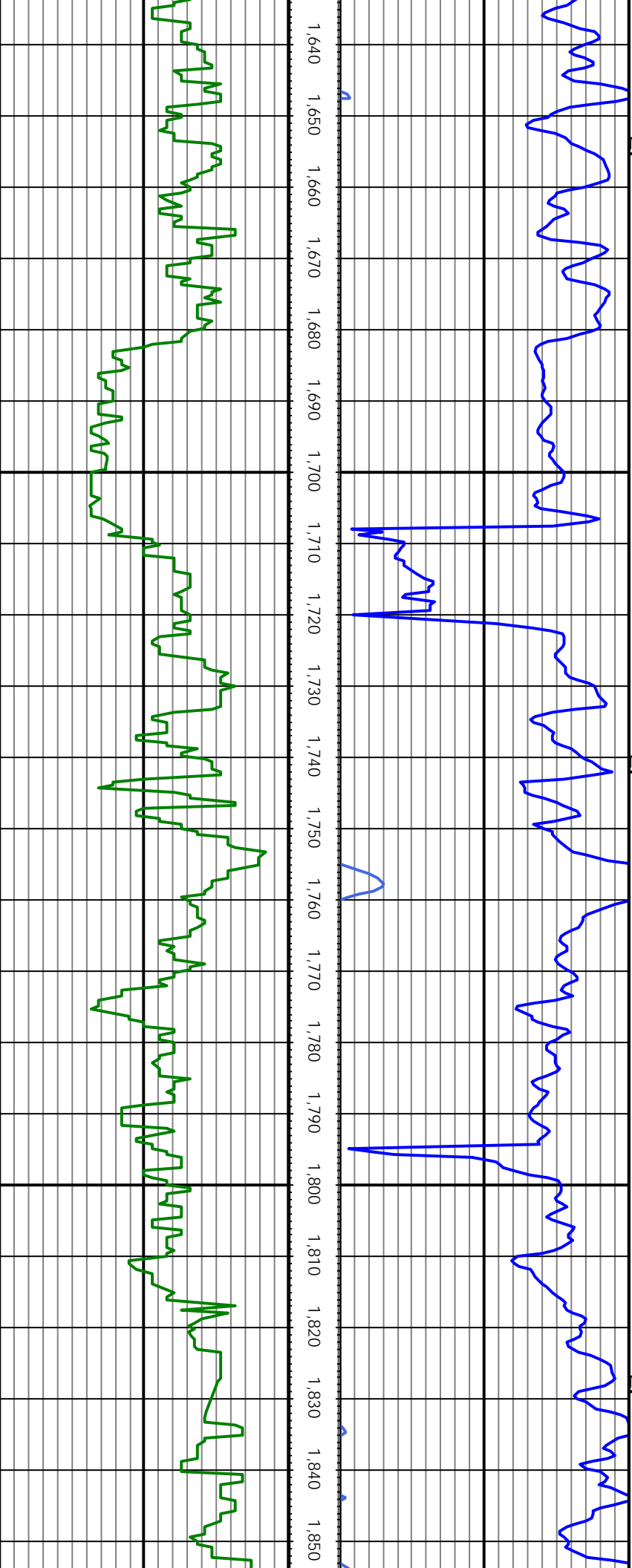
MD: 1557.00 INC: 22.46 AZ: 320.34 TVD: 1481.69 VS: 42

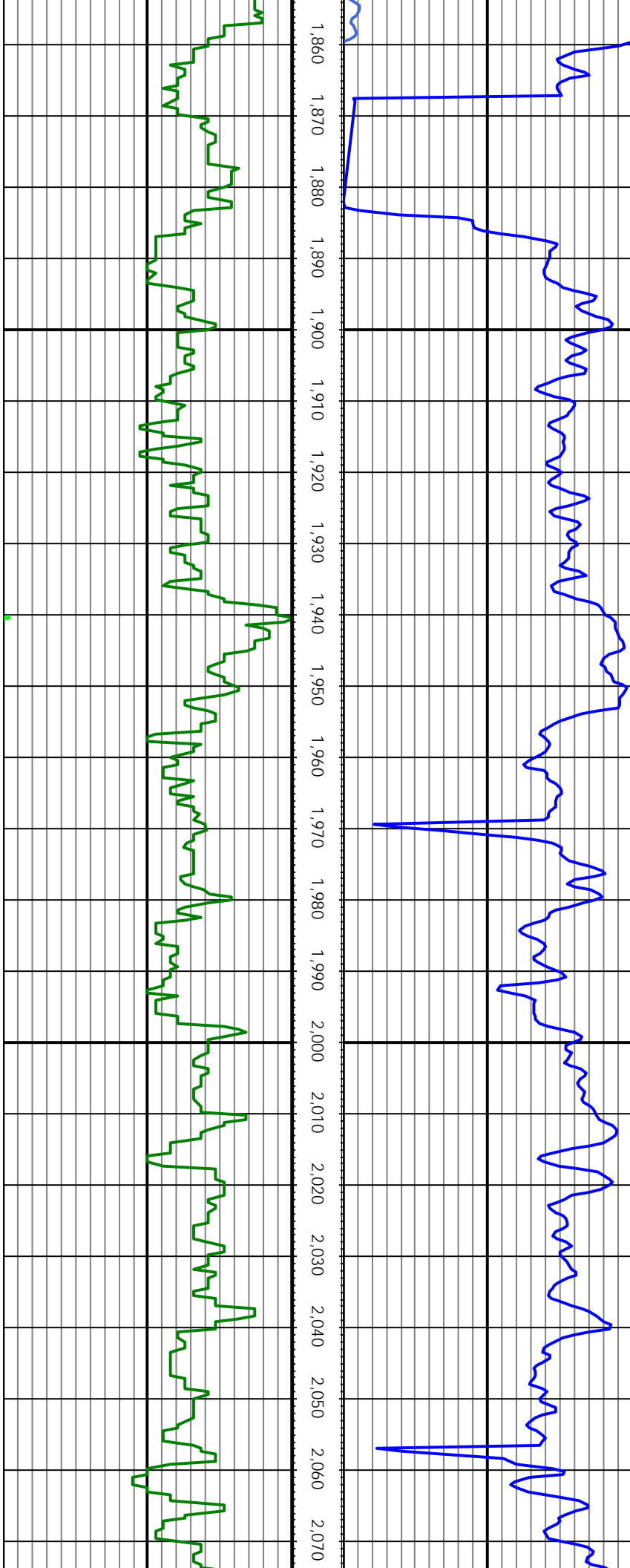
MD: 1651.00 INC: 22.59 AZ: 319.64 TVD: 1568.52 VS: 45

MD: 1745.00 INC: 22.72 AZ: 317.79 TVD: 1655.26 VS: 49

MD: 1839.00 INC: 22.50 AZ: 320.69 TVD: 1742.04 VS: 52

MD: 1933.00 INC: 22.10 AZ: 321.04 TVD: 1829.01 VS: 56





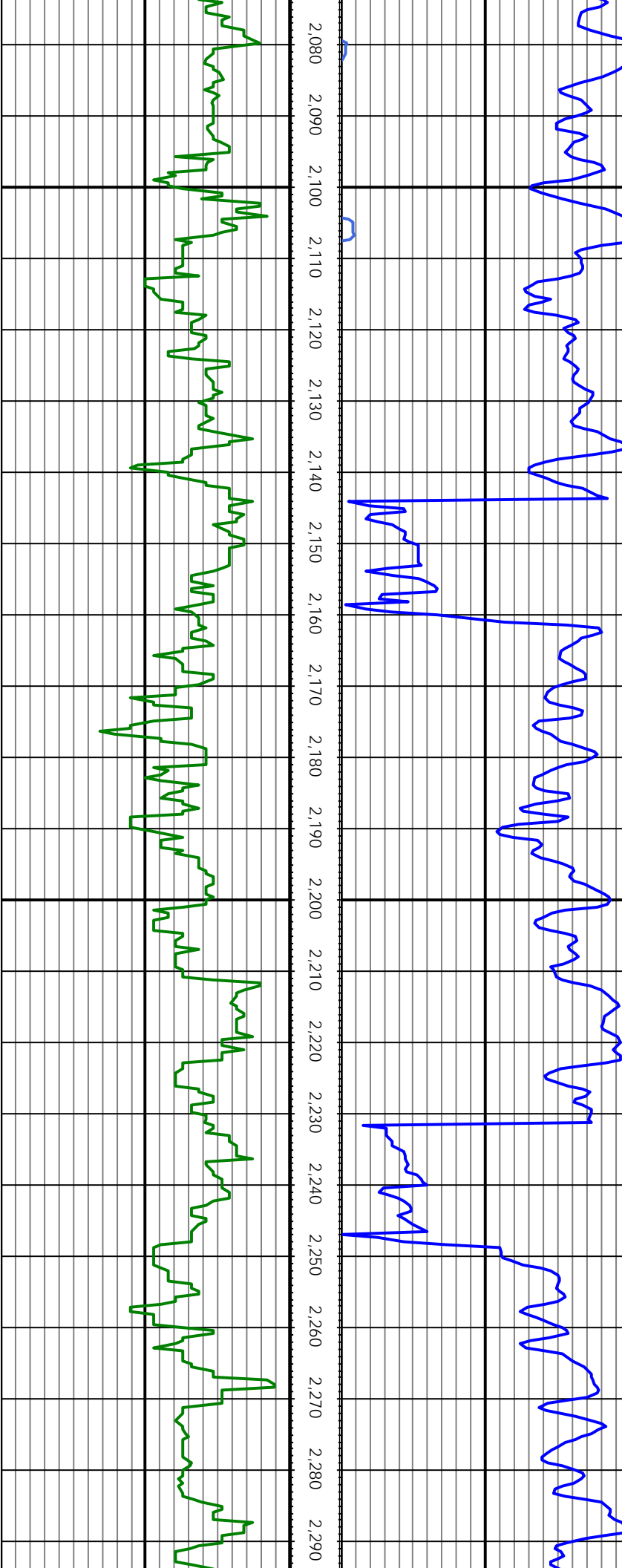
MD: 2027.00 INC: 21.66 AZ: 320.16 TVD: 1916.24 VS: 60

MD: 2121.00 INC: 21.23 AZ: 320.16 TVD: 2003.73 VS: 63

MD: 2215.00 INC: 21.09 AZ: 319.37 TVD: 2091.39 VS: 66

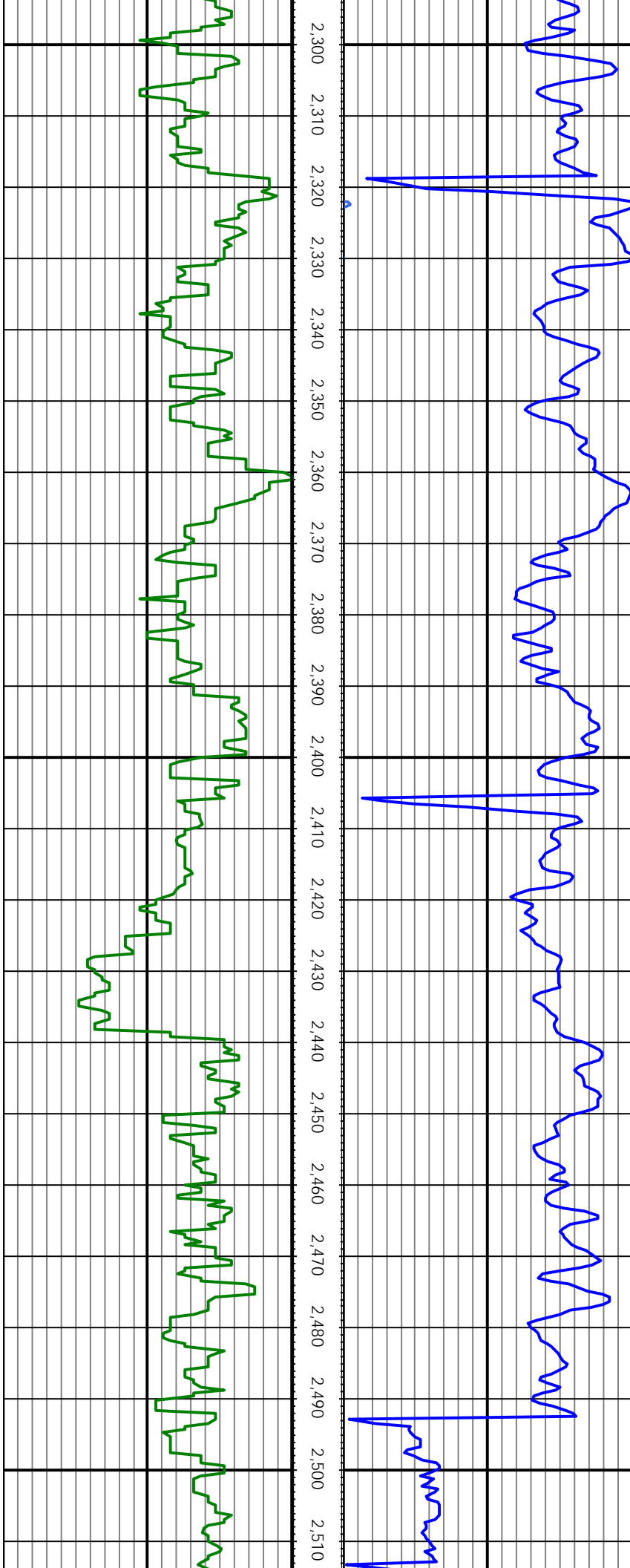
MD: 2309.00 INC: 21.01 AZ: 323.07 TVD: 2179.13 VS: 70

MD: 2403.00 INC: 22.37 AZ: 323.59 TVD: 2266.47 VS: 73



MD: 2497.00 INC: 21.97 AZ: 322.63 TVD: 2353.52 VS: 77

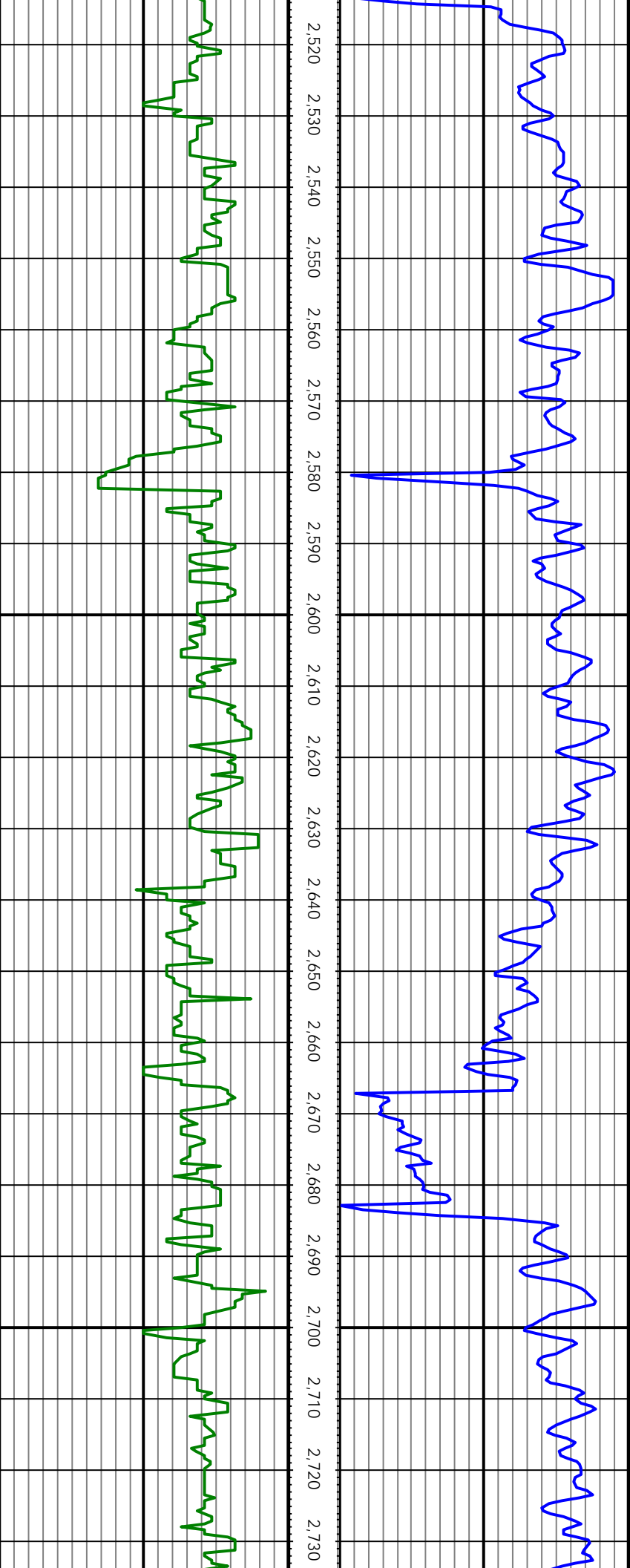
MD: 2592.00 INC: 21.05 AZ: 322.89 TVD: 2441.90 VS: 80



MD: 2686.00 INC: 22.85 AZ: 321.22 TVD: 2529.08 VS: 84

MD: 2780.00 INC: 21.88 AZ: 319.11 TVD: 2616.01 VS: 87

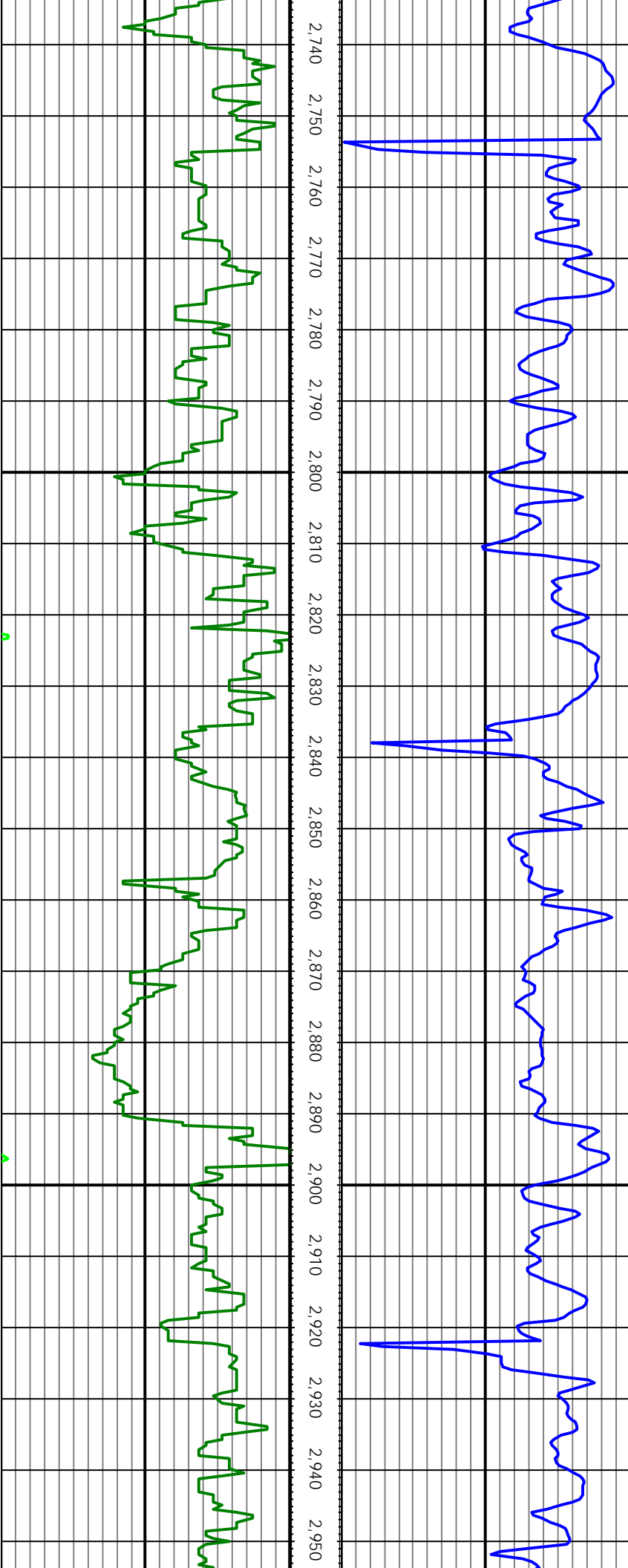
MD: 2874.00 INC: 23.55 AZ: 318.41 TVD: 2702.72 VS: 91



MD: 2966.00 INC: 22.98 AZ: 317.88 TVD: 2787.24 VS: 95

MD: 3057.00 INC: 22.50 AZ: 317.79 TVD: 2871.17 VS: 98

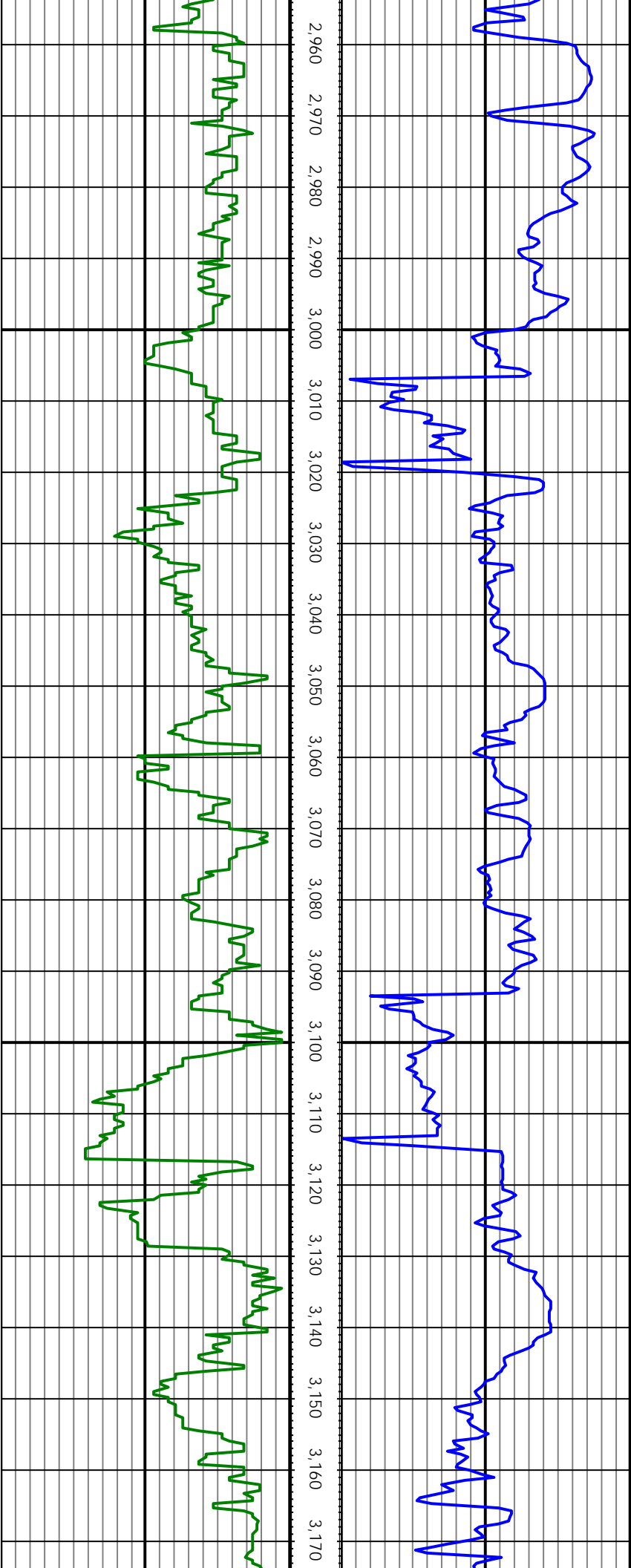
MD: 3148.00 INC: 21.31 AZ: 317.62 TVD: 2955.59 VS: 10



MD: 3148.00 INC: 21.31 AZ: 317.62 TVD: 2955.59 VS: 10

MD: 3240.00 INC: 20.52 AZ: 317.62 TVD: 3041.53 VS: 10

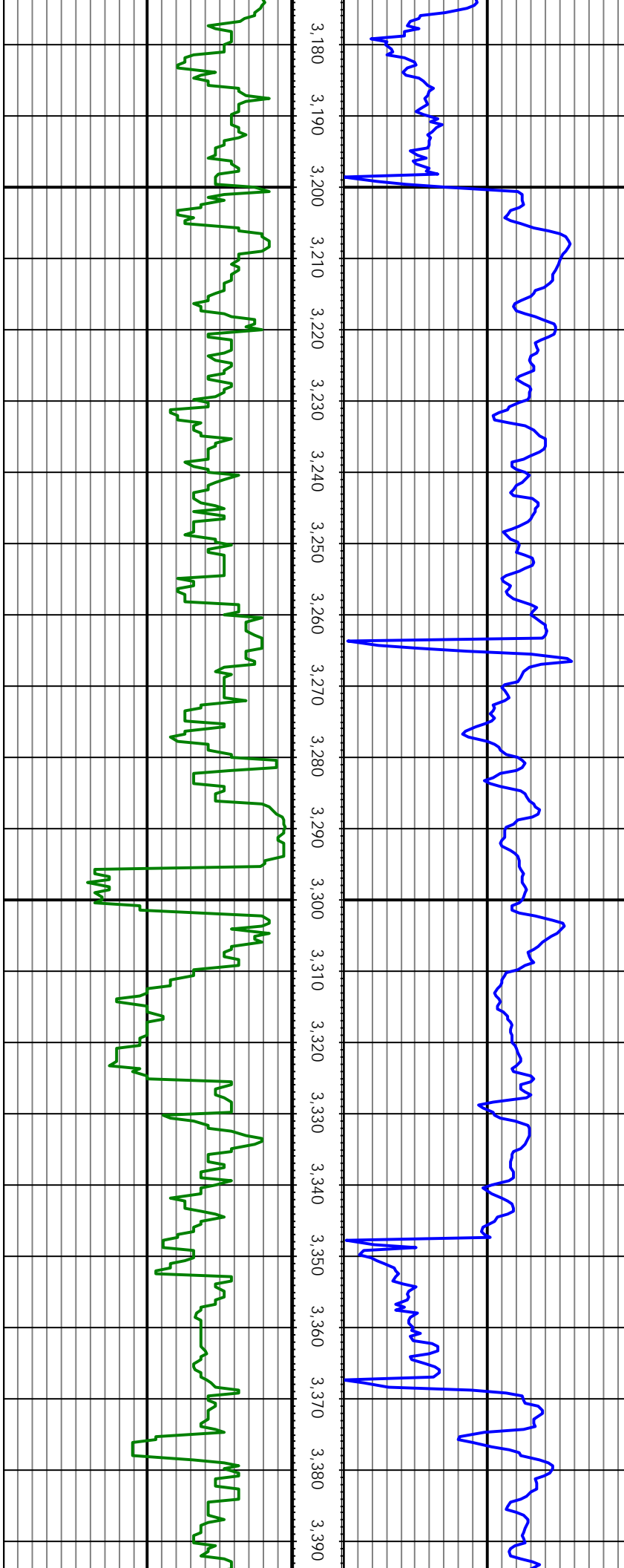
MD: 3330.00 INC: 21.05 AZ: 320.16 TVD: 3125.68 VS: 10



MD: 3422.00 INC: 22.19 AZ: 322.45 TVD: 3211.20 VS: 11

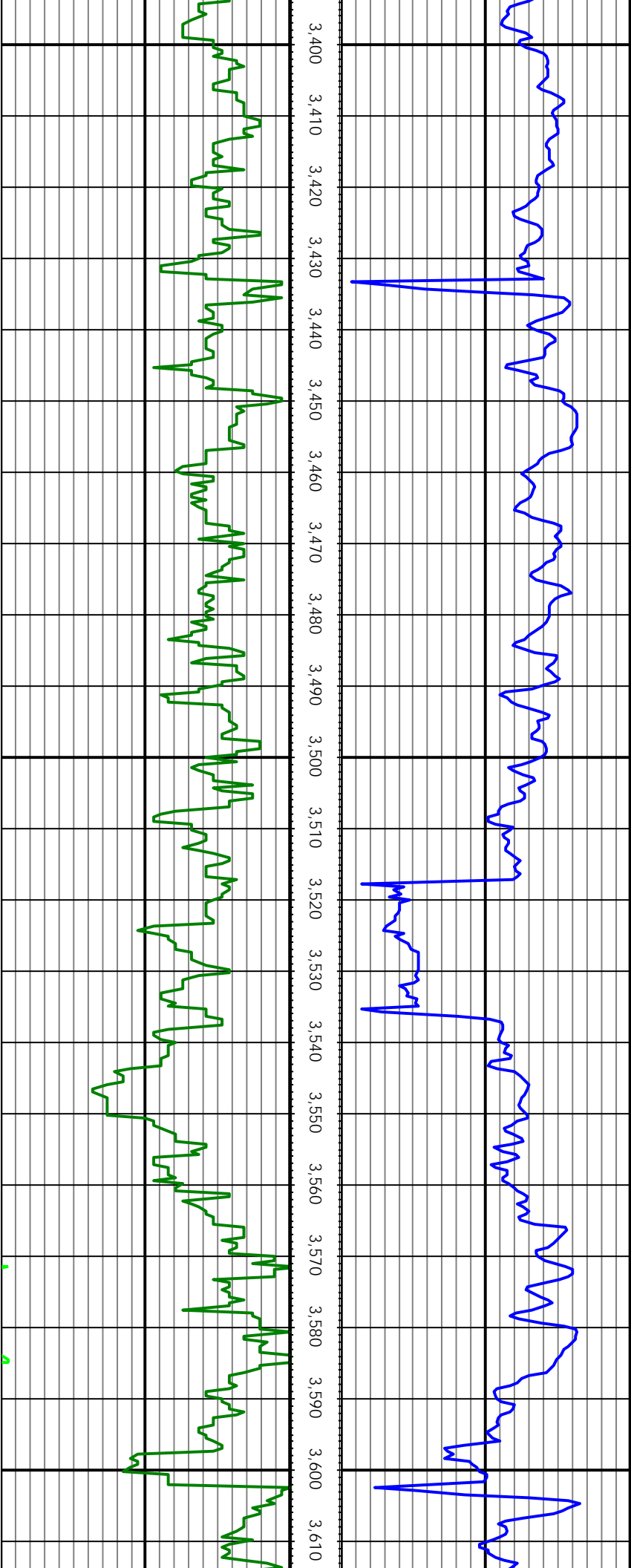
MD: 3513.00 INC: 21.14 AZ: 322.54 TVD: 3295.77 VS: 11

MD: 3603.00 INC: 22.19 AZ: 325.26 TVD: 3379.42 VS: 11



MD: 3694.00 INC: 21.45 AZ: 325.44 TVD: 3463.90 VS: 12

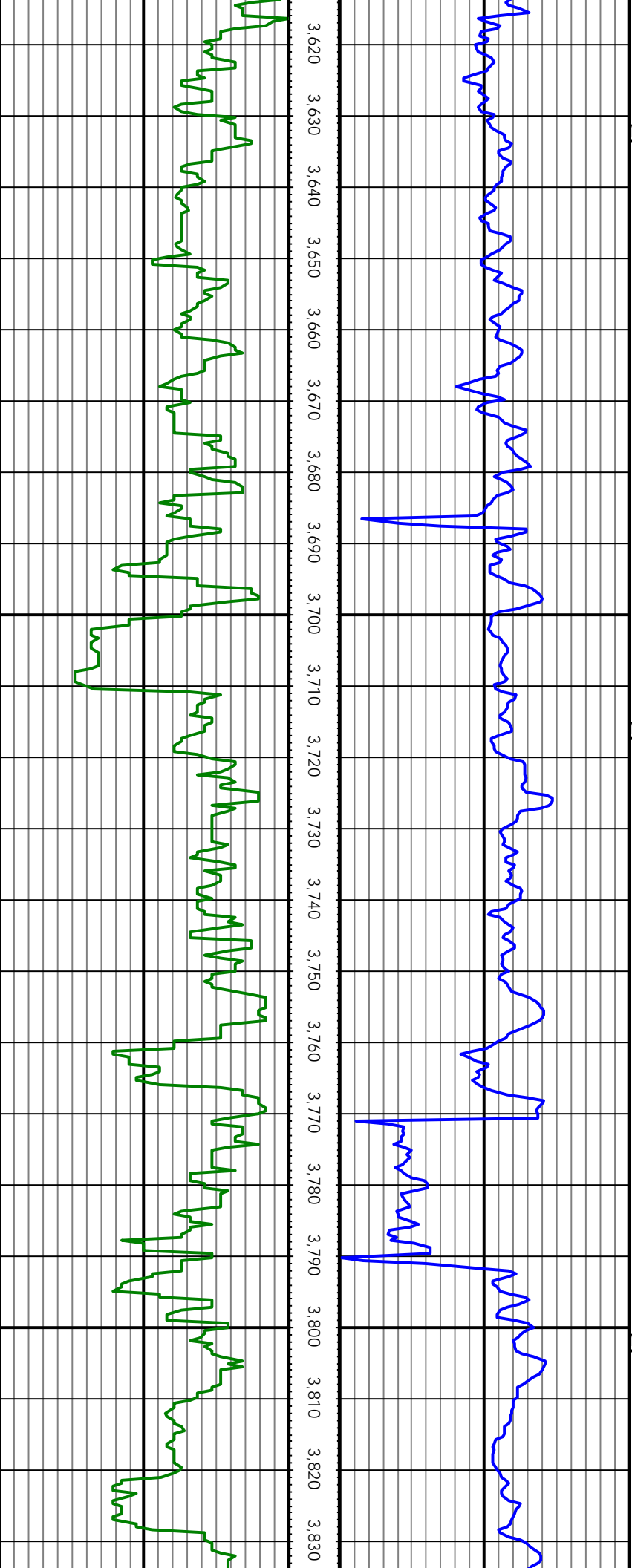
MD: 3785.00 INC: 22.50 AZ: 323.59 TVD: 3548.29 VS: 12



MD: 3877.00 INC: 21.84 AZ: 323.07 TVD: 3633.48 VS: 12

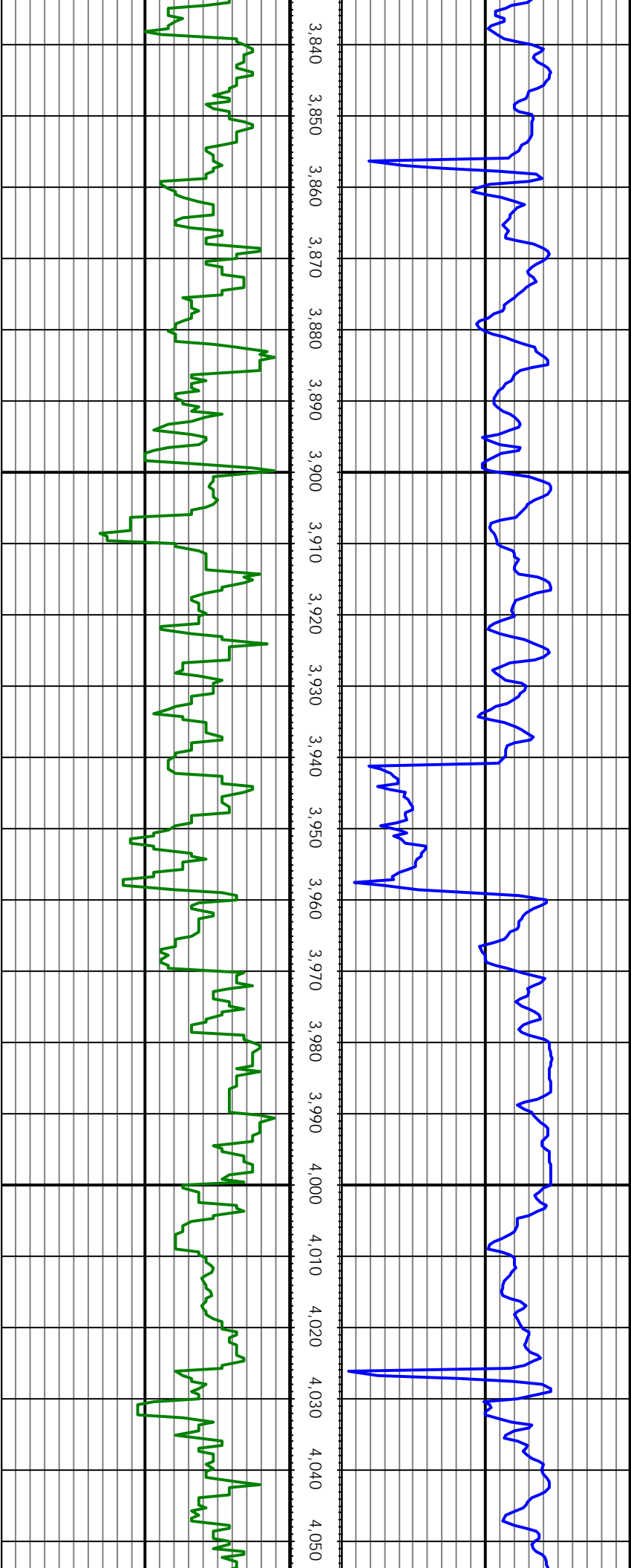
MD: 3967.00 INC: 20.79 AZ: 322.54 TVD: 3717.33 VS: 13

MD: 4059.00 INC: 21.31 AZ: 322.19 TVD: 3803.19 VS: 13



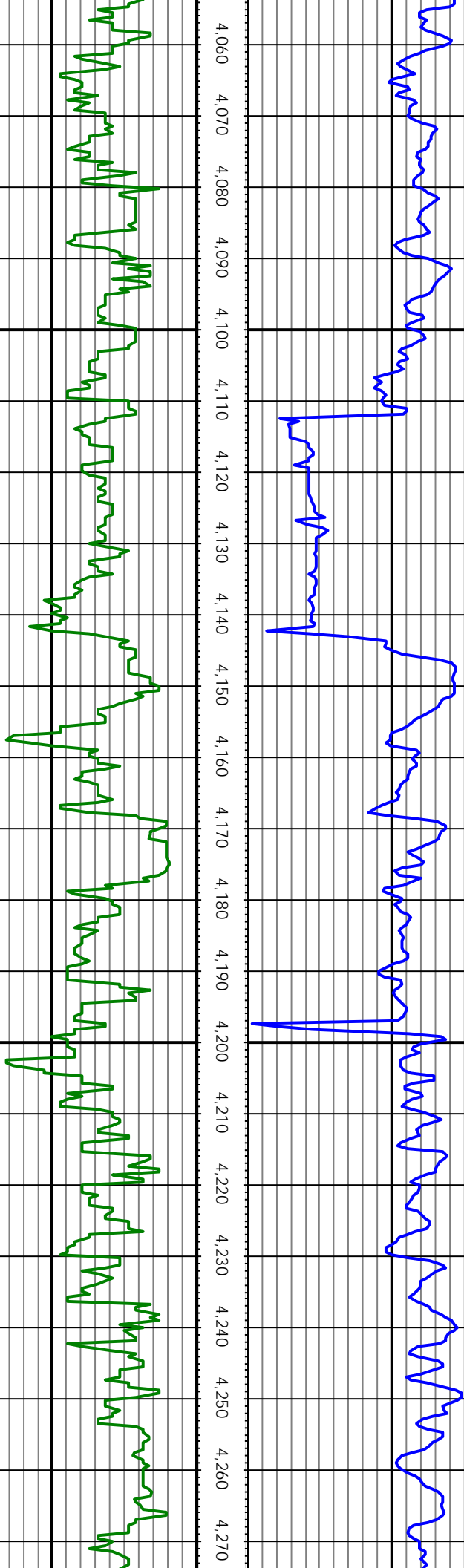
MD: 4150.00 INC: 20.87 AZ: 321.22 TVD: 3888.09 VS: 13

MD: 4242.00 INC: 21.49 AZ: 322.63 TVD: 3973.88 VS: 14



MD: 4334.00 INC: 20.43 AZ: 322.19 TVD: 4059.79 VS: 14

4,060 4,070 4,080 4,090 4,100 4,110 4,120 4,130 4,140 4,150 4,160 4,170 4,180 4,190 4,200 4,210 4,220 4,230 4,240 4,250 4,260 4,270



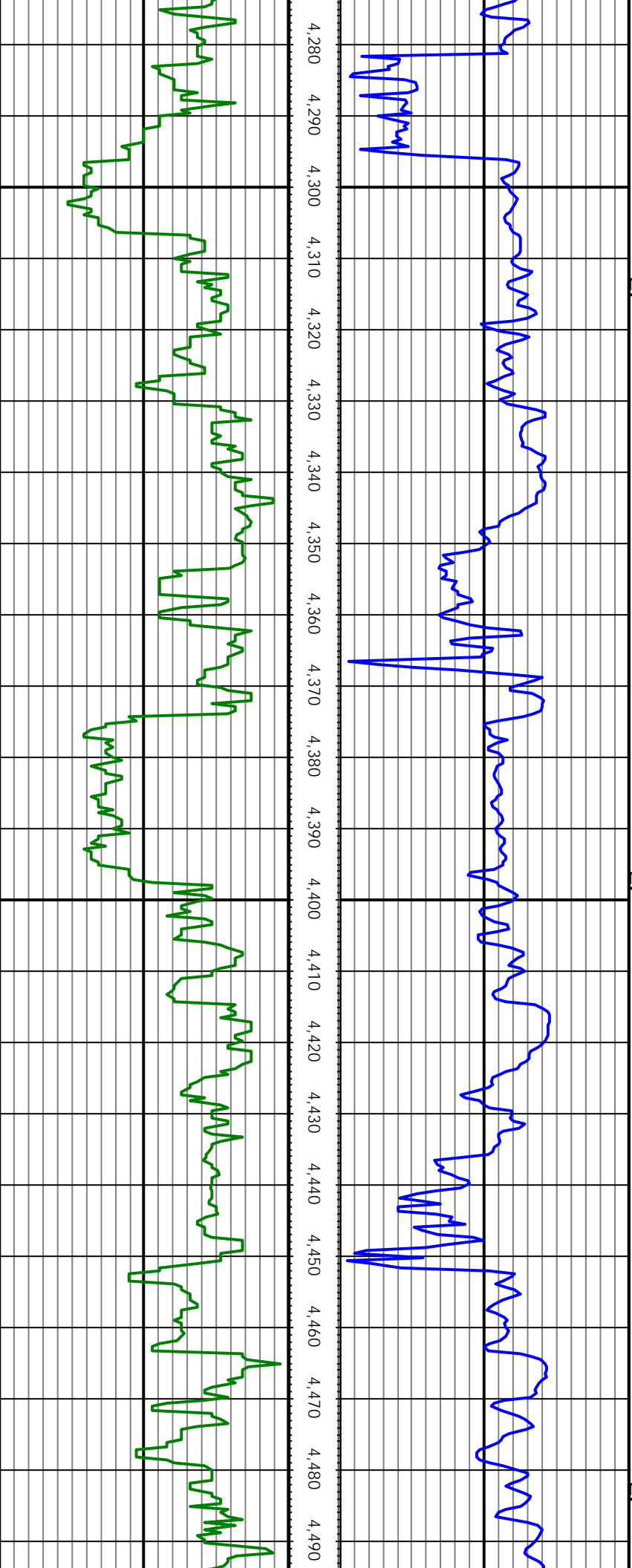
MD: 4426.00 INC: 22.41 AZ: 319.99 TVD: 4145.43 VS: 14

MD: 4517.00 INC: 21.75 AZ: 321.13 TVD: 4229.76 VS: 15

MD: 4609.00 INC: 22.32 AZ: 321.04 TVD: 4315.04 VS: 15

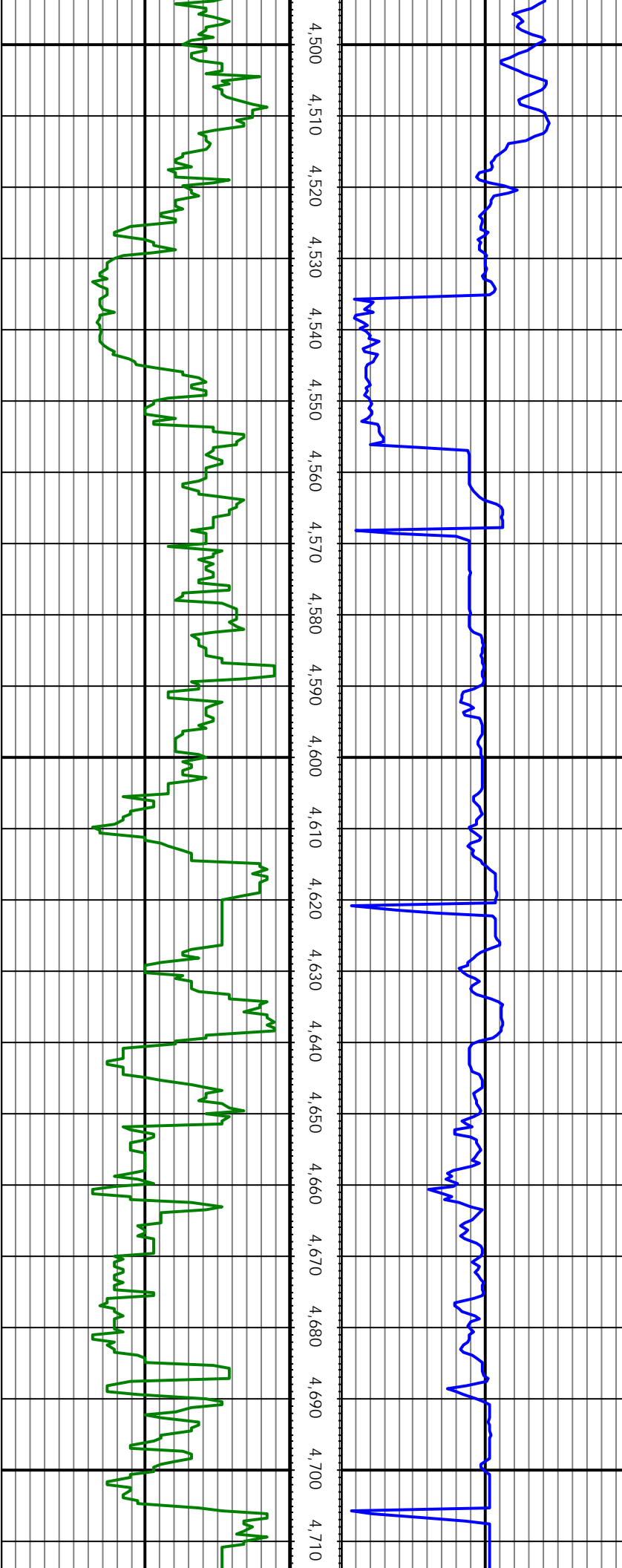
MD: 4699.00 INC: 21.84 AZ: 320.16 TVD: 4398.43 VS: 15

MD: 4791.00 INC: 20.83 AZ: 321.04 TVD: 4484.13 VS: 16



MD: 4883.00 INC: 22.81 AZ: 320.87 TVD: 4569.53 VS: 16

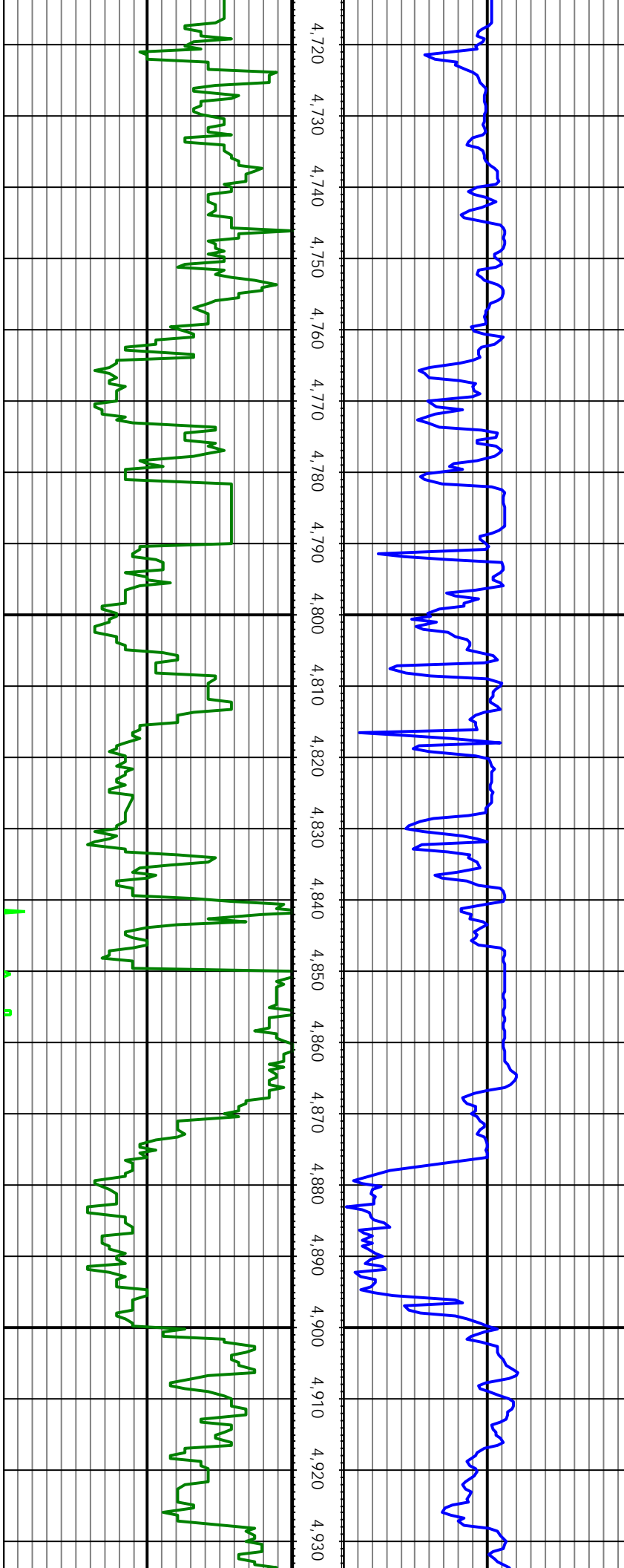
MD: 4975.00 INC: 21.88 AZ: 320.78 TVD: 4654.62 VS: 16



MD: 5067.00 INC: 21.58 AZ: 319.81 TVD: 4740.09 VS: 17

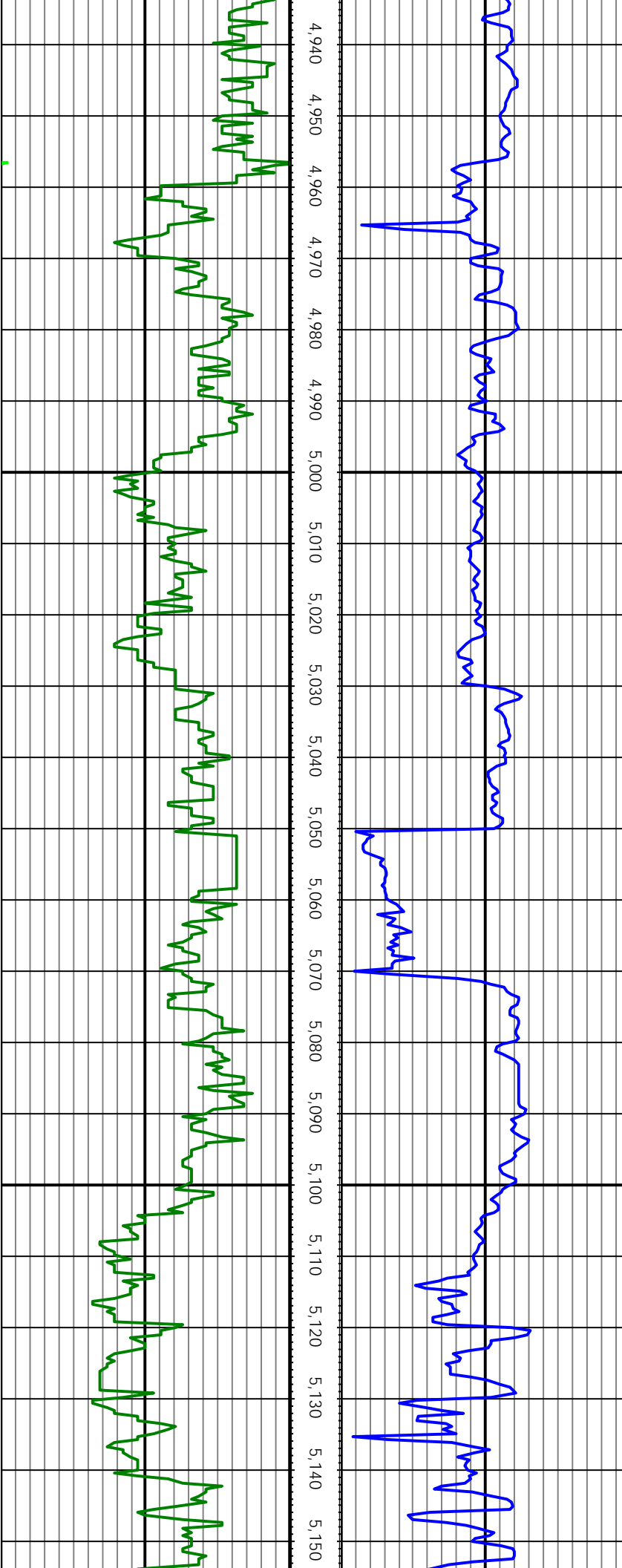
MD: 5159.00 INC: 21.01 AZ: 320.16 TVD: 4825.81 VS: 17

MD: 5252.00 INC: 21.97 AZ: 320.34 TVD: 4912.34 VS: 17



MD: 5345.00 INC: 20.87 AZ: 319.37 TVD: 4998.91 VS: 18

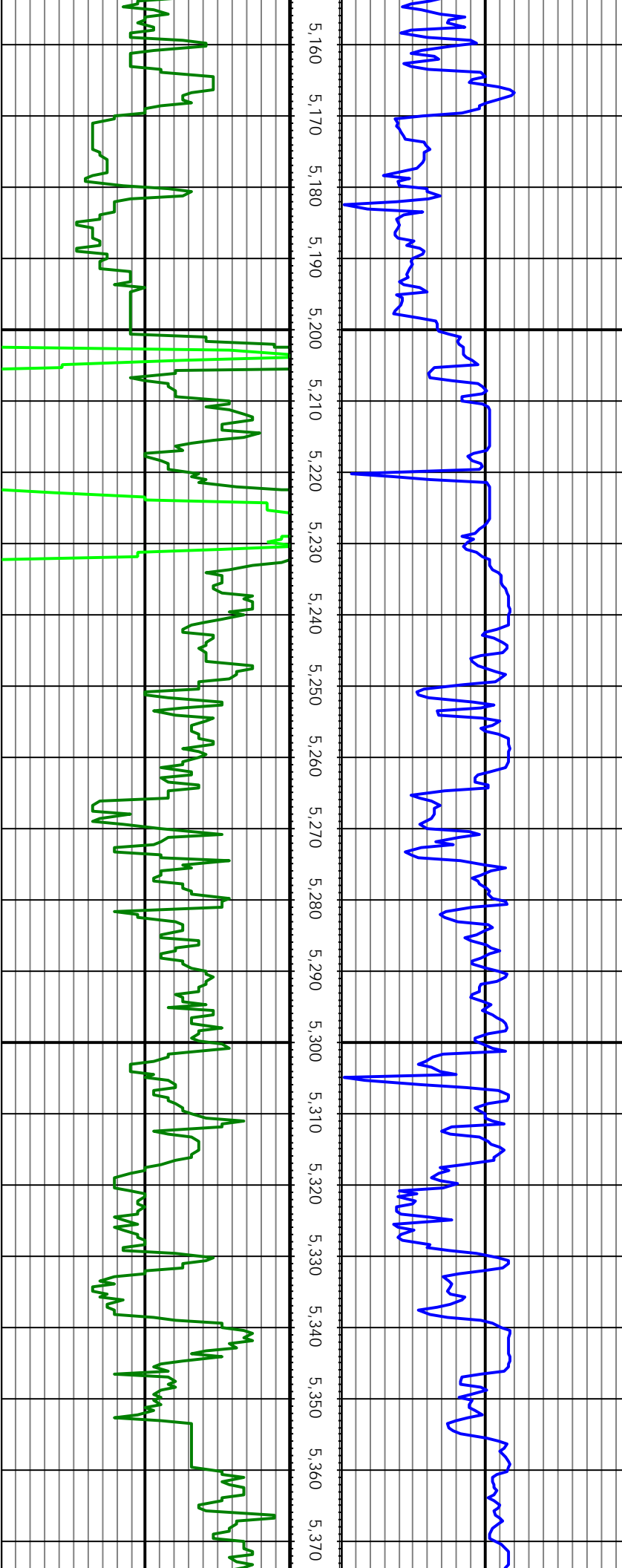
MD: 5436.00 INC: 22.50 AZ: 319.99 TVD: 5083.47 VS: 18



MD: 5528.00 INC: 22.06 AZ: 319.46 TVD: 5168.60 VS: 18

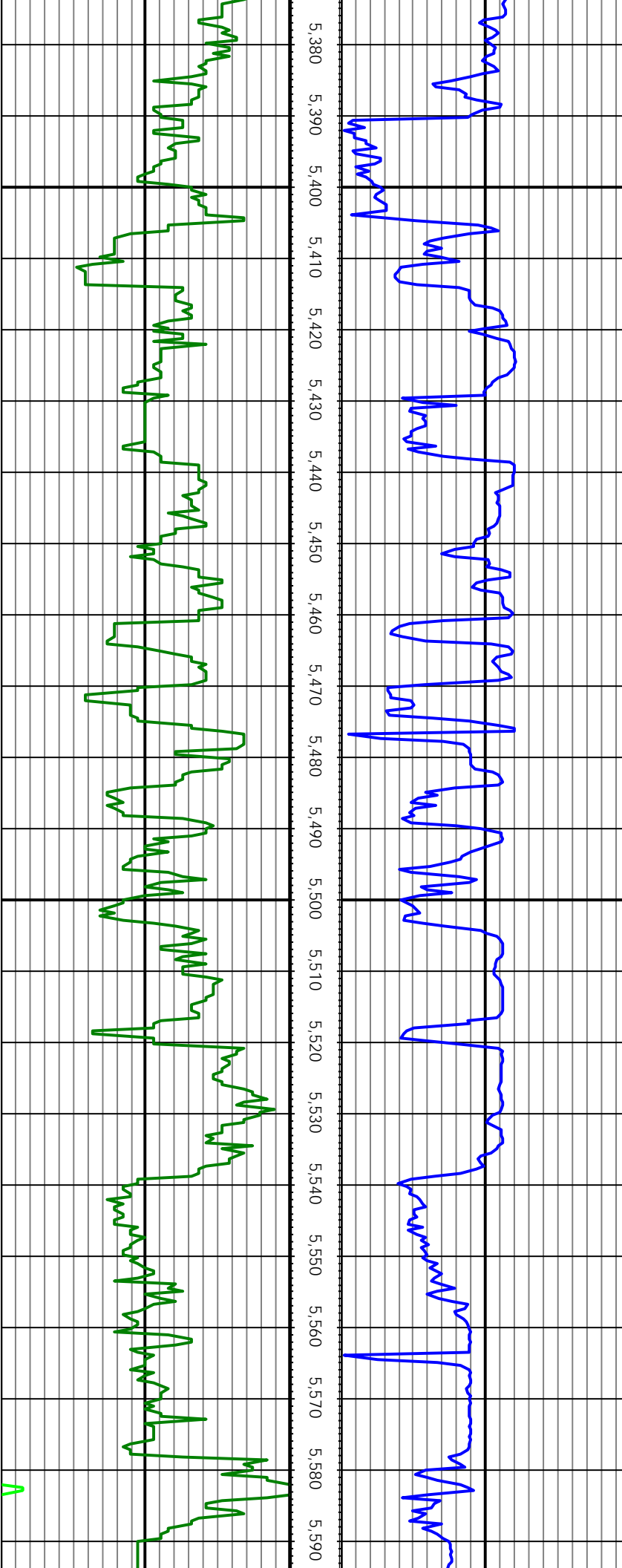
MD: 5619.00 INC: 21.53 AZ: 319.29 TVD: 5253.10 VS: 19

MD: 5711.00 INC: 20.39 AZ: 318.67 TVD: 5339.01 VS: 19



MD: 5802.00 INC: 19.86 AZ: 321.04 TVD: 5424.45 VS: 19

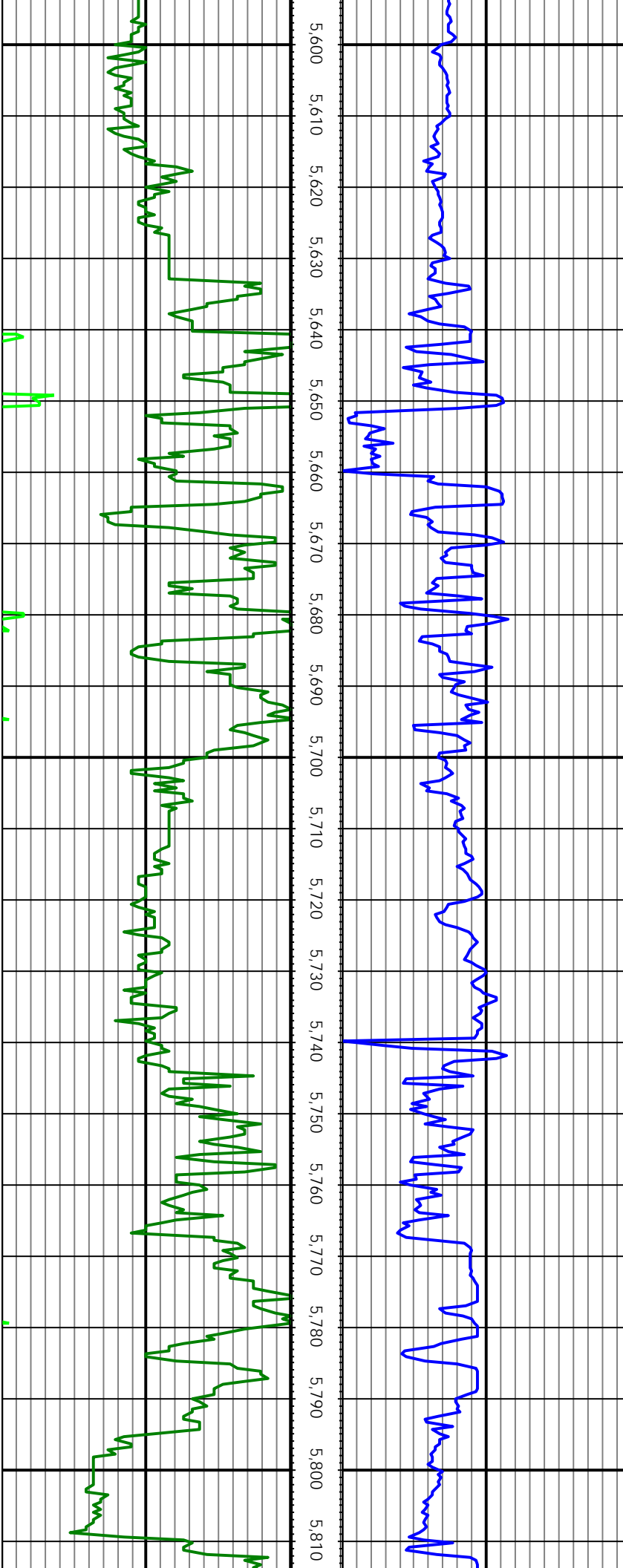
MD: 5894.00 INC: 18.76 AZ: 319.46 TVD: 5511.28 VS: 20



MD: 5986.00 INC: 18.11 AZ: 319.37 TVD: 5598.56 VS: 20

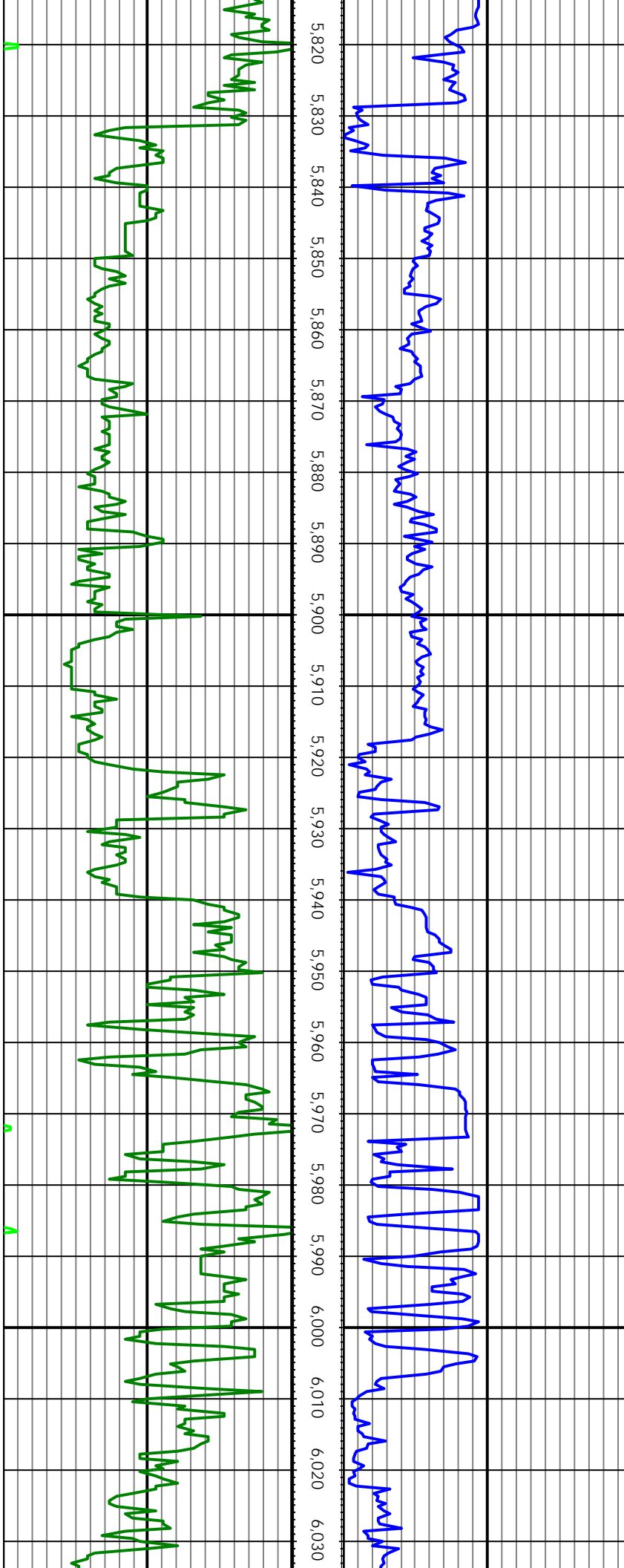
MD: 6078.00 INC: 16.25 AZ: 321.48 TVD: 5686.45 VS: 20

MD: 6170.00 INC: 15.38 AZ: 320.25 TVD: 5774.96 VS: 21



MD: 6262.00 INC: 13.54 AZ: 318.67 TVD: 5864.05 VS: 21

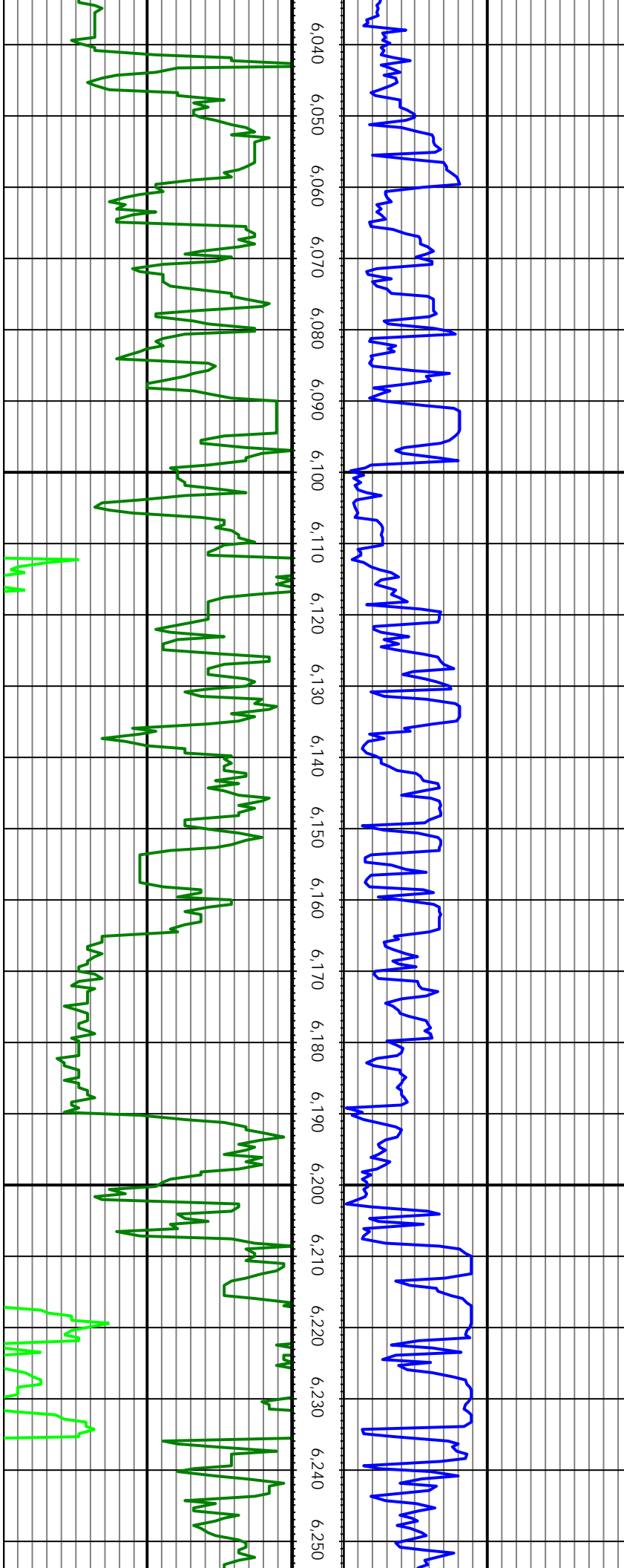
MD: 6354.00 INC: 12.30 AZ: 318.49 TVD: 5953.72 VS: 21



MD: 6446.00 INC: 11.12 AZ: 324.30 TVD: 6043.80 VS: 27

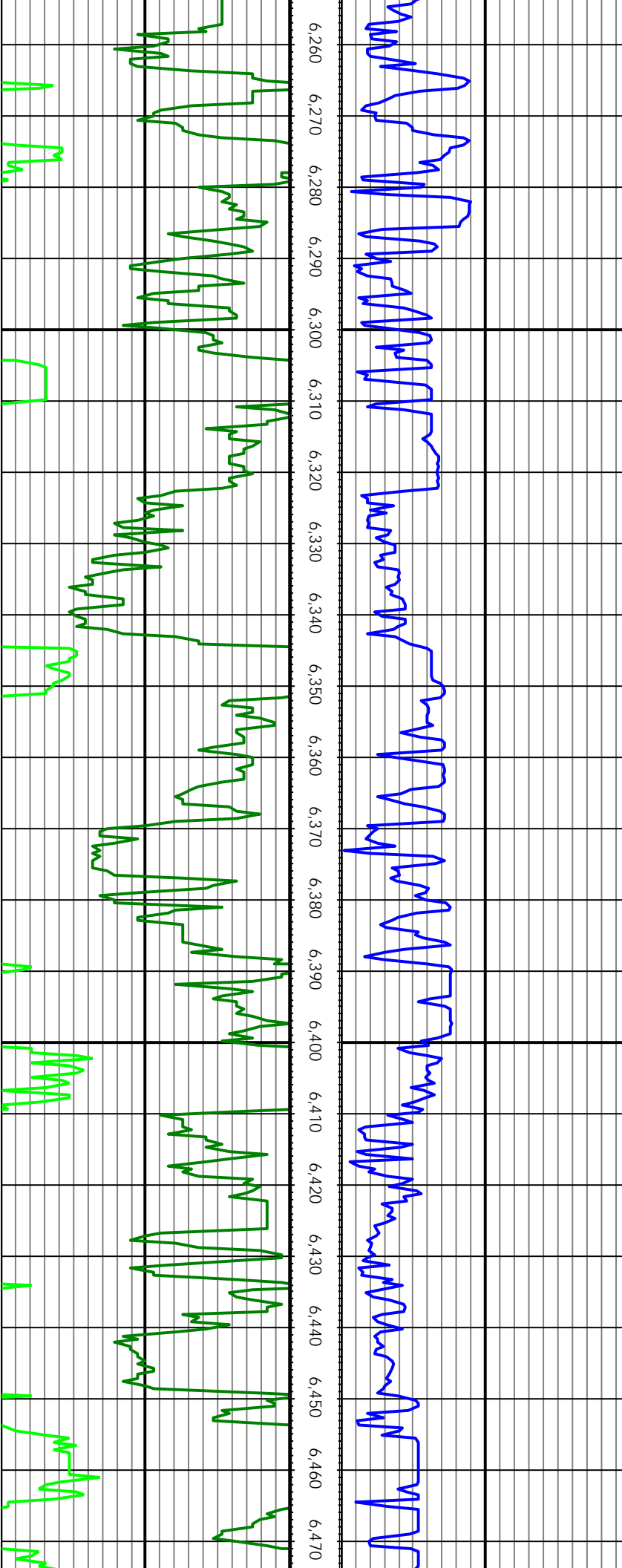
MD: 6538.00 INC: 9.27 AZ: 332.56 TVD: 6134.35 VS: 218

MD: 6629.00 INC: 7.21 AZ: 337.30 TVD: 6224.41 VS: 219



MD: 6721.00 INC: 6.06 AZ: 337.66 TVD: 6315.79 VS: 220

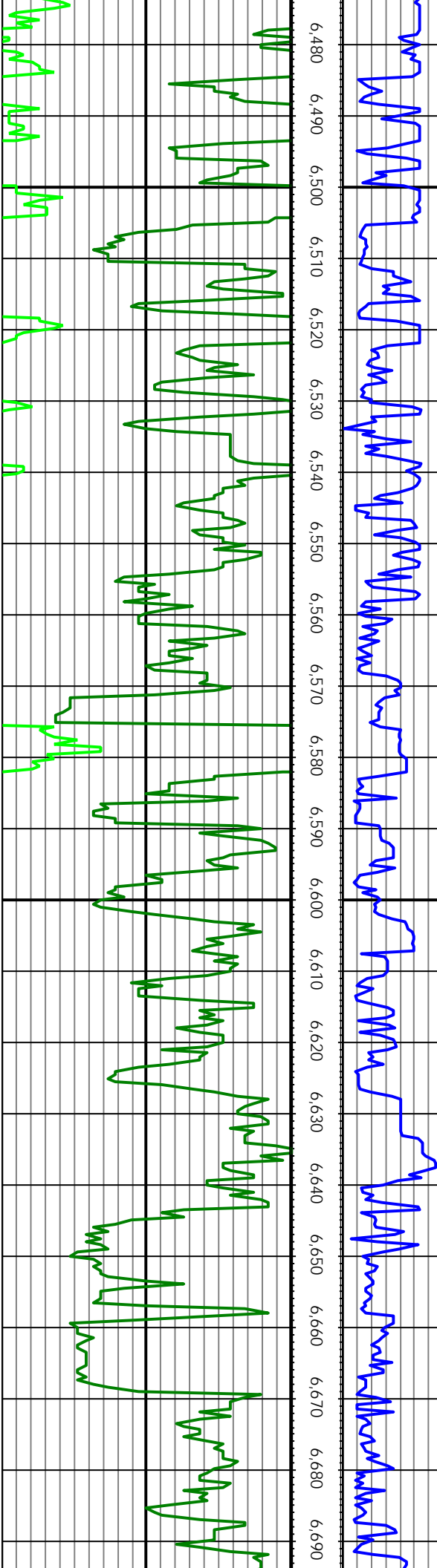
MD: 6813.00 INC: 5.71 AZ: 333.61 TVD: 6407.31 VS: 221

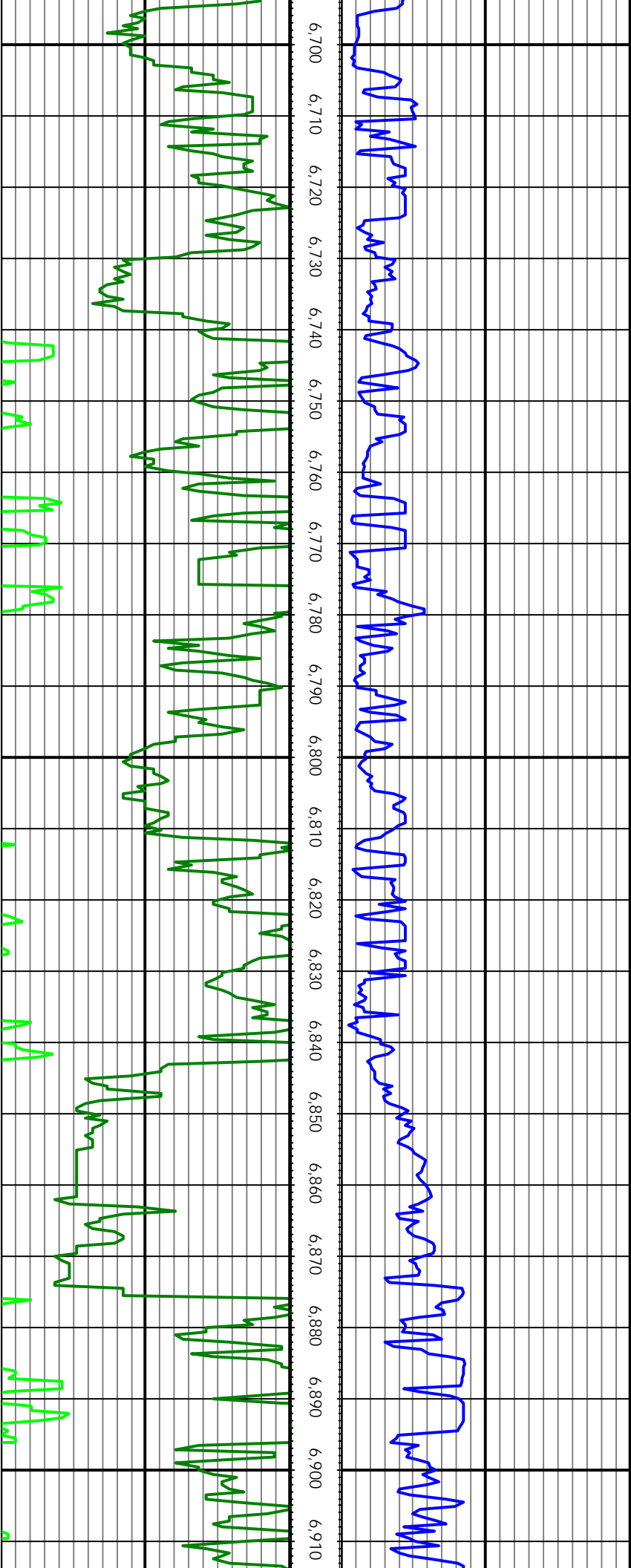


MD: 6905.00 INC: 4.92 AZ: 332.38 TVD: 6498.91 VS: 222

MD: 6997.00 INC: 4.31 AZ: 331.06 TVD: 6590.61 VS: 222

MD: 7088.00 INC: 3.78 AZ: 328.87 TVD: 6681.38 VS: 223





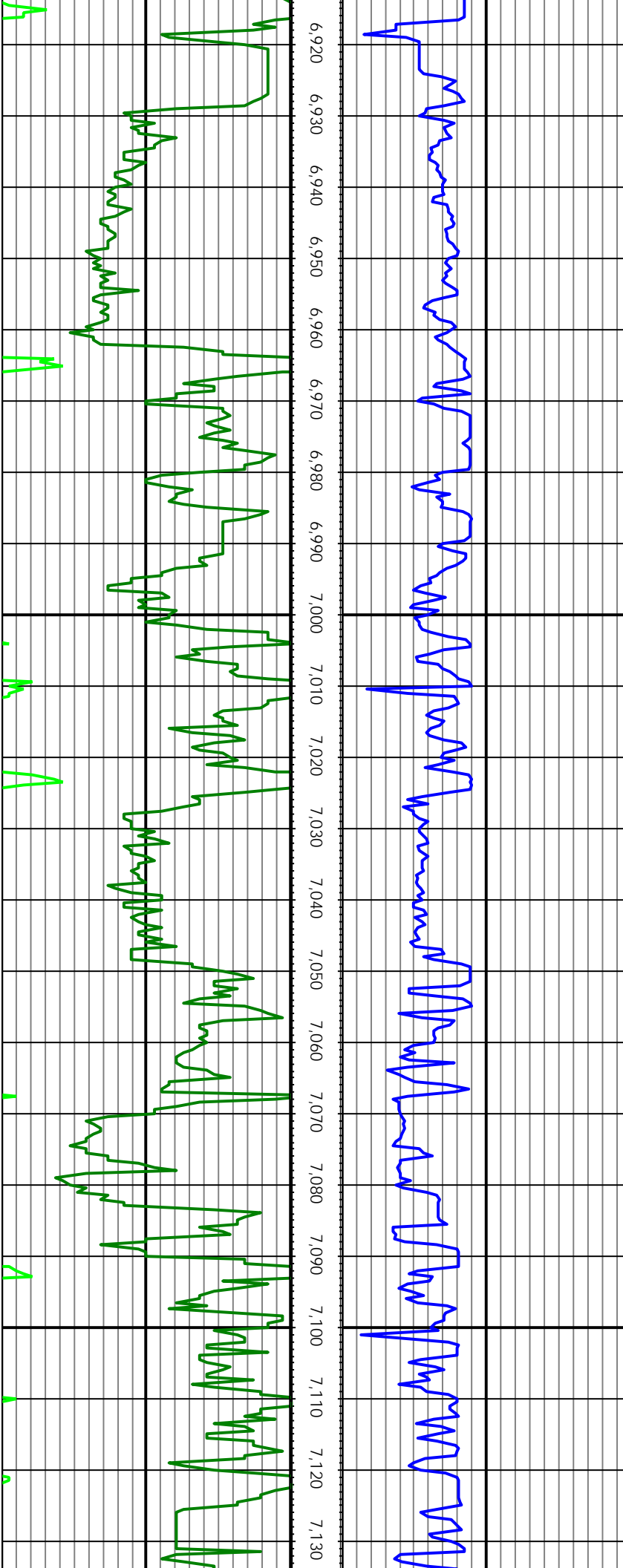
MD: 7179.00 INC: 3.08 AZ: 324.65 TVD: 6772.22 VS: 224

MD: 7270.00 INC: 2.64 AZ: 320.08 TVD: 6863.11 VS: 224

MD: 7360.00 INC: 2.20 AZ: 311.20 TVD: 6953.03 VS: 224

MD: 7452.00 INC: 1.45 AZ: 297.93 TVD: 7044.98 VS: 225

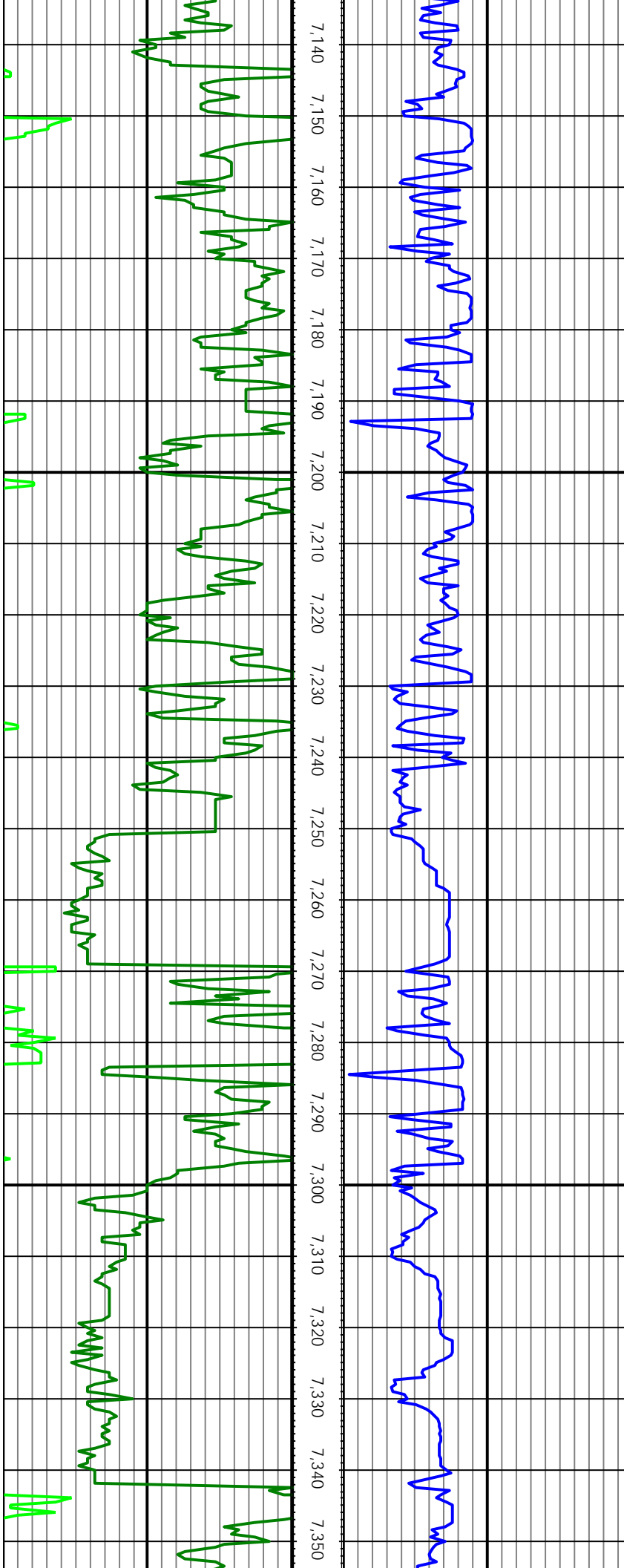
MD: 7542.00 INC: 1.49 AZ: 298.54 TVD: 7134.95 VS: 225



MD: 7342.00 INC: 1.47 AZ: 270.34 TVD: 7134.93 VS: 225

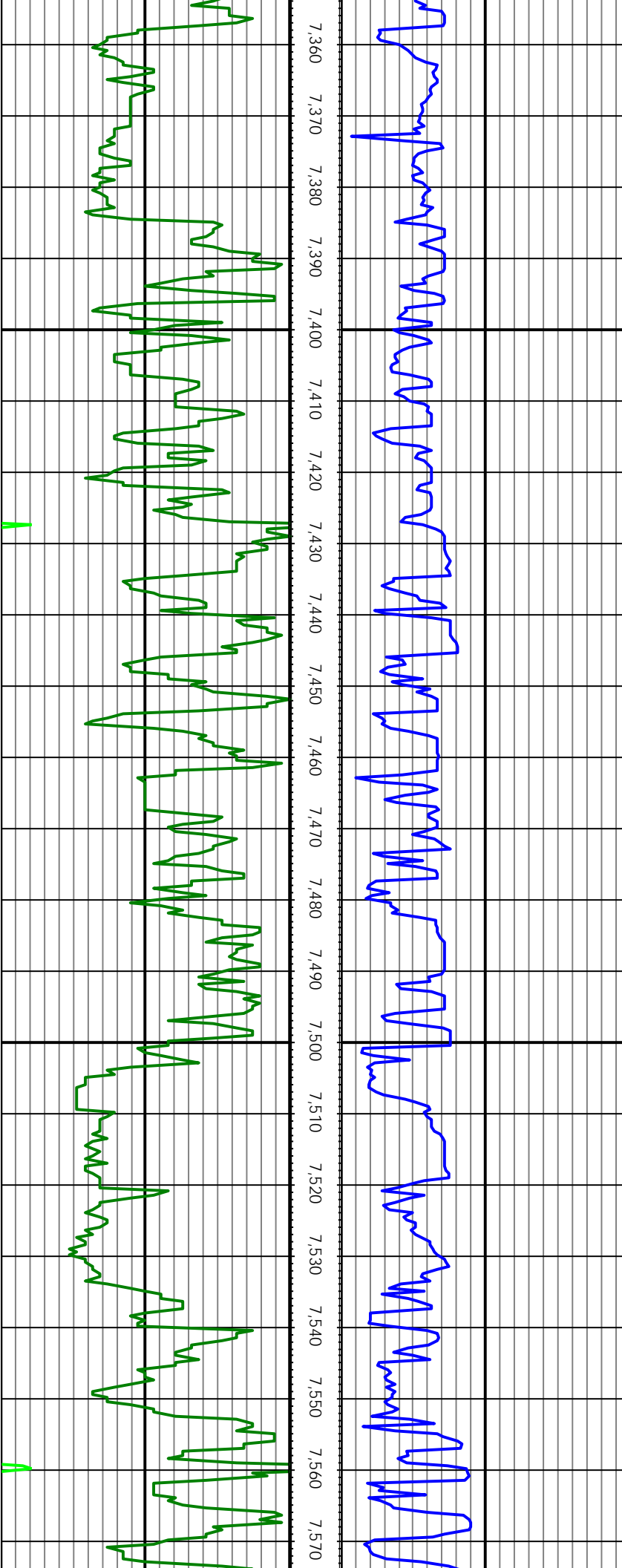
MD: 7633.00 INC: 0.97 AZ: 274.37 TVD: 7225.93 VS: 225

MD: 7722.00 INC: 0.62 AZ: 249.06 TVD: 7314.92 VS: 225



MD: 7814.00 INC: 0.22 AZ: 190.17 TVD: 7406.92 VS: 225

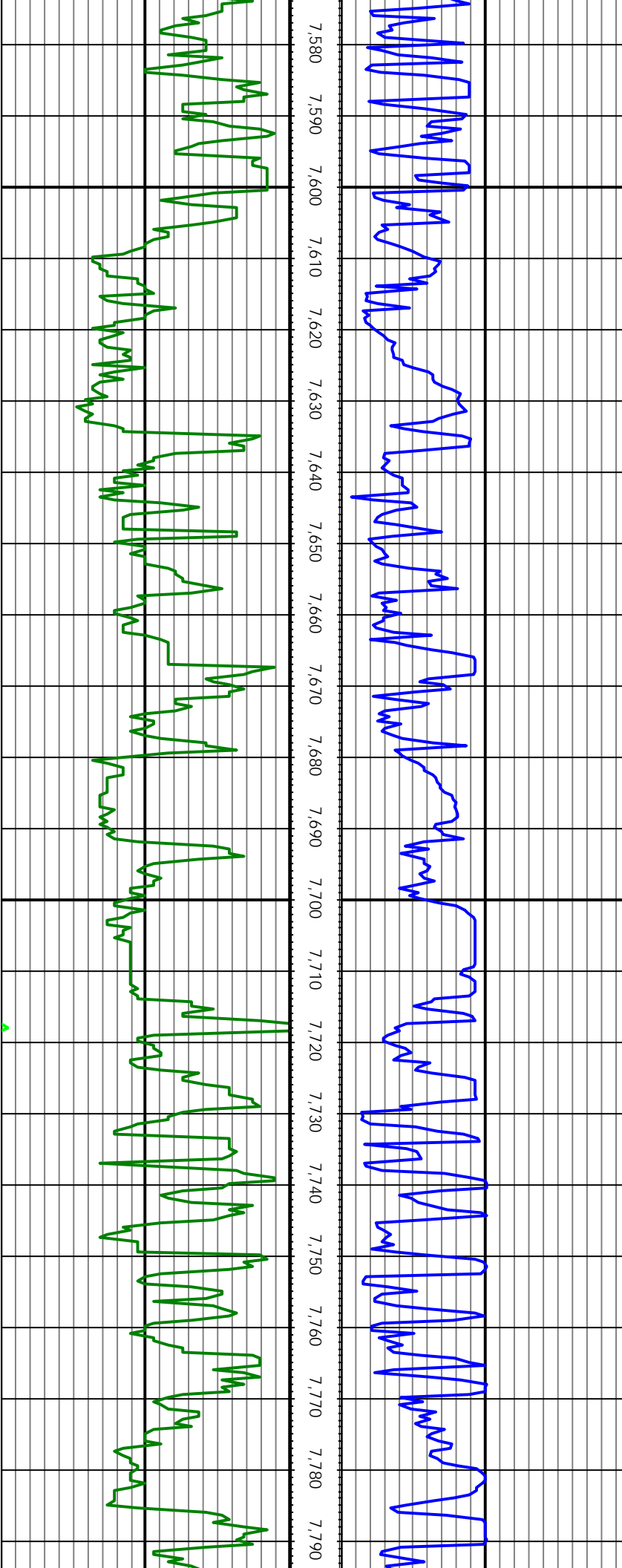
MD: 7904.00 INC: 0.44 AZ: 192.81 TVD: 7496.92 VS: 225



MD: 7994.00 INC: 0.48 AZ: 184.81 TVD: 7586.91 VS: 225

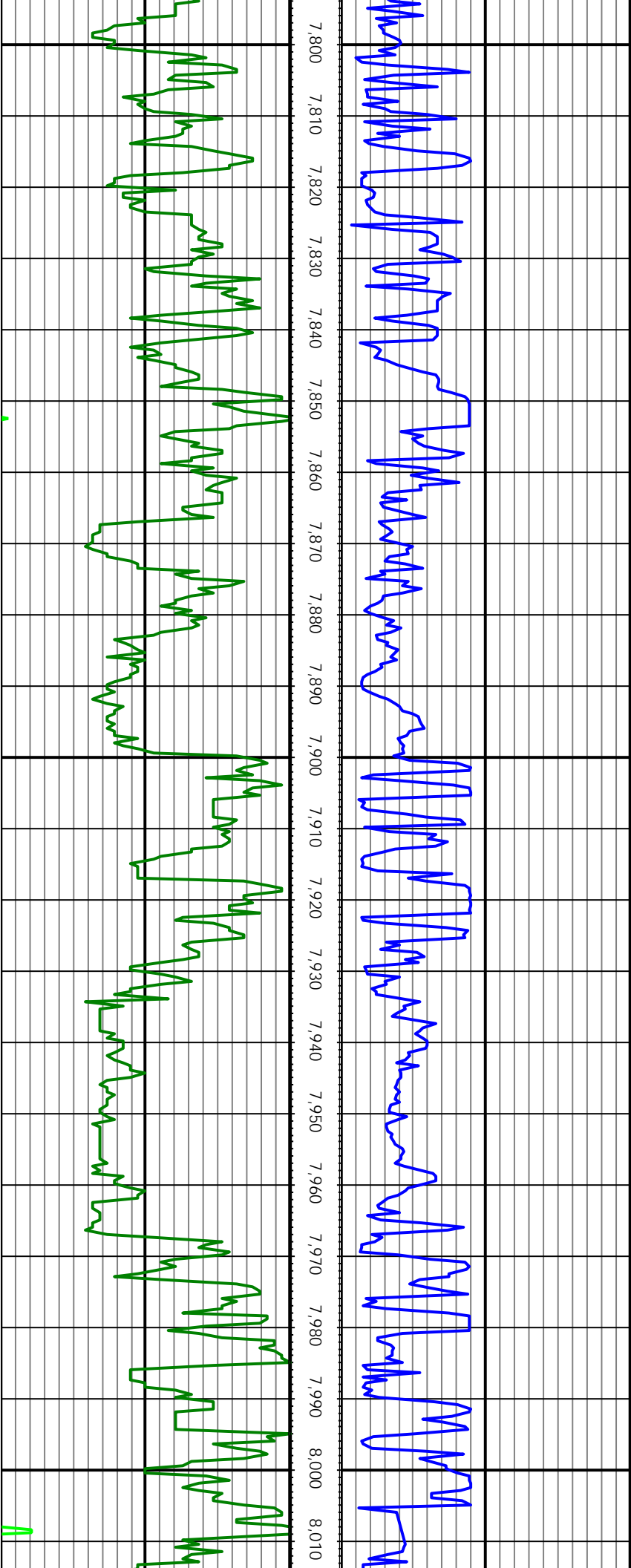
MD: 8086.00 INC: 0.26 AZ: 228.79 TVD: 7678.91 VS: 225

MD: 8177.00 INC: 0.70 AZ: 200.99 TVD: 7769.91 VS: 225



MD: 8269.00 INC: 0.88 AZ: 210.04 TVD: 7861.90 VS: 225

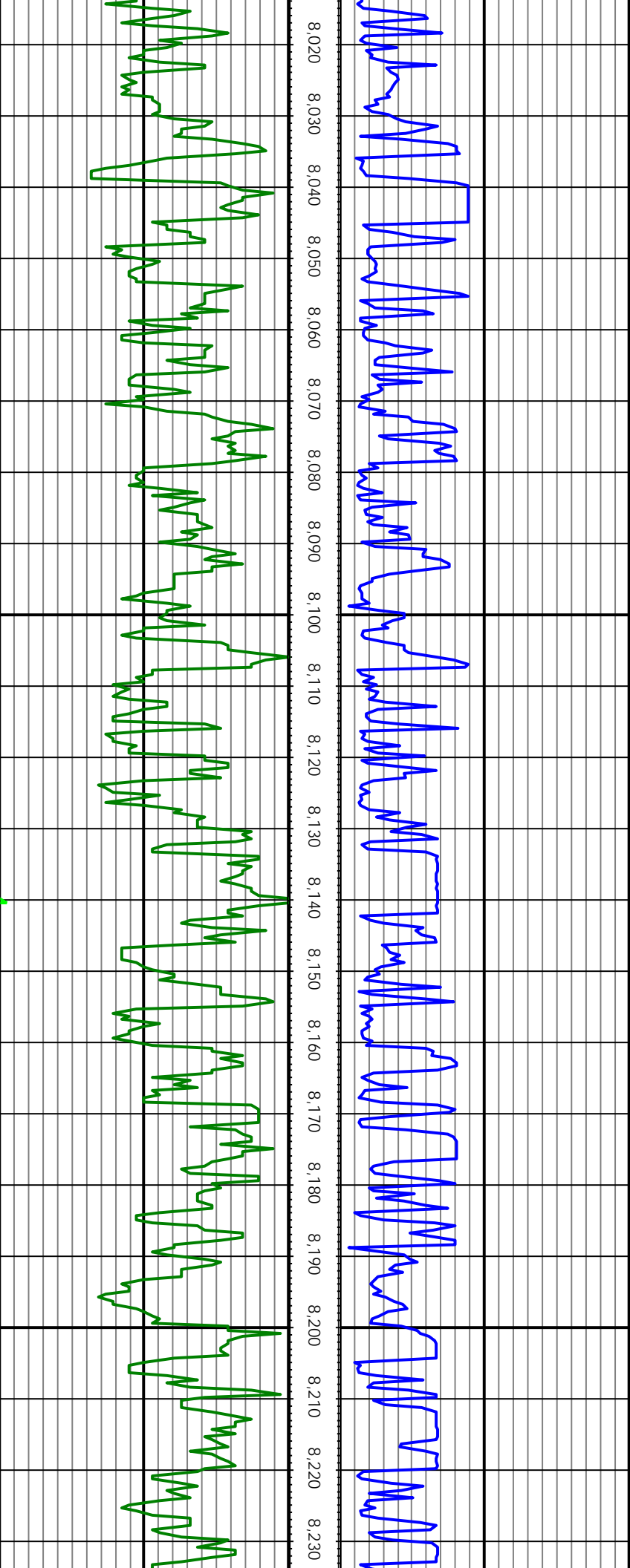
MD: 8360.00 INC: 1.01 AZ: 192.28 TVD: 7952.89 VS: 225

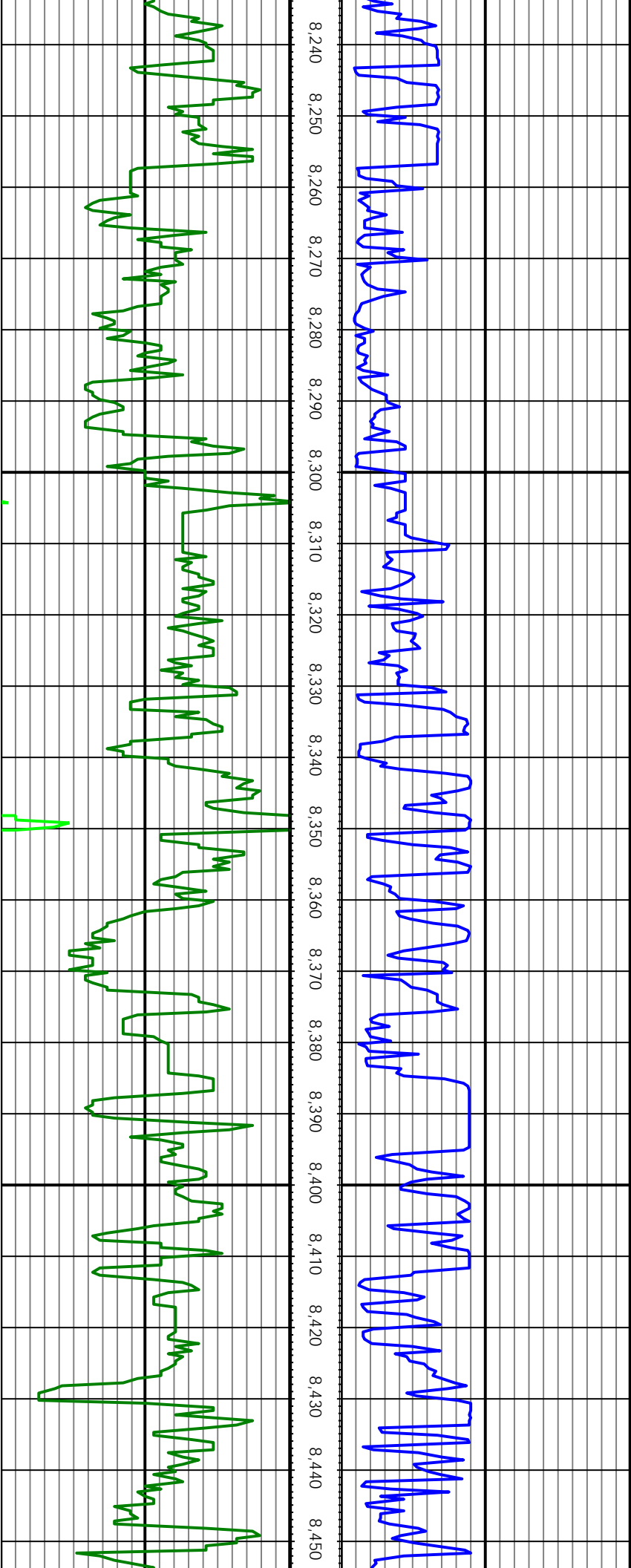


MD: 8450.00 INC: 0.79 AZ: 204.85 TVD: 8042.88 VS: 225

MD: 8540.00 INC: 1.40 AZ: 192.28 TVD: 8132.86 VS: 225

MD: 8630.00 INC: 1.54 AZ: 202.74 TVD: 8222.83 VS: 225





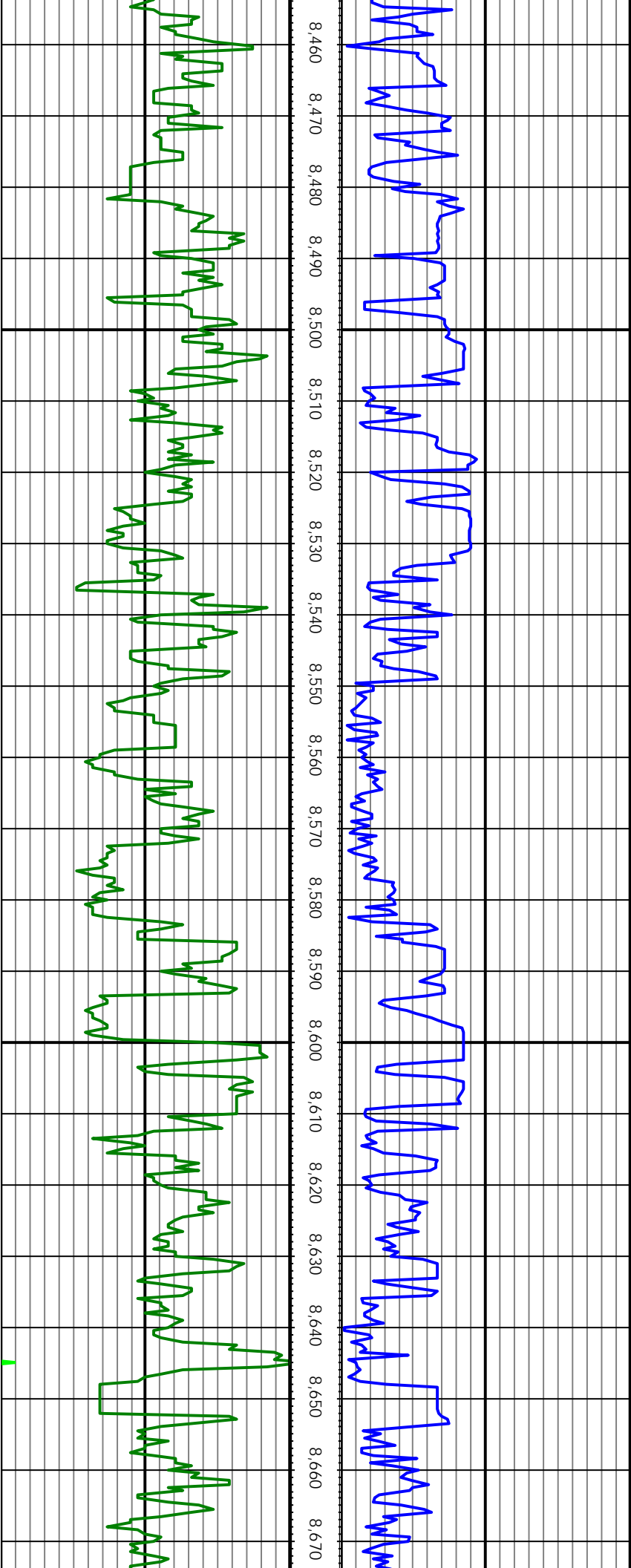
MD: 8720.00 INC: 2.15 AZ: 203.80 TVD: 8312.78 VS: 225

MD: 8809.00 INC: 2.29 AZ: 204.32 TVD: 8401.72 VS: 224

MD: 8900.00 INC: 2.77 AZ: 210.21 TVD: 8492.63 VS: 224

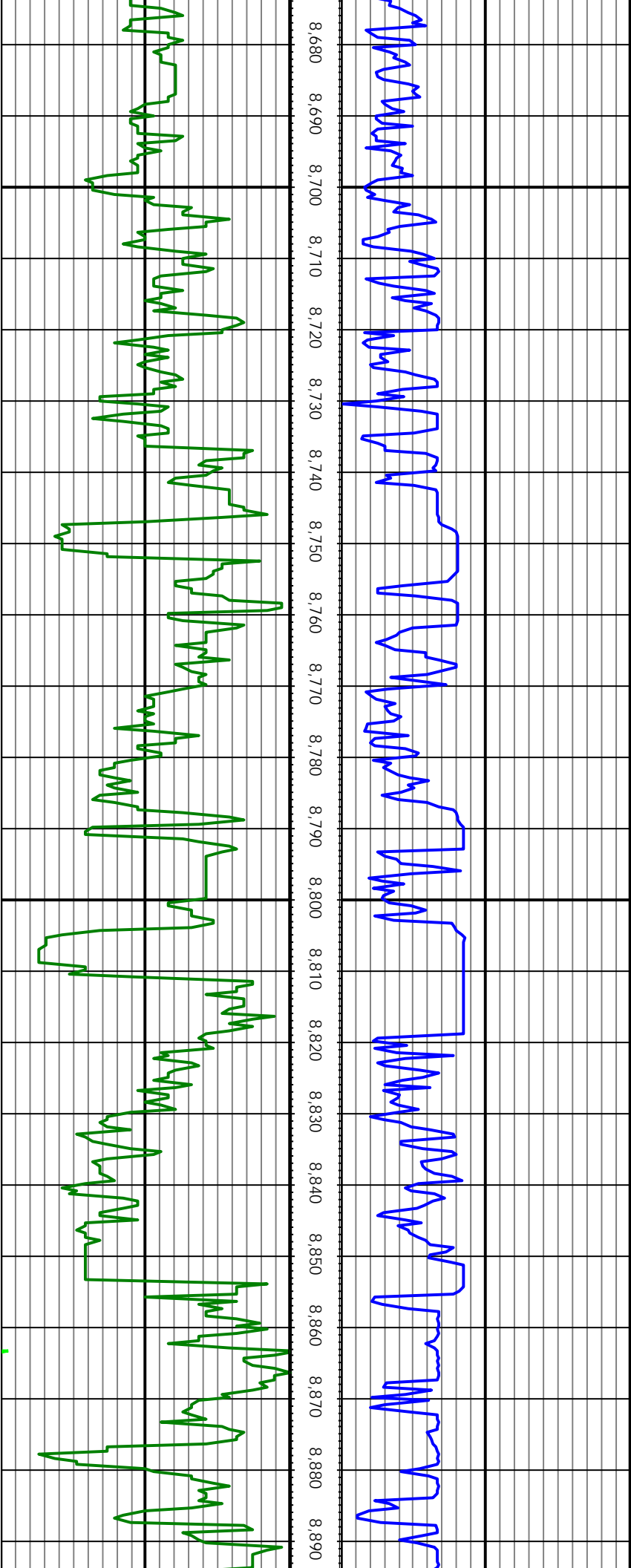
MD: 8992.00 INC: 2.24 AZ: 185.69 TVD: 8584.54 VS: 224

MD: 9082.00 INC: 2.07 AZ: 177.96 TVD: 8674.48 VS: 224



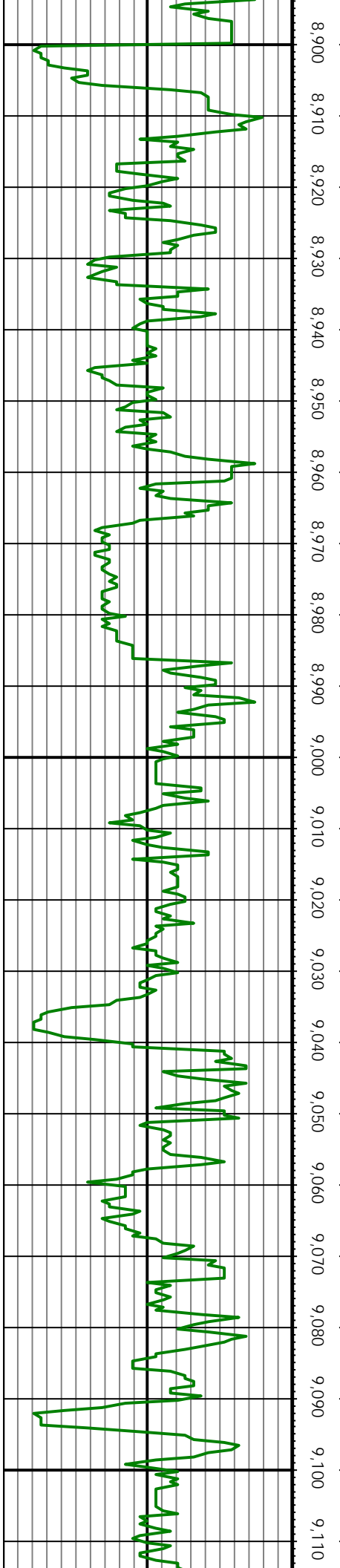
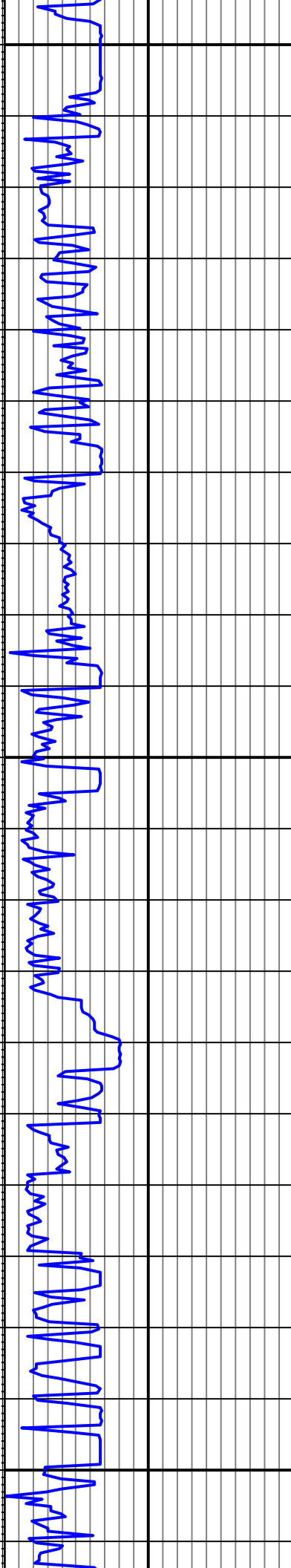
MD: 9172.00 INC: 2.33 AZ: 194.83 TVD: 8764.41 VS: 224

MD: 9261.00 INC: 2.37 AZ: 187.19 TVD: 8853.34 VS: 223

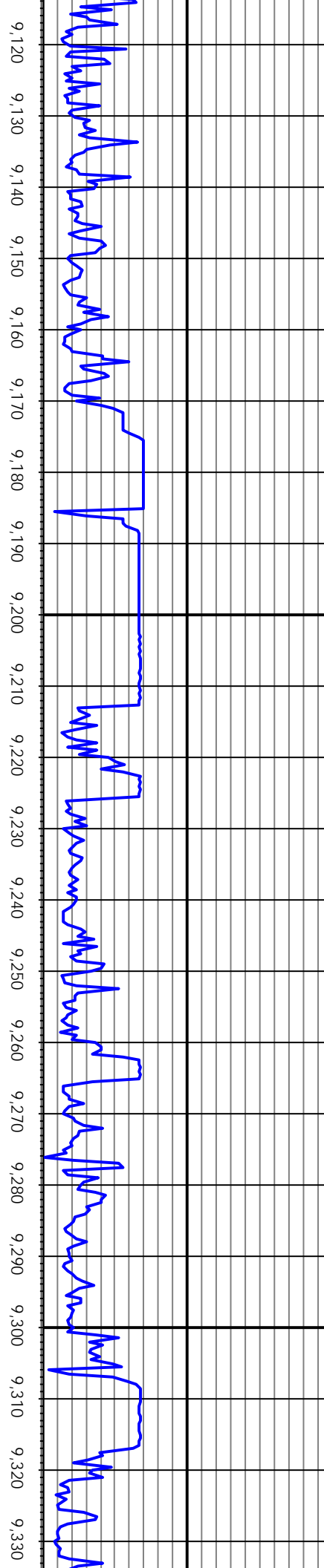


MD: 9353.00 INC: 1.98 AZ: 165.83 TVD: 8945.27 VS: 223

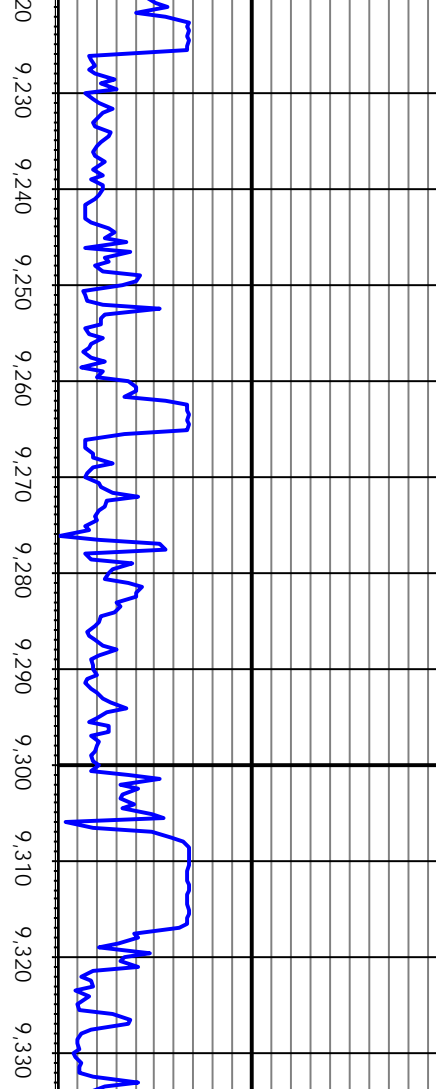
MD: 9444.00 INC: 2.29 AZ: 156.51 TVD: 9036.21 VS: 223



MD: 9535.00 INC: 1.85 AZ: 183.93 TVD: 9127.15 VS: 222



MD: 9628.00 INC: 2.11 AZ: 193.16 TVD: 9220.10 VS: 222



MD: 9716.00 INC: 1.98 AZ: 195.27 TVD: 9308.04 VS: 222

