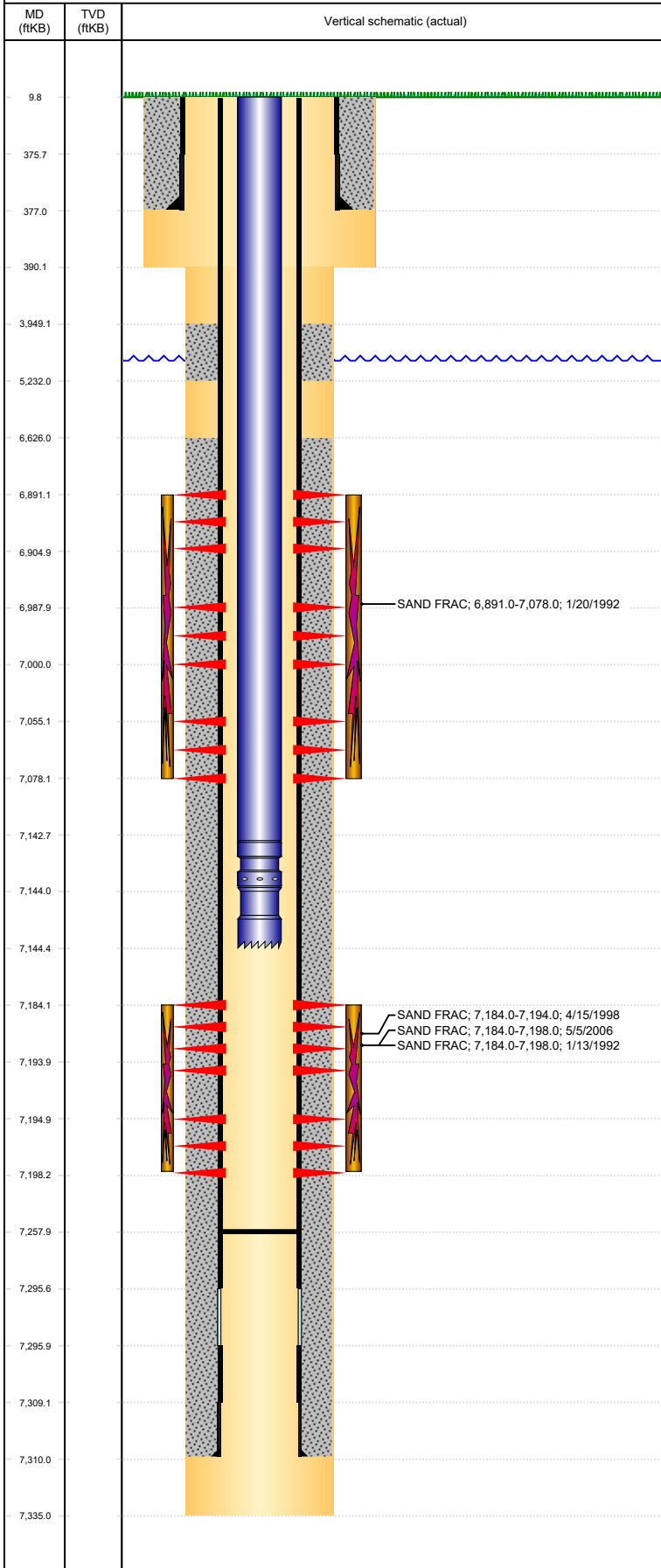


Well Name: KRISTAL 3-20

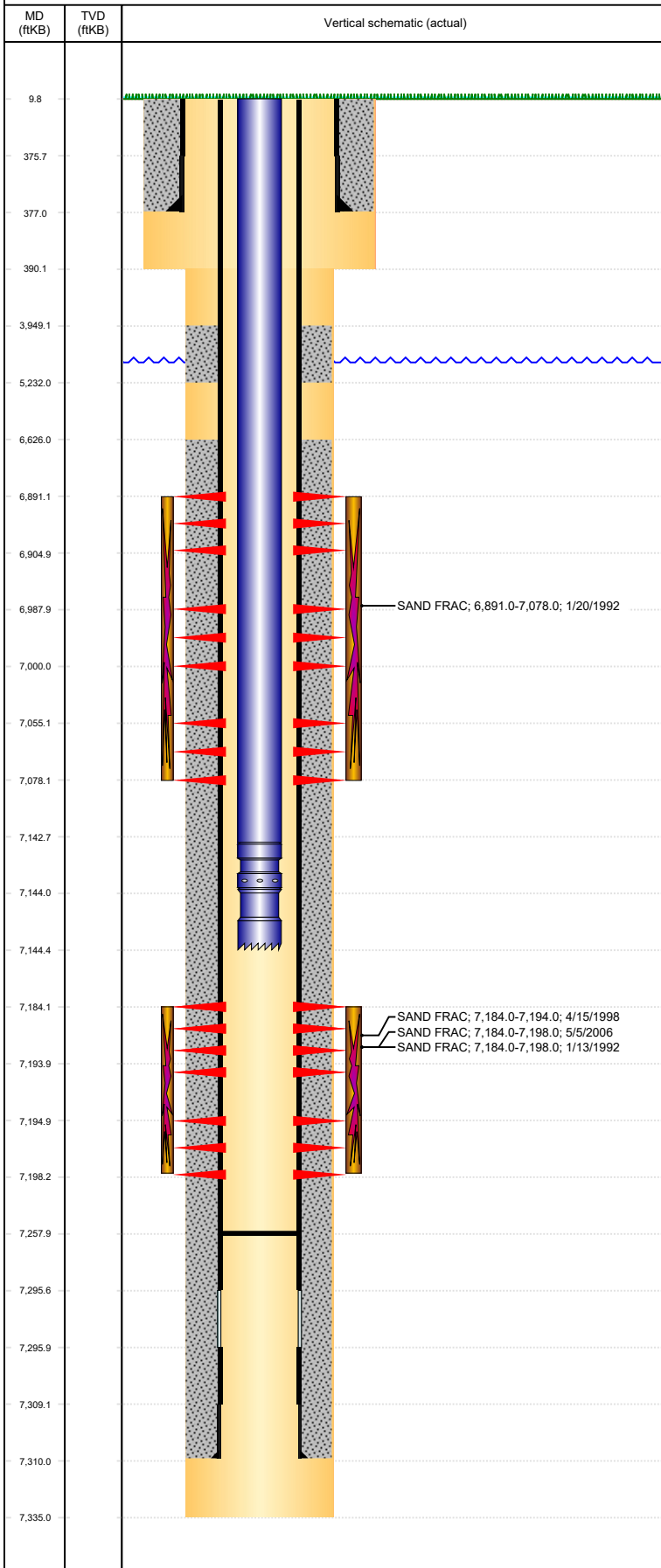
VERTICAL, ORIGINAL HOLE, 5/2/2022 10:02:39 AM



Well Header			
API	Business Unit	District	Well Config
05-123-15411	DJ BASIN	15	VERTICAL
Original KB Elevation (ft)	KB - GL / MSL (ftKB)	Spud Date	P & A Date
4,765	10.00	12/27/1991	
Comment			
DISCREPANCY ON KB DEPTH BETWEEN FORM 5 AND LOGS. FORM 5 SHOWS CASING DEPTH OF 377, ANADARKO REPORT AND WELL COMPLETION REPORT SHOW 388.			
Directions To Well			
Congressional Location			
Quarter 3	Quarter 4	Section	Township
NE	NW	20	4
Twonshp N/S Dir		Range	Range E/W Dir
N		65	W
Bottom Hole Legal Location			
Bottom Hole Legal Location			
Plug Back Total Depths			
Date	Depth (ftKB)	Method	Com
12/31/1991	7,285.0	CASING TALLY	TOP OF FLOAT COLLAR
1/6/1992	7,272.0	CASED HOLE LOG	DEPTH LOGGER ON CBL
3/1/2010	7,258.0	TAG	
Wellbore Sections			
Section Des	Size (in)	Act Top, MD (ftKB)	Act Btm, MD (ftKB)
SURFACE	12 1/4	10	390
PRODUCTION	7 7/8	390	7,335
Zone Statuses			
Zone Name	Status Date	Status	Fluid Type
NIOBRARA	1/24/1992	PR	
CODELL	1/24/1992	PR	
CODELL	4/17/1998	PR	
CODELL	5/24/2006	PR	
Casing Strings			
Surface, 377.0ftKB			
Casing Description	Run Date	OD (in)	Wt/Len (l...)
Surface	12/27/1991	8 5/8	24.00
Production, 7,310.0ftKB			
Casing Description	Run Date	OD (in)	Wt/Len (l...)
Production	12/31/1991	4 1/2	11.60
Cement			
Description	Top Depth (ftKB)	Bottom Depth (ftKB)	
SURFACE CASING CEMENT	10.0	377.0	
Description	Top Depth (ftKB)	Bottom Depth (ftKB)	
PRODUCTION CASING CEMENT	3,949.0	5,232.0	
Description	Top Depth (ftKB)	Bottom Depth (ftKB)	
PRODUCTION CASING CEMENT	6,626.0	7,310.0	
Tubing Strings			
Tubing Description	Run Date	String...	ID (in)
PRODUCTION TUBING	5/19/2006	2 3/8	
Tubing Components			
Item Des	OD (in)	Wt (lb/ft)	Grade
TUBING, J-55, 4.7	2 3/8		J55
SEATING NIPPLE,	2 3/8		
NOTCHED COLLAR,	2 3/8		
Tubing Components			
Tubing Description	Run Date	String...	ID (in)
Tubing - Production	3/2/2010	2 3/8	2.00
Tubing Components			
Item Des	OD (in)	Wt (lb/ft)	Grade
Tubing	2 3/8		
Seal Nipple	2 3/8		
Notched collar	2 3/8		

Well Name: KRISTAL 3-20

VERTICAL, ORIGINAL HOLE, 5/2/2022 10:02:39 AM



Run Date	Des	Make	OD (in)	Top (ftKB)	Btm (ftKB)	Pr op R un

Logs			
Date	Type	Top, MD (ftKB)	Btm, MD (ftKB)
12/31/1991	COMPENSATED DENSITY	4,350.0	7,331.0
12/31/1991	INDUCTION	388.0	7,333.0
1/6/1992	CEMENT BOND	3,850.0	7,266.0

Perforation Data					
Linked Zone	Bnch/St g	Sum of Entered Shot Total	Top (ftKB)	Btm (ftKB)	Date
NIOBRARA, ORIGINAL HOLE	A	8	6,891.00	6,905.00	1/18/1992
NIOBRARA, ORIGINAL HOLE	B	7	6,988.00	7,000.00	1/18/1992
NIOBRARA, ORIGINAL HOLE	C	4	7,055.00	7,078.00	1/18/1992
CODELL, ORIGINAL HOLE		20	7,184.00	7,194.00	1/11/1992
CODELL, ORIGINAL HOLE		20	7,184.00	7,194.00	4/13/1998
CODELL, ORIGINAL HOLE		3	7,195.00	7,198.00	1/11/1992
Total		62			

Stimulation Intervals			
Interval...	Start Date	Primary Job Type	Zone
1	1/13/1992	DRILLING/COMPLETION - ORIGINAL	CODELL, ORIGINAL HOLE
Technical Result		Tech Result Details	Tech Result Note

Comment
CODELL
FRAC'D DOWN CASING & TUBING

Interval...	Start Date	Primary Job Type	Zone
1	1/20/1992	DRILLING/COMPLETION - ORIGINAL	NIOBRARA, ORIGINAL HOLE
Technical Result		Tech Result Details	Tech Result Note

Comment
NIOBRARA
FRAC'D DOWN CASING & TUBING

Interval...	Start Date	Primary Job Type	Zone
1	4/15/1998	RE-FRAC	CODELL, ORIGINAL HOLE
Technical Result		Tech Result Details	Tech Result Note

Comment
CODELL REFRAC
FRAC'D DOWN CASING & TUBING

Interval...	Start Date	Primary Job Type	Zone
1	5/5/2006	TRI-FRAC	CODELL, ORIGINAL HOLE
Technical Result		Tech Result Details	Tech Result Note

Comment
CODELL TRIFRAC