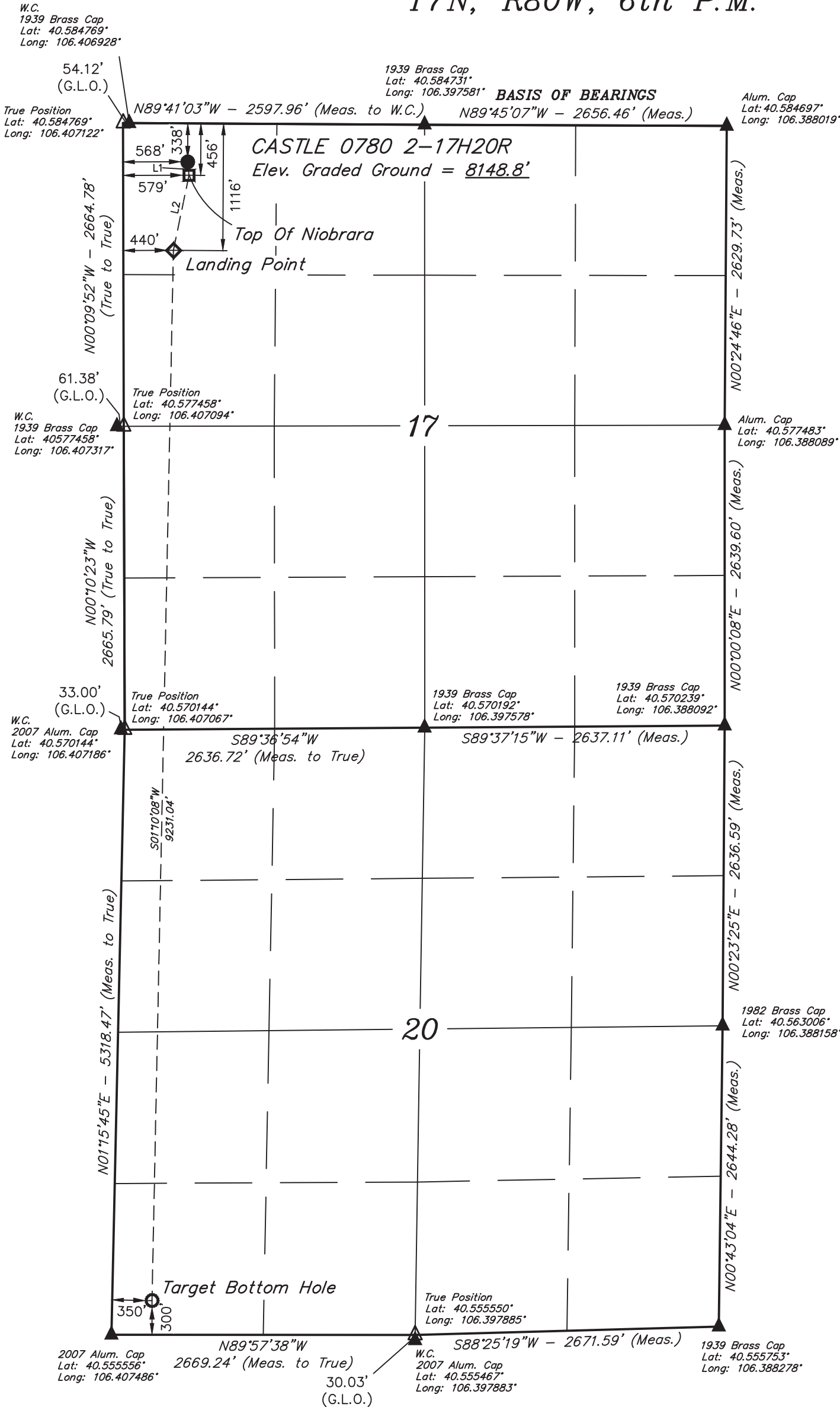


T7N, R80W, 6th P.M.



NOTE:  
THE PROPOSED WELLHEAD FOR THE  
CASTLE 0780 2-17H20R BEARS  
S56°30'29"E 616.81' FROM THE  
NORTHWEST COR. SEC. 17 W.C.

LINE TABLE		
LINE	DIRECTION	LENGTH
L1	S05°45'50"E	118.75'
L2	S11°43'36"W	674.07'

PDOP =1.4

NAD 83 (SURFACE LOCATION)	
LATITUDE = 40°35'01.81" (40.583835°)	
LONGITUDE = 106°24'18.28" (106.405077°)	
NAD 27 (SURFACE LOCATION)	
LATITUDE = 40°35'01.88" (40.583856°)	
LONGITUDE = 106°24'16.17" (106.404491°)	
STATE PLANE NAD 83 (CO. NORTH)	
N: 1456815.41' E: 2748614.51'	
STATE PLANE NAD 27 (CO. NORTH)	
N: 456813.30' E: 1748770.77'	
NAD 83 (TOP OF NIOBRARA)	
LATITUDE = 40°35'00.64" (40.583511)	
LONGITUDE = 106°24'18.12" (106.405034)	
NAD 27 (TOP OF NIOBRARA)	
LATITUDE = 40°35'00.72" (40.583532)	
LONGITUDE = 106°24'16.01" (106.404448)	
STATE PLANE NAD 83 (CO. NORTH)	
N: 1456697.19 E: 2748625.23	
STATE PLANE NAD 27 (CO. NORTH)	
N: 456695.08 E: 1748781.49	
NAD 83 (LANDING POINT)	
LATITUDE = 40°34'54.12" (40.581700)	
LONGITUDE = 106°24'19.90" (106.405527)	
NAD 27 (LANDING POINT)	
LATITUDE = 40°34'54.20" (40.581721)	
LONGITUDE = 106°24'17.79" (106.404941)	
STATE PLANE NAD 83 (CO. NORTH)	
N: 1456038.89 E: 2748481.58	
STATE PLANE NAD 27 (CO. NORTH)	
N: 456036.78 E: 1748637.85	
NAD 83 (TARGET BOTTOM HOLE)	
LATITUDE = 40°33'22.96" (40.556378°)	
LONGITUDE = 106°24'22.33" (106.406203°)	
NAD 27 (TARGET BOTTOM HOLE)	
LATITUDE = 40°33'23.03" (40.556398°)	
LONGITUDE = 106°24'20.22" (106.405617°)	
STATE PLANE NAD 83 (CO. NORTH)	
N: 1446816.01' E: 2748199.53'	
STATE PLANE NAD 27 (CO. NORTH)	
N: 446813.86' E: 1748355.88'	

LEGEND:

- = SURFACE LOCATION.
- ◆ = LANDING POINT.
- ▣ = TOP OF NIOBRARA.
- = TARGET BOTTOM HOLE.
- ▲ = SECTION CORNERS LOCATED. (NAD 83)
- △ = SECTION CORNERS RE-ESTABLISHED. (Not Set on Ground.)



BASIS OF ELEVATION

SPOT ELEVATION AT THE SOUTHEAST CORNER OF SECTION 29, T7N, R80W, 6th P.M., TAKEN FROM THE COALMONT QUADRANGLE, COLORADO, JACKSON COUNTY, 7.5 MINUTE QUAD (TOPOGRAPHIC MAP) PUBLISHED BY THE UNITED STATES DEPARTMENT OF THE INTERIOR, GEOLOGICAL SURVEY. SAID ELEVATION IS MARKED AS BEING 8156 FEET.



UELS, LLC  
Corporate Office \* 85 South 200 East  
Vernal, UT 84078 \* (435) 789-1017



CERTIFICATION

THIS IS TO CERTIFY THAT THE ABOVE PLAT WAS PREPARED FROM FIELD NOTES OF ACTUAL SURVEYS MADE BY ME OR UNDER MY SUPERVISION, AND THAT THE SAME ARE TRUE AND CORRECT TO THE BEST OF MY KNOWLEDGE AND BELIEF.

REGISTERED LAND SURVEYOR  
REGISTRATION NO. 28285  
STATE OF COLORADO



REV: 2 03-10-22 T.L.L. (WELL NAME CHANGE)

D90 ENERGY, LLC

CASTLE 0780 2-17H20R  
NW 1/4 NW 1/4, SECTION 17, T7N, R80W, 6th P.M.  
JACKSON COUNTY, COLORADO

SURVEYED BY	GREG WEIMER	08-08-16	SCALE
DRAWN BY	M.D.	08-18-16	1" = 1000'

WELL LOCATION PLAT