

Sonic Cement Bond Log

API No.

05-125-06233-00

Company DUKE GAS COMPANY LLC

Well HAYS-CANTRAL #1-12

Field BEECHER ISLAND

County YUMA State COLORADO

Location

Sec: 12 Twp: 2S Rge: 44W

Other Services

Elevation

Permanent Datum GROUND LEVEL Elevation N/A
Log Measured From KELLY BUSHING 5' Ft. Above Perm. Datum
Drilling Measured From KELLY BUSHINGK.B. N/A
D.F. N/A
G.L. N/A

Run Number ONE

Date Survey 01/26/2022

Date Cementing N/A

Type Cementing Operation PRIMARY

Depth Driller 1825'

Depth Logger 1625'

Logged Interval 1623' to 0'

Casing Driller 4.5" @ TD

Float Collar -- D.V. Tool 1111'

Squeeze Depth 1111'

Amount & Type Cement 1111'

Amount & Type Admix 1111'

Type Fluid In Hole WATER

Fluid Level FULL

Salinity PPM CL 1111'

Weight lb/gal -- Vis. 1111'

Approx. Logged Cement Top 892'

Calculated Cement Top 1111'

Max. Hole Temperature 92 DEG F

Tool No. CBL-1

Spacing Recorded 3-5'

Equipment -- Location 900 Hays

Recorded By D.WALKER


Witnessed By ANDY BAUCKE

<<< Fold Here >>>

All interpretations are opinions based on inferences from electrical or other measurements and we cannot and do not guarantee the accuracy or correctness of any interpretation, and we shall not, except in the case of gross or willful negligence on our part, be liable or responsible for any loss, costs, damages, or expenses incurred or sustained by anyone resulting from any interpretation made by any of our officers, agents or employees. These interpretations are also subject to our general terms and conditions set out in our current Price Schedule.

Comments

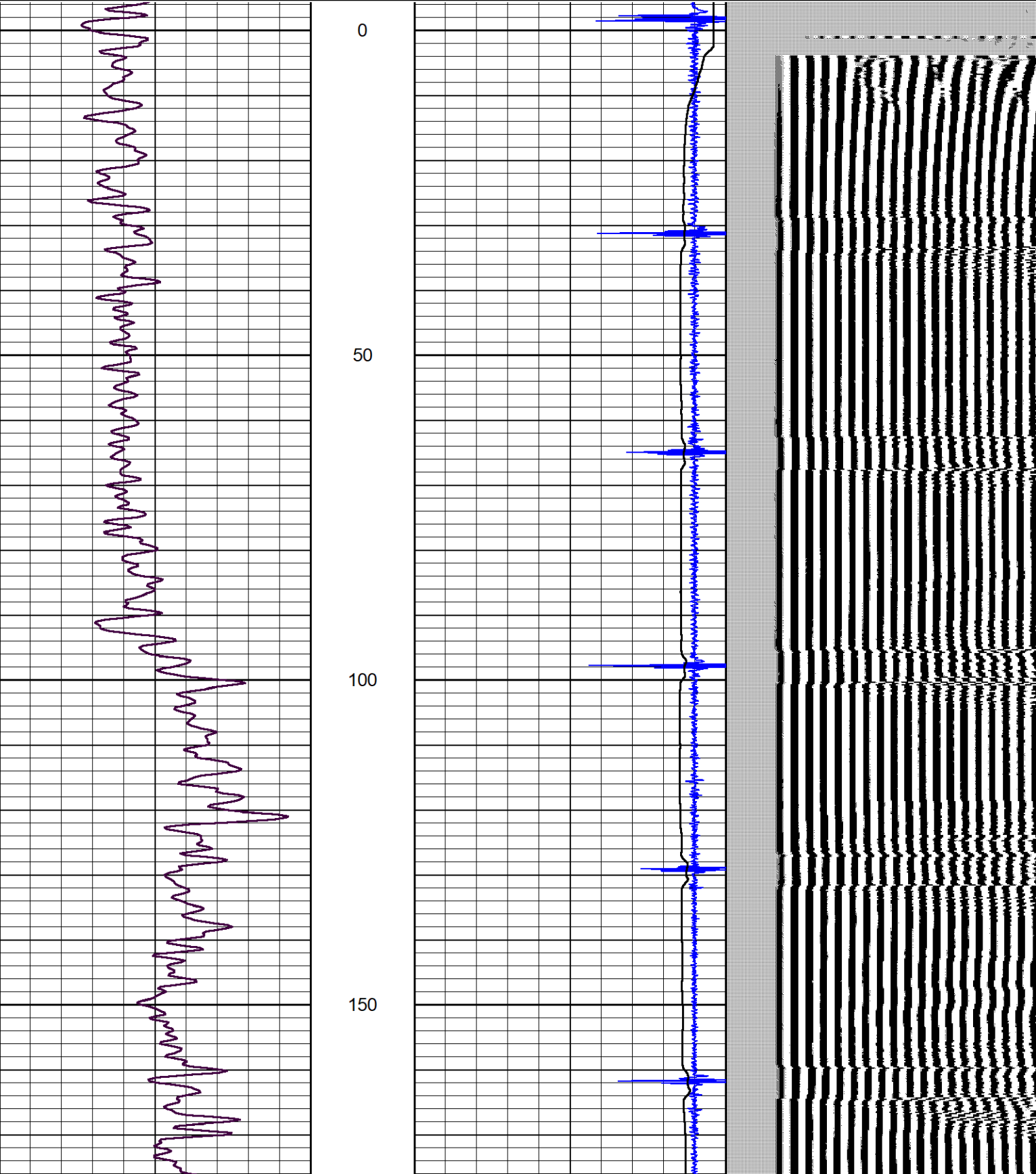
Thank you for using Log-Tech

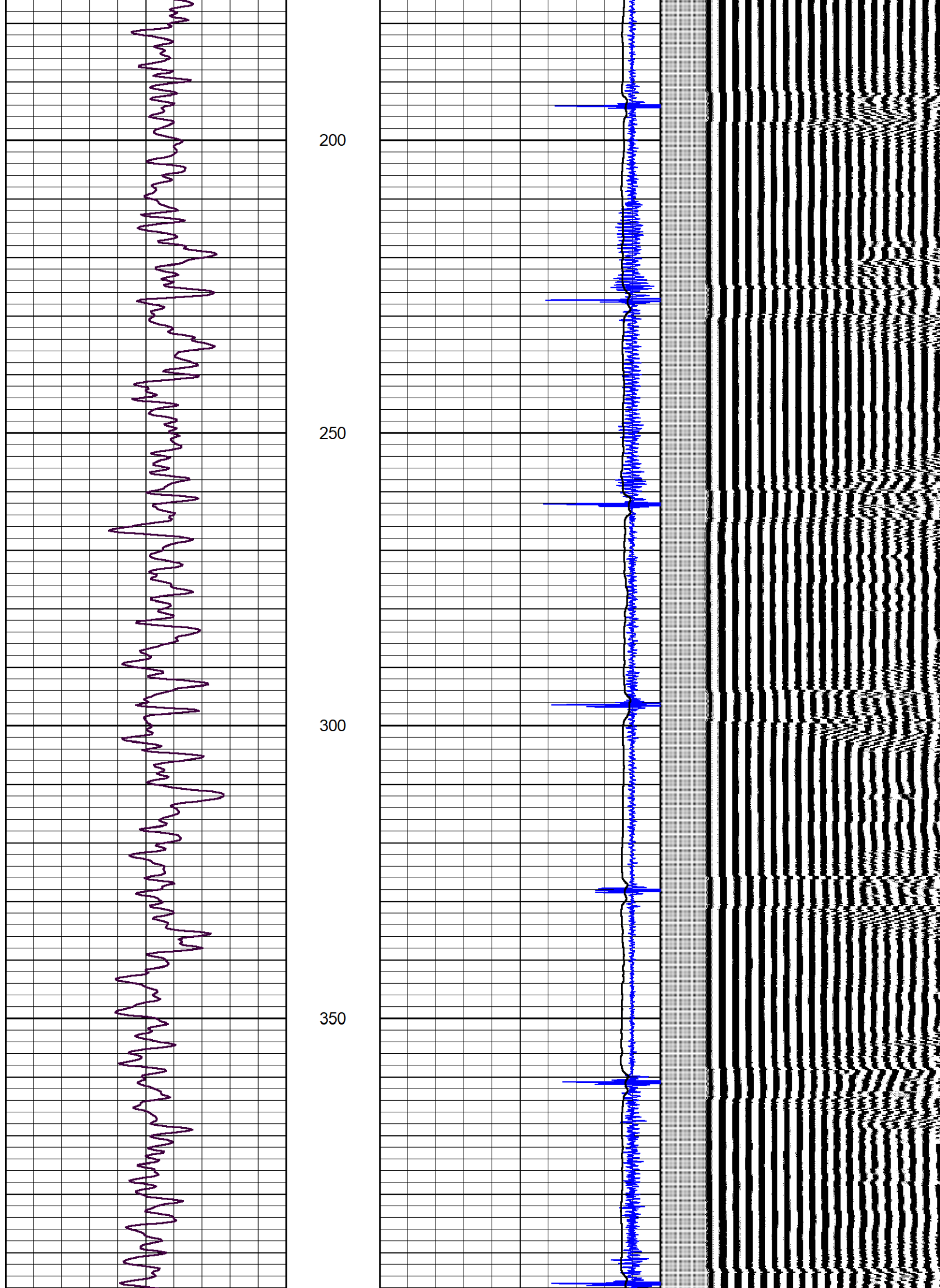
Sensor	Offset (ft)	Schematic	Description	Length (ft)	O.D. (in)	Weight (lb)
			CENT-BC275-0000	2.83	2.75	24.00

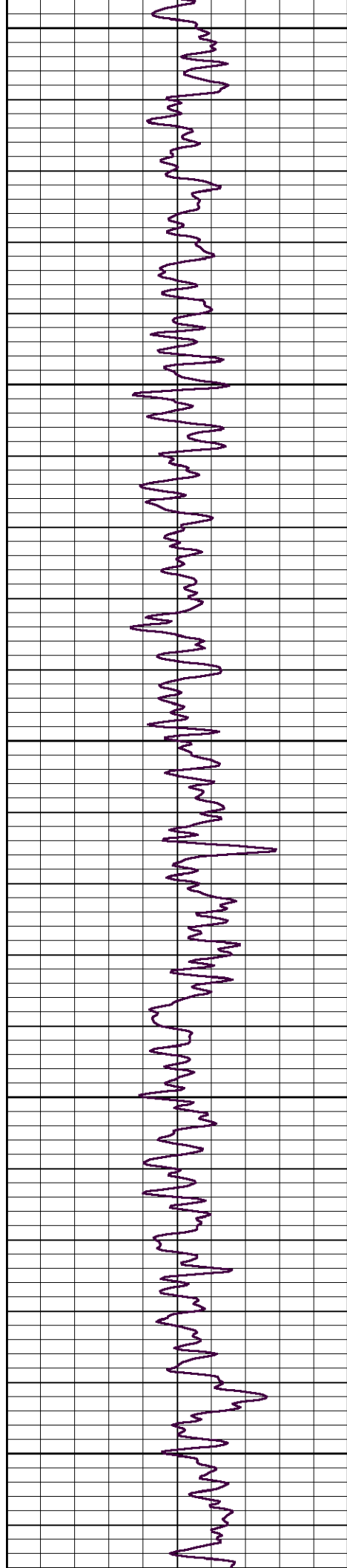
			Probe 2.75" Bowspring Centralizer			
WVF3FT	11.65		CBL-Probe CB275D (CB275D_Base) 2.75" Dual Receiver Bond	8.75	2.75	90.00
WVF5FT	10.65					
HEADVOLT	7.40					
			CENT-BC275-0000 Probe 2.75" Bowspring Centralizer	2.83	2.75	24.00
CCL	3.63					
GR	2.38		GR-GR275B (GR275analog_TopDetector_base) 275 Gamma-CCL (Pulse)	4.57	2.75	55.00
<div> <div> Dataset: Total length: Total weight: O.D.: </div> <div> duke_gas_company_hays-cantrell_1-12_grcbl.db: field/well/run1/pass4 18.98 ft 193.00 lb 2.75 in </div> </div>						

Database File duke_gas_company_hays-cantrall_1-12_grcbl.db
Dataset Pathname pass4
Presentation Format log-tech
Dataset Creation Wed Jan 26 13:03:40 2022
Charted by Depth in Feet scaled 1:240

0	Gamma Ray (GAPI)	150	amp3ft	1.3	CCL	-0.15	200	Variable Density (usec)	1200
0	LTEN (lb)	2000	(mV)	Amplitude					
			-100 10	Amplified Amplitude (mV)					







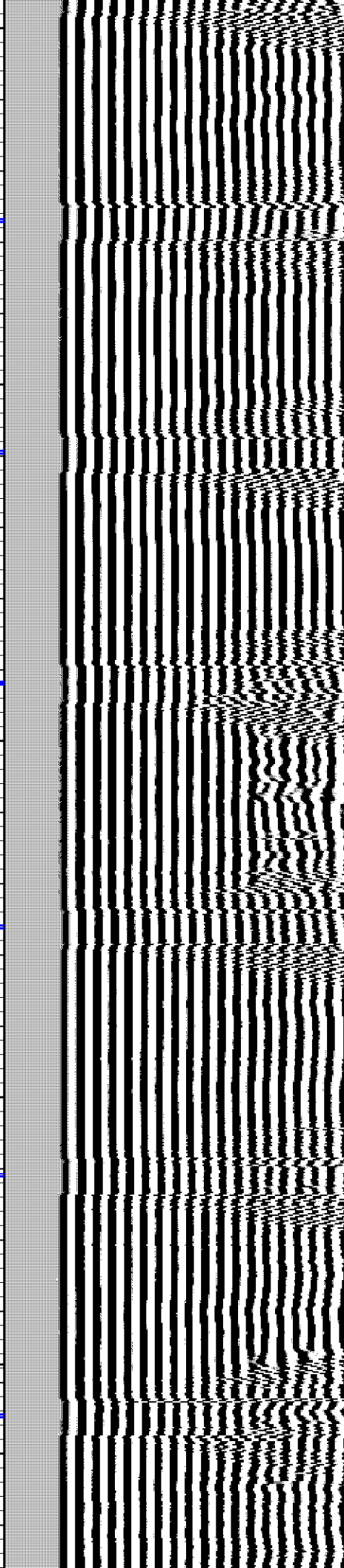
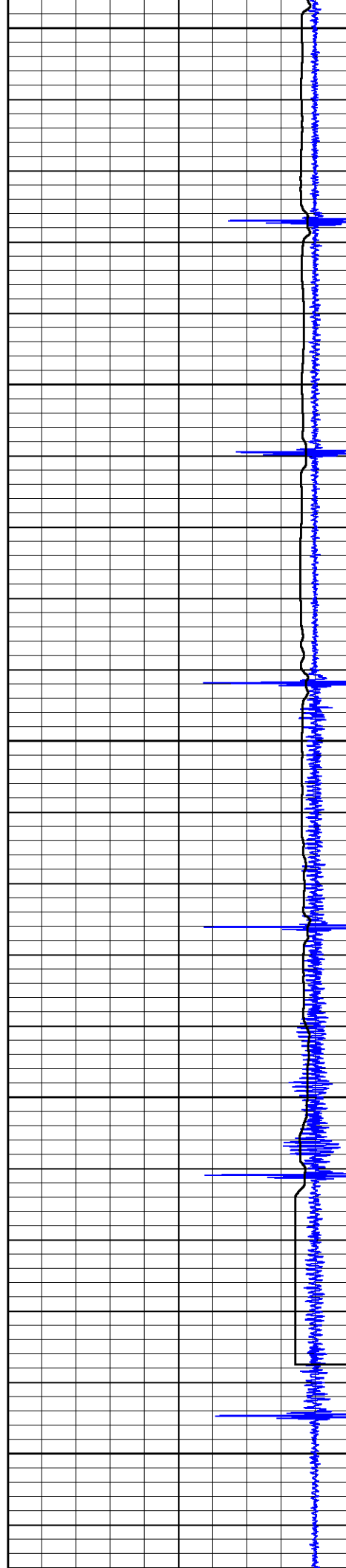
400

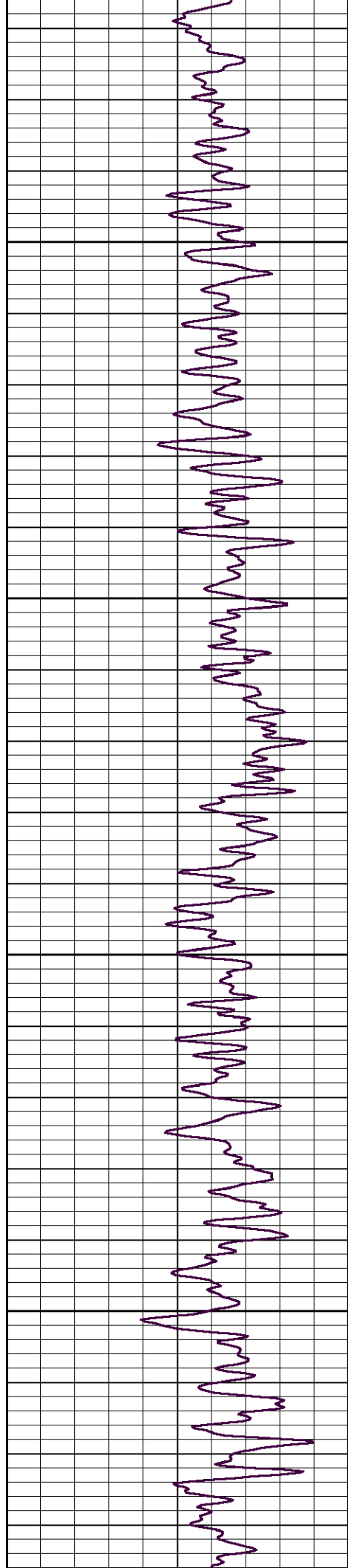
450

500

550

600



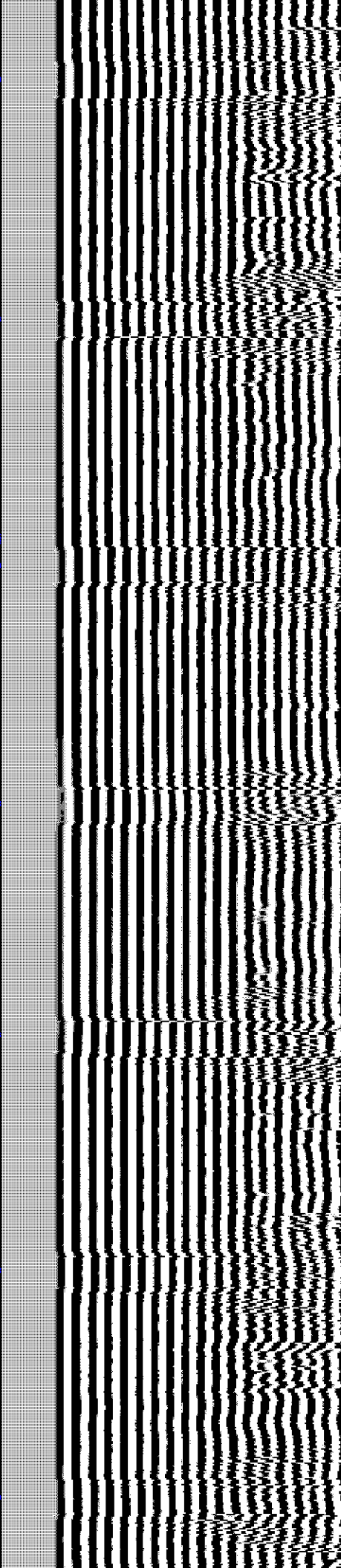
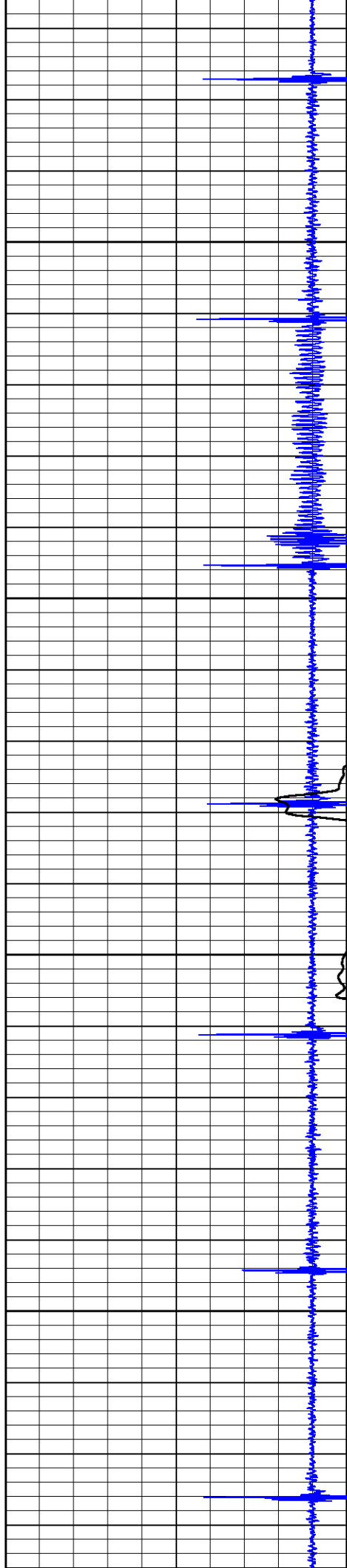


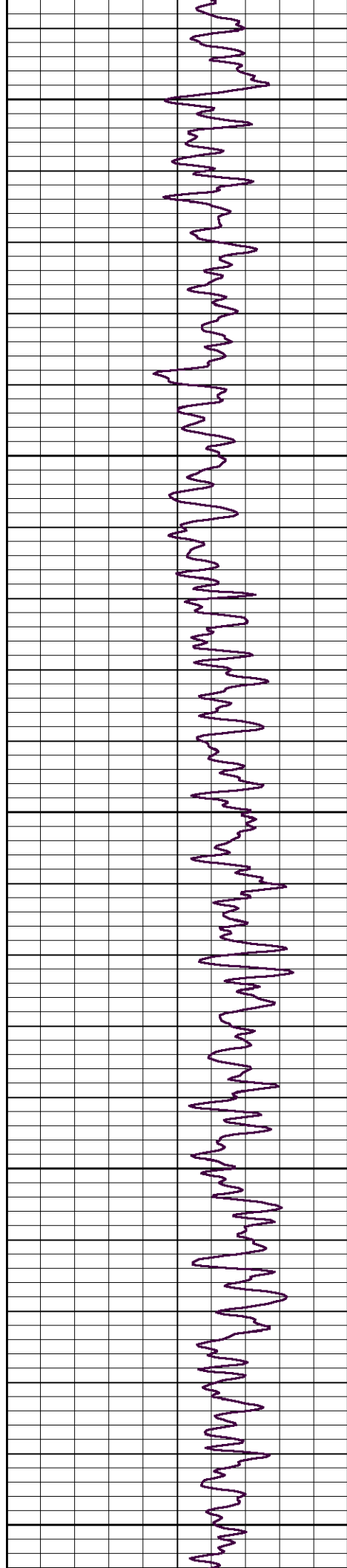
650

700

750

800





850

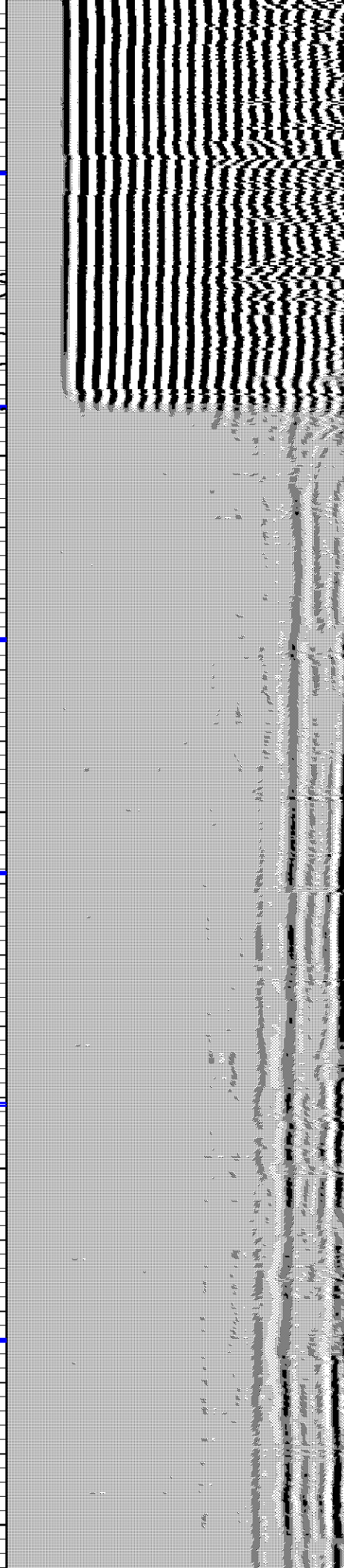
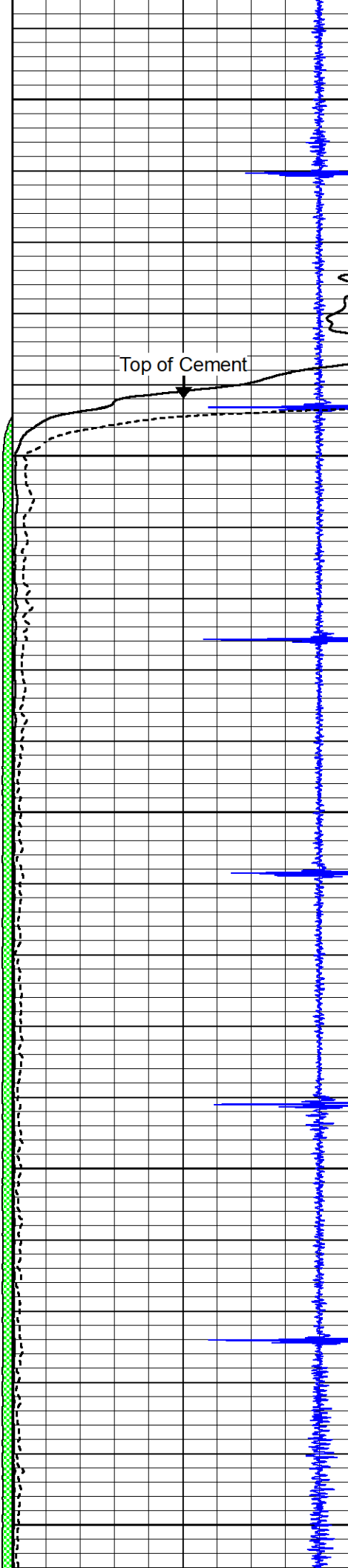
900

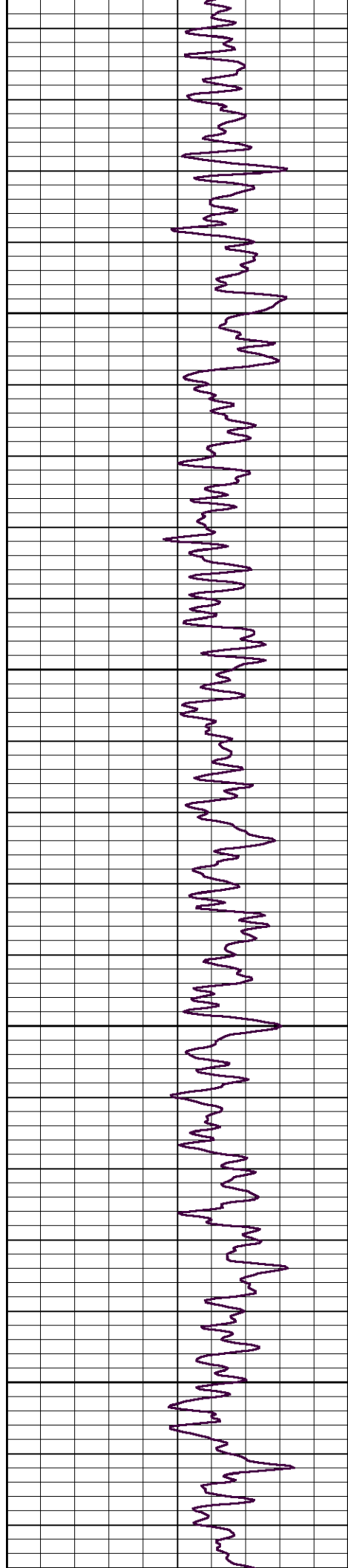
950

1000

1050

Top of Cement



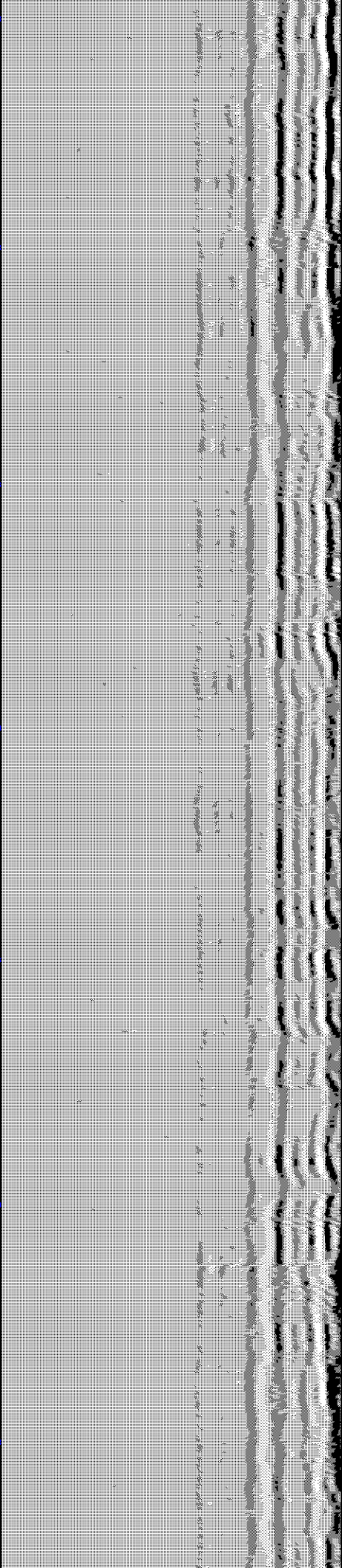
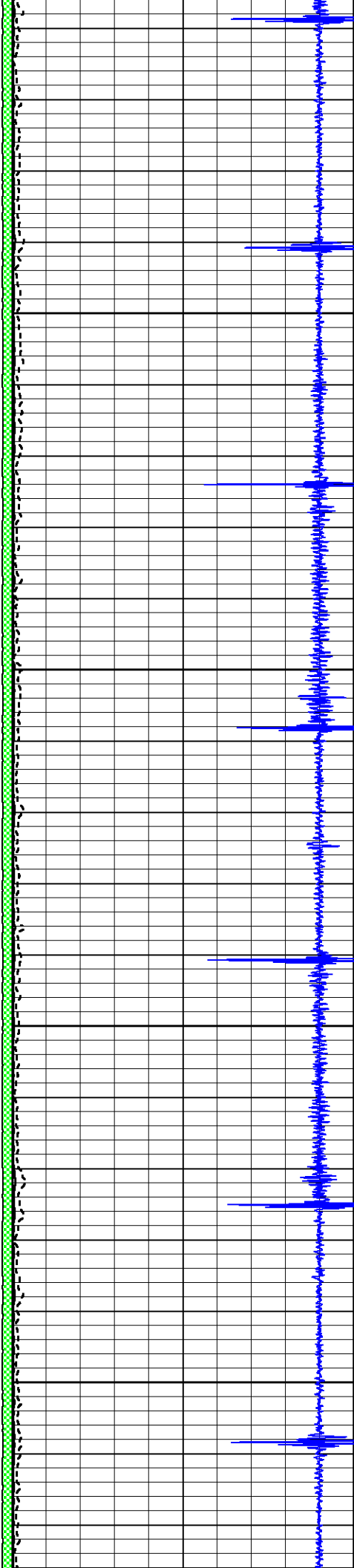


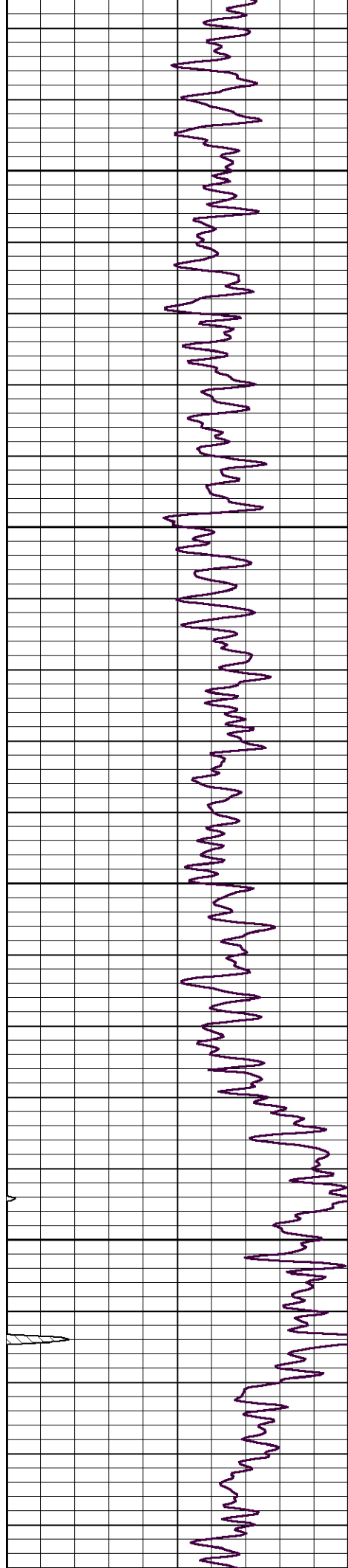
1100

1150

1200

1250





1300

1350

1400

1450

