

K.P. Kauffman Company, Inc.
UPRR 23 Pan Am M
Location ID 319980
SWSE Section 19 T1SR64W
Adams County, Colorado

GAS CAPTURE PLAN

K.P. Kauffman, (KPK), has drafted this plan to comply with Rules 903.d and 903.e.(1).B.

This existing location was constructed in 1979. It consists of the consolidated production facilities for two KPK-operated wells: the UPRR 23 Pan AM M #1, UPRR 23 Pan AM M #2. The location contains the State wellhead, a heater-treater and storage tanks.

Well	API #	Equipment at Wellhead
UPRR 23 Pan AM M #1	05-001-07492	Gas Engine and Pumping Unit
UPRR 23 Pan AM M #2	05-001-07499	No equipment onsite

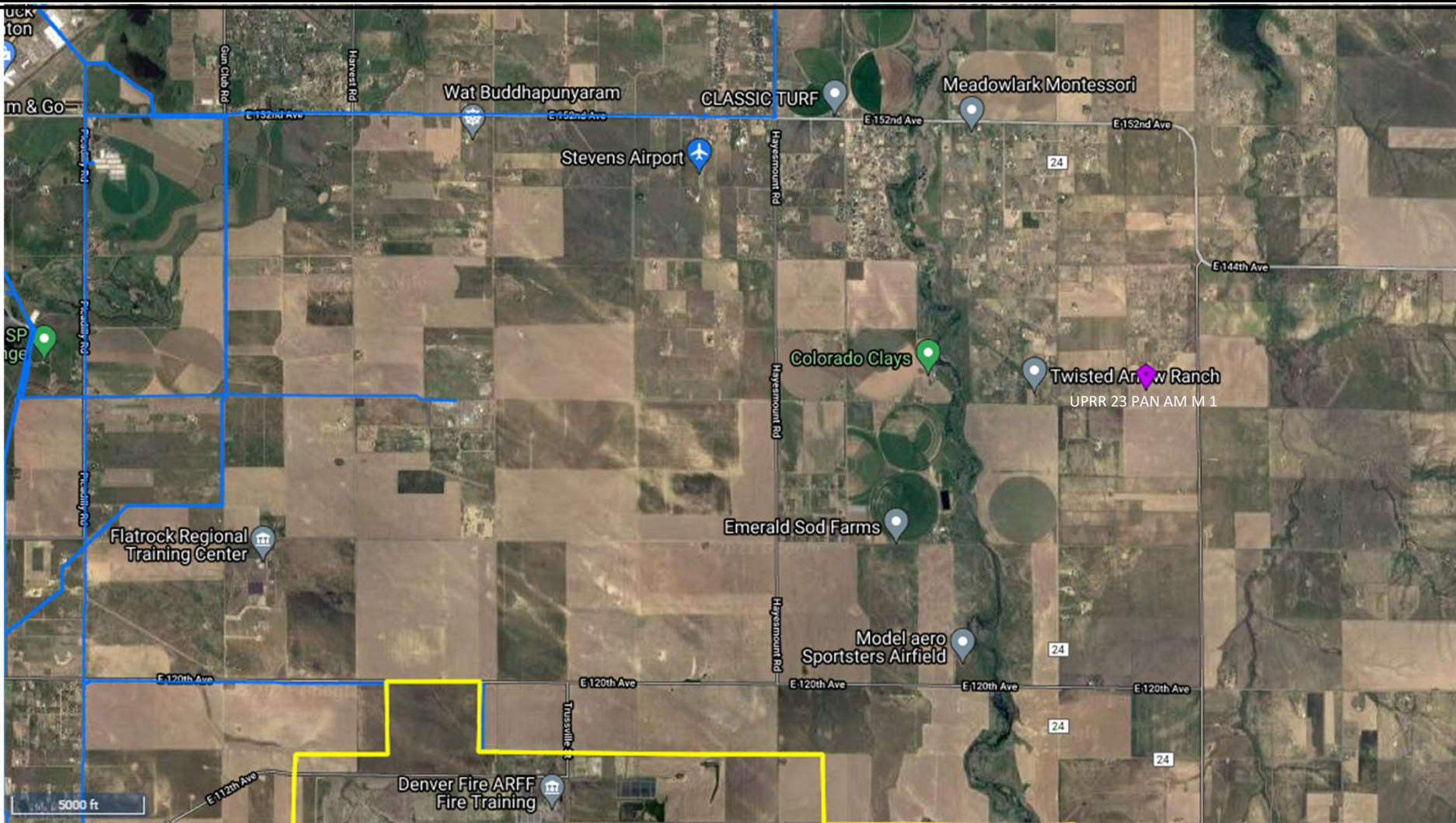
This location has no APEN with CDPHE.

This location is connected to a gas sales line, however the line is currently out of service.

This is not a request for Venting or Flaring.

903.d: Emissions During Production	Natural gas production is minimal. KPK is utilizing the natural gas to run production equipment onsite.
903.e.(1).B.i: Description of the Closest Gas Gathering System	There is an active gas gathering line approximately 3.2 miles away to the northwest.
903. e.(1).B.ii: Company operating the closest Gas Gathering System	Public Service Co of Colorado

903. e.(1).B.iii: Operator's Plan to Connect	KPK currently has no plans to connect this well to the available gathering system. The well does not produce enough gas that would offset the impacts of constructing such a long lateral to tie in to the system.
903. e.(1).B.iv: Production Test Plans	This unit has been producing since 1979.
903. e.(1).B.v: Safety Risks	KPK does not currently anticipate any safety concerns that would result in gas being allowed to escape to the atmosphere. Natural gas is piped on location in a manner to be utilized for running production equipment.
903. e.(1).B.vi: Operational BMPs	During all maintenance activities, KPK will have appropriate control equipment onsite to minimize any venting during active and planned maintenance activities.
903. e.(1).B.vii: Procedures to reduce well liquids unloading events	KPK does not currently anticipate any Well Liquids Unloading Events being required.
903. e.(1).B.viii: Anticipated volumes of liquids and gas production	UPRR 23 Pan AM M #1 averages 3 bbl of oil per month, 194 mcf of natural gas per month, and 7 bbls of produced water per month. UPRR 23 Pan AM M #2 averages 2 bbl of oil per month, 194 mcf of natural gas per month, and 8 bbls of produced water per month.



K.P. Kauffman Company, Inc.
 Nearest Gas Gathering Line Map
 UPRR 23 PAN AM M #1
 API # 05-001-07492
 SWSE Section 19 T1S R64W

Legend



Gas Pipeline

Well

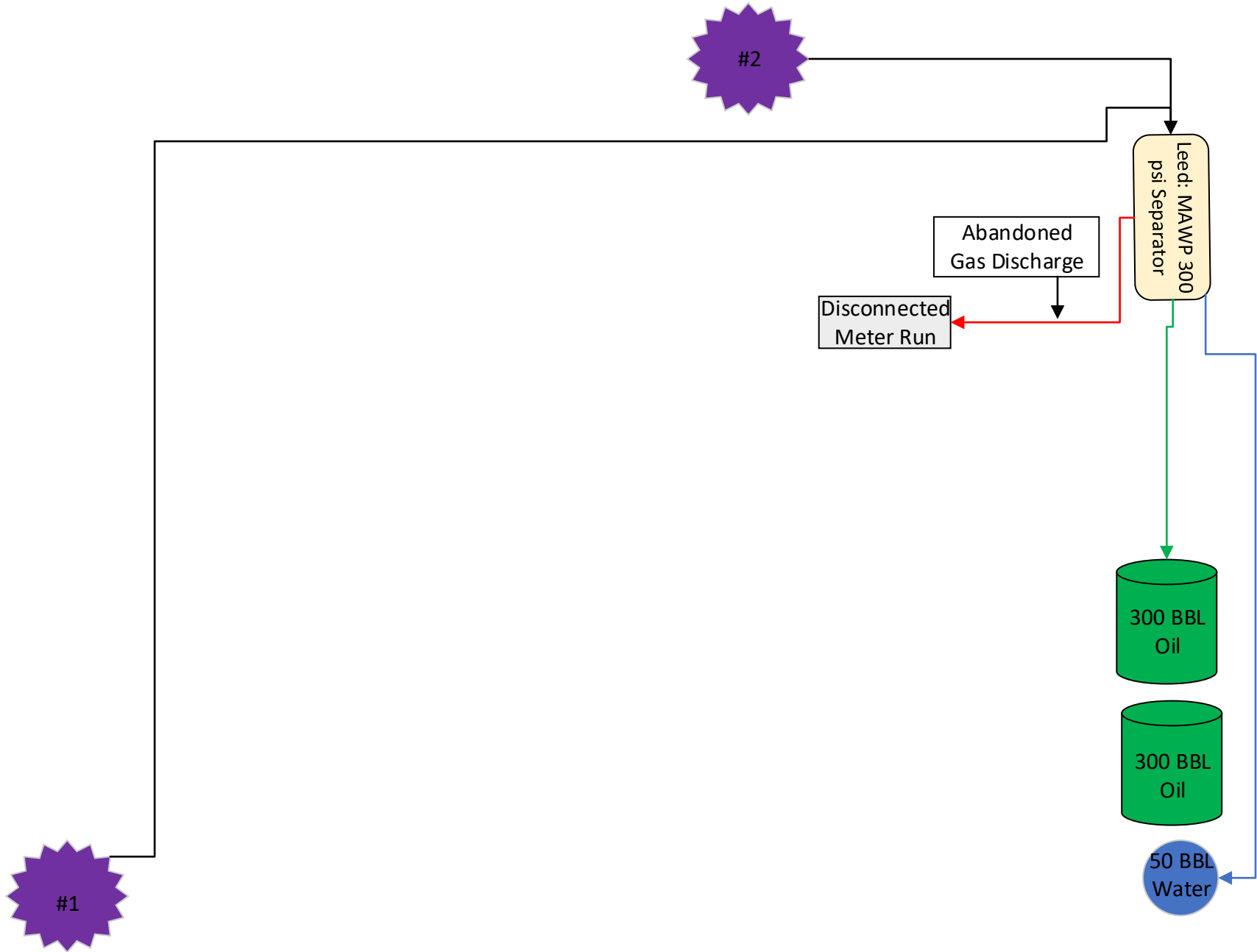


0 Ft 1000 Ft 2000 Ft



Prepared By:
 Ardor Environmental LLC

January 10, 2021



**UPRR 23 Pan Am M #1 & #2
Process Flow Diagram**