

K.P. Kauffman Company, Inc.
Horth, R #1, #2
Location ID 319985
SWNE Section 30 T1S R64W
Adams County, Colorado

GAS CAPTURE PLAN

K.P. Kauffman, (KPK), has drafted this plan to comply with Rules 903.d and 903.e.(1).B.

This existing location was constructed in 1980. It consists of the consolidated production facilities for two KPK-operated wells: the Horth, R #1 and Horth, R #2. The location contains the Horth, R wellhead, a heater-treater and storage tanks.

Well	API #	Equipment at Wellhead
Horth, R #1	05-001-07530	Gas Engine and Pumping Unit
Horth, R #2	05-001-07531	No equipment onsite

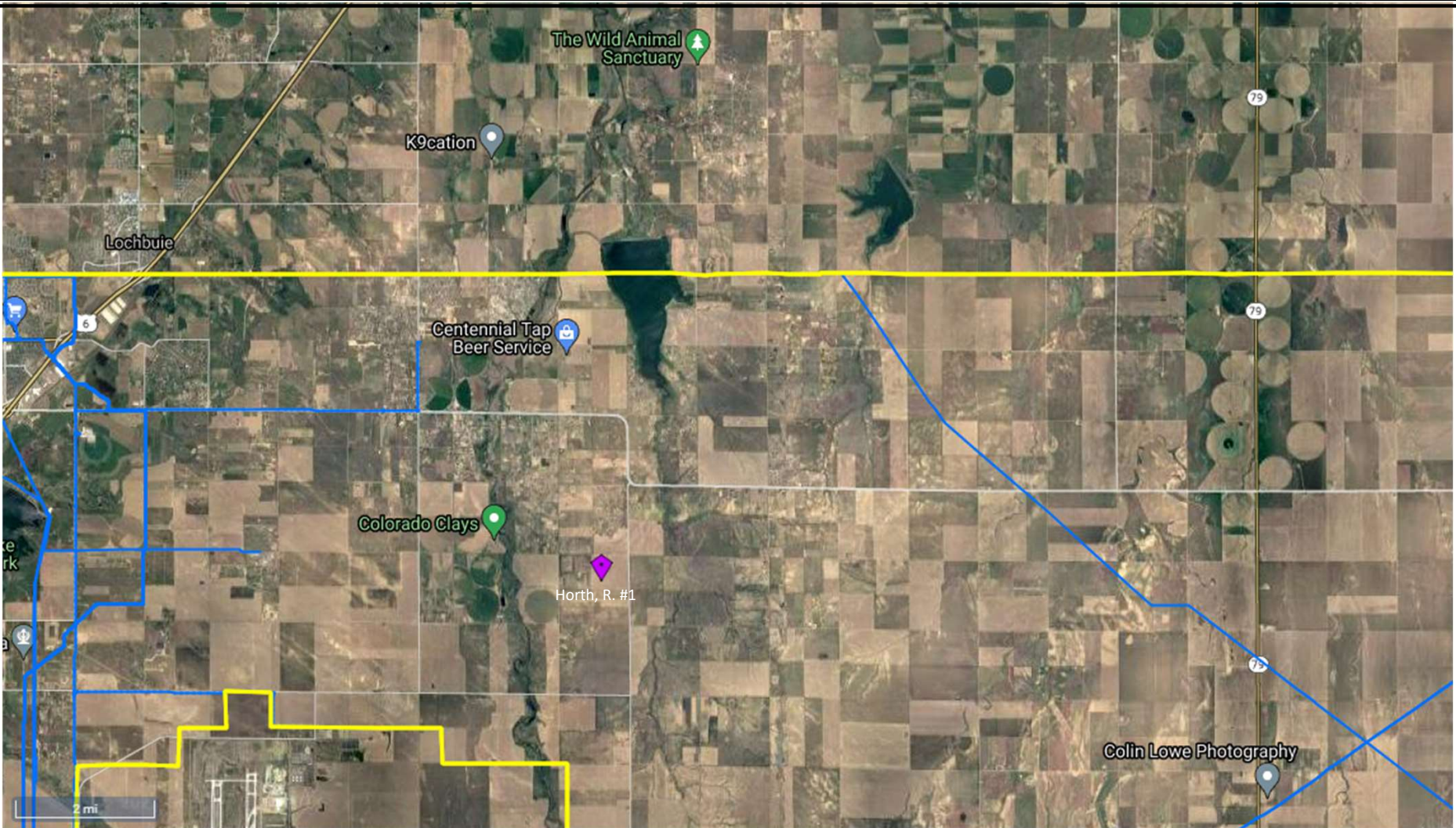
This location has an APEN with CDPHE 001-1847

This location is connected to a gas sales line, however the line is currently out of service.

This is not a request for Venting or Flaring.

903.d: Emissions During Production	Natural gas production is minimal. KPK is utilizing the natural gas to run production equipment onsite.
903.e.(1).B.i: Description of the Closest Gas Gathering System	There is an active gas gathering line approximately 3.57 miles away to the north.
903. e.(1).B.ii: Company operating the closest Gas Gathering System	Public Service Co of Colorado

<p>903. e.(1).B.iii: Operator's Plan to Connect</p>	<p>KPK currently has no plans to connect this well to the available gathering system. The well does not produce enough gas that would offset the impacts of constructing such a long lateral to tie in to the system.</p>
<p>903. e.(1).B.iv: Production Test Plans</p>	<p>This well has been producing since 1980.</p>
<p>903. e.(1).B.v: Safety Risks</p>	<p>KPK does not currently anticipate any safety concerns that would result in gas being allowed to escape to the atmosphere. Natural gas is piped on location in a manner to be utilized for running production equipment.</p>
<p>903. e.(1).B.vi: Operational BMPs</p>	<p>During all maintenance activities, KPK will have appropriate control equipment onsite to minimize any venting during active and planned maintenance activities.</p>
<p>903. e.(1).B.vii: Procedures to reduce well liquids unloading events</p>	<p>KPK does not currently anticipate any Well Liquids Unloading Events being required.</p>
<p>903. e.(1).B.viii: Anticipated volumes of liquids and gas production</p>	<p>Horth, R #1 averages 2 bbl of oil per month, 4 mcf of natural gas per month, and 50 bbls of produced water per month.</p> <p>Horth, R #2 averages 1 bbl of oil per month, 4 mcf of natural gas per month, and 50 bbls of produced water per month.</p>

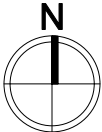


K.P. Kauffman Company, Inc.
 Nearest Gas Gathering Line Map
 Horth, R. #1
 API # 05-001-07530
 SWNE Section 30 T1S R64W

Legend

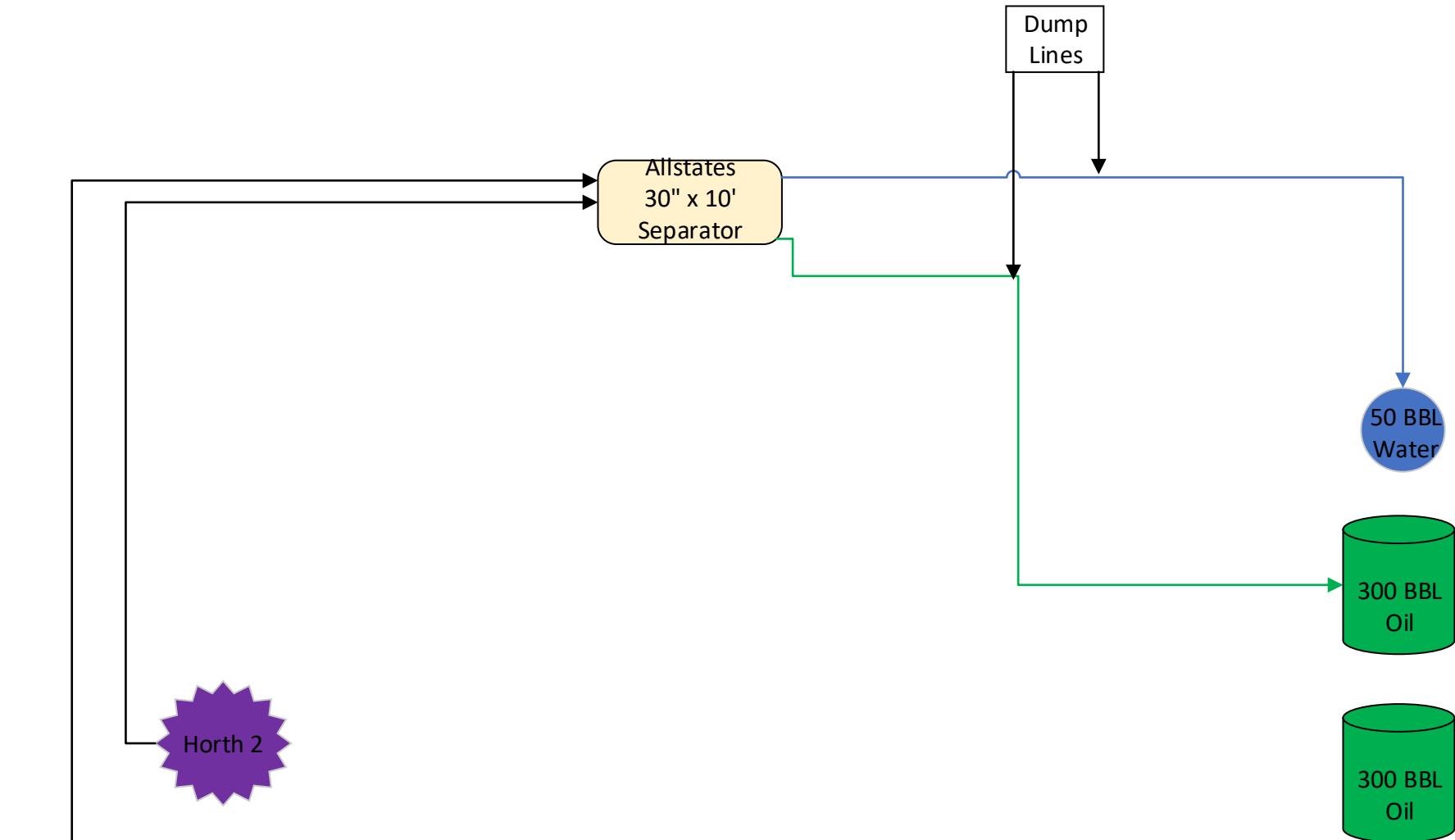


Gas Pipeline
 Well



Prepared By:
 Ardor Environmental LLC

January 10, 2021



**Horth Battery Process Flow
Diagram
NENE Section 30 - 1S - 64W
Adams Co., CO**