

K.P. Kauffman Company, Inc.
 Hein #1, Hein #2
 Location ID 318423
 SWSW Section 36 T2N R67W
 Weld County, Colorado

GAS CAPTURE PLAN

K.P. Kauffman, (KPK), has drafted this plan to comply with Rules 903.d and 903.e.(1).B.

This existing location was constructed in 1976. It consists of the consolidated production facilities for two KPK-operated wells: the Hein #1 and Hein #2. The location contains the RRR&S 6-1 wellhead, a heater-treater and storage tanks.

Well	API #	Equipment at Wellhead
Hein #1	05-123-09056	Gas Engine and Pumping Unit
Hein #2	05-123-09081	Gas Engine and Pumping Unit

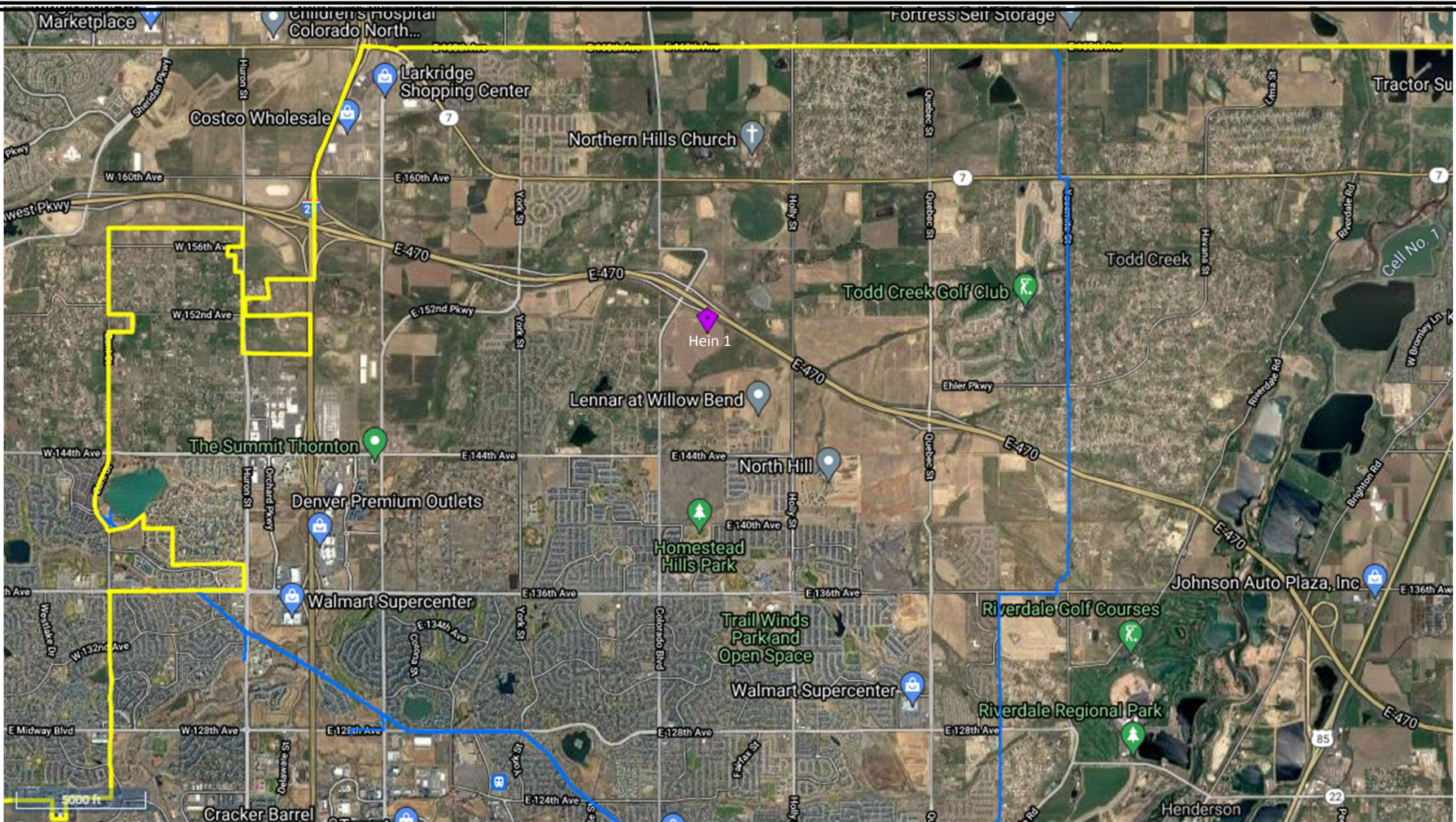
This location has an APEN with CDPHE 15-123-09056.

This location is connected to a gas sales line, however the line is currently out of service.

This is not a request for Venting or Flaring.

903.d: Emissions During Production	Natural gas production is minimal. KPK is utilizing the natural gas to run production equipment onsite.
903.e.(1).B.i: Description of the Closest Gas Gathering System	There is an active gas gathering line approximately .67 miles away to the north.
903. e.(1).B.ii: Company operating the closest Gas Gathering System	Colorado Interstate Gas

903. e.(1).B.iii: Operator's Plan to Connect	KPK currently has no plans to connect this well to the available gathering system. The well does not produce enough gas that would offset the impacts of constructing such a long lateral to tie in to the system.
903. e.(1).B.iv: Production Test Plans	This well has been producing since 1976.
903. e.(1).B.v: Safety Risks	KPK does not currently anticipate any safety concerns that would result in gas being allowed to escape to the atmosphere. Natural gas is piped on location in a manner to be utilized for running production equipment.
903. e.(1).B.vi: Operational BMPs	During all maintenance activities, KPK will have appropriate control equipment onsite to minimize any venting during active and planned maintenance activities.
903. e.(1).B.vii: Procedures to reduce well liquids unloading events	KPK does not currently anticipate any Well Liquids Unloading Events being required.
903. e.(1).B.viii: Anticipated volumes of liquids and gas production	Hein #1 averages 2 bbl of oil per month, 4 mcf of natural gas per month, and 50 bbls of produced water per month. Hein #2 averages 1 bbl of oil per month, 4 mcf of natural gas per month, and 50 bbls of produced water per month.

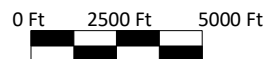


K.P. Kauffman Company, Inc.
 Nearest Gas Gathering Line Map
 Hein #1; Hein #2
 PI # 05-123-09056
 SWSW Section 36 T2N R67W

Legend



Gas Pipeline
 Well



Prepared By:
 Ardor Environmental LLC

January 10, 2021